



Reproductive aging-associated common genetic variants and the risk of breast cancer

Citation

He, Chunyan, Daniel I Chasman, Jill Dreyfus, Shih-Jen Hwang, Rikje Ruiters, Serena Sanna, Julie E Buring, Lindsay FernándezRhodes, Nora Franceschini, Susan E Hankinson, Albert Hofman, Kathryn L Lunetta, Giuseppe Palmieri, Eleonora Porcu, Fernando Rivadeneira, Lynda M Rose, Greta L Splansky, Lisette Stolk, André G Uitterlinden, Stephen J Chanock, Laura Crisponi, Ellen W Demerath, Joanne M Murabito, Paul M Ridker, Bruno H Stricker, and David J Hunter. 2011. Reproductive aging-associated common genetic variants and the risk of breast cancer. *Breast Cancer Research* 14(2): R54.

Published Version

doi:10.1186/bcr3155

Permanent link

<http://nrs.harvard.edu/urn-3:HUL.InstRepos:10448741>

Terms of Use

This article was downloaded from Harvard University's DASH repository, and is made available under the terms and conditions applicable to Other Posted Material, as set forth at <http://nrs.harvard.edu/urn-3:HUL.InstRepos:dash.current.terms-of-use#LAA>

Share Your Story

The Harvard community has made this article openly available.
Please share how this access benefits you. [Submit a story](#).

[Accessibility](#)

RESEARCH ARTICLE

Open Access

Reproductive aging-associated common genetic variants and the risk of breast cancer

Chunyan He^{1,2*}, Daniel I Chasman³, Jill Dreyfus⁴, Shih-Jen Hwang⁵, Rikje Ruiter⁶, Serena Sanna⁷, Julie E Buring³, Lindsay Fernández-Rhodes⁸, Nora Franceschini⁸, Susan E Hankinson^{9,10}, Albert Hofman⁶, Kathryn L Lunetta^{5,11}, Giuseppe Palmieri¹², Eleonora Porcu⁷, Fernando Rivadeneira^{6,13,14}, Lynda M Rose³, Greta L Splansky⁵, Lisette Stolk^{13,14}, André G Uitterlinden^{6,13,14}, Stephen J Chanock¹⁵, Laura Crisponi⁷, Ellen W Demerath⁴, Joanne M Murabito^{5,16}, Paul M Ridker³, Bruno H Stricker^{6,13} and David J Hunter^{9,10,17}

Abstract

Introduction: A younger age at menarche and an older age at menopause are well established risk factors for breast cancer. Recent genome-wide association studies have identified several novel genetic loci associated with these two traits. However, the association between these loci and breast cancer risk is unknown.

Methods: In this study, we investigated 19 and 17 newly identified single nucleotide polymorphisms (SNPs) from the ReproGen Consortium that have been associated with age at menarche and age at natural menopause, respectively, and assessed their associations with breast cancer risk in 6 population-based studies among up to 3,683 breast cancer cases and 34,174 controls in white women of European ancestry. In addition, we used these SNPs to calculate genetic risk scores (GRSs) based on their associations with each trait.

Results: After adjusting for age and potential population stratification, two age at menarche associated SNPs (rs1079866 and rs7821178) and one age at natural menopause associated SNP (rs2517388) were associated with breast cancer risk (p values, 0.003, 0.009 and 0.023, respectively). The odds ratios for breast cancer corresponding to per-risk-allele were 1.14 (95% CI, 1.05 to 1.24), 1.08 (95% CI, 1.02 to 1.15) and 1.10 (95% CI, 1.01 to 1.20), respectively, and were in the direction predicted by their associations with age at menarche or age at natural menopause. These associations did not appear to be attenuated by further controlling for self-reported age at menarche, age at natural menopause, or known breast cancer susceptibility loci. Although we did not observe a statistically significant association between any GRS for reproductive aging and breast cancer risk, the 4th and 5th highest quintiles of the younger age at menarche GRS had odds ratios of 1.14 (95% CI, 1.01 to 1.28) and 1.13 (95% CI, 1.00 to 1.27), respectively, compared to the lowest quintile.

Conclusions: Our study suggests that three genetic variants, independent of their associations with age at menarche or age at natural menopause, were associated with breast cancer risk and may contribute modestly to breast cancer risk prediction; however, the combination of the 19 age at menarche or the 17 age at natural menopause associated SNPs did not appear to be useful for identifying a high risk subgroup for breast cancer.

Introduction

A younger age at menarche and an older age at menopause are well-established risk factors for the development of breast cancer [1]. In the general population, the risk of breast cancer decreases by 10% for each 2-year

delay in menarche [2] but increases by 3% for each year that menopause is delayed [3]. These associations are consistent with the hypothesis that breast cancer risk is related to the extent of steroid hormone exposure during a woman's reproductive years, which drives breast mitotic activity and determines the probability of tumorigenic somatic events [4].

Recently, genome-wide association studies (GWAS) have identified several new common genetic loci

* Correspondence: chunhe@iupui.edu

¹Department of Public Health, Indiana University School of Medicine, 980 West Walnut Street, R3-C241, Indianapolis, IN 46202, USA
Full list of author information is available at the end of the article

associated with either age at menarche or age at natural menopause. Four independent GWAS of age at menarche have identified two novel loci at *LIN28B* and 9q31.2 [5-8], and two GWAS of age at natural menopause have identified four novel loci on chromosomes 5, 6, 19, and 20 [5,9]. Most recently, the ReproGen Consortium, which consisted of these initial GWASs and many additional studies, has conducted expanded meta-analyses for age at menarche [10] and age at natural menopause [11] and reported more new loci identified for each trait. Given the well-established associations of age at menarche and age at natural menopause with breast cancer risk, we set out to assess whether these common genetic loci influence breast cancer risk and whether a genetic risk score (GRS) for these reproductive events might be useful for identifying a high-risk subgroup for breast cancer. Furthermore, since the reproductive risk factors have been observed to be differentially associated with breast cancer by tumor histological subtypes [12-16], we assessed these genetic associations by tumor histological subtypes defined by estrogen receptor (ER) status.

We therefore conducted a meta-analysis of six population-based studies to investigate the association between genetic loci associated with age at menarche or age at natural menopause and breast cancer risk. We assessed 19 and 17 single-nucleotide polymorphisms (SNPs) that have been previously reported to be linked to age at menarche [10] and age at natural menopause [11], respectively, among up to 3,683 breast cancer cases and 34,174 controls in women of European ancestry and evaluated whether these SNPs were differentially associated with breast cancer subtypes defined by ER status in two studies in which such data were available.

Materials and methods

Study population

The ReproGen Consortium was formed by more than 30 studies in the US and Europe to investigate the genetics of reproductive aging traits [10,11]. Our

analysis used data from six population-based studies from the ReproGen Consortium: the Nurses' Health Study (NHS), the Women's Genome Health Study (WGHS), the SardiNIA Breast Cancer Study (SardiNIA), the Rotterdam Study I and II (RSI+II), the Framingham Heart Study (FHS), and the Atherosclerosis Risk in Communities Study (ARIC). Each study had at least 200 breast cancer cases. Four studies were prospective cohort studies, one was a nested case-control study, and one was a case-control study. A description of the six studies is provided in Table 1, and more information is given in Additional file 1. Briefly, breast cancer cases occurring in defined populations during specific periods of time were identified by structured questionnaires, medical records, or linkage with a nationwide registry of cancer or death index or both. By the time we conducted this study, the majority of the women in these studies had passed through menopause. As most of the participants in these studies were European whites, we restricted analyses to women of European ancestry. We excluded subjects with missing information on age. Two studies (NHS and WGHS) provided information on the ER status of the breast tumors for a subset of the cases. This information was extracted from medical records. Each study was approved by the relevant local institutional review boards.

Genotype data

We analyzed genotypes for 19 and 17 independent SNPs with reported associations with age at menarche and age at natural menopause, respectively, in the ReproGen Consortium, in which all SNPs achieved genome-wide significance in the meta-analysis of each trait (combined stage 1 and replication P value of less than 1×10^{-8}) [10,11]. None of these SNPs has been reported to be associated with breast cancer risk in previous GWAS and this is likely because of the very stringent P value threshold used to declare genome-wide significance (usually, P values were less than at least 1×10^{-7}). As positive controls, 10 SNPs with consistently reported

Table 1 List of participating studies and number of case and control subjects

Study acronym	Study name	Study design	Case subjects (n = 3,683)	ER ⁺ /ER ⁻ subjects (n = 1,716/371)	Control subjects (n = 34,174)	All subjects (n = 37,857)
NHS-BC	Nurses' Health Study-Breast Cancer	Nested case-control	1,145 (31.1)	807/181	1,142 (3.3)	2,287 (6.0)
WGHS	Women's Genome Health Study	Prospective cohort	1,099 (29.8)	909/190	22,205 (65.0)	23,304 (61.5)
SardBC	SardiNIA Breast Cancer Study	Case-control	809 (22.0)	-	674 (2.0)	1,483 (3.9)
RSI+II	Rotterdam Study I and II	Prospective cohort	216 (5.9)	-	4,261 (12.5)	4,477 (11.8)
FHS	Framingham Heart Study	Prospective cohort	207 (5.6)	-	3,698 (10.8)	3,905 (10.3)
ARIC	Atherosclerosis Risk in Communities Study	Prospective cohort	207 (5.6)	-	2,194 (6.4)	2,401 (6.3)

Data are presented as the number (percentage) of cases, controls, and all subjects. ER, estrogen receptor.

associations with breast cancer as shown in recent GWAS were included [17-19]. All 46 SNPs are listed in Table S1 of Additional file 2. Genotypes used in this analysis have been previously described [10,11]. Complete genotype data from a total of up to 3,683 cases and 34,174 control subjects were available for analysis after the exclusions described in the 'Study population' section.

Breast cancer risk factors

The six studies from the ReproGen Consortium provided information on one or more of the following risk factors for breast cancer: age (continuous, at study entry or diagnosis), age at menarche (continuous, between 9 and 17 years), age at natural menopause (continuous, between 40 and 60 years), age at first live birth (less than 20, 20 to 24, 25 to 29 or no birth, at least 30 years), family history of breast cancer in first-degree relatives (yes/no), alcohol consumption (less than 5, 5 to 15, 15 to 30, at least 30 g/day), parity (0, 1 to 2, at least 3), menopausal hormone therapy (ever/never), oral contraceptive (OC) use (ever/never), and adult body mass index (BMI) (continuous).

Genetic risk score computation

The GRS was calculated on the basis of the 19 and 17 independent SNPs identified in previous studies as being associated with age at menarche and age at natural menopause, respectively [10,11]. As a younger age at menarche and an older age at menopause are independently associated with an elevated breast cancer risk, we computed separate GRSs for a younger age at menarche and an older age at natural menopause. The risk allele was defined as an allele that was associated with a younger age at menarche or an older age at natural menopause. Two methods were used to determine the GRS: a simple count method (count GRS) and a weighted method (weighted GRS). We assumed an additive genetic model for each SNP, applying a linear weighting of 0, 1, or 2 to genotypes containing 0, 1, or 2 risk alleles, respectively. The count method assumes that each SNP contributes equally to the risk of breast cancer. The count GRS was calculated by simply summing the number of risk alleles of each SNP. For the weighted GRS, each SNP was weighted by β -coefficients obtained from the replication studies of recent meta-analyses of two traits [10,11]. The weighted GRS was calculated by multiplying each β -coefficient by the number of corresponding risk alleles (0, 1, or 2) and then summing the products. To simplify interpretation and facilitate comparison with the count GRS, the weighted GRS was further divided by twice the sum of the β -coefficients and then multiplied by the total number of risk alleles. To provide a positive control and also to control for

potential confounding by known breast cancer-associated genetic variants, a count GRS was computed on the basis of the 10 SNPs with consistently reported associations with breast cancer [19]: rs2981582, rs3803662, rs11249433, rs7716600, rs13387042, rs889312, rs13281615, rs999737, rs3817198, and rs1045485.

Statistical analysis

In each of the six studies, we performed logistic regression to evaluate the association with breast cancer for each of the 46 candidate SNPs, assuming an additive genetic model. Logistic regression was also used to analyze the association between GRS and breast cancer by including both GRSs for age at menarche and age at natural menopause in the model as the main effects. The GRSs were modeled as continuous variables or categorized into quintiles, and the cutoff points for quintiles were based on the WGHS population, which is the largest prospective cohort population among all participating studies. This approach was applied to each of the six participating studies. Odds ratios (ORs) and 95% confidence intervals (CIs) were estimated from logistic regression. To control for potential confounding by population stratification, we adjusted for the top principal components of genetic variation chosen for each study. We adjusted for age in the main model. To examine whether the genetic association of each of the candidate SNPs or GRSs with breast cancer is mediated through the onset of menarche or natural menopause, we then adjusted for self-reported age at menarche and age at natural menopause in the main model. Other conventional risk factors for breast cancer - including age at first live birth, family history of breast cancer in first-degree relatives, alcohol consumption, parity, menopausal hormone therapy, OC use, and adult BMI - were further included in the model to control for potential confounding in studies which had such data available. To examine whether these genetic associations differ by breast cancer subtypes, in each of the two studies that provided information on ER status, we then investigated the genetic association of each of the candidate SNPs or GRSs with breast cancer in subgroup analysis by ER histological status (positive or negative).

Forest plots were used to present study-specific ORs and 95% CIs. We then performed meta-analyses by using the fixed-effects model to estimate summary ORs from study-specific estimates that were weighted by the inverse of the variance of each study. As the meta-analyses restricted to prospective cohort studies or case-control studies yielded similar results, we present results from only the meta-analysis of all six participating studies. We also tested the heterogeneity of associations across studies as well as across different tumor subtypes by using the Q test [20].

All statistical analyses were performed by using SAS version 9.1 software (SAS Institute Inc., Cary, NC, USA). Power calculations were carried out by using Quanto (University of Southern California, Los Angeles, CA, USA). All *P* values were based on two-sided tests and were considered statistically significant if less than 0.05. Because SNPs were selected on the basis of an *a priori* hypothesis, adjustments for multiple comparison tests were not performed.

Results

The six participating studies contributed 3,683 breast cancer cases and 34,174 controls of self-reported white women of European ancestry (Table 1), all with available data on age and the 46 candidate SNPs, and at least one of the conventional risk factors considered. Of the 3,683 cases, about 52% were from the four prospective cohort studies (WGHS, RSI+II, FHS, and ARIC), about 30% were from the nested case-control study in NHS, and about 18% were from the population-based case-control study in Sardinia. ER status was known for 2,087 cases in the NHS and the WGHS. On average, compared with the controls, the cases had a younger age at menarche and an older age at natural menopause. The expected associations with breast cancer were generally observed for the conventional risk factors across all of the studies (Table S2 of Additional file 3). The associations of the 46 candidate SNPs with age at menarche or age at natural menopause in the six studies were consistent with the original findings from the two meta-analyses [10,11].

Table 2 shows the risk allele frequency and the corresponding per-risk-allele OR of breast cancer for each of the 46 candidate SNPs. The results are arranged in order of the strength of statistical significance (*P* value). The allele frequency for each SNP in the controls was similar to those reported for populations of European descent [21-23]. After adjusting for age and potential population stratification, we found that, among the 19 candidate SNPs for a younger age at menarche, two SNPs, rs1079866 and rs7821178, were significantly associated with breast cancer risk and had corresponding per-risk-allele ORs of 1.14 (95% CI = 1.05 to 1.24; *P* value = 0.003; *P* for heterogeneity = 0.37) and 1.08 (95% CI = 1.02 to 1.15; *P* value = 0.009; *P* for heterogeneity = 0.43), respectively. The SNP rs1079866 is located about 250 kb away from the *INHBA* gene on chromosome 7, whereas SNP rs7821178 is about 181 kb away from the *PXMP3* gene (also known as *PEX3*) on chromosome 8. The strongest GWAS hit for age at menarche, rs7759938 at *LIN28B* on chromosome 6, was not found to be associated with breast cancer risk (*P* value = 0.60). Of the 17 candidate SNPs associated with an older age at natural menopause, one SNP, rs2517388, was significantly associated with breast cancer risk with a per-risk-

allele OR of 1.10 (95% CI = 1.01 to 1.20; *P* value = 0.023; *P* for heterogeneity = 0.08). This SNP is an intronic SNP in the *ASH2L* gene on chromosome 8. The study-specific and summary ORs for the three associated SNPs are shown in Figure 1. Further adjustment for conventional risk factors - including age at menarche, age at natural menopause, age at first live birth, family history of breast cancer in first-degree relatives, alcohol consumption, parity, menopausal hormone therapy, OC use, and adult BMI - did not change the results substantially. For candidate loci for age at menarche and age at natural menopause, the findings did not differ materially when we further adjusted for known breast cancer-associated SNPs.

To evaluate the combined effect of candidate SNPs on breast cancer risk, we calculated a GRS for each trait by using either a count GRS or a weighted GRS approach. The mean values of count and weighted GRSs were 20.41 and 20.03, respectively, for age at menarche and 16.21 and 14.32, respectively, for age at natural menopause (Table 3). Based on the count GRS for a younger age at menarche, the OR for breast cancer associated with each point scored, corresponding to 1 risk allele, was 1.01 (95% CI = 1.00 to 1.03) after age and potential population stratification were adjusted for. ORs did not increase linearly across quintiles of GRS for age at menarche (*P* for trend = 0.06). Compared with women in the lowest quintile, women in the fourth and fifth quintiles had ORs for breast cancer of 1.14 (95% CI = 1.01 to 1.28) and 1.13 (95% CI = 1.00 to 1.27), respectively. Results were similar when analyses were performed by using weighted GRS. Overall, we did not observe statistically significant associations between breast cancer risk and age at natural menopause when either count or weighted GRS was used.

In secondary analyses, we then determined whether the associations of the 46 candidate SNPs with breast cancer vary across tumor subtypes defined by ER status in the NHS and the WGHS (Table 4). For the two SNPs (rs1079866 and rs7821178) that had reported associations with age at menarche and that were associated with overall breast cancer risk, we found no statistically significant evidence that the associations differed across subtypes (*P* for heterogeneity = 0.31 and 0.66, respectively), although rs1079866 appeared to have a stronger association with ER⁺ tumors (per-allele OR = 1.26; 95% CI = 1.12 to 1.41) than with ER⁻ tumors (per-allele OR = 1.11; 95% CI = 0.89 to 1.38). Of note, one SNP that had a reported association with age at menarche, rs17188434, had a significantly stronger association with ER⁻ tumors (per-allele OR = 1.51; 95% CI = 1.15 to 1.98) than with ER⁺ tumors (per-allele OR = 1.08; 95% CI = 0.92 to 1.26; *P* for heterogeneity = 0.035). Another SNP that had a reported association with age at

Table 2 Association of candidate single-nucleotide polymorphism loci and the risk of breast cancer

SNP	Gene(s) ^a	Distance from gene	Chromosome	Position (Build 36)	Risk/Reference alleles ^b	Effect allele	Allele frequency ^c of cases/controls ^d	Effect	SE	OR (95% CI) ^e	P value ^f	Direction ^g	P value for heterogeneity ^h
Age at menarche													
rs1079866	<i>INHBA</i>	~250 kb	7	41436618	C/G	c	0.87/0.85	0.132	0.044	1.14 (1.05-1.24)	0.003	+++	0.37
rs7821178	<i>PXMP3</i>	~181 kb	8	78256392	A/C	a	0.35/0.33	0.081	0.031	1.08 (1.02-1.15)	0.009	++++	0.43
rs7642134	<i>VGLL3</i>	~70 kb	3	86999572	A/G	a	0.39/0.38	0.058	0.03	1.06 (1.00-1.12)	0.056	+++++	0.83
rs10980926	<i>ZNF483</i>	Intronic	9	113333455	G/A	g	0.64/0.65	-0.057	0.031	0.94 (0.89-1.00)	0.066	---	0.58
rs1398217	<i>FUSSEL18</i>	Intronic	18	43006236	G/C	g	0.42/0.42	0.048	0.03	1.05 (0.99-1.11)	0.10	+++++	0.40
rs17188434	<i>NR4A2</i>	~84 kb	2	156805022	C/T	c	0.07/0.07	0.075	0.059	1.08 (0.96-1.21)	0.20	+++	0.34
rs13187289	<i>PHF15</i>	~12 kb	5	133877076	C/G	c	0.80/0.80	-0.038	0.038	0.96 (0.89-1.04)	0.32	---	0.03
rs12617311	<i>PLCL1</i>	~195 kb	2	199340810	A/G	a	0.32/0.32	-0.032	0.033	0.97 (0.91-1.03)	0.33	---	0.81
rs17268785	<i>CCDC85A</i>	Intronic	2	56445587	A/G	a	0.84/0.84	0.037	0.041	1.04 (0.96-1.12)	0.37	++++	0.89
rs2002675	<i>TRA2B, ETV5</i>	~4 kb, ~135 kb	3	187112262	A/G	a	0.58/0.57	0.022	0.03	1.02 (0.96-1.08)	0.47	++++	0.92
rs466639	<i>RXRG</i>	Intronic	1	163661506	T/C	t	0.12/0.12	-0.032	0.046	0.97 (0.89-1.06)	0.49	+++	0.35
rs1659127	<i>MKL2</i>	~28 kb	16	14295806	G/A	g	0.67/0.66	0.022	0.033	1.02 (0.96-1.09)	0.50	+++++	0.28
rs9635759	<i>CA10</i>	~94 kb	17	46968784	G/A	g	0.69/0.70	-0.021	0.034	0.98 (0.92-1.05)	0.54	+++	0.32
rs10899489	<i>GAB2</i>	Intronic	11	77773021	C/A	c	0.85/0.84	0.025	0.041	1.03 (0.95-1.11)	0.54	++++	0.97
rs10423674	<i>CRTC1</i>	Intronic	19	18678903	C/A	c	0.67/0.67	0.017	0.032	1.02 (0.96-1.08)	0.59	++++	0.60
rs7759938	<i>LIN28B</i>	~26 kb	6	105485647	T/C	t	0.69/0.69	-0.017	0.032	0.98 (0.92-1.05)	0.60	+++	0.53
rs2090409	<i>TMEM38B</i>	~400 kb	9	108006909	A/C	a	0.33/0.33	0.012	0.031	1.01 (0.95-1.08)	0.69	+++	0.21
rs6438424	<i>3q13.32</i>	Intergenic	3	119057512	A/C	a	0.50/0.50	0.002	0.029	1.00 (0.95-1.06)	0.94	+++	0.88
rs6589964	<i>BSX</i>	~18 kb	11	122375893	A/C	a	0.48/0.48	-0.001	0.031	1.00 (0.94-1.06)	0.99	++++	0.20
Age at natural menopause													
rs2517388	<i>ASH2L</i>	Intronic	8	38096889	G/T	g	0.17/0.16	0.096	0.042	1.10 (1.01-1.20)	0.023	++++	0.08

Table 2 Association of candidate single-nucleotide polymorphism loci and the risk of breast cancer (Continued)

rs4693089	<i>HEL308</i>	Intronic	4	84592646	G/A	g	0.47/0.48	-0.06	0.031	0.94 (0.89-1.00)	0.054	-----	0.38
rs11668344	<i>TMEM150B</i>	Intronic	19	60525476	A/G	a	0.64/0.64	-0.049	0.03	0.95 (0.90-1.01)	0.11	+-----	0.02
rs2307449	<i>POLG</i>	Intronic	15	87664932	T/G	t	0.60/0.61	-0.045	0.031	0.96 (0.90-1.02)	0.15	---++	0.20
rs16991615	<i>MCM8</i>	Missense	20	5896227	A/G	a	0.07/0.06	0.079	0.06	1.08 (0.96-1.22)	0.18	+++++	0.80
rs12294104	<i>C11orf46, PPED2</i>	~24 kb, ~49 kb	11	30339475	T/C	t	0.17/0.17	0.046	0.039	1.05 (0.97-1.13)	0.24	+++++	0.56
rs12461110	<i>NLRP11</i>	Missense	19	61012475	G/A	g	0.64/0.65	-0.036	0.031	0.96 (0.91-1.03)	0.24	++++	0.32
rs2303369	<i>FNDC4</i>	Intronic	2	27568920	C/T	c	0.62/0.63	-0.031	0.03	0.97 (0.91-1.03)	0.31	++++	0.22
rs4886238	<i>TDRD3</i>	Intronic	13	60011740	A/G	a	0.35/0.34	0.029	0.031	1.03 (0.97-1.09)	0.35	++---	0.79
rs2277339	<i>PRIM1</i>	Missense	12	55432336	T/G	t	0.90/0.89	0.037	0.05	1.04 (0.94-1.14)	0.46	++++-	0.47
rs10852344	<i>GSPT1, TNFRSF17</i>	~7 kb, ~42 kb	16	11924420	C/T	c	0.41/0.41	0.020	0.030	1.02 (0.96-1.08)	0.50	++++	0.87
rs10183486	<i>TLK1</i>	Intronic	2	171699217	C/T	c	0.62/0.62	-0.015	0.031	0.99 (0.93-1.05)	0.63	---++	0.98
rs4246511	<i>RHBDL2</i>	Intronic	1	39152972	T/C	t	0.27/0.27	0.016	0.035	1.02 (0.95-1.09)	0.66	++---	0.69
rs2153157	<i>SYCP2L</i>	Intronic	6	11005474	A/G	a	0.50/0.50	0.011	0.029	1.01 (0.96-1.07)	0.70	++++	0.59
rs1635501	<i>EXO1</i>	Intronic	1	240107398	T/C	t	0.53/0.52	0.011	0.034	1.01 (0.95-1.08)	0.74	++++	0.31
rs365132	<i>UIMC1</i>	Synonymous	5	176311180	T/G	t	0.50/0.50	-0.009	0.03	0.99 (0.93-1.05)	0.76	++++	0.58
rs1046089	<i>BAT2</i>	Missense	6	31710946	G/A	g	0.65/0.65	-0.008	0.031	0.99 (0.93-1.05)	0.79	++++	0.24
Breast cancer													
rs2981582	<i>FGFR2</i>	Intronic	10	123342307	A/G	a	0.44/0.38	0.188	0.03	1.21 (1.14-1.28)	4.7 × 10 ⁻¹⁰	+++++	0.10
rs3803662	<i>TOX3</i>	~6 kb	16	51143842	A/G	a	0.31/0.25	0.166	0.032	1.18 (1.11-1.26)	2.6 × 10 ⁻⁷	+++++	0.31
rs11249433	<i>FCGR1B</i>	~245 kb	1	120982136	G/A	g	0.44/0.46	0.149	0.031	1.16 (1.09-1.23)	1.9 × 10 ⁻⁶	+++++	0.26
rs7716600	<i>MRPS30</i>	~59 kb	5	44910762	A/C	a	0.24/0.20	0.148	0.035	1.16 (1.08-1.24)	2.3 × 10 ⁻⁵	+++++	0.80
rs13387042	<i>TNP1</i>	~181 kb	2	217614077	A/G	a	0.55/0.50	0.114	0.029	1.12 (1.06-1.19)	1.0 × 10 ⁻⁴	+++++	0.20
rs889312	<i>MAP3K1</i>	~43 kb	5	56067641	C/A	c	0.30/0.32	0.122	0.032	1.13 (1.06-1.20)	1.5 × 10 ⁻⁴	+++++	0.65

Table 2 Association of candidate single-nucleotide polymorphism loci and the risk of breast cancer (Continued)

rs13281615	8q24.21	Intergenic	8	128424800	G/A	g	0.43/0.50	0.107	0.03	1.11 (1.05-1.18)	3.0 × 10 ⁻⁴	++++-	0.01
rs999737	RAD51L1	Intronic	14	68104435	C/T	c	0.77/0.80	0.079	0.035	1.08 (1.01-1.16)	0.024	+++++	0.31
rs3817198	LSP1	Intronic	11	1865582	C/T	c	0.32/0.34	0.049	0.032	1.05 (0.99-1.12)	0.13	+++++	0.45
rs1045485	CASP8	Missense	2	201857834	G/C	g	0.88/0.92	0.067	0.045	1.07 (0.98-1.17)	0.13	++-++	0.75

^aNearest gene(s); ^bthe risk allele refers to the allele associated with a younger age at menarche, an older age at natural menopause, or an increased risk of breast cancer; ^ceffect allele frequency; ^deffect allele frequency in case or control subjects, respectively; ^eper effect allele change in log odds ratio (OR) of breast cancer; ^fP value from meta-analysis with additive genetic coding after adjustment for age and top genetic principle components; ^gdirection of effect allele association with breast cancer in the six studies in order: Nurses' Health Study, Women's Genome Health Study, SardiNIA Breast Cancer Study, Rotterdam Study I and II, Framingham Heart Study, and Atherosclerosis Risk in Communities Study; ^hP value from heterogeneity test across studies with 5 degrees of freedom. CI, confidence interval; SE, standard error; SNP, single-nucleotide polymorphism.

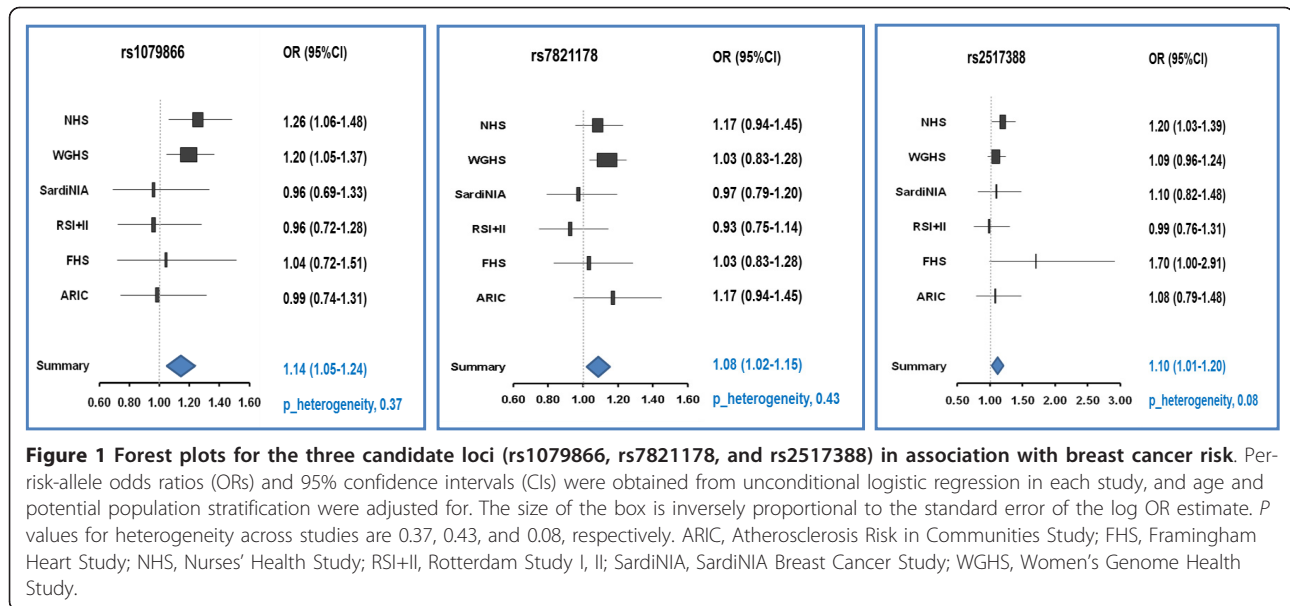


Table 3 Association between genetic risk score and risk of breast cancer

	Continuous GRS	Quintile 1	Quintile 2	Quintile 3	Quintile 4	Quintile 5	<i>P</i> for trend
Count GRS ^a							
Age at menarche							
Cases/Controls	3,683/34,174	677/6,694	739/6,814	731/6,788	783/6,915	753/6,963	
Mean/Median GRS (range) ^b	20.41 (9.12-31.95)	17.00 (9.12-18.09)	19.02 (18.09-19.86)	20.37 (19.86-21.05)	21.90 (21.05-22.74)	23.89 (22.74-31.95)	
OR (95% CI) ^c	1.01 (1.00-1.03)	1.00	1.10 (0.97-1.24)	1.01 (0.89-1.14)	1.14 (1.01-1.28)	1.13 (1.00-1.27)	0.06
Age at natural menopause							
Cases/Controls	3,683/34,174	740/6,699	751/6,948	719/6,787	755/6,929	718/6,811	
Mean/Median GRS (range) ^b	16.21 (4.15-26.52)	12.95 (4.15-14.01)	14.91 (14.01-15.62)	16.15 (15.62-16.90)	17.64 (16.90-18.37)	19.55 (18.37-26.52)	
OR (95% CI) ^c	1.00 (0.98-1.01)	1.00	1.02 (0.90-1.15)	0.93 (0.82-1.05)	1.02 (0.90-1.14)	0.98 (0.87-1.11)	0.54
Breast cancer							
Cases/Controls	3,683/34,174	537/6,864	542/6,525	660/6,716	956/7,352	988/6,717	
Mean/Median GRS (range) ^b	8.88 (1.06-16.96)	6.04 (1.06-7.01)	7.99 (7.01-8.05)	8.99 (8.05-9.07)	9.99 (9.07-10.86)	11.31 (10.86-16.96)	
OR (95% CI) ^c	1.13 (1.11-1.15)	1.00	1.19 (1.04-1.37)	1.38 (1.21-1.57)	1.60 (1.41-1.81)	1.89 (1.67-2.14)	1.5 × 10 ⁻³¹
Weighted GRS ^a							
Age at menarche							
Cases/Controls	3,683/34,174	762/8,961	711/6,811	752/6,287	728/6,059	736/6,056	
Mean/Median GRS (range) ^b	20.03 (7.15-32.17)	16.12(7.15-17.50)	18.47 (17.50-19.31)	20.07 (19.31-20.83)	21.63 (20.83-22.55)	23.82 (22.55-32.17)	
OR (95% CI) ^c	1.01 (1.00-1.03)	1.00	1.02 (0.90-1.15)	0.99 (0.88-1.13)	1.02 (0.90-1.16)	1.11 (0.98-1.26)	0.12
Age at natural menopause							
Cases/Controls	3,683/34,174	749/7,038	728/6,915	756/6,749	696/6,668	755/6,804	
Mean/Median GRS (range) ^b	14.32 (2.78-26.21)	11.13 (2.78-12.18)	12.96 (12.18-13.61)	14.24 (13.61-14.88)	15.57 (14.88-16.39)	17.63 (16.39-26.21)	
OR (95% CI) ^c	1.00 (0.98-1.01)	1.00	1.07 (0.95-1.20)	0.97 (0.86-1.09)	1.00 (0.88-1.13)	1.03 (0.91-1.16)	0.73

^aSee the 'Materials and methods' section for count genetic risk score (GRS) and weighted GRS computation; ^bmean for continuous GRS and median for each quintile; ^cadjusted for age and potential population stratification. CI, confidence interval; OR, odds ratio.

Table 4 Association of candidate single-nucleotide polymorphism loci and risk of breast cancer by estrogen receptor status in the Nurses' Health Study and Women's Genome Health Study

SNP	All cases		ER ⁺		ER ⁻		ER ⁺ /ER ⁻ P value for heterogeneity ^c
	OR (95% CI) ^a	P value ^b	OR (95% CI) ^a	P value ^b	OR (95% CI) ^a	P value ^b	
Cases/Controls ^d	2,087/23,319		1,716/23,319		371/23,319		
Age at menarche							
rs1079866	1.22 (1.10-1.35)	2.0 × 10 ⁻⁴	1.26 (1.12-1.41)	7.3 × 10 ⁻⁵	1.11 (0.89-1.38)	0.34	0.31
rs7821178	1.12 (1.04-1.20)	3.3 × 10 ⁻³	1.10 (1.01-1.19)	0.025	1.14 (0.98-1.34)	0.10	0.66
rs17188434	1.15 (1.00-1.33)	0.048	1.08 (0.92-1.26)	0.34	1.51 (1.15-1.98)	2.7 × 10 ⁻³	0.035
rs13187289	0.92 (0.84-1.00)	0.055	0.90 (0.82-0.99)	0.026	1.05 (0.87-1.28)	0.60	0.15
rs10980926	0.93 (0.87-1.00)	0.067	0.94 (0.87-1.02)	0.14	0.90 (0.77-1.05)	0.17	0.58
rs7642134	1.06 (0.99-1.14)	0.12	1.07 (0.99-1.16)	0.089	1.09 (0.93-1.27)	0.28	0.86
rs10423674	1.05 (0.97-1.13)	0.22	1.06 (0.97-1.15)	0.19	0.95 (0.81-1.11)	0.50	0.23
rs6589964	0.95 (0.89-1.03)	0.22	0.94 (0.87-1.02)	0.13	1.00 (0.85-1.17)	0.98	0.51
rs1398217	1.04 (0.97-1.12)	0.25	1.02 (0.95-1.10)	0.57	1.11 (0.95-1.29)	0.19	0.36
rs1659127	1.03 (0.96-1.12)	0.41	1.00 (0.92-1.09)	0.98	1.09 (0.92-1.29)	0.32	0.38
rs12617311	0.97 (0.89-1.05)	0.44	1.00 (0.91-1.09)	0.93	0.94 (0.79-1.12)	0.48	0.56
rs17268785	1.04 (0.94-1.14)	0.48	1.07 (0.96-1.19)	0.22	0.83 (0.68-1.00)	0.055	0.023
rs2090409	0.97 (0.90-1.05)	0.50	0.96 (0.89-1.05)	0.38	0.98 (0.84-1.15)	0.82	0.85
rs10899489	1.03 (0.93-1.14)	0.52	1.02 (0.92-1.14)	0.67	0.98 (0.79-1.21)	0.86	0.72
rs6438424	0.98 (0.91-1.05)	0.55	0.99 (0.92-1.07)	0.79	0.98 (0.84-1.14)	0.76	0.88
rs2002675	1.02 (0.95-1.10)	0.55	1.04 (0.96-1.12)	0.35	0.94 (0.81-1.10)	0.45	0.27
rs466639	1.02 (0.92-1.14)	0.73	1.05 (0.94-1.18)	0.39	0.94 (0.74-1.20)	0.62	0.41
rs7759938	1.01 (0.93-1.09)	0.84	1.02 (0.94-1.11)	0.63	1.00 (0.84-1.17)	0.96	0.80
rs9635759	1.01 (0.93-1.09)	0.88	1.00 (0.92-1.09)	0.98	1.03 (0.87-1.22)	0.72	0.74
Age at natural menopause							
rs2517388	1.14 (1.03-1.25)	0.010	1.11 (1.00-1.24)	0.046	1.32 (1.09-1.61)	4.7 × 10 ⁻³	0.12
rs2303369	0.93 (0.86-1.00)	0.036	0.93 (0.86-1.01)	0.076	0.94 (0.80-1.09)	0.42	0.94
rs12461110	0.93 (0.86-1.00)	0.042	0.91 (0.84-0.99)	0.022	0.95 (0.81-1.11)	0.50	0.66
rs4886238	1.06 (0.99-1.14)	0.11	1.06 (0.98-1.15)	0.14	1.03 (0.88-1.21)	0.68	0.76
rs16991615	1.09 (0.94-1.26)	0.23	1.13 (0.97-1.32)	0.12	0.99 (0.71-1.37)	0.94	0.46
rs2277339	1.07 (0.95-1.20)	0.28	1.09 (0.96-1.24)	0.21	1.02 (0.80-1.31)	0.85	0.68
rs12294104	1.04 (0.95-1.14)	0.41	1.06 (0.96-1.17)	0.28	0.98 (0.80-1.21)	0.89	0.54
rs4246511	1.03 (0.95-1.12)	0.42	1.05 (0.96-1.15)	0.29	0.95 (0.79-1.14)	0.59	0.34
rs10852344	1.03 (0.96-1.10)	0.42	1.04 (0.96-1.12)	0.31	0.99 (0.85-1.15)	0.88	0.56
rs2153157	1.03 (0.96-1.10)	0.45	1.04 (0.96-1.12)	0.32	1.00 (0.87-1.17)	0.95	0.69
rs4693089	0.98 (0.91-1.05)	0.54	0.98 (0.91-1.07)	0.68	0.91 (0.77-1.06)	0.23	0.37
rs10183486	0.98 (0.91-1.06)	0.67	0.98 (0.91-1.06)	0.64	0.91 (0.78-1.06)	0.23	0.39
rs2307449	0.99 (0.92-1.06)	0.72	0.96 (0.89-1.04)	0.36	1.06 (0.91-1.24)	0.47	0.29
rs1635501	0.99 (0.91-1.07)	0.76	0.99 (0.90-1.08)	0.80	0.99 (0.83-1.19)	0.94	0.97
rs11668344	1.01 (0.94-1.08)	0.81	1.00 (0.92-1.08)	0.92	1.05 (0.89-1.22)	0.58	0.59
rs1046089	0.99 (0.92-1.07)	0.89	1.02 (0.94-1.10)	0.67	0.90 (0.77-1.05)	0.19	0.17
rs365132	1.00 (0.93-1.07)	0.97	1.00 (0.93-1.08)	1.00	1.00 (0.86-1.16)	0.95	0.96
Breast cancer							
rs11249433	1.20 (1.12-1.29)	4.8 × 10 ⁻⁷	1.23 (1.14-1.33)	6.9 × 10 ⁻⁸	1.06 (0.91-1.23)	0.45	0.081
rs3803662	1.20 (1.12-1.30)	1.8 × 10 ⁻⁶	1.26 (1.16-1.37)	4.2 × 10 ⁻⁸	0.98 (0.82-1.16)	0.78	0.008
rs2981582	1.18 (1.10-1.27)	8.2 × 10 ⁻⁶	1.19 (1.10-1.29)	1.1 × 10 ⁻⁵	1.01 (0.87-1.19)	0.86	0.071
rs13281615	1.16 (1.08-1.24)	3.9 × 10 ⁻⁵	1.16 (1.07-1.25)	2.1 × 10 ⁻⁴	1.15 (0.99-1.33)	0.074	0.94
rs13387042	1.15 (1.07-1.23)	8.4 × 10 ⁻⁵	1.17 (1.08-1.26)	6.3 × 10 ⁻⁵	1.01 (0.87-1.18)	0.85	0.10
rs7716600	1.17 (1.08-1.27)	1.6 × 10 ⁻⁴	1.18 (1.08-1.29)	2.9 × 10 ⁻⁴	1.21 (1.02-1.44)	0.029	0.77
rs889312	1.10 (1.02-1.19)	0.012	1.10 (1.01-1.20)	0.026	1.18 (1.00-1.39)	0.046	0.45
rs999737	1.09 (1.00-1.18)	0.049	1.10 (1.01-1.21)	0.031	0.99 (0.84-1.18)	0.95	0.29

Table 4 Association of candidate single-nucleotide polymorphism loci and risk of breast cancer by estrogen receptor status in the Nurses' Health Study and Women's Genome Health Study (Continued)

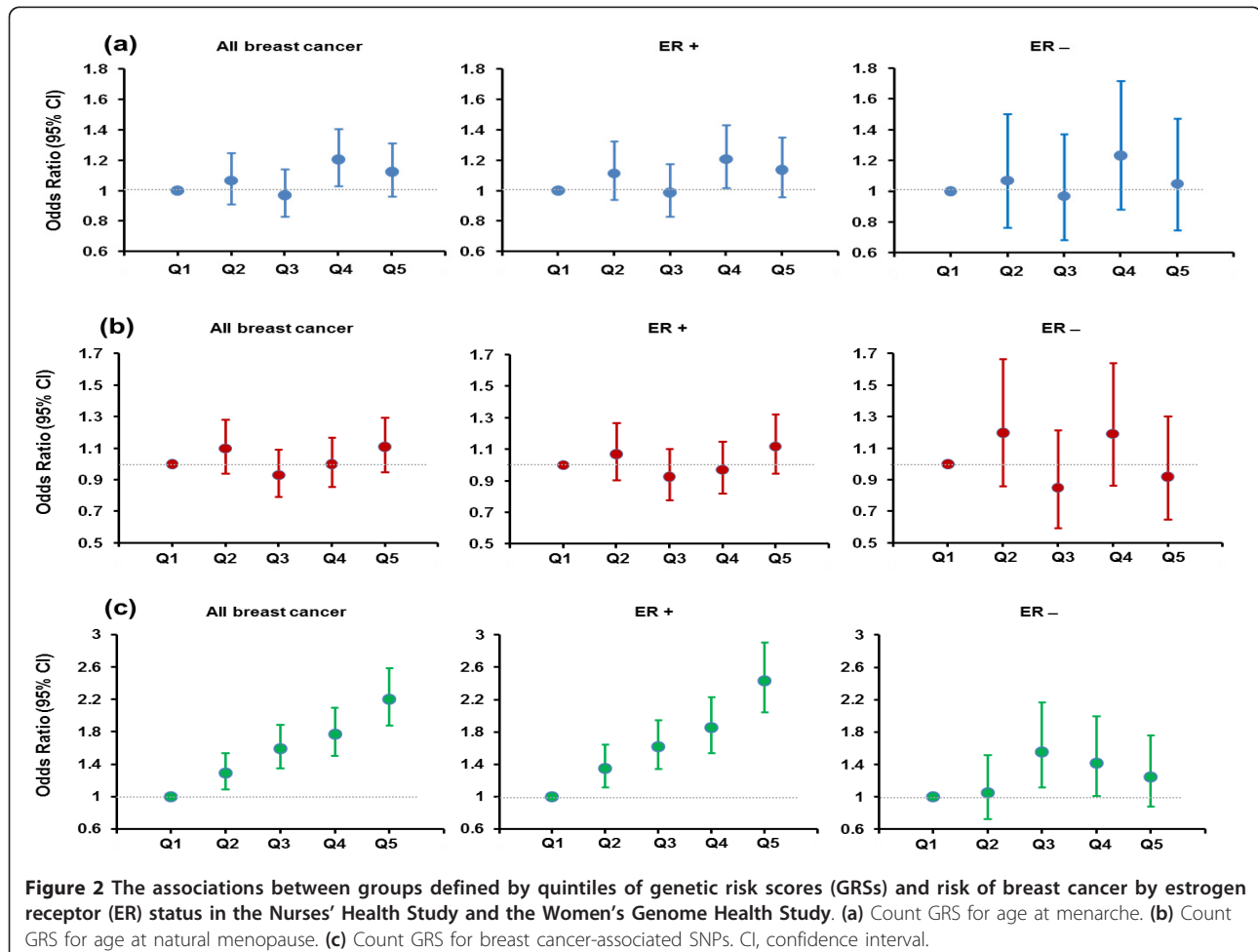
rs1045485	1.09 (0.98-1.20)	0.12	1.06 (0.95-1.19)	0.28	1.20 (0.95-1.52)	0.12	0.35
rs3817198	1.03 (0.96-1.12)	0.38	1.06 (0.98-1.15)	0.16	0.88 (0.74-1.04)	0.13	0.047

^aPer-risk-allele odds ratio (OR) of breast cancer; ^b*P* value from meta-analysis of the Nurses' Health Study (NHS) and the Women's Genome Health Study (WGHS) with additive genetic coding after adjustment for age and potential population stratification; ^c*P* value from heterogeneity test across estrogen receptor-positive (ER⁺) and ER⁻ tumors; ^dtotal number of cases or controls in the NHS and the WGHS. CI, confidence interval; SNP, single-nucleotide polymorphism.

menarche, rs17268785, was associated with a decreased risk of ER⁻ tumors (per-allele OR = 0.83; 95% CI = 0.68 to 1.00) but an increased risk of ER⁺ tumors (per-allele OR = 1.07; 95% CI = 0.96 to 1.19; *P* for heterogeneity = 0.023). For the SNP that had a reported association with age at natural menopause and that was associated with overall breast cancer risk, we observed a stronger association with ER⁻ tumors (per-allele OR = 1.32; 95% CI = 1.09 to 1.61) than ER⁺ tumors (per-allele OR = 1.11; 95% CI = 1.00 to 1.24); however, the test for heterogeneity was not statistically significant (*P* for heterogeneity = 0.12). When the count GRS for age at menarche or age at natural menopause was applied to ER⁺ and ER⁻

breast cancer separately, the trend in the OR for ER⁺ tumors was very similar to that for overall breast cancer. The ER⁻ tumor data suggested a somewhat different pattern, although the statistical power was limited for this subtype (Figure 2).

Of the 10 candidate SNPs with consistently reported associations with breast cancer risk, five SNPs (rs11249433, rs3803662, rs2981582, rs13387042, and rs999737) appeared to have a stronger association with ER⁺ tumor than ER⁻ tumors, and rs3803662 reached statistical significance (*P* for heterogeneity = 0.008) with per-risk-allele ORs of 1.26 (95% CI = 1.16 to 1.37) and 0.98 (95% CI = 0.82 to 1.16) for ER⁺ and ER⁻ tumors,



respectively (Table 4). Two breast cancer candidate SNPs, rs1045485 and rs3817198, did not show statistically significant associations with overall risk. However, rs1045485 appeared to have a stronger association with ER⁻ tumors (per-allele OR = 1.20; 95% CI = 0.95 to 1.52) than ER⁺ tumors (per-allele OR = 1.06; 95% CI = 0.95 to 1.19; *P* for heterogeneity = 0.35), and rs3817198 was associated with a decreased risk of ER⁻ tumors (per-allele OR = 0.88; 95% CI = 0.74 to 1.04) but an increased risk of ER⁺ tumors (per-allele OR = 1.06; 95% CI = 0.98 to 1.15; *P* for heterogeneity = 0.047).

In these analyses, we further confirmed statistically significant associations with breast cancer risk for 8 of the 10 candidate SNPs that were identified previously in published GWAS of breast cancer (most *P* values were less than 0.001) (Table 2). We did not observe a statistically significant association for either *LSP1*-rs3817198 or *CASP8*-rs1045485 (both with *P* values of 0.13) in our study, although the direction of the associations was consistent with that of previous reports [21,22]. We also calculated, as a positive control, a count GRS based on these 10 SNPs. We found that each score point increase, corresponding to one-risk-allele increase, was significantly associated with an OR of 1.13 (95% CI = 1.11 to 1.15) for breast cancer (Table 3). Compared with women in the lowest quintile, women in the highest quintile had an OR for breast cancer of 1.89 (95% CI = 1.67 to 2.14). For this GRS, the trend in log odds was significantly steeper for ER⁺ than for ER⁻ tumors (*P* for heterogeneity < 0.001), and the OR across quintiles was no longer monotonic in ER⁻ tumors (Figure 2).

Discussion

In this large meta-analysis of six population-based studies, we investigated whether 19 loci linked with age at menarche and 17 loci linked with age at natural menopause were associated with breast cancer risk among up to 3,683 breast cancer cases and 34,174 controls. We found that two SNPs with reported associations with age at menarche and one SNP with a reported association with age at natural menopause were significantly associated with breast cancer risk. However, no statistically significant associations were found for GRSs that combined all 19 or 17 loci associated with each trait, although the association for age-at-menarche GRS was marginally statistically significant. We confirmed most of the candidate loci for breast cancer which were identified in previous GWAS. Some of these associations appeared to differ by tumor subtypes defined by ER status.

In our analyses, most of the candidate SNPs, including the strongest GWAS hit for age at menarche or age at natural menopause, were not found to be associated with breast cancer risk. This is not necessarily surprising

given that age at menarche and age at natural menopause are relatively weak risk factors [2,3], and all candidate SNPs collectively explain only a small portion of the variation of each trait [10,11]. However, two candidate SNPs for age at menarche, rs1079866 and rs7821178, and one candidate SNP for age at natural menopause, rs2517388, were found to be associated with breast cancer risk. These associations were not attenuated after we further adjusted for self-reported age at menarche and age at natural menopause, suggesting these three genetic loci were associated with breast cancer risk independently of their associations with age at menarche or age at natural menopause. It is possible that these genetic loci have pleiotropic effects on reproductive timing as well as other biological processes leading to breast cancer, and the observed associations might be due largely to other biological consequences of these risk variants that do not manifest themselves as changes in age at menarche or age at natural menopause. Alternatively, it is also possible that the relatively crude assignment of these reproductive events to a single chronological year is not sufficiently accurate to capture the biological effect of these processes on breast cancer risk and the genetic variants contribute independent information on the underlying biological risk. The three candidate SNPs also contributed to breast cancer risk independently of the known susceptibility loci for breast cancer, as further adjustment for breast cancer loci did not materially alter the results.

We found statistically significant evidence of association with breast cancer for eight of the 10 breast cancer susceptibility loci examined: *FGFR2*-rs2981582, *TNRC9*-rs3803662, 1p-rs11249433, 5p-rs7716600, 2q35-rs13387042, *MAP3K1*-rs889312, 8q24-rs13281615, and *RAD51L1*-rs999737. The direction and magnitude of these associations were consistent with those of previous reports [17,18,22-25]. We did not observe a statistically significant association for either *LSP1*-rs3817198 or *CASP8*-rs1045485. However, these two SNPs had relatively small reported effects that our study might not have been able to detect. When the 10 candidate SNPs were combined by using a polygenic risk score, the relative risk for women in the highest quintile was about twice that in the lowest quintile, and this is in accordance with other published results [19,26]. In this study, none of the 10 breast cancer susceptibility loci was significantly associated with age at menarche or age at natural menopause, and this is in line with a previous report [27].

Given that most of the candidate loci for age at menarche and age at natural menopause were not associated with breast cancer risk, it is not surprising that there were no statistically significant associations for the polygenic risk scores that combined all candidate loci

for each trait. To conduct a *post hoc* and exploratory analysis, we created a polygenetic risk score by including only the three candidate loci associated with either age at menarche or age at natural menopause and with breast cancer risk and found that each risk allele increment was associated with an approximately 17% increased risk for breast cancer. Women with four or more risk alleles had an approximately 60% increased risk for breast cancer in comparison with those with two risk alleles or less. When we further combined the three associated SNPs with the 10 breast cancer susceptibility loci to create a polygenetic risk score, each risk allele increment was associated with an approximately 18% increased risk for breast cancer. For women with 14 or more risk alleles (the highest quintile), the risk for breast cancer increased threefold in comparison with those with 10 or less (the lowest quintile). Because the former group constitutes approximately 20% of the study population, the GRS that combines the three candidate SNPs for age at menarche and age at natural menopause and the identified breast cancer susceptibility loci might be useful for identifying a subgroup of women with a high genetic risk for breast cancer. Further research is needed to confirm this finding.

It has been hypothesized that the risk of ER⁺ breast cancer is positively associated with a woman's cumulative lifetime exposure to endogenous ovarian hormones [28]. A younger age at menarche [12,15,29] and an older age at menopause [30] have been observed to be more consistently associated with ER⁺ than ER⁻ tumors. In this report, we found that candidate loci for age at menarche and age at natural menopause may also be differentially associated with tumor subtypes defined by ER status. Of the three candidate loci that were found to be associated with overall breast cancer risk, rs1079866 was more strongly associated with ER⁺ tumors, rs7821178 was equally associated with both, whereas rs2517388 was more strongly associated with ER⁻ tumors, although differences were not statistically significant. Importantly, two candidate loci for age at menarche, rs17188434 and rs17268785, had significantly different associations with ER⁺ and ER⁻ tumors. Whereas both SNPs were not significantly associated with overall and ER⁺ breast cancer, the former showed a statistically significant positive association with ER⁻ tumors, whereas the latter showed a statistically significant inverse association with ER⁻ tumor. These findings provide further support for the notion that ER⁺ and ER⁻ tumors are the result of different etiologic pathways [31].

Although common genetic variants that influence the intermediate phenotypes or risk factors have been hypothesized to subsequently affect disease risk, few studies have assessed the association between these genetic

variants and disease risk or, furthermore, whether these associations are mediated through the intermediate phenotypes. Chen and colleagues [32] investigated obesity-linked genetic variants in relation to breast cancer risk but found no statistically significant association. To our knowledge, ours is the first study to evaluate the associations of candidate loci for age at menarche and age at natural menopause with breast cancer risk. One of the strengths of our study is the relatively large combined sample size achieved through international collaboration. We had adequate statistical power (80%) to detect an OR of 1.12 for SNPs with a minor allele frequency (MAF) of 0.10 and an OR of 1.09 for SNPs with an MAF of 0.20. However, our analysis of ER⁺ tumors was less adequately powered, as the ER status was not available for all cases, and the study had limited statistical power for ER⁻ tumors. One limitation in our study is the multiple comparisons that could lead to false-positive results. Although none of the candidate SNPs with a reported association with age at menarche or age at natural menopause survived Bonferroni correction in the test of breast cancer association, this correction is considered to be overly conservative given that the candidates were chosen on the basis of promising hypotheses. Another potential limitation of our study comes from differences in the study population and designs and methods of collecting risk factors and genetic marker data across studies. However, the findings were generally consistent across studies, arguing for the robustness of our results. Finally, as our analyses were restricted to women of European ancestry, results from this study may not be generalizable to other ethnic groups.

Conclusions

In summary, in this large analysis of the association of several novel candidate loci for age at menarche and age at natural menopause with breast cancer risk, we observed that three loci - two for age at menarche and one for age at natural menopause - were significantly associated with breast cancer risk independently of their associations with each trait and independently of known breast cancer susceptibility loci. These associations may differ by tumor subtypes defined by ER status. A combination of all 19 loci associated with age at menarche or 17 loci associated with age at natural menopause did not appear to be helpful for identifying a high-risk subgroup for breast cancer.

Additional material

Additional file 1: Supplementary methods for study population.

Additional file 2: Table S1: Information on the 46 candidate SNP loci identified in previous genome-wide association studies for age at menarche, age at natural menopause and breast cancer.

Additional file 3: Table S2: Characteristics of non-genetic risk factors for breast cancer in each participating study.

Abbreviations

ARIC: Atherosclerosis Risk in Communities Study; BMI: body mass index; CI: confidence interval; ER: estrogen receptor; FHS: Framingham Heart Study; GRS: genetic risk score; GWAS: genome-wide association studies; MAF: minor allele frequency; NHS: Nurses' Health Study; OC: oral contraceptive; OR: odds ratio; RSI-II: Rotterdam Study I and II; SardiNIA: SardiNIA Breast Cancer Study; SNP: single-nucleotide polymorphism; WGHS: Women's Genome Health Study.

Acknowledgements

The NHS breast cancer GWAS scan was performed as part of the Cancer Genetic Markers of Susceptibility initiative of the National Cancer Institute (NCI). We particularly acknowledge the contributions of Robert Hoover, Amy Hutchinson, Kevin Jacobs, and Gilles Thomas. The present research is supported by CA 40356 and U01-CA98233 from the NCI. We acknowledge the study participants in the NHS for their contribution in making this study possible. The WGHS is supported by HL 043851 and HL69757 from the National Heart, Lung, and Blood Institute (NHLBI) and CA 047988 from the NCI, the Donald W Reynolds Foundation, and the Fondation Leducq, and collaborative scientific support and funding for genotyping were provided by Amgen (Thousand Oaks, CA, USA). We thank Joseph Miletich and Alex Parker and the technical staff at Amgen for their collaboration and scientific support in performing the genotyping for the WGHS. The SardiNIA Breast Cancer Study was funded by National Institutes of Health (NIH) contract N01-AG-1-2109 from the National Institute of Aging (NIA) to the SardiNIA team (principal investigator: Manuela Uda). We thank Grazia Palomba, Antonio Cossu, Francesco Tanda, Mario Budroni, and the other members of the Sardinian Translational Oncology Group for their contribution in collecting Sardinian patients with breast cancer. The generation and management of GWAS genotype data for the Rotterdam Study are supported by The Netherlands Organisation for Scientific Research (NWO) Investments (175.010.2005.011 and 911-03-012). This study is funded by the Research Institute for Diseases in the Elderly (RIDE2) (014-93-015) and The Netherlands Genomics Initiative/NWO project 050-060-810. We thank Pascal Arp, Mila Jhamai, Marijn Verkerk, Lizbeth Herrera, and Marjolein Peters for their help in creating the GWAS database and Karol Estrada and Maksim V Struchalin for their support in creation and analysis of imputed data. The Rotterdam Study is funded by the Erasmus Medical Center and Erasmus University, Rotterdam; the Netherlands Organisation for Health Research and Development (ZonMw); the Research Institute for Diseases in the Elderly (RIDE); the Ministry of Education, Culture and Science; the Ministry for Health, Welfare and Sports; the European Commission (DG XII); and the Municipality of Rotterdam. The authors are grateful to the study participants, the staff from the Rotterdam Study, and the participating general practitioners and pharmacists. The authors acknowledge the essential role of the Cohorts for Heart and Aging Research in Genome Epidemiology (CHARGE) Consortium in the development and support of this manuscript. CHARGE members consist of The Netherlands' Rotterdam Study, the FHS, the Cardiovascular Health Study, the NHLBI's ARIC study, and the NIA's Iceland Age, Gene/Environment Susceptibility (AGES) study. The FHS phenotype-genotype analyses were supported in part by the NIA (Genetics of Reproductive Life Period and Health Outcomes, R21AG032598; JMM, KLL). The FHS of the NHLBI of the NIH and Boston University School of Medicine was supported by NHLBI's FHS contract N01-HC-25195 and its contract with Affymetrix, Inc. (Santa Clara, CA, USA) for genotyping services (contract N02-HL-6-4278). Analyses reflect intellectual input and resource development from the FHS investigators participating in the SNP Health Association Resource (SHARe) project. A portion of this research was conducted by using the Linux Cluster for Genetic Analysis (LinGA-II) funded by the Robert Dawson Evans Endowment of the Department of Medicine at Boston University School of Medicine and Boston Medical Center. The ARIC study is carried out as a collaborative study supported by NHLBI contracts N01-HC-

55015, N01-HC-55016, N01-HC-55018, N01-HC-55019, N01-HC-55020, N01-HC-55021, N01-HC-55022, R01HL087641, R01HL59367, R01HL086694, and RC2 HL102419; National Human Genome Research Institute contract U01HG004402; and NIH contract HHSN268200625226C. The authors thank the staff and participants of the ARIC study for their important contributions. Infrastructure was partly supported by grant UL1RR025005, a component of the NIH, and NIH Roadmap for Medical Research.

Author details

¹Department of Public Health, Indiana University School of Medicine, 980 West Walnut Street, R3-C241, Indianapolis, IN 46202, USA. ²Indiana University Melvin and Bren Simon Cancer Center, 535 Barnhill Drive, Indianapolis, IN 46202, USA. ³Division of Preventive Medicine, Brigham and Women's Hospital, Harvard Medical School, 900 Commonwealth Avenue East, Boston, MA 02215, USA. ⁴Division of Epidemiology and Community Health, School of Public Health, 1300 South Second Street, Suite 300, University of Minnesota, Minneapolis, MN 55454, USA. ⁵Framingham Heart Study, The National Heart Lung and Blood Institute, 73 Mount Wayte, Suite 2, Framingham, MA 01701, USA. ⁶Department of Epidemiology, Erasmus Medical Center, 3015 GE, Rotterdam, The Netherlands. ⁷Istituto di Ricerca Genetica e Biomedica, Consiglio Nazionale delle Ricerche, c/o Cittadella Universitaria di Monserrato, Monserrato, 09042 Cagliari, Italy. ⁸Department of Epidemiology, Gillings School of Global Public Health, University of North Carolina at Chapel Hill, 137 East Franklin Street, Suite 306, CB #8050, Chapel Hill, NC 27599, USA. ⁹Department of Epidemiology, Harvard School of Public Health, 677 Huntington Avenue, Boston, MA 02115, USA. ¹⁰Channing Laboratory, Department of Medicine, Brigham and Women's Hospital, and Harvard medical School, 181 Longwood Avenue, Boston, MA 02115, USA. ¹¹Department of Biostatistics, Boston University School of Public Health, 801 Massachusetts Avenue, 3rd floor, Boston, MA 02118, USA. ¹²Unit of Cancer Genetics, Istituto di Chimica Biomolecolare, Consiglio Nazionale delle Ricerche, Li Punti, 07100 Sassari, Italy. ¹³Department of Internal Medicine, Erasmus Medical Center, 3000 CA, Rotterdam, The Netherlands. ¹⁴Netherlands Consortium of Healthy Aging, Rotterdam, Rotterdam, The Netherlands. ¹⁵Division of Cancer Epidemiology and Genetics, National Cancer Institute, National Institutes of Health, Department of Health and Human Services, 6120 Executive Boulevard, Bethesda, MD 20892, USA. ¹⁶Sections of General Internal Medicine, Department of Medicine, Boston University School of Medicine, 720 East Concord Street, Boston, MA 02118, USA. ¹⁷Program in Medical and Population Genetics, Broad Institute of Harvard University and MIT, 301 Binney Street, Cambridge, MA 02142, USA.

Authors' contributions

CH performed the meta-analysis, wrote the manuscript, helped to conceive and design the experiments, helped to perform the primary statistical analyses in each study, shared responsibility for the interpretation of results and critical revision of the manuscript, and contributed to a critical revision of the manuscript for important intellectual content. DIC helped to conceive and design the experiments, helped to perform the primary statistical analyses in each study, shared responsibility for the interpretation of results and critical revision of the manuscript, and contributed to a critical revision of the manuscript for important intellectual content. DJH helped to conceive and design the experiments, contributed to a critical revision of the manuscript for important intellectual content, and participated in the original design, subject recruitment, acquisition of data, biospecimen collection for the studies, and the genotyping and quality control of genotype and other data. JD, SJH, RR, and SS helped to perform the primary statistical analyses in each study and shared responsibility for the interpretation of results and critical revision of the manuscript. SJC, LC, EWD, JMM, PMR, and BHS contributed to a critical revision of the manuscript for important intellectual content and participated in the original design, subject recruitment, acquisition of data, biospecimen collection for the studies, and the genotyping and quality control of genotype and other data. JEB, LF-R, NF, SEH, AH, KLL, GP, EP, FR, LMR, GLS, LS, and AGU participated in the original design, subject recruitment, acquisition of data, biospecimen collection for the studies, and the genotyping and quality control of genotype and other data. All authors read and approved the final manuscript.

Competing interests

The authors declare that they have no competing interests.

Received: 10 November 2011 Revised: 31 January 2012
Accepted: 20 March 2012 Published: 20 March 2012

References

1. Kelsey JL, Horn-Ross PL: **Breast cancer: magnitude of the problem and descriptive epidemiology.** *Epidemiol Rev* 1993, **15**:7-16.
2. Hsieh CC, Trichopoulos D, Katsouyanni K, Yuasa S: **Age at menarche, age at menopause, height and obesity as risk factors for breast cancer: associations and interactions in an international case-control study.** *Int J Cancer* 1990, **46**:796-800.
3. **Breast cancer and hormone replacement therapy: collaborative reanalysis of data from 51 epidemiological studies of 52,705 women with breast cancer and 108,411 women without breast cancer.** Collaborative Group on Hormonal Factors in Breast Cancer. *Lancet* 1997, **350**:1047-1059.
4. Pike MC, Spicer DV, Dahmouch L, Press MF: **Estrogens, progestogens, normal breast cell proliferation, and breast cancer risk.** *Epidemiol Rev* 1993, **15**:17-35.
5. He C, Kraft P, Chen C, Buring JE, Pare G, Hankinson SE, Chanock SJ, Ridker PM, Hunter DJ, Chasman DI: **Genome-wide association studies identify loci associated with age at menarche and age at natural menopause.** *Nat Genet* 2009, **41**:724-728.
6. Ong KK, Elks CE, Li S, Zhao JH, Luan J, Andersen LB, Bingham SA, Brage S, Smith GD, Ekelund U, Gillson CJ, Glaser B, Golding J, Hardy R, Khaw KT, Kuh D, Luben R, Marcus M, McGeehin MA, Ness AR, Northstone K, Ring SM, Rubin C, Sims MA, Song K, Strachan DP, Vollenweider P, Waeber G, Waterworth DM, Wong A, et al: **Genetic variation in LIN28B is associated with the timing of puberty.** *Nat Genet* 2009, **41**:729-733.
7. Perry JR, Stolk L, Franceschini N, Lunetta KL, Zhai G, McArdle PF, Smith AV, Aspelund T, Bandinelli S, Boerwinkle E, Cherkas L, Eiriksdottir G, Estrada K, Ferrucci L, Folsom AR, Garcia M, Gudnason V, Hofman A, Karasik D, Kiel DP, Launer LJ, van Meurs J, Nalls MA, Rivadeneira F, Shuldiner AR, Singleton A, Soranzo N, Tanaka T, Visser JA, Weedon MN, et al: **Meta-analysis of genome-wide association data identifies two loci influencing age at menarche.** *Nat Genet* 2009, **41**:648-650.
8. Sulem P, Gudbjartsson DF, Rafnar T, Holm H, Olafsdottir EJ, Olafsdottir GH, Jonsson T, Alexandersen P, Feenstra B, Boyd HA, Aben KK, Verbeek AL, Roeleveld N, Jonasdottir A, Styrkarsdottir U, Steinthorsdottir V, Karason A, Stacey SN, Gudmundsson J, Jakobsdottir M, Thorleifsson G, Hardarson G, Gulcher J, Kong A, Kiemenev LA, Melbye M, Christiansen C, Tryggvadottir L, Thorsteinsdottir U, Stefansson K: **Genome-wide association study identifies sequence variants on 6q21 associated with age at menarche.** *Nat Genet* 2009, **41**:734-738.
9. Stolk L, Zhai G, van Meurs JB, Verbiest MM, Visser JA, Estrada K, Rivadeneira F, Williams FM, Cherkas L, Deloukas P, Soranzo N, de Keyser JJ, Pop VJ, Lips P, Lebrun CE, van der Schouw YT, Grobbee DE, Witteman J, Hofman A, Pols HA, Laven JS, Spector TD, Uitterlinden AG: **Loci at chromosomes 13, 19 and 20 influence age at natural menopause.** *Nat Genet* 2009, **41**:645-647.
10. Elks CE, Perry JR, Sulem P, Chasman DI, Franceschini N, He C, Lunetta KL, Visser JA, Byrne EM, Cousminer DL, Gudbjartsson DF, Esko T, Feenstra B, Hottenga JJ, Koller DL, Kutalik Z, Lin P, Mangino M, Marongiu M, McArdle PF, Smith AV, Stolk L, van Wingerden SH, Zhao JH, Albrecht E, Corre T, Ingelsson E, Hayward C, Magnusson PK, Smith EN, et al: **Thirty new loci for age at menarche identified by a meta-analysis of genome-wide association studies.** *Nat Genet* 2010, **42**:1077-1085.
11. Stolk L, Perry JR, Chasman DI, He C, Mangino M, Sulem P, Barbalic M, Broer L, Byrne EM, Ernst F, Esko T, Franceschini N, Gudbjartsson DF, Hottenga JJ, Kraft P, McArdle PF, Porcu E, Shin SY, Smith AV, van Wingerden S, Zhai G, Zhuang WW, Albrecht E, Alizadeh BZ, Aspelund T, Bandinelli S, Lauc LB, Beckmann JS, Boban M, Boerwinkle E, et al: **Meta-analyses identify 13 loci associated with age at menopause and highlight DNA repair and immune pathways.** *Nat Genet* 2012, **44**:260-268.
12. Althuis MD, Fergenbaum JH, Garcia-Closas M, Brinton LA, Madigan MP, Sherman ME: **Etiology of hormone receptor-defined breast cancer: a systematic review of the literature.** *Cancer Epidemiol Biomarkers Prev* 2004, **13**:1558-1568.
13. Kotsopoulos J, Chen WY, Gates MA, Tworoger SS, Hankinson SE, Rosner BA: **Risk factors for ductal and lobular breast cancer: results from the nurses' health study.** *Breast Cancer Res* 2010, **12**:R106.
14. Li CI, Malone KE, Daling JR, Potter JD, Bernstein L, Marchbanks PA, Strom BL, Simon MS, Press MF, Ursin G, Burkman RT, Folger SG, Norman S, McDonald JA, Spirtas R: **Timing of menarche and first full-term birth in relation to breast cancer risk.** *Am J Epidemiol* 2008, **167**:230-239.
15. Ma H, Bernstein L, Pike MC, Ursin G: **Reproductive factors and breast cancer risk according to joint estrogen and progesterone receptor status: a meta-analysis of epidemiological studies.** *Breast Cancer Res* 2006, **8**:R43.
16. Reeves GK, Pirie K, Green J, Bull D, Beral V: **Reproductive factors and specific histological types of breast cancer: prospective study and meta-analysis.** *Br J Cancer* 2009, **100**:538-544.
17. Thomas G, Jacobs KB, Kraft P, Yeager M, Wacholder S, Cox DG, Hankinson SE, Hutchinson A, Wang Z, Yu K, Chatterjee N, Garcia-Closas M, Gonzalez-Bosquet J, Prokunina-Olsson L, Orr N, Willett WC, Colditz GA, Ziegler RG, Berg CD, Buys SS, McCarty CA, Feigelson HS, Calle EE, Thun MJ, Diver R, Prentice R, Jackson R, Kooperberg C, Chlebowski R, Lissowska J, et al: **A multistage genome-wide association study in breast cancer identifies two new risk alleles at 1p11.2 and 14q24.1 (RAD51L1).** *Nat Genet* 2009, **41**:579-584.
18. Pharoah PD, Antoniou AC, Easton DF, Ponder BA: **Polygenes, risk prediction, and targeted prevention of breast cancer.** *N Engl J Med* 2008, **358**:2796-2803.
19. Wacholder S, Hartge P, Prentice R, Garcia-Closas M, Feigelson HS, Diver WR, Thun MJ, Cox DG, Hankinson SE, Kraft P, Rosner B, Berg CD, Brinton LA, Lissowska J, Sherman ME, Chlebowski R, Kooperberg C, Jackson RD, Buckman DW, Hui P, Pfeiffer R, Jacobs KB, Thomas GD, Hoover RN, Gail MH, Chanock SJ, Hunter DJ: **Performance of common genetic variants in breast-cancer risk models.** *N Engl J Med* 2010, **362**:986-993.
20. Higgins JP, Thompson SG: **Quantifying heterogeneity in a meta-analysis.** *Stat Med* 2002, **21**:1539-1558.
21. Cox A, Dunning AM, Garcia-Closas M, Balasubramanian S, Reed MW, Pooley KA, Scollen S, Baynes C, Ponder BA, Chanock S, Lissowska J, Brinton L, Peplonska B, Southey MC, Hopper JL, McCredie MR, Giles GG, Fletcher O, Johnson N, dos Santos Silva I, Gibson L, Bojesen SE, Nordestgaard BG, Axelsson CK, Torres D, Hamann U, Justenhoven C, Brauch H, Chang-Claude J, Kropp S, et al: **A common coding variant in CASP8 is associated with breast cancer risk.** *Nat Genet* 2007, **39**:352-358.
22. Easton DF, Pooley KA, Dunning AM, Pharoah PD, Thompson D, Ballinger DG, Struwing JP, Morrison J, Field H, Luben R, Wareham N, Ahmed S, Healey CS, Bowman R, Meyer KB, Haiman CA, Kolonel LK, Henderson BE, Le Marchand L, Brennan P, Sangrajrang S, Gaborieau V, Odefrey F, Shen CY, Wu PE, Wang HC, Eccles D, Evans DG, Peto J, Fletcher O, et al: **Genome-wide association study identifies novel breast cancer susceptibility loci.** *Nature* 2007, **447**:1087-1093.
23. Stacey SN, Manolescu A, Sulem P, Rafnar T, Gudmundsson J, Gudjonsson SA, Masson G, Jakobsdottir M, Thorlacius S, Helgason A, Aben KK, Strobbe LJ, Albers-Akkers MT, Swinkels DW, Henderson BE, Kolonel LN, Le Marchand L, Millastre E, Andres R, Godino J, Garcia-Prats MD, Polo E, Tres A, Mouy M, Saemundsdottir J, Backman VM, Gudmundsson L, Kristjansson K, Bergthorsson JT, Kostic J, et al: **Common variants on chromosomes 2q35 and 16q12 confer susceptibility to estrogen receptor-positive breast cancer.** *Nat Genet* 2007, **39**:865-869.
24. Hunter DJ, Kraft P, Jacobs KB, Cox DG, Yeager M, Hankinson SE, Wacholder S, Wang Z, Welch R, Hutchinson A, Wang J, Yu K, Chatterjee N, Orr N, Willett WC, Colditz GA, Ziegler RG, Berg CD, Buys SS, McCarty CA, Feigelson HS, Calle EE, Thun MJ, Hayes RB, Tucker M, Gerhard DS, Fraumeni JF Jr, Hoover RN, Thomas G, Chanock SJ: **A genome-wide association study identifies alleles in FGFR2 associated with risk of sporadic postmenopausal breast cancer.** *Nat Genet* 2007, **39**:870-874.
25. Stacey SN, Manolescu A, Sulem P, Thorlacius S, Gudjonsson SA, Jonsson GF, Jakobsdottir M, Bergthorsson JT, Gudmundsson J, Aben KK, Strobbe LJ, Swinkels DW, van Engelenburg KC, Henderson BE, Kolonel LN, Le Marchand L, Millastre E, Andres R, Saez B, Lambea J, Godino J, Polo E, Tres A, Picelli S, Rantala J, Margolin S, Jonsson T, Sigurdsson H, Jonsdottir T, Hrafnkelsson J, et al: **Common variants on chromosome 5p12 confer susceptibility to estrogen receptor-positive breast cancer.** *Nat Genet* 2008, **40**:703-706.
26. Reeves GK, Travis RC, Green J, Bull D, Tipper S, Baker K, Beral V, Peto R, Bell J, Zelenika D, Lathrop M: **Incidence of breast cancer and its subtypes in relation to individual and multiple low-penetrance genetic susceptibility loci.** *JAMA* 2010, **304**:426-434.

27. Travis RC, Reeves GK, Green J, Bull D, Tipper SJ, Baker K, Beral V, Peto R, Bell J, Zelenika D, Lathrop M: **Gene-environment interactions in 7610 women with breast cancer: prospective evidence from the Million Women Study.** *Lancet* 2010, **375**:2143-2151.
28. Clavel-Chapelon F: **Differential effects of reproductive factors on the risk of pre- and postmenopausal breast cancer. Results from a large cohort of French women.** *Br J Cancer* 2002, **86**:723-727.
29. Yang XR, Chang-Claude J, Goode EL, Couch FJ, Nevanlinna H, Milne RL, Gaudet M, Schmidt MK, Broeks A, Cox A, Fasching PA, Hein R, Spurdle AB, Blows F, Driver K, Flesch-Janys D, Heinz J, Sinn P, Vrieling A, Heikkinen T, Aittomaki K, Heikkila P, Blomqvist C, Lissowska J, Peplonska B, Chanock S, Figueroa J, Brinton L, Hall P, Czene K, *et al*: **Associations of breast cancer risk factors with tumor subtypes: a pooled analysis from the Breast Cancer Association Consortium studies.** *J Natl Cancer Inst* 2011, **103**:250-263.
30. Phipps AI, Chlebowski RT, Prentice R, McTiernan A, Wactawski-Wende J, Kuller LH, Adams-Campbell LL, Lane D, Stefanick ML, Vitolins M, Kabat GC, Rohan TE, Li CI: **Reproductive history and oral contraceptive use in relation to risk of triple-negative breast cancer.** *J Natl Cancer Inst* 2011, **103**:470-477.
31. Allred DC, Brown P, Medina D: **The origins of estrogen receptor alpha-positive and estrogen receptor alpha-negative human breast cancer.** *Breast Cancer Res* 2004, **6**:240-245.
32. Chen F, Wilkens LR, Monroe KR, Stram DO, Kolonel LN, Henderson BE, Le Marchand L, Haiman CA: **No association of risk variants for diabetes and obesity with breast cancer: the Multiethnic Cohort and PAGE studies.** *Cancer Epidemiol Biomarkers Prev* 2011, **20**:1039-1042.

doi:10.1186/bcr3155

Cite this article as: He *et al.*: Reproductive aging-associated common genetic variants and the risk of breast cancer. *Breast Cancer Research* 2012 **14**:R54.

**Submit your next manuscript to BioMed Central
and take full advantage of:**

- Convenient online submission
- Thorough peer review
- No space constraints or color figure charges
- Immediate publication on acceptance
- Inclusion in PubMed, CAS, Scopus and Google Scholar
- Research which is freely available for redistribution

Submit your manuscript at
www.biomedcentral.com/submit

