



Using New Satellite Based Exposure Methods to Study the Association between Pregnancy PM_{2.5} Exposure, Premature Birth and Birth Weight in Massachusetts

Citation

Kloog, Itai, Steven J Melly, William L Ridgway, Brent A Coull, and Joel Schwartz. 2012. Using new satellite based exposure methods to study the association between pregnancy pm_{2.5} exposure, premature birth and birth weight in massachusetts. Environmental Health 11: 40.

Published Version

doi:10.1186/1476-069X-11-40

Permanent link

<http://nrs.harvard.edu/urn-3:HUL.InstRepos:10521831>

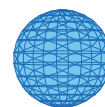
Terms of Use

This article was downloaded from Harvard University's DASH repository, and is made available under the terms and conditions applicable to Other Posted Material, as set forth at <http://nrs.harvard.edu/urn-3:HUL.InstRepos:dash.current.terms-of-use#LAA>

Share Your Story

The Harvard community has made this article openly available. Please share how this access benefits you. [Submit a story](#).

[Accessibility](#)



RESEARCH

Open Access

Using new satellite based exposure methods to study the association between pregnancy pm_{2.5} exposure, premature birth and birth weight in Massachusetts

Itai Kloog^{1*}, Steven J Melly¹, William L Ridgway², Brent A Coull³ and Joel Schwartz¹

Abstract

Background: Adverse birth outcomes such as low birth weight and premature birth have been previously linked with exposure to ambient air pollution. Most studies relied on a limited number of monitors in the region of interest, which can introduce exposure error or restrict the analysis to persons living near a monitor, which reduces sample size and generalizability and may create selection bias.

Methods: We evaluated the relationship between premature birth and birth weight with exposure to ambient particulate matter (PM_{2.5}) levels during pregnancy in Massachusetts for a 9-year period (2000–2008). Building on a novel method we developed for predicting daily PM_{2.5} at the spatial resolution of a 10x10km grid across New-England, we estimated the average exposure during 30 and 90 days prior to birth as well as the full pregnancy period for each mother. We used linear and logistic mixed models to estimate the association between PM_{2.5} exposure and birth weight (among full term births) and PM_{2.5} exposure and preterm birth adjusting for infant sex, maternal age, maternal race, mean income, maternal education level, prenatal care, gestational age, maternal smoking, percent of open space near mothers residence, average traffic density and mothers health.

Results: Birth weight was negatively associated with PM_{2.5} across all tested periods. For example, a 10 µg/m³ increase of PM_{2.5} exposure during the entire pregnancy was significantly associated with a decrease of 13.80 g [95% confidence interval (CI) = -21.10, -6.05] in birth weight after controlling for other factors, including traffic exposure. The odds ratio for a premature birth was 1.06 (95% confidence interval (CI) = 1.01–1.13) for each 10 µg/m³ increase of PM_{2.5} exposure during the entire pregnancy period.

Conclusions: The presented study suggests that exposure to PM_{2.5} during the last month of pregnancy contributes to risks for lower birth weight and preterm birth in infants.

Keywords: Air pollution, Birth weight, Preterm birth, Aerosol optical depth, Epidemiology, PM_{2.5}

Background

Recent epidemiological studies have established the association between maternal exposure to air pollution and adverse pregnancy outcomes [1-10]. The studies have shown that exposure to air pollution may elevate the risk of adverse birth outcomes, including infant death [11], low

birth weight (LBW) [4,12,13], preterm delivery [8], and small body size for gestational age [14].

Low or reduced birth weight (LBW) is an important predictor of children's health and is associated with higher risk of infant and childhood mortality [15] and coronary heart disease [16]. Preterm birth (PTB) is an indicator of prenatal disturbances of the placenta and of fetal development. Like LBW, prematurity is an important predictor of infant mortality, childhood morbidity, and possibly adult morbidity [8].

* Correspondence: ekloog@hsph.harvard.edu

¹Department of Environmental Health - Exposure, Epidemiology and Risk Program, Harvard School of Public Health, Landmark Center 401 Park Dr West, Boston, MA 02215, USA

Full list of author information is available at the end of the article

Interpretations of studies are complicated since LBW (birth weight smaller than 2500 g) represents a heterogeneous group of outcomes with different pathogenic mechanisms. Some infants have LBW as a result of PTB (less than 37 completed weeks of gestation at delivery), while others are a result of intrauterine growth restriction-IUGR (birth weight less than that expected for a given gestational age). Some maternal prenatal determinants may be associated with an increased risk of LBW through effects on the length of gestation alone (e.g., premature rupture of the membranes, placenta abruption), others through effects on intrauterine fetal growth alone (e.g., maternal weight gain, hypertension), and some possibly through effects on both PTB and IUGR (e.g., maternal cigarette smoking). Where air pollution falls in this spectrum is not fully resolved.

Previous studies examining the association of LBW/PTB and $PM_{2.5}$ have typically used available monitors in the study area. $PM_{2.5}$ concentrations vary spatially within the study domain and thus using only available monitors introduces exposure error and likely biases the effect estimates downward [17]. Furthermore, lack of spatially resolved daily $PM_{2.5}$ concentration data restricts these studies to populations surrounding monitoring sites, which may not be representative of the population as a whole. Land use regressions provide estimates of geographically resolved exposures at individual residences, but are usually not temporally resolved enough [18,19] to look at effects of exposures in the last 30 days of pregnancy, when a substantial weight gain occurs.

We developed a method to predict daily temporally and spatially resolved $PM_{2.5}$ across New-England for the years 2000–2008 [20,21]. These predictions, which are based on land use regression plus a daily calibration of $PM_{2.5}$ ground measurements and MODIS (Moderate Resolution Imaging Spectroradiometer) satellite aerosol optical depth (AOD), allow us to predict daily $PM_{2.5}$ concentration levels at the resolution of a 10x10 km spatial grid. Recently, this model has been slightly updated to include nested regions in the yearly models and weights to account for non-random missingness in AOD. The new “out of sample” R^2 of the prediction model is 0.85. Importantly, this R^2 is for daily observations, rather than monthly or yearly values. By averaging our estimated daily exposures at each location we can generate long term exposures. This enables us to study both the short term and long term effects of ambient particles, respectively.

In the presented study, we make use of these new $PM_{2.5}$ prediction data to study the association between long (exposure during the whole birth period and last trimester) and short term $PM_{2.5}$ exposure (exposure during the last month of pregnancy) and birth weight and premature birth in eastern Massachusetts between the years 2000–2008. The resulting analyses include birth weight outcomes from

all births in the study region regardless of how close each participant lives to a $PM_{2.5}$ monitor.

Methods

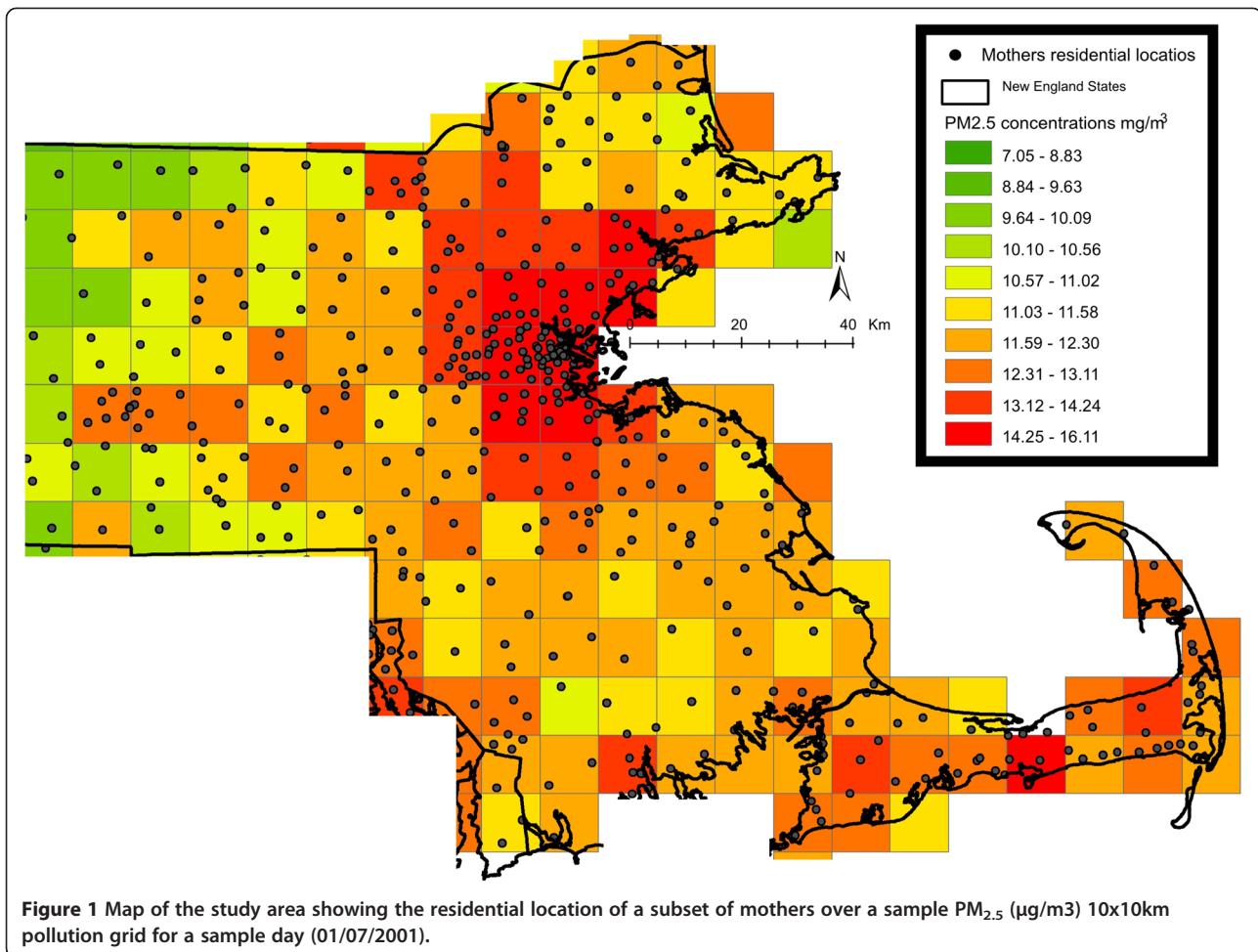
Study domain and population

The spatial domain of our study included the state of Massachusetts (Figure 1). The study population included all singleton live births in Massachusetts from the Massachusetts Birth Registry for the period of January 1, 2000 to December 31, 2008. The residential address of each mother at time of birth was geocoded by a private firm – TeleAtlas, an industry leading geocoding company commonly used in academic studies [22]. In addition, we manually checked a random sample of geocoded addresses for accuracy by using ESRI ArcGIS® software StreetMap data [23]. Geocoding was done by matching the street address, city, state, and ZIP code to street network data derived from US census bureau TIGER (Topologically Integrated Geographic Encoding and Referencing system) dataset [24], and assigning to this street address latitude and longitude coordinates. The study and the use of birth data was approved by the Massachusetts Department of Public Health and the human subjects committee of the Harvard School of Public Health. The analysis was restricted to singleton births, and there were 634,244 such births in the study. The number of infants with gestational age of 37 weeks or greater was 572,272.

Exposure data

For exposure data we used two different indicators: predicted 10 x 10 km $PM_{2.5}$ and residence-specific cumulative traffic density. We describe each metric in more detail below.

PM_{2.5} exposure - $PM_{2.5}$ exposure data were generated by the previously mentioned $PM_{2.5}$ prediction model [20]. In these prediction models we used mixed models with random slopes for day to calibrate satellite AOD data at the resolution of a 10x10 km spatial grid (2000–2008) across New England with monitored $PM_{2.5}$ measurements. We then used a generalized additive mixed model with spatial smoothing to estimate $PM_{2.5}$ in location-day pairs with missing AOD, using regional measured $PM_{2.5}$, AOD values in neighboring cells, and land use. “Out-of-sample” ten-fold cross-validation was used to quantify the accuracy of our predictions. For days with available AOD data we found high “out-of-sample” R^2 (mean “out-of-sample” $R^2 = 0.87$). For days without AOD values, our model performance was also excellent (mean “out-of-sample” $R^2 = 0.85$). To estimate $PM_{2.5}$ exposure, each mother’s residence at the time of delivery was linked to one 10x10km grid point (see Figure 1). Exposure was calculated by averaging daily $PM_{2.5}$ concentrations over the 30 days prior to the delivery date, 90 days prior to the delivery date and the full pregnancy period.



Cumulative traffic density- Local traffic emissions are a small part of total PM_{2.5} in Boston (for example in our Massachusetts data, black carbon consists of only 10% of total PM). This allows us to separately consider traffic pollution and PM_{2.5}. Road data were obtained from the Massachusetts department of transportation (MassDOT), which conducts traffic counts on selected roads and provided estimates of 2002 traffic on other roads. This dataset included average daily traffic (ADT) as an attribute. The data included automatic and estimated counts based on periodic counts on all other major roads. A 200 m by 200 m grid was carefully constructed to allow 100 m buffers around each grid center point without overlap. These buffers covered the seven counties as previously done in several studies [10]. Normalized cumulative ADT (CADT) was calculated for all road segments within 100 meters around each grid point as: $CADT = \sum (ADT * \text{road segment length})$, and that value was assigned to the respective grid point. Birth addresses were then assigned an average of the estimates of the four grid points around it, using bilinear interpolation.

Covariates

Covariates were chosen based on previous literature on the potential risk factors associated with low birth weight [9,10] and include both individual and contextual covariates:

Land use for recreation and conservation- Land use for recreation and conservation (open space) was downloaded from the office of geographic information Commonwealth of Massachusetts, information technology division MassGIS [25]. The subset of the open space designated for recreation and conservation was intersected with 2000 Census tract boundaries (also downloaded from MassGIS) using ArcGIS[®] 9.3. The percent of each census tract that was open space was then calculated and assigned to birth addresses belonging to that tract.

Socioeconomic indicators- Individual level variables were obtained from the birth registry. Such information included the mother's race, mother's years of education, and the Kotelchuck index of adequacy of prenatal care utilization (APNCU). APNCU is based on the number and the time of start of mother's prenatal visits [26] was recorded into: inadequate (<50 percent of expected

visits used); intermediate (50–79 percent); appropriate (80–109 percent); and appropriate plus (≥ 110 percent).

Education of the mother was categorized as: no high school (≤ 12 years of educational attainment), some high school (≤ 12 years of educational attainment); some college (13–15 years); and college or postgraduate (≥ 16 years).

Median income- We obtained data from the United States Census Bureau of 2000 on median household income [27] for each census tract in the study area, and assigned these to births whose address belonged to that tract.

Additionally, individual-level covariates maternal age, gestational age, amount of cigarettes smoked during and before pregnancy, chronic conditions of mother or conditions of pregnancy (lung disease, hypertension, gestational diabetes and non-gestational diabetes), previous occurrence of a preterm birth, whether the mother ever had a previous infant weighing 4000 grams or more and gender of infant were all obtained through the Massachusetts Birth Registry.

Statistical methods

To identify and measure the significance of factors affecting birth weight two models were performed: a linear mixed regression models using birth weight (among full term births) as the outcome and a logistic mixed regression models using pre term/full term birth as the outcome [9,28]. All modeling was done in R statistical software. Predictors included mean $PM_{2.5}$ exposure prior to delivery (30, 90 and 270 days prior to the delivery date), cigarette use previous to pregnancy, cigarette use during pregnancy, median income, APNCU, cumulative traffic density, percent of open spaces, age of mother, gestational age, chronic conditions of mother or conditions of pregnancy (lung disease, hypertension, gestational diabetes or non-gestational diabetes), previous preterm births, previous infant weighting 4000 grams and gender of infant. A random intercept for census tract was used to capture unmeasured similarities in persons in the same neighborhood.

Specifically we fit the models:

$$BW_{ij} = (\alpha + u_j) + \beta_1 PM_i + \beta_2 X_{2i} + \beta_3 X_{3i} \dots + e_{ij}(u_j) \sim N[0, \sigma_u^2], (\text{model 1})$$

$$\text{Logit}(Pr BW_{ij} = 1|X) = (\alpha + u_j) + \beta_1 PM_i + \beta_2 X_{2i} + \beta_3 X_{3i} \dots + e_{ij}(u_j) \sim N[0, \sigma_u^2], (\text{model 2})$$

where BW_{ij} (or $\text{Logit}(Pr BW_{ij} = 1|X)$) is the response (birth weight or full/pre term) for the i th subject in census tract j , α and u_j are the fixed and random (tract specific) intercepts, respectively, PM_i , X_{1i} , etc. denote the set of covariates of interest used in the model, e_{ij} is the error term and finally, σ_u^2 is the variance of the tract random effects, and $e_{ij} \sim N[0, \sigma_e^2]$. During the analysis,

multicollinearity and normality were evaluated, and no issues were uncovered (tolerance > 0.4).

Results

Descriptive statistics are presented in Table 1. Of the 634,844 live full term births included in our analyses, 49.36% of the births were male, 71.70% were white, only 7.50% had maternal age below 20 and 21.16% of the mothers had more than 15 years of education.

Table 2 contains a summary of the predicted exposures across all grid cells in the analysis. Table 3 presents the results from both the logistic mixed model regressions for all exposure periods and the regression model for all exposure periods. In the linear mixed model analyses a $10 \mu\text{g}/\text{m}^3$ increase of $PM_{2.5}$ exposure during the last 30 days prior to delivery was associated with a decrease of 8.80 g [95% confidence interval (CI) = -10.32, -4.44] in birth weight. A $10 \mu\text{g}/\text{m}^3$ increase of $PM_{2.5}$ exposure during the last 90 days prior to delivery was associated with a decrease of 9.20 g [95% confidence interval (CI) = -15.00, -3.30] in birth weight. Finally, a $10 \mu\text{g}/\text{m}^3$ increase of $PM_{2.5}$ exposure during the entire pregnancy was associated with a decrease of 13.80 g [95% confidence interval (CI) = -21.10, -6.04] in birth weight.

The odds ratio for a premature birth was 1.06 [95% confidence interval (CI) = 1.01–1.13] for each $10 \mu\text{g}/\text{m}^3$ increase of $PM_{2.5}$ exposure during the full pregnancy. Other exposure periods were non-significant.

In addition, all other covariates acted as expected (see Appendix 1). For example cigarette use both pre pregnancy and during pregnancy also decrease birth weight significantly (Beta = -17.30, CI = -17.95, -16.65 per cigarette per day smoked during pregnancy and Beta = -1.45 g, CI = -1.79, -1.11 per cigarettes per day for smoking pre pregnancy) (see Appendix 1). These results are for the full birth $PM_{2.5}$ model but were essentially identical across all 3 averaging times.

Discussion

We examined the effects of $PM_{2.5}$ exposure on birth outcomes in a study of singleton births in seven Massachusetts counties between 2000 and 2008. Using a model based on satellite remote sensing we were able to assign exposure to all subjects, regardless of the distance between a participant's residence and the closest $PM_{2.5}$ monitor. We found a consistent effect of exposure to $PM_{2.5}$ on birth weight for infants who were born full term, and an elevated risk of preterm delivery after adjusting for other potential risk factors such as previous and current mother's health conditions, socioeconomic factors and physical environment risk factors. Importantly, this association remained after controlling for traffic density within 100 meters of the residence and open space. Combined with the fact that the satellite grid is too coarse to capture local effects of high traffic on a nearby road, this suggests that the $PM_{2.5}$ results

Table 1 Descriptive statistics: Live births in eastern Massachusetts, 2000–2008

Characteristic	All births (% Total)	Mean Birth Weight (Grams)	SD
Sex			
Male	49.36	3262.38	616.86
Female	51.14	3379.14	648.75
Race			
White	71.70	3368.2	627.35
African-American	7.99	3165.04	688.52
Hispanic	20.31	3220.94	623.57
Education (years)			
≤ 8	2.68	3253.04	597.64
>8-12	33.53	3259.15	635.04
13-15	42.62	3333.61	637.41
≥15	21.16	3375.29	621.90
Age of mother			
≤ 20	7.50	3192.03	612.17
20-29	34.72	3299.77	617.60
30-34	32.11	3359.42	634.44
35-39	20.41	3356.59	654.62
>39	5.26	3292.81	692.11

we report here are due predominantly to non-primary traffic particles, and that the traffic density variable captures the additional impact of traffic pollution. In Massachusetts during these years, such non primary particle exposures were mostly sulfates, from coal burning power plants, and transported secondary organic aerosols, which are generated from a variety of sources including traffic in upwind locations.

A key feature of the presented study compared to previous epidemiologic studies showing associations between air pollution and birth weight [10,29,30] is the exposure assignment. Since our model allows us to predict temporally and spatially resolved PM_{2.5} we can assign daily PM_{2.5} exposure to the entire study population, avoiding selection bias that would yield a non-representative sample. In addition we account for small area measures of potential confounders at a 10x10km spatial resolution, thus minimizing exposure error.

Knowledge of the exact impact of PM_{2.5} on birth weight and its determinants is still very limited. Fine particulate matter may affect birth weight through direct or indirect means. Some studies have shown that PM_{2.5} is associated with a number of cardiovascular and respiratory related outcomes both in adults and children [31-33]. Maternal

exposure to PM_{2.5} during pregnancy could indirectly affect fetal health by adversely affecting the health of the mother. Since PM_{2.5} has been associated with arterial narrowing [34,35], increased blood pressure[36-39], and impaired endothelial function[40], this exposure may impair the ability of the mother to deliver nutrients to the fetus. Alternatively, fine particles could directly affect the health of the infant, as fine particles are a mixture of different substances, many of the them toxic, such as metals, and can also have toxic organic matter, such as polycyclic aromatic hydrocarbons absorbed on their surface [41].

Our results are in agreement with the previous studies which analyzed the effect of exposure to PM_{2.5} [10,29] and add weight to the conclusion that air pollutants negatively impact fetal development.

A major limitation of the present study is the spatial resolution of 10X10 km. While estimation conducted at a finer spatial resolution is preferable, PM_{2.5} is relatively homogeneous spatially [42], and so cells of this size probably capture most of the spatial variability in exposure to PM_{2.5}, with the local traffic contribution captured by that separate covariate. Moreover this coarse resolution, combined with our use of a local traffic exposure variable allow us to focus on the effects of regional pollutants in this

Table 2 Descriptive statistics for PM_{2.5} exposure, Massachusetts, 2000–2002

Covariate	Mean	Median	SD	Range	IQR	Q1	Q3	Days of data available
PM _{2.5} exposure (µg/m ³)	9.6	8.4	5.1	159.7	5.3	6.3	11.6	3285
Cumulative traffic density (density*length)	1309	702	2076	36188	1352	258	1611	3285

Note: Q1 and Q3 are quartiles.

Table 3 Odds ratio for premature births and change in birth weight for full term births for each 10 µg/m³ increment in PM_{2.5} for various exposure periods

Exposure	Birth weight Change (in grams) (95% CI)	OR (95% CI)
Last month (30 days prior to birth)	-8.80 ^{***} (-10.32 to -4.44)	1.00 (0.96 to 1.04)
Last trimester (90 days prior to birth)	-9.20 ^{***} (-15.00 to -3.30)	0.99 (0.94 to 1.03)
Entire birth period	-13.80 ^{***} (-21.10 to -6.05)	1.06 ^{***} (1.01 to 1.13)

Note: *** indicates a 0.01 significance level.

study. Another limitation of using a fixed 10x10km grid is the Modifiable areal unit problem (MAUP) which refers to the problem of information loss due to data aggregation [43], although MAUP is especially acute when observations are represented by simple point data [44] which is not the case in our study. It also should be noted that the study only used outdoor exposure concentrations, which may differ from indoor concentration and personal exposure but such data was unavailable.

As satellite remote sensing evolves and progresses, higher spatial resolution data (e.g 3x3km and 1x1 km) should become available in the next two years, which will further reduce exposure error. Such increased resolution should enable us to more precisely estimate daily exposures and how these vary across spatial locations.

Conclusions

In summary, the presented study suggests that exposure to PM_{2.5} during pregnancy contributes to the risk of preterm birth and lower birth weight in infants.

Appendix 1

Factors affecting birth weight for all singleton live births in Eastern Massachusetts between 2000–2008.

Model Covariates	Birth Weight	Changes in grams (CI 95% Low-95% Hi)	Premature birth	OR (CI 95% Low-95% Hi)
PM _{2.5} exposure for entire birth period	-1.38	(-2.11;0.65)	1.01	(0.29;0.40)
Normalized cumulative traffic density (density*length)	-0.04	(-0.09;0.02)	1.00	(1.00;1.01)
Maternal Age (yr)	7.82	(7.38;8.27)	0.99	(0.99;1.00)
Maternal Age ²	-0.21	(-0.24;-0.19)	1.00	(0.98;0.99)
Cigarettes per day during Pregnancy	-17.30	(-17.95;-16.65)	1.02	(1.00;1.01)
Cigarettes per day before Pregnancy	-1.45	(-1.79;-1.11)	1.00	(1.02;1.03)
Median Household Income in tract (\$10,000)	1.58	(0.53;2.64)	0.99	(0.99;1.00)
Percent of Open Spaces	0.39	(0.2;0.58)	1.00	(0.99;1.00)
Gender of infant (males vs females)	-129.93	(-132.3;-127.55)	0.85	(0.83;0.86)
Previous birth of infant ? 4000 grams	477.78	(463.82;491.74)	0.46	(0.39;0.55)
Gestational diabetes	49.42	(42.86;55.98)	1.33	(1.27;1.41)
Hypertension	-91.30	(-98.29;-84.3)	1.94	(1.84;2.04)
Lung disease	-30.01	(-36.91;-23.12)	1.25	(1.18;1.32)

Competing interests

The authors declare that they have no competing interests.

Acknowledgments

Supported by the Harvard Environmental Protection Agency (EPA) Center Grants R-832416, and R83479801, NIH grants ES00002 and ES012044, and the Environment and Health Fund (EHF) Israel.

Author details

¹Department of Environmental Health - Exposure, Epidemiology and Risk Program, Harvard School of Public Health, Landmark Center 401 Park Dr West, Boston, MA 02215, USA. ²Science Systems and Applications, Inc, 10210 Greenbelt Road, Suite 600, Lanham, MD 20771, USA. ³Department of Biostatistics, Harvard School of Public Health, Boston, MA 02215, USA.

Authors' contributions

IK was the principal investigator responsible for design, conduct, analysis, interpretation of data and writing the manuscript. SJM was responsible for all GIS and spatial analysis work. WLR was responsible for design, data management and analysis. BAC participated as statistician and in the compilation and interpretation of the data and JS made contributions to conception, design, analysis of data and drafting the manuscript. All authors read and approved the final manuscript.

Received: 12 December 2011 Accepted: 18 June 2012

Published: 18 June 2012

References

- Bell ML, Belanger K, Ebisu K, Gent JF, Lee HJ, Koutrakis P, Leaderer BP: Prenatal Exposure to Fine Particulate Matter and Birth Weight: Variations by Particulate Constituents and Sources. *Epidemiology* 2010, **21**:884–891. 810.1097/EDE.1090b1013e3181f1092f1405.
- Dejmek J, Selevan S, Benes I, Solanský I, Srám R: Fetal growth and maternal exposure to particulate matter during pregnancy. *Environ Heal Perspect* 1999, **107**:475.

(Continued)

Non-gestational diabetes	93.18	(79.22;107.14)	1.98	(1.81;2.18)
Previous occurrence of preterm birth	-202.07	(-216.13;-188.01)	3.55	(3.31;3.8)
APNCU:				
Appropriate plus	194.26	(164.19;224.33)	0.25	(0.22;0.29)
Appropriate	160.08	(129.92;190.24)	0.31	(0.27;0.36)
Intermediate	145.86	(115.1;176.62)	0.31	(0.27;0.36)
Inadequate	147.49	(111.8;183.17)	0.45	(0.38;0.55)
None	reference			
Race:				
White	130.47	(127.02;133.93)	0.84	(0.81;0.86)
African-American	3.35	(-2.1;8.81)	1.20	(1.15;1.25)
Hispanic	reference			
Education:				
Education (reference- college or postgraduate (> 15 years)):	-8.74	(-16.88;-0.6)	1.28	(1.21;1.37)
No High school (< 8 years)	-20.11	(-23.58;-16.64)	1.21	(1.17;1.25)
High school (>8 - 12 years)	0.13	(-3.25;3.52)	1.10	(1.07;1.14)
Some college (13 - 15 years)	reference			
Year:				
2000	14.98	(9.47;20.5)	0.89	(0.85;0.93)
2001	9.42	(3.94;14.91)	0.91	(0.86;0.95)
2002	3.49	(-1.86;8.85)	0.92	(0.87;0.96)
2003	4.60	(-0.63;9.83)	0.97	(0.92;1.01)
2004	-1.59	(-6.76;3.58)	1.01	(0.96;1.05)
2005	-11.18	(-16.35;-6.01)	1.03	(0.98;1.08)
2006	-12.65	(-17.73;-7.57)	1.05	(1.01;1.09)
2007	-7.39	(-12.59;-2.18)	1.07	(1.02;1.12)
2008	reference			

- Glinianaia S, Rankin J, Bell R, Pless-Mulloli T, Howel D: **Particulate air pollution and fetal health: a systematic review of the epidemiologic evidence.** *Epidemiology* 2004, **15**:36.
- Gouveia N, Bremner S, Novaes H: **Association between ambient air pollution and birth weight in São Paulo, Brazil.** *J Epidemiol Commun Health* 2004, **58**:11.
- Ha E, Hong Y, Lee B, Woo B, Schwartz J, Christiani D: **Is air pollution a risk factor for low birth weight in Seoul?** *Epidemiology* 2001, **12**:643.
- Jedrychowski W, Bendkowska I, Flak E, Penar A, Jacek R, Kaim I, Spengler J, Camann D, Perera F: **Estimated risk for altered fetal growth resulting from exposure to fine particles during pregnancy: an epidemiologic prospective cohort study in Poland.** *Environ Heal Perspect* 2004, **112**:1398.
- Maisonet M, Bush T, Correa A, Jaakkola J: **Relation between ambient air pollution and low birth weight in the Northeastern United States.** *Environ Heal Perspect* 2001, **109**:351.
- Ritz B, Yu F, Chapa G, Fruin S: **Effect of air pollution on preterm birth among children born in Southern California between 1989 and 1993.** *Epidemiology* 2000, **11**:502.
- Zeka A, Melly S, Schwartz J: **The effects of socioeconomic status and indices of physical environment on reduced birth weight and preterm births in Eastern Massachusetts.** *Environ Heal* 2008, **7**:60.
- Zeka A, Schwartz J, Melly S: **Traffic-Related and Socioeconomic Indicators in Association With Low Birth Weight and Preterm Births in Eastern Massachusetts Between 1996 and 2002.** *Epidemiology* 2006, **17**:S105.
- Ritz B, Wilhelm M, Zhao Y: **Air pollution and infant death in southern California, 1989-2000.** *Pediatrics* 2006, **118**:493.
- Lee B, Ha E, Park H, Kim Y, Hong Y, Kim H, Lee J: **Exposure to air pollution during different gestational phases contributes to risks of low birth weight.** *Hum Reprod* 2003, **18**:638.
- Vassilev Z, Robson M, Klotz J: **Associations of polycyclic organic matter in outdoor air with decreased birth weight: a pilot cross-sectional analysis.** *J Toxicol Environ Health Part A* 2001, **64**:595-605.
- Bobak M: **Outdoor air pollution, low birth weight, and prematurity.** *Environ Health Perspect* 2000, **108**:173-176.
- McCormick M: **The contribution of low birth weight to infant mortality and childhood morbidity.** *N Engl J Med* 1985, **312**:82-90.
- Vos L, Oren A, Bots M, Gorissen W, Grobbee D, Uiterwaal C: **Birth size and coronary heart disease risk score in young adulthood. The Atherosclerosis Risk in Young Adults (ARYA) study.** *Eur J Epidemiol* 2006, **21**:33-38.
- Zeger SL, Thomas D, Dominici F, Samet JM, Schwartz J, Dockery D, Cohen A: **Exposure measurement error in time-series studies of air pollution: concepts and consequences.** *Environ Heal Perspect* 2000, **108**:419-426.
- Aguilera I, Guxens M, Garcia-Esteban R, Corbella T, Nieuwenhuijsen MJ, Foradada CM, Sunyer J: **Association between GIS-based exposure to urban air pollution during pregnancy and birth weight in the INMA Sabadell Cohort.** *Environ Heal Perspect* 2009, **117**:1322.
- Brauer M, Lencar C, Tamburic L, Koehoorn M, Demers P, Karr C: **A cohort study of traffic-related air pollution impacts on birth outcomes.** *Environ Heal Perspect* 2008, **116**:680.
- Kloog I, Koutrakis P, Coull BA, Lee HJ, Schwartz J: **Assessing temporally and spatially resolved PM_{2.5} exposures for epidemiological studies using**

- satellite aerosol optical depth measurements. *Atmos Environ* 2011, **45**:6267–6275.
21. Lee H, Liu Y, Coull B, Schwartz J, Koutrakis P: **A novel calibration approach of MODIS AOD data to predict PM 2.5 concentrations.** *Atmos Chem Phys Discuss* 2011, **11**:9769–9795.
 22. Krieger N, Waterman P, Lemieux K, Zierler S, Hogan JW: **On the wrong side of the tracts? Evaluating the accuracy of geocoding in public health research.** *Am J Public Health* 2001, **91**:1114.
 23. ESRI: **ARCGIS.** In *Book ARCGIS (Editor ed.^eds.), 9.2 edition.* City: ESRI; 2007.
 24. **TIGER: Topologically Integrated Geographic Encoding and Referencing system.** In *Book Topologically Integrated Geographic Encoding and Referencing system (Editor ed.^eds.).* City: US Census; 2006.
 25. **MassGIS-EOEA: Massachusetts Geographic Information System.** In *Book Massachusetts Geographic Information System (Editor ed.^eds.).* City: Executive Office of Environmental Affairs; 2006.
 26. Alexander G, Kotelchuck M: **Quantifying the adequacy of prenatal care: a comparison of indices.** *Publ Health Rep* 1996, **111**:408.
 27. **USCB: United States Census Bureau of 2000.** In *Book United States Census Bureau of 2000 (Editor ed.^eds.).* City: US Census Bureau; 2000.
 28. Coull BA, Schwartz J, Wand M: **Respiratory health and air pollution: additive mixed model analyses.** *Biostatistics Oxford England* 2001, **2**:337.
 29. Bell ML, Ebisu K, Belanger K: **Ambient air pollution and low birth weight in Connecticut and Massachusetts.** *Environ Heal Perspect* 2007, **115**:1118.
 30. Salam MT, Millstein J, Li YF, Lurmann FW, Margolis HG, Gilliland FD: **Birth outcomes and prenatal exposure to ozone, carbon monoxide, and particulate matter: results from the Children's Health Study.** *Environ Heal Perspect* 2005, **113**:1638.
 31. Brunekreef B, Holgate ST: **Air pollution and health.** *Lancet* 2002, **360**:1233–1242.
 32. Laden F, Neas LM, Dockery DW, Schwartz J: **Association of fine particulate matter from different sources with daily mortality in six US cities.** *Environ Heal Perspect* 2000, **108**:941.
 33. Schwartz J, Neas LM: **Fine particles are more strongly associated than coarse particles with acute respiratory health effects in schoolchildren.** *Epidemiology* 2000, **11**:6–10.
 34. Urch B, Brook JR, Wasserstein D, Brook RD, Rajagopalan S, Corey P, Silverman F: **Relative contributions of PM2.5 chemical constituents to acute arterial vasoconstriction in humans.** *Inhal Toxicol* 2004, **16**:345–352.
 35. Adar SD, Klein R, Klein BE, Szpiro AA, Cotch MF, Wong TY, O'Neill MS, Shrager S, Barr RG, Siscovick DS, *et al*: **Air Pollution and the microvasculature: a cross-sectional assessment of in vivo retinal images in the population-based multi-ethnic study of atherosclerosis (MESA).** *PLoS Med* 2010, **7**:e1000372.
 36. Brook RD: **Cardiovascular effects of air pollution.** *Clin Sci Lond* 2008, **115**:175–187.
 37. Chuang KJ, Yan YH, Chiu SY, Cheng TJ: **Long-term air pollution exposure and risk factors for cardiovascular diseases among the elderly in Taiwan.** *Occup Environ Med* 2011, **68**:64–68.
 38. Bartoli CR, Wellenius GA, Diaz EA, Lawrence J, Coull BA, Akiyama I, Lee LM, Okabe K, Verrier RL, Godleski JJ: **Mechanisms of inhaled fine particulate air pollution-induced arterial blood pressure changes.** *Environ Health Perspect* 2009, **117**:361–366.
 39. Mordukhovich I, Wilker E, MacIntosh H, Wright R, Vokonas P, Sparrow D, Schwartz J: **Black Carbon Exposure, Oxidative Stress Genes, and Blood Pressure in a Repeated Measures Study.** *Environ Health Perspect* 2009, **117**(11):1767–1772.
 40. O'Neill MS, Veves A, Zanutti A, Sarnat JA, Gold DR, Economides PA, Horton ES, Schwartz J: **Diabetes enhances vulnerability to particulate air pollution-associated impairment in vascular reactivity and endothelial function.** *Circulation* 2005, **111**:2913–2920.
 41. Dejmek J, Solanský I, Benes I, Lenicek J, Srám RJ: **The impact of polycyclic aromatic hydrocarbons and fine particles on pregnancy outcome.** *Environ Heal Perspect* 2000, **108**:1159.
 42. Liu Y, Sarnat JA, Kilaru V, Jacob DJ, Koutrakis P: **Estimating ground-level PM2.5 in the eastern United States using satellite remote sensing.** *Environ Sci Technol* 2005, **39**:3269–3278.
 43. Dark SJ, Bram D: **The modifiable areal unit problem (MAUP) in physical geography.** *Prog Phys Geogr* 2007, **31**:471.
 44. Gelfand AE, Zhu L, Carlin BP: **On the change of support problem for spatio-temporal data.** *Biostatistics* 2001, **2**:31–45.

doi:10.1186/1476-069X-11-40

Cite this article as: Kloog *et al.*: Using new satellite based exposure methods to study the association between pregnancy pm_{2.5} exposure, premature birth and birth weight in Massachusetts. *Environmental Health* 2012 **11**:40.

Submit your next manuscript to BioMed Central and take full advantage of:

- **Convenient online submission**
- **Thorough peer review**
- **No space constraints or color figure charges**
- **Immediate publication on acceptance**
- **Inclusion in PubMed, CAS, Scopus and Google Scholar**
- **Research which is freely available for redistribution**

Submit your manuscript at
www.biomedcentral.com/submit

