



# Determining object geometry with compliance and simple sensors

## Citation

Jentoft, Leif P., and Robert D. Howe. 2011. "Determining Object Geometry with Compliance and Simple Sensors." In the Proceedings of the IEEE/RSJ International Conference on Intelligent Robots and Systems, San Francisco, CA, September 25-30, 2011: 3468-3473.

## Published Version

doi:10.1109/IROS.2011.6094692

## Permanent link

<http://nrs.harvard.edu/urn-3:HUL.InstRepos:22108933>

## Terms of Use

This article was downloaded from Harvard University's DASH repository, and is made available under the terms and conditions applicable to Open Access Policy Articles, as set forth at <http://nrs.harvard.edu/urn-3:HUL.InstRepos:dash.current.terms-of-use#OAP>

## Share Your Story

The Harvard community has made this article openly available.  
Please share how this access benefits you. [Submit a story](#).

[Accessibility](#)

# Determining Object Geometry with Compliance and Simple Sensors

Leif P. Jentoft, *Student Member, IEEE*, Robert D. Howe, *Senior Member, IEEE*

**Abstract**—To determine object geometry in unstructured environments, sensors must be mechanically robust, must exert only low forces on objects during exploration, and must be able to scan large regions efficiently without risk of damaging objects or sensors. Joint-angle sensors on compliant joints provide an appealing option for this task. An algorithmic framework is presented that allows them to be used for contact detection and to determine object geometry without requiring tactile arrays or other complicated contact location sensors. This volumetric approach to using proprioceptive sensors provides improvements in accuracy over other existing approaches based on the intersection of planes and lines.

## I. INTRODUCTION

Object geometry plays an important role in planning grasps and in characterizing and classifying objects. Unstructured environments such as human dwellings pose a particular challenge because they may contain unexpected obstacles, which frequently occlude machine vision systems and pose mechanical hazards to robot hands. Additionally, they often contain a wide range of objects that do not precisely match a priori models. Tactile sensing is particularly appropriate for determining object geometry and position, especially when combined with complementary sensors such as computer vision [1]. Because they transduce mechanical parameters directly (such as surface contact and friction), tactile sensors provide essential information for mechanical tasks such as grasping.

The problem of determining object geometry from tactile sensors can be broadly divided into two parts: obtaining raw tactile data from an object, and using this data to create a model of the object. Tactile data can be acquired with a broad range of sensors. Although tactile sensors have been an active area of study for over 30 years [2], systems-level questions such as sensor size, complexity, cost, and surface geometry have limited their successful integration into robotic hands [3]. For unstructured environments, completeness of coverage and mechanical robustness are key factors to avoid breaking sensors and disturbing objects.

Regardless of the transduction technology, the raw data these sensors generate most frequently consists of contact point locations, usually with surface normals [4]–[8]. Some sensors also provide surface curvature [9], and Caselli et. al use bounding surfaces without contact location at all, though

L. P. Jentoft and R. D. Howe are with the School of Engineering and Applied Science, Harvard University, 02138 USA e-mail: howe@seas.harvard.edu

This work was supported by the National Science Foundation under Award No. IIS-0905180

Manuscript received March 28 2011



Fig. 1. Multiple exposures illustrating the use of compliant joints and joint-angle sensors to determine object geometry. Such a system is robust, inexpensive, and well-suited to the challenges of unstructured environments.

only for convex objects [5]. This raw information is used to fit object models either for the local surface [10]–[12] or for the object as a whole [6], [10], [13], [14]. Many such object fitting methods have been proposed, both by the grasp planning community and by the object classification community. Ultimately it is the application that determines which model is most appropriate—grasp planning requires accurate surface geometry, whereas classification requires differentiating features. A useful overview of object models is given in [15].

This work introduces a method to obtain raw tactile data using joint-angle sensors in compliant fingers over time. Such a sensing system is well-suited to the major challenges that exist in unstructured environments: it is mechanically robust to collision with objects and requires only basic position-based control from the supporting arm to keep contact forces low while stroking an object. The localization algorithm is a space sweeping approach that generates a discretized enveloping surface as well as contact locations. It also returns the empty space around an object, which forms a natural basis for grasp planning in cluttered environments. Objects can be concave or convex, but are assumed to be static and unmoving.

In this paper, we present a method to detect contact using compliant joints, the Space-Sweeping method to localize contacts, and experimental validation. The advantages and limitations of this approach with respect to existing work is discussed. Finally, several promising directions for future work are noted.

## II. CONTACT DETECTION WITH COMPLIANT JOINTS

To explore an unknown space with a finger, a sensor is required to detect contact with the target object and

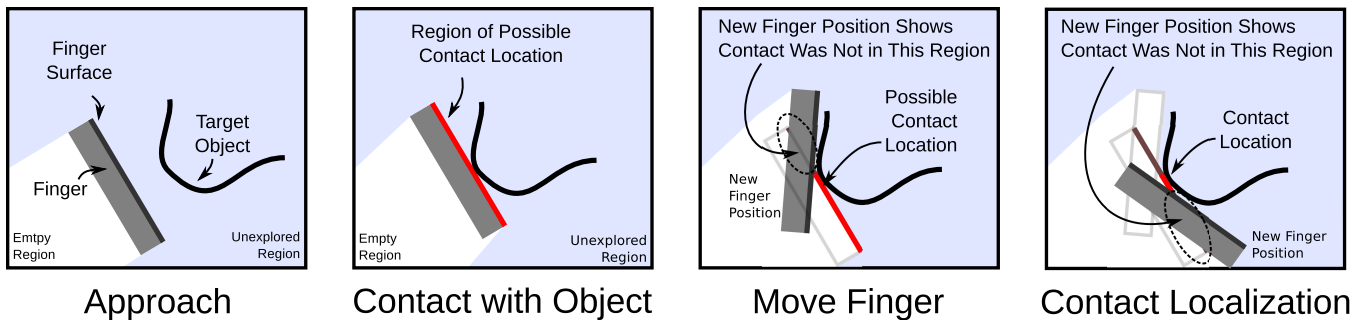


Fig. 2. Swept-Space Elimination. When contact is detected between a finger and a static object, the current finger surface defines a set of potential locations for this contact. If we assume the object is rigid and unmoving, the location of the contact cannot lie in any region that is subsequently occupied by the finger, and finger motion narrows the contact location.

environmental obstacles. Ideally, such a sensor should detect the contact without applying large forces and should not significantly restrict the process of exploration through “blind spots” or velocity limits imposed by sensor fragility.

Many different sensors have been used for this purpose, including binary switches [13], tactile arrays [11], intrinsic force/torque sensors [16], piezoelectric films [17], piezoelectric resonators [4], and whiskers [18]. Detecting contact with joint-angle sensors in compliant joints provides a number of advantages. The sensing area can be the entire finger link surface, and compliant joints do not generate high forces as a result of minor positioning changes.

The forces on such a compliant finger come from three primary sources: actuation, dynamics from the motion of the supporting hand, and contact forces with objects. The effects of actuation force and hand motion can be controlled or modeled, leaving any remaining deformation directly attributable to object contact. One method is to move the hand slowly with no finger actuation and apply a threshold to the joint deflection beyond which any deflection can be attributed to object contact. One artifact must be corrected—while the finger “snaps back” from extended deflection, the angle may still be past the threshold as the finger returns through free space. This can be corrected by a joint acceleration threshold.

When a finger thus equipped makes contact with an object, the force  $\vec{F}$  exerted on the surface at the contact location  $\vec{x}$  can be calculated from the joint stiffness  $\mathbf{K}$ , the joint Jacobian  $\mathbf{J}$ , and the angular deflection  $\vec{\theta}$ . For small deformations, this comes to

$$\mathbf{JK}\vec{\theta} = \vec{x} \times \vec{F}$$

Note that the force required to detect a contact is proportional to the joint stiffness and inversely proportional to the angular sensitivity of the joint-angle sensor and the radial distance to the sensor.

### III. SPACE-SWEEPING ALGORITHM

As a finger moves through space, it carves out empty regions that do not contain the target object. This “sculpting” analogy inspires the following approach.

#### A. Assumptions

Assume that objects are rigid bodies that do not deform and do not move (i.e., static objects that do not experience

large forces). Likewise, assume finger links are rigid bodies. Under these assumptions, the finger and the object cannot interpenetrate, and any space inside the finger cannot contain the object.

Assume a finger is instrumented with a sensor suite that serves two functions: to localize the surface of the finger in space, and to detect the existence of contact between the surface and the surrounding environment (a boolean condition). Also assume the existence of a control system that can move the finger through space while applying only minimal force to any object it encounters, e.g. a finger with compliant joints on a position-controlled hand.

#### B. Algorithm

Start with a region of interest in 3D space, i.e., a “target volume” that contains the object (identified, for example, by a computer vision system).

---

#### Algorithm 1 Space-Sweeping Algorithm

---

- 1: Discretize a volume containing target object into a set  $N$  of voxels  $\{n_i\}$ ; set state of each voxel to *Unexplored*
  - 2: Move finger through target volume. Update state of voxels inside finger from *Unexplored* to *Empty*
  - 3: When contact occurs, put all voxels containing surface of finger into set  $C$ . This contains all possible locations for the contact. Set state of  $n \in C$  to *PossibleContact*.
  - 4: Narrow  $C$  by moving finger through  $n \in C$  and removing voxels that come inside the finger volume, setting their state to *Empty*. The object prevents finger from passing through actual contact location, but finger can pass through empty space in different orientations.
  - 5: Stop exploring  $C$  when either:
  - 6: A.) The geometric extent of  $C$  has narrowed to an application-appropriate threshold. Set state of  $n \in C$  to *Contact*. This results in contact location.
  - 7: B.) All appropriate motions through  $C$  have been tried. This results in a bounding surface.
- 

The quality of the localization depends on the ability to sweep the finger through voxels in the Potential Contact Set  $C$  that are in fact empty. Ultimately, this resolution is limited by the finger geometry and any surrounding obstacles that constrain permissible finger motion. For contact on a planar

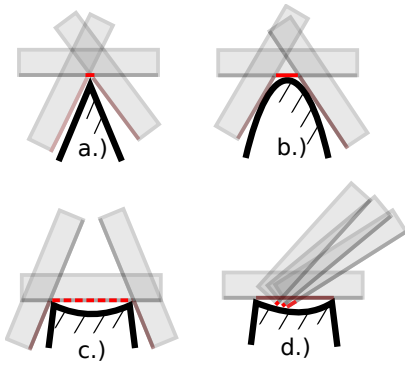


Fig. 3. Contact localization depends on object curvature and the location of the finger contact. Using the finger pad, (a) Sharp corners can be narrowed more closely than (b) gentler curves. (c) Exploration with the finger pad can only establish an outer bound for concave regions, but (d) fingertip exploration does not have this limitation.

finger pad, the degree of localization is dependent on the local curvature of the object as shown in Fig. 3—sharp points can be narrowed to a single voxel, whereas flat areas can be only narrowed to a surface patch that provides an outer bound to object extent. The edges and corners of a finger surface suffer no such limitation and may be used to localize flat and even concave regions provided the finger can fit inside the concavity.

To use this algorithm, a motion planner is required to narrow contact sets to contact locations. For smooth curved surfaces in two dimensions, it is sufficient to roll the finger against the surface. In three dimensions, it is additionally necessary to sweep it slightly from side to side to eliminate nodes containing the side surfaces of the finger. A more general approach that casts it as a motion-planning problem is presented in the discussion.

#### IV. EXPERIMENTAL VALIDATION

To validate the space-sweeping algorithm, the following experiment was performed. A finger was created consisting of two solid links joined by a compliant joint as shown in Fig. 4. Each link was instrumented with an electromagnetic tracker (miniBIRD, Ascension Technology Corporation, Burlington, VT) with a positioning resolution of  $\pm 0.5\text{mm}$  and an angular precision of  $0.5^\circ$ . These read the position and orientation (represented as a  $3 \times 3$  rotation matrix) at a rate of approximately 15Hz and store them to a file on a host machine. Together, they generate the information that would be received from robot forward kinematics and a joint-angle sensor on the finger. To eliminate arm control issues, the position of the finger was controlled manually by the experimenter: approach the object to contact, roll the finger against surface to generate rotation around the axis perpendicular to finger axis and normal surface. Contact was detected by measuring the magnitude of the angle between the distal and proximal trackers and thresholding it at  $15^\circ$ .

The target volume was discretized as a quadtree of pixels to maximize the resolution in the regions of interest (at the surface of the object) and avoid wasting memory on empty space; in 3D an octree would serve a similar function. As

the finger moves through the volume, regions containing the finger surface are divided to create high resolution in the region of the finger contact. The minimum size of such nodes was chosen to be  $1 \times 1 \text{mm}$  in accordance with the resolution of the tracker. Contact sets were thresholded at a span of  $4\text{cm}$  to be classified as contact locations, though in many cases (e.g. edges) the algorithm was able to localize contact to a single node as shown in Fig. 5. The algorithm was implemented in Matlab (R2010a-x86, the Mathworks, Natick, MA) and run on a personal computer, and the data structure used approximately 3000 nodes in each experiment.

The object was placed on a table in a calibrated coordinate frame, and the finger was stroked across its surface. Results are shown in Fig. 5. The algorithm was effective at determining object geometry, especially in regions of high curvature which are important for object recognition and classification. The error was measured by calculating the minimum difference between the actual object location and the center of the contact node, minus half the voxel width. For the block, this was  $0.9 \text{mm}$ ; for the cylinder it was  $0.5 \text{mm}$ .

#### V. DISCUSSION

##### A. Summary

Using compliant joints and joint-angle sensors over time, it is possible to determine object geometry with a sensor suite that is simple, mechanically robust, and requires only basic position control in the supporting hand. The Space-Sweeping algorithm developed here can be used to determine object geometry with this sensing suite under only the light assumption that the object does not deform or move.

##### B. Advantages

An understanding of the advantages of the algorithms presented here requires careful comparison with the extensive prior work on the problem of determining object geometry by touch. *Single-sensor tactile probes* consist of a single tactile sensor mounted to an end-effector, such as that used in [4]. Although simple and potentially inexpensive, they require probing motions to avoid the possibility of contact with uninstrumented sections of the sensor (“blind spots”) and precise control of the position of the supporting hand to avoid exerting large forces. *Tactile Arrays* can reduce the size of blind spots and potentially determine the surface normal and curvature as well as the contact location. However, they tend to be expensive and complicated, and popular commercially-available systems for robotic hands can cost tens of thousands of dollars. *Deformable Fingertips* filled with fluid have also been developed [19], but pose manufacturing challenges. *Intrinsic force-torque sensors* can be used to measure contact forces and locations over the full fingertip [7], but because they are fragile and expensive, they are better suited to manipulation than active exploration. *Dynamic Sensors* can measure small contact forces, but when used alone may completely miss the onset of contact with an object if it is too light, causing catastrophic failure [17]. In contrast, joint-angle sensors on compliant joints are simple,

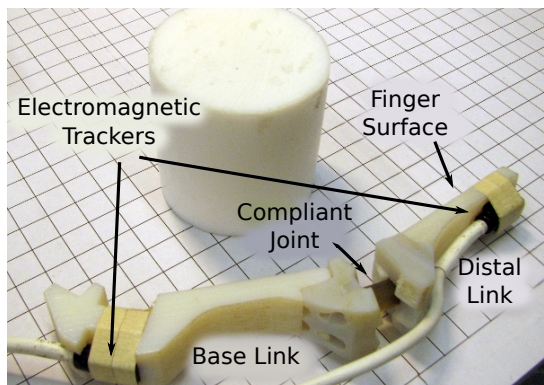


Fig. 4. Experimental setup. The finger consists of two links joined by a compliant joint and fitted with electromagnetic trackers that are used to determine the location of the finger surface and determine the angle across the compliant joint. The base link is moved by hand, and contact is detected with a basic threshold on the magnitude of the joint deflection.

robust, and inexpensive, although they do require motion to determine the object surface geometry.

*Whiskers* also use a passive compliant feeler to determine object geometry, but there are several important differences to the approach presented here. With whiskers, three primary approaches have been used to determine the location of the contact along the feeler. One is to measure the ratio of torque change to angular velocity  $\dot{\tau}/\dot{\theta}$  which can be used to determine the distance to a contact location along a compliant beam [20]–[24]. This closely parallels the function of rat whiskers (*vibrissae*) [23]. Lateral slip of the whisker along the surface of the object can bias readings and correcting it requires repeated measurements in multiple directions to correct [20]. Implementing such an approach using a finger that is neither straight nor continuously flexible is not straightforward, so a secondary set of whiskers would be needed alongside fingers in grasping applications. Other approaches have used the changes in resonant frequency that result when a mechanically excited whisker touches an object [25]. Using such an approach for grasping would also require a separate set of whiskers due to the difference between continuous whiskers and robotic fingers that have only discrete compliant sections joining rigid links.

Finally, several groups have calculated contact location using the intersection point between whisker geometry at two different locations against an object, using rigid [26] or flexible members [27]. However, this approach suffers from a fundamental geometric limitation: as two lines become closer to parallel, the location of their intersection becomes increasingly sensitive to noise in the sensor. This makes the approach unsuitable for large gently curved surfaces unlike the approach described in this paper.

*Enveloping Grasps* have been used for object classification since the early days of tactile sensing. Briot describes a Bayesian classification approach in 1972 [29], and many others have used this sensing approach since then [5], [10]. Although this approach also uses joint-angle sensors, it has two primary downsides: first, it does not capture concave features, which places limits on the object models that can

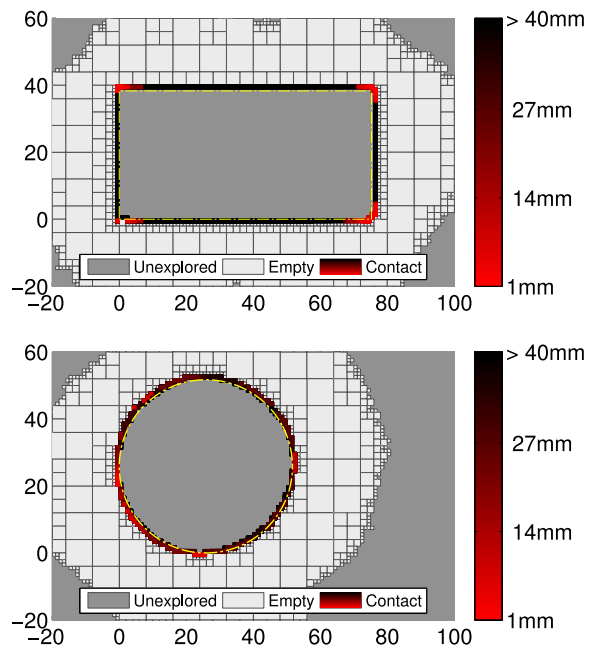


Fig. 5. Experimental results for the Space-Sweeping algorithm used in two dimensions to trace a rectangle and a circle. The extent of the contact set is shown by the colorbar on the right—note that tracing with the fingertip would improve the localization on the straight edges of the rectangle. The maximum distance between the object edge and the edge of the contact node region was 0.9mm for the rectangle and 0.5mm and for the circle.

be used and the level of detail that can be expected. Second, executing an initial grasp requires sufficient prior knowledge of the object position and an unobstructed approach path to avoid collisions. This can be especially problematic in occluded environments where tactile sensing provides the greatest advantage over other sensing systems.

*Self-Posture Changability (SPC)* is another sensing approach to determine object geometry with joint-angle sensors [30] that was developed by Kaneko and Tanie. In SPC, the finger is moved incrementally over the surface of the object under mixed position control and active compliance so that the object surface causes a change in the position of the finger surface. Two finger positions can then be intersected to estimate the contact location. They also present analysis of the object geometry required to avoid the chance of deadlock when stroking fingers across the surface [31].

In contrast, the Space-Sweeping algorithm uses the finger surface itself as the measurement of the object surface, rather than the intersection of finger surfaces. This gives similar localization of the object in regions of high curvature (e.g. edges), but avoids the noise sensitivity generated by geometric intersection in regions of shallow curvature.

*Joint-angle sensors* are also used in Huber and Grupen’s work [28]. They use a Kalman filter to find the location of a hypothetical contact location on a multi-joint finger based on SPC posture intersections, the center of rotation of finger links, and the local surface velocity. The existence of contact is then validated using torque sensors to detect which link contacts are consistent. This enables the detection of fingertip contacts. Although they only develop the planar case, they

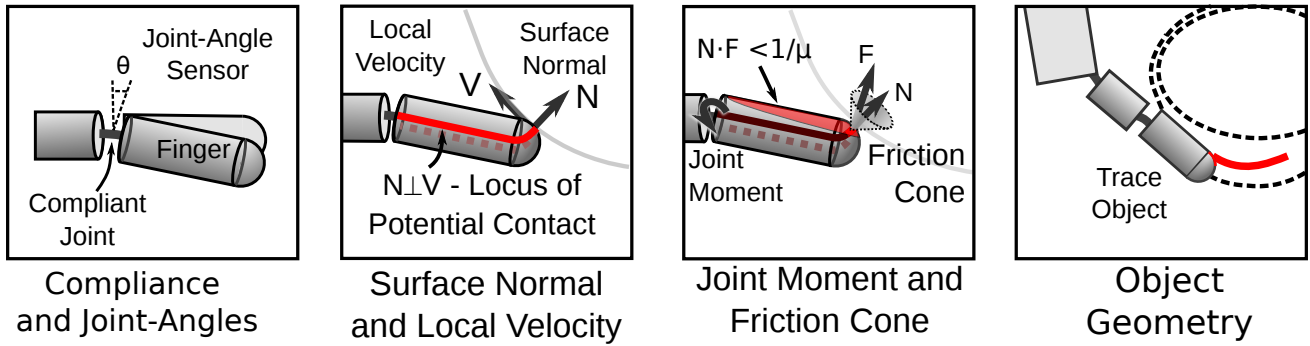


Fig. 6. Compliant finger joints can also complement the approach presented by Huber and Gruben[28], obviating the need for impedance control and torque sensors. Contact is detected through joint deflection, and two criteria are used to narrow the location: at the contact, there can be no local surface velocity in the direction of the surface normal  $\vec{N}(\vec{x}) \cdot \vec{V}(\vec{x}) = 0$ , and a single contact does not exert forces outside the friction cone  $\vec{F} \cdot \hat{n} \leq \frac{1}{\mu}$ .

note it is possible to extend to three dimensions under the assumption of a single contact. Implementing this algorithm with the compliant joint-angle sensors as shown in Fig. 6 would remove the need for impedance control to guide the finger along the surface of the object.

*Compliant Joints and joint-angle sensors* have also been used to determine object geometry. Deckers, Dollar, and Howe present a conceptual framework casting contact localization on compliant fingers as a Markov decision process [32]. Earlier work from Jentoft and Howe presents an initial geometric framework for using compliant joints and joint-angle sensors to determine contact geometry including fingertip tracing and contact localization, though only early experimental results are presented [33]. More recently, Koonjul, Zeglin, and Pollard present three different approaches to localize contact points to one of 10 regions on the finger of a shadow hand: one based on torque equilibrium at the joints, an implementation of SPC using compliant fingers, and an empirical approach based on a classifier and training data [34].

### C. Limitations

The most important limitation for using compliant fingers to detect contact comes from the slow speed required to avoid inertial effects generated by hand motion. This can be minimized by using lightweight fingers or by using a more sophisticated dynamic finger model.

For the Space-Sweeping algorithm, the most important limitation comes from the assumption the object does not move. This limits its suitability for use during manipulation when the object moves in a hand, though it may still work if the object is held fixed and stroked by a free finger. This premise also limits its use for very light or very compliant objects. The resolution is limited by the node size. This sets a lower bound on the precision that can be generated. However, this discretization error is isotropic and only causes a quantitative error (that scales with the node size), as opposed to the singularity created by line intersection approaches which may cause qualitative changes in the detected object geometry. More importantly, graspers can handle some amount of

surface error—in some cases up to several centimeters [35]—and below a certain scale, other parts of the system such as a robot arm controller create larger effects. Finally, the volume discretization requires more memory than a basic contact-point representation. However, this is decreasingly important as the price of memory continues to drop. To reduce the memory needed, the discretization can also be applied locally on the scale of the finger and then converted to a more compact form once the surface has been determined.

### D. Extensions

A number of attractive extensions exist for the Space-Sweeping algorithm. Surface normals can be added trivially to the algorithm's results by storing the finger state when contact is detected; if the contact location is narrowed to the surface of the finger, return the surface normal along with the contact nodes. This would reduce the effects of discretization, yielding a local enveloping polyhedral model of the object that would allow for concave features.

Another promising extension is to cast the motion decision more rigorously as a path-planning problem that would allow for the exploration of highly-obstructed geometry. The motion planner would need to prioritize regions of exploration according to a global goal, and choose motions to generate contact sets, narrow contact sets, and avoid catastrophic collision with the target object. All but the last item could be bundled into a cost function. The final item can be cast as a constraint in worldspace using the current finger state (location, orientation, and joint deformation), the maximum deformation resulting from motion into an unexplored area, contact force limits, and the existing spatial map already generated so far by the sensing algorithm. Note that these all result in geometric space constraints. A number of algorithms exist for such problems each with various strengths, including gradient descent, potential fields, rapidly-expanding random trees (RRTs), etc.

### E. Applications

*Grasp planning* in unstructured environments is one key application for these algorithms. Grasping is an important skill for service robots in homes, hospitals, outdoor environments,

and disaster regions, but significant uncertainty exists in these settings both with respect to the objects and the surrounding world. The low-cost and high mechanical robustness of the algorithms presented here match both the technical and the economic requirements for such applications. The algorithm is also useful for *tactile mapping* of the immediate environment because compliant fingers allow rapid exploration without danger of damage. *Object classification* is another important use.

### F. Conclusion

Methods are presented to determine object geometry using compliant joints, joint-angle sensors, and hand motion. This sensor suite avoids the complexity and cost of tactile arrays and intrinsic sensors and significantly reduces the precision and accuracy of the control required for the supporting end-effector without affecting the quality of sensor data or generating high forces.

The Space-Sweeping algorithm determines a discretized bound for the object under very light assumptions about object geometry—the target object must be rigid and immovable under low forces, but it can be concave, irregular, and surrounded by obstructions. Because the method also determines the free space surrounding the object surface, it lends itself readily to grasp planning.

### REFERENCES

- [1] P. K. Allen, "Object recognition using vision and touch," Ph.D. dissertation, University of Pennsylvania, Philadelphia, PA, USA, 1985.
- [2] H. R. Nicholls and M. H. Lee, "A survey of robot tactile sensing technology," *The Int. Journal of Robotics Research*, vol. 8, no. 3, pp. 3–30, 1989.
- [3] R. Dahiya, G. Metta, M. Valle, and G. Sandini, "Tactile sensing - from humans to humanoids," *IEEE Trans. Robotics*, vol. 26, no. 1, pp. 1–20, 2007.
- [4] R. Russell, "Using tactile whiskers to measure surface contours," in *Proc. IEEE Int. Conf. Robotics and Automation 1992 (ICRA 1992)*, May 1992, pp. 1295–1299 vol.2.
- [5] S. Caselli, C. Magnanini, and F. Zanichelli, "Investigation of polyhedral shape representations and connectionist techniques in haptic object recognition," in *Proc. IEEE/RSJ/Int. Conf. Intelligent Robots and Systems '94 (IROS '94)*, vol. 1, Sep. 1994, pp. 232–239 vol.1.
- [6] P. C. Gaston and T. Lozano-Perez, "Tactile recognition and localization using object models: The case of polyhedra on a plane," *IEEE Trans. Pattern Analysis and Machine Intelligence*, vol. PAMI-6, no. 3, pp. 257–266, May 1984.
- [7] A. Bicchi, J. K. Salisbury, and D. L. Brock, "Contact sensing from force measurements," *The Int. Journal of Robotics Research*, vol. 12, no. 3, pp. 249–262, June 1993.
- [8] A. Petrovskaya, O. Khatib, S. Thrun, and A. Ng, "Bayesian estimation for autonomous object manipulation based on tactile sensors," in *Proc. IEEE Int. Conf. Robotics and Automation 2006 (ICRA 2006)*, May 2006, pp. 707–714.
- [9] R. Fearing and T. Binford, "Using a cylindrical tactile sensor for determining curvature," *IEEE Trans. Robotics and Automation*, vol. 7, no. 6, pp. 806–817, Dec. 1991.
- [10] P. Allen and P. Michelman, "Acquisition and interpretation of 3-d sensor data from touch," *IEEE Trans. Robotics and Automation*, vol. 6, no. 4, pp. 397–404, August 1990.
- [11] A. Okamura and M. Cutkosky, "Haptic exploration of fine surface features," in *Proc. IEEE Int. Conf. Robotics and Automation 1999 (ICRA 1999)*, vol. 4, 1999, pp. 2930–2936.
- [12] Y.-B. Jia, L. Mi, and J. Tian, "Surface patch reconstruction via curve sampling," in *Proc. IEEE Int. Conf. Robotics and Automation 2006 (ICRA 2006)*, May 2006, pp. 1371–1377.
- [13] K. Hsiao, L. Kaelbling, and T. Lozano-Perez, "Grasping pomdps," in *Proc. IEEE Int. Conf. Robotics and Automation 2007 (ICRA 2007)*, April 2007, pp. 4685–4692.
- [14] R. S. Fearing, *Tactile sensing for shape interpretation*. New York, NY, USA: Springer-Verlag New York, Inc., 1990, pp. 209–238.
- [15] M. Moll and M. Erdmann, "Reconstructing shape from motion using tactile sensors," *Proc. 2001 IEEE/RSJ Int. Conf. Intelligent Robots and Systems, IROS 2001.*, vol. 2, pp. 692–700 vol.2, 2001.
- [16] T. Tsujimura and T. Yabuta, "Object detection by tactile sensing method employing force/torque information," *IEEE Trans. Robotics and Automation*, vol. 5, no. 4, pp. 444–450, Aug. 1989.
- [17] A. Dollar, L. Jentoft, J. Gao, and R. Howe, "Contact sensing and grasping performance of compliant hands," *Autonomous Robots*, vol. 28, pp. 65–75, 2010.
- [18] S. Hirose, S. Inoue, and K. Yoneda, "The whisker sensor and the transmission of multiple sensor signals," *Advanced Robotics*, vol. 4, no. 2, pp. 105–117, 1989.
- [19] D. Hristu, N. Ferrier, and R. Brockett, "The performance of a deformable-membrane tactile sensor: basic results on geometrically-defined tasks," in *Proc. 2000 IEEE Int. Conf. Robotics and Automation, 2000. (ICRA 2000)*, vol. 1, 2000, pp. 508–513.
- [20] M. Kaneko, N. Kanayama, and T. Tsuji, "3-d active antenna for contact sensing," in *Proc. IEEE Int. Conf. Robotics and Automation 1995 (ICRA 1995)*, vol. 1, May 1995, pp. 1113–1119 vol.1.
- [21] G. Scholz and C. Rahn, "Profile sensing with an actuated whisker," *IEEE Trans. Robotics and Automation*, vol. 20, no. 1, pp. 124–127, 2004.
- [22] A. Schultz, J. Solomon, M. Peshkin, and M. Hartmann, "Multifunctional whisker arrays for distance detection, terrain mapping, and object feature extraction," in *Proc. IEEE Int. Conf. Robotics and Automation 2005 (ICRA 2005)*, April 2005, pp. 2588–2593.
- [23] M. Hartmann, "Active sensing capabilities of the rat whisker system," *Autonomous Robots*, vol. 11, pp. 249–254, 2001.
- [24] S. Anderson, M. Pearson, A. Pipe, T. Prescott, P. Dean, and J. Porrill, "Adaptive cancelation of self-generated sensory signals in a whisking robot," *IEEE Trans. Robotics*, vol. 26, no. 6, pp. 1065–1076, 2010.
- [25] N. Ueno and M. Kaneko, "Dynamic active antenna - a principle of dynamic sensing," in *Proc. IEEE Int. Conf. Robotics and Automation 1994 (ICRA1994)*, May 1994, pp. 1784–1790 vol.2.
- [26] R. A. Russell and J. A. Wijaya, "Object location and recognition using whisker sensors," in *Australian Conference on Robotics and Automation, CD-ROM Proceedings ISBN*, 2003, pp. 0–9 587 583.
- [27] T. Clements and C. Rahn, "Three-dimensional contact imaging with an actuated whisker," *Robotics, IEEE Transactions on*, vol. 22, no. 4, pp. 844–848, Aug. 2006.
- [28] R. Grupen and M. Huber, "2-d contact detection and localization using proprioceptive information," in *Proc. IEEE Int. Conf. Robotics and Automation 1993 (ICRA 1993)*, May 1993, pp. 130–135 vol.2.
- [29] M. Briot, M. Renaud, and Z. STOJILJKOVIC, "An approach to spatial pattern recognition of solid objects," *IEEE Trans. Systems, Man and Cybernetics*, vol. 8, no. 9, pp. 690–694, Sept. 1978.
- [30] M. Kaneko and K. Tanie, "Contact point detection for grasping of an unknown object using self-posture changeability (spc)," in *Proc. IEEE Int. Conf. Robotics and Automation 1990 (ICRA 1990)*, May 1990, pp. 864–869 vol.2.
- [31] —, "Self-posture changeability (spc) for 3-d link system," in *Proc. 1992 IEEE Int. Conf. Robotics and Automation (ICRA 1992)*, May 1992, pp. 1635–1640 vol.2.
- [32] P. Deckers, A. M. Dollar, and R. D. Howe, "Guiding grasping with proprioception and markov models," in *Int. Conf. Robotics, Science, and Systems (RSS)*, June 2007.
- [33] L. P. Jentoft and R. D. Howe, "Compliant fingers make simple sensors smart," in *Proc. 2010 IFToMM / ASME Workshop on Underactuated Grasping (UG2010)*, Montreal, Canada, Aug. 19 2010.
- [34] G. S. Koonjul, G. J. Zeglin, and N. S. Pollard, "Measuring contact points from displacements with a compliant articulated robot hand," in *Proc. 2011 Int. Conf. Robotics and Automation (ICRA 2011)*, 2011.
- [35] A. Dollar and R. Howe, "Simple, robust autonomous grasping in unstructured environments," in *2007 IEEE Int. Conf. Robotics and Automation (ICRA2007)*, 2007, pp. 4693–4700.