



Vitamin D Binding Protein-Macrophage Activating Factor Directly Inhibits Proliferation, Migration, and uPAR Expression of Prostate Cancer Cells

Citation

Gregory, Calvin J., Bing Zhao, Diane R. Bielenberg, Sami Dridi, Jason Wu, Weihua Jiang, Bin Huang, Steven Pirie-Shepherd, and Michael Fannon. 2010. Vitamin D binding protein-macrophage activating factor directly inhibits proliferation, migration, and uPAR expression of prostate cancer cells. PLoS ONE 5(10): e13428.

Published Version

doi:10.1371/journal.pone.0013428

Permanent link

<http://nrs.harvard.edu/urn-3:HUL.InstRepos:4878065>

Terms of Use

This article was downloaded from Harvard University's DASH repository, and is made available under the terms and conditions applicable to Other Posted Material, as set forth at <http://nrs.harvard.edu/urn-3:HUL.InstRepos:dash.current.terms-of-use#LAA>

Share Your Story

The Harvard community has made this article openly available.
Please share how this access benefits you. [Submit a story](#).

[Accessibility](#)

Vitamin D Binding Protein-Macrophage Activating Factor Directly Inhibits Proliferation, Migration, and uPAR Expression of Prostate Cancer Cells

Kalvin J. Gregory¹✉, Bing Zhao¹✉, Diane R. Bielenberg², Sami Dridi¹, Jason Wu¹, Weihua Jiang¹, Bin Huang³, Steven Pirie-Shepherd⁴, Michael Fannon^{1*}

1 Department of Ophthalmology and Visual Sciences, University of Kentucky, Lexington, Kentucky, United States of America, **2** Vascular Biology Program, Department of Surgery, Harvard Medical School, Children's Hospital, Boston, Massachusetts, United States of America, **3** Markey Cancer Center, University of Kentucky, Lexington, Kentucky, United States of America, **4** CovX, San Diego, California, United States of America

Abstract

Background: Vitamin D binding protein-macrophage activating factor (DBP-maf) is a potent inhibitor of tumor growth. Its activity, however, has been attributed to indirect mechanisms such as boosting the immune response by activating macrophages and inhibiting the blood vessel growth necessary for the growth of tumors.

Methods and Findings: In this study we show for the first time that DBP-maf exhibits a direct and potent effect on prostate tumor cells in the absence of macrophages. DBP-maf demonstrated inhibitory activity in proliferation studies of both LNCaP and PC3 prostate cancer cell lines as well as metastatic clones of these cells. Flow cytometry studies with annexin V and propidium iodide showed that this inhibitory activity is not due to apoptosis or cell death. DBP-maf also had the ability to inhibit migration of prostate cancer cells *in vitro*. Finally, DBP-maf was shown to cause a reduction in urokinase plasminogen activator receptor (uPAR) expression in prostate tumor cells. There is evidence that activation of this receptor correlates with tumor metastasis.

Conclusions: These studies show strong inhibitory activity of DBP-maf on prostate tumor cells independent of its macrophage activation.

Citation: Gregory KJ, Zhao B, Bielenberg DR, Dridi S, Wu J, et al. (2010) Vitamin D Binding Protein-Macrophage Activating Factor Directly Inhibits Proliferation, Migration, and uPAR Expression of Prostate Cancer Cells. PLoS ONE 5(10): e13428. doi:10.1371/journal.pone.0013428

Editor: Joseph Najbauer, City of Hope National Medical Center, United States of America

Received: January 21, 2010; **Accepted:** September 10, 2010; **Published:** October 18, 2010

Copyright: © 2010 Gregory et al. This is an open-access article distributed under the terms of the Creative Commons Attribution License, which permits unrestricted use, distribution, and reproduction in any medium, provided the original author and source are credited.

Funding: This work was supported by Department of Defense (DOD) grant PC030286 and Research to Prevent Blindness Challenge Grant. The funders had no role in study design, data collection and analysis, decision to publish, or preparation of the manuscript.

Competing Interests: The authors have declared that no competing interests exist.

* E-mail: michael.fannon@uky.edu

✉ These authors contributed equally to this work.

Introduction

Vitamin D binding protein (DBP) is the main transporter of vitamin D in the bloodstream. It has a molecular weight between 52–59 kDa and is found in the bloodstream at a level between 300–600 µg/mL [1,2]. DBP is the parent molecule of DBP-maf [3]. DBP-maf is the product of selective deglycosylation of DBP and has been shown to be a potent antiangiogenic and antitumorigenic molecule [4–6]. We have demonstrated previously in a xenograft mouse model that DBP-maf is a potent inhibitor of human pancreatic tumors and that its ability to inhibit tumor growth *in vivo* is due, in part, to its antiangiogenic properties [4]. In that study it was shown that DBP-maf is antiangiogenic based on the reduction of vessels in the chick chorioallantoic membrane, and based on reduced microvessel density in tumors. It has been suggested in other studies that its primary antitumor mechanisms are immunological, due to its activation of macrophages. Recent clinical studies by Yamamoto *et al* have shown potent anti-tumor activity, as well as activity against HIV [7–10]. This activity was measured as a function of reduced serum levels of the enzyme

α-N-acetylgalactosaminidase (nagalase). Nagalase deglycosylation of DBP prevents it from activating macrophages and therefore suppresses the immune response [11]. The basic mechanism proposed in all cases is largely the activation of macrophages and the ensuing immune responses. In HIV it has been suggested that defective antigen presentation is a factor in immune deficiency [12]. The presence of elevated nagalase in the plasma of HIV patients suggests that macrophage activation may be inhibited in these patients [13]. In addition, nagalase has been shown to be an intrinsic component of an envelope protein promoting fusion for the initiation of infection [11]. The plasma concentration of nagalase in patients with systemic lupus erythematosus was also found to be elevated. In lupus, autoantibodies form pathogenic immune complexes and are deposited in tissues. The clearance of these complexes by macrophages is inhibited if macrophage activation is disrupted [14]. Cancer cells have been shown to produce nagalase [15] and elevated concentrations in serum have been recorded in a number of cancer patients suffering from melanoma [16], prostate, colorectal, and metastatic breast cancer [7–9]. A thorough understanding of DBP-maf activity is yet to be

attained, but its potential as an antiangiogenic and immunogenic therapy is clear.

Four prostate cancer cell lines were used in this study in order to include; the androgen sensitive (LNCaP) and insensitive (PC3M) lines, as well as highly metastatic lines (LNCaPLN3 and PC3MLN4) derived from each parental line, respectively.

The ability of DBP-maf to have a direct effect on tumor cells has not been reported. This study investigated the role of DBP-maf in direct inhibition of activities such as proliferation, migration, and expression of uPAR that are related to tumor growth and metastasis.

Materials and Methods

Synthesis of DBP-maf

(a) Preparation of (1-3) β -D-galactosidase-agarose beads.

Preparation of beads was done using a modification of the method of Yamamoto *et al* [17]. Cyanogen bromide-activated beads (0.5 g) were washed with 1 mM HCl (3X, 10 mL per wash) using suction filtration. The beads were then washed with DDI water and resuspended in 2 mL of coupling buffer (0.1 M NaHCO₃, 0.5 M NaCl, pH 8.3). (1-3) β -D-galactosidase (1000 units) was added to the beads/coupling buffer and then shaken with an over and under mixer for 2 hours at room temperature. The beads were then

washed with coupling buffer and resuspended in blocking buffer (coupling buffer plus 0.2 M glycine). The suspension was shaken overnight at 4°C. The beads were then washed with coupling buffer followed by 0.1 M sodium acetate, 0.5 M NaCl, pH 4.0, and the washes were repeated for a total of four times. The beads were washed with a final wash of coupling buffer then spun down and resuspended in 1.0 M NaCl.

(b) Determination of (1-3) β -D-galactosidase-agarose bead activity.

Determination of bead activity was done using a modification of the method of Yamamoto *et al* [17]. In order to determine the activity of the (1-3) β -D-galactosidase-agarose beads, 50 μ L of the bead suspension were added to 0.95 mL of assay buffer/chromogenic substrate (PBS, 3 mM 2-nitrophenyl- β -D-galactopyranoside, 10 mM MgCl₂, 0.1 mM β -mercaptoethanol), and the suspension was shaken at room temperature for 15 min. The reaction was stopped with 33 μ L of 1 M sodium carbonate, and the absorbance was measured at 405 nm. Activity was expressed as units/mL of bead suspension, where 1 unit is defined as the number of μ mol of p-nitrophenol formed per minute. A molar absorptivity of 18380 L/mol cm, and a path length of 0.25 cm corresponding to a 200 μ L volume in a 96-well plate were used to calculate the concentration of p-nitrophenol.

(c) **Deglycosylation of DBP with (1-3) β -D-galactosidase-agarose beads.** Deglycosylation of DBP was done using a modification of the method of Yamamoto *et al* [17]. DBP

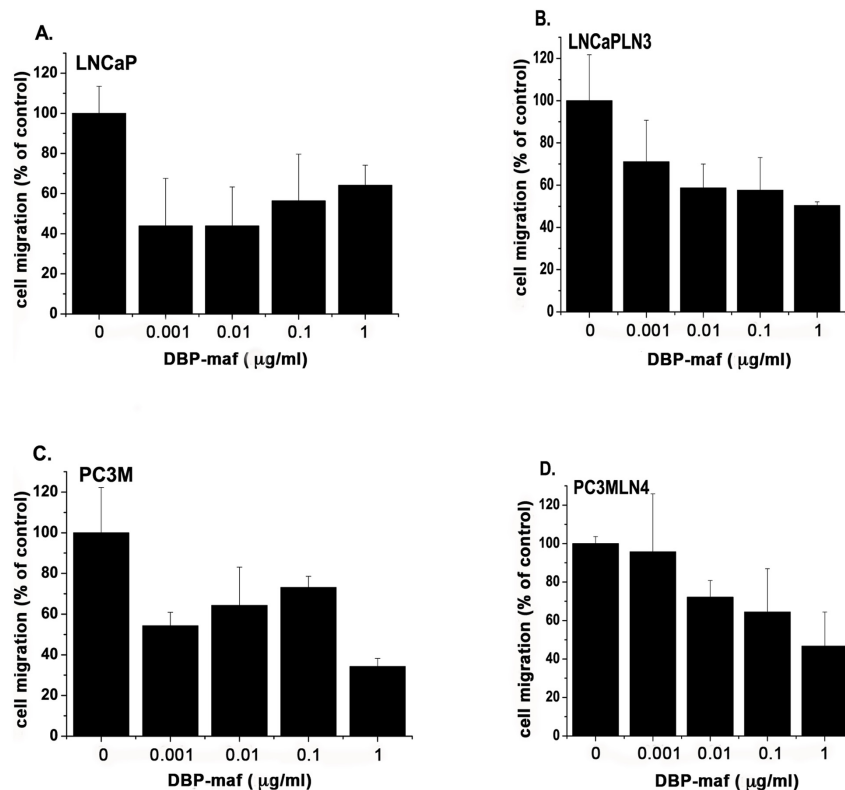


Figure 1. DBP-maf inhibits tumor cell migration. LNCaP (A), LNCaPLN3 (B), PC3M (C) or PC3MLN4 (D) cells were added (150,000/well) to the top chamber of a modified Boyden chamber (+/- DBP-maf) with 10% FBS in the bottom chamber. After 6 hours cells were removed that had not migrated and remaining cells were quantitated using an acid phosphatase assay. Results were normalized to control. Experiments were performed a minimum of three times and error is shown as +/- SD. Compared to cell growth without DBP-maf, adding DBP-maf had a statistically significant overall reduction of cell migration at 30% ($P = 0.0003$) for the combined four tumor cell types. Individual significant reduction rates were found with each of these tumor cell types. Compared to control, significant reduction was seen with DBP-maf at (A) 20% $P = 0.0022$ (B) 20% $P = 0.0029$ (C) 10% $P = .0045$ (D) 30% $P = .0094$. $n = 3$.

doi:10.1371/journal.pone.0013428.g001

(CalBiochem, San Diego, CA) was added to a final concentration of 0.05 mg/mL in PBS pH 6.0, 10 mM MgCl₂, with 0.007 U of (1-3) β -D-galactosidase-agarose and 0.004 U of neuraminidase-agarose (Sigma, St. Louis), and shaken at room temperature for 4 hours. The total reaction volume was 1 mL. The beads were then sedimented by centrifugation and removed. DBP-maf was stored in aliquots at -20°C .

DBP-maf peptide

A 14 amino acid DBP-maf peptide was synthesized (Ana Spec, Fremont, CA) with the amino acid sequence: Ac-TPTE-LAKLVNKRSE. Purity was $>90\%$.

Cell culture

PC3M, PC3MLN4, LNCaP, and LNCaPLN3 cells were kindly provided by Dr. Curtis Pettaway and Dr. Isaiah J. Fidler (M. D. Anderson Cancer Center). The PC3M cell line was isolated from liver metastases produced in nude mice subsequent to intrasplenic injection of the androgen-insensitive PC3 human prostate carcinoma cell line [18]. The metastatic sublines, PC3MLN and LNCaPLN, were created by injecting the parental cells orthotopically into the dorsal lobe of the prostate of nude mice

and culturing the cells that had metastasized to the sentinel (paraortic) lymph node. After culture for 3–5 passages, these cells were re-injected into the prostate of subsequent nude mice. This process was repeated for 3 cycles to create the metastatic line, LNCaPLN3 and for four cycles to create the metastatic line, PC3MLN4 [18]. All tumor cells were cultured in RPMI 1640 (Invitrogen) with 10% fetal bovine serum (FBS), penicillin (100 U/mL)/streptomycin (100 $\mu\text{g}/\text{mL}$), and L-glutamine and incubated at 37°C , 10% CO₂.

Acid phosphatase colorimetric assay

At the conclusion of each experiment, cells were washed in PBS then 450 μL of acid phosphatase buffer (10 mM p-nitrophenol phosphate, 0.1 M sodium acetate, 0.1% Triton X-100, pH 5.8) were added to each well. Cells were incubated at 37°C for 45 minutes. Fifty μL of 1 N NaOH were added to each well to stop the reaction and absorbance was measured at 405 nm [19,20]. Cell number of each cell type was calibrated with absorbance using a hemacytometer to ensure that acid phosphatase levels correlated in a linear fashion with cell number. Analyses and plotting for all assays were done using Origin Pro 8 (Northampton, MA).

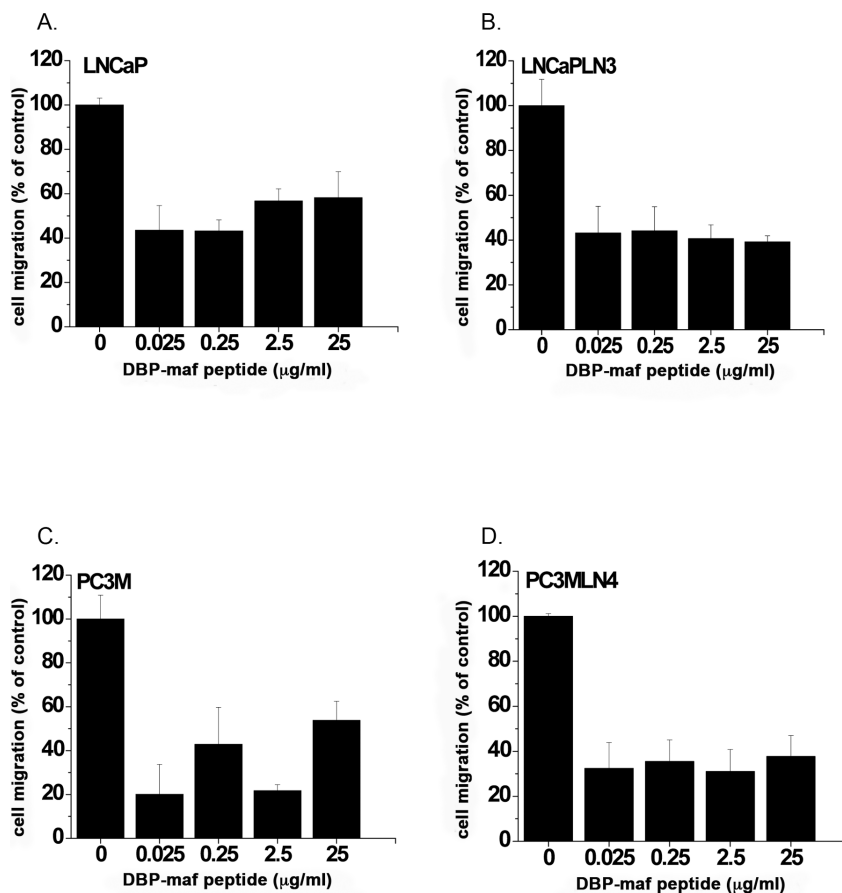


Figure 2. A DBP-maf peptide inhibits tumor cell migration. LNCaP (A), LNCaPLN3 (B), PC3M (C) or PC3MLN4 (D) cells were added (150,000/well) to the top chamber of a modified Boyden chamber (+/– DBP-maf) with 10% FBS in the bottom chamber. After 6 hours cells were removed that had not migrated and remaining cells were quantitated using an acid phosphatase assay. Results were normalized to control. Experiments were performed a minimum of three times and error is shown as \pm SD. Compared to migration without DBP-maf, adding DBP-maf had a statistically significant reduction of migration at 40% ($P < 0.0001$) for the combination of all four tumor cell types. Individual significant reduction rates were found with each of these tumor cell types. Compared to control, significant reduction was seen with DBP-maf at (A) 30% $P = 0.0038$ (B) 40% $P = 0.0016$ (C) 20% $P = .0038$ (D) 40% $P = .0005$. $n = 3$. doi:10.1371/journal.pone.0013428.g002

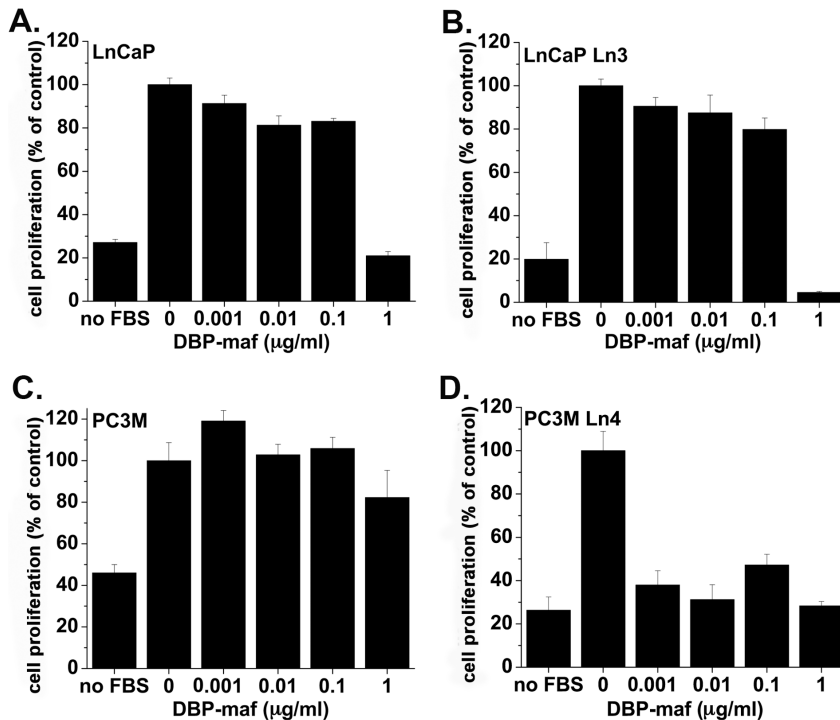


Figure 3. DBP-maf inhibits tumor cell proliferation. LNCaP (A), LNCaPLN3 (B), PC3M (C) or PC3MLN4 (D) cells were seeded in 24 well dishes overnight, then medium +/- DBP-maf was added with 1% FBS. After 72 hours cells were quantitated using an acid phosphatase assay. Results were normalized to control. Experiments were performed a minimum of three times and error is shown as +/- SD. Compared to control, significant reduction was seen with DBP-maf at (A) 50% P=0.0001 (B) 50% P=0.0001 (C) no significant reduction (D) 40% P=.0073. n=3. doi:10.1371/journal.pone.0013428.g003

Cell migration assays

Migration assays were performed using a modified Boyden chamber Millicell culture inserts (Millipore, Billerica, MA) with 8 µm pores [20–22]. Upper membranes were pre-incubated overnight with fibronectin (10 µg/mL in PBS), which was aspirated from wells the following morning. Cells (150,000 cells/well) were plated in basal medium with 0.10% gelatin with or without DBP-maf or DBP. Some sample wells were stained at the completion of the incubation period to ensure that cell adhesion on the upper membranes was uniform under all conditions. Basal medium was added to bottom wells with or without 10% FBS. Cells were incubated for six hours at 37°C, 10% CO₂. Cells that

did not migrate were removed from the top of the membrane and the migrated cells were quantitated using an acid phosphatase colorimetric assay.

Proliferation assays

Tumor cells were maintained in RPMI 1640 (Invitrogen) with 10% FBS, penicillin/streptomycin, and L-glutamine and incubated at 37°C, 10% CO₂. Cells were trypsinized and added to 24 well plates (5,000 cells/well) in 0.5 mL of culture medium. Cells were serum-starved overnight then medium was replaced with RPMI 1640, 1% FBS, penicillin/streptomycin and L-glutamine and incubated for 72 hours with or without DBP-maf or DBP [23]. Cell proliferation was assessed using an acid phosphatase colorimetric assay [4,23].

Flow cytometry

Cells were grown to ~80% confluence in 100 mm² dishes. Cells were treated with or without DBP-maf (1 µg/mL) and incubated at 37°C for 48 hours. Cells were trypsinized, centrifuged, aliquoted into tubes and labeled with annexin V and propidium iodide using an apoptosis detection kit (APOAF, Sigma, St. Louis, MO). Annexin V and PI staining were performed following the manufacturer's recommendations. Flow cytometry analysis was performed using a Cytomation MoFlo cell sorter following the manufacturer's recommendations.

Reverse transcription and real-time quantitative polymerase chain reaction (RTQPCR)

Total RNA was extracted from human cells using Trizol reagent (Invitrogen) according to manufacturer's recommendations and were treated with RNase-free DNase (Ambion). RNA integrity and

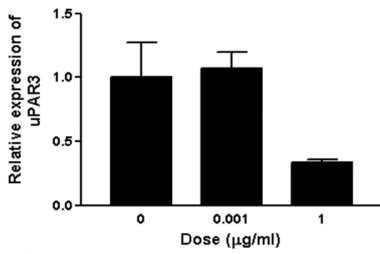
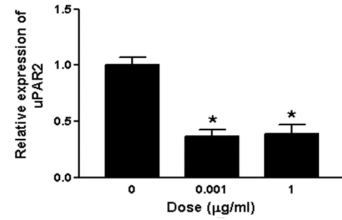
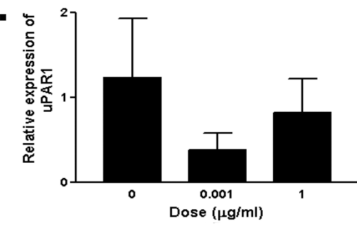
Table 1. FACS analysis of apoptosis or necrosis.

Tumor cell type	Apoptotic or necrotic cells (%)	P-value
LNCaP	32	<0.0001
+ DBP-maf	18	
LNCaPLN3	30	<0.0001
+ DBP-maf	21	
PC3M	15	<0.0001
+ DBP-maf	23	
PC3M Ln4	31	<0.0001
+ DBP-maf	6	

Cells were treated with or without 1 µg/mL DBP-maf for 48 hours, propidium iodide and annexin V were added and cells were analyzed using flow cytometry. Results are representative of three experiments. doi:10.1371/journal.pone.0013428.t001

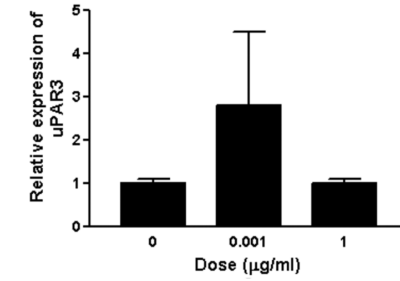
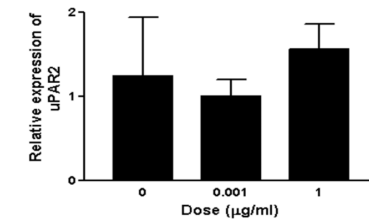
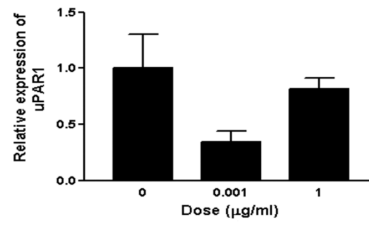
LNCaP 24h DBP

A.



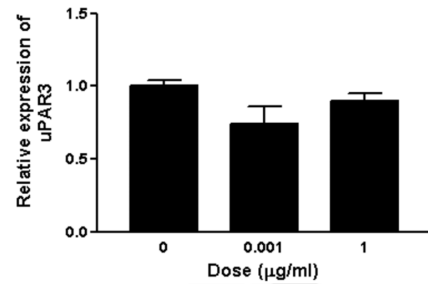
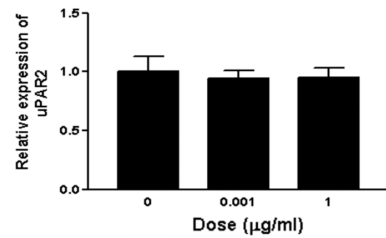
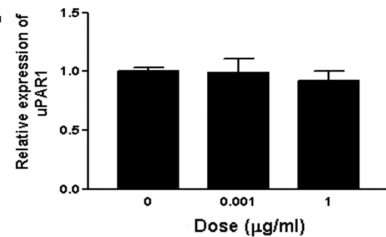
DBP-maf

B.



LNCaPLN3 24h DBP

C.



DBP-maf

D.

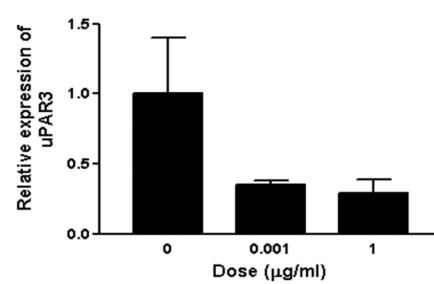
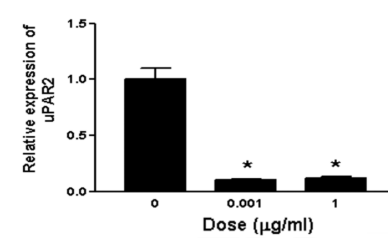
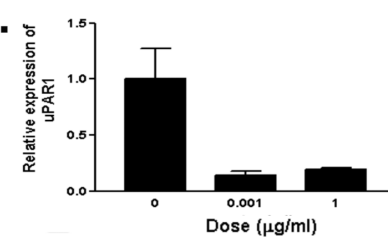


Figure 4. DBP-maf inhibits expression of uPAR in LNCaPLN3 cells. LNCaP and LNCaPLN3, cells were treated with DBP or DBP-maf (0.001 and 1 $\mu\text{g}/\text{mL}$) and incubated for 24 hours then harvested. RT products (cDNA), identified as uPAR1, 2, and 3, were amplified by real-time quantitative PCR. doi:10.1371/journal.pone.0013428.g004

quality was assessed via 1% agarose gel electrophoresis and the concentrations were determined spectrophotometrically (Nano-Drop 1000 Spectrophotometer V3.7, ThermoFisher Scientific). Total RNA (1 μg) was reverse transcribed as previously described [24] using qScript cDNA SuperMix (Quanta Biosciences). The RT products (cDNA) were amplified by real-time quantitative PCR (Applied Biosystems 7900 HT Fast Real-Time PCR system) with Power SYBR green Master Mix. Oligonucleotide primers specific for human uPAR variant 1 (Genebank accession n^o NM-002659, forward 5'-CAACGAGGGCCCAATCCT-3' and reverse 5'-GTAACACTGGCGGCCATTCT-3'), uPAR variant 2 (Genebank accession n^o NM-001005376, forward 5'-CAACGAGGGCCCAATCCT-3' and reverse 5'-CACTGGCGGCCATTCTG-3'), uPAR variant 3 (Genebank accession n^o NM-001005377, forward 5'-GCCGTTACCTCGAATGCATT-3' and reverse 5'-GGCCCCCTCTCACAGCTCAT-3'), and 18S rRNA (forward 5'-CGCAGCTAGGAATAATGGAATAGG-3' and reverse 5'-GCCTCAGTTCCGAAAACCAA-3') were used. The QPCR cycling conditions were 50°C for 2 min, 95°C for 10 min followed by 40 cycles of a two-step amplification program (95°C for 15 s and 58°C for 1 min). At the end of the amplification, melting curve analysis was applied using the dissociation protocol from the Sequence Detection system to exclude contamination with unspecific PCR products. The PCR products were also confirmed by agarose gel and showed only one specific band of the predicted size. For negative controls, no RT products were used as templates in the QPCR and no band was detected on the gel.

Relative expressions of target genes were determined by the $2^{-\Delta\Delta C_t}$ method [25]. The untreated cells were chosen as the calibrators.

Immunoblotting

Immunoblotting was performed using a modification of the method of Besch *et al* [26]. Cells were cultured in 100 mm² dishes and grown to ~80% confluence then serum-starved overnight. Medium was replaced with RPMI (1% FBS). DBP or DBP-maf was added at indicated concentrations. Cells were incubated for 24 or 72 hours at 37°C then lysed using HTG buffer (20 mM HEPES, pH 7.4, 10% glycerol, 1% Triton X-100) and harvested using a cell scraper. Phenylmethanesulphonyl fluoride (PMSF) was added (100 μM). Lysates were separated using SDS-PAGE. Lanes were normalized using equal protein loading (40 $\mu\text{g}/\text{lane}$). Protein levels were determined using a BCA assay (Pierce, Rockford, IL). Bands were transferred to a PVDF membrane. The membrane was blocked overnight in 10% powdered non-fat milk and 0.10% Tween 20 in PBS. The membrane was hybridized with an anti uPAR antibody (Santa Cruz, CA), followed by hybridization with a horseradish peroxidase-linked secondary antibody and visualized using chemiluminescence. Vinculin was used as a loading control.

Statistical analysis

The effect of DBP-maf was tested separately for cell migration and proliferation assays. A one sided t-test was used to measure the statistical significance of reductions of tumor growth at various levels. A two-sided Z-test was used to measure the effect of DBP-maf in apoptosis or necrosis. All analyses were done using SAS Statistical software version 9.1 (SAS Institute, Cary, North Carolina) and a *P*-value ≤ 0.01 was used to identify statistical significance.

Results

DBP-maf inhibits the migration of tumor cells

Invasion and migration of tumor cells are important steps in tumor growth and metastasis. DBP-maf was tested for its effect on cell migration in four tumor lines- two parental prostate cancer lines (LNCaP and PC3M) and two metastatic clones of these lines (LNCaPLN3 and PC3MLN4), using a modified Boyden chamber. The basal level of migration between each parental line and its respective metastatic clone remained unchanged. At all doses tested, inhibition of migration was observed (Figure 1).

A DBP-maf peptide inhibits tumor cell migration

The preparation of DBP-maf involves multi-step enzymatic processes. The selective deglycosylation is a necessary step in the process because expression of DBP-maf in *E. coli* produced a protein with no activity [4]. An active but more easily formulated version of the molecule would make the manufacture of DBP-maf easier and less expensive. For these reasons a DBP-maf peptide was synthesized using a sequence from the parent molecule that had shown activity in other studies [27]. The peptide was tested to determine its potential to inhibit tumor cell migration. As shown in Figure 2, the peptide showed significant ability to inhibit the migration of all tumor lines. The inhibitory effect did not increase at higher doses, suggesting its IC_{50} was lower than the dose range tested.

DBP-maf inhibits tumor cell proliferation

The four cell lines were then tested to determine their sensitivity to DBP-maf in proliferation studies. As shown in Figure 3A, DBP-maf at 1 $\mu\text{g}/\text{mL}$ reduced proliferation to baseline levels or below in all cell lines with the exception of PC3M. It was interesting that, although the PC3M cells were not sensitive to DBP-maf in this assay, the metastatic clone PC3MLN4 had developed sensitivity to it.

At 1 $\mu\text{g}/\text{mL}$, DBP-maf had a statistically significant reduction of cell growth at 40% ($P = 0.0073$) for the combination of all tumor cell types. Individual significant reduction rates (without DBP-maf vs. 1 $\mu\text{g}/\text{mL}$) were also found among these tumor cell types except PC3M in which no significant reduction was found (Figure 3).

Proliferation studies using the DBP-maf peptide showed no reduction in proliferation with any of the cell lines (data not shown). This suggests that the ability to inhibit migration and proliferation may reside in distinct areas of the protein and that this peptide sequence may have no role in inhibiting proliferation. It is also possible that the site responsible for full DBP-maf activity is more complex and requires the selectively deglycosylated sequence of the protein to be present.

In order to determine whether the inhibition of tumor cell proliferation was due to cell death or apoptosis, flow cytometry analysis was done using propidium iodide and annexin V markers. These studies showed no evidence of either significant cell death or toxicity resulting from DBP-maf treated cells (Table 1) and, with the exception of the PC3M parental line, showed a reduction.

RT-PCR shows reduction of uPAR expression in cells treated with DBP-maf

The expression of urokinase plasminogen activator receptor (uPAR) has been shown to correlate with increased metastasis in

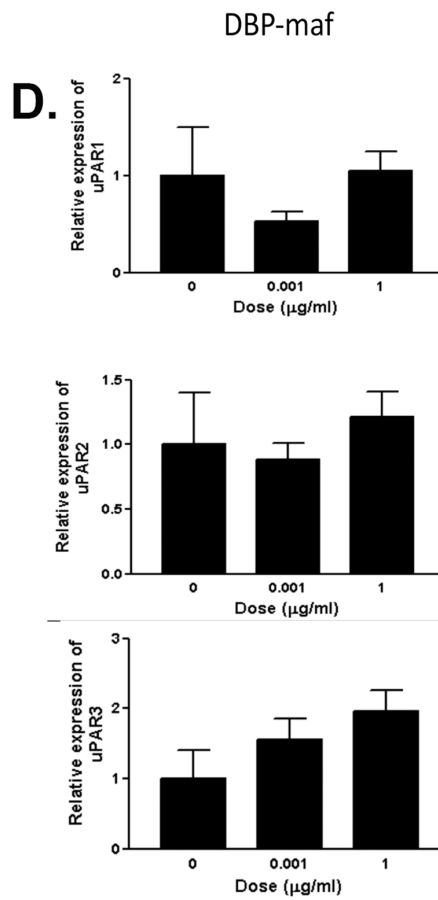
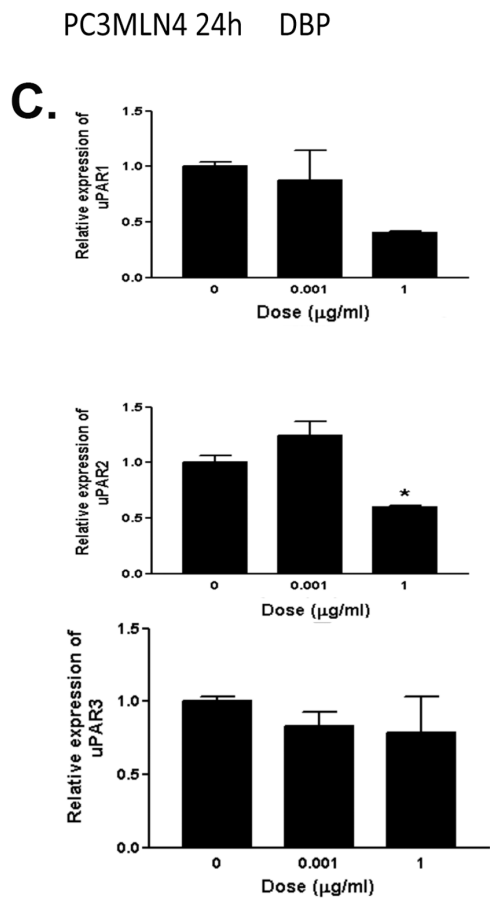
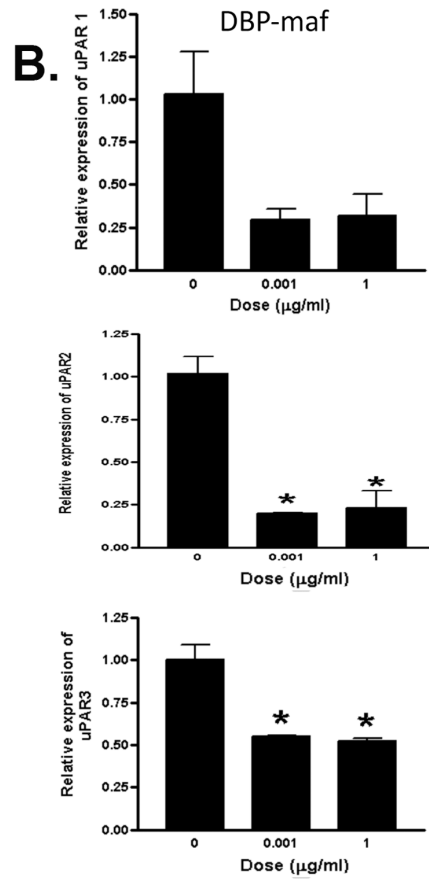
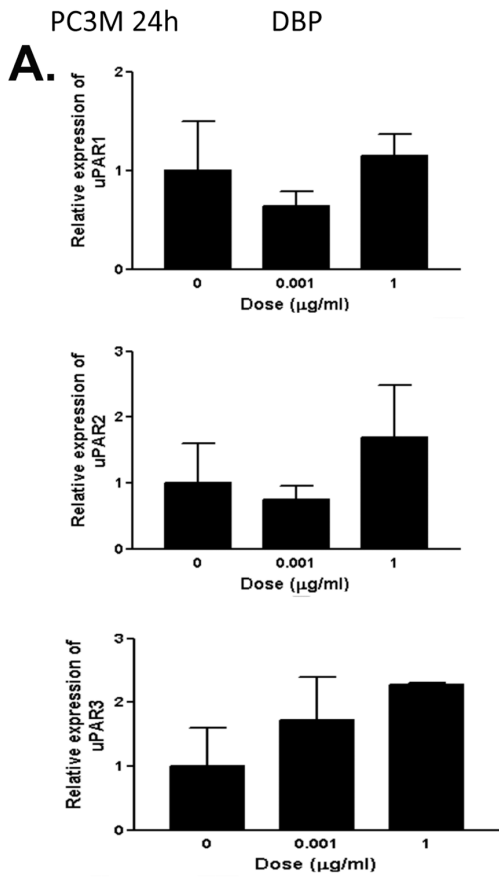


Figure 5. DBP-maf inhibits expression of uPAR in PC3M cells. PC3M, and PC3MLN4 cells were treated with DBP or DBP-maf (0.001 and 1 $\mu\text{g}/\text{mL}$) and incubated for 24 hours then harvested. RT products (cDNA), identified as uPAR1, 2, and 3, were amplified by real-time quantitative PCR. $p < 0.05$.
doi:10.1371/journal.pone.0013428.g005

tumor cells [28–30] and with drug resistance [31] (for review see [32]). RT-PCR was performed on all cell types using three known isoforms of uPAR precursors, including the soluble receptor, isoform 2 (see Methods). As shown in Figure 4D, reduced RNA expression was observed for LNCaPLN3 in the presence of DBP-maf at both 0.001 and 1 $\mu\text{g}/\text{mL}$ of DBP-maf for both uPAR1 and uPAR2 isoforms. The isoforms uPAR2 and uPAR3 showed similar reduction of expression with DBP-maf treatment of PC3M cells. Interestingly, although PC3MLN4 cells showed no significant response to DBP-maf (Figure 5D), there was a statistically significant reduction of uPAR2 with DBP at 1 $\mu\text{g}/\text{mL}$. In almost all conditions examined, after 72 hours uPAR levels had returned to control values (data not shown). The peptide was also tested using the cell line (LNCaPLN3), which was active in all assays and (PC3M), which was active in migration but not in proliferation. They showed no significant change in any of the uPAR isoform

levels with the peptide (Figure 6A and 6B). The tumor lines were then tested to observe the effect of DBP-maf on uPAR expression at the protein level. Cells were harvested after 24 hours and lysates were immunoblotted. As shown in Figure 4, DBP-maf did not inhibit the expression of uPAR in any cell lines after 24 hours (Figure 7A), however a reduction was seen after 72 hours only in the LNCaPLN3 cells (Figure 7B). DBP treated cells showed no significant change in receptor expression.

Discussion

The vitamin D binding protein DBP-maf, has been shown to inhibit both tumor and blood vessel growth. We demonstrate here, for the first time, a direct effect on prostate cancer cells in the absence of macrophages, increasing the scope of DBP-maf beyond its already demonstrated antiangiogenic and immuno-modulatory

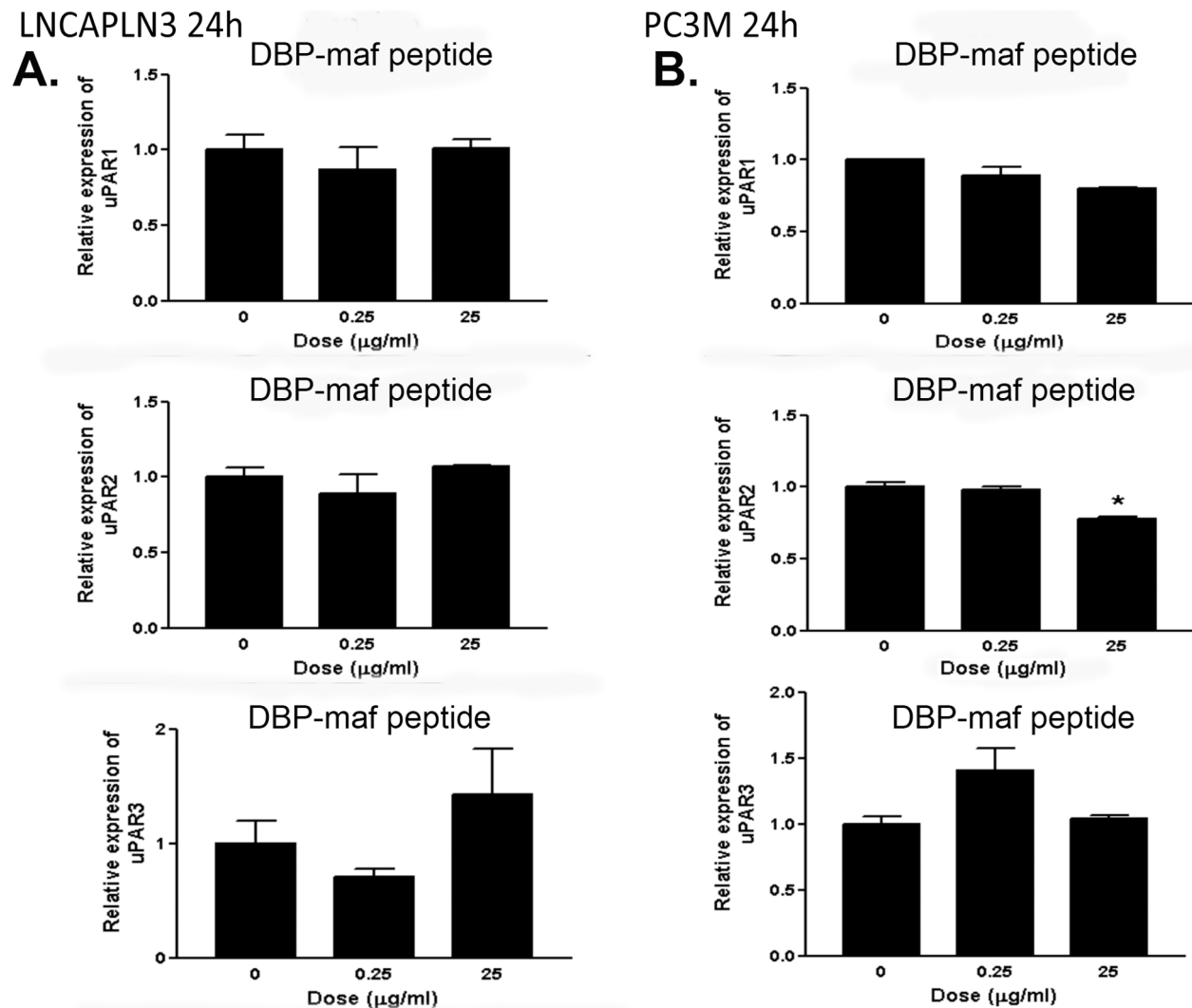


Figure 6. DBP-maf peptide does not inhibit expression of uPAR in PC3M or LNCaPLN3 cells. LNCaPLN3 (A) and PC3M cells (B) were treated with DBP or DBP-maf (0.001 and 1 $\mu\text{g}/\text{mL}$) and incubated for 24 hours then harvested. RT products (cDNA), identified as uPAR1, 2, and 3, were amplified by real-time quantitative PCR. $p < 0.05$.
doi:10.1371/journal.pone.0013428.g006

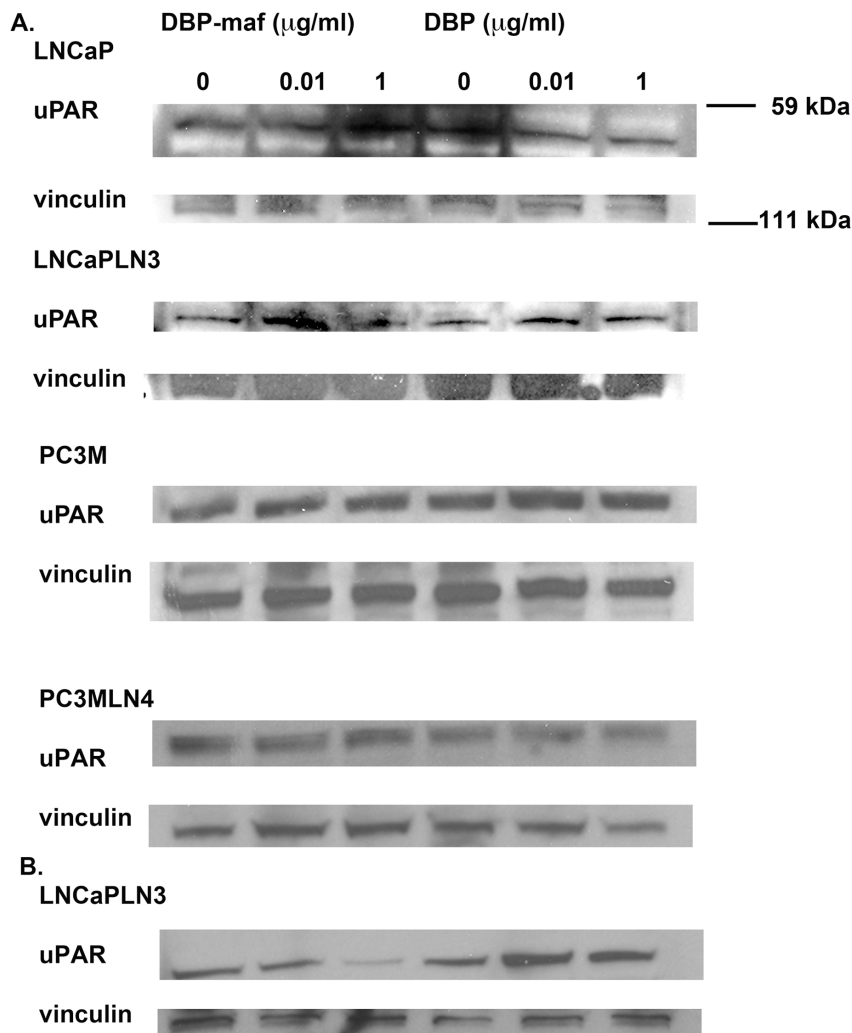


Figure 7. DBP-maf inhibits protein expression of uPAR. LNCaP, LNCaPLN3, PC3M, and PC3MLN4 were treated with DBP or DBP-maf and incubated for 24 hours (A) then harvested and immunoblotted using an anti-uPAR antibody. LNCaPLN3 cells at 72 hours (B). $p < 0.05$. doi:10.1371/journal.pone.0013428.g007

characteristics. DBP-maf demonstrated potent inhibition of both proliferation and migration of tumor cells.

It is interesting to note the response of the parental PC3M cells compared to the metastatic clone. PC3M cells did not show sensitivity to DBP-maf in proliferation assays, but their migration was inhibited by DBP-maf. There was a reduction of uPAR expression as detected by RT-PCR, but protein expression of the uPAR isotypes tested appeared unchanged. Finally, DBP-maf caused a slight increase in loss due to apoptosis or necrosis (Table 1), whereas the other cell lines demonstrated decreased apoptosis or necrosis. The metastatic clone PC3MLN4 exhibited a potent response to treatment in both proliferation and migration even at low dose (1 ng/mL) but showed no reduction in uPAR expression either at the mRNA or protein level. Additional proliferation studies were done to determine whether the discrepancy in response between the parental and metastatic clone was due to a general change in cell sensitivity. Calcitriol showed potent and consistent inhibition among all cell types within identical dose ranges. PC3M and PC3MLN4 cells were also tested with etoposide and their responses were similar (data not shown), suggesting that the metastatic clone gained sensitivity to DBP-maf that the parental line does not demonstrate. The effect of DBP-maf on PC3MLN4

cells caused the highest significant reduction rates of proliferation and migration compared to the other cell lines. Studies showed all tumor cell lines to be sensitive to DBP-maf in migration assays.

Our observations in culturing of these cells were that the metastatic clones of both PC3M and LNCaP were more sensitive to trypsinization than the parental lines. Many factors may regulate the migration of cells and although uPAR is a possible mediator, it may not be the sole mechanism by which DBP-maf inhibits migration. The peptide was effective in migration studies but showed no ability to affect proliferation or uPAR expression. Since the peptide represents only a portion of the protein it does not possess all of the domains of the native DBP-maf, such as the vitamin D binding region. It is possible that the ability to regulate migration and proliferation resides in separate domains of the protein. Although all of the cell lines responded to DBP-maf in one or more of the assays, only LNCaPLN3 demonstrated reduction of the uPAR protein level. It is possible, however, that the antibody does not recognize all isoforms of uPAR.

It is now commonly accepted that the tumor microenvironment, and not just the tumor cell alone, represents an effective target for therapy. In addition to the investigation of anti-tumor effects, the method of delivery of these drugs is being explored.

Bioavailability is a crucial component of any therapeutic strategy. Poor absorption, internalization, short half-life in circulation, and a number of other deficiencies can make a therapy that has shown great promise *in vitro*, ineffective in the clinic. The effective *in vivo* doses for DBP-maf (pg-ng) have tended to be lower than the *in vitro* doses (ng- μ g range) [4,6–10]. Perhaps this is because of multiple mechanisms of its activity. The potential to impact blood vessel growth and tumor cell growth as well as stimulate a potent immune response through macrophage activation is difficult to measure *in toto* using *in vitro* approaches. They do, however, provide a way to characterize these effects individually.

The effect of DBP-maf treatment on uPAR expression in prostate tumor cells was previously unknown. uPAR expression has been correlated with tumor metastasis in a number of tumors [26,28–30,32]. Studies of esophageal tumors showed PAI-1 and uPA were expressed throughout the tumors but not in normal esophageal tissue and that uPAR was expressed at the tumor borders [33,34]. A link between pancreatic cancer and uPA has been demonstrated, which could explain the potent effect of DBP-maf in our previous pancreatic tumor studies [33].

References

- Cooke NE, David EV (1985) Serum vitamin D-binding protein is a third member of the albumin and alpha fetoprotein gene family. *J Clin Invest* 76: 2420–2424.
- Kawakami M, Blum CB, Ramakrishnan R, Dell RB, Goodman DS (1981) Turnover of the plasma binding protein for vitamin D and its metabolites in normal human subjects. *J Clin Endocrinol Metab* 53: 1110–1116.
- Yamamoto N, Naraparaju VR (1996) Vitamin D3-binding protein as a precursor for macrophage activating factor in the inflammation-primed macrophage activation cascade in rats. *Cell Immunol* 170: 161–167.
- Kisker O, Onizuka S, Becker CM, Fannon M, Flynn E, et al. (2003) Vitamin D binding protein-macrophage activating factor (DBP-maf) inhibits angiogenesis and tumor growth in mice. *Neoplasia* 5: 32–40.
- Kanda S, Mochizuki Y, Miyata Y, Kanetake H, Yamamoto N (2002) Effects of vitamin D(3)-binding protein-derived macrophage activating factor (GcMAF) on angiogenesis. *J Natl Cancer Inst* 94: 1311–1319.
- Koga Y, Naraparaju VR, Yamamoto N (1999) Antitumor effect of vitamin D-binding protein-derived macrophage activating factor on Ehrlich ascites tumor-bearing mice. *Proc Soc Exp Biol Med* 220: 20–26.
- Yamamoto N, Suyama H (2008) Immunotherapy for Prostate Cancer with Gc Protein-Derived Macrophage-Activating Factor, GcMAF. *Transl Oncol* 1: 65–72.
- Yamamoto N, Suyama H, Nakazato H, Koga Y (2008) Immunotherapy of metastatic colorectal cancer with vitamin D-binding protein-derived macrophage-activating factor, GcMAF. *Cancer Immunol Immunother* 57: 1007–1016.
- Yamamoto N, Suyama H, Ushijima N (2008) Immunotherapy of metastatic breast cancer patients with vitamin D-binding protein-derived macrophage activating factor (GcMAF). *Int J Cancer* 122: 461–467.
- Yamamoto N, Ushijima N, Koga Y (2009) Immunotherapy of HIV-infected patients with Gc protein-derived macrophage activating factor (GcMAF). *J Med Virol* 81: 16–26.
- Yamamoto N (2006) Pathogenic significance of alpha-N-acetylgalactosaminidase activity found in the envelope glycoprotein gp160 of human immunodeficiency virus Type 1. *AIDS Res Hum Retroviruses* 22: 262–271.
- Helbert MR, L'Age-Stehr J, Mitchison NA (1993) Antigen presentation, loss of immunological memory and AIDS. *Immunol Today* 14: 340–344.
- Yamamoto N, Naraparaju VR, Srinivasula SM (1995) Structural modification of serum vitamin D3-binding protein and immunosuppression in AIDS patients. *AIDS Res Hum Retroviruses* 11: 1373–1378.
- Yamamoto N, Naraparaju VR, Moore M, Brent LH (1997) Deglycosylation of serum vitamin D3-binding protein by alpha-N-acetylgalactosaminidase detected in the plasma of patients with systemic lupus erythematosus. *Clin Immunol Immunopathol* 82: 290–298.
- Mohamad SB, Nagasawa H, Uto Y, Hori H (2002) Tumor cell alpha-N-acetylgalactosaminidase activity and its involvement in GcMAF-related macrophage activation. *Comp Biochem Physiol A Mol Integr Physiol* 132: 1–8.
- Greco M, Mitri MD, Chiriaco F, Leo G, Brienza E, et al. (2009) Serum proteomic profile of cutaneous malignant melanoma and relation to cancer progression: association to tumor derived alpha-N-acetylgalactosaminidase activity. *Cancer Lett* 283: 222–229.
- Yamamoto N (1996) Structural definition of a potent macrophage activating factor derived from vitamin D3-binding protein with adjuvant activity for antibody production. *Mol Immunol* 33: 1157–1164.
- Pettaway CA, Pathak S, Greene G, Ramirez E, Wilson MR, et al. (1996) Selection of highly metastatic variants of different human prostatic carcinomas using orthotopic implantation in nude mice. *Clin Cancer Res* 2: 1627–1636.
- Connolly DT, Knight MB, Harakas NK, Wittwer AJ, Feder J (1986) Determination of the number of endothelial cells in culture using an acid phosphatase assay. *Anal Biochem* 152: 136–140.
- Kisker O, Becker CM, Prox D, Fannon M, D'Amato R, et al. (2001) Continuous administration of endostatin by intraperitoneally implanted osmotic pump improves the efficacy and potency of therapy in a mouse xenograft tumor model. *Cancer Res* 61: 7669–7674.
- Chang LK, Garcia-Cardena G, Farnes F, Fannon M, Chen EJ, et al. (2004) Dose-dependent response of FGF-2 for lymphangiogenesis. *Proc Natl Acad Sci U S A* 101: 11658–11663.
- Trinh L, Noronha SB, Fannon M, Shiloach J (2000) Recovery of mouse endostatin produced by *Pichia pastoris* using expanded bed adsorption. *Bioseparation* 9: 223–230.
- Fannon M, Forsten-Williams K, Nugent MA, Gregory KJ, Chu CL, et al. (2008) Sucrose octasulfate regulates fibroblast growth factor-2 binding, transport, and activity: potential for regulation of tumor growth. *J Cell Physiol* 215: 434–441.
- Takeda A, Baffi JZ, Kleinman ME, Cho WG, Nozaki M, et al. (2009) CCR3 is a target for age-related macular degeneration diagnosis and therapy. *Nature* 460: 225–230.
- Livak KJ, Schmittgen TD (2001) Analysis of relative gene expression data using real-time quantitative PCR and the 2⁻(Delta Delta C(T)) Method. *Methods* 25: 402–408.
- Besch R, Berking C, Kammerbauer C, Degitz K (2007) Inhibition of urokinase-type plasminogen activator receptor induces apoptosis in melanoma cells by activation of p53. *Cell Death Differ* 14: 818–829.
- Schneider GB, Grecco KJ, Safadi FF, Popoff SN (2003) The anabolic effects of vitamin D-binding protein-macrophage activating factor (DBP-MAF) and a novel small peptide on bone. *Crit Rev Eukaryot Gene Expr* 13: 277–284.
- Dong Z, Saliganan AD, Meng H, Nabha SM, Sabbota AL, et al. (2008) Prostate cancer cell-derived urokinase-type plasminogen activator contributes to intraosseous tumor growth and bone turnover. *Neoplasia* 10: 439–449.
- Serrati S, Margheri F, Fibbi G, Di Cara G, Minafra L, et al. (2008) Endothelial cells and normal breast epithelial cells enhance invasion of breast carcinoma cells by CXCR-4-dependent up-regulation of urokinase-type plasminogen activator receptor (uPAR, CD87) expression. *J Pathol* 214: 545–554.
- Dass CR, Nadesapillai AP, Robin D, Howard ML, Fisher JL, et al. (2005) Downregulation of uPAR confirms link in growth and metastasis of osteosarcoma. *Clin Exp Metastasis* 22: 643–652.
- Gutova M, Najbauer J, Gevorgyan A, Metz MZ, Weng Y, et al. (2007) Identification of uPAR-positive chemoresistant cells in small cell lung cancer. *PLoS One* 2: e243.
- Dass K, Ahmad A, Azmi AS, Sarkar SH, Sarkar FH (2008) Evolving role of uPA/uPAR system in human cancers. *Cancer Treat Rev* 34: 122–136.
- Bauer TW, Fan F, Liu W, Johnson M, Parikh NU, et al. (2005) Insulinlike growth factor-I-mediated migration and invasion of human colon carcinoma cells requires activation of c-Met and urokinase plasminogen activator receptor. *Ann Surg* 241: 748–756; discussion 756–748.
- Bauer TW, Liu W, Fan F, Camp ER, Yang A, et al. (2005) Targeting of urokinase plasminogen activator receptor in human pancreatic carcinoma cells

Acknowledgments

The authors would like to thank Jayakrishna Ambati and Royce Mohan for their helpful discussions.

Author Contributions

Conceived and designed the experiments: MF. Performed the experiments: KJG BZ SD JW WJ. Analyzed the data: SD BH SPS MF. Contributed reagents/materials/analysis tools: DB. Wrote the paper: MF.

- inhibits c-Met- and insulin-like growth factor-I receptor-mediated migration and invasion and orthotopic tumor growth in mice. *Cancer Res* 65: 7775–7781.
35. Blasi F, Carmeliet P (2002) uPAR: a versatile signalling orchestrator. *Nat Rev Mol Cell Biol* 3: 932–943.
36. Bajou K, Maillard C, Jost M, Lijnen RH, Gils A, et al. (2004) Host-derived plasminogen activator inhibitor-1 (PAI-1) concentration is critical for in vivo tumoral angiogenesis and growth. *Oncogene* 23: 6986–6990.
37. Bajou K, Masson V, Gerard RD, Schmitt PM, Albert V, et al. (2001) The plasminogen activator inhibitor PAI-1 controls in vivo tumor vascularization by interaction with proteases, not vitronectin. Implications for antiangiogenic strategies. *J Cell Biol* 152: 777–784.