



# Left Atrial Scar Assessment Using Imaging With Isotropic Spatial Resolution and Compressed Sensing

## Citation

Akcakaya, Mehmet, Susie Hong, Raymond H. Chan, Tamer A. Basha, Mehdi H. Moghari, Kraig V. Kissinger, Beth Goddu, Mark E. Josephson, Warren J. Manning, and Reza Nezafat. 2012. Left atrial scar assessment using imaging with isotropic spatial resolution and compressed sensing. *Journal of Cardiovascular Magnetic Resonance* 14(Suppl 1): 08.

## Published Version

doi:10.1186/1532-429X-14-S1-08

## Permanent link

<http://nrs.harvard.edu/urn-3:HUL.InstRepos:10246882>

## Terms of Use

This article was downloaded from Harvard University's DASH repository, and is made available under the terms and conditions applicable to Other Posted Material, as set forth at <http://nrs.harvard.edu/urn-3:HUL.InstRepos:dash.current.terms-of-use#LAA>

## Share Your Story

The Harvard community has made this article openly available.  
Please share how this access benefits you. [Submit a story](#).

[Accessibility](#)

ORAL PRESENTATION

Open Access

# Left Atrial scar assessment using imaging with isotropic spatial resolution and compressed sensing

Mehmet Akcakaya<sup>1\*</sup>, Susie Hong<sup>1</sup>, Raymond H Chan<sup>1</sup>, Tamer A Basha<sup>1</sup>, Mehdi H Moghari<sup>1</sup>, Kraig V Kissinger<sup>1</sup>, Beth Goddu<sup>1</sup>, Mark E Josephson<sup>1</sup>, Warren J Manning<sup>1,2</sup>, Reza Nezafat<sup>1</sup>

From 15th Annual SCMR Scientific Sessions  
Orlando, FL, USA. 2-5 February 2012

## Summary

We assess left atrial scar using late gadolinium enhancement (LGE) with isotropic spatial resolution of  $1.4\text{mm}^3$  by using highly accelerated LOST [1] reconstruction.

## Background

Atrial fibrillation (AF) is the most common sustained cardiac arrhythmia [2]. Pulmonary vein isolation (PVI) using radiofrequency (RF)-ablation is the leading treatment for AF. Recently, LGE imaging of the LA has been used to identify atrial wall scar due to RF-ablation [3]. However, current LGE methods have limited spatial resolution that substantially impact assessment of scar in the complex geometry of PVs and LA. In this study, we sought to utilize prospective random k-space sampling and LOST [1] for accelerated LGE imaging, where reduction in imaging time was traded-off for improved isotropic spatial-resolution.

## Methods

23 patients with history of AF (6 females,  $58.1 \pm 9.6$  years, 9 pre-PVI, 2 with history of PVI; 8 post-PVI; 3 with both pre and post-PVI) were recruited for this study. LGE images were acquired 10-to-20 minutes after bolus infusion of  $0.2 \text{ mmol/kg}$  Gd-DTPA. Free-breathing ECG-triggered navigator-gated inversion-recovery GRE sequences were used for all acquisitions ( $\text{TR/TE}/\alpha = 5.2/2.6\text{ms}/25^\circ$ ,  $\text{FOV} = 320 \times 320 \times 100\text{mm}^3$ ). The PV inflow artifact reduction technique in [4] was also utilized. For each patient, a standard non-isotropic 3D LGE scan ( $1.4 \times 1.4 \times 4.0\text{mm}^3$ ) and a 3-fold-accelerated high-

resolution 3D LGE scan ( $1.4^3 \text{ mm}^3$ ) were performed, with randomized acquisition order. For random undersampling, central k-space ( $45 \times 35$  in ky-kz) was fully-sampled, edges randomly discarded, and phase reordering performed as in [5]. Acquisition times were  $\sim 4$  mins assuming 100% scan-efficiency at 70bpm for both scans.

All undersampled data were reconstructed offline using LOST [1]. LOST-reconstructed high-resolution, and standard LGE images were scored by two blinded readers for diagnostic value, presence of LGE(yes/no); and image quality in axial(Ax), coronal(Co) and sagittal (Sa) views (1=poor,4=excellent).

## Results

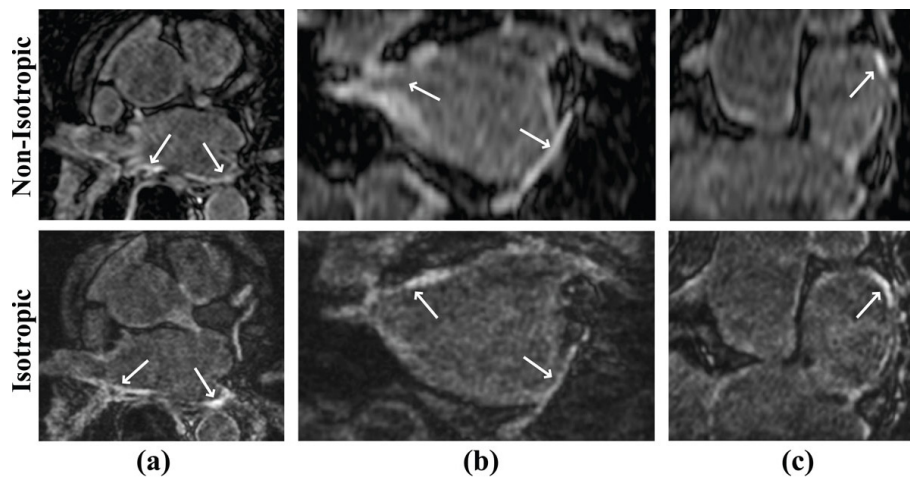
Three cases were declared non-diagnostic due to contrast-washout and imperfect inversion-time. LGE was visually present in 14 of the remaining 20 patients based on standard-LGE images, and 12 based on LOST-reconstructed ones (disagreement on one pre- and one post-PVI patient). Figure 1 and 2 show comparisons of isotropic vs. non-isotropic LGE images in two patients. Image scores for LOST-LGE:  $Ax = 2.90 \pm 0.70$ ,  $Sa = 3.33 \pm 0.66$ ,  $Co = 3.00 \pm 0.63$ ; and standard LGE:  $Ax = 3.76 \pm 0.54$ ,  $Sa = 2.48 \pm 0.60$ ,  $Co = 2.24 \pm 0.44$ , where differences were significant in all views.

## Conclusions

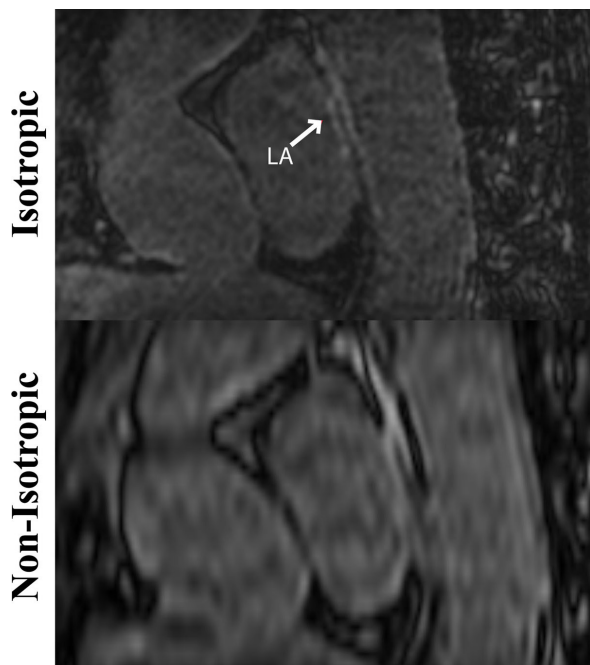
LOST allows isotropic spatial-resolution in LGE for assessment of LA and PV scar. Isotropic resolution allows reformatting LGE images in any orientation and facilitates assessment of scar. Further clinical study is needed to assess if the improved spatial resolution will impact the diagnostic interpretation of data.

<sup>1</sup>Medicine, Beth Israel Deaconess Medical Center, Harvard Medical School, Boston, MA, USA

Full list of author information is available at the end of the article



**Figure 1** Axial (a), coronal (b) and reformatted (c) LA LGE images from a patient who underwent PVI. LOST-reconstructed images from the isotropic resolution scan with acceleration rate 3 enable better visualization from different orientations, whereas the standard non-isotropic LGE images suffer from blurring in sagittal and coronal views.



**Figure 2** A sagittal view showing enhancement of the LA and the descending aorta in a patient who underwent PVI. The isotropic resolution of the LOST-reconstructed images from the accelerated scan allows clear visualization of separate regions of enhancement, whereas the non-isotropic resolution exhibits blurring of these regions.

## Funding

NIH R01EB008743-01A2.

## Author details

<sup>1</sup>Medicine, Beth Israel Deaconess Medical Center, Harvard Medical School, Boston, MA, USA. <sup>2</sup>Radiology, Beth Israel Deaconess Medical Center, Harvard Medical School, Boston, MA, USA.

Published: 1 February 2012

## References

1. Akcakaya : *MRM*. 2011.
2. Lloyd-Jones : *Circulation*. 2010.
3. Peters : *Radiology*. 2007.
4. Hedjazi : *MRM*. 2011.
5. Basha : *ISMRM*. 2011.

doi:10.1186/1532-429X-14-S1-O8

Cite this article as: Akcakaya et al.: Left Atrial scar assessment using imaging with isotropic spatial resolution and compressed sensing. *Journal of Cardiovascular Magnetic Resonance* 2012 **14**(Suppl 1):O8.

**Submit your next manuscript to BioMed Central and take full advantage of:**

- Convenient online submission
- Thorough peer review
- No space constraints or color figure charges
- Immediate publication on acceptance
- Inclusion in PubMed, CAS, Scopus and Google Scholar
- Research which is freely available for redistribution

Submit your manuscript at  
www.biomedcentral.com/submit

 **BioMed Central**