



# Left Ventricular Remodeling Following Myocardial Infarction Revealed with a Quantitative Diffusion MRI Tractography Framework

## Citation

Mekkaoui, Choukri, Shuning Huang, Guangping Dai, Timothy G. Reese, Aravinda Thiagalingam, Pal Maurovich-Horvat, Jeremy Ruskin, Udo Hoffmann, Marcel P. Jackowski, and David E. Sosnovik. 2012. Left ventricular remodeling following myocardial infarction revealed with a quantitative diffusion MRI tractography framework. *Journal of Cardiovascular Magnetic Resonance* 14(Suppl. 1): P35.

## Published Version

doi:10.1186/1532-429X-14-S1-P35

## Permanent link

<http://nrs.harvard.edu/urn-3:HUL.InstRepos:10318203>

## Terms of Use

This article was downloaded from Harvard University's DASH repository, and is made available under the terms and conditions applicable to Other Posted Material, as set forth at <http://nrs.harvard.edu/urn-3:HUL.InstRepos:dash.current.terms-of-use#LAA>

## Share Your Story

The Harvard community has made this article openly available. Please share how this access benefits you. [Submit a story](#).

[Accessibility](#)

POSTER PRESENTATION

Open Access

# Left ventricular remodeling following myocardial infarction revealed with a quantitative diffusion MRI tractography framework

Choukri Mekkaoui<sup>1,2\*</sup>, Shuning Huang<sup>1,2</sup>, Guangping Dai<sup>1,2</sup>, Timothy G Reese<sup>1,2</sup>, Aravinda Thiagalingam<sup>3</sup>, Pal Maurovich-Horvat<sup>2</sup>, Jeremy Ruskin<sup>3</sup>, Udo Hoffmann<sup>2</sup>, Marcel P Jackowski<sup>4</sup>, David E Sosnovik<sup>1,3</sup>

From 15th Annual SCMR Scientific Sessions  
Orlando, FL, USA. 2-5 February 2012

## Summary

A cardiac-tailored framework for 3D Diffusion Tensor MRI tractography is developed and used to characterize myofiber architecture in normal and remodeled myocardium. We show that myofibers in the subepicardium of the remote infarct zone become less oblique (more circumferential) as the heart dilates and remodels. This fiber realignment may play an important role in the loss of contractile function in the remote zone over time.

## Background

Large infarctions cause the left ventricle (LV) to dilate and remodel, ultimately leading to a global decrease in LV function. While the impact of infarction on fiber architecture in the infarct zone is well understood, the impact of remodeling on fiber architecture in the remote zone is not. Diffusion Tensor Imaging (DTI) has contributed greatly to the study of cardiac structure and organization, but the majority of these studies employed 2D datasets [1,2]. Here we aim to characterize fiber architecture in the remote zone of remodeled hearts using a novel 3D cardiac-tailored diffusion MRI tractography framework that allows fibers in the entire heart to be evaluated as continuous entities.

## Methods

Excised human (n=5) and sheep (n=5) hearts were studied. Large anteroseptal infarctions were produced in the sheep 3 months prior to imaging. DTI of the hearts was performed on a 3T scanner (Trio, Siemens) using 6 gradient-encoding directions, b-value=2000s/mm<sup>2</sup>;

voxel-size=2x2x2mm<sup>3</sup>; TR/TE=8430/96ms. Fiber tracking was performed with a fourth-order Runge-Kutta approach. Myofibers were classified by their median helix angle (HA) and limited in length to half the LV circumference. Histograms of fiber HA were used to compare myofiber architecture in normal and remodeled myocardium.

## Results

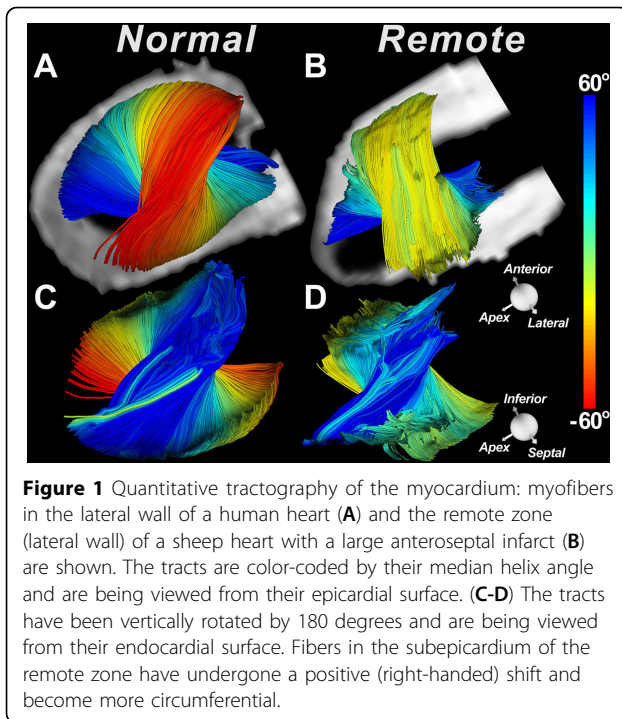
DTI tractograms in the lateral wall of a normal human heart (Figure 1A,1C) and sheep heart with a large anteroseptal infarct (Figure 1B,1D) are shown. The tracts are being viewed from their epicardial (Figure 1A,1B) and endocardial surfaces (Figure 1C,1D), respectively. Profound thinning of the infarct and dilation/remodeling of the LV is seen in the sheep heart. LV remodeling did not significantly affect fiber organization in the subendocardium. However, in the sheep with large infarcts, myofibers in the subepicardium of the remote zone consistently underwent a rightward (more circumferential) rotation. This was confirmed by a reduction in HA variance (Figure 2A) and in the HA variance ratio: ratio of variance between fibers with negative HA and positive (Figure 2B).

## Conclusions

The developed DTI tractographic framework allows myofibers be to classified as continuous entities and shows that fibers in the subepicardium of the remote zone lose their oblique orientation. This microstructural change likely contributes significantly to the loss of function seen in the remote zone over time.

<sup>1</sup>Harvard Medical School, Athinoula A. Martinos Center for Biomedical Imaging, Charlestown, MA, USA

Full list of author information is available at the end of the article

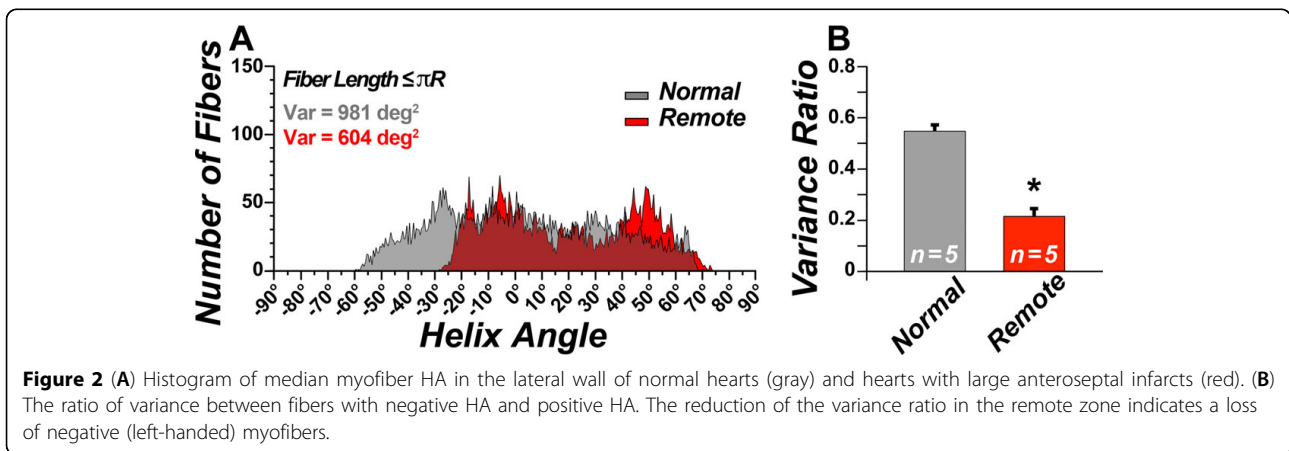


#### References

1. Wu, et al: *Circulation*. 2006.
2. Wu, et al: *JMRI*. 2009.

doi:10.1186/1532-429X-14-S1-P35

Cite this article as: Mekkaoui et al: Left ventricular remodeling following myocardial infarction revealed with a quantitative diffusion MRI tractography framework. *Journal of Cardiovascular Magnetic Resonance* 2012 **14**(Suppl 1):P35.



#### Funding

R01 HL093038 (Sosnovik), NCR P41RR14075 (Martinos Center) and MGH-ECOR (Mekkaoui).

#### Author details

<sup>1</sup>Harvard Medical School, Athinoula A. Martinos Center for Biomedical Imaging, Charlestown, MA, USA. <sup>2</sup>Radiology, Massachusetts General Hospital, Harvard Medical School, Boston, MA, USA. <sup>3</sup>Cardiology Division, Massachusetts General Hospital, Harvard Medical School, Boston, MA, USA. <sup>4</sup>Computer Science, University of São Paulo, Institute of Mathematics and Statistics, São Paulo, Brazil.

Published: 1 February 2012

Submit your next manuscript to BioMed Central and take full advantage of:

- Convenient online submission
- Thorough peer review
- No space constraints or color figure charges
- Immediate publication on acceptance
- Inclusion in PubMed, CAS, Scopus and Google Scholar
- Research which is freely available for redistribution

Submit your manuscript at  
[www.biomedcentral.com/submit](http://www.biomedcentral.com/submit)

