



TERT promoter mutations are highly recurrent in SHH subgroup medulloblastoma

Citation

Remke, M., V. Ramaswamy, J. Peacock, D. J. H. Shih, C. Koelsche, P. A. Northcott, N. Hill, et al. 2013. "TERT promoter mutations are highly recurrent in SHH subgroup medulloblastoma." *Acta Neuropathologica* 126 (1): 917-929. doi:10.1007/s00401-013-1198-2. <http://dx.doi.org/10.1007/s00401-013-1198-2>.

Published Version

doi:10.1007/s00401-013-1198-2

Permanent link

<http://nrs.harvard.edu/urn-3:HUL.InstRepos:11879110>

Terms of Use

This article was downloaded from Harvard University's DASH repository, and is made available under the terms and conditions applicable to Other Posted Material, as set forth at <http://nrs.harvard.edu/urn-3:HUL.InstRepos:dash.current.terms-of-use#LAA>

Share Your Story

The Harvard community has made this article openly available.
Please share how this access benefits you. [Submit a story](#).

[Accessibility](#)

***TERT* promoter mutations are highly recurrent in SHH subgroup medulloblastoma**

Marc Remke · Vijay Ramaswamy · John Peacock · David J. H. Shih · Christian Koelsche · Paul A. Northcott · Nadia Hill · Florence M. G. Cavalli · Marcel Kool · Xin Wang · Stephen C. Mack · Mark Barszczyk · A. Sorana Morrissy · Xiaochong Wu · Sameer Agnihotri · Betty Luu · David T. W. Jones · Livia Garzia · Adrian M. Dubuc · Nataliya Zhukova · Robert Vanner · Johan M. Kros · Pim J. French · Erwin G. Van Meir · Rajeev Vibhakar · Karel Zitterbart · Jennifer A. Chan · László Bognár · Almos Klekner · Boleslaw Lach · Shin Jung · Ali G. Saad · Linda M. Liao · Steffen Albrecht · Massimo Zollo · Michael K. Cooper · Reid C. Thompson · Oliver O. Delattre · Franck Bourdeaut · François F. Doz · Miklós Garami · Peter Hauser · Carlos G. Carlotti · Timothy E. Van Meter · Luca Massimi · Daniel Fults · Scott L. Pomeroy · Toshiro Kumabe · Young Shin Ra · Jeffrey R. Leonard · Samer K. Elbabaa · Jaime Mora · Joshua B. Rubin · Yoon-Jae Cho · Roger E. McLendon · Darell D. Bigner · Charles G. Eberhart · Maryam Fouladi · Robert J. Wechsler-Reya · Claudia C. Faria · Sidney E. Croul · Annie Huang · Eric Bouffet · Cynthia E. Hawkins · Peter B. Dirks · William A. Weiss · Ulrich Schüller · Ian F. Pollack · Stefan Rutkowski · David Meyronet · Anne Jouvét · Michelle Fèvre-Montange · Nada Jabado · Marta Perek-Polnik · Wiesława A. Grajkowska · Seung-Ki Kim · James T. Rutka · David Malkin · Uri Tabori · Stefan M. Pfister · Andrey Korshunov · Andreas von Deimling · Michael D. Taylor

Received: 2 September 2013 / Accepted: 15 October 2013 / Published online: 31 October 2013
© The Author(s) 2013. This article is published with open access at Springerlink.com

Abstract *Telomerase reverse transcriptase (TERT)* promoter mutations were recently shown to drive telomerase activity in various cancer types, including medulloblastoma. However, the clinical and biological implications of *TERT* mutations in medulloblastoma have not been described. Hence, we sought to describe these mutations and their impact in a subgroup-specific manner. We

analyzed the *TERT* promoter by direct sequencing and genotyping in 466 medulloblastomas. The mutational distributions were determined according to subgroup affiliation, demographics, and clinical, prognostic, and molecular features. Integrated genomics approaches were used to identify specific somatic copy number alterations in *TERT* promoter-mutated and wild-type tumors. Overall, *TERT* promoter mutations were identified in 21 % of medulloblastomas. Strikingly, the highest frequencies of

Electronic supplementary material The online version of this article (doi:10.1007/s00401-013-1198-2) contains supplementary material, which is available to authorized users.

M. Remke · V. Ramaswamy · J. Peacock · D. J. H. Shih · N. Hill · F. M. G. Cavalli · X. Wang · S. C. Mack · M. Barszczyk · A. S. Morrissy · X. Wu · S. Agnihotri · B. Luu · L. Garzia · A. M. Dubuc · N. Zhukova · R. Vanner · M. D. Taylor
The Arthur and Sonia Labatt Brain Tumour Research Centre, The Hospital for Sick Children, Toronto, ON, Canada

M. Remke · V. Ramaswamy · J. Peacock · D. J. H. Shih · N. Hill · F. M. G. Cavalli · X. Wang · S. C. Mack · A. S. Morrissy · X. Wu · B. Luu · L. Garzia · A. M. Dubuc · M. D. Taylor
Developmental and Stem Cell Biology Program, The Hospital for Sick Children, Toronto, ON, Canada

M. Remke · V. Ramaswamy · J. Peacock · D. J. H. Shih · X. Wang · S. C. Mack · A. M. Dubuc · S. E. Croul · M. D. Taylor (✉)
Department of Laboratory Medicine and Pathobiology, University of Toronto, Toronto, ON, Canada
e-mail: mdtaylor@sickkids.ca

C. Koelsche · A. Korshunov · A. von Deimling (✉)
Department of Neuropathology, University Hospital Heidelberg, Heidelberg, Germany
e-mail: andreas.vondeimling@med.uni-heidelberg.de

C. Koelsche · A. Korshunov · A. von Deimling
Clinical Cooperation Unit Neuropathology, German Cancer Research Center (DKFZ), Heidelberg, Germany

P. A. Northcott · M. Kool · D. T. W. Jones · S. M. Pfister
Division of Pediatric Neurooncology, German Cancer Research Center (DKFZ), Heidelberg, Germany

J. M. Kros
Department of Pathology, Erasmus Medical Center, Rotterdam, The Netherlands

P. J. French
Department of Neurology, Erasmus Medical Center, Rotterdam, The Netherlands

TERT mutations were observed in SHH (83 %; 55/66) and WNT (31 %; 4/13) medulloblastomas derived from adult patients. Group 3 and Group 4 harbored this alteration in <5 % of cases and showed no association with increased patient age. The prognostic implications of these mutations were highly subgroup-specific. *TERT* mutations identified a subset with good and poor prognosis in SHH and Group 4 tumors, respectively. Monosomy 6 was mostly restricted to WNT tumors without *TERT* mutations. Hallmark SHH focal copy number aberrations and chromosome 10q deletion were mutually exclusive with *TERT* mutations within SHH tumors. *TERT* promoter mutations are the most common recurrent somatic point mutation in medulloblastoma, and are very highly enriched in adult SHH and WNT tumors. *TERT* mutations define a subset of SHH medulloblastoma with distinct demographics, cytogenetics, and outcomes.

Keywords *TERT* promoter mutations · SHH pathway · Adult · Medulloblastoma

E. G. Van Meir
Departments of Neurosurgery and Hematology and Medical Oncology, School of Medicine and Winship Cancer Institute, Emory University, Atlanta, GA, USA

R. Vibhakkar
Department of Pediatrics, University of Colorado Denver, Aurora, CO, USA

K. Zitterbart
Department of Pediatric Oncology, School of Medicine, Masaryk University and University Hospital Brno, Brno, Czech Republic

J. A. Chan
Department of Pathology and Laboratory Medicine, University of Calgary, Calgary, AB, Canada

L. Bognár · A. Klekner
Department of Neurosurgery, Medical and Health Science Centre, University of Debrecen, Debrecen, Hungary

B. Lach
Division of Anatomical Pathology, Department of Pathology and Molecular Medicine, McMaster University, Hamilton, ON, Canada

S. Jung
Department of Neurosurgery, Chonnam National University Research Institute of Medical Sciences, Chonnam National University Hwasun Hospital and Medical School, Chonnam, South Korea

A. G. Saad
Department of Pathology, University of Arkansas for Medical Sciences, Little Rock, AR, USA

Introduction

Medulloblastoma is a highly malignant embryonal brain tumor located in the posterior fossa [6, 29, 33, 35]. While this tumor comprises the most common malignant brain tumor in children, it only accounts for approximately 1 % of primary CNS tumors in adults [18, 20]. The current consensus recognizes four core molecular subgroups (WNT, SHH, Group 3, and Group 4) with distinct molecular, demographic, clinicopathological, and prognostic characteristics [5, 15, 16, 26, 27, 37, 38, 41, 42]. The defining features of medulloblastoma subgroups differ dramatically according to age at diagnosis [15, 27, 41]. Specifically, Group 3 tumors are largely confined to non-adults, SHH tumors are most frequent in infants and adults, while WNT and Group 4 medulloblastomas are mostly observed in pediatric cohorts [15, 24, 27, 38, 41]. Particularly within SHH tumors, age-associated heterogeneity was observed regarding the transcriptional characteristics, somatic copy number alterations (SCNA), and the prognostic implications of biomarkers [15, 18, 38, 40]. Delineation of tumorigenic features characteristic for these age-related

L. M. Liao
Department of Neurosurgery, David Geffen School of Medicine at UCLA, Los Angeles, CA, USA

S. Albrecht
Department of Pathology, McGill University, Montreal, QC, Canada

M. Zollo
Dipartimento di Medicina Molecolare e Biotecnologie Mediche, University of Naples, Naples, Italy

M. Zollo
CEINGE Biotecnologie Avanzate, Naples, Italy

M. K. Cooper
Department of Neurology, Vanderbilt Medical Center, Nashville, TN, USA

R. C. Thompson
Department of Neurological Surgery, Vanderbilt Medical Center, Nashville, TN, USA

O. O. Delattre · F. Bourdeaut
Laboratoire de Génétique et Biologie des Cancers, Institut Curie, Paris, France

F. F. Doz
Department of Pediatric Oncology, Institut Curie and University Paris Descartes, Sorbonne Paris Cité, Paris, France

M. Garami · P. Hauser
2nd Department of Pediatrics, Semmelweis University, Budapest, Hungary

differences, particularly within SHH tumors, are highly desirable to understand these clear biological and prognostic discrepancies.

Telomere maintenance is fundamentally important to normal self-renewing stem cells and cancer cells [3, 7, 9, 14, 22]. It has been suggested that tumors derived from cell populations with low self-renewal capacity generally rely on alterations that restore telomerase activity, while epigenetic mechanisms maintain telomerase activity in tumor types derived from self-renewing stem cells [13]. The identification of recurrent *telomerase reverse transcriptase* (*TERT*) promoter mutations in 21 % of 91 medulloblastomas [13] is intriguing, since other mechanisms converging on increased telomerase activity including alternative lengthening of telomeres (ALT) [8] or mutations affecting the *ATRX/DAXX* complex are excessively uncommon in medulloblastoma [12, 25, 32, 34, 39]. Although *TERT* mutations have been reported in several cancers [2, 10, 11, 13, 19, 43], their putative association with distinct biological behavior and clinical or even prognostic characteristics has not been comprehensively studied. The initial analyses

of *TERT* mutations in medulloblastoma [12] mainly catalogued the mutational frequency rather than correlating the molecular and clinical features of these mutations in a subgroup-specific manner.

In this study, we analyzed a representative set of 466 medulloblastomas for *TERT* promoter mutations. Subsequently, we correlated the mutational distribution with clinicopathological features, outcome, and molecular characteristics in a subgroup-specific manner. We demonstrate that *TERT* promoter mutations comprise the most recurrent mutation in adult SHH tumors identified to date and potentially define distinct prognostic subgroups in SHH and Group 4 medulloblastoma patients.

Materials and methods

Tumor material and patient characteristics

All tissues and clinicopathological information were serially collected in accordance with institutional review boards

C. G. Carlotti

Department of Surgery and Anatomy, Faculty of Medicine of Ribeirão Preto, Universidade de São Paulo, São Paulo, Brazil

T. E. Van Meter

Pediatric Hematology-Oncology, School of Medicine, Virginia Commonwealth University, Richmond, VA, USA

L. Massimi

Pediatric Neurosurgery, Catholic University Medical School, Rome, Italy

D. Fufts

Department of Neurosurgery, Clinical Neurosciences Center, University of Utah, Salt Lake City, UT, USA

S. L. Pomeroy

Department of Neurology, Harvard Medical School, Children's Hospital Boston, Boston, ME, USA

T. Kumabe

Department of Neurosurgery, Tohoku University Graduate School of Medicine, Sendai, Japan

Y. S. Ra

Department of Neurosurgery, Asan Medical Center, University of Ulsan, Seoul, South Korea

J. R. Leonard

Division of Pediatric Neurosurgery, Department of Neurosurgery, Washington University School of Medicine, St. Louis Children's Hospital, St. Louis, MO, USA

S. K. Elbabaa

Division of Pediatric Neurosurgery, Department of Neurological Surgery, Saint Louis University School of Medicine, Saint Louis, MO, USA

J. Mora

Developmental Tumor Biology Laboratory, Hospital Sant Joan de Déu, Barcelona, Spain

J. B. Rubin

Departments of Pediatrics, Anatomy and Neurobiology, Washington University School of Medicine, St. Louis Children's Hospital, St. Louis, MO, USA

Y.-J. Cho

Department of Neurology and Neurological Sciences, Stanford University School of Medicine, Stanford, CA, USA

R. E. McLendon · D. D. Bigner

Department of Pathology, Duke University, Durham, NC, USA

C. G. Eberhart

Departments of Pathology, Ophthalmology and Oncology, John Hopkins University School of Medicine, Baltimore, MD, USA

M. Fouladi

Division of Oncology, Cincinnati Children's Hospital Medical Center, University of Cincinnati, Cincinnati, OH, USA

R. J. Wechsler-Reya

Sanford-Burnham Medical Research Institute, La Jolla, CA, USA

C. C. Faria · P. B. Dirks · J. T. Rutka · M. D. Taylor

Division of Neurosurgery, Department of Surgery, The Hospital for Sick Children and The Arthur and Sonia Labatt Brain Tumour Research Centre, Toronto, ON, Canada

C. C. Faria

Division of Neurosurgery, Hospital de Santa Maria, Centro Hospitalar Lisboa Norte EPE, Lisbon, Portugal

from various contributing centers to this study. Nucleic acid extractions were carried out as previously described [28]. The clinicopathological characteristics of the investigated patient cohort are outlined in Table 1. The median follow-up was 44.06 months (range 0.7–301.5 months).

Gene expression and copy number analysis

Subgroup affiliation was determined using nanoString limited gene expression profiling as previously described [31]. Somatic copy number alterations were assessed on the Affymetrix Single Nucleotide Polymorphism (SNP) 6.0 array platform in 418 of 466 cases to identify SCNAs specific for *TERT* mutant and wild-type tumors. Raw copy number estimates were obtained in dChip, followed by CBS segmentation in R as previously described [30]. Somatic copy number alterations were identified using GISTIC2 [21]. *TERT* expression levels were compared using R2 (www.r2.amc.nl). Differences in expression were tested using one-way ANOVA.

Sanger sequencing

Isolated DNA (25 ng) from all 466 tumors and 7 matched germline samples (25 ng) was amplified by PCR. PCRs contained 1 μ l DNA template, 10 μ M forward (5'-CAG GGC ACG CAC ACC AG-3') and reverse (5'-GTC CTG CCC CTT CAC CTT C-3') *TERT*-specific primers, and

12.5 μ l HotStar Taq Plus Master Mix (Qiagen, Gaithersburg, Maryland, USA) in a 25 μ l total reaction volume. Cycle parameters comprised 95 °C \times 15 min; 28 cycles of 98 °C \times 40 s, 65 °C \times 30 s, 72 °C \times 1 min; 72 °C \times 10 min. PCRs were carried out using the C1000 Thermal Cycler (BioRad, Hercules, CA, USA). PCR products were purified with the PureLink PCR Micro kit (Life Technologies, Burlington, ON, Canada). In all experiments, controls were included in the absence of DNA to rule out contamination by PCR products. Templates for Sanger sequencing were analyzed with forward (5'-CAG CGC TGC CTG AAA CTC-3') and reverse (5'-GTC CTG CCC CTT CAC CTT C-3') sequencing primers using dGTP Big-Dye Terminator v3.0 Cycle Sequencing Ready Reaction Kit (Life Technologies), and 5 % DMSO on the ABI3730XL capillary genetic analyzer (Life Technologies).

Genotyping assay

Two primers (forward primer, 5'-CAG CGC TGC CTG AAA CTC-3'; reverse primer, 5'-GTC CTG CCC CTT CAC CTT C-3') were designed to amplify a 163-bp product encompassing C228T and C250T hotspot mutations in the *TERT* promoter—corresponding to the positions 124 and 146 bp, respectively, upstream of the ATG start site. Two fluorogenic LNA probes were designed with different fluorescent dyes to allow single-tube genotyping. One probe was targeted to the WT sequence (*TERT*

A. Huang · E. Bouffet · D. Malkin · U. Tabori
Division of Haematology and Oncology, Department
of Pediatrics, The Hospital for Sick Children, University
of Toronto, Toronto, ON, Canada

C. E. Hawkins
Department of Pathology, The Hospital for Sick Children,
Toronto, ON, Canada

W. A. Weiss
Department of Neurology, University of California,
San Francisco, San Francisco, CA, USA

U. Schüller
Center for Neuropathology and Prion Research, University
of Munich, Munich, Germany

I. F. Pollack
Department of Neurological Surgery, School of Medicine,
University of Pittsburgh, Pittsburgh, PA, USA

S. Rutkowski
Department of Pediatric Hematology and Oncology, University
Medical Center Hamburg-Eppendorf, Hamburg, Germany

D. Meyronet · A. Jouvét
Neuro-oncology and Neuro-inflammation Team, Inserm U1028,
CNRS UMR 5292, Neuroscience Center, University Lyon 1,
69000 Lyon, France

D. Meyronet · A. Jouvét
Hospices Civils de Lyon, Centre de Pathologie et de
Neuropathologie Est, Lyon 69003, France

M. Fèvre-Montange
Centre de Recherche en Neurosciences, INSERM U1028,
CNRS UMR5292, Université de Lyon, Lyon, France

N. Jabado
Division of Experimental Medicine, McGill University, Montreal,
QC, Canada

M. Perek-Polnik
Department of Oncology, The Children's Memorial Health
Institute, Warsaw, Poland

W. A. Grajkowska
Department of Pathology, The Children's Memorial Health
Institute, Warsaw, Poland

S.-K. Kim
Division of Pediatric Neurosurgery, Department of Neurosurgery,
Seoul National University Children's Hospital, Seoul, Korea

S. M. Pfister
Department of Pediatric Oncology, Hematology, Immunology
and Pulmonology, University Hospital Heidelberg, Heidelberg,
Germany

Table 1 Clinicopathological and molecular characteristics according to *TERT* mutational status

Characteristic	<i>TERT</i> MUT	<i>TERT</i> WT	<i>p</i> value
Age (years)			
Median	22.00	7.08	<0.0001 [#]
Range	0.66–49.00	0.24–56.32	
NA	1	0	
Gender			
Male	56	236	0.47 ^Φ
Female	37	129	
NA	3	5	
Histology			
MBEN	3	8	0.59 [×]
Desmoplastic	10	59	
Classic	46	217	
LC/A	11	38	
NA	26	48	
M-stage			
M0	58	240	0.03 ^Φ
M1-3	12	103	
NA	26	27	
<i>TP53</i> status			
MUT	4	12	0.78 ^Φ
WT	42	97	
NA	50	261	
Subgroup			
WNT	6	47	<0.0001 [×]
SHH	80	133	
Group 3	2	48	
Group 4	8	142	

F female, *LC/A* large cell/anaplastic, *M* male, *MB* medulloblastomal, *MBEN* medulloblastoma with extensive nodularity, *NA* not available (data were excluded from statistical comparison)

Bold values indicate $p < 0.05$

[#] Mann–Whitney *U* test

^Φ Fisher's exact test

[×] Chi-square test

WT, 5'-5HEX-CCC CTC CCG G-3IABkFQ-3'), and one was targeted to either of the two mutations (*TERT* mut, 5'-56FAM-CCC CTT CCG G-3IABkFQ). Primer and probes were custom designed by Integrated DNA Technologies (Coralville, Iowa, USA) using internal SNP design software, and sequence homogeneity was confirmed by comparison to all available sequences on the GenBank database using BLAST (<http://www.ncbi.nlm.nih.gov/BLAST/>). Primers were optimized to avoid for hairpins and homo- and heterodimers. Primers and probes were obtained from Integrated DNA Technologies.

Real-time PCR was performed in 25 μ l reaction mixtures containing 12.5 μ l of TaqMan Universal Master Mix

II with UNG (Applied Biosystems), 900 nM concentrations of each primer, 250 nM *TERT* WT probe, 250 nM *TERT* MUT probe, and 1 μ l (25 ng) of sample DNA. Thermocycling was performed on the StepOnePlus (Applied Biosystems) and consisted of 2 min at 50 °C, 10 min at 95 °C, and 40 cycles of 95 °C for 15 s and 60 °C for 1 min.

Analysis was performed using StepOne Software, version 2.1. Samples were considered mutant if they had CT values of ≤ 39 cycles. Each sample was verified visually by examining the PCR curves generated to eliminate false positives due to aberrant light emission. End-point allelic discrimination genotyping was performed by visually inspecting a plot of the fluorescence from the WT probe versus the MUT probe generated from the post-PCR fluorescence read.

Statistical analysis

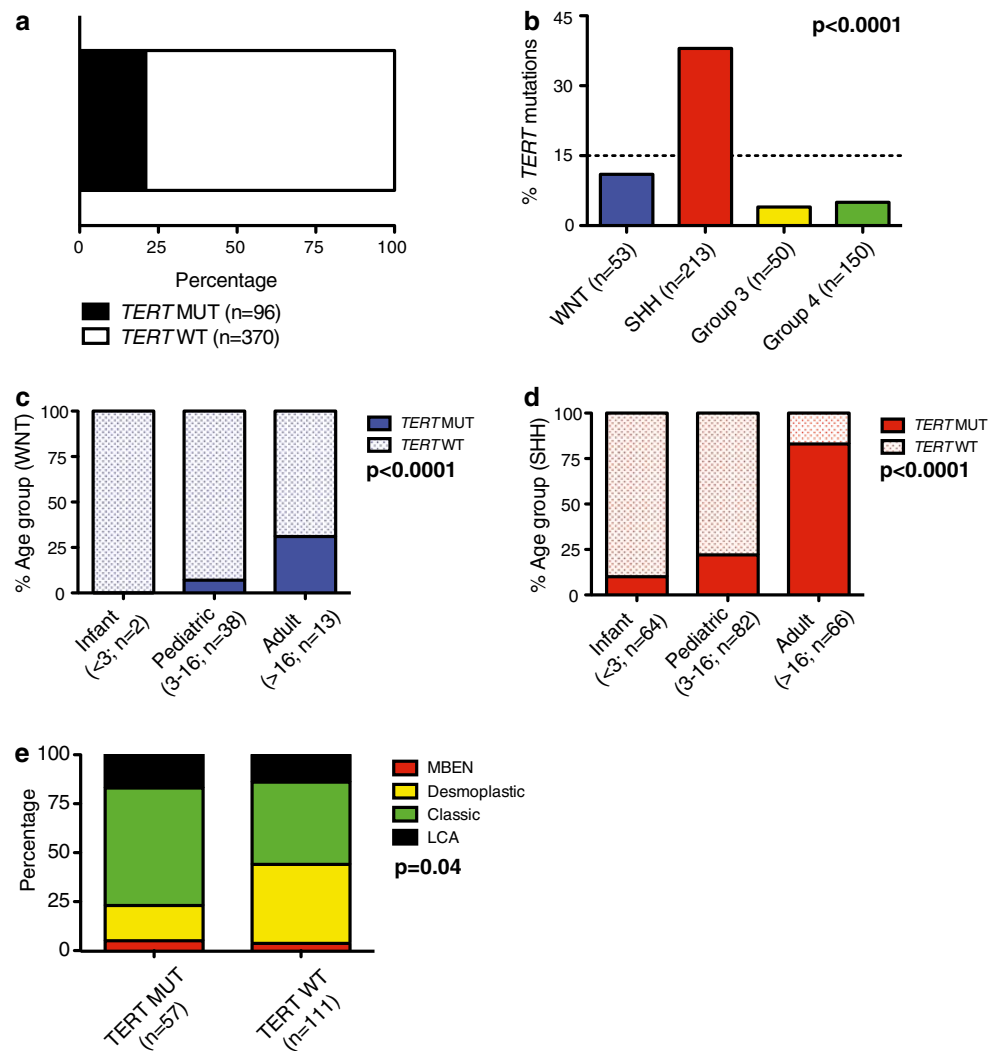
Survival time according to *TERT* mutational status was assessed using the Kaplan–Meier estimate and a log-rank test. Comparisons of binary and categorical patient characteristics between subgroups and cohorts were performed using the two-sided Fisher's exact test or Chi-squared test. Continuous variables were analyzed using the Mann–Whitney *U* test. p values < 0.05 were considered statistically significant. Multivariate Cox proportional hazards regression was used to adjust for additional covariates using the survival R package (v.2.36). All other statistical analyses were performed using StataSE 12 (Stata Corp. College Station, TX, USA) and Graphpad Prism 5 (La Jolla, CA, USA).

Results

Characteristics of *TERT*-mutated medulloblastomas

We performed Sanger sequencing on a clinically well-annotated medulloblastoma cohort ($n = 466$), reflecting the spectrum of demographics and histological subtypes of the disease (Table 1; Supplementary Figure 1A). Our results were verified using a Taqman-based genotyping assay that detects both of the most highly recurrent *TERT* promoter mutations (C228T and C250T). Since both mutational hotspots are located in highly homologous sequences, C228T and C250T mutations result in an identical binding sequence for the mutation-specific probe (CCCGGAAGGGG; Supplementary Figure 1B). A total of 21 % of medulloblastomas harbored *TERT* mutations (Fig. 1a). In line with a previous report, these mutations were enriched in older patients (Table 1; $p < 0.0001$), all mutations were heterozygous, and none of the available matched germline controls displayed this mutation [13]. Interestingly, we found that *TERT*-mutated medulloblastomas present less

Fig. 1 *TERT* promoter-mutated medulloblastomas display distinct demographics, histology, and subgroup affiliation. **a** Bar graph indicating the frequency of *TERT* mutations in 466 primary medulloblastomas. **b** Prevalence of *TERT* mutations according to medulloblastoma subgroups, and within, **c** WNT and **d** SHH subgroups according to age groups. Distribution of histological variants within SHH tumors according to *TERT* mutational status (**e**). *MUT* mutation, *OS* overall survival, *WT* wild-type



frequently with metastatic dissemination at diagnosis compared to *TERT* wild-type tumors ($p = 0.03$).

TERT mutations are specifically enriched in SHH medulloblastomas

In a subgroup-specific analysis, we revealed that *TERT* mutations were significantly enriched in SHH tumors (80/213; 38 %; $p < 0.0001$) compared to WNT (6/53; 11 %) and Group 3 (2/50; 4 %) or Group 4 tumors (8/150; 5 %). *TERT* mutations in both WNT and SHH medulloblastomas were positively correlated with age. *TERT* mutations were significantly enriched in adult patients (Fig. 1c, d, both $p < 0.0001$). Increasing age was not associated with increased mutational frequency in either Group 3 or Group 4 tumors (n.s.). While histopathological features were similar between *TERT*-mutated and wild-type tumors across subgroups, we observed that classic histology was more commonly observed in *TERT* mutant SHH tumors, and

desmoplastic histology in wild-type SHH tumors (Fig. 1e; Table 2; $p = 0.04$), respectively.

Prognostic implications of *TERT* mutations

When medulloblastoma patients across all subgroups were stratified by *TERT* mutational status, we observed no significant differences in survival (Fig. 2a; $p = 0.45$). Further after normalizing the subgroup composition to reported subgroup ratios, a statistical difference was still not revealed (data not shown; $p = 0.36$) [1, 15, 26, 41]. However, when *TERT* mutational status is re-analyzed in a subgroup-specific manner, several important survival associations are observed. *TERT* mutations had no prognostic impact within WNT tumors (Fig. 2b; $p = 0.17$). However, a significant association between *TERT* promoter mutations and outcomes was noted in SHH and Group 4 medulloblastomas. Specifically, the 5-year overall survival of SHH tumors with and without *TERT* mutations was 77.6 ± 7 %

Table 2 Clinicopathological and molecular characteristics of SHH medulloblastoma according to *TERT* mutational status

Characteristic	<i>TERT</i> MUT	<i>TERT</i> WT	<i>p</i> value
Age (years)			
Median	25.00	3.00	<0.0001 [#]
Range	0.66–49.00	0.24–52.00	
NA	1	0	
Gender			
Male	46	80	0.77 ^Φ
Female	31	48	
NA	3	5	
Histology			
MBEN	3	4	0.04 ^χ
Desmoplastic	10	44	
Classic	34	47	
LC/A	10	16	
NA	23	22	
M-stage			
M0	46	87	0.84 ^Φ
M1-3	10	22	
NA	24	24	
<i>TP53</i> status			
MUT	4	8	1 ^Φ
WT	38	71	
NA	38	54	

F female, *LC/A* large cell/anaplastic, *M* male, *MB* medulloblastoma, *MBEN* medulloblastoma with extensive nodularity, *NA* not available (data were excluded from statistical comparison)

Bold values indicate $p < 0.05$

[#] Mann–Whitney *U* test

^Φ Fisher's exact test

^χ Chi-square test

and 64.1 ± 5.1 %, respectively (Fig. 2c; $p = 0.04$). In contrast to the improved prognosis of *TERT* mutant SHH tumors, we observed the inverse pattern in Group 4 tumors where the 5-year overall survival for patients without and with *TERT* mutations was 73.3 ± 4.3 % and 62.5 ± 17.1 % (Fig. 2d; $p = 0.04$). Similar to the unfavorable prognosis of *TERT* mutations in Group 4 tumors, both of the patients with *TERT*-mutated Group 3 tumors died after 7 and 45 months of follow-up, respectively (Supplementary Table 1). Thus, we conclude that *TERT* mutations define distinct prognostic patient cohorts in a subgroup-specific fashion with good prognosis in SHH and poor prognosis in Group 4 medulloblastomas.

Survival analysis restricted to specific age groups

As *TERT* mutations are predominantly observed in non-infant medulloblastomas, we evaluated the prognostic

implications of these promoter mutations across all four medulloblastoma subgroups in an age-dependent manner. *TERT* mutational status across subgroups had no prognostic impact among patients older than 3 years of age at diagnosis (Fig. 3a; $p = 0.59$). Interestingly, the prognostic impact of *TERT* mutation was more pronounced in the non-infant SHH population with a 5-year overall survival of 76.9 ± 7.6 % and 59.3 ± 6.9 % of non-infants with and without *TERT* promoter mutations, respectively (Fig. 3b; $p = 0.019$). These prognostic implications were similar in adult medulloblastoma patients and in the adult SHH subgroup (Supplementary Figure 2). In a subset of 76 SHH cases with known *TP53* mutational status [44], we revealed that *TP53* mutations identify non-infant SHH tumors with a particularly poor prognosis, while in contrast *TERT* mutations identify a subsets with good prognosis (Fig. 3c; $p = 0.047$). Mutations of both *TERT* and *TP53* were observed in 4/12 SHH tumors (Supplementary Table 2). Non-infant Group 4 showed an inverse prognostic association with poor outcome of *TERT*-mutated cases (Fig. 3d; $p = 0.024$). Lastly, we analyzed the overall survival of SHH patients under a multivariate Cox proportional hazards model comprising age at diagnosis, *TERT* mutational status, M-stage, and histology. In addition to the known prognostic significance of M-stage ($p < 0.001$) and histology ($p = 0.02$), we revealed that *TERT* status continued to be associated with good prognosis (HR 0.17, CI 0.04–0.69, $p = 0.01$), independent of other prognostic factors including age at diagnosis ($p = 0.35$).

Distinct somatic copy number alterations of *TERT*-mutated medulloblastomas

To identify additional genetic features associated with these distinct demographic and clinical differences, we evaluated broad and focal copy number alterations according to subgroup affiliation and *TERT* promoter mutations. Notably, only 1/6 (17 %) of *TERT*-mutated WNT tumors harbored monosomy 6, while this alteration is observed in approximately 80 % of *TERT* wild-type medulloblastomas of the WNT subgroup (Fig. 4a; $p = 0.005$). Loss of chromosome 2 and 10q loss were significantly enriched in *TERT* wild-type SHH tumors, while 3q loss was more frequently observed in their *TERT* mutant counterparts (Fig. 4b). Previously described focal alterations characteristic for SHH tumors including amplification of *MYCN/GLI2/CDK6/YAP1/PPM1D*, and deletions targeting *PTCH1/CDKN2A/CDKN2B/PEN* were largely confined to *TERT* wild-type SHH medulloblastomas, while *TERT* mutant SHH (Fig. 5) and Group 4 (Supplementary Figure 3) showed very few focal SCNAs. Consistent with the higher frequency of *TERT* mutations in SHH tumors, we observed increased *TERT* expression in the SHH subgroup compared to Group

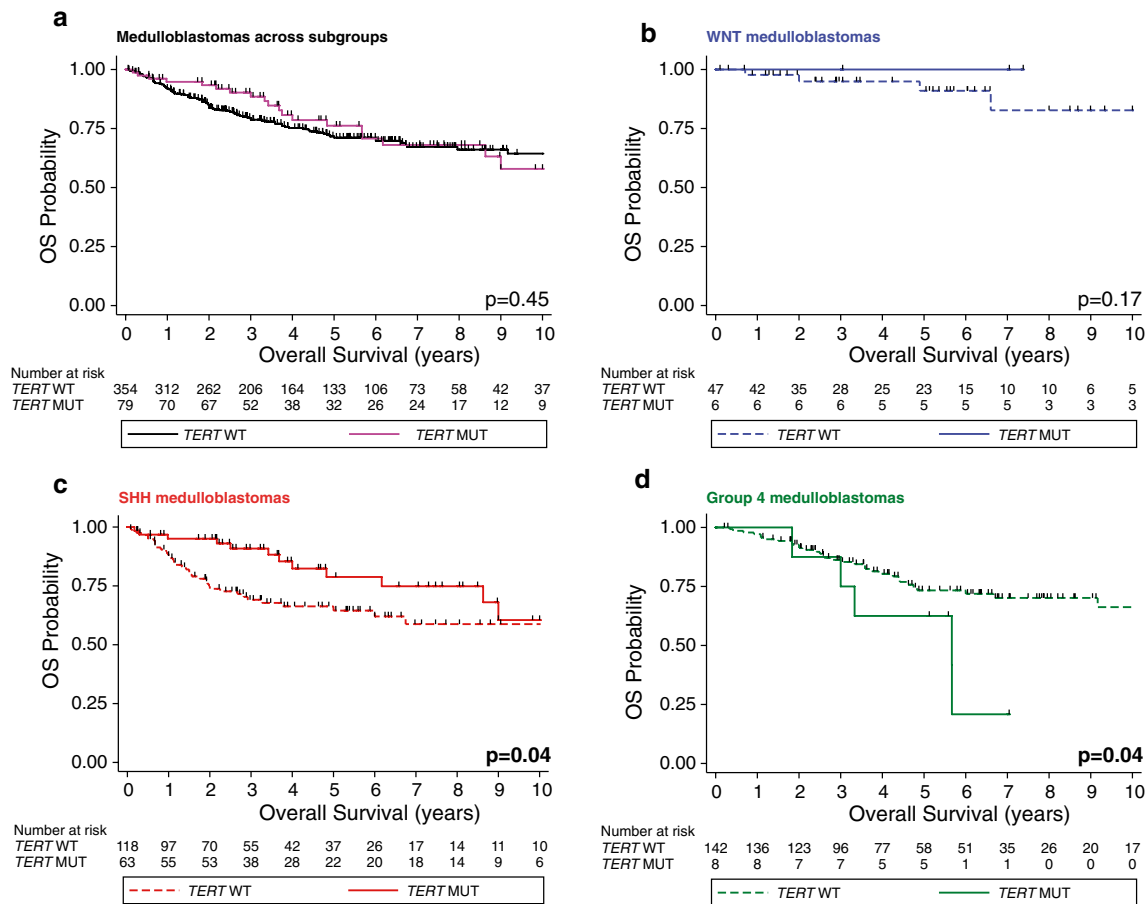


Fig. 2 Prognostic impact of *TERT* promoter mutations varies according to medulloblastoma subgroups. Kaplan–Meier estimate displaying overall survival (OS) according to *TERT* mutational status in pri-

mary medulloblastomas (**a**), within WNT (**b**), SHH (**c**), and Group 4 (**d**) subgroups. Survival differences were calculated using continuous log-rank tests. *MUT* mutation, *OS* overall survival, *WT* wild-type

4 tumors in two independent gene expression profiling studies ($p < 0.001$; Supplementary Figure 4). Furthermore, we observed *TERT* amplification in two tumors included in the entire cohort of 1,088 previously studied tumors [30]. Both of these cases with *TERT* amplification were SHH-driven medulloblastomas with wild-type *TERT* status, which were derived from pediatric patients who were both alive after 15 and 83 months of follow-up (Supplementary Figure 5). Thus, broad and focal SCNAs underline that *TERT* mutations define a genetically distinct subset within SHH tumors and possibly within the WNT and Group 4 tumors.

Discussion

The underlying biology of adult medulloblastomas remains poorly understood. Next-generation sequencing studies have revealed a broad spectrum of novel, potentially tumorigenic mutations in the recent past, but none of these

studies focused on adult medulloblastomas [12, 25, 32, 34, 39]. In addition, the vast majority of these mutations are not recurrent enough to stratify patients into distinct clinical and prognostic subgroups.

In this study, we demonstrate that *TERT* promoter mutations, initially described in melanoma [10, 11], comprise the most recurrent mutation described so far across medulloblastoma subgroups, with a particular enrichment in older patient cohorts. These somatic mutations are especially common in older patients with SHH tumors (83 %) and to a lesser extent in adults with WNT medulloblastomas (11 %). Based on the transcriptional heterogeneity of SHH tumors in infant and adult patients, we suspect that the adult cluster mainly comprised *TERT*-mutated medulloblastomas [24]. According to the initial classification of tumor types with *TERT* mutations at frequencies over 15 % (*TERT*-high) vs. below this threshold (*TERT*-low) [13], our report suggests distinct baseline telomerase activity of the cell of origin in each of the subgroups (Group 3 \geq Group 4 > WNT \gg SHH). Furthermore, the identification of

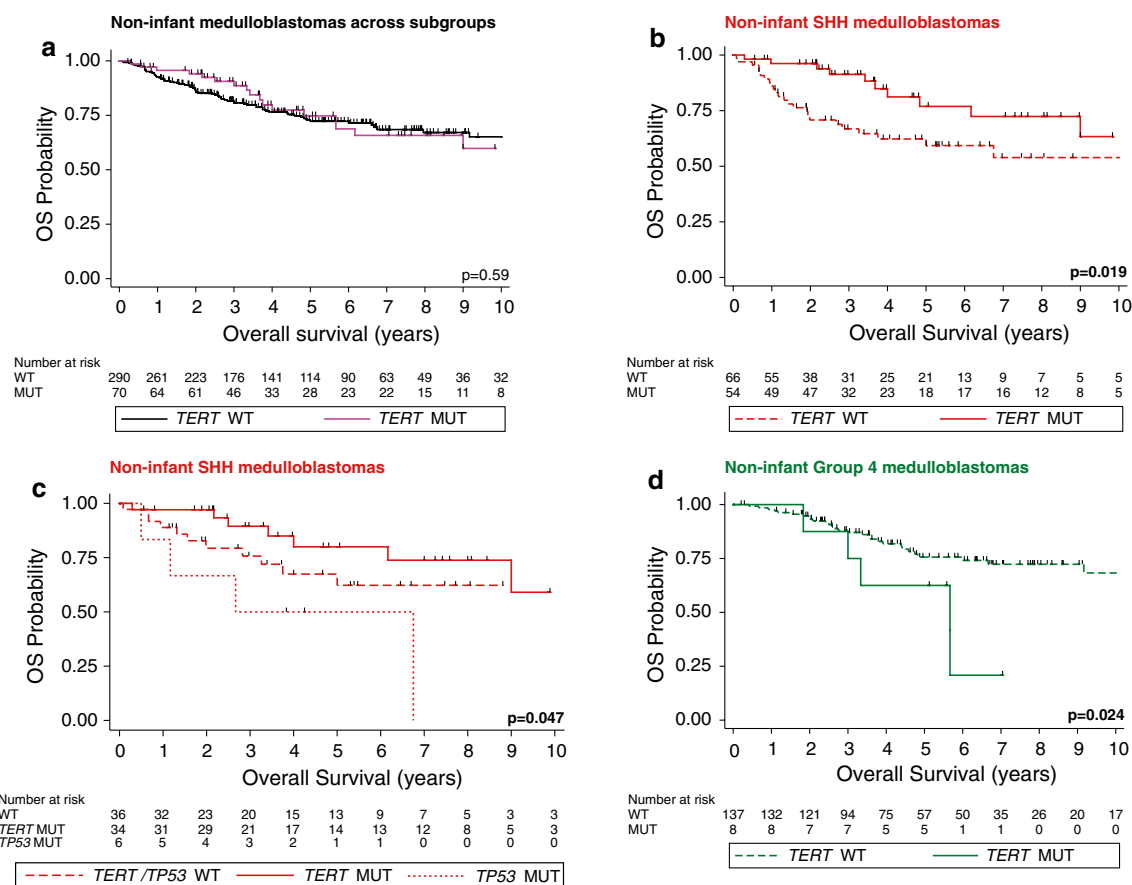
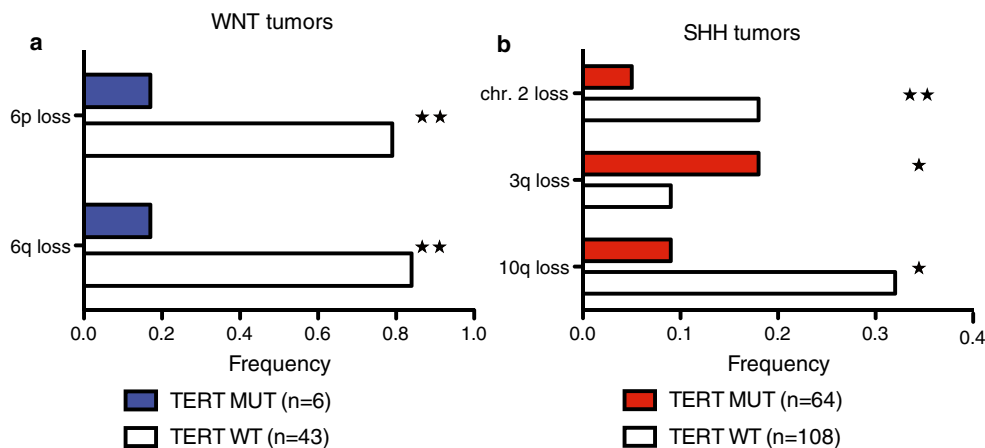


Fig. 3 *TERT* promoter mutations delineate prognostic subsets within non-infant SHH and Group 4 medulloblastomas. Kaplan–Meier estimate displaying overall survival (OS) in non-infant medulloblastomas (>3 years of age at diagnosis) according to *TERT* mutational status

across subgroups (a), in SHH tumors (b), in SHH tumors (*TP53* mutated/wild-type) (c), and Group 4 (d). Survival differences were calculated using continuous log-rank tests

Fig. 4 WNT and SHH medulloblastoma harbor distinct broad genomic imbalances depending on the mutational status of *TERT*. Bar graphs indicating the frequency of broad cytogenetic alterations in WNT (a), and SHH (b) tumors. ★★ $p < 0.01$; ★ $p < 0.05$; MUT mutation, WT wild-type



recurrent *TERT* promoter mutations makes a compelling argument that the increasing availability of whole-genome sequencing results may substantially add to a refined understanding of the mutational landscape of different biological and age-driven medulloblastoma subgroups, since earlier

next-generation sequencing studies focusing on the protein-coding regions had not encompassed gene-regulatory regions including promoter mutations.

In this study, we demonstrate that the mutational status of the *TERT* promoter can segregate individuals with SHH

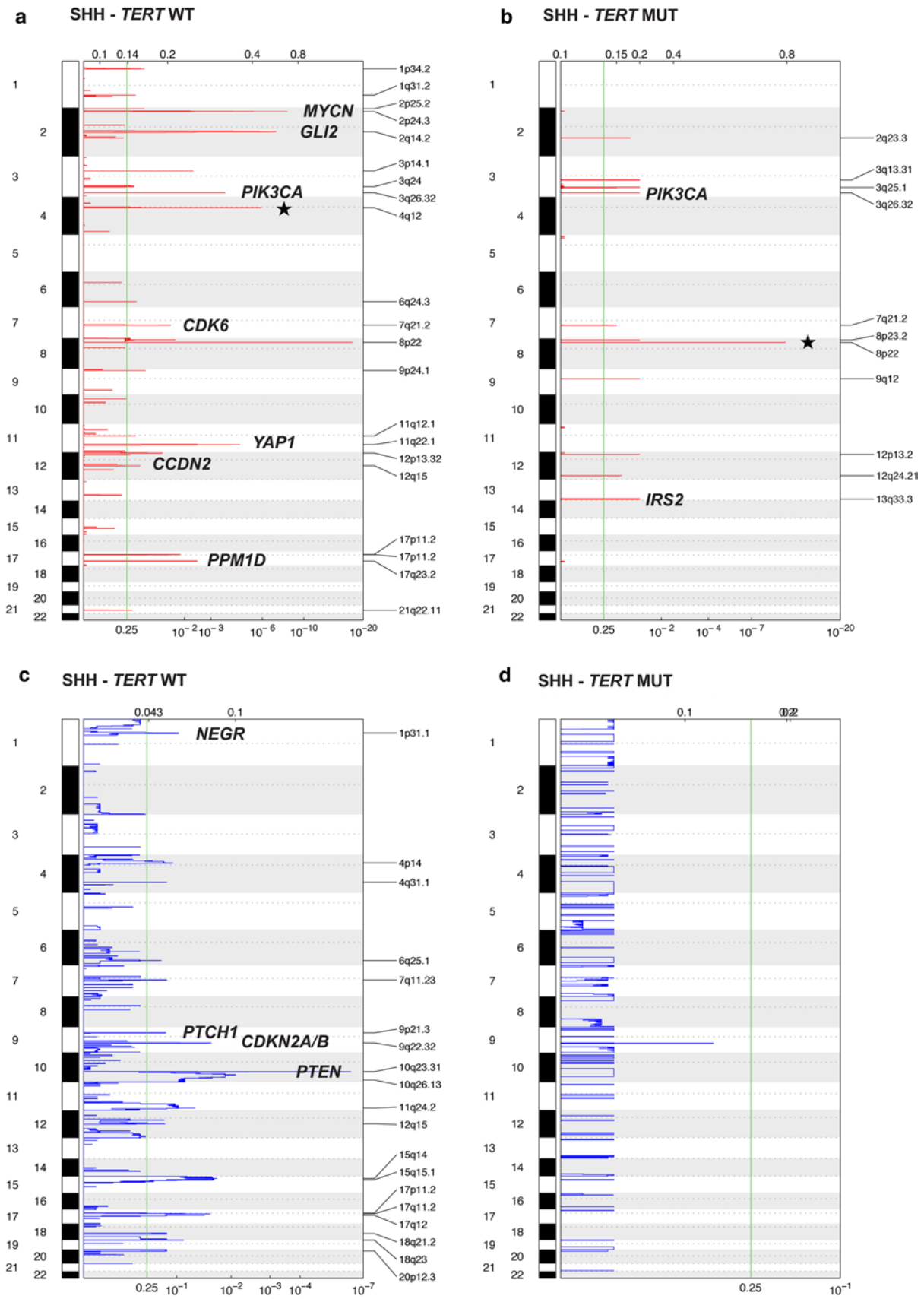


Fig. 5 Focal somatic copy number alterations are largely confined to *TERT* wild-type SHH medulloblastomas. GISTIC2 analysis indicating focal amplifications/deletions in 108 wild-type (a, c) and 64 mutant (b, d) SHH tumors, respectively. *Star* regions enriched for reported DNA copy number variations

and Group 4 medulloblastomas with distinct prognostic outcomes, while a prognostic impact of this mutation was not observed in glioblastomas [23]. Molecular mechanisms converging on *TERT* up-regulation were recently reported to be associated with dismal prognosis in pediatric brain cancers [4]. Our findings in Group 4 tumors with *TERT* mutations follow this pattern, while SHH tumors with *TERT* mutations comprise a prognostically favorable subgroup. Notably, survival curves of SHH tumors increasingly approximate with extended follow-up. We hypothesize that this pattern might be due to secondary malignancies and late relapses in older SHH tumors [36–38]. Since virtually all of the *TERT* promoter mutations encompass the mutational hotspots C228T and C250T, patient stratification can be carried out using a single PCR followed up with Sanger sequencing or with a single experiment using our newly designed Taqman-based genotyping assay. The latter assay is particularly suitable for routine clinical applications as it is highly sensitive and specific (5 ng DNA input is sufficient). Furthermore, our Taqman-based genotyping assay can be used on DNA derived from fresh-frozen and formalin-fixed paraffin-embedded tissue, since it only amplifies a short DNA fragment.

Both hotspot mutations C228T and C250T create an E-twenty-six (ETS) binding motif [10, 11] resulting in up-regulation of *TERT* expression at the mRNA level [2], which was not observed at the protein level in glioblastomas [43]. We now demonstrate that SHH tumors with *TERT* mutations are mostly mutually exclusive with those harboring 10q loss ($p = 0.017$). Notably, the relatively favorable prognosis of *TERT*-mutated SHH medulloblastomas may be explained by the relative lack of high-risk biomarkers [17, 18, 24, 44].

In summary, we describe the demographic, clinicopathological, and biological implications of *TERT* promoter mutations in a subgroup-specific fashion. This study underlines the dependence of adult WNT and SHH tumors to reacquire telomerase activity and suggests a potential prognostic utility of *TERT* mutational analysis in an era of individualized therapy.

Acknowledgments We thank Susan Archer for technical writing, and Nick Downey from Integrated DNA Technologies for support with probe/primer design. We acknowledge CRB HCL—Neurobiotec tumor bank (Hospices Civils de Lyon, Lyon, France). MDT is supported by a CIHR Clinician Scientist Phase II award, funds from the Garron Family Chair in Childhood Cancer Research at The Hospital for Sick Children and the University of Toronto, and operating funds

from the Canadian Institutes of Health Research, the National Institutes of Health (R01CA159859 and R01CA148699) and the Pediatric Brain Tumor Foundation. MR is supported by a fellowship from the Dr. Mildred Scheel Foundation for Cancer Research/German Cancer Aid and funds from the Baden-Württemberg Foundation. VR is supported by a CIHR fellowship and an Alberta Innovates-Health Solutions Clinical Fellowship. KZ acknowledges research support from MH CZ-DRO FNBr 65269705. AK was supported by the TAMOP-4.2.2A-11/1/KONV-2012-0025 project and the János Bolyai Scholarship of the Hungarian Academy of Sciences.

Conflict of interest The authors declare no conflicts of interest.

Open Access This article is distributed under the terms of the Creative Commons Attribution License which permits any use, distribution, and reproduction in any medium, provided the original author(s) and the source are credited.

References

1. Aaron RH, Elion GB, Colvin OM, Graham M, Keir S, Bigner DD, Friedman HS (1994) Busulfan therapy of central nervous system xenografts in athymic mice. *Cancer Chemother Pharmacol* 35(2):127–131
2. Arita H, Narita Y, Fukushima S, Tateishi K, Matsushita Y, Yoshida A, Miyakita Y, Ohno M, Collins VP, Kawahara N, Shibui S, Ichimura K (2013) Upregulating mutations in the TERT promoter commonly occur in adult malignant gliomas and are strongly associated with total 1p19q loss. *Acta Neuropathol* 126(2):267–276. doi:10.1007/s00401-013-1141-6
3. Blasco MA (2005) Telomeres and human disease: ageing, cancer and beyond. *Nat Rev Genet* 6(8):611–622. doi:10.1038/nrg1656
4. Castelo-Branco P, Choufani S, Mack S, Gallagher D, Zhang C, Lipman T, Zhukova N, Walker EJ, Martin D, Merino D, Wasserman JD, Elizabeth C, Alon N, Zhang L, Hovestadt V, Kool M, Jones DT, Zadeh G, Croul S, Hawkins C, Hitzler J, Wang JC, Baruchel S, Dirks PB, Malkin D, Pfister S, Taylor MD, Weksberg R, Tabori U (2013) Methylation of the TERT promoter and risk stratification of childhood brain tumours: an integrative genomic and molecular study. *Lancet Oncol* 14(6):534–542. doi:10.1016/S1470-2045(13)70110-4
5. Cho YJ, Tsherniak A, Tamayo P, Santagata S, Ligon A, Greulich H, Berhoukim R, Amani V, Goumnerova L, Eberhart CG, Lau CC, Olson JM, Gilbertson RJ, Gajjar A, Delattre O, Kool M, Ligon K, Meyerson M, Mesirov JP, Pomeroy SL (2011) Integrative genomic analysis of medulloblastoma identifies a molecular subgroup that drives poor clinical outcome. *J Clin Oncol* 29(11):1424–1430. doi:10.1200/JCO.2010.28.5148
6. Dubuc AM, Northcott PA, Mack S, Witt H, Pfister S, Taylor MD (2010) The genetics of pediatric brain tumors. *Curr Neurol Neurosci Rep* 10(3):215–223. doi:10.1007/s11910-010-0103-9
7. Forsyth NR, Wright WE, Shay JW (2002) Telomerase and differentiation in multicellular organisms: turn it off, turn it on, and turn it off again. *Differentiation* 69(4–5):188–197. doi:10.1046/j.1432-0436.2002.690412.x
8. Heaphy CM, Subhawong AP, Hong SM, Goggins MG, Montgomery EA, Gabrielson E, Netto GJ, Epstein JI, Lotan TL, Westra WH, Shih Ie M, Iacobuzio-Donahue CA, Maitra A, Li QK, Eberhart CG, Taube JM, Rakheja D, Kurman RJ, Wu TC, Roden RB, Argani P, De Marzo AM, Terracciano L, Torbenson M, Meeker AK (2011) Prevalence of the alternative lengthening of telomeres telomere maintenance mechanism in human cancer subtypes. *Am J Pathol* 179(4):1608–1615. doi:10.1016/j.ajpath.2011.06.018

9. Hiyama E, Hiyama K (2007) Telomere and telomerase in stem cells. *Br J Cancer* 96(7):1020–1024. doi:10.1038/sj.bjc.6603671
10. Horn S, Figl A, Rachakonda PS, Fischer C, Sucker A, Gast A, Kadel S, Moll I, Nagore E, Hemminki K, Schadendorf D, Kumar R (2013) TERT promoter mutations in familial and sporadic melanoma. *Science* 339(6122):959–961. doi:10.1126/science.1230062
11. Huang FW, Hodis E, Xu MJ, Kryukov GV, Chin L, Garraway LA (2013) Highly recurrent TERT promoter mutations in human melanoma. *Science* 339(6122):957–959. doi:10.1126/science.1229259
12. Jones DT, Jager N, Kool M, Zichner T, Hutter B, Sultan M, Cho YJ, Pugh TJ, Hovestadt V, Stutz AM, Rausch T, Warnatz HJ, Ryzhova M, Bender S, Sturm D, Pleier S, Cin H, Pfaff E, Sieber L, Wittmann A, Remke M, Witt H, Hutter S, Tzaridis T, Weischenfeldt J, Raeder B, Avci M, Amstislavskiy V, Zapatka M, Weber UD, Wang Q, Lasitschka B, Bartholomae CC, Schmidt M, von Kalle C, Ast V, Lawerenz C, Eils J, Kabbe R, Benes V, van Sluis P, Koster J, Volckmann R, Shih D, Betts MJ, Russell RB, Coco S, Tonini GP, Schuller U, Hans V, Graf N, Kim YJ, Monoranu C, Roggendorf W, Unterberg A, Herold-Mende C, Milde T, Kulozik AE, von Deimling A, Witt O, Maass E, Rossler J, Ebinger M, Schuhmann MU, Fruhwald MC, Hasselblatt M, Jabado N, Rutkowski S, von Bueren AO, Williamson D, Clifford SC, McCabe MG, Collins VP, Wolf S, Wiemann S, Lehrach H, Brors B, Scheurlen W, Felsberg J, Reifenberger G, Northcott PA, Taylor MD, Meyerson M, Pomeroy SL, Yaspo ML, Korbel JO, Korshunov A, Eils R, Pfister SM, Lichter P (2012) Dissecting the genomic complexity underlying medulloblastoma. *Nature* 488(7409):100–105. doi:10.1038/nature11284
13. Killela PJ, Reitman ZJ, Jiao Y, Bettgowda C, Agrawal N, Diaz LA Jr, Friedman AH, Friedman H, Gallia GL, Giovannella BC, Grollman AP, He TC, He Y, Hruban RH, Jallo GI, Mandahl N, Meeker AK, Mertens F, Netto GJ, Rasheed BA, Riggins GJ, Rosenquist TA, Schiffman M, Shih Ie M, Theodorescu D, Torbenson MS, Velculescu VE, Wang TL, Wentzensen N, Wood LD, Zhang M, McLendon RE, Bigner DD, Kinzler KW, Vogelstein B, Papadopoulos N, Yan H (2013) TERT promoter mutations occur frequently in gliomas and a subset of tumors derived from cells with low rates of self-renewal. *Proc Natl Acad Sci USA* 110(15):6021–6026. doi:10.1073/pnas.1303607110
14. Kim NW, Piatyszek MA, Prowse KR, Harley CB, West MD, Ho PL, Coviello GM, Wright WE, Weinrich SL, Shay JW (1994) Specific association of human telomerase activity with immortal cells and cancer. *Science* 266(5193):2011–2015
15. Kool M, Korshunov A, Remke M, Jones DT, Schlanstein M, Northcott PA, Cho YJ, Koster J, Schouten-van Meeteren A, van Vuurden D, Clifford SC, Pietsch T, von Bueren AO, Rutkowski S, McCabe M, Collins VP, Backlund ML, Haberler C, Bourdeaut F, Delattre O, Doz F, Ellison DW, Gilbertson RJ, Pomeroy SL, Taylor MD, Lichter P, Pfister SM (2012) Molecular subgroups of medulloblastoma: an international meta-analysis of transcriptome, genetic aberrations, and clinical data of WNT, SHH, Group 3, and Group 4 medulloblastomas. *Acta Neuropathol* 123(4):473–484. doi:10.1007/s00401-012-0958-8
16. Kool M, Koster J, Bunt J, Hasselt NE, Lakeman A, van Sluis P, Troost D, Meeteren NS, Caron HN, Cloos J, Mrcic A, Ylstra B, Grajkowska W, Hartmann W, Pietsch T, Ellison D, Clifford SC, Versteeg R (2008) Integrated genomics identifies five medulloblastoma subtypes with distinct genetic profiles, pathway signatures and clinicopathological features. *PLoS One* 3(8):e3088. doi:10.1371/journal.pone.0003088
17. Korshunov A, Remke M, Kool M, Hielscher T, Northcott PA, Williamson D, Pfaff E, Witt H, Jones DT, Ryzhova M, Cho YJ, Wittmann A, Benner A, Weiss WA, von Deimling A, Scheurlen W, Kulozik AE, Clifford SC, Peter Collins V, Westermann F, Taylor MD, Lichter P, Pfister SM (2012) Biological and clinical heterogeneity of MYCN-amplified medulloblastoma. *Acta Neuropathol* 123(4):515–527. doi:10.1007/s00401-011-0918-8
18. Korshunov A, Remke M, Werft W, Benner A, Ryzhova M, Witt H, Sturm D, Wittmann A, Schottler A, Felsberg J, Reifenberger G, Rutkowski S, Scheurlen W, Kulozik AE, von Deimling A, Lichter P, Pfister SM (2010) Adult and pediatric medulloblastomas are genetically distinct and require different algorithms for molecular risk stratification. *J Clin Oncol* 28(18):3054–3060. doi:10.1200/JCO.2009.25.7121
19. Liu X, Bishop J, Shan Y, Pai S, Liu D, Murugan AK, Sun H, El-Naggar AK, Xing M (2013) Highly prevalent TERT promoter mutations in aggressive thyroid cancers. *Endocr Relat Cancer* 20(4):603–610. doi:10.1530/ERC-13-0210
20. Louis DN, Ohgaki H, Wiestler OD, Cavenee WK, Burger PC, Jouvet A, Scheithauer BW, Kleihues P (2007) The 2007 WHO classification of tumours of the central nervous system. *Acta Neuropathol* 114(2):97–109. doi:10.1007/s00401-007-0243-4
21. Mermel CH, Schumacher SE, Hill B, Meyerson ML, Beroukhi R, Getz G (2011) GISTIC2.0 facilitates sensitive and confident localization of the targets of focal somatic copy-number alteration in human cancers. *Genome Biol* 12(4):R41. doi:10.1186/gb-2011-12-4-r41
22. Morrison SJ, Prowse KR, Ho P, Weissman IL (1996) Telomerase activity in hematopoietic cells is associated with self-renewal potential. *Immunity* 5(3):207–216
23. Nonoguchi N, Ohta T, Oh JE, Kim YH, Kleihues P, Ohgaki H (2013) TERT promoter mutations in primary and secondary glioblastomas. *Acta Neuropathol*. doi:10.1007/s00401-013-1163-0
24. Northcott PA, Hielscher T, Dubuc A, Mack S, Shih D, Remke M, Al-Halabi H, Albrecht S, Jabado N, Eberhart CG, Grajkowska W, Weiss WA, Clifford SC, Bouffet E, Rutka JT, Korshunov A, Pfister S, Taylor MD (2011) Pediatric and adult sonic hedgehog medulloblastomas are clinically and molecularly distinct. *Acta Neuropathol* 122(2):231–240. doi:10.1007/s00401-011-0846-7
25. Northcott PA, Jones DT, Kool M, Robinson GW, Gilbertson RJ, Cho YJ, Pomeroy SL, Korshunov A, Lichter P, Taylor MD, Pfister SM (2012) Medulloblastomics: the end of the beginning. *Nat Rev Cancer* 12(12):818–834. doi:10.1038/nrc3410
26. Northcott PA, Korshunov A, Pfister SM, Taylor MD (2012) The clinical implications of medulloblastoma subgroups. *Nat Rev Neurol* 8(6):340–351. doi:10.1038/nrneurol.2012.78
27. Northcott PA, Korshunov A, Witt H, Hielscher T, Eberhart CG, Mack S, Bouffet E, Clifford SC, Hawkins CE, French P, Rutka JT, Pfister S, Taylor MD (2011) Medulloblastoma comprises four distinct molecular variants. *J Clin Oncol* 29(11):1408–1414. doi:10.1200/JCO.2009.27.4324
28. Northcott PA, Nakahara Y, Wu X, Feuk L, Ellison DW, Croul S, Mack S, Kongkham PN, Peacock J, Dubuc A, Ra YS, Zilberberg K, McLeod J, Scherer SW, Sunil Rao J, Eberhart CG, Grajkowska W, Gillespie Y, Lach B, Grundy R, Pollack IF, Hamilton RL, Van Meter T, Carlotti CG, Boop F, Bigner D, Gilbertson RJ, Rutka JT, Taylor MD (2009) Multiple recurrent genetic events converge on control of histone lysine methylation in medulloblastoma. *Nat Genet* 41(4):465–472. doi:10.1038/ng.336
29. Northcott PA, Rutka JT, Taylor MD (2010) Genomics of medulloblastoma: from Giemsa-banding to next-generation sequencing in 20 years. *Neurosurg Focus* 28(1):E6. doi:10.3171/2009.10.FOCUS09218
30. Northcott PA, Shih DJ, Peacock J, Garzia L, Morrissy AS, Zichner T, Stutz AM, Korshunov A, Reimand J, Schumacher SE, Beroukhi R, Ellison DW, Marshall CR, Lionel AC, Mack S, Dubuc A, Yao Y, Ramaswamy V, Luu B, Rolider A, Cavalli FM, Wang X, Remke M, Wu X, Chiu RY, Chu A, Chuah E, Corbett RD, Hoad GR, Jackman SD, Li Y, Lo A, Mungall KL, Nip KM, Qian JQ, Raymond AG, Thiessen NT, Varhol RJ, Birol I, Moore

- RA, Mungall AJ, Holt R, Kawauchi D, Roussel MF, Kool M, Jones DT, Witt H, Fernandez LA, Kenney AM, Wechsler-Reya RJ, Dirks P, Aviv T, Grajkowska WA, Perek-Polnik M, Haberler CC, Delattre O, Reynaud SS, Doz FF, Pernet-Fattat SS, Cho BK, Kim SK, Wang KC, Scheurlen W, Eberhart CG, Fevre-Montange M, Jouvét A, Pollack IF, Fan X, Muraszko KM, Gillespie GY, Di Rocco C, Massimi L, Michiels EM, Kloosterhof NK, French PJ, Kros JM, Olson JM, Ellenbogen RG, Zitterbart K, Kren L, Thompson RC, Cooper MK, Lach B, McLendon RE, Bigner DD, Fontebasso A, Albrecht S, Jabado N, Lindsey JC, Bailey S, Gupta N, Weiss WA, Bogner L, Klekner A, Van Meter TE, Kumabe T, Tominaga T, Elbabaa SK, Leonard JR, Rubin JB, Liau LM, Van Meir EG, Fouladi M, Nakamura H, Cinalli G, Garami M, Hauser P, Saad AG, Iolascon A, Jung S, Carlotti CG, Vibhakhar R, Ra YS, Robinson S, Zollo M, Faria CC, Chan JA, Levy ML, Sorensen PH, Meyerson M, Pomeroy SL, Cho YJ, Bader GD, Tabori U, Hawkins CE, Bouffet E, Scherer SW, Rutka JT, Malkin D, Clifford SC, Jones SJ, Korbelt JO, Pfister SM, Marra MA, Taylor MD (2012) Subgroup-specific structural variation across 1,000 medulloblastoma genomes. *Nature* 488(7409):49–56. doi:[10.1038/nature11327](https://doi.org/10.1038/nature11327)
31. Northcott PA, Shih DJ, Remke M, Cho YJ, Kool M, Hawkins C, Eberhart CG, Dubuc A, Guettouche T, Cardentey Y, Bouffet E, Pomeroy SL, Marra M, Malkin D, Rutka JT, Korshunov A, Pfister S, Taylor MD (2011) Rapid, reliable, and reproducible molecular sub-grouping of clinical medulloblastoma samples. *Acta Neuropathol*. doi:[10.1007/s00401-011-0899-7](https://doi.org/10.1007/s00401-011-0899-7)
32. Parsons DW, Li M, Zhang X, Jones S, Leary RJ, Lin JC, Boca SM, Carter H, Samayoa J, Bettegowda C, Gallia GL, Jallo GI, Binder ZA, Nikolsky Y, Hartigan J, Smith DR, Gerhard DS, Fults DW, Vandenberg S, Berger MS, Marie SK, Shinjo SM, Clara C, Phillips PC, Minturn JE, Biegel JA, Judkins AR, Resnick AC, Storm PB, Curran T, He Y, Rasheed BA, Friedman HS, Keir ST, McLendon R, Northcott PA, Taylor MD, Burger PC, Riggins GJ, Karchin R, Parmigiani G, Bigner DD, Yan H, Papadopoulos N, Vogelstein B, Kinzler KW, Velculescu VE (2011) The genetic landscape of the childhood cancer medulloblastoma. *Science* 331(6016):435–439. doi:[10.1126/science.1198056](https://doi.org/10.1126/science.1198056)
33. Pfister SM, Korshunov A, Kool M, Hasselblatt M, Eberhart C, Taylor MD (2010) Molecular diagnostics of CNS embryonal tumors. *Acta Neuropathol* 120(5):553–566. doi:[10.1007/s00401-010-0751-5](https://doi.org/10.1007/s00401-010-0751-5)
34. Pugh TJ, Weeraratne SD, Archer TC, Pomeranz Krummel DA, Auclair D, Bochicchio J, Carneiro MO, Carter SL, Cibulskis K, Erlich RL, Greulich H, Lawrence MS, Lennon NJ, McKenna A, Meldrum J, Ramos AH, Ross MG, Russ C, Shefler E, Sivachenko A, Sogoloff B, Stojanov P, Tamayo P, Mesirov JP, Amani V, Teider N, Sengupta S, Francois JP, Northcott PA, Taylor MD, Yu F, Crabtree GR, Kautzman AG, Gabriel SB, Getz G, Jager N, Jones DT, Lichter P, Pfister SM, Roberts TM, Meyerson M, Pomeroy SL, Cho YJ (2012) Medulloblastoma exome sequencing uncovers subtype-specific somatic mutations. *Nature* 488(7409):106–110. doi:[10.1038/nature11329](https://doi.org/10.1038/nature11329)
35. Ramaswamy V, Northcott PA, Taylor MD (2011) FISH and chips: the recipe for improved prognostication and outcomes for children with medulloblastoma. *Cancer Genet* 204(11):577–588. doi:[10.1016/j.cancergen.2011.11.001](https://doi.org/10.1016/j.cancergen.2011.11.001)
36. Ramaswamy V, Remke M, Bouffet E, Faria CC, Perreault S, Cho YJ, Shih DJ, Luu B, Dubuc AM, Northcott PA, Schüller U, Gururangan S, McLendon R, Bigner D, Fouladi M, Ligon KL, Pomeroy SL, Dunn S, Triscott J, Jabado N, Fontebasso A, Jones DT, Kool M, Karajannis MA, Gardner SL, Zagzag D, Nunes S, Pimentel J, Mora J, Lipp E, Walter AW, Ryzhova M, Zheludkova O, Kumirova E, Alshami J, Croul SE, Rutka JT, Hawkins C, Tabori U, Codisoti KE, Packer RJ, Pfister SM, Korshunov A, Taylor MD (2013) Recurrence patterns across medulloblastoma subgroups: an integrated clinical and molecular analysis. *Lancet Oncol*. doi:[10.1016/S1470-2045\(13\)70449-2](https://doi.org/10.1016/S1470-2045(13)70449-2)
37. Remke M, Hielscher T, Korshunov A, Northcott PA, Bender S, Kool M, Westermann F, Benner A, Cin H, Ryzhova M, Sturm D, Witt H, Haag D, Toedt G, Wittmann A, Schottler A, von Bueren AO, von Deimling A, Rutkowski S, Scheurlen W, Kulozik AE, Taylor MD, Lichter P, Pfister SM (2011) FSTL5 is a marker of poor prognosis in Non-WNT/Non-SHH medulloblastoma. *J Clin Oncol* 29(29):3852–3861. doi:[10.1200/JCO.2011.36.2798](https://doi.org/10.1200/JCO.2011.36.2798)
38. Remke M, Hielscher T, Northcott PA, Witt H, Ryzhova M, Wittmann A, Benner A, von Deimling A, Scheurlen W, Perry A, Croul S, Kulozik AE, Lichter P, Taylor MD, Pfister SM, Korshunov A (2011) Adult medulloblastoma comprises three major molecular variants. *J Clin Oncol* 29(19):2717–2723. doi:[10.1200/JCO.2011.34.9373](https://doi.org/10.1200/JCO.2011.34.9373)
39. Robinson G, Parker M, Kranenburg TA, Lu C, Chen X, Ding L, Phoenix TN, Hedlund E, Wei L, Zhu X, Chalhoub N, Baker SJ, Huether R, Kriwacki R, Curley N, Thiruvankatam R, Wang J, Wu G, Rusch M, Hong X, Becksfort J, Gupta P, Ma J, Easton J, Vadodaria B, Onar-Thomas A, Lin T, Li S, Pounds S, Paugh S, Zhao D, Kawauchi D, Roussel MF, Finkelstein D, Ellison DW, Lau CC, Bouffet E, Hassall T, Gururangan S, Cohn R, Fulton RS, Fulton LL, Dooling DJ, Ochoa K, Gajjar A, Mardis ER, Wilson RK, Downing JR, Zhang J, Gilbertson RJ (2012) Novel mutations target distinct subgroups of medulloblastoma. *Nature* 488(7409):43–48. doi:[10.1038/nature11213](https://doi.org/10.1038/nature11213)
40. Rutkowski S, von Hoff K, Emser A, Zwiener I, Pietsch T, Figarella-Branger D, Giangaspero F, Ellison DW, Garre ML, Biassoni V, Grundy RG, Finlay JL, Dhall G, Raquin MA, Grill J (2010) Survival and prognostic factors of early childhood medulloblastoma: an international meta-analysis. *J Clin Oncol* 28(33):4961–4968. doi:[10.1200/JCO.2010.30.2299](https://doi.org/10.1200/JCO.2010.30.2299)
41. Taylor MD, Northcott PA, Korshunov A, Remke M, Cho YJ, Clifford SC, Eberhart CG, Parsons DW, Rutkowski S, Gajjar A, Ellison DW, Lichter P, Gilbertson RJ, Pomeroy SL, Kool M, Pfister SM (2012) Molecular subgroups of medulloblastoma: the current consensus. *Acta Neuropathol* 123(4):465–472. doi:[10.1007/s00401-011-0922-z](https://doi.org/10.1007/s00401-011-0922-z)
42. Thompson MC, Fuller C, Hogg TL, Dalton J, Finkelstein D, Lau CC, Chintagumpala M, Adesina A, Ashley DM, Kellie SJ, Taylor MD, Curran T, Gajjar A, Gilbertson RJ (2006) Genomics identifies medulloblastoma subgroups that are enriched for specific genetic alterations. *J Clin Oncol* 24(12):1924–1931. doi:[10.1200/JCO.2005.04.4974](https://doi.org/10.1200/JCO.2005.04.4974)
43. Vinagre J, Almeida A, Populo H, Batista R, Lyra J, Pinto V, Coelho R, Celestino R, Prazeres H, Lima L, Melo M, Rocha AG, Preto A, Castro P, Castro L, Pardal F, Lopes JM, Santos LL, Reis RM, Cameselle-Teijeiro J, Sobrinho-Simoes M, Lima J, Maximo V, Soares P (2013) Frequency of TERT promoter mutations in human cancers. *Nature Commun* 4:2185. doi:[10.1038/ncomms3185](https://doi.org/10.1038/ncomms3185)
44. Zhukova N, Ramaswamy V, Remke M, Pfaff E, Shih DJ, Martin DC, Castelo-Branco P, Baskin B, Ray PN, Bouffet E, von Bueren AO, Jones DT, Northcott PA, Kool M, Sturm D, Pugh TJ, Pomeroy SL, Cho YJ, Pietsch T, Gessi M, Rutkowski S, Bogner L, Klekner A, Cho BK, Kim SK, Wang KC, Eberhart CG, Fevre-Montange M, Fouladi M, French PJ, Kros M, Grajkowska WA, Gupta N, Weiss WA, Hauser P, Jabado N, Jouvét A, Jung S, Kumabe T, Lach B, Leonard JR, Rubin JB, Liau LM, Massimi L, Pollack IF, Shin Ra Y, Van Meir EG, Zitterbart K, Schuller U, Hill RM, Lindsey JC, Schwalbe EC, Bailey S, Ellison DW, Hawkins C, Malkin D, Clifford SC, Korshunov A, Pfister S, Taylor MD, Tabori U (2013) Subgroup-specific prognostic implications of TP53 mutation in medulloblastoma. *J Clin Oncol* 31(23):2927–2935. doi:[10.1200/JCO.2012.48.5052](https://doi.org/10.1200/JCO.2012.48.5052)