



Comments on "Unilateral Reversible Posterior Leukoencephalopathy Syndrome after Coiling of an Aneurysm"

Citation

Caplan, Louis R. 2014. "Comments on "Unilateral Reversible Posterior Leukoencephalopathy Syndrome after Coiling of an Aneurysm"." *Journal of Clinical Neurology* (Seoul, Korea) 10 (3): 278. doi:10.3988/jcn.2014.10.3.278. <http://dx.doi.org/10.3988/jcn.2014.10.3.278>.

Published Version

doi:10.3988/jcn.2014.10.3.278

Permanent link

<http://nrs.harvard.edu/urn-3:HUL.InstRepos:12717528>

Terms of Use

This article was downloaded from Harvard University's DASH repository, and is made available under the terms and conditions applicable to Other Posted Material, as set forth at <http://nrs.harvard.edu/urn-3:HUL.InstRepos:dash.current.terms-of-use#LAA>

Share Your Story

The Harvard community has made this article openly available.
Please share how this access benefits you. [Submit a story](#).

[Accessibility](#)



Open Access

Comments on “Unilateral Reversible Posterior Leukoencephalopathy Syndrome after Coiling of an Aneurysm”

Louis R Caplan

Division of Cerebrovascular Disease, Department of Neurology, Beth Israel Deaconess Medical Center, Harvard Medical School, Boston, MA, USA

I write concerning the case described as *Unilateral reversible posterior leukoencephalopathy syndrome after coiling of an aneurysm* reported by Huijgen et al.¹

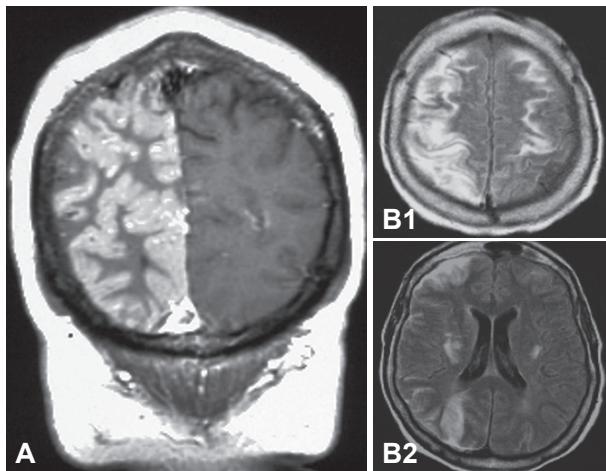


Fig. 1. Fluid attenuated inversion recovery sequences of MRI scans. MRI show increased signal involving unilateral (A) or bilateral (but predominantly unilateral) (B1 and B2) gyri and their underlying white matter in two patients who developed severe migraine.

The patient reported in this case study developed a very severe headache during triple-H therapy after coiling of an aneurysm. The abnormalities that developed on MRI are those of edema that followed the pattern of involving gyri and their underlying white matter. I have seen this pattern in two other patients who developed severe migraine (Fig. 1) Each had a history of migraine. The findings in each of my patients and the patient reported by Huijgen et al.¹ were fully reversible. I am confident that these findings represent an unusually severe migraine syndrome and not posterior reversible encephalopathy syndrome. These clinical and MR findings have not been sufficiently reported in the literature.

Conflicts of Interest

The author has no financial conflicts of interest.

REFERENCE

1. Huijgen W, van der Kallen B, Boiten J, Lycklama À Nijeholt G. Unilateral reversible posterior leukoencephalopathy syndrome after coiling of an aneurysm. *J Clin Neurol* 2014;10:59-63.

Received March 6, 2014

Revised May 22, 2014

Accepted May 22, 2014

Correspondence

Louis R Caplan, MD, Division of Cerebrovascular Disease, Department of Neurology, Beth Israel Deaconess Medical Center, Harvard Medical School, Palmer 127, West Campus, 330 Brookline Ave, Boston, MA 02215, USA

Tel +1-617-632-8910, Fax +1-617-632-8920

E-mail lcaplan@bidmc.harvard.edu

© This is an Open Access article distributed under the terms of the Creative Commons Attribution Non-Commercial License (<http://creativecommons.org/licenses/by-nc/3.0>) which permits unrestricted non-commercial use, distribution, and reproduction in any medium, provided the original work is properly cited.