



# Identification and Functional Characterization of G6PC2 Coding Variants Influencing Glycemic Traits Define an Effector Transcript at the G6PC2-ABCB11 Locus

## Citation

Mahajan, A., X. Sim, H. J. Ng, A. Manning, M. A. Rivas, H. M. Highland, A. E. Locke, et al. 2015. "Identification and Functional Characterization of G6PC2 Coding Variants Influencing Glycemic Traits Define an Effector Transcript at the G6PC2-ABCB11 Locus." PLoS Genetics 11 (1): e1004876. doi:10.1371/journal.pgen.1004876. <http://dx.doi.org/10.1371/journal.pgen.1004876>.

## Published Version

doi:10.1371/journal.pgen.1004876

## Permanent link

<http://nrs.harvard.edu/urn-3:HUL.InstRepos:14065508>

## Terms of Use

This article was downloaded from Harvard University's DASH repository, and is made available under the terms and conditions applicable to Other Posted Material, as set forth at <http://nrs.harvard.edu/urn-3:HUL.InstRepos:dash.current.terms-of-use#LAA>

## Share Your Story

The Harvard community has made this article openly available. Please share how this access benefits you. [Submit a story](#).

[Accessibility](#)

RESEARCH ARTICLE

# Identification and Functional Characterization of *G6PC2* Coding Variants Influencing Glycemic Traits Define an Effector Transcript at the *G6PC2-ABCB11* Locus



**OPEN ACCESS**

**Citation:** Mahajan A, Sim X, Ng HJ, Manning A, Rivas MA, Highland HM, et al. (2015) Identification and Functional Characterization of *G6PC2* Coding Variants Influencing Glycemic Traits Define an Effector Transcript at the *G6PC2-ABCB11* Locus. *PLoS Genet* 11(1): e1004876. doi:10.1371/journal.pgen.1004876

**Editor:** Martin D. Tobin, University of Leicester, UNITED KINGDOM

**Received:** June 25, 2014

**Accepted:** November 4, 2014

**Published:** January 27, 2015

**Copyright:** This is an open access article, free of all copyright, and may be freely reproduced, distributed, transmitted, modified, built upon, or otherwise used by anyone for any lawful purpose. The work is made available under the [Creative Commons CC0](http://creativecommons.org/licenses/by/4.0/) public domain dedication.

**Data Availability Statement:** This is a meta-analysis that was conducted on summary level results. Individual level data was not shared amongst the authors of the manuscript, and the corresponding authors are not in a position to make the individual level data available. For most of the samples included, individual level data deposition is precluded by existing consents, and other issues related to individual privacy. Summary level data from the meta-analysis are available from the DIAGRAM ([http://www.diagram-consortium.org/Mahajan\\_2014\\_ExomeChip/](http://www.diagram-consortium.org/Mahajan_2014_ExomeChip/)) and

Anubha Mahajan<sup>1‡</sup>, Xueling Sim<sup>2‡</sup>, Hui Jin Ng<sup>3‡</sup>, Alisa Manning<sup>4</sup>, Manuel A. Rivas<sup>1</sup>, Heather M. Highland<sup>5</sup>, Adam E. Locke<sup>2</sup>, Niels Grarup<sup>6</sup>, Hae Kyung Im<sup>7</sup>, Pablo Cingolani<sup>8,9</sup>, Jason Flannick<sup>4,10</sup>, Pierre Fontanillas<sup>4</sup>, Christian Fuchsberger<sup>2</sup>, Kyle J. Gaulton<sup>1</sup>, Tanya M. Teslovich<sup>2</sup>, N. William Rayner<sup>1,3,11</sup>, Neil R. Robertson<sup>1,3</sup>, Nicola L. Beer<sup>3</sup>, Jana K. Rundle<sup>3</sup>, Jette Bork-Jensen<sup>6</sup>, Claes Ladenvall<sup>12</sup>, Christine Blancher<sup>13</sup>, David Buck<sup>13</sup>, Gemma Buck<sup>13</sup>, Noël P. Burt<sup>4</sup>, Stacey Gabriel<sup>4</sup>, Anette P. Gjesing<sup>6</sup>, Christopher J. Groves<sup>3</sup>, Mette Hollensted<sup>6</sup>, Jeroen R. Huyghe<sup>2</sup>, Anne U. Jackson<sup>2</sup>, Goo Jun<sup>2</sup>, Johanne Marie Justesen<sup>6</sup>, Massimo Mangino<sup>14</sup>, Jacquelyn Murphy<sup>4</sup>, Matt Neville<sup>3</sup>, Robert Onofrio<sup>4</sup>, Kerrin S. Small<sup>14</sup>, Heather M. Stringham<sup>2</sup>, Ann-Christine Syvänen<sup>15</sup>, Joseph Trakalo<sup>13</sup>, Goncalo Abecasis<sup>2</sup>, Graeme I. Bell<sup>16</sup>, John Blangero<sup>17</sup>, Nancy J. Cox<sup>18</sup>, Ravindranath Duggirala<sup>17</sup>, Craig L. Hanis<sup>19</sup>, Mark Seielstad<sup>20,21</sup>, James G. Wilson<sup>22</sup>, Cramer Christensen<sup>23</sup>, Ivan Brandslund<sup>24,25</sup>, Rainer Rauramaa<sup>26</sup>, Gabriela L. Surdulescu<sup>14</sup>, Alex S. F. Doney<sup>27</sup>, Lars Lannfelt<sup>28</sup>, Allan Linneberg<sup>29,30,31</sup>, Bo Isomaa<sup>32,33</sup>, Tiinamaija Tuomi<sup>33,34</sup>, Marit E. Jørgensen<sup>35</sup>, Torben Jørgensen<sup>31,36</sup>, Johanna Kuusisto<sup>37,38</sup>, Matti Uusitupa<sup>39</sup>, Veikko Salomaa<sup>40</sup>, Timothy D. Spector<sup>14</sup>, Andrew D. Morris<sup>41</sup>, Colin N. A. Palmer<sup>42</sup>, Francis S. Collins<sup>43</sup>, Karen L. Mohlke<sup>44</sup>, Richard N. Bergman<sup>45</sup>, Erik Ingelsson<sup>1,46</sup>, Lars Lind<sup>47</sup>, Jaakko Tuomilehto<sup>48,49,50,51</sup>, Torben Hansen<sup>6,52</sup>, Richard M. Watanabe<sup>53,54,55</sup>, Inga Prokopenko<sup>1,3,56</sup>, Josee Dupuis<sup>57,58</sup>, Fredrik Karpe<sup>3,59</sup>, Leif Groop<sup>12</sup>, Markku Laakso<sup>37,38</sup>, Oluf Pedersen<sup>6</sup>, Jose C. Florez<sup>4,60,61,62</sup>, Andrew P. Morris<sup>1,63,64</sup>, David Altshuler<sup>4,10,60,61,65,66</sup>, James B. Meigs<sup>67</sup>, Michael Boehnke<sup>2</sup>, Mark I. McCarthy<sup>1,3,59</sup>, Cecilia M. Lindgren<sup>1,4,\*‡</sup>, Anna L. Gloyn<sup>3,59,\*‡</sup>, On Behalf of the T2D-GENES consortium and GoT2D consortium<sup>†</sup>

**1** Wellcome Trust Centre for Human Genetics, Nuffield Department of Medicine, University of Oxford, Oxford, United Kingdom, **2** Department of Biostatistics and Center for Statistical Genetics, University of Michigan, Ann Arbor, Michigan, United States of America, **3** Oxford Centre for Diabetes, Endocrinology and Metabolism, Radcliffe Department of Medicine, University of Oxford, Oxford, United Kingdom, **4** Program in Medical and Population Genetics, Broad Institute, Cambridge, Massachusetts, United States of America, **5** Human Genetics Center, The University of Texas Graduate School of Biomedical Sciences at Houston, The University of Texas Health Science Center at Houston, Houston, Texas, United States of America, **6** The Novo Nordisk Foundation Center for Basic Metabolic Research, Faculty of Health and Medical Sciences, University of Copenhagen, Copenhagen, Denmark, **7** Department of Health Studies, Biostatistics Laboratory, The University of Chicago, Chicago, Illinois, United States of America, **8** School of Computer Science, McGill University, Montreal, Quebec, Canada, **9** McGill University and Génome Québec Innovation Centre, Montreal, Quebec, Canada, **10** Department of Molecular Biology, Massachusetts General Hospital, Boston, Massachusetts, United States of America, **11** Department of Human Genetics, Wellcome Trust Sanger Institute, Hinxton, Cambridgeshire, United Kingdom, **12** Department of Clinical Sciences, Diabetes and Endocrinology, Lund University Diabetes Centre, Malmö, Sweden, **13** High Throughput Genomics, Oxford Genomics Centre, Wellcome Trust Centre for Human Genetics, Nuffield Department of Medicine, University of Oxford, Oxford, United Kingdom, **14** Department of Twin Research and Genetic Epidemiology, King's College London, London, United Kingdom, **15** Department of Medical Sciences, Molecular Medicine and Science for Life Laboratory, Uppsala University, Uppsala, Sweden, **16** Departments of Medicine and Human Genetics, The University of Chicago, Chicago, Illinois, United States of America, **17** Department of Genetics, Texas Biomedical Research Institute, San Antonio, Texas, United States of America,

LocusZoom (<http://csg.sph.umich.edu/locuszoom/>) website.

**Funding:** HJN was supported by the Agency for Science, Technology and Research in Singapore. CF was supported by the Austrian Science Fund (FWF) grant J-3401. JCF was supported by MGH Research Scholars Award. APM is a Wellcome Trust Senior Research Fellow in Basic and Biomedical Science. JBM was supported by NIDDK R01 DK078616 and K24 DK080140. MIM is a Wellcome Trust Senior Investigator (WT098381); and a National Institute of Health Research Senior Investigator. CML is a Wellcome Trust Research Career Development Fellow (086596/Z/08/Z). ALG is a Wellcome Trust Senior Research Fellow in Basic and Biomedical Science (095010/Z/10/Z). Funding for the GoT2D and T2D-GENES studies was provided by grants NIH U01s DK085526, DK085501, DK085524, DK085545, and DK085584 (Multiethnic Study of Type 2 Diabetes Genes) and DK088389 (Low-Pass Sequencing and High-Density SNP Genotyping for Type 2 Diabetes). Analysis and genotyping of the British UK cohorts was supported by Wellcome Trust funding 090367, 098381, 090532, 083948, 085475, MRC (G0601261), EU (Framework 7) HEALTH-F4-2007-201413, and NIDDK DK098032. The Oxford Biobank is supported by the Oxford Biomedical Research Centre and part of the National NIHR Bioresearch. The PIVUS/ULSAM cohort was supported by Wellcome Trust Grants WT098017, WT064890, WT090532, Uppsala University, Uppsala University Hospital, the Swedish Research Council and the Swedish Heart-Lung Foundation. GoDARTS study was funded by The Wellcome Trust Study Cohort Wellcome Trust Functional Genomics Grant (2004-2008) (Grant No: 072960/2/03/2) and The Wellcome Trust Scottish Health Informatics Programme (SHIP) (2009-2012) (Grant No: 086113/Z/08/Z). TwinsUK study was funded by the Wellcome Trust; European Community's Seventh Framework Programme (FP7/2007–2013). The study also receives support from the National Institute for Health Research (NIHR) BioResource Clinical Research Facility and Biomedical Research Centre based at Guy's and St Thomas' NHS Foundation Trust and King's College London. TDS is holder of an ERC Advanced Principal Investigator award. The Danish studies were supported by the Lundbeck Foundation (Lundbeck Foundation Centre for Applied Medical Genomics in Personalised Disease Prediction, Prevention and Care (LuCamp); <http://www.lucamp.org/>) and the Danish Council for Independent Research. The Novo Nordisk Foundation Center for Basic Metabolic Research is an independent Research Center at the University of Copenhagen, partially funded by an unrestricted donation from the Novo Nordisk Foundation (<http://www.metabol.ku.dk/>). The METSIM study was supported by the Academy

18 Department of Medicine, Section of Genetic Medicine, The University of Chicago, Chicago, Illinois, United States of America, 19 Human Genetics Center, School of Public Health, The University of Texas Health Science Center at Houston, Houston, Texas, United States of America, 20 Blood Systems Research Institute, San Francisco, California, United States of America, 21 Department of Laboratory Medicine & Institute for Human Genetics, University of California, San Francisco, San Francisco, California, United States of America, 22 Department of Physiology and Biophysics, University of Mississippi Medical Center, Jackson, Mississippi, United States of America, 23 Department of Internal Medicine and Endocrinology, Vejle Hospital, Vejle, Denmark, 24 Department of Clinical Biochemistry, Vejle Hospital, Vejle, Denmark, 25 Institute of Regional Health Research, University of Southern Denmark, Odense, Denmark, 26 Foundation for Research in Health, Exercise and Nutrition, Kuopio Research Institute of Exercise Medicine, Kuopio, Finland, 27 Division of Cardiovascular and Diabetes Medicine, Medical Research Institute, Ninewells Hospital and Medical School, Dundee, United Kingdom, 28 Department of Public Health and Caring Sciences, Geriatrics, Uppsala University, Uppsala, Sweden, 29 Department of Clinical Experimental Research, Glostrup University Hospital, Glostrup, Denmark, 30 Department of Clinical Medicine, Faculty of Health and Medical Sciences, University of Copenhagen, Copenhagen, Denmark, 31 Research Centre for Prevention and Health, Glostrup University Hospital, Glostrup, Denmark, 32 Department of Social Services and Health Care, Jakobstad, Finland, 33 Folkhälsan Research Centre, Helsinki, Finland, 34 Department of Endocrinology, Helsinki University Central Hospital, Helsinki, Finland, 35 Steno Diabetes Center, Gentofte, Denmark, 36 Faculty of Medicine, University of Aalborg, Aalborg, Denmark, 37 Faculty of Health Sciences, Institute of Clinical Medicine, Internal Medicine, University of Eastern Finland, Kuopio, Finland, 38 Kuopio University Hospital, Kuopio, Finland, 39 Institute of Public Health and Clinical Nutrition, University of Eastern Finland, Kuopio, Finland, 40 National Institute for Health and Welfare, Helsinki, Finland, 41 Clinical Research Centre, Centre for Molecular Medicine, Ninewells Hospital and Medical School, Dundee, United Kingdom, 42 Pat Macpherson Centre for Pharmacogenetics and Pharmacogenomics, Medical Research Institute, Ninewells Hospital and Medical School, Dundee, United Kingdom, 43 Medical Genomics and Metabolic Genetics Branch, National Human Genome Research Institute, National Institutes of Health, Bethesda, Maryland, United States of America, 44 Department of Genetics, University of North Carolina at Chapel Hill, Chapel Hill, North Carolina, United States of America, 45 Cedars-Sinai Diabetes and Obesity Research Institute, Los Angeles, California, United States of America, 46 Department of Medical Sciences, Molecular Epidemiology and Science for Life Laboratory, Uppsala University, Uppsala, Sweden, 47 Department of Medical Sciences, Uppsala University, Uppsala, Sweden, 48 Diabetes Research Group, King Abdulaziz University, Jeddah, Saudi Arabia, 49 Instituto de Investigacion Sanitaria del Hospital Universitario LaPaz (IdiPAZ), University Hospital LaPaz, Autonomous University of Madrid, Madrid, Spain, 50 Center for Vascular Prevention, Danube University Krems, Krems, Austria, 51 Diabetes Prevention Unit, National Institute for Health and Welfare, Helsinki, Finland, 52 Faculty of Health Sciences, University of Southern Denmark, Odense, Denmark, 53 Department of Physiology & Biophysics, Keck School of Medicine, University of Southern California, Los Angeles, California, United States of America, 54 Department of Preventive Medicine, Keck School of Medicine, University of Southern California, Los Angeles, California, United States of America, 55 Diabetes and Obesity Research Institute, Keck School of Medicine, University of Southern California, Los Angeles, California, United States of America, 56 Department of Genomics of Common Disease, School of Public Health, Imperial College London, London, United Kingdom, 57 National Heart, Lung, and Blood Institute's Framingham Heart Study, Framingham, Massachusetts, United States of America, 58 Department of Biostatistics, Boston University School of Public Health, Boston, Massachusetts, United States of America, 59 Oxford NIHR Biomedical Research Centre, Oxford University Hospitals Trust, Oxford, United Kingdom, 60 Diabetes Research Center (Diabetes Unit), Department of Medicine, Massachusetts General Hospital, Boston, Massachusetts, United States of America, 61 Department of Medicine, Harvard Medical School, Boston, Massachusetts, United States of America, 62 Center for Human Genetic Research, Department of Medicine, Massachusetts General Hospital, Boston, Massachusetts, United States of America, 63 Department of Biostatistics, University of Liverpool, Liverpool, United Kingdom, 64 Estonian Genome Centre, University of Tartu, Tartu, Estonia, 65 Department of Biology, Massachusetts Institute of Technology, Cambridge, Massachusetts, United States of America, 66 Department of Genetics, Harvard Medical School, Boston, Massachusetts, United States of America, 67 General Medicine Division, Massachusetts General Hospital and Department of Medicine, Harvard Medical School, Boston, Massachusetts, United States of America

¶ Members of both consortia are listed in the Acknowledgments.

‡ These authors contributed equally to this work.

\* [celi@well.ox.ac.uk](mailto:celi@well.ox.ac.uk) (CML); [anna.gloyn@drf.ox.ac.uk](mailto:anna.gloyn@drf.ox.ac.uk) (ALG)

of Finland (contract 124243), the Finnish Heart Foundation, the Finnish Diabetes Foundation, Tekes (contract 1510/31/06), and the Commission of the European Community (HEALTH-F2-2007-201681), and the US National Institutes of Health grants DK093757, DK072193, DK062370, and 1Z01HG000024. The FUSION study was supported by DK093757, DK072193, DK062370, and 1Z01HG000024. Genotyping of the METSIM and DPS studies was conducted at the Genetic Resources Core Facility (GRCF) at the Johns Hopkins Institute of Genetic Medicine. VS is funded by the Finnish Foundation for Cardiovascular Research and the Academy of Finland (grant # 139635). The FIN-D2D 2007 study has been financially supported by the hospital districts of Pirkanmaa, South Ostrobothnia, and Central Finland, the Finnish National Public Health Institute (current National Institute for Health and Welfare), the Finnish Diabetes Association, the Ministry of Social Affairs and Health in Finland, the Academy of Finland (grant number 129293), Commission of the European Communities, Directorate C-Public Health (grant agreement no. 2004310) and Finland's Slottery Machine Association. The DPS has been financially supported by grants from the Academy of Finland (117844 and 40758, 211497, and 118590 (MU); The EVO funding of the Kuopio University Hospital from Ministry of Health and Social Affairs (5254), Finnish Funding Agency for Technology and Innovation (40058/07), Nordic Centre of Excellence on 'Systems biology in controlled dietary interventions and cohort studies, SYSDIET (070014), The Finnish Diabetes Research Foundation, Yrjö Jahns-son Foundation (56358), Sigrid Juselius Foundation and TEKES grants 70103/06 and 40058/07. The DR's EXTRA Study was supported by grants to RR by the Ministry of Education and Culture of Finland (627;2004-2011), Academy of Finland (102318; 123885), Kuopio University Hospital, Finnish Diabetes Association, Finnish Heart Association, Päivikki and Sakari Sohlberg Foundation and by grants from European Commission FP6 Integrated Project (EXGENESIS); LSHM-CT-2004-005272, City of Kuopio and Social Insurance Institution of Finland (4/26/2010). The Broad Genomics Platform for genotyping of the FIN-D2D 2007, FINRISK 2007, DR'sEXTRA, FUSION, and PPP studies. The funders had no role in study design, data collection and analysis, decision to publish, or preparation of the manuscript.

**Competing Interests:** The authors have declared that no competing interests exist.

## Abstract

Genome wide association studies (GWAS) for fasting glucose (FG) and insulin (FI) have identified common variant signals which explain 4.8% and 1.2% of trait variance, respectively. It is hypothesized that low-frequency and rare variants could contribute substantially to unexplained genetic variance. To test this, we analyzed exome-array data from up to 33,231 non-diabetic individuals of European ancestry. We found exome-wide significant ( $P < 5 \times 10^{-7}$ ) evidence for two loci not previously highlighted by common variant GWAS: *GLP1R* (p.Ala316Thr, minor allele frequency (MAF)=1.5%) influencing FG levels, and *URB2* (p.Glu594Val, MAF = 0.1%) influencing FI levels. Coding variant associations can highlight potential effector genes at (non-coding) GWAS signals. At the *G6PC2/ABCB11* locus, we identified multiple coding variants in *G6PC2* (p.Val219Leu, p.His177Tyr, and p.Tyr207Ser) influencing FG levels, conditionally independent of each other and the non-coding GWAS signal. *In vitro* assays demonstrate that these associated coding alleles result in reduced protein abundance via proteasomal degradation, establishing *G6PC2* as an effector gene at this locus. Reconciliation of single-variant associations and functional effects was only possible when haplotype phase was considered. In contrast to earlier reports suggesting that, paradoxically, glucose-raising alleles at this locus are protective against type 2 diabetes (T2D), the p.Val219Leu *G6PC2* variant displayed a modest but directionally consistent association with T2D risk. Coding variant associations for glycemic traits in GWAS signals highlight *PCSK1*, *RREB1*, and *ZHX3* as likely effector transcripts. These coding variant association signals do not have a major impact on the trait variance explained, but they do provide valuable biological insights.

## Author Summary

Understanding how FI and FG levels are regulated is important because their derangement is a feature of T2D. Despite recent success from GWAS in identifying regions of the genome influencing glycemic traits, collectively these loci explain only a small proportion of trait variance. Unlocking the biological mechanisms driving these associations has been challenging because the vast majority of variants map to non-coding sequence, and the genes through which they exert their impact are largely unknown. In the current study, we sought to increase our understanding of the physiological pathways influencing both traits using exome-array genotyping in up to 33,231 non-diabetic individuals to identify coding variants and consequently genes associated with either FG or FI levels. We identified novel association signals for both traits including the receptor for GLP-1 agonists which are a widely used therapy for T2D. Furthermore, we identified coding variants at several GWAS loci which point to the genes underlying these association signals. Importantly, we found that multiple coding variants in *G6PC2* result in a loss of protein function and lower fasting glucose levels.

## Introduction

Large-scale GWAS of non-diabetic individuals have successfully identified > 60 loci associated with FG and FI levels, many of which are also implicated in susceptibility to T2D [1, 2, 3, 4].

Despite these successes, lead SNPs at GWAS loci have modest effects and cumulatively explain only a small proportion of the trait variance in non-diabetic individuals. By design, GWAS have focused predominantly on the interrogation of common variants, defined here to have  $MAF > 5\%$ . Most of the identified variants are non-coding, complicating attempts to establish the molecular consequences of these GWAS loci. We therefore chose to extend discovery efforts to coding variants, particularly those of lower frequency that have not been well captured by GWAS genotyping and imputation. We aimed both to identify novel coding loci for FG and FI, and to evaluate the role of coding variants at known GWAS loci, thereby expecting to highlight causal transcripts and to facilitate characterization of the molecular mechanisms influencing glycemic traits and T2D susceptibility.

## Results

We analyzed 33,231 (FG) and 30,825 (FI) non-diabetic individuals from 14 studies of European ancestry, all genotyped with the Illumina HumanExome BeadChip (see [URLs](#)). Characteristics of the contributing studies and study participants are summarized in [S1-S2 Tables](#). Body mass index (BMI) adjustment has been shown to increase power to detect association with these glycemic traits [4], and in our study samples, BMI accounted for 6.1% and 24.6% of phenotypic variance of FG and FI, respectively. Consequently, within each study, we calculated residuals for both traits after adjustment for BMI and other study-specific covariates ([S1 Table](#)). Study-specific inverse-rank normalized residuals were tested for single-variant association using a linear mixed model to account for relatedness and fine-scale genetic population sub-structure [5]. We also repeated the analysis using the untransformed residuals to obtain allelic effect sizes. We then combined the association summary statistics across studies using fixed-effect meta-analysis. We restricted our single-variant analysis to 106,489 variants that pass quality-control and are polymorphic in more than one study. We declared a single-variant trait association as exome-wide significant at  $P < 5 \times 10^{-7}$ , corresponding to Bonferroni correction for the ~100,000 polymorphic variants. We also carried out gene-based meta-analysis [6, 7] by using the sequence kernel association test (SKAT) [8] and a frequency-weighted burden test [9] applying four alternate variant masks which combine functional annotation and allele frequency thresholds. Full details of the variant masks are provided in the Methods. Gene-based tests take into account overall variant-load within a specified locus and therefore may have greater power than single-variant tests to detect associations with multiple rare and low-frequency causal alleles. We note that this advantage is likely to be less in exome-array analysis compared with the more complete ascertainment of variants possible with exome sequencing [10]. We declared gene-based association as exome-wide significant at  $P < 2.5 \times 10^{-6}$ , corresponding to Bonferroni correction for ~20,000 protein-coding genes in the genome.

### Coding variants influencing FG levels

Through single-variant analysis, we identified 12 coding variants (all of which were non-synonymous changes) associated with FG levels at exome-wide significance, two low-frequency and ten common ([S3 Table](#)). These variants mapped to seven loci, six of them previously implicated in FG regulation. The signals at known loci included previously-reported common coding variants driving GWAS signals at *GCKR* (p.Pro446Leu,  $MAF = 36.9\%$ ,  $P = 5.3 \times 10^{-18}$ ) and *SLC30A8* (p.Arg325Trp,  $MAF = 35.7\%$ ,  $P = 2.5 \times 10^{-10}$ ) [2, 11]. Three additional common coding variants associated with FG (in *C2orf16*, *GPNI*, and *SLC5A6*) were in moderate linkage disequilibrium (LD;  $r^2 = 0.2-0.4$ ) with the p.Pro446Leu *GCKR* variant. Their associations were eliminated after conditioning on p.Pro446Leu, the known functional GWAS variant in this region [12, 13], indicating no causal role for these additional variants on FG regulation ([S3 Table](#)).

The sixth variant influencing FG levels at exome-wide significance was a low-frequency non-synonymous change which did not map to any previously known FG-influencing locus: p.Ala316Thr at *GLP1R* (MAF = 1.5%,  $P = 4.6 \times 10^{-7}$ ; [Table 1](#) and [S1B Fig.](#)). This variant showed modest association ( $P = 1.3 \times 10^{-4}$ ) in a previous GWAS meta-analysis of FG [[3](#)], which partially overlaps with the present study, but now achieves exome-wide significance. The alanine residue at p.Ala316Thr is conserved across vertebrates, and the threonine substitution is predicted to be “possibly damaging” by *in silico* mutation analysis ([S4 Table](#)). GLP-1R (glucagon-like peptide 1 receptor) is the receptor for the incretin hormone glucagon-like peptide 1 (GLP1), which is released from enteroendocrine cells after food ingestion and potentiates insulin secretion. GLP1 receptor agonists are an established treatment for T2D [[14](#)].

The six remaining coding variants all map to known FG-associated GWAS loci, but have not previously been implicated as playing a causal role. These include two variants in the islet-specific glucose-6-phosphatase catalytic subunit (*G6PC2*) gene at the *G6PC2/ABCB11* locus: p.Val219Leu, a common variant ( $P = 6.0 \times 10^{-9}$ , MAF = 48.1%), and p.His177Tyr, a low-frequency variant ( $P = 3.1 \times 10^{-8}$ , MAF = 0.8%; [S2A Fig.](#)). These variants remained significantly associated (p.Val219Leu,  $P_{\text{conditional}} = 7.1 \times 10^{-10}$  and p.His177Tyr,  $P_{\text{conditional}} = 1.3 \times 10^{-11}$ ) with FG after conditioning on the intronic lead GWAS SNP, rs560887 ([Table 1](#) and [S2B Fig.](#)). Conversely, conditioning on the coding variants did not completely abolish the association signal at the lead GWAS SNP ( $P_{\text{unconditional}} = 6.4 \times 10^{-78}$ ;  $P_{\text{conditional on His177Tyr}} = 3.1 \times 10^{-55}$ ,  $P_{\text{conditional on Val219Leu}} = 1.2 \times 10^{-58}$ , and  $P_{\text{conditional on His177Tyr and Val219Leu}} = 2.1 \times 10^{-83}$ ), confirming that the effect of the coding variants were largely independent of the lead GWAS SNP. Furthermore, the coding variants each remained associated with FG at exome-wide significance even after conditioning on both the lead GWAS SNP and the other coding variant, providing clear evidence of at least three association signals at this locus ([Table 1](#) and [S2C-S2D Fig.](#)). These results are consistent with a recent study in Finnish individuals that reported a FG association signal at p.His177Tyr [[15](#)], but we extend that finding by demonstrating exome-wide significant association of multiple coding variants after conditioning on other associated variants in the region.

*G6PC2* was also the only one of the 14,465 genes with multiple exome-array variants to demonstrate evidence of significant association with FG levels with any mask in gene-based tests ([Table 2](#)). In fact, for this gene we observed significant association with FG levels for all the masks encompassing multiple variants. These gene-based associations remained significant even after Bonferroni correction for testing of four different variant masks. Step-wise conditional analyses, adjusting for each variant included in the respective masks, revealed that the gene-based signals were primarily driven by two variants: p.His177Tyr and p.Tyr207Ser ([S5 Table](#)). The protein-truncating variant (PTV) p.Arg283\*, which introduces a stop mutation in the last exon of the gene, showed no association with FG levels in single-variant or gene-based analyses. The most likely explanation is that this variant evades nonsense mediated decay (as is usual for PTV in the last exon) and that the truncated protein (missing only the terminal 72 amino acid residues) retains normal functional activity [[16](#)]. Due to its high allele frequency, and annotation as benign across multiple annotation algorithms, p.Val219Leu was not included in any of the gene-based variant masks ([S6 Table](#)). However, based on the single-variant it also has independent effects, with the result that we have three coding variants in *G6PC2* (p.His177Tyr, p.Tyr207Ser, and p.Val219Leu) influencing FG levels. These three variants explain an additional 0.2% of the phenotypic variance in FG beyond that explained by the GWAS variant rs560887, bringing the total variance explained by this locus to 1.1%. However, we recognize that this estimate has been obtained in the discovery cohort and consequently might be inflated.

Both *G6PC2* and *ABCB11* have been considered strong biological candidate genes for glucose regulation, and advocated as potential effector transcripts at this GWAS locus [[17](#), [18](#)].

**Table 1. Coding variants associated with FG and FI levels at exome-wide significance.**

SNP	Gene	Chr	Variant	Minor/Major allele <sup>a</sup>	MAF <sup>b</sup> (%)	N	I <sup>2</sup>	Cochran's Q	P_het	Unconditional		Conditional	
										P <sup>c</sup>	$\hat{\beta}$ (SE)	P	$\hat{\beta}$ (SE)
<b>Fasting glucose</b>													
rs138726309	G6PC2	2	p.His177Tyr	T/C	0.8	32,430	27.2	16.49	0.17	3.1×10 <sup>-8</sup>	-0.102 (0.020)	<sup>d</sup> 1.3×10 <sup>-11</sup>	-0.125 (0.020)
rs492594	G6PC2	2	p.Val219Leu	C/G	48.1	33,231	0	6.68	0.92	6.0×10 <sup>-9</sup>	0.020 (0.004)	<sup>e</sup> 3.5×10 <sup>-10</sup>	-0.115 (0.020)
rs6234	PCSK1	5	p.Gln665Glu	C/G	27.9	33,231	0	8.58	0.80	3.0×10 <sup>-8</sup>	-0.022 (0.004)	<sup>d</sup> 7.1×10 <sup>-10</sup>	-0.034 (0.005)
rs6235	PCSK1	5	p.Ser690Thr	G/C	27.9	33,231	0	8.65	0.80	4.1×10 <sup>-8</sup>	-0.022 (0.004)	<sup>f</sup> 6.5×10 <sup>-13</sup>	-0.032 (0.005)
rs35742417	RREB1	6	p.Ser1554Tyr	A/C	21.1	33,230	0	12.28	0.51	8.4×10 <sup>-9</sup>	-0.024 (0.004)	-	-
rs10305492	GLP1R	6	p.Ala316Thr	A/G	1.5	33,230	0	11.29	0.59	4.6×10 <sup>-7</sup>	-0.073 (0.015)	-	-
rs17265513	ZHX3	20	p.Asn310Ser	C/T	23.8	33,229	0	12.01	0.53	3.9×10 <sup>-7</sup>	0.022 (0.004)	-	-
<b>Fasting insulin</b>													
rs141203811	URB2	1	p.Glu594Val	T/A	0.1	21,130	59.9	9.98	0.04	3.1×10 <sup>-7</sup>	0.282 (0.066)	-	-

Chr: chromosome. MAF: minor allele frequency. N: number of samples analyzed. I<sup>2</sup>: heterogeneity measure in %. P\_het: P-value for Cochran's Q statistic.  $\hat{\beta}$ : regression coefficient estimates. SE: standard error.

<sup>a</sup>Alleles are aligned to the forward strand of NCBI Build 37.

<sup>b</sup>Sample-size weighted average minor allele frequency percentage across all studies.

<sup>c</sup>Sample-size Z-score weighted P values are obtained with derived inverse normalized residuals of mmol/L of fasting glucose and pmol/L of natural log-transformed fasting insulin after adjustment for age, sex, and BMI.

Effect size estimates are reported for the minor allele in mmol/L of fasting glucose and pmol/L of natural log-transformed fasting insulin after adjustment for age, sex, and BMI.

<sup>d</sup>After adjusting for the common lead non-coding GWAS SNP rs560887.

<sup>e</sup>After adjusting for the common lead non-coding GWAS SNP rs560887 and the common non-synonymous variant p.Val219Leu.

<sup>f</sup>After adjusting for the common lead non-coding GWAS SNP rs560887 and the low-frequency non-synonymous variant p.His177Tyr.

doi:10.1371/journal.pgen.1004876.t001

However, none of the 21 coding variants in *ABCB11* that passed quality control (twelve rare, eight low-frequency, and one common) were significantly associated with FG levels, nor was there an aggregate association signal ( $P > 0.05$ ). Together, our genetic data provide compelling evidence that *G6PC2* is an effector gene for FG regulation at this GWAS locus, with p.His177Tyr, p.Tyr207Ser, and p.Val219Leu as likely causal coding variants.

### Loss of G6PC2 function leads to a reduction in FG levels

The phenotypic impact of these coding variants might, we reasoned, be influenced by the action of the non-coding GWAS variants on *G6PC2* transcript regulation. Haplotype analysis of the four variants (rs560887, p.His177Tyr, p.Tyr207Ser, and p.Val219Leu) in a subset of 4,442 individuals revealed that the C allele encoding Leu219 was carried exclusively in *cis* with the glucose-raising allele at the GWAS SNP (Fig. 1). The estimated effect size of p.Val219Leu was considerably smaller ( $\hat{\beta} = 0.020 \pm 0.004$  mmol/L per allele) than rs560887 ( $\hat{\beta} = 0.070 \pm 0.004$  mmol/L per allele). These observations together explain the reversal in direction of effect of the Leu219 allele between conditional and unconditional analyses and indicate that, whilst Leu219

**Table 2. G6PC2 gene-based association with FG levels using SKAT and BURDEN test**

Mask	Number of variants	Average allele frequency (%)	$P_{SKAT}$	$P_{BURDEN}$
<b>Mask 1:</b> PTV-only	0	-	-	-
<b>Mask 2:</b> PTV + missense	15	0.10	$1.8 \times 10^{-13}$	$4.1 \times 10^{-16}$
<b>Mask 3:</b> PTV + NS <sub>strict</sub>	4	0.28	$3.6 \times 10^{-12}$	$5.1 \times 10^{-13}$
<b>Mask 4:</b> PTV + NS <sub>broad</sub>	12	0.12	$2.0 \times 10^{-13}$	$1.2 \times 10^{-17}$

PTV: protein-truncating variant; NS: non-synonymous variants; NS<sub>strict</sub>: missense variant predicted to be deleterious by all five annotation algorithms (PolyPhen2-HumDiv, PolyPhen2-HumVar, LRT, MutationTaster, and SIFT); NS<sub>broad</sub>: missense variant predicted to be deleterious by at least one of the five annotation algorithms.

Mask 1: "PTV-only" encompassed only one variant.

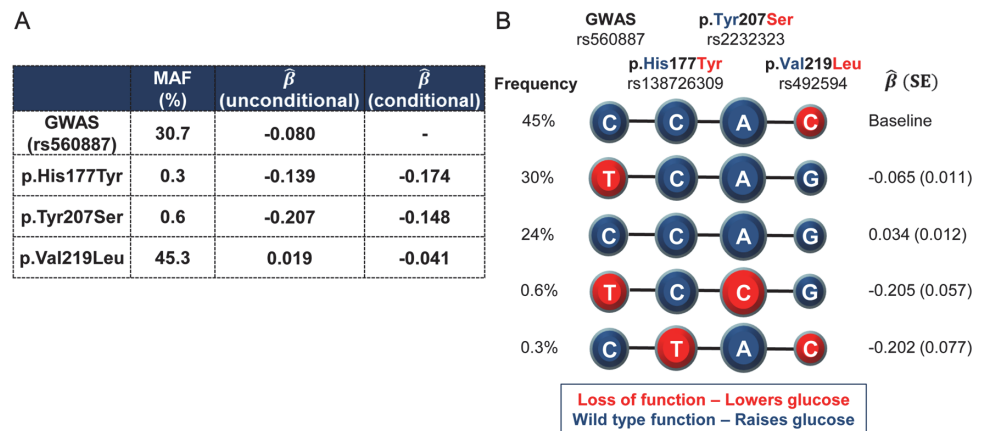
Mask 2 consists of PTVs and all missense variants with MAF < 1%; Mask 3 consists of PTVs and missense variants predicted to be deleterious by five annotation algorithms without any upper MAF bounds; Mask 4 consists of variants in Mask 3 plus any missense variant with MAF < 1% predicted to be deleterious by at least one of the five annotation algorithms.

Allele counts of the 15 non-synonymous variants at G6PC2: p.Ser324Pro (56), p.Leu310Phe (42), p.Arg283\* (71), p.Ile273Val (2), p.Phe256Leu (9), p.Ile230Thr (14), p.Tyr207Ser (338), p.His177Tyr (502), p.Ile171Thr (81), p.Ile171Val (4), p.Ala119Val (23), p.Asn68Ile (2), p.Ile63Thr (6), p.Ile38Leu (1), p.Ser30Phe (23).

doi:10.1371/journal.pgen.1004876.t002

appears to have a glucose-raising effect in single-variant analyses, the molecular consequence of Leu219 is likely to be lower glucose (Table 1). The minor alleles of the other two coding variants (p.His177Tyr, p.Tyr207Ser) also displayed glucose-lowering effects in conditional analyses. Given the role of G6PC2 in beta-cells we predicted that these would also be associated with reduced G6PC2 function, a hypothesis that we set out to test with a series of *in vitro* studies.

First, we generated recombinant FLAG-tagged G6PC2 constructs to investigate the impact of these variants on protein expression and subsequent cellular localization. Transient transfection of all three constructs showed a marked reduction in G6PC2 protein levels. In HEK293



**Figure 1. Haplotypes of the lead non-coding GWAS SNP rs560887 and the three coding variants.** rs138726309 (p.His177Tyr), rs2232323 (p.Tyr207Ser), and rs492594 (p.Val219Leu), obtained from 4,442 unrelated individuals from the Oxford Biobank. (A) Percentage minor allele frequency (MAF) and effect size estimates ( $\hat{\beta}$ ) of the four variants reported for the minor allele in mmol/L of FG after adjustment for age, sex, and BMI. (B) Haplotypes of the four associated variants in G6PC2 revealed that the glucose-lowering Leu219 allele was carried exclusively in cis with the glucose-raising allele at the GWAS SNP. Wild-type, glucose-raising alleles are circled in blue and the mutant, glucose-lowering alleles are circled in red. Diameter of the circle is proportional to the effect size estimates. Haplotype association was performed with FG derived residuals (after adjustment for age, sex, and BMI) using the most frequent haplotype as baseline.

doi:10.1371/journal.pgen.1004876.g001



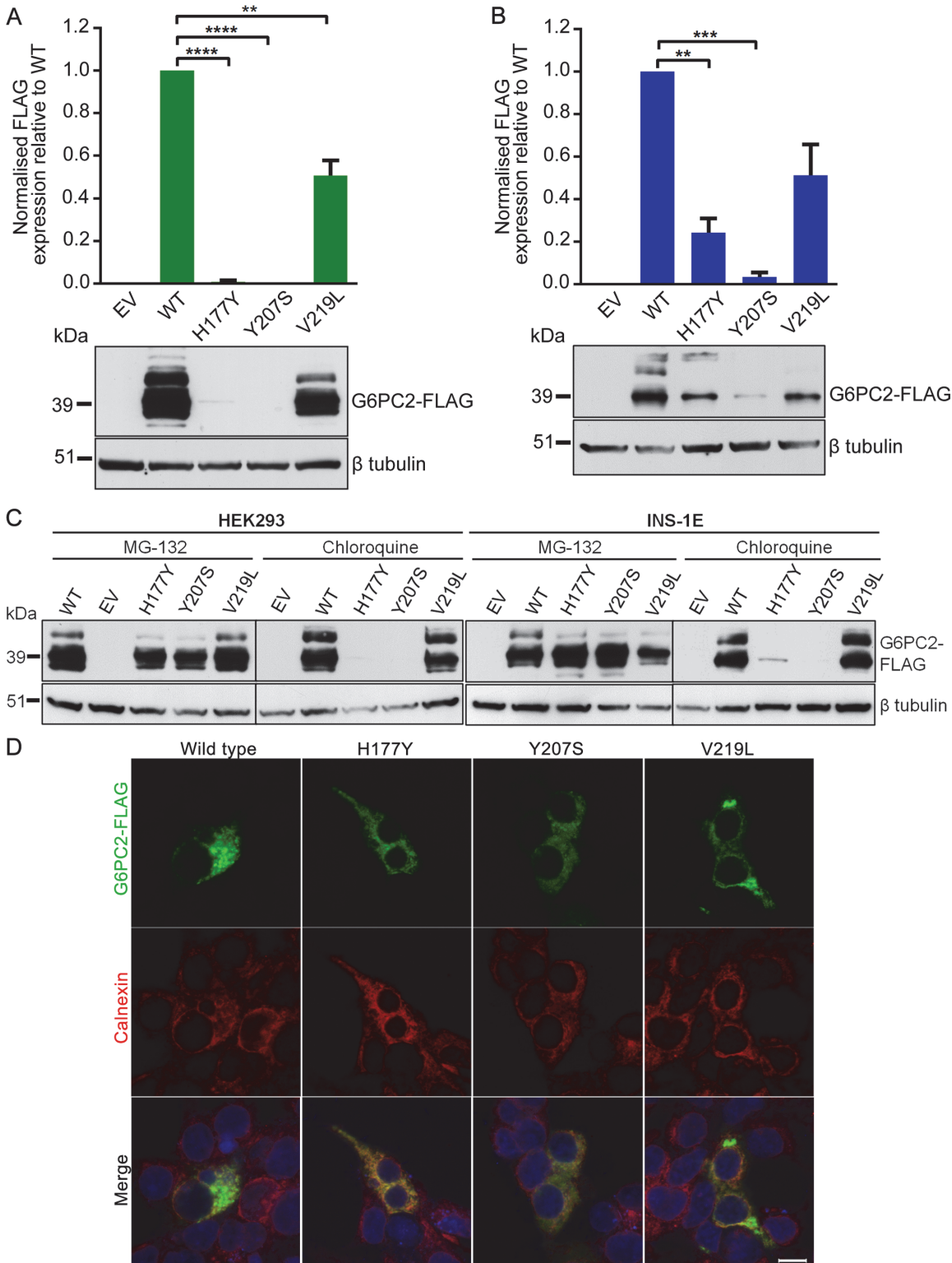
cells, protein levels were decreased by 99% (p.His177Tyr), 100% (p.Tyr207Ser), and 49% (p.Val219Leu), when compared to wild type (defined for this study as the major allele for each of these variants) *G6PC2* (Fig. 2A). Reduced protein expression was also confirmed in the rat pancreatic  $\beta$ -cell line INS-1E (76%, 97%, and 49% reduction, respectively; Fig. 2B). The functional impact of the variant proteins mirrored our genetic observations; the variant protein with the p.Val219Leu substitution, which has only a modest effect on FG, was present at higher levels in both HEK293 and INS-1E cells than the p.His177Tyr and p.Tyr207Ser proteins, both of which have larger impacts on FG levels.

Our functional results for p.His177Tyr and p.Tyr207Ser are concordant with data from the *in silico* mutation assessment tools SIFT and PolyPhen-2, which predicted these variants as deleterious (S4 Table). In contrast, the common p.Val219Leu variant was predicted to be benign, whereas *in vitro* characterization clearly shows a significant reduction in protein expression, demonstrating the importance of experimentally evaluating coding variants for functional consequences. The observed decrease in *G6PC2* protein levels caused by the FG-associated variants is also directionally consistent with the evidence indicating that the non-coding GWAS SNP rs560887 may have effects on pre-mRNA splicing [19].

Next, we used specific inhibitors of the proteasomal and lysosomal pathways (MG-132 and chloroquine, respectively) to demonstrate that the three *G6PC2* variant proteins with p.His177Tyr, p.Tyr207Ser, and p.Val219Leu substitutions were predominantly degraded through the ubiquitin-proteasome pathway, an important cellular mechanism for clearing misfolded proteins. Protein expression could be rescued in the presence of MG-132 but not chloroquine (Fig. 2C). We also evaluated the impact of the variants on cellular localization of *G6PC2* to the endoplasmic reticulum (ER) using calnexin as an ER marker. The variant proteins displayed similar localization patterns to wild type *G6PC2* (Fig. 2D). Our finding that loss of *G6PC2* function leads to a reduction in FG levels in humans is consistent with rodent data, which show that *G6pc2* knockout mice have a ~15% decrease in FG levels [20]. Hence, our data, linking genetic associations with reduced protein function, indicate that normal *G6PC2* function is critical for glucose homeostasis and that these variants most likely impact FG levels through altered intracellular catalysis of glucose-6-phosphate to glucose and inorganic phosphate in pancreatic  $\beta$ -cells.

## Impact of the functional *G6PC2* variants on other related quantitative traits and disease outcomes

We evaluated the impact of these functional *G6PC2* variants on other related quantitative traits and disease outcomes to gain further insights into the metabolic processes involved (S7 Table). None of the variants showed any evidence of association with FI levels ( $P > 0.1$ ) in 30,825 non-diabetic individuals analyzed in the present study. No association of the lead *G6PC2* GWAS variant with T2D risk has previously been shown in Europeans [2, 21, 22]. However, in a meta-analysis of exome-array data from 28,344 T2D cases and 51,801 controls of European ancestry (including the 33,231 controls used in the present meta-analyses), the common coding variant, p.Val219Leu, showed modest association with T2D risk ( $P = 0.0011$ ; odds ratio = 1.05, 95% confidence interval 1.02–1.06). The G allele encoding Val219, which displayed a glucose-raising effect, conferred an increased risk of disease. In contrast to the observations in FG single-variant analysis, the direction of effect on T2D at this variant was unchanged, even after conditioning on the GWAS variant. This is consistent with a small case-control study in 3,676 individuals of Chinese ancestry where a nominal association ( $P = 0.0062$ ) with T2D risk was reported [23]. Our finding provides evidence that *G6PC2* is critical not only for controlling FG levels in the physiological range, but that impairment of its function contributes to T2D pathogenesis. The effect on T2D risk is modest given the impact of the p.Val219Leu variant on FG levels but the effect size is



**Figure 2. Functional characterization of wild type and variant G6PC2 proteins.** (A) Expression levels in HEK2993 and (B) INS-1E cells were determined by western blot and densitometry analysis. The multiple bands on the western blot are likely to represent glycosylated G6PC2 protein products. Data are presented as mean  $\pm$  standard error of the mean for at least three independent experiments. Significant differences are indicated as \*\*  $P < 0.01$ ; \*\*\*  $P < 0.001$ ; \*\*\*\*  $P < 0.0001$ . EV, empty vector; WT, wild type. (C) Expression levels in HEK2993 and INS-1E cells in the presence of proteasomal inhibitor MG-132 or lysosomal inhibitor chloroquine were determined by western blot. (D) Cellular localization in HEK2993 cells was assessed by immunofluorescence

microscopy. Cells were double immunostained for FLAG tag (green) and calnexin (red), and merged images with a DNA stain (blue) are shown. Images were taken with laser settings that were optimized separately for each sample. Scale bar, 10 $\mu$ m.

doi:10.1371/journal.pgen.1004876.g002

similar to that reported for the common non-coding variant GWAS signal at *GCK* [2]. *GCK* encodes the glycolytic enzyme glucokinase which catalyzes the reverse reaction to G6PC2. These observations are consistent with defects in glucose sensing rather than  $\beta$ -cell function.

### Likely effector transcripts at established FG GWAS loci

Of the 12 coding variants significantly influencing FG levels, we have discussed eight above. The four remaining signals mapped to three additional established FG-associated GWAS regions and support the candidacy of particular effector transcripts at these loci. Two map to *PCSK1* (p.Gln665Glu, MAF = 27.9%,  $P = 3.0 \times 10^{-8}$ ; p.Ser690Thr, MAF = 27.9%,  $P = 4.1 \times 10^{-8}$ ), and have previously been proposed as likely causal variants at this GWAS locus because of strong LD with the lead non-coding GWAS SNP (rs4869272) in Europeans ( $r^2 = 0.81$ ) [3]. These two variants are in complete LD with each other ( $r^2 = 1$ ) and both have residual association signals after adjusting for the lead GWAS SNP (p.Gln665Glu,  $P_{\text{conditional}} = 8.1 \times 10^{-3}$ ; p.Ser690Thr,  $P_{\text{conditional}} = 0.01$ ) (Table 1 and S3 Table). Conversely, conditioning on the coding variants completely abolished the association signal at the GWAS SNP ( $P_{\text{unconditional}} = 7.2 \times 10^{-7}$ ;  $P_{\text{conditional on Gln665Glu}} = 0.24$ ,  $P_{\text{conditional on Ser690Thr}} = 0.25$ , and  $P_{\text{conditional on Gln665Glu and Ser690Thr}} = 0.34$ ). Although we were unable to statistically distinguish between these two coding variants, there is suggestive *in vitro* evidence that the p.Gln665Glu variant may decrease PCSK1 activity whilst p.Ser690Thr behaved as wild-type [24], supporting the former as the most likely causal variant at the *PCSK1* locus. *PCSK1* encodes prohormone convertase 1/3 (PC1/3), a calcium-dependent serine endoprotease, which is essential for the conversion of a variety of prohormones, including proinsulin and proglucagon, to their bioactive forms.

The penultimate variant was in *ZHX3* (p.Asn310Ser, MAF = 23.8%,  $P = 3.9 \times 10^{-7}$ ) which maps to the *TOPI* GWAS locus influencing FG levels [4]. Adjustment for p.Asn310Ser in a conditional analysis eliminated the association signal at the non-coding GWAS lead SNP rs6072275 ( $P_{\text{unconditional}} = 2.5 \times 10^{-5}$  and  $P_{\text{conditional}} = 0.33$ ), supporting *ZHX3* as the plausible causal gene at this locus (Table 1 and S3 Table). *ZHX3* (zinc fingers and homeoboxes 3) encodes a transcriptional repressor which belongs to a protein family known to regulate gene expression in the kidney podocytes and plays roles in both lipoprotein metabolism and triglyceride regulation in mice [25, 26].

The final variant was in *RREB1* (p.Ser1554Tyr, MAF = 21.1%,  $P = 8.4 \times 10^{-9}$ ) which resides in the *RREB1/SSRI* GWAS locus influencing FG levels [4] and T2D risk [27] (Table 1). We were unable to explore the relationship between this association signal and the lead FG (rs17762454) or T2D (rs9502570) GWAS SNPs at this locus as neither the variants themselves, nor a close proxy ( $r^2 > 0.80$ ), was present on the exome-array. Based on European haplotypes from the 1000 Genomes Project, the coding variant was more strongly correlated ( $r^2 = 0.59$ ) with rs9502570 as compared to rs17762454 ( $r^2 = 0.08$ ), which might indicate multiple FG association signals in this region. These data point to a likely functional role for *RREB1* at this locus, although further studies are needed to confirm this hypothesis.

### Coding variants influencing FI levels

Turning to the analysis of FI, we identified six non-synonymous variants associated at exome-wide significance (one rare and five common). These mapped to four loci, three of them previously implicated in FI regulation (S3 Table). The single novel FI-influencing locus was

represented by a rare variant in *URB2* (p.Glu594Val, MAF = 0.1%,  $P = 3.1 \times 10^{-7}$ ; [Table 1](#) and [S1 Fig.](#)). The variant allele was observed in individuals across Europe, including UK, Denmark, Finland, and Sweden, and genotype calls across all cohorts passed visual inspection for clustering accuracy. Heterozygous genotypes ( $n = 6$ ) were 100% concordant for 3,999 individuals genotyped on the array that had also been exome sequenced ([S8 Table](#)). This variant has a relatively large effect, with each copy of the minor allele increasing FI level by 32%. *URB2* encodes ribosome biogenesis 2 homolog, which interacts with nuclear lamins [28]. The precise mechanistic role of *URB2* is still poorly understood, but conditions caused by defects in lamin genes (laminopathies), including familial partial lipodystrophy, can cause loss of adipose tissue, insulin resistance, and metabolic syndrome [29, 30].

The remaining five coding variants implicated in the FI analysis, included three previously-reported FI-associated common variants in *GCKR* (p.Pro446Leu,  $P = 8.1 \times 10^{-11}$ ), *PPARG* (p.Pro12Ala, MAF = 14.7%,  $P = 1.3 \times 10^{-7}$ ), and *COBLL1* (p.Asn939Asp, MAF = 11.3%,  $P = 6.7 \times 10^{-8}$ ) [3, 4]. The final two variants (in *C2orf16* and *GPN1*) also mapped within the *GCKR* FG/FI-associated GWAS locus, and their associations were eliminated after conditioning on the *GCKR* p.Pro446Leu variant as seen in FG analysis ([S3 Table](#)).

## Discussion

In the current study, we have examined the contribution of coding variants in influencing glycemic trait levels and identified significant associations at ten loci, highlighting multiple functional genes.

We have established a functional role for *G6PC2* in FG homeostasis and have identified two novel loci associated with glycemic traits: *GLP1R* and *URB2*. In three additional GWAS regions for FG, we have identified potentially causal coding variants, highlighting likely effector transcripts (*PCSK1*, *RREB1*, and *ZHX3*). In line with earlier observations, very few of the FG- and FI-associated loci identified impact T2D risk [4]. The exception in this study is the p.Val219Leu *G6PC2* variant, which showed a modest but directionally consistent association with T2D risk, in contrast to earlier reports suggesting that, paradoxically, glucose-raising alleles at this GWAS locus are protective against T2D [2].

Our results have a number of important implications for the design, analysis, and interpretation of association studies of coding variation. First, we have demonstrated that an appreciation of regional haplotypes is fundamental to understanding the relationship between genetic variation and gene function, phenotype, and disease. In this study, haplotype analysis was essential in resolving the apparent discrepancy between the observed phenotypic effect driven by the *G6PC2* C allele at the variant encoding Leu219 and our *in vitro* data. From a clinical genomics perspective, this example illustrates how interpretation of single-variant analyses can be misleading and that the explicit phase relationships of variants are important for the correct interpretation of allelic effects. Furthermore, they highlight the importance of considering the possible interactions between regulatory and coding variants on protein levels [31]. The haplotype analysis also allows us to define specific regional diploid haplotypes that differ markedly in glucose levels. This is particularly relevant to efforts to follow up these variants in human data, whether for *in vivo* physiology, or for cellular studies on biopsies or patient derived stem cells.

Second, we have highlighted some limitations of widely used *in silico* prediction programs in accurately evaluating the impact of genomic variation on protein function. Earlier studies have shown that filtering functional variants based on *in vitro* data can substantially improve the power to detect causal genes [32, 33]. When such data are not available, *in silico* predictions can be used to help identify variants of functional significance [10, 34]. However, as we have

demonstrated with the *G6PC2* p.Val219Leu variant, current *in silico* predictions are not always accurate and should be validated with *in vitro* functional analysis wherever possible.

We find little support for a widespread impact of rare or low-frequency coding variants in accounting for known common SNP FG- and FI-associated GWAS signals. However, given that exome-array genotyping does not capture the complete repertoire of coding variation throughout the genome, exome sequencing is still required to achieve a complete assessment of their impact on glycemic traits at all associated loci. It is also likely that analysis of non-coding regulatory variation will be necessary to elucidate the causal genes and functional roles of association signals observed in prior GWAS. However, our study provides clear examples of how the analysis of coding variation can aid interpretation of GWAS findings where biology was previously unclear, and highlights the promise of this approach to provide insights into the pathophysiology of common complex disease.

### Data availability

Summary statistics of single-variant and gene-based analyses are available at [http://www.diagram-consortium.org/Mahajan\\_2014\\_ExomeChip/](http://www.diagram-consortium.org/Mahajan_2014_ExomeChip/)

## Materials and Methods

### Ethics statement

All human research was approved by the relevant institutional review boards, and conducted according to the Declaration of Helsinki and all patients provided written informed consent. FIN-D2D 2007, DPS, DR's EXTRA, FINRISK 2007, FUSION, and METSIM were approved by the University of Michigan Health Sciences and Behavioral Sciences Institutional Review Board (ID: H03-00001613-R2). The Danish studies (Health 2006, Inter99, and Vejle Biobank) were approved by the local Ethical Committees of Capital Region (approval # H-3-2012-155, KA 98155 and KA-20060011) and Region of Southern Denmark (approval # S-20080097). The GoDARTS study was approved by EoS REC 09/S1402/44. The Twins UK study was approved by EC04/015. The OBB study was approved by South Central, Oxford C, 08/H0606/107+5, IRAS project 136602. The PIVUS study is approved by 00-419 and ULSAM study by 251/90 and 2007/338. The PPP study was approved by the Committee On the Use of Humans as Experimental Subjects at MIT (IRB 0912003615).

### Phenotypes

**Study participants.** FG was measured in mmol/L and FI in pmol/L. Individuals were excluded from the analysis if they had a physician diagnosis of diabetes, were on diabetes treatment (oral or insulin), or had a fasting plasma glucose concentration  $\geq 7$  mmol/L or  $\geq 11.1$  mmol/L following a 2-hour oral glucose tolerance test. Individual studies applied further sample exclusions, including for pregnancy, nonfasting measurements, and type 1 diabetes (S1 Table). Measures of fasting glucose made in whole blood were corrected to approximate plasma level by multiplying by 1.13 [35].

**Trait transformations and adjustment.** To achieve approximate normality of the traits within each study, FG and natural logarithm-transformed FI levels were adjusted for age, sex, BMI, and study specific covariates followed by inverse normalization of the residuals. Inverse normalized residuals were used as the dependent quantitative trait in genetic association models to calibrate type 1 error. Effect estimates were obtained using untransformed FG and natural logarithm-transformed FI levels after adjusting for age, sex, BMI, and study specific covariates.

## Genotyping and quality control

The Illumina HumanExome Beadchip array was genotyped by individual studies. This custom array was designed to facilitate large-scale genotyping of 247,870 mostly rare (MAF < 0.5%) and low-frequency (MAF 0.5–5%) protein altering variants selected from sequenced exomes and genomes of ~12,000 individuals (see [URLs](#)). Details of genotype calling and quality control are presented in [S1 Table](#). To confirm the genotyping quality of all the variants discussed in the manuscript, we compared the genotype calls in 2,312 to 4,000 individuals for which we have both exome-array genotypes and exome-sequence data ([S8 Table](#)). The results are highly concordant for all variants (99% heterozygous genotype concordance and 100% concordance observed for non-reference homozygotes). Call rate and Hardy-Weinberg equilibrium p-values for each variant are provided in [S9 Table](#).

## Association analysis

**Single-variant analysis.** We tested single variants for association with FG- and FI-derived inverse normalized residuals assuming an additive genetic model using a linear mixed model to account for relatedness with EMMAX [5]. Study-specific QQ plots and genomic lambdas are shown in the [S3 Fig](#). We repeated single-variant association analyses with untransformed FG and natural logarithm-transformed FI residuals to obtain effect estimates. We then combined the association summary statistics across studies by using a fixed-effects meta-analysis (sample size Z-score weighted) using METAL [36]. Genotype cluster plots of all variants described here were inspected visually in all studies.

**Single-variant conditional analysis.** Conditional analysis was performed to identify additional association signals at known or novel loci. The analysis included the genotypes of the lead variant(s) at the conditioning loci as covariate(s) in the regression analysis in EMMAX. We then performed meta-analysis of the association summary statistics across studies by using a fixed-effects meta-analysis (sample size Z-score weighted).

**Gene-based analysis.** For gene-based testing, we first computed single-variant score statistics and their covariance matrices for all polymorphic markers within each study. We then combined the single-variant score statistics from all studies using the Cochran-Mantel-Haenszel method and computed corresponding variance-covariance matrices centrally [6]. These variance-covariance matrices were used to compute gene-level statistics. We applied a frequency-weighted burden test which assumes variants have similar effect sizes and SKAT, a dispersion test that performs well when both protective and deleterious variants are present [8, 9]. Test-specific asymptotic distributions were used to evaluate significance. For gene-based analyses, we used only unrelated individuals ( $n = 32,223$  for FG and  $n = 29,848$  for FI) and included principal components as covariates to adjust for population structure. We generated four variant lists using frequency data and functional annotation. Variants were mapped to transcripts in Ensembl 66 (GRCh37.66). Using annotations from CHAoS v0.6.3, SnpEff v3.1, and VEP v2.7, we identified variants predicted to be protein-truncating (PTV; e.g. nonsense, frameshift, essential splice site) or protein-altering (e.g. missense, in-frame indel, non-essential splice site) in at least one mapped transcript (by at least one of the three algorithms) [37, 38]. We additionally used the procedure described by Purcell *et al.* to identify subsets of missense variants meeting “strict” or “broad” criteria for being deleterious, using annotation predictions from Polyphen2-HumDiv, PolyPhen2-HumVar, LRT, MutationTaster, and SIFT [10]. Masks 1 (“PTV-only”) and 3 (“PTV + NS<sub>strict</sub>”) are restricted to variants with predicted major effect on protein function, and, as a result, disproportionately favor inclusion of rare variants, whilst masks 2 (“PTV + missense”) and 4 (“PTV + NS<sub>broad</sub>”) are more permissive. In total, we tested 1,028, 14,465, 4,603, and 13,093 genes having at least two such variants in the above four

categories respectively. For gene-based tests reaching exome-wide significance, if the conditional analysis showed that the signal was driven by a single variant, we required the variant to achieve exome-wide significance in the single-variant test as well.

**Gene-based conditional analysis.** We performed conditional gene-level analysis to evaluate whether rare or low-frequency variants associated with the trait in single-variant analysis could account for or were due to a gene-based test association signal [6]. The genotypes of the variant(s) at the conditioning locus were included as covariate(s) in this analysis.

**Estimating phenotypic variance explained by SNPs.** We used a subset of Finnish samples (FIN-D2D 2007, DPS, DR's EXTRA, FINRISK 2007, and METSIM;  $n = 10,266$ ) to calculate variance explained by *G6PC2*. We ran a model regressing BMI adjusted FG on the four *G6PC2* variants: intronic GWAS lead SNP rs560887, p.His177Tyr (rs138726309), p.Tyr207Ser (rs2232323), and p.Val219Leu (rs492594), assuming an additive model (and adjusting for sex, age, age<sup>2</sup>, and study origin). A separate model was run excluding the GWAS SNP to determine the additional variance captured with the three coding variants.

**Power calculations.** We had >99.9% power to identify variants that explain >0.3% of the phenotypic variance and 80% power to detect coding variants that explain >0.1% of the phenotypic variance. To achieve >80% power for variants with MAF<0.05% would require effect sizes of at least 1 SD unit of residuals of mmol/L for FG and pmol/L for FI.

When we estimate power to detect association for aggregation tests, we make many assumptions: i) proportion of variants contributing to trait variation, ii) direction of effects, iii) number of variants aggregated, and iv) allele frequency distribution of the variants [34]. In this study, assuming 100% of the variants contribute to trait variation, we had >99.9% power to detect association for genes that explain >0.25% of the phenotypic variance and 80% to detect genes that explain >0.1% of the phenotypic variance using a burden test and >0.5% of the phenotypic variance using SKAT. In a less favorable scenario, for example assuming a gene explains 0.25% of the phenotypic variance, 25% of the variants contribute to trait variation, different directions of effect, 20 variants tested, and variants sampled from the reported allele frequency distribution in the exome-array design, power to detect association in this study may be near 0% for a burden test and 63% for SKAT [34].

**Haplotype analysis.** In 4,442 individuals from the Oxford Biobank, we used an expectation-maximization (EM) algorithm to obtain the posterior distribution of haplotypes consistent with the observed genotypes at four *G6PC2* variants: intronic GWAS lead SNP rs560887, p.His177Tyr (rs138726309), p.Tyr207Ser (rs2232323), and p.Val219Leu (rs492594). Haplotype association with FG- and FI-derived residuals (after adjustment for age, sex, and BMI) was tested in a linear regression framework, as a function of haplotype dosage from posterior distribution, and including principal components as covariates to account for population structure using the most frequent haplotype as baseline.

**In-silico mutation analysis.** SIFT [39], PolyPhen-2 [40], and Condel [41] algorithms were used to predict the functional effects of the associated non-synonymous variants on protein function. Genomic Evolutionary Rate Profiling (GERP) [42] scores were calculated to indicate the degree of evolutionary conservation at a given human nucleotide based on multiple genomic sequence alignments and were measured as site-specific 'rejected substitutions': higher scores indicate greater conservation.

## Functional studies

**Site directed mutagenesis.** Human *G6PC2* cDNA (NM\_021176.2) within a pCMV6-Entry vector (with a C-terminal FLAG-tag) was purchased from OriGene (RC211146). We generated non-synonymous variants in the *G6PC2* coding sequence of the clone using Quikchange II

Site-Directed Mutagenesis (Agilent). All mutations were verified by Sanger sequencing; in each case, only the desired nucleotide substitutions was introduced.

**Western blot analyses.** HEK293 and INS-1E 832–13 cells were transfected with each FLAG-tagged wild type or mutant *G6PC2* construct using Lipofectamine 2000 (Invitrogen). In protein degradation assays, cells were treated with 10 $\mu$ M MG-132 (Calchembio) or 100 $\mu$ M chloroquine (Sigma) for 15h. At 48h after transfection, cells were collected and homogenized by sonication in lysis buffer. Total cellular protein was separated by 4–12% SDS-PAGE (Invitrogen) and transferred to nitrocellulose membranes. We determined *G6PC2* expression by immunoblotting using a mouse monoclonal FLAG M2 antibody (Sigma, F1804). A rabbit polyclonal antibody against  $\beta$  tubulin (Santa Cruz, sc-9104) was used as a loading control. Secondary antibodies specific to mouse or rabbit IgG were obtained from Thermo Fisher Scientific. Protein bands were detected using the ECL reagent (Pierce Thermo Fisher Scientific). Western blots were quantified by densitometry analysis using ImageJ and paired t tests of densitometric data were carried out in GraphPad Prism.

**Immunofluorescence.** HEK293 cells were transfected with each FLAG-tagged *G6PC2* construct using FuGene 6 transfection reagent (Promega) in 4-well chamber slides (BD Biosciences). After 48h, cells were fixed with 4% paraformaldehyde in PBS for 15 min. Cells were permeabilized with 0.05% Triton X-100 in PBS for 15 min, and blocked for 1 h with 10% BSA in PBS-Tween 20. We carried out double immunostaining of cells using FLAG M2 (Sigma, F1804) and calnexin (Santa Cruz, sc-11397) primary antibodies followed by anti-mouse fluorescein (Vector Labs) and anti-rabbit TRITC (Dako). DRAQ5 fluorescent probe (Thermo Fisher Scientific) was applied at 20 $\mu$ M as a far-red DNA stain. Slides were mounted with Vectashield mounting medium (Vector Labs) and visualized on a BioRad Radiance 2100 confocal microscope with a 60 $\times$  1.0 N.A. objective. Images were acquired with different laser settings that were optimized for each sample and therefore fluorescent intensities are not comparable across samples.

## URLs

Exome-array design,

[http://genome.sph.umich.edu/wiki/Exome\\_Chip\\_Design](http://genome.sph.umich.edu/wiki/Exome_Chip_Design)

EPACTS,

<http://genome.sph.umich.edu/wiki/EPACTS>

METAL,

<http://www.sph.umich.edu/csg/abecasis/Metal/download/>

RareMETALS,

<http://genome.sph.umich.edu/wiki/RareMETALS>

The 1000 Genomes Project,

[www.1000genomes.org](http://www.1000genomes.org)

## Supporting Information

**S1 Fig. Forest plots of association results with fasting glucose (FI) and fasting insulin (FG) levels.** Individual study and meta-analysis effects of A) *URB2* coding variant rs141203811 (p.Glu594Val) on FI; B) *GLP1R* coding variant rs10305492 (p.Ala316Thr) on FG; and C), D), & E) *G6PC2* coding variants rs138726309 (p.His177Tyr), rs2232323 (p.Tyr207Ser), rs492594 (p.Val219Leu) on FG.  
(PDF)



**S2 Fig. Regional association plots for FG at *G6PC2* region on chromosome 2.** (A) Unconditional association results highlight the previously known non-coding lead SNP rs560887. (B) Association results after conditioning on rs560887 highlight two non-synonymous coding variants rs138726309 (p.His177Tyr) and rs492594 (p.Val219Leu), both largely independent from the signal from rs560887. (C) Association results conditioning on rs560887 (GWAS SNP) and rs138726309 (p.His177Tyr) highlights rs492594 (p.Val219Leu) as an independently associated variant at *G6PC2*. (D) Association results conditioning on rs560887 (GWAS SNP) and rs492594 (p.Val219Leu) highlights rs138726309 (p.His177Tyr) as the second independently associated coding variant at *G6PC2*  
(PDF)

**S3 Fig. Quantile-quantile plots (qq-plot) for each study included in the meta-analysis for FG and FI.** Genomic control (GC) is given in each qq-plot.  
(PDF)

**S1 Table. Characteristics of the study cohorts.**  
(DOCX)

**S2 Table. Sample characteristics of the study cohorts.**  
(DOCX)

**S3 Table. Coding variants achieving exome-wide significant association with FG and FI levels in single-variant analysis.** MAF: minor allele frequency.  $\beta$ : regression coefficient estimates. SE: standard error. N: number of samples analyzed.  $I^2$ : heterogeneity measure in %.  $P_{het}$ : P-value for Cochran's Q statistic. <sup>a</sup>Sample-size weighted average minor allele frequency percentage across all studies.  
(DOCX)

**S4 Table. *In silico* predictions of the impact of the non-synonymous changes on protein function and the evolutionary conservation of variants.** GERP: Genomic Evolutionary Rate Profiling  
(DOCX)

**S5 Table. Conditional analysis of genes associated with FG and FI levels at exome-wide significance in gene-based tests using SKAT and BURDEN.** \* Although *AKT2* reached exome-wide significance, the signal was driven by a single variant which showed only suggestive significance in single-variant analysis ( $P=9.3 \times 10^{-7}$ ). As described in the methods, we required the single-variant test to be exome-wide significant ( $P < 5 \times 10^{-7}$ ) in such a scenario  
(DOCX)

**S6 Table. FG single-variant association results of the rare and low-frequency *G6PC2* coding variants included in the gene-based tests based on unrelated samples.** MAF: minor allele frequency; Allele counts: Minor allele counts. <sup>a</sup>Alleles are aligned to the forward strand of NCBI Build 37. <sup>b</sup>Sample-size weighted average minor allele frequency percentage across all studies. P values are obtained with derived inverse normalized residuals of mmol/L of fasting glucose after adjustment for age, sex, and BMI. Direction of effect is aligned to the minor allele.  
(DOCX)

**S7 Table. Association with T2D, birth weight and diabetes-related quantitative traits.** m: Minor allele; M: Major allele; BMI: Body mass index; WHR: Waist-hip ratio; FG: Fasting glucose level; FI: Fasting insulin level, adjusted for BMI; HbA1c: Hemoglobin A1-C level; HOMA-B: Homeostasis model assessment-B score; HOMA-IR: Homeostasis model assessment-insulin resistance; SBP: Systolic blood pressure; DBP: Diastolic blood pressure; TG:

Triglycerides; HDL-C: HDL cholesterol; LDL-C: LDL cholesterol; TC: Total cholesterol; BW: Birth weight. (a) Trait increasing allele in bold. (b) Samples contributing to T2D case-control analysis include a subset of the non-diabetic samples contributing to the current analysis.

(c) All published data is “unconditioned”. As seen in our analysis, direction of effect switches after conditioning on rs560887 at least for FG. For exome-chip FG and T2D we have provided results from conditional analysis and G is the trait increasing allele.

\* rs2232323 (*G6PC2*), rs138726309 (*G6PC2*), rs35742417 (*RREB1*), and rs141203811 (*URB2*) have not been investigated in earlier GWAS

(DOCX)

**S8 Table. Genotype concordance of all the variants discussed in the manuscript. Concordance is computed for the variants with non-missing calls in both exome-array and exome sequence data.** N: Number of samples.

(DOCX)

**S9 Table. Study-wise call rate and Hardy-Weinberg equilibrium P-values of all the variants discussed in the manuscript.** CR: call rate. HWE: Hardy-Weinberg equilibrium p-value.

(DOCX)

## Acknowledgments

We gratefully acknowledge the contribution of all participants from the various studies that contributed to this work.

### Members of T2D-GENES consortium and GoT2D consortium

Hanna E Abboud<sup>1</sup>, Uzma Afzal<sup>2</sup>, David Aguilar<sup>3</sup>, Rector Arya<sup>1</sup>, Gil Atzmon<sup>4</sup>, Tin Aung<sup>5, 6</sup>, Eric Banks<sup>7</sup>, Inês Barroso<sup>8, 9</sup>, Nir Barzilai<sup>4</sup>, Jennifer E Below<sup>10</sup>, Dwaipayan Bharadwaj<sup>11</sup>, Thomas W Blackwell<sup>12</sup>, Lori L Bonnycastle<sup>13</sup>, Don Bowden<sup>14–16</sup>, Jason Carey<sup>7</sup>, Mauricio O Carneiro<sup>7</sup>, John C Chambers<sup>2, 17, 18</sup>, Edmund Chan<sup>19</sup>, Juliana Chan<sup>20–22</sup>, Giriraj R Chandak<sup>23</sup>, Peng Chen<sup>24</sup>, Yuhui Chen<sup>25</sup>, Han Chen<sup>26, 27</sup>, Ching-Yu Cheng<sup>5, 6, 24, 28</sup>, Kee Seng Chia<sup>24</sup>, Yoon Shin Cho<sup>29</sup>, Adolfo Correa<sup>30</sup>, Joanne E Curran<sup>31</sup>, Mark J Daly<sup>32</sup>, Aaron G Day-Williams<sup>8</sup>, Ralph A DeFronzo<sup>1</sup>, Mark DePristo<sup>7</sup>, Peter J Donnelly<sup>25, 33</sup>, Shah B Ebrahim<sup>34</sup>, Paul Elliott<sup>2, 35</sup>, Tõnu Esko<sup>7, 36–38</sup>, João Fadista<sup>39</sup>, Yossi Farjoun<sup>7</sup>, Andrew J Farmer<sup>40</sup>, Vidya S Farook<sup>31</sup>, Timothy Fennell<sup>7</sup>, Teresa Ferreira<sup>25</sup>, Tasha Fingerlin<sup>41</sup>, Tom Forsén<sup>42, 43</sup>, Sharon P Fowler<sup>1</sup>, Paul W Franks<sup>44–46</sup>, Timothy M Frayling<sup>47</sup>, Barry I Freedman<sup>48</sup>, Philippe Froguel<sup>49</sup>, Eric R Gamazon<sup>50</sup>, Christian Gieger<sup>51</sup>, Benjamin Glaser<sup>52</sup>, Min Jin Go<sup>53</sup>, Jacqueline I Goldstein<sup>7, 32</sup>, Harald Grallert<sup>54–56</sup>, George Grant<sup>7</sup>, Todd Green<sup>7</sup>, Michael Griswold<sup>57</sup>, Daniel Esten Hale<sup>58</sup>, Bok-Ghee Han<sup>53</sup>, Christopher Hartl<sup>7</sup>, Andrew T Hattersley<sup>59</sup>, Pamela J Hicks<sup>14–16</sup>, Dylan Hodgkiss<sup>60</sup>, Momoko Horikoshi<sup>25, 61</sup>, Martin Hrabé de Angelis<sup>62</sup>, Cheng Hu<sup>63</sup>, Frank B Hu<sup>44, 64</sup>, Iksoo Huh<sup>65</sup>, Mohammad Kamran Ikram<sup>5, 6</sup>, Thomas Illig<sup>55, 66</sup>, Kathleen A Jablonski<sup>67</sup>, Christopher P Jenkinson<sup>1, 68</sup>, Weiping Jia<sup>63</sup>, Hyun Min Kang<sup>12</sup>, Chiea-Chuen Khor<sup>5, 6, 24, 69, 70</sup>, Yongkang Kim<sup>65</sup>, Young Jin Kim<sup>53</sup>, Bong-Jo Kim<sup>53</sup>, Leena Kinnunen<sup>71</sup>, Jaspal Singh Kooner<sup>72</sup>, Jasmina Kravic<sup>39</sup>, Jennifer Kriebel<sup>55, 56</sup>, Ashish Kumar<sup>25, 73</sup>, Satish Kumar<sup>31</sup>, Teemu Kuulasmaa<sup>74</sup>, Min-Seok Kwon<sup>75</sup>, Claudia Langenberg<sup>76</sup>, Torsten Lauritzen<sup>77</sup>, Selyeong Lee<sup>65</sup>, Jaehoon Lee<sup>65</sup>, Juyoung Lee<sup>53</sup>, Jong-Young Lee<sup>78</sup>, Donna M Lehman<sup>1</sup>, Benjamin Lehne<sup>2</sup>, Jonathan C Levy<sup>61</sup>, Jiang Li<sup>14</sup>, Liming Liang<sup>27, 64</sup>, Wei Yen Lim<sup>24</sup>, Keng-Han Lin<sup>12</sup>, Jianjun Liu<sup>24, 70</sup>, Marie Loh<sup>2, 79</sup>, Ronald C W Ma<sup>20–22</sup>, Clement Ma<sup>12</sup>, Reedik Mägi<sup>37</sup>, Jared Maguire<sup>7</sup>, Taylor J Maxwell<sup>10</sup>, Gilean McVean<sup>25</sup>, Christa Meisinger<sup>54</sup>, Thomas Meitinger<sup>80–82</sup>, Olle Melander<sup>83</sup>, Andres Metspalu<sup>37</sup>, Evelin Mihailov<sup>37</sup>, Lili Milani<sup>37</sup>, Loukas Moutsianas<sup>25</sup>, Martina Müller-Nurasyid<sup>51, 80, 84, 85</sup>, Solomon K Musani<sup>86</sup>, Yoshihiko Nagai<sup>87–89</sup>, Narisu Narisu<sup>13</sup>, Benjamin M Neale<sup>7, 32</sup>,

Maggie C Y Ng<sup>14, 15</sup>, Peter Nilsson<sup>90</sup>, Stephen P O’Rahilly<sup>9</sup>, Marju Orho-Melander<sup>91</sup>, Katharine R Owen<sup>61, 92</sup>, Nicholette D Palmer<sup>14–16</sup>, Taesung Park<sup>65, 75</sup>, Dorota Pasko<sup>47</sup>, Richard D Pearson<sup>25</sup>, John R B Perry<sup>25, 47, 76</sup>, Annette Peters<sup>54, 56, 80</sup>, Toni I Pollin<sup>93</sup>, Ryan Poplin<sup>7</sup>, Dorairaj Prabhakaran<sup>34</sup>, Sobha Puppala<sup>31</sup>, Shaun Purcell<sup>7, 94, 95</sup>, Lu Qi<sup>44, 96</sup>, Qibin Qi<sup>44, 97</sup>, Michael Roden<sup>98</sup>, Olov Rolandsson<sup>45</sup>, Anders H Rosengren<sup>39</sup>, Manjinder Sandhu<sup>8, 99</sup>, Thomas Schwarzmayr<sup>82</sup>, Laura J Scott<sup>12</sup>, Robert A Scott<sup>76</sup>, James Scott<sup>72</sup>, William R Scott<sup>2</sup>, Jobanpreet Sehmi<sup>17, 72</sup>, Khalid Shakir<sup>7</sup>, Rob Sladek<sup>87, 88, 100</sup>, Joshua D Smith<sup>101</sup>, Alena Stančáková<sup>74</sup>, Konstantin Strauch<sup>51, 85</sup>, Tim M Strom<sup>81, 82</sup>, Amy Swift<sup>13</sup>, E Shyong Tai<sup>19, 24, 102</sup>, Juan Fernandez Tajés<sup>25</sup>, Sian-Tsung Tan<sup>17, 72</sup>, Nikhil Tandon<sup>103</sup>, Herman A Taylor Jr<sup>30</sup>, Yik Ying Teo<sup>24, 104, 105</sup>, Farook Thameem<sup>1</sup>, Barbara Thorand<sup>54, 56</sup>, Martijn van de Bunt<sup>25, 61</sup>, Tibor V Varga<sup>46</sup>, Mark Walker<sup>106</sup>, Nicholas J Wareham<sup>76</sup>, Ryan P Welch<sup>12</sup>, Thomas Wieland<sup>82</sup>, Gregory Wilson Sr<sup>107</sup>, Tien Yin Wong<sup>5, 6</sup>, Andrew R Wood<sup>47</sup>, Joon Yoon<sup>75</sup>, Eleftheria Zeggini<sup>8</sup>, Weihua Zhang<sup>2, 17</sup>

1. Department of Medicine, University of Texas Health Science Center, San Antonio, Texas, USA.
2. Department of Epidemiology and Biostatistics, Imperial College London, London, UK.
3. Cardiovascular Division, Baylor College of Medicine, Houston, Texas, USA.
4. Departments of Medicine and Genetics, Albert Einstein College of Medicine, New York, USA.
5. Department of Ophthalmology, Yong Loo Lin School of Medicine, National University of Singapore, National University Health System, Singapore.
6. Singapore Eye Research Institute, Singapore National Eye Centre, Singapore.
7. Program in Medical and Population Genetics, Broad Institute, Cambridge, Massachusetts, USA.
8. Department of Human Genetics, Wellcome Trust Sanger Institute, Hinxton, Cambridge-shire, UK.
9. Metabolic Research Laboratories, Institute of Metabolic Science, University of Cambridge, Cambridge, UK.
10. Human Genetics Center, School of Public Health, The University of Texas Health Science Center at Houston, Houston, Texas, USA.
11. Functional Genomics Unit, CSIR-Institute of Genomics & Integrative Biology (CSIR-IGIB), New Delhi, India.
12. Department of Biostatistics and Center for Statistical Genetics, University of Michigan, Ann Arbor, Michigan, USA.
13. Medical Genomics and Metabolic Genetics Branch, National Human Genome Research Institute, National Institutes of Health, Bethesda, Maryland, USA.
14. Center for Genomics and Personalized Medicine Research, Wake Forest School of Medicine, Winston-Salem, North Carolina, USA.
15. Center for Diabetes Research, Wake Forest School of Medicine, Winston-Salem, North Carolina, USA.
16. Department of Biochemistry, Wake Forest School of Medicine, Winston-Salem, North Carolina, USA.

17. Department of Cardiology, Ealing Hospital NHS Trust, Southall, Middlesex, UK.
18. Imperial College Healthcare NHS Trust, Imperial College London, London, UK.
19. Department of Medicine, Yong Loo Lin School of Medicine, National University of Singapore, National University Health System, Singapore.
20. Hong Kong Institute of Diabetes and Obesity, The Chinese University of Hong Kong, Hong Kong, China.
21. Department of Medicine and Therapeutics, The Chinese University of Hong Kong, Hong Kong, China.
22. Li Ka Shing Institute of Health Sciences, The Chinese University of Hong Kong, Hong Kong, China.
23. CSIR-Centre for Cellular and Molecular Biology, Hyderabad, Andhra Pradesh, India.
24. Saw Swee Hock School of Public Health, National University of Singapore, National University Health System, Singapore.
25. Wellcome Trust Centre for Human Genetics, Nuffield Department of Medicine, University of Oxford, Oxford, UK.
26. Department of Biostatistics, Boston University School of Public Health, Boston, Massachusetts, USA.
27. Department of Biostatistics, Harvard School of Public Health, Boston, Massachusetts, USA.
28. Centre for Quantitative Medicine, Office of Clinical Sciences, Duke-NUS Graduate Medical School Singapore, Singapore.
29. Department of Biomedical Science, Hallym University, Chuncheon, Republic of Korea.
30. Department of Medicine, University of Mississippi Medical Center, Jackson, Mississippi, USA.
31. Department of Genetics, Texas Biomedical Research Institute, San Antonio, Texas, USA.
32. Analytic and Translational Genetics Unit, Department of Medicine, Massachusetts General Hospital, Boston, Massachusetts, USA.
33. Department of Statistics, University of Oxford, Oxford, UK.
34. Centre for Chronic Disease Control, New Delhi, India.
35. MRC-PHE Centre for Environment and Health, Imperial College London, London, UK.
36. Department of Genetics, Harvard Medical School, Boston, Massachusetts, USA.
37. Estonian Genome Centre, University of Tartu, Tartu, Estonia.
38. Division of Endocrinology, Boston Children's Hospital, Boston, Massachusetts, USA.
39. Department of Clinical Sciences, Diabetes and Endocrinology, Lund University Diabetes Centre, Malmö, Sweden.
40. Department of Primary Care Health Sciences, University of Oxford, Oxford, UK.
41. Department of Epidemiology, Colorado School of Public Health, University of Colorado, Aurora, Colorado, USA.

42. Department of General Practice and Primary Health Care, University of Helsinki, Helsinki, Finland.
43. Vasa Health Care Center, Vaasa, Finland.
44. Department of Nutrition, Harvard School of Public Health, Boston, Massachusetts, USA.
45. Department of Public Health and Clinical Medicine, Umeå University, Umeå, Sweden.
46. Department of Clinical Sciences, Lund University Diabetes Centre, Genetic and Molecular Epidemiology Unit, Lund University, Malmö, Sweden.
47. Genetics of Complex Traits, University of Exeter Medical School, University of Exeter, Exeter, UK.
48. Department of Internal Medicine, Section on Nephrology, Wake Forest School of Medicine, Winston-Salem, North Carolina, USA.
49. Genomics and Molecular Physiology, CNRS (Institut de Biologie de Lille), Lille, France.
50. Department of Medicine, Section of Genetic Medicine, The University of Chicago, Chicago, Illinois, USA.
51. Institute of Genetic Epidemiology, Helmholtz Zentrum München, German Research Center for Environmental Health, Neuherberg, Germany.
52. Endocrinology and Metabolism Service, Hadassah-Hebrew University Medical Center, Jerusalem, Israel.
53. Center for Genome Science, Korea National Institute of Health, Chungcheongbuk-do, Republic of Korea.
54. Institute of Epidemiology II, Helmholtz Zentrum München, German Research Center for Environmental Health, Neuherberg, Germany.
55. Research Unit of Molecular Epidemiology, Helmholtz Zentrum München, German Research Center for Environmental Health, Neuherberg, Germany.
56. German Center for Diabetes Research (DZD), Neuherberg, Germany.
57. Center of Biostatistics and Bioinformatics, University of Mississippi Medical Center, Jackson, Mississippi, USA.
58. Department of Pediatrics, University of Texas Health Science Center, San Antonio, Texas, USA.
59. University of Exeter Medical School, University of Exeter, Exeter, UK.
60. Department of Twin Research and Genetic Epidemiology, King's College London, London, UK.
61. Oxford Centre for Diabetes, Endocrinology and Metabolism, Radcliffe Department of Medicine, University of Oxford, Oxford, UK.
62. Institute of Experimental Genetics, Helmholtz Zentrum München, German Research Center for Environmental Health, Neuherberg, Germany.
63. Department of Endocrinology and Metabolism, Shanghai Diabetes Institute, Shanghai Jiao Tong University Affiliated Sixth People's Hospital, Shanghai, China.

64. Department of Epidemiology, Harvard School of Public Health, Boston, Massachusetts, USA.
65. Department of Statistics, Seoul National University, Seoul, Republic of Korea.
66. Hannover Unified Biobank, Hannover Medical School, Hannover, Germany.
67. The Biostatistics Center, The George Washington University, Rockville, Maryland, USA.
68. Research, South Texas Veterans Health Care System, San Antonio, Texas, USA.
69. Department of Paediatrics, Yong Loo Lin School of Medicine, National University of Singapore, National University Health System, Singapore.
70. Division of Human Genetics, Genome Institute of Singapore, A\*STAR, Singapore.
71. Diabetes Prevention Unit, National Institute for Health and Welfare, Helsinki, Finland.
72. National Heart and Lung Institute, Cardiovascular Sciences, Hammersmith Campus, Imperial College London, London, UK.
73. Chronic Disease Epidemiology, Swiss Tropical and Public Health Institute, University of Basel, Basel, Switzerland.
74. Faculty of Health Sciences, Institute of Clinical Medicine, Internal Medicine, University of Eastern Finland, Kuopio, Finland.
75. Interdisciplinary Program in Bioinformatics, Seoul National University, Seoul, Republic of Korea.
76. MRC Epidemiology Unit, Institute of Metabolic Science, University of Cambridge, Cambridge, UK.
77. Department of Public Health, Section of General Practice, Aarhus University, Aarhus, Denmark.
78. Ministry of Health and Welfare, Seoul, Republic of Korea.
79. Institute of Health Sciences, University of Oulu, Oulu, Finland.
80. Deutsches Forschungszentrum für Herz-Kreislaufkrankungen (DZHK), Partner Site Munich Heart Alliance, Munich, Germany.
81. Institute of Human Genetics, Technische Universität München, Munich, Germany.
82. Institute of Human Genetics, Helmholtz Zentrum München, German Research Center for Environmental Health, Neuherberg, Germany.
83. Department of Clinical Sciences, Hypertension and Cardiovascular Disease, Lund University, Malmö, Sweden.
84. Department of Medicine I, University Hospital Grosshadern, Ludwig-Maximilians-Universität, Munich, Germany.
85. Institute of Medical Informatics, Biometry and Epidemiology, Chair of Genetic Epidemiology, Ludwig-Maximilians-Universität, Neuherberg, Germany.
86. Jackson Heart Study, University of Mississippi Medical Center, Jackson, Mississippi, USA.
87. McGill University and Génome Québec Innovation Centre, Montreal, Quebec, Canada.

88. Department of Human Genetics, McGill University, Montreal, Quebec, Canada.
89. Research Institute of the McGill University Health Centre, Montreal, Quebec, Canada.
90. Department of Clinical Sciences, Medicine, Lund University, Malmö, Sweden.
91. Department of Clinical Sciences, Diabetes and Cardiovascular Disease, Genetic Epidemiology, Lund University, Malmö, Sweden.
92. Oxford NIHR Biomedical Research Centre, Oxford University Hospitals Trust, Oxford, UK.
93. Department of Medicine, Program in Personalized and Genomic Medicine, University of Maryland, Baltimore, Maryland, USA.
94. Center for Human Genetic Research, Department of Medicine, Massachusetts General Hospital, Boston, Massachusetts, USA.
95. Department of Psychiatry, Icahn Institute for Genomics and Multiscale Biology, Icahn School of Medicine at Mount Sinai, New York, USA.
96. Channing Division of Network Medicine, Department of Medicine, Brigham and Women's Hospital and Harvard Medical School, Boston, Massachusetts, USA.
97. Department of Epidemiology and Population Health, Albert Einstein College of Medicine, New York, USA.
98. Institute of Clinical Diabetology, German Diabetes Center, Leibniz Center for Diabetes Research at Heinrich Heine University, Düsseldorf, Germany.
99. Department of Public Health and Primary Care, Institute of Public Health, University of Cambridge, Cambridge, UK.
100. Division of Endocrinology and Metabolism, Department of Medicine, McGill University, Montreal, Quebec, Canada.
101. Department of Genome Sciences, University of Washington School of Medicine, Seattle, Washington, USA.
102. Cardiovascular & Metabolic Disorders Program, Duke-NUS Graduate Medical School Singapore, Singapore.
103. Department of Endocrinology and Metabolism, All India Institute of Medical Sciences, New Delhi, India.
104. Department of Statistics and Applied Probability, National University of Singapore, Singapore.
105. Life Sciences Institute, National University of Singapore, Singapore.
106. The Medical School, Institute of Cellular Medicine, University of Newcastle, Newcastle, UK.
107. College of Public Services, Jackson State University, Jackson, Mississippi, USA.

### Author Contributions

Conceived and designed the experiments: AMah XS HJN AMan MAR HMH AEL NG HKI GA GIB JB NJC RD CLH MS JGW RMW IP JD JCF APM DA JBM MB MIM CML ALG. Performed the experiments: AMah XS HJN AMan NG NWR NRR NLB JKR PC JF PF CF KJG

TMT JBJ CL CB DB GB NPB SG APG CJG MH JRH AUJ GJ JMJ MM JM MN RO KSS HMS ACS JTr CC IB RR GLS ASFD LLa AL BI TT MEJ TJ JK MU VS TDS ADM CNAP FSC KLM RNB EI LLi JTu TH FK LG ML OP APM DA MB MIM CML ALG. Analyzed the data: AMah XS HJN AMan MAR HMH AEL NG HKI APM JBM MB MIM CML ALG. Wrote the paper: AMah XS HJN AEL APM JBM MB MIM CML ALG. Steering committee overseeing the consortia: GA GIB JB NJC RD CLH KLM MS JGW JCF DA MB MIM.

## References

1. Prokopenko I, Langenberg C, Florez JC, Saxena R, Soranzo N, et al. (2009) Variants in *MTNR1B* influence fasting glucose levels. *Nat Genet* 41: 77–81. doi: [10.1038/ng.290](https://doi.org/10.1038/ng.290) PMID: [19060907](https://pubmed.ncbi.nlm.nih.gov/19060907/)
2. Dupuis J, Langenberg C, Prokopenko I, Saxena R, Soranzo N, et al. (2010) New genetic loci implicated in fasting glucose homeostasis and their impact on type 2 diabetes risk. *Nat Genet* 42: 105–116. doi: [10.1038/ng.520](https://doi.org/10.1038/ng.520) PMID: [20081858](https://pubmed.ncbi.nlm.nih.gov/20081858/)
3. Manning AK, Hivert M-F, Scott RA, Grimsby JL, Bouatia-Naji N, et al. (2012) A genome-wide approach accounting for body mass index identifies genetic variants influencing fasting glycemic traits and insulin resistance. *Nat Genet* 44: 659–669. doi: [10.1038/ng.2274](https://doi.org/10.1038/ng.2274) PMID: [22581228](https://pubmed.ncbi.nlm.nih.gov/22581228/)
4. Scott RA, Lagou V, Welch RP, Wheeler E, Montasser ME, et al. (2012) Large-scale association analyses identify new loci influencing glycemic traits and provide insight into the underlying biological pathways. *Nat Genet* 44: 991–991005. doi: [10.1038/ng.2385](https://doi.org/10.1038/ng.2385) PMID: [22885924](https://pubmed.ncbi.nlm.nih.gov/22885924/)
5. Kang HM, Sul JH, Service SK, Zaitlen NA, Kong S-Y, et al. (2010) Variance component model to account for sample structure in genome-wide association studies. *Nat Genet* 42: 348–354. doi: [10.1038/ng.548](https://doi.org/10.1038/ng.548) PMID: [20208533](https://pubmed.ncbi.nlm.nih.gov/20208533/)
6. Liu DJ, Peloso GM, Zhan X, Holmen OL, Zawistowski M, et al. (2014) Meta-analysis of gene-level tests for rare variant association. *Nat Genet* 46: 200–204. doi: [10.1038/ng.2852](https://doi.org/10.1038/ng.2852) PMID: [24336170](https://pubmed.ncbi.nlm.nih.gov/24336170/)
7. Feng S, Liu D, Zhan X, Wing MK, Abecasis GR (2014) RAREMETAL: fast and powerful meta-analysis for rare variants. *Bioinformatics*. doi: [10.1093/bioinformatics/btu367](https://doi.org/10.1093/bioinformatics/btu367) PMID: [24894501](https://pubmed.ncbi.nlm.nih.gov/24894501/)
8. Wu MC, Lee S, Cai T, Li Y, Boehnke M, et al. (2011) Rare-variant association testing for sequencing data with the sequence kernel association test. *Am J Hum Genet* 89: 82–93. doi: [10.1016/j.ajhg.2011.05.029](https://doi.org/10.1016/j.ajhg.2011.05.029) PMID: [21737059](https://pubmed.ncbi.nlm.nih.gov/21737059/)
9. Magi R, Kumar A, Morris AP (2011) Assessing the impact of missing genotype data in rare variant association analysis. *BMC Proc* 5 Suppl 9. doi: [10.1186/1753-6561-5-S9-S107](https://doi.org/10.1186/1753-6561-5-S9-S107) PMID: [22373025](https://pubmed.ncbi.nlm.nih.gov/22373025/)
10. Purcell SM, Moran JL, Fromer M, Ruderfer D, Solovieff N, et al. (2014) A polygenic burden of rare disruptive mutations in schizophrenia. *Nature* 506: 185–190. doi: [10.1038/nature12975](https://doi.org/10.1038/nature12975) PMID: [24463508](https://pubmed.ncbi.nlm.nih.gov/24463508/)
11. Vaxillaire M, Cavalcanti-Proenca C, Dechaume A, Tichet J, Marre M, et al. (2008) The common P446L polymorphism in *GCKR* inversely modulates fasting glucose and triglyceride levels and reduces type 2 diabetes risk in the DESIR prospective general French population. *Diabetes* 57: 2253–2257. doi: [10.2337/db07-1807](https://doi.org/10.2337/db07-1807) PMID: [18556336](https://pubmed.ncbi.nlm.nih.gov/18556336/)
12. Beer NL, Tribble ND, McCulloch LJ, Roos C, Johnson PRV, et al. (2009) The P446L variant in *GCKR* associated with fasting plasma glucose and triglyceride levels exerts its effect through increased glucokinase activity in liver. *Hum Mol Genet* 18: 4081–4088. doi: [10.1093/hmg/ddp357](https://doi.org/10.1093/hmg/ddp357) PMID: [19643913](https://pubmed.ncbi.nlm.nih.gov/19643913/)
13. Rees MG, Wincovitch S, Schultz J, Waterstradt R, Beer NL, et al. (2012) Cellular characterisation of the *GCKR* P446L variant associated with type 2 diabetes risk. *Diabetologia* 55: 114–122. doi: [10.1007/s00125-011-2348-5](https://doi.org/10.1007/s00125-011-2348-5) PMID: [22038520](https://pubmed.ncbi.nlm.nih.gov/22038520/)
14. Drucker DJ, Nauck MA (2006) The incretin system: glucagon-like peptide-1 receptor agonists and dipeptidyl peptidase-4 inhibitors in type 2 diabetes. *Lancet* 368: 1696–1705. doi: [10.1016/S0140-6736\(06\)69705-5](https://doi.org/10.1016/S0140-6736(06)69705-5) PMID: [17098089](https://pubmed.ncbi.nlm.nih.gov/17098089/)
15. Service SK, Teslovich TM, Fuchsberger C, Ramensky V, Yajnik P, et al. (2014) Re-sequencing expands our understanding of the phenotypic impact of variants at GWAS loci. *PLoS genetics* 10: e1004147. doi: [10.1371/journal.pgen.1004147](https://doi.org/10.1371/journal.pgen.1004147) PMID: [24497850](https://pubmed.ncbi.nlm.nih.gov/24497850/)
16. Khajavi M, Inoue K, Lupski JR. (2006) Nonsense-mediated mRNA decay modulates clinical outcome of genetic disease. *Eur J Hum Genet* 14: 1074–81. doi: [10.1038/sj.ejhg.5201649](https://doi.org/10.1038/sj.ejhg.5201649) PMID: [16757948](https://pubmed.ncbi.nlm.nih.gov/16757948/)
17. Chen W-M, Erdos MR, Jackson AU, Saxena R, Sanna S, et al. (2008) Variations in the *G6PC2/ABCB11* genomic region are associated with fasting glucose levels. *J Clin Invest* 118: 2620–2628. doi: [10.1172/JCI34566](https://doi.org/10.1172/JCI34566) PMID: [18521185](https://pubmed.ncbi.nlm.nih.gov/18521185/)
18. Bouatia-Naji N, Rocheleau G, Van Lommel L, Lemaire K, Schuit F, et al. (2008) A polymorphism within the *G6PC2* gene is associated with fasting plasma glucose levels. *Science* 320: 1085–1088. doi: [10.1126/science.1156849](https://doi.org/10.1126/science.1156849) PMID: [18451265](https://pubmed.ncbi.nlm.nih.gov/18451265/)



19. Baerenwald DA, Bonnefond A, Bouatia-Naji N, Flemming BP, Umunakwe OC, et al. (2013) Multiple functional polymorphisms in the G6PC2 gene contribute to the association with higher fasting plasma glucose levels. *Diabetologia* 56: 1306–1316. doi: [10.1007/s00125-013-2875-3](https://doi.org/10.1007/s00125-013-2875-3) PMID: [23508304](https://pubmed.ncbi.nlm.nih.gov/23508304/)
20. Pound LD, Oeser JK, O'Brien TP, Wang Y, Faulman CJ, et al. (2013) G6PC2: a negative regulator of basal glucose-stimulated insulin secretion. *Diabetes* 62: 1547–1556. doi: [10.2337/db12-1067](https://doi.org/10.2337/db12-1067) PMID: [23274894](https://pubmed.ncbi.nlm.nih.gov/23274894/)
21. Morris AP, Voight BF, Teslovich TM, Ferreira T, Segre AV, et al. (2012) Large-scale association analysis provides insights into the genetic architecture and pathophysiology of type 2 diabetes. *Nat Genet* 44: 981–990. doi: [10.1038/ng.2383](https://doi.org/10.1038/ng.2383) PMID: [22885922](https://pubmed.ncbi.nlm.nih.gov/22885922/)
22. Wang H, Liu L, Zhao J, Cui G, Chen C, et al. (2013) Large scale meta-analyses of fasting plasma glucose raising variants in GCK, GCKR, MTNR1B and G6PC2 and their impacts on type 2 diabetes mellitus risk. *PLoS One* 8: e67665. doi: [10.1371/journal.pone.0067665](https://doi.org/10.1371/journal.pone.0067665) PMID: [23840762](https://pubmed.ncbi.nlm.nih.gov/23840762/)
23. Hu C, Zhang R, Wang C, Ma X, Fang Q, et al. (2009) A genetic variant of G6PC2 is associated with type 2 diabetes and fasting plasma glucose level in the Chinese population. *Diabetologia* 52: 451–456. doi: [10.1007/s00125-008-1241-3](https://doi.org/10.1007/s00125-008-1241-3) PMID: [19082990](https://pubmed.ncbi.nlm.nih.gov/19082990/)
24. Pickett LA, Yourshaw M, Alborno V, Chen Z, Solorzano-Vargas RS, et al. (2013) Functional consequences of a novel variant of PCSK1. *PLoS One* 8: e55065. doi: [10.1371/journal.pone.0055065](https://doi.org/10.1371/journal.pone.0055065) PMID: [23383060](https://pubmed.ncbi.nlm.nih.gov/23383060/)
25. Liu G, Clement LC, Kanwar YS, Avila-Casado C, Chugh SS (2006) ZHX proteins regulate podocyte gene expression during the development of nephrotic syndrome. *J Biol Chem* 281: 39681–39692. doi: [10.1074/jbc.M606664200](https://doi.org/10.1074/jbc.M606664200) PMID: [17056598](https://pubmed.ncbi.nlm.nih.gov/17056598/)
26. Gargalovic PS, Erbilgin A, Kohannim O, Pagnon J, Wang X, et al. (2010) Quantitative trait locus mapping and identification of Zfx2 as a novel regulator of plasma lipid metabolism. *Circ Cardiovasc Genet* 3: 60–67. doi: [10.1161/CIRCGENETICS.109.902320](https://doi.org/10.1161/CIRCGENETICS.109.902320) PMID: [20160197](https://pubmed.ncbi.nlm.nih.gov/20160197/)
27. Mahajan A (2014) Genome-wide trans-ancestry meta-analysis provides insight into the genetic architecture of type 2 diabetes susceptibility. *Nat Genet* 46: 234–244. doi: [10.1038/ng.2897](https://doi.org/10.1038/ng.2897) PMID: [24509480](https://pubmed.ncbi.nlm.nih.gov/24509480/)
28. Vlcek S, Foisner R, Wilson KL (2004) Lco1 is a novel widely expressed lamin-binding protein in the nuclear interior. *Exp Cell Res* 298: 499–511. doi: [10.1016/j.yexcr.2004.04.028](https://doi.org/10.1016/j.yexcr.2004.04.028) PMID: [15265697](https://pubmed.ncbi.nlm.nih.gov/15265697/)
29. Hegele RA, Anderson CM, Wang J, Jones DC, Cao H (2000) Association between nuclear lamin A/C R482Q mutation and partial lipodystrophy with hyperinsulinemia, dyslipidemia, hypertension, and diabetes. *Genome Res* 10: 652–658. doi: [10.1101/gr.10.5.652](https://doi.org/10.1101/gr.10.5.652) PMID: [10810087](https://pubmed.ncbi.nlm.nih.gov/10810087/)
30. Mesa JL, Loos RJF, Franks PW, Ong KK, Luan Ja, et al. (2007) Lamin A/C polymorphisms, type 2 diabetes, and the metabolic syndrome: case-control and quantitative trait studies. *Diabetes* 56: 884–889. doi: [10.2337/db06-1055](https://doi.org/10.2337/db06-1055) PMID: [17327461](https://pubmed.ncbi.nlm.nih.gov/17327461/)
31. Lappalainen T, Montgomery SB, Nica AC, Dermitzakis ET (2011) Epistatic selection between coding and regulatory variation in human evolution and disease. *Am J Hum Genet* 89: 459–463. doi: [10.1016/j.ajhg.2011.08.004](https://doi.org/10.1016/j.ajhg.2011.08.004) PMID: [21907014](https://pubmed.ncbi.nlm.nih.gov/21907014/)
32. Rees MG, Ng D, Ruppert S, Turner C, Beer NL, et al. (2012) Correlation of rare coding variants in the gene encoding human glucokinase regulatory protein with phenotypic, cellular, and kinetic outcomes. *J Clin Invest* 122: 205–217. doi: [10.1172/JCI46425](https://doi.org/10.1172/JCI46425) PMID: [22182842](https://pubmed.ncbi.nlm.nih.gov/22182842/)
33. Bonnefond A, Clement N, Fawcett K, Yengo L, Vaillant E, et al. (2012) Rare MTNR1B variants impairing melatonin receptor 1B function contribute to type 2 diabetes. *Nat Genet* 44: 297–301. doi: [10.1038/ng.1053](https://doi.org/10.1038/ng.1053) PMID: [22286214](https://pubmed.ncbi.nlm.nih.gov/22286214/)
34. Zuk O, Schaffner SF, Samocha K, Do R, Hechter E, et al. (2014) Searching for missing heritability: designing rare variant association studies. *Proc Natl Acad Sci U S A* 111: 455–464. doi: [10.1073/pnas.1322563111](https://doi.org/10.1073/pnas.1322563111) PMID: [24443550](https://pubmed.ncbi.nlm.nih.gov/24443550/)
35. D'Orazio P, Burnett RW, Fogh-Andersen N, Jacobs E, Kuwa K, et al. (2005) Approved IFCC recommendation on reporting results for blood glucose (abbreviated). *Clin Chem* 51: 1573–1576. doi: [10.1373/clinchem.2005.051979](https://doi.org/10.1373/clinchem.2005.051979) PMID: [16120945](https://pubmed.ncbi.nlm.nih.gov/16120945/)
36. Willer CJ, Li Y, Abecasis GR (2010) METAL: fast and efficient meta-analysis of genomewide association scans. *Bioinformatics* 26: 2190–2191. doi: [10.1093/bioinformatics/btq340](https://doi.org/10.1093/bioinformatics/btq340) PMID: [20616382](https://pubmed.ncbi.nlm.nih.gov/20616382/)
37. McLaren W, Pritchard B, Rios D, Chen Y, Flicek P, et al. (2010) Deriving the consequences of genomic variants with the Ensembl API and SNP Effect Predictor. *Bioinformatics* 26: 2069–2070. doi: [10.1093/bioinformatics/btq330](https://doi.org/10.1093/bioinformatics/btq330) PMID: [20562413](https://pubmed.ncbi.nlm.nih.gov/20562413/)
38. Cingolani P, Platts A, Wang LL, Coon M, Nguyen T, et al. (2012) A program for annotating and predicting the effects of single nucleotide polymorphisms, SnpEff: SNPs in the genome of *Drosophila melanogaster* strain w1118; iso-2; iso-3. *Fly (Austin)* 6: 80–92. doi: [10.4161/fly.19695](https://doi.org/10.4161/fly.19695)

39. Kumar P, Henikoff S, Ng PC (2009) Predicting the effects of coding non-synonymous variants on protein function using the SIFT algorithm. *Nat Protoc* 4: 1073–1081. doi: [10.1038/nprot.2009.86](https://doi.org/10.1038/nprot.2009.86) PMID: [19561590](https://pubmed.ncbi.nlm.nih.gov/19561590/)
40. Adzhubei IA, Schmidt S, Peshkin L, Ramensky VE, Gerasimova A, et al. (2010) A method and server for predicting damaging missense mutations. *Nat Methods* 7: 248–249. doi: [10.1038/nmeth0410-248](https://doi.org/10.1038/nmeth0410-248) PMID: [20354512](https://pubmed.ncbi.nlm.nih.gov/20354512/)
41. Gonzalez-Perez A, Lopez-Bigas N (2011) Improving the assessment of the outcome of nonsynonymous SNVs with a consensus deleteriousness score, Condel. *Am J Hum Genet* 88: 440–449. doi: [10.1016/j.ajhg.2011.03.004](https://doi.org/10.1016/j.ajhg.2011.03.004) PMID: [21457909](https://pubmed.ncbi.nlm.nih.gov/21457909/)
42. Cooper GM, Stone EA, Asimenos G, Green ED, Batzoglou S, et al. (2005) Distribution and intensity of constraint in mammalian genomic sequence. *Genome Res* 15: 901–913. doi: [10.1101/gr.3577405](https://doi.org/10.1101/gr.3577405) PMID: [15965027](https://pubmed.ncbi.nlm.nih.gov/15965027/)