



Altered white matter integrity in individuals with cognitive vulnerability to depression: a tract-based spatial statistics study

Citation

Xiao, Jing, Yini He, Chad M. McWhinnie, and Shuqiao Yao. 2015. "Altered white matter integrity in individuals with cognitive vulnerability to depression: a tract-based spatial statistics study." *Scientific Reports* 5 (1): 9738. doi:10.1038/srep09738. <http://dx.doi.org/10.1038/srep09738>.

Published Version

doi:10.1038/srep09738

Permanent link

<http://nrs.harvard.edu/urn-3:HUL.InstRepos:16121109>

Terms of Use

This article was downloaded from Harvard University's DASH repository, and is made available under the terms and conditions applicable to Other Posted Material, as set forth at <http://nrs.harvard.edu/urn-3:HUL.InstRepos:dash.current.terms-of-use#LAA>

Share Your Story

The Harvard community has made this article openly available.
Please share how this access benefits you. [Submit a story](#).

[Accessibility](#)



OPEN

SUBJECT AREAS:
RISK FACTORS
NEUROSCIENCEReceived
2 October 2014Accepted
11 March 2015Published
18 May 2015Correspondence and
requests for materials
should be addressed to
S.Y. (shuqiaoyao@
163.com)* These authors
contributed equally to
this work.

Altered white matter integrity in individuals with cognitive vulnerability to depression: a tract-based spatial statistics study

Jing Xiao^{1*}, Yini He^{1*}, Chad M. McWhinnie² & Shuqiao Yao^{3,4}

¹Beijing Key Laboratory of Learning and Cognition and Department of Psychology, Capital Normal University, Beijing 100048, China, ²Harvard Medical School, Boston, MA, USA, ³Medical Psychological Research Center, Second Xiangya Hospital, Central South University, Changsha, 410011, China, ⁴Hunan Province Technology, Institute of Psychiatry, Changsha, Hunan, 410011, China.

The microstructure of white matter in patients with major depressive disorder (MDD) has been demonstrated to be abnormal. However, it remains unclear whether these changes exist prior to the onset of disease. In this study, diffusion tensor imaging was used to evaluate white matter integrity in individuals who exhibited cognitive vulnerability to depression (CVD), MDD, and healthy controls (HC). Compared with the HC, MDD exhibited a lower fractional anisotropy (FA) in ten brain regions: the cerebral peduncle, the anterior and posterior limbs of the internal capsule (ALIC and PLIC), the external capsule, the retrolenticular part of the internal capsule (RLIC), the body and splenium of the corpus callosum, the superior and posterior corona radiata, and the cingulum. Moreover, CVD had significantly lower FA in the ALIC, the PLIC, the external capsule, the RLIC, the cerebral peduncle, and the superior corona radiata than did the HC. However, the white matter integrity was not significantly different between the CVD and MDD. These preliminary results indicate that alterations in the white matter observed in CVD may be a marker of vulnerability to MDD and that these alterations may exist prior to the onset of depression.

In recent years, researchers have attempted to better understand why some individuals but not others become depressed following stressful life events. In particular, a model of cognitive vulnerability to depression (CVD) has been developed¹, in which relatively stable aspects of an individual predispose him or her to develop depression following negative life events². In this model, depression is the result of interactions between cognitive vulnerability factors (e.g., diatheses) and certain environmental conditions (e.g., stressors)². The results of the Temple-Wisconsin CVD project have suggested that in the high-cognitive vulnerability group, the lifetime prevalence rate of major depressive disorder (MDD) is 38.7%. The risk of lifetime MDD in the high-cognitive vulnerability group was threefold that of the low-cognitive vulnerability group³.

One of the most prominent CVD models is the hopelessness theory⁴. This theory defines cognitive vulnerability as the tendency of an individual to make particular types of inference regarding causes and consequences. Specifically, when faced with a negative life event, an individual who has a cognitive vulnerability is likely to (1) attribute negative events to stable, global causes; (2) to perceive negative events as having many disastrous consequences; and (3) to infer negative characteristics about the self after negative events⁵. These characteristics further increase the likelihood that hopelessness will develop, which can lead to the onset or recurrence of depression^{6–8}. A growing number of cross-sectional and prospective studies support the theory of CVD^{9–11}.

Recently, various neuroimaging and histological techniques have been used to examine neural mechanisms in the pathogenesis of depression. In these studies, depressed individuals exhibited structural and functional neural abnormalities compared with non-depressed individuals. Moreover, cortical-subcortical neural circuits were found to underlie the neurobiology of depression, especially the frontal-striatal-thalamic and limbic-thalamic-frontal networks^{12–15}. Limited structural and functional imaging data from individuals with cognitive vulnerability also support these models^{16–18}. More specifically¹⁷, functional magnetic resonance imaging scans were performed while participants with MDD or CVD and healthy control (HC) participants engaged in an emotional face matching paradigm. In response to negative emotional faces, the MDD group exhibited increased left



amygdala responses and decreased left dorsolateral prefrontal cortex (DLPFC) responses relative to the HC group. These findings may explain the abnormalities identified in the neural networks that mediate the cognitive modulation of emotions in individuals with CVD. In a study by Nusslock et al. (2011), increased CVD was associated with decreased relative left frontal brain activity at rest in individuals with no prior history or current experience with depression using electroencephalograms. Zhang and colleagues (2012) also compared MDD, CVD, and HC groups using voxel-based morphometry to assess structural differences in the brain. Significant volumetric differences were identified among the three groups in the left precentral gyrus, the right fusiform gyrus, and the right thalamus. It was hypothesised that these findings correlated with negative cognitive styles, as well as an increased risk of depression.

Diffusion tensor imaging (DTI) is a non-invasive method used to investigate the orientation and integration of white matter microstructure *in vivo* via measurements of the diffusion characteristics of water in neural tissue. A commonly used metric in DTI is fractional anisotropy (FA)¹⁹. FA reflects aspects of the membrane integrity and myelin thickness, with decreased FA associated with the disruption of white matter^{15,20}. Decreased FA has been identified in samples obtained from individuals with depression²¹, as well as subjects with genetic or familial vulnerabilities to depression^{15,22,23}. To date, a direct comparison of DTI changes between individuals with MDD and CVD has not been performed. Moreover, it is not clear whether the white matter of individuals with CVD undergoes changes that precede the occurrence or development of depression. This issue is an important area for future research, particularly because white matter abnormalities may represent vulnerability markers for MDD, which could thus identify individuals at greater risk for depression. Therefore, in this study, DTI was used to evaluate and compare the white matter integrity in individuals who exhibited CVD or MDD and in healthy controls.

Results

The demographic characteristics of the participants in this study are listed in Table 1. The effect size/mean FA + SD value of the common significant clusters in the individuals with MDD/CVD compared with the healthy controls are shown in Table 2 and Figure 1. The three groups were not significantly different in terms of age, race, gender, or years of education. An ANOVA was used to compare the results of the CVD, MDD and healthy control groups, and the significant clusters are shown in Figure 2 ($p < 0.01$, voxel > 50). Specifically, a significantly lower FA was identified in the individuals with MDD than in the healthy controls (Table 3, Figure 3). Aberrant FA values were identified in ten regions of the brain: the cerebral peduncle, the anterior limb of the internal capsule (ALIC), the external capsule, the posterior limb of the internal capsule (PLIC), the retrolenticular part of the internal capsule (RLIC), the body and splenium of the corpus callosum, the superior and posterior corona radiata, and the cingulum ($p < 0.001$, corrected for multiple testing). Conversely, a significantly lower FA was identified for the individuals with CVD than for the controls (Table 4, Figure 4). The regions involved in the latter effect included the following: the cerebral ped-

uncle, the ALIC, the external capsule, the PLIC, the RLIC, and the superior corona radiata ($p < 0.05$, corrected for multiple testing). Both the comparison between the individuals with MDD and the healthy controls and between the individuals with CVD and the healthy controls identified these five significantly different clusters, Figure 1). Finally, none of the white matter tracts was associated with the sociodemographic or clinical variables, and there were no differences in the white matter FA values between the CVD and MDD groups. The FA of the in the left ALIC tended to correlate negatively with the Center for Epidemiologic Studies Depression Scale (CES-D) scores ($r = -0.43$, $p < 0.05$) in the MDD group. No other correlation was identified between the FA values of the significant regions and the CES-D scores. We also found no correlation between the FA values of the significant regions and the weakest link scores.

Discussion

To the best of our knowledge, this is the first study to report white matter tract differences in individuals with CVD. Specifically, the current findings indicate that individuals with MDD and CVD both manifest changes in the ALIC, PLIC, RPIC, cerebral peduncle, and superior corona radiata compared with HC individuals. Moreover, these changes were present before the occurrence and development of depression.

The ALIC has received attention in depression research owing to the structural and functional abnormalities that have been reported for these connected regions to ALIC in depression^{24–26}. In the present study, compared with the HC individuals, the individuals with MDD or CVD exhibited a significantly lower FA in the ALIC, which is consistent with accumulating evidence suggesting that damage to the frontal-subcortical circuits underlies the pathophysiology of MDD^{12,27,28}. Moreover, neuroimaging studies show that the medial forebrain bundle (MFB) demonstrates a clear interaction with the reward system, which mediates feelings and expectations of pleasure²⁹. Moreover, the supero-lateral medial forebrain bundle (slMFB) extends from the main trunk of the ventral tegmental area (VTA). This branch shears out laterally, travels ventral to the thalamus and ascends to the inferior portion of the ALIC. The slMFB may be involved in the neurobiology of depression²⁵ and is becoming an increasingly important region for deep brain stimulation (DBS) in treatment-resistant MDD. Furthermore, given that white matter abnormalities have been shown to contribute to a disconnection syndrome between the frontal and subcortical regions and may represent a risk factor for affective disorders²¹, decreased activity in these regions may also impair the ability of individuals to block out negative thoughts³⁰.

The cortical and subcortical areas in the frontal lobe, anterior limb, and genu of the internal capsule are included in the prefrontal subcortical circuit, whereas the cortical subcortical areas in the PLIC are part of the fronto-limbic-striatal circuit¹⁶. These two circuits play important roles in the formation of emotions, cognition and behaviour control⁹, and their roles in primary depression and post-stroke depression have also been investigated. In the present study, both the individuals with CVD and those with MDD exhibited a significantly lower FA in the PLIC, and this finding may account for the cognitive style of individuals with CVD.

Table 1 | Demographic parameters and scores for the analysed cohort

Demographic parameters	HC (n = 22)	MDD (n = 22)	CVD (n = 22)
Age (y)	20.77 ± 1.41	20.14 ± 1.64	20.59 ± 0.91
Gender (M/F)	12/10	12/10	12/10
Education (y)	13.62 ± 1.41	13.84 ± 1.10	13.59 ± 0.80
CESD scores	39.72 ± 7.75	55.68 ± 5.75	40.55 ± 9.60
Weakest link scores	1.07 ± 0.40	1.10 ± 0.61	2.28 ± 0.37

HC, healthy controls; MDD, major depressive disorder; CVD, cognitive vulnerability to depression; CESD, Center for Epidemiologic Studies Depression Scale.



Table 2 | The effect sizes in the individuals with MDD/CVD compared with the healthy controls

Regions of the brain analysed	X*	Y*	Z*	Cohen'd
MDD vs. healthy control				
Cerebral peduncle L	-16	-15	-6	-1.00
Anterior limb of the internal capsule L	-20	-2	15	-1.26
External capsule L	-29	-13	15	-1.00
Posterior limb of the internal capsule L	-26	-18	15	-0.98
Superior corona radiata L	-28	-12	26	-0.66
CVD vs. healthy control				
Cerebral peduncle L	-16	-15	-6	-1.00
Anterior limb of the internal capsule L	-20	-2	15	-1.09
External capsule L	-29	-13	15	-0.72
Posterior limb of the internal capsule L	-26	-18	15	-0.78
Superior corona radiata L	-28	-12	26	-0.39

*: X, Y, and Z stereotaxic coordinates are given in the Montreal Neurological Institute (MNI) space.

In a study of subjects with mild cognitive impairment (MCI) by Zhuang³¹, the left superior corona radiata exhibited lower FA values, thereby suggesting that white matter changes in this brain region may serve as a potential biomarker of MCI. In the present study, the individuals with CVD or MDD also exhibited a significantly higher FA in the superior corona radiata. Thus, this white matter region may contribute to one of the neural mechanisms responsible for CVD.

The external capsule provides a route for cholinergic fibres from the basal forebrain to the frontal, temporal, and parietal cortical areas³². Therefore, it is highly relevant for executive functions, cognitive control, and emotion regulation³³. The lower FA values identified in the external capsule in the present study may indicate a disruption of white matter integrity. These results are consistent with previous studies in which lower FA values in the external capsule were identified in MDD patients than in healthy controls^{25,34}. Taken together, these results suggest that an abnormal decrease in the FA of the external capsule may be related to affect cognitive functions and increase vulnerability to depression.

In conclusion, the results from the current study support the hypothesis that alterations in the white matter microstructure observed in individuals with CVD may be a marker of vulnerability to MDD, and these alterations may exist prior to the onset of disease. Longitudinal studies with larger sample sizes are needed in future studies to confirm the observed microstructural white matter changes and to provide additional mechanistic details about the relationship between alterations in the white matter microstructure

and CVD. It is anticipated that these insights will aid in the development of effective prevention and treatment programs for depression.

Methods

Individuals with cognitive vulnerability to depression (CVD). Individuals were screened using the weakest link approach to determine a cognitive vulnerability score (CVS) for each participant. This approach posits that an individual's most depressogenic vulnerability is the best marker of his/her true propensity to develop depression³⁴. To compute the weakest link composite score for each participant, the participants' scores were standardised based on three inferential styles [standardised score = (data score - mean)/standard deviation (SD)]³⁴. The highest of the three standardised scores was designated as the individual's weakest link score³⁵. The study participants comprised a subset of individuals selected to participate in our CVD Project. The final dataset included 595 undergraduates with a mean weakest link score of 0.42 (SD = 0.93). The CVD group included the participants with scores greater than 1.35 (one SD above the mean of the full group, 0.42 + 0.93), resulting in the identification of 22 individuals with CVD (10 males, 12 females). The selected individuals were subsequently interviewed by two experienced psychiatrists using the Structured Clinical Interview for the DSM-IV (SCID)³⁶ to verify that they were free of affective disorders and other current Axis I disorders. None of the enrolled individuals had a history of major medical or psychiatric illness.

Individuals with MDD. A total of 22 undergraduates with MDD (10 males, 12 females) who had recently experienced their first depressive episode were referred for therapy and recruited as outpatients from the psychology clinic at the Second Xiangya Hospital of Central South University. A diagnosis of MDD was confirmed by two trained psychiatrists using the SCID. None of these patients had previously been diagnosed with an Axis I disorder or received psychiatric medication prior to DTI.

Healthy controls (HC). Similar to the CVD individuals, the HC individuals were also selected based on their Cognitive Style Questionnaire (CSQ) results. The HC group included 22 gender and age-matched individuals (10 males, 12 females) who had received weakest link scores of less than 1.35. These individuals were subsequently interviewed by two experienced psychiatrists to verify they were free of

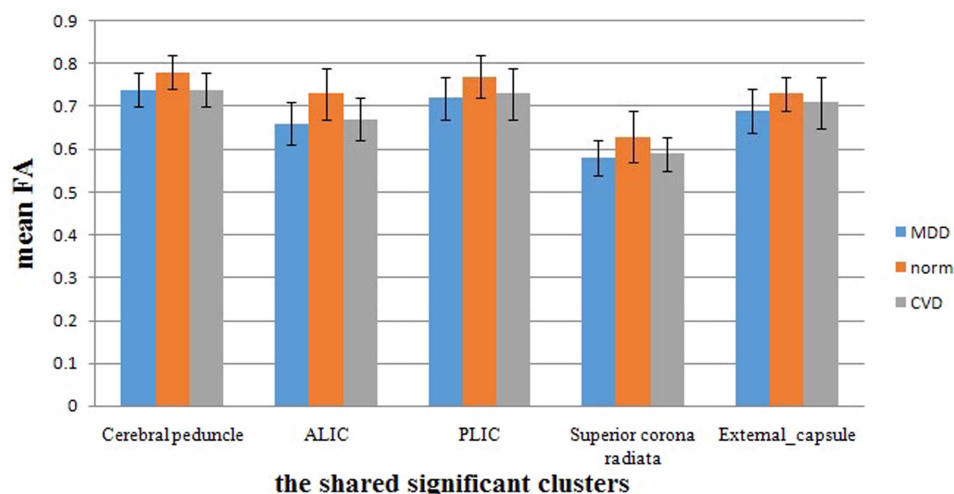


Figure 1 | The mean FA values across the MDD, CVD and healthy control groups for shared significant clusters in the TBSS.

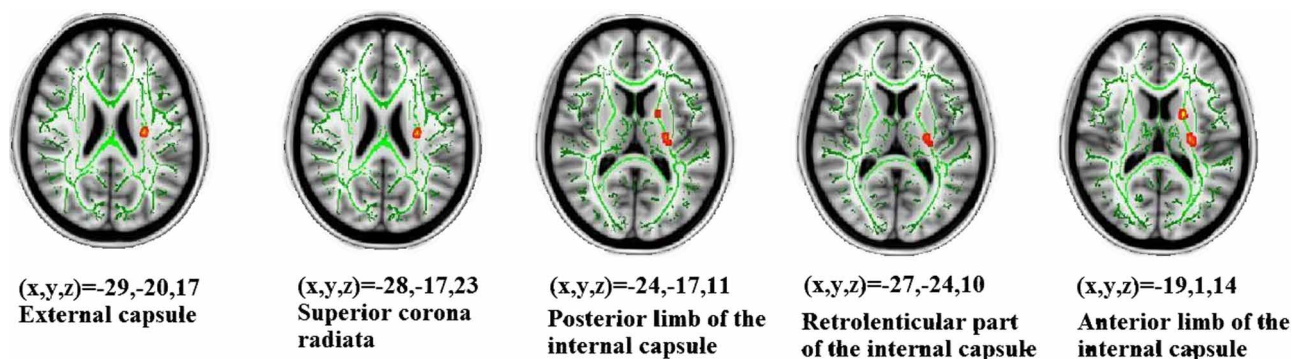


Figure 2 | An ANOVA was used to compare the individuals with CVD, those with MDD and the healthy controls, and the significant clusters are shown ($p < 0.01$, voxel > 50). The background image is a standard MNI152 $1 \times 1 \times 1$ mm³ brain template. Green voxels represent the mean FA identified for the white matter skeleton, and the red-yellow voxels represent the regions in which the FA significantly differed between the MDD, CVD and healthy control groups.

affective disorders and other current Axis I disorders. None of the individuals had a history of major medical or psychiatric illness.

To ensure homogeneity across the three groups, all individuals were 18–24 years of age and had a similar education status. Conversely, individuals were excluded if they had the following medical conditions: significant self-reported medical conditions that could have a significant impact on cognitive function, a lifetime history of substance dependence, substance abuse within the last six months, or self-reported central nervous system disorders (e.g., head injury, seizure disorder, or multiple sclerosis). In addition, all enrolled individuals had normal or corrected-to-normal vision and were right-handed. This study was conducted in accordance with the Declaration of Helsinki and was approved by the Ethics Committee of the Second Xiangya Hospital of Central South University (No: CSMC-201118). All individuals provided written informed consent prior to participation in the study.

Measures. Cognitive Style Questionnaire (CSQ). Abramson and Metalsky created the CSQ based on the hopelessness theory to assess the depressogenic cognitive style. It contains 24 items associated with causes, consequences, and the self. The score for each item ranges from 1 to 7, and increased scores correspond to a more depressogenic cognitive style. In the present study, the Cronbach's alpha for the CSQ subscales ranged from 0.90 to 0.91, suggesting strong internal consistency. Previous studies have also documented the ability of the CSQ to assess the depressogenic cognitive style in Western countries^{3,34} and mainland China^{18,37}.

Center for Epidemiological Studies Depression Scale (CES-D). This scale was developed by Radloff³⁸ and contains 20 items designed to assess depressive symptoms in the general population. The total raw scores can range from 20–80, and increased scores indicate greater levels of depressive symptoms. The Chinese version of the CES-D has been demonstrated to exhibit a high degree of reliability and validity³⁹. In the present study, a Cronbach's alpha value of 0.91 was obtained for the total scale, indicating strong internal consistency.

Edinburgh Handedness Inventory (EHI). The EHI was developed by Oldfield⁴⁰ and is a questionnaire designed to evaluate the handedness of the participants.

Structured Clinical Interview for the DSM-IV (SCID). The SCID is a semi-structured interview that includes modules designed to assess an individual's history and current (within the past month) experience of categorically defined DSM-IV Axis I psychiatric disorders (including mood and anxiety disorders). Currently, the SCID is the "gold standard" for psychiatric diagnosis of MDD. For Chinese patients with mood disorders, the interrater reliability for the SCID diagnoses has a kappa value of

0.76⁴¹. All participants were interviewed prior to DTI by two psychiatrists who have experience with the SCID.

Image acquisition and processing. All individuals underwent a DTI exam at Central South University (Changsha, Hunan, China) using a 1.5-T Siemens Magnetom Symphony scanner and standard head coil. The individuals were provided ear plugs and foam pads to reduce noise and decrease head motion, respectively. The diffusion tensor data were received using a coronal diffusion-weighted, single-shot, spin-echo planar (SE-EPI) imaging sequence parallel to the line of the anterior-posterior commissural. The parameters for this imaging method included: scanned field of view (FOV) = 24 cm, matrix of the exported image = 128 * 128, repetition time (TR) = 12,000 ms, echo time (ET) = 105 ms, excitation frequency (EF) = 5, slice thickness = 4 mm, no gap, and 30 adjoining axial slices. Diffusion-sensitising gradients were applied along 13 non-combining directions ($b = 1000$ s/mm²) and without diffusion weighting ($b = 0$ s/mm²). DCM2NII software (<http://www.cabiati.com/mricron/mricron/dcm2nii.html>) was used to convert the raw DICOM files from the proprietary scanner format to the nifti format, "image". The diffusion-weighted images were analysed using the Functional Magnetic Resonance Imaging of the Brain Library (FSL, Oxford, United Kingdom). Briefly, the FSL eddy-correct tool was used to register all diffuse images in the B0 image space. The FSL bet2 was then used to skull-strip the brain to ensure that only tensors inside the brain were calculated, rather than those in the surrounding air, using a threshold of 0.25. Finally, a FSL DTIFIT tool was applied to calculate the diffusion tensor model at each pixel and obtain a FA image map. After data processing, tract-based spatial statistics (TBSS)³² were used to explore the group differences between the white matter skeletons derived from the FA images. Nonlinear registration was used to align all FA images to a standard space template. A mean FA skeleton, which represented the centres of all tracts common to the group, was then generated. Each individual's aligned FA image was projected onto the mean FA skeleton, and an FA threshold of 0.20 was established to exclude the peripheral tracts. Finally, group differences in FA among the MDD, CVD and healthy controls were assessed using an ANOVA implemented in the FSL randomize function (5000 permutations) of the TBSS. Then, correction for multiple comparisons was conducted using a cluster-based thresholding method with an initial cluster that formed a threshold at clusters with at least 50 voxels and $p < 0.01$ or $p < 0.05$. To label the significant clusters from the TBSS analysis, we used the digital white matter atlas JHU ICBM-DTI-81, which identified 48 white matter tract labels by hand segmentation of a standard-space average of the diffusion MRI tensor maps from 81 normal subjects (see <http://fsl.fmrib.ox.ac.uk/fsl/fslwiki/Atlases>). As shown in Figures 2, 3, and 4, the JHU

Table 3 | FA values in the individuals with MDD compared with the healthy controls

Regions of the brain analysed	X*	Y*	Z*	p-value	Voxel size
Cerebral peduncle	-16	-15	-6	0.001	1534
Anterior limb of the internal capsule	-20	-2	15	0.001	
External capsule L	-29	-13	15	0.001	
Posterior limb of the internal capsule L	-26	-18	15	0.001	928
Retrolenticular part of the internal capsule L	-24	-22	-2	0.001	
Body of corpus callosum	3	-2	26	0.001	
Splenium of the corpus callosum	-14	-33	26	0.001	
Superior corona radiata L	-28	-12	26	0.001	
Posterior corona radiata L	-27	-26	26	0.001	928
Cingulum	-7	-8	38	0.001	

*: X, Y, and Z stereotaxic coordinates are given in the Montreal Neurological Institute (MNI) space.

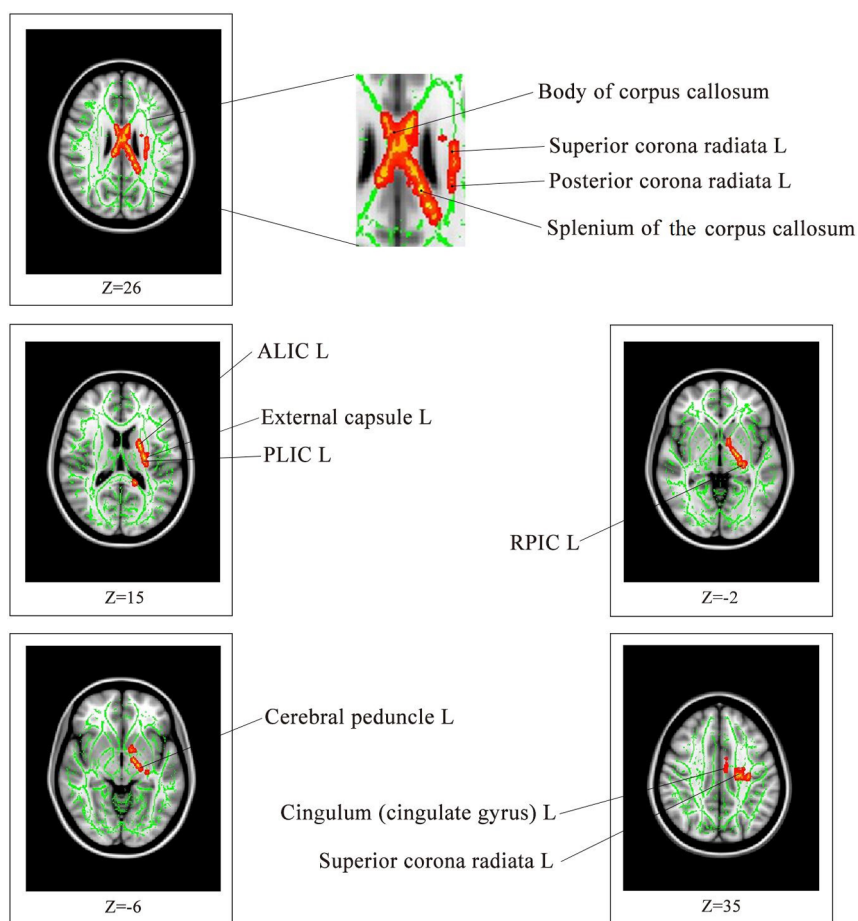


Figure 3 | Compared with the healthy controls, the individuals with MDD exhibited significantly lower FA values in ten brain regions ($p < 0.001$, corrected for multiple comparisons). The background image is a standard MNI152 $1 \times 1 \times 1$ mm³ brain template. The green voxels represent the mean FA detected for the white matter skeleton, and the red-yellow voxels represent regions where the FA is significantly lower in the individuals with MDD than in the healthy controls. ALIC: anterior limb of the internal capsule; PLIC: posterior limb of the internal capsule; RLIC: retrolenticular part of the internal capsule.

WM atlas was overlaid on the WM skeleton of each subject in the ICBM-DTI-81 space, and the white matter clusters were subsequently labelled.

- Abela, J. R., Aydin, C. & Auerbach, R. P. Operationalizing the “vulnerability” and “stress” components of the hopelessness theory of depression: A multi-wave longitudinal study. *Behav Res Ther* **44**, 1565–1583(2006).
- Abela, J. R. & McGirr, A. Operationalizing cognitive vulnerability and stress from the perspective of the hopelessness theory: A multi-wave longitudinal study of children of affectively ill parents. *Br J Clin Psychol* **46**, 377–395(2007).
- Alloy, L. B. *et al.* The Temple-Wisconsin Cognitive Vulnerability to Depression Project: lifetime history of axis I psychopathology in individuals at high and low cognitive risk for depression. *J Abnorm Psychol* **109**, 403–418 (2000).
- Abramson, L. Y., Metalsky, G. I. & Alloy, L. B. Hopelessness depression: A theory-based subtype of depression. *Psychol Rev* **96**, 358 (1989).
- Haefel, G. J. *et al.* Measuring cognitive vulnerability to depression: development and validation of the cognitive style questionnaire. *Clin Psychol Rev* **28**, 824–836 (2008).
- Abramson, L. Y. *et al.* Cognitive vulnerability to depression: Theory and evidence. *J Cogn Psychother* **13**, 5–20 (1999).
- Alloy, L. B. *et al.* Prospective incidence of first onsets and recurrences of depression in individuals at high and low cognitive risk for depression. *J Abnorm Psychol* **115**, 145–156 (2006).
- Just, N., Abramson, L. Y. & Alloy, L. B. Remitted depression studies as tests of the cognitive vulnerability hypotheses of depression onset: a critique and conceptual analysis. *Clin Psychol Rev* **21**, 63–83 (2001).
- Abramson, L. Y. *et al.* Cognitive vulnerability-stress models of depression in a self-regulatory and psychobiological context. *Handbook of depression* (eds Gotlib, I. H. & Hammen, C. L.), 268–294, (Guilford Press, 2002).
- Abramson, L. Y. *et al.* Suicidality and cognitive vulnerability to depression among college students: a prospective study. *J Adolesc* **21**, 473–487(1998).
- Xiao, J. *et al.* ‘Weakest Link’ as a Cognitive Vulnerability Within the Hopelessness Theory of Depression in Chinese University Students. *Stress Health*, doi:10.1002/smi.2571 (2014).
- Rogers, M. A., Bradshaw, J. L., Pantelis, C. & Phillips, J. G. Frontostriatal deficits in unipolar major depression. *Brain Res Bull* **47**, 297–310 (1998).
- Price, J. L. & Drevets, W. C. Neurocircuitry of mood disorders. *Neuropsychopharmacology* **35**, 192–216, doi:10.1038/npp.2009.104 (2010).
- Seminowicz, D. A. *et al.* Limbic-frontal circuitry in major depression: a path modeling meta-analysis. *Neuroimage* **22**, 409–418 (2004).

Table 4 | FA values in the individuals with CVD compared with the healthy controls

Regions of the brain analysed	X*	Y*	Z*	p-value	Voxel size
Anterior limb of the internal capsule L	-22	-3	17	0.05	1543
External capsule L	-25	-10	17	0.05	
Posterior limb of the internal capsule L	-26	-18	15	0.05	
Cerebral peduncle L	-27	-29	17	0.05	
Superior corona radiata L	-14	-13	-6	0.05	

*: X, Y, and Z stereotaxic coordinates are given in the Montreal Neurological Institute (MNI) space.

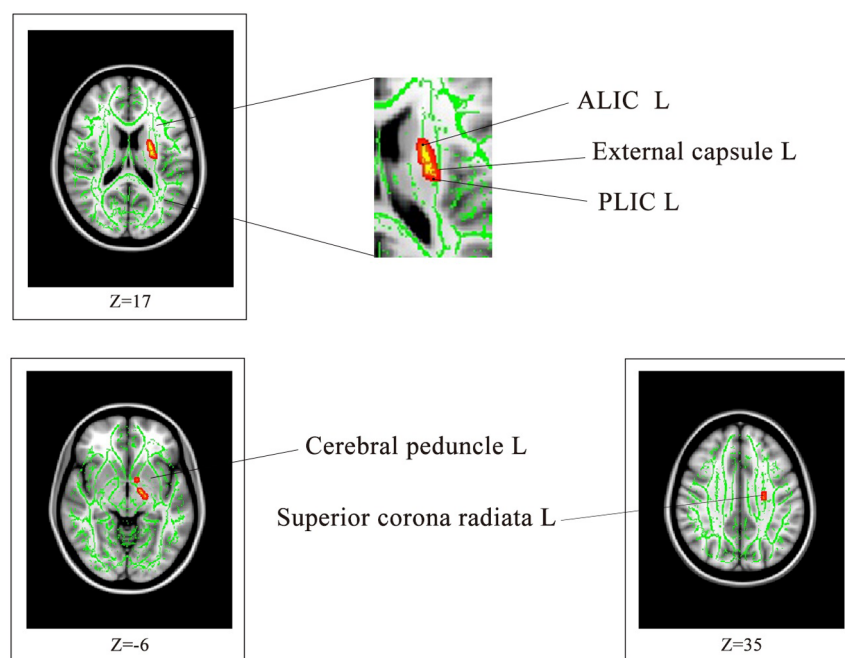


Figure 4 | Compared with the healthy controls, the individuals with CVD exhibited significantly lower FA values in six brain regions ($p < 0.05$, corrected for multiple comparisons). The background image is a standard MNI152 $1 \times 1 \times 1$ mm³ brain template. The green voxels represent the mean FA detected for the white matter skeleton, and the red-yellow voxels represent regions where the FA is significantly lower in the individuals with CVD than in the healthy controls. ALIC: anterior limb of the internal capsule; PLIC: posterior limb of the internal capsule.

15. Huang, H., Fan, X., Williamson, D. E. & Rao, U. White matter changes in healthy adolescents at familial risk for unipolar depression: a diffusion tensor imaging study. *Neuropsychopharmacology* **36**, 684–691 (2011).
16. Zhang, X. *et al.* Gray matter volume abnormalities in individuals with cognitive vulnerability to depression: a voxel-based morphometry study. *J Affect Disord* **136**, 443–452 (2012).
17. Zhong, M. *et al.* Amygdala hyperactivation and prefrontal hypoactivation in subjects with cognitive vulnerability to depression. *Biol Psychol* **88**, 233–242 (2011).
18. Auerbach, R. P., Webb, C. A., Gardiner, C. K. & Pechtel, P. Behavioral and neural mechanisms underlying cognitive vulnerability models of depression. *J Cogn Psychother* **23**, 222–235 (2013).
19. Bennett, I. J., Madden, D. J., Vaidya, C. J., Howard, D. V. & Howard, J. H., Jr. Age-related differences in multiple measures of white matter integrity: A diffusion tensor imaging study of healthy aging. *Hum Brain Mapp* **31**, 378–390 (2010).
20. Johansen-Berg, H. & Behrens, T. E. *Diffusion MRI: from quantitative measurement to in vivo neuroanatomy* (eds Heidi Johansen-Berg & Timothy EJ Behrens), (Academic Press, 2013).
21. Sexton, C. E., Mackay, C. E. & Ebmeier, K. P. A systematic review of diffusion tensor imaging studies in affective disorders. *Biol Psychiatry* **66**, 814–823 (2009).
22. Frodl, T. *et al.* Microstructural Correlates of Resilience in Unaffected Subjects at Risk for Major Depression. *Nature Precedings*, doi:10.1038/npre.2010.4793.2 (2009).
23. Keedwell, P. A. *et al.* Cingulum white matter in young women at risk of depression: the effect of family history and anhedonia. *Biol Psychiatry* **72**, 296–302 (2012).
24. Bracht, T. *et al.* White matter microstructure alterations of the medial forebrain bundle in melancholic depression. *J Affect Disord* **155**, 186–193, doi:10.1016/j.jad.2013.10.048 (2014).
25. Coenen, V. A., Schlaepfer, T. E., Maedler, B. & Panksepp, J. Cross-species affective functions of the medial forebrain bundle-implications for the treatment of affective pain and depression in humans. *Neurosci Biobehav Rev* **35**, 1971–1981 (2011).
26. Choi, K., Craddock, R., Holtzheimer, P., Hu, X. & Mayberg, H. White matter disruption in early- and late-onset depression: a tract-based spatial statistical analysis. *Proc. Intl. Soc. Mag. Reson. Med* **16**, 3553 (2008).
27. Tekin, S. & Cummings, J. L. Frontal-subcortical neuronal circuits and clinical neuropsychiatry: an update. *J Psychosom Res* **53**, 647–654 (2002).
28. Alexopoulos, G. S., Kiosses, D. N., Choi, S. J., Murphy, C. F. & Lim, K. O. Frontal white matter microstructure and treatment response of late-life depression: a preliminary study. *Am J Psychiatry* **159**, 1929–1932 (2002).
29. Bracht, T., Doidge, A. N., Keedwell, P. A. & Jones, D. K. Hedonic tone is associated with left supero-lateral medial forebrain bundle microstructure. *Psychol Med* **45**, 865–874 (2015).
30. Disner, S. G., Beavers, C. G., Haigh, E. A. & Beck, A. T. Neural mechanisms of the cognitive model of depression. *Nat Rev Neurosci* **12**, 467–477 (2011).
31. Zhuang, L. *et al.* White matter integrity in mild cognitive impairment: a tract-based spatial statistics study. *Neuroimage* **53**, 16–25 (2010).
32. Selden, N. R., Gitelman, D. R., Salamon-Murayama, N., Parrish, T. B. & Mesulam, M. M. Trajectories of cholinergic pathways within the cerebral hemispheres of the human brain. *Brain* **121** (Pt 12), 2249–2257 (1998).
33. Korgaonkar, M. S. *et al.* Loss of white matter integrity in major depressive disorder: evidence using tract-based spatial statistical analysis of diffusion tensor imaging. *Hum Brain Mapp* **32**, 2161–2171 (2011).
34. Abela, J. R. & Sarin, S. Cognitive vulnerability to hopelessness depression: A chain is only as strong as its weakest link. *Cognit Ther Res* **26**, 811–829 (2002).
35. Abela, J. R., Skitch, S. A., Adams, P. & Hankin, B. L. The timing of parent and child depression: a hopelessness theory perspective. *J Clin Child Adolesc Psychol* **35**, 253–263 (2006).
36. First, M. B., Spitzer, R. L., Gibbon, M. & Williams, J. B. *Structured Clinical Interview for DSM-IV Axis I Disorders: Patient Edition (February 1996 Final), SCID-I/P* (eds Michael B First, Robert L Spitzer, Miriam Gibbon, & Janet BW Williams), (Biometrics Research Department, New York State Psychiatric Institute, 1998).
37. Xiao, J., He, L. K., Jin, X. Y. & Bai, Y. The cognitive strategies and emotion regulation in high cognitive risk to depression undergraduate students. *Chinese Journal of Behavioral Medicine and Brain Science* **82**, 419–430 (2013).
38. Radloff, L. S. The CES-D scale a self-report depression scale for research in the general population. *Appl Psychol Meas* **1**, 385–401 (1977).
39. Yang, H. J., Soong, W. T., Kuo, P. H., Chang, H. L. & Chen, W. J. Using the CES-D in a two-phase survey for depressive disorders among nonreferred adolescents in Taipei: a stratum-specific likelihood ratio analysis. *J Affect Disord* **82**, 419–430 (2004).
40. Oldfield, R. C. The assessment and analysis of handedness: the Edinburgh inventory. *Neuropsychologia* **9**, 97–113 (1971).
41. So, E. *et al.* The Chinese-bilingual SCID-I/P project: stage 1-reliability for mood disorders and schizophrenia. *Hong Kong Journal of Psychiatry* **13**, 7–18 (2003).
42. Smith, S. M. *et al.* Tract-based spatial statistics: voxelwise analysis of multi-subject diffusion data. *Neuroimage* **31**, 1487–1505, doi:10.1016/j.neuroimage.2006.02.024 (2006).

Acknowledgments

This work was supported by a grant from the National Natural Science Foundation of China (Grant No. 31200790) awarded to Dr. Jing Xiao. We would like to thank all of the individuals who participated in this study, as well as their families.



Author contributions

S.Q.Y. and X.J. designed the research. X.J. and H.Y.N. performed the experiment, collected the data and analysed the data. Chad M.M contributed to the analytic tools. H.Y.N. and X.J. prepared the figures and wrote the manuscript.

Additional information

Competing financial interests: The authors declare no competing financial interests.

How to cite this article: Xiao, J., He, Y., McWhinnie, C.M. & Yao, S. Altered white matter

integrity in individuals with cognitive vulnerability to depression: a tract-based spatial statistics study. *Sci. Rep.* 5, 9738; DOI:10.1038/srep09738 (2015).



This work is licensed under a Creative Commons Attribution 4.0 International License. The images or other third party material in this article are included in the article's Creative Commons license, unless indicated otherwise in the credit line; if the material is not included under the Creative Commons license, users will need to obtain permission from the license holder in order to reproduce the material. To view a copy of this license, visit <http://creativecommons.org/licenses/by/4.0/>