



Stick or grip? Co-evolution of adhesive toepads and claws in Anolis lizards

Citation

Crandell, Kristen E., Anthony Herrel, Mahmood Sasa, Jonathan B. Losos, and Kellar Autumn. 2014. "Stick or Grip? Co-Evolution of Adhesive Toepads and Claws in Anolis Lizards." *Zoology* 117 (6) (December): 363–369. doi:10.1016/j.zool.2014.05.001.

Published Version

doi:10.1016/j.zool.2014.05.001

Permanent link

<http://nrs.harvard.edu/urn-3:HUL.InstRepos:20444690>

Terms of Use

This article was downloaded from Harvard University's DASH repository, and is made available under the terms and conditions applicable to Open Access Policy Articles, as set forth at <http://nrs.harvard.edu/urn-3:HUL.InstRepos:dash.current.terms-of-use#OAP>

Share Your Story

The Harvard community has made this article openly available.
Please share how this access benefits you. [Submit a story](#).

[Accessibility](#)

1 ***Stick or grip? Co-evolution of adhesive toepads and claws in Anolis lizards***

2 Kristen E. Crandell¹, Anthony Herrel^{2,3}, Mahmood Sasa^{4,5}, Jonathan B. Losos⁶, Kellar
3 Autumn⁷

4
5 1. Field Research Station at Fort Missoula, Division of Biological Sciences, University
6 of Montana, Missoula, MT 59812, USA

7 email : kristen.crandell@umontana.edu

8 2. UMR 7179 C.N.R.S/M.N.H.N., Département d'Ecologie et de Gestion de la
9 Biodiversité, 57 rue Cuvier, Case postale 55, 75231, Paris Cedex 5, France.

10 3. Ghent University, Evolutionary Morphology of Vertebrates, K.L. Ledeganckstraat
11 35, B-9000 Gent, Belgium

12 4. Palo Verde Biological Station, Organization for Tropical Studies, 0676-2050 San
13 Jose, Costa Rica

14 5. Instituto Clodomiro Picado, Universidad de Costa Rica, San Jose, Costa Rica

15 6. Museum of Comparative Zoology and Department of Organismic and Evolutionary
16 Biology, Harvard University, 26 Oxford Street, Cambridge, MA 02138, USA

17 7. Department of Biology, Lewis & Clark College, Portland, OR 97219, USA

18 **Pages: 16**

19 **Figures: 6**

20 **Tables: 1**

21 **Key Words:** *Anolis*; adhesion; claw; toepad; ecomorphology; clinging; mainland

22

1
2
3
4
5
6
7
8
9
10
11
12
13
14
15
16
17
18
19
20
21
22
23
24
25
26
27
28
29
30
31
32
33
34
35
36
37
38
39
40
41
42
43
44
45
46
47
48
49
50
51
52
53
54
55
56
57
58
59
60
61
62
63
64
65

23 ABSTRACT

24 Exploring the relationship between phenotype and performance in an
25 ecological and evolutionary context is crucial to understand the adaptive nature of
26 phenotypic traits. Despite their ubiquity in vertebrates, few studies have examined
27 the functional and ecological significance of claw morphologies. Here we examine
28 the adhesive toepad and claw system of *Anolis* lizards. Claw characters are
29 significantly different between lizards classified as arboreal (perch height > 1 m)
30 and non-arboreal (perch height < 1 m). Arboreal species possess significantly higher
31 and longer claws, and show trends toward decreased claw curvature and wider claw
32 tip angles. Toepad size and claw length and height are tightly correlated with each
33 other and with perch height, suggesting that the adhesive toepad and gripping claw
34 have co-evolved to accommodate different habitats. The functional morphology and
35 evolution of claws are ripe areas for future investigation.

36 INTRODUCTION

37 Studying the link between phenotype and performance is necessary for
38 insight in to the adaptation of form and function (Arnold, 1983). The functional
39 significance of claws is not well studied, despite their ubiquity throughout
40 vertebrates. Claws are known to increase available habitat (Cartmill, 1974), yet the
41 link between morphological and habitat use variation is unknown. Here, we explore
42 the claw in relation to a second structure used in attachment, the adhesive toepad,
43 in *Anolis* lizards.

44 Anoles are an ideal model organism with which to unravel potential
45 ecological contributions of claws, as they occupy a vast array of habitats with
46 predictable evolutionary trajectories (Losos, 2009). *Anolis* lizards comprise a
47 diverse clade that has undergone adaptive radiation on the Caribbean islands of the
48 Greater Antilles, producing species of similar ecology and morphology termed
49 “ecomorphs” that have evolved independently on each island (Williams, 1983).
50 These lizards have been the focus of many studies examining the relationships

1
2
3
4
5
6
7
8
9
10
11
12
13
14
15
16
17
18
19
20
21
22
23
24
25
26
27
28
29
30
31
32
33
34
35
36
37
38
39
40
41
42
43
44
45
46
47
48
49
50
51
52
53
54
55
56
57
58
59
60
61
62
63
64
65

51 between morphology, performance, and ecology (see Losos, 2009 for a review). A
52 particularly striking feature of anoles is the adhesive toepad, which enables the
53 animal to move across smooth substrates with little difficulty. Toepads are thought
54 to be a key innovation in anoles because their evolution may have allowed these
55 lizards to occupy a larger portion of the available habitat than previously possible,
56 thus permitting their radiation and diversification (Warheit et al., 1999).

57 Toepads are effective in permitting anoles to expand their habitat use due to
58 their attachment abilities: they function best on smooth surfaces, such as leaves and
59 smooth tree bark. Microscopic hair-like structures on the ventral pad, termed setae,
60 adhere to substrates via van der Waals forces (Autumn et al., 2002; Puthoff et al.,
61 2010). Among anole species, clinging ability varies with habitat use. Species that
62 occur higher in the tree canopy possess larger toepads, and are capable of producing
63 greater shear forces (Elstrott and Irschick, 2004; Macrini et al., 2003). This variation
64 suggests that the evolution of adhesive toepads may have been critical for
65 occupation of arboreal habitats, and thus may have played a major role in the
66 diversification of Caribbean anoles into a distinct set of ecomorphs.

67 An often-neglected feature of *Anolis* relevant to clinging is their claws. Like
68 almost all other lizard species, anoles possess claws, and variation in claw
69 morphology may be related to differences in habitat use. Unfortunately, claws have
70 been overlooked not only in anoles, but also in most amniotes. Vertebrates with
71 claws can occupy larger portions of the habitat than non-clawed animals (Cartmill,
72 1974). However, the functionality of claws is less understood (see Maddin and Reisz,
73 2007 and Zani, 2000). Some aspects of claw shape are known to affect attachment
74 ability, including claw height (the distance measured from dorsal to ventral at the
75 base of the claw Zani, 2000). In animals such as beetles, claws interact with surface
76 irregularities in two ways: interlocking and friction. When surface irregularities are
77 larger than claw tip diameter, the claw mechanically interlocks with the
78 irregularities. In contrast, when surface irregularities are smaller than claw tip
79 diameter, attachment results from frictional forces. In this instance, if the tangent

1
2
3
4
5
6
7
8
9
10
11
12
13
14
15
16
17
18
19
20
21
22
23
24
25
26
27
28
29
30
31
32
33
34
35
36
37
38
39
40
41
42
43
44
45
46
47
48
49
50
51
52
53
54
55
56
57
58
59
60
61
62
63
64
65

80 between the claw and the irregularity is too low, the claw slips (Dai et al., 2002). As
81 such, mechanical interlocking (accomplished with a smaller claw tip relative to
82 substrate roughness) is often times stronger than frictional attachment, with a
83 lower likelihood of failure. Thus, the ability to create a mechanical attachment,
84 rather than a friction-based attachment, is improved with smaller claw tips.
85 Decreasing the size (or effective angle) of the tip increases the likelihood of surface
86 irregularities being larger, offering more opportunity for mechanical attachment. In
87 fact, in artificial claws, decreasing the tip's effective angle significantly improves the
88 strength of attachment (Provancher et al., 2004).

89 However, understanding the broader relationship between claw morphology
90 and habitat use is not yet possible. A study linking claw morphology directly to
91 habitat use in birds indicates that ground-dwelling species have significantly less
92 curved claws than perching species, and species that climb have claws with higher
93 curvature than both ground and perch dwellers (Feduccia, 1993). Similar patterns
94 have been observed in lizards: arboreal and saxicolous species have claws with
95 higher curvature (Tulli et al., 2009). Some additional evidence for the importance of
96 claws exists in a single species, the ecologically variable *Anolis cybotes*; individuals
97 in more rocky areas appear to have more curved claws (Wollenberg et al., 2013).

98 It is reasonable to predict that the claw and adhesive toepad operate under
99 disparate conditions. The toepad functions best on relatively smooth, homogenous
100 surfaces. The attachment between microscopic hair-like structures of the ventral
101 pad and the surface is modeled to be maximal on smoother surfaces (Persson and
102 Gorb, 2003; Russell and Johnson, 2013), and performance declines with increasing
103 surface roughness (Vanhooydonck et al., 2005). In contrast, claws appear to
104 maximize functionality on very rough surfaces, where mechanical interlocking of
105 the claw is often-times stronger than friction forces on smoother surfaces (Dai et al.,
106 2002). Thus, it appears both structures are optimal in two different scenarios. This
107 observation was first put forth by Mahendra (1941), who observed following claw
108 removal, *Hemidactylus* geckos were unable to attach to rough surfaces, but

1
2
3
4 109 attachment to smooth surfaces was unaffected. Further recent explorations are
5
6 110 limited, but best evidenced in an analysis of performance and morphology. Zani
7
8 111 (2000) found that in 85 species of lizard, toe width and lamellae number is
9
10 112 correlated with attachment ability to smooth surfaces, while claw height is
11
12 113 correlated with rough surface attachment.
13

14
15 114 Examining both the adhesive toepad alongside the claw may reveal ecological
16
17 115 patterns hitherto unknown, or previously overlooked and attributed to toepad
18
19 116 function alone. Here, we explore the relationship between toepad clinging ability,
20
21 117 claw morphology, and habitat use in *Anolis*. We test for associations between claw
22
23 118 morphology and habitat use. We predict that arboreal species with higher perch
24
25 119 heights will have claw morphologies associated with improved attachment abilities:
26
27 120 higher and longer (Zani, 2000), more curved (Feduccia, 1993), and sharper tips (Dai
28
29 121 et al., 2002). We also test if phylogenetically corrected features of claws that are
30
31 122 thought to improve attachment co-vary with toepad adhesion ability, given that
32
33 123 toepads also correlate with habitat (Elstrott and Irschick, 2004). Our available
34
35 124 lizards are mainland species, and as such we also confirm that mainland species
36
37 125 follow the same trends as island species by testing for a positive relationship
38
39 126 between toe force production and perch height (Irschick et al., 1997; Macrini et al.,
40
41 127 2003).
42

43 128

44 45 129 METHODS

46 47 48 130 *Study area and species*

49
50
51 131 Fieldwork occurred at La Selva Biological Station, Playa Piro, and Palo Verde
52
53 132 Biological Station in Costa Rica, and Gamboa, Panama. A total of 12 species was
54
55 133 studied (see table 1). To capture animals and determine perch height, we walked
56
57 134 along trails daily when lizards were active and recorded data for any individual
58
59 135 sighted. Perch height was measured as distance from the ground to the individual's
60
61
62
63
64
65

1
2
3
4 136 original position, and perch diameter was measured at the location the lizard was
5
6 137 first observed. Lizards were captured by hand or noose and kept for no longer than
7
8 138 48 hours. Lizards were kept in one-gallon plastic bags, transported to the field lab
9
10 139 and returned to their original location following performance trials.

11
12
13 140 *Adhesion performance*

14
15
16 141 Following capture, one person (KEC) took shear-force measurements. A dual-
17
18 142 range force sensor (Vernier) was attached to a vertical acetate covered glass
19
20 143 microscope slide with a custom plexiglass attachment and butterfly clip. For each
21
22 144 subject, the fourth (longest) digit was isolated and gently applied to the acetate
23
24 145 sheet (Fig. 1). These performance measures only reflect attachment ability of the
25
26 146 adhesive toepad, not the claw, because the claw was not able to penetrate the
27
28 147 acetate coating. The anole was pulled by hand at an approximately constant speed,
29
30 148 and the shear force was recorded at 40 Hz. Each subject underwent three repeated
31
32 149 trials for left and right fourth toe.

33
34 150 *Morphology*

35
36
37 151 For all species in this study, we measured toepad and claw morphological
38
39 152 characters from preserved specimens at the Museum of Comparative Zoology,
40
41 153 Harvard University, and specimens from the Museum of Southwestern Biology,
42
43 154 University of New Mexico (see appendix for list). A scanner (Epson Perfection 4900
44
45 155 and V500) digitized images of the fourth right hind digit, with the claw flattened
46
47 156 sagittally against the scanner. Measurements were taken with ImageJ (1.4g,
48
49 157 Rasband). Morphological characters of the toe included toepad area, measured from
50
51 158 where the pad begins to widen (i.e., where the next most distal lamellae is longer
52
53 159 than the previous), and lamellae number, counted as lamellae contained within
54
55 160 toepad area. Measurements of the claw included: height, length, curvature (as
56
57 161 measured by Zani, 2000), and tip angle (Fig. 2).

58
59 162

1
2
3
4 163 *Analysis*
5
6

7 164 For all species, we determined descriptive statistics for all continuous
8
9 165 characters. To meet assumptions of normality and homoscedasticity, all
10
11 166 measurements except for toepad force and claw tip angle were log-10 transformed
12
13 167 prior to analysis. We corrected for size in characters that significantly correlated
14
15 168 with SVL. To do so, we regressed log-10 adjusted values against log-10 adjusted SVL
16
17 169 and calculated residuals, which were used for subsequent regressions.
18

19
20 170 A bivariate Pearson correlation on the log-10 transformed data was used to
21
22 171 determine correlations among traits. Log-10 transformed data were then used as
23
24 172 input for an independent contrasts analysis (Felsenstein, 1985) using the GEIGER
25
26 173 package in R (Harmon et al., 2008). The most complete phylogenetic tree of *Anolis*
27
28 174 (Nicholson et al., 2005) served as the basis for analyses (Fig. 3). Panamanian species
29
30 175 described in Castañeda and de Queiroz (2013) were added as sister taxa, and *Anolis*
31
32 176 *apletophallus* was placed as sister taxon to *Anolis limifrons* (S. Poe, pers. comm.).
33
34 177 Branch lengths of the phylogeny were unknown, and were set to arbitrary lengths
35
36 178 using a Grafen transformation (Grafen, 1989). The calculated residual values of
37
38 179 morphological, performance, and habitat use variables were input into a linear
39
40 180 regression analysis to determine correlation coefficients. An analysis of variance
41
42 181 (ANOVA) tested for statistical significance for all regressions. All analyses presented
43
44 182 account for phylogeny.

45 183 We also compared claw variables between two groups of anoles classified as
46
47 184 “arboreal” or “non-arboreal.” Arboreal species were defined as those with an
48
49 185 average perch height greater than one meter, whereas non-arboreal were those
50
51 186 found perching below one meter. Species with mean perch heights less than one
52
53 187 meter are generally seen on or near the ground, whereas those above one meter are
54
55 188 those that are often seen in the canopy. Claw morphologies (claw curvature, claw tip
56
57 189 angle, claw height, and claw length) were first compared with a phylogenetically
58
59 190 corrected MANOVA. Each character was then compared between groups with a
60
61 191 phylogenetically corrected ANOVA. One-tailed tests were used in all comparisons, as
62
63
64
65

1
2
3
4 192 we had a-priori predictions for claw curvature (Feduccia, 1993), claw tip angle (Dai
5
6 193 et al., 2002), and claw height and length (Zani, 2000). It should be noted that Zani
7
8 194 (2000) found the correlation between claw length and clinging ability on rough
9
10 195 surfaces was not robust to changes in phylogenetic branch lengths in one out of four
11
12 196 models. Both phylogenetic analyses used the GEIGER package in R (Harmon et al.,
13
14 197 2008).

16 198 RESULTS

19 199 *Morphology and performance*

22 200 Table 1 lists the mean \pm SE for all morphological variables and toepad force
23
24 201 production. All variables were size corrected, with analyses performed on the
25
26 202 residuals of the data regressed against body size (see methods), with the exception
27
28 203 of claw tip angle ($p=0.68$, $r^2=0.02$) and claw curvature ($p=0.91$, $r^2=0.001$), because
29
30 204 they were uncorrelated to overall body size. All correlations are the result of
31
32 205 phylogenetically independent contrasts to account for ancestral relatedness.

34
35 206 Adjusted toepad area correlates positively with the size adjusted variables
36
37 207 claw height ($p<0.001$, $r^2=0.65$, d.f.=1,10), claw length ($p=0.03$, $r^2=0.35$, d.f.=1,10),
38
39 208 and non-size adjusted claw curvature ($p=0.05$, $r^2=0.26$, d.f.=1,10). Pad area also
40
41 209 correlates positively with toepad force production following corrections for size
42
43 210 ($p<0.001$, $r^2=0.75$, d.f.=1,10). Toepad lamella number exhibits similar relationships,
44
45 211 correlating positively with claw height ($p=0.02$, $r^2=0.42$, d.f.=1,10), claw length
46
47 212 ($p=0.03$, $r^2=0.38$, d.f.=1,10), and toepad force production ($p<0.001$, $r^2=0.83$,
48
49 213 d.f.=1,10).

50
51 214 A positive correlation also occurs between toepad force production and claw
52
53 215 height ($p=0.01$, $r^2=0.51$, d.f.=1,10) and claw length ($p=0.02$, $r^2=0.46$, d.f.=1,10) (Fig.
54
55 216 4). Force production and claw curvature are also related, but the relationship is not
56
57 217 statistically significant ($p=0.08$, $r^2=0.30$, d.f.=1,9). No relationship is present
58
59 218 between force production and claw tip angle ($p=0.98$, $r^2<0.0001$, d.f.=1,10).

1
2
3
4 219 *Habitat use*
5
6

7 220 A positive correlation exists between perch height and toepad shear-force
8
9 221 ($p=0.006$, $r^2=0.58$, $d.f.=1,9$) (Fig. 5), but no correlation occurs between adjusted
10
11 222 force production and perch diameter ($p=0.22$, $r^2=0.16$, $d.f.=1,9$). Perch height does
12
13 223 not linearly correlate with claw variables, including claw height ($p=0.43$, $r^2=0.07$,
14
15 224 $d.f.=1,9$), claw length ($p=0.26$, $r^2=0.14$, $d.f.=1,9$), claw curvature ($p=0.56$, $r^2=0.04$,
16
17 225 $d.f.=1,9$), and claw tip angle ($p=0.90$, $r^2=0.002$, $d.f.=1,9$).
18

19
20 226 We also compared claw variables with binomially categorized habitat by
21
22 227 dividing anoles in to two classes: “arboreal,” with average perch heights of over one
23
24 228 meter, and “non-arboreal,” with average perch heights below one meter. We found
25
26 229 general trends in all claw morphologies between our arboreal categories
27
28 230 (phylogenetic MANOVA $p=0.054$). Claw tip angle was close to statistically different
29
30 231 between categories ($p=0.054$, Fig. 6A), as was claw curvature ($p=0.054$, Fig. 6B).
31
32 232 Both claw height ($p=0.007$, Fig. 6C) and claw length ($p=0.029$, Fig. 6D) were
33
34 233 statistically significantly different between groups.
35

36 234
37

38
39 235 DISCUSSION
40
41

42 236 Our study is one of the first to examine toe and claw morphology in a
43
44 237 vertebrate with an eye towards performance in a natural environment. We find
45
46 238 support for both of our hypotheses. First, the adhesive toepad of *Anolis* species co-
47
48 239 varies with claw morphology. Secondly, all claw characters measured are associated
49
50 240 with habitat use.

51 241 We found strong evidence for co-evolution between adhesive toepads and
52
53 242 claws in size-corrected correlations between toepad size and claw height and length
54
55 243 (Fig. 4). Adhesive toepads and claws provide clinging capability in different
56
57 244 substrate conditions: smooth and rough, respectively. Arboreal animals encounter
58
59 245 both types of surfaces as they move on leaves, a smooth substrate, and woody
60
61
62
63
64
65

1
2
3
4 246 vegetation, a rough substrate; hence, it is not surprising that more arboreal species,
5
6 247 needing greater attachment ability, should have better developed claws and toepads.
7
8

9 248 We found strong trends and significant differences between species grouped
10 249 as arboreal (mean perch height > 1 m) and non-arboreal (mean perch height < 1 m).
11
12 250 A phylogenetic MANOVA of all claw morphologies came very close to statistical
13
14 251 significance at $p = 0.054$, indicating that claw characters are likely related to perch
15
16 252 height. With phylogenetic ANOVAs for each character, we were able to dissect this
17
18 253 trend. Claw curvature and claw tip angle were not statistically significant between
19
20 254 groups, but both showed major trends in that direction, with p values very close to,
21
22 255 but slightly above, 0.05. This trend does not fall in line with increased claw
23
24 256 curvature in arboreal birds in comparison to ground-dwelling birds (Feduccia,
25
26 257 1993). Given that claw sharpness (measured here as a smaller tip angle) improves
27
28 258 attachment ability (Dai et al., 2002; Provancher et al., 2004), it is also surprising that
29
30 259 arboreal species trend toward less pointed claw tips. We predict with larger sample
31
32 260 sizes, a significant trend would appear. These differences suggest further studies
33
34 261 examining claw function are vital. Both claw height and length were significantly
35
36 262 different between the two groups (Fig. 5). Claw height improves attachment ability
37
38 263 on rough surfaces (Zani, 2000). Interestingly, adhesive pad area is also correlated
39
40 264 with perch height (Elstrott and Irschick, 2004). Together, differences in claw shape
41
42 265 and toepad function in comparison to perch height serve as further evidence for the
43
44 266 co-evolution between claws and pads.

45
46 267 Despite strong differences between arboreal and non-arboreal morphologies,
47
48 268 we did not find linear correlations between claw characters and perch height in this
49
50 269 study. Arboreality implies a heightened need for both attachment systems, to
51
52 270 maintain attachment during motion and to avoid falling. However, the functionality
53
54 271 of these systems differs in their basic attachment mechanics. In particular, the
55
56 272 toepad area is continuous with an increase in surface area of the pad resulting in an
57
58 273 increase in clinging ability. In contrast, claw function may not be continuous – once
59
60 274 a certain threshold is reached in size or shape, an increase in size or further changes
61
62
63
64
65

1
2
3
4
5
6
7
8
9
10
11
12
13
14
15
16
17
18
19
20
21
22
23
24
25
26
27
28
29
30
31
32
33
34
35
36
37
38
39
40
41
42
43
44
45
46
47
48
49
50
51
52
53
54
55
56
57
58
59
60
61
62
63
64
65

275 in shape may confer no more functional, and therefore selective, advantage. For
276 example, higher claws may serve no better than slightly lower ones, as both are
277 capable of mechanical interlocking with the substrate. This is in sharp contrast with
278 toepad area, where increased size confers a linear increase in force. Thus, certain
279 morphologies will be able to accommodate rough substrates, without regard to the
280 actual perch height.

281 Our study focused on the two ecological standards for anoles: perch height
282 and diameter. While we found several intriguing patterns with perch height, none
283 of our measured variables correlated with perch diameter. In a study by Macrini et
284 al. (2003), perch diameter in mainland and island anoles correlates with pad area.
285 However, we found no such relationship here. Mainland species vary in habitat use,
286 and with our relatively small sample size, such patterns may not appear due to
287 higher ecological variation of mainland anoles (Schaad and Poe, 2010). Further,
288 variation in claws may not reflect ecological differences on such a minor scale. In
289 order to stay attached to a vertical perch, the forces produced by pushing the left
290 and right limbs in to the perch must be 90 degrees or less in order to support body
291 weight. Claws are known to help reduce this effective angle (Biewener, 2003;
292 Cartmill, 1974). However, at perch diameters less than a body width, where most of
293 our species were observed, claws are not necessary as the angle between limbs is
294 much less than 90. Thus, a non-existent relationship between perch diameter and
295 claw morphologies agrees with theory.

296 Claw characters may prove important in ecological contexts not reported in
297 this study. In particular, claw height improves attachment ability on rough surfaces
298 (Zani, 2000). Thus, we predict that improved claw morphology (height, length,
299 curvature, and sharpness) is also correlated with surface roughness. This prediction
300 is opposite that which is known in adhesive toepads, which function best on smooth
301 surfaces (Vanhooydonck et al., 2005). Further, the functional interaction of claw
302 and substrate is unknown. Claws may be used to actively pierce substrates, or attach
303 solely due to passive friction. If claws are used to pierce, our results may be

1
2
3
4
5
6
7
8
9
10
11
12
13
14
15
16
17
18
19
20
21
22
23
24
25
26
27
28
29
30
31
32
33
34
35
36
37
38
39
40
41
42
43
44
45
46
47
48
49
50
51
52
53
54
55
56
57
58
59
60
61
62
63
64
65

304 confounded by the wearing-down of the claw structure, as observed in artificial
305 claw systems (Provancher et al., 2004). Use of the claw is likely to vary with size and
306 morphology of the vertebrate, as well as locomotor style. For example, birds show a
307 variety of toe organizations – varying from one to two opposing toes in various
308 configurations. Alongside the differences in muscular arrangement of the flexors
309 and extensors, this variation may influence whether the claw is actively piercing or
310 passively attaching to a substrate. Body size and shape has the potential to further
311 confound claw use. For example, in four-legged vertebrates, the smaller species
312 tend to have a more sprawled posture, while larger species are more upright
313 (Biewener, 1989). The distance and angle between opposing limbs likely affects the
314 effective angle of the claw relative to the substrate – especially on substrates with a
315 limited diameter (Cartmill, 1974). Behavioral and ecological data in lizards would
316 shed light on claw use, body size, and locomotion, yet are lacking for most of the
317 species studied here. For studies outside of *Anolis*, understanding body size, posture,
318 and foot morphology will be crucial to compare claw morphologies across taxa.

319 Lastly, although not the focus of our study, we found that mainland anoles
320 studied here show similar ecological patterns to island species. In island species,
321 toepad force production positively correlates with perch height (Elstrott and
322 Irschick, 2004). This potential trend was unknown in mainland species, particularly
323 because mainland species have dramatically smaller adhesive toepads (Macrini et al.,
324 2003). Whether or not this difference in size indicates mainland species have less
325 clinging ability remains to be tested, as island studies are not comparable to our
326 data and appear more variable in sampling technique. Moreover, our study focused
327 on a single digit, while previous studies measured force production in the 10
328 forelimb digits (Irschick et al., 1996). Additionally, mainland species might
329 experience more diversity in textures and selection for claw characters might not be
330 as strong as in an island setting. Understanding potential differences and similarities
331 between clades is of particular interest, as island and mainland species appear to
332 have different patterns of morphological variation (Schaad and Poe, 2010; Velasco
333 and Herrel, 2007).

1
2
3
4
5
6
7
8
9
10
11
12
13
14
15
16
17
18
19
20
21
22
23
24
25
26
27
28
29
30
31
32
33
34
35
36
37
38
39
40
41
42
43
44
45
46
47
48
49
50
51
52
53
54
55
56
57
58
59
60
61
62
63
64
65

334 Further studies exploring both mainland and island species in tandem are
335 necessary to elucidate how toepad morphologies differ between populations. Such
336 studies must use caution when collecting or comparing adhesion performance data
337 to previously published values. Our data were collected in the field and may have
338 been influenced by environmental conditions including humidity, which may reduce
339 (Niewiarowski et al., 2008; Stark et al., 2012) or increase (Chen and Gao, 2010;
340 Pesika et al., 2009; Prowse et al., 2011; Puthoff et al., 2010) clinging ability in
341 biological adhesives. In particular, high humidity environments change the
342 mechanical properties of the microscopic setae, increasing adhesion abilities
343 (Prowse et al., 2011; Puthoff et al., 2010). Similarly, increased stress of being
344 sampled in the field may impair performance. Further studies across *Anolis* with
345 standardized methods, alongside increased sample sizes, will improve our
346 understanding of relationships among pad, claw, and habitat use.

347 Here we have shown the ecological importance of claw morphology. Anoles
348 found higher in the forest have longer and higher claws, with trends toward
349 decreased claw curvature and increased claw tip angle. These results indicate the
350 importance of claws to habitat use. As almost all vertebrates have claws, this
351 character is ripe for further study. Our study also indicates that claws and adhesive
352 toepads have coevolved in *Anolis*. However, they likely serve partially differing
353 functions; a hypothesis that requires further research on the interaction between
354 the toe and natural surfaces. Understanding this interaction will entail an
355 integration of micro-scale studies of single foot-hairs (Autumn, 2006; Autumn et al.,
356 2000; Liang et al., 2000) and claw tips (Dai et al. 2002) with macro-scale studies of
357 the interaction between a variety of natural and artificial surfaces with whole claws
358 (Provancher et al. 2004) and toepads.

359
360
361

1
2
3
4
5
6
7
8
9
10
11
12
13
14
15
16
17
18
19
20
21
22
23
24
25
26
27
28
29
30
31
32
33
34
35
36
37
38
39
40
41
42
43
44
45
46
47
48
49
50
51
52
53
54
55
56
57
58
59
60
61
62
63
64
65

362 Acknowledgements

363 Field work was arranged through the Organization for Tropical Studies, Duke University,
364 Guido Saborío from Amigos de Osa, and the Smithsonian Tropical Research Institute,
365 under research permit numbers SINAC 123-2008 del Ministerio del Ambiente y Energia
366 – Sistema Nacional de areas de Conservacion and SE/A-64-09 del Autoridad Nacional
367 del Ambiente de Panama. The authors thank Shane Campbell-Staton, Kristi
368 Fenstermacher, Hannah Frank, Martha Muñoz, Stephane Montuelle, Paul
369 VanMiddlesworth, and Katharina Wollenberg for help in the field. For access to
370 specimens, we thank Jose Rosado, Luke Mahler (MCZ, Harvard University), Steve Poe,
371 and Tom Giermakowski (MSB, University of New Mexico). Greta Binford provided
372 feedback on a previous draft. We thank four anonymous reviewers. Use of animals in
373 this study was approved by Lewis & Clark College IACUC (ACUP-2008-001). This
374 research was funded by Sigma Xi (G200803150489 to KEC), Lewis & Clark College
375 SAAB (to KEC), and the National Science Foundation (NSF-NIRT 0304730, NSF-IOS-
376 0847953, NSF_NBM-0900723 and Special Creativity Award to KA; NSF DEB-0444763
377 to JBL).

1
2
3
4
5
6
7
8
9
10
11
12
13
14
15
16
17
18
19
20
21
22
23
24
25
26
27
28
29
30
31
32
33
34
35
36
37
38
39
40
41
42
43
44
45
46
47
48
49
50
51
52
53
54
55
56
57
58
59
60
61
62
63
64
65

407
408
409
410
411
412
413
414
415
416
417
418
419
420
421
422
423
424
425
426
427
428
429
430
431
432
433
434
435
436
437
438
439
440
441
442
443
444
445
446
447
448
449
450
451
452

Figures

Figure 1. *Anolis sagrei* hanging on a glass slide by a single toe.

Figure 2. Morphological characteristics determined for each digit. Claw height = length of line A; Claw Length = total length of segments C+D; Claw tip angle = Θ , Claw curvature = $57.296 * (2 * \arcsine(((2 * C^2 * D^2) + (2 * B^2 * D^2) + (2 * B^2 * C^2) \pm B^4 \pm C^4 \pm D^4)^{0.5} / (2 * C * D)))$ (modified from Zani, 2000)

Figure 3. Phylogenetic relationships of the 12 species in this study, modified from Nicholson et al. (2005). Branch lengths do not reflect distance.

Figure 4. Independent contrasts showing how toepad force production is correlated with claw height (A) and claw length (B), suggesting that both features have co-evolved in mainland *Anolis* lizards.

Figure 5. Independent contrasts showing that toepad force production is correlated with perch height in mainland *Anolis* lizards, illustrating that both traits have coevolved.

Figure 6. Claw morphological characters for species classified as arboreal (average perch height > 1 meter) and non-arboreal (average perch height < 1 meter). Claw curvature (a) and tip angle (b) are not statistically significantly different, but claw height (c) and length (d) are significantly different between groups.

Table 1. Morphological and performance characters measured for each species. All measurements were taken from the fourth (longest) digit of the right hind foot. Morphological measurements reflect museum specimens (supplement 1), and performance measures were taken from wild-caught individuals.

1
2
3
4
5
6
7
8
9
10
11
12
13
14
15
16
17
18
19
20
21
22
23
24
25
26
27
28
29
30
31
32
33
34
35
36
37
38
39
40
41
42
43
44
45
46
47
48
49
50
51
52
53
54
55
56
57
58
59
60
61
62
63
64
65

453
454

References

455 Arnold, S.J., 1983. Morphology, performance, and fitness. *American Zoologist* 23,
456 347-361.

457 Autumn, K., 2006. Properties, principles, and parameters of the gecko adhesive
458 system, in: Smith, A., Callow, J. (Eds.), *Biological Adhesives*. Springer Verlag,
459 Berlin Heidelberg.

460 Autumn, K., Liang, Y.A., Hsieh, S.T., Zesch, W., Chan, W.P., Kenny, T.W., Fearing, R.,
461 Full, R.J., 2000. Adhesive force of a single gecko foot-hair. *Nature* 405, 681-685.

462 Autumn, K., Sitti, M., Liang, Y.C.A., Peattie, A.M., Hansen, W.R., Sponberg, S., Kenny,
463 T.W., Fearing, R., Israelachvili, J.N., Full, R.J., 2002. Evidence for van der Waals
464 adhesion in gecko setae. *Proceedings of the National Academy of Sciences of the*
465 *United States of America* 99, 12252-12256.

466 Biewener, A.A., 1989. Scaling body support in mammals - limb posture and muscle
467 mechanics. *Science* 245, 45-48.

468 Biewener, A.A., 2003. *Animal Locomotion*. Oxford University Press, Oxford, UK.

469 Cartmill, M., 1974. Pads and claws in arboreal locomotion, in: Jenkins, F.A. (Ed.),
470 *Primate Locomotion*. Academic Press, New York.

471 Castañeda, M., de Queiroz, K., 2013. Phylogeny of the dactyloa clade of *Anolis* lizards:
472 New insights from combining morphological and molecular data. *Bulletin of the*
473 *Museum of Comparative Zoology* 160, 345-398.

474 Chen, B., Gao, H., 2010. An alternative explanation of the effect of humidity in gecko
475 adhesion: Stiffness reduction enhances adhesion on a rough surface.
476 *International Journal of Applied Mechanics* 2, 1-9.

477 Dai, Z.D., Gorb, S.N., Schwarz, U., 2002. Roughness-dependent friction force of the
478 tarsal claw system in the beetle *Pachnoda marginata* (*Coleoptera, Scarabaeidae*).
479 *Journal of Experimental Biology* 205, 2479-2488.

480 Elstrott, J., Irschick, D.J., 2004. Evolutionary correlations among morphology, habitat
481 use and clinging performance in Caribbean *Anolis* lizards. *Biological Journal of*
482 *the Linnean Society* 83, 389-398.

483 Feduccia, A., 1993. Evidence from claw geometry indicating arboreal habits of
484 *Archaeopteryx*. *Science* 259, 790-793.

485 Felsenstein, J., 1985. Phylogenies and the comparative method. *American Naturalist*
486 125, 1-15.

487 Grafen, A., 1989. The phylogenetic regression. *Philosophical Transactions of the*
488 *Royal Society of London Series B-Biological Sciences* 326, 119-157.

489 Harmon, L.J., Weir, J.T., Brock, C.D., Glor, R.E., Challenger, W., 2008. GEIGER:
490 investigating evolutionary radiations. *Bioinformatics* 24, 129-131.

491 Irschick, D.J., Austin, C.C., Petren, K., Fisher, R.N., Losos, J.B., Ellers, O., 1996. A
492 comparative analysis of clinging ability among pad-bearing lizards. *Biological*
493 *Journal of the Linnean Society* 59, 21-35.

494 Irschick, D.J., Vitt, L.J., Zani, P.A., Losos, J.B., 1997. A comparison of evolutionary
495 radiations in mainland and Caribbean *Anolis* lizards. *Ecology* 78, 2191-2203.

1
2
3
4
5
6
7
8
9
10
11
12
13
14
15
16
17
18
19
20
21
22
23
24
25
26
27
28
29
30
31
32
33
34
35
36
37
38
39
40
41
42
43
44
45
46
47
48
49
50
51
52
53
54
55
56
57
58
59
60
61
62
63
64
65

496 Liang, Y., Autumn, K., Hsieh, S., Zesch, W., Chan, W., Fearing, R., Full, R., Kenny, T.,
497 2000. Adhesion force measurements on single gecko setae. Technical Digest of
498 the 2000 Solid-State Sensor and Actuator Workshop, 33-38.

499 Losos, J.B., 2009. Lizards in an Evolutionary Tree: ecology and adaptive radiation of
500 anoles. University of California Press, Berkeley, CA.

501 Macrini, T.E., Irschick, D.J., Losos, J.B., 2003. Ecomorphological differences in toepad
502 characteristics between mainland and island anoles. *Journal of Herpetology* 37,
503 52-58.

504 Maddin, H.C., Reisz, R.R., 2007. Histological microstructure of the claw of the African
505 clawed frog, *Xenopus laevis* (Anura : Pipidae). *Journal of Morphology* 268, 1101-
506 1101.

507 Mahendra, B.C., 1941. Contributions to the bionomics, anatomy, reproduction and
508 development of the Indian house gecko *Hemidactylus faviviridis*. Ruppel Part !!.
509 The problem of locomotion. *Proc. Indian Acad. Sci. Sect. B* 13, 288-306.

510 Nicholson, K.E., Glor, R.E., Kolbe, J.J., Larson, A., Hedges, S.B., Losos, J.B., 2005.
511 Mainland colonization by island lizards. *Journal of Biogeography* 32, 929-938.

512 Niewiarowski, P.H., Lopez, S., Ge, L., Hagan, E., Dhinojwala, A., 2008. Sticky gecko
513 feet: The role of temperature and humidity. *Plos One* 3.

514 Persson, B.N.J., Gorb, S., 2003. The effect of surface roughness on the adhesion of
515 elastic plates with application to biological systems. *Journal of Chemical Physics*
516 119, 11437-11444.

517 Pesika, N.S., Zeng, H.B., Kristiansen, K., Zhao, B.X., Tian, Y., Autumn, K., Israelachvili, J.,
518 2009. Gecko adhesion pad: a smart surface? *Journal of Physics-Condensed*
519 *Matter* 21.

520 Provancher, W.R., Clark, J.E., Geisler, B., Cutkosky, M.R., 2004. Towards penetration-
521 based clawed climbing, 7th International Conference on Climbing and Walking
522 Robots (CLAWAR 2004), Madrid, Spain.

523 Prowse, M.S., Wilkinson, M., Puthoff, J.B., Mayer, G., Autumn, K., 2011. Effects of
524 humidity on the mechanical properties of gecko setae. *Acta Biomaterialia* 7, 733-
525 738.

526 Puthoff, J.B., Prowse, M.S., Wilkinson, M., Autumn, K., 2010. Changes in materials
527 properties explain the effects of humidity on gecko adhesion. *Journal of*
528 *Experimental Biology* 213, 3699-3704.

529 Russell, A., Johnson, M., 2013. Between a rock and a soft place: microtopograph of
530 the locomotor substrate and the morphology of the setal fields of Namibian day
531 geckos (Gekkota: Gekkonidae: *Rhoptropus*). *Acta Zoologica*.

532 Schaad, E.W., Poe, S., 2010. Patterns of ecomorphological convergence among
533 mainland and island *Anolis* lizards. *Biological Journal of the Linnean Society* 101,
534 852-859.

535 Stark, A.Y., Sullivan, T.W., Niewiarowski, P.H., 2012. The effect of surface water and
536 wetting on gecko adhesion. *Journal of Experimental Biology* 215, 3080-3086.

537 Tulli, M.J., Cruz, F.B., Herrel, A., Vanhooydonck, B., Abdala, V., 2009. The interplay
538 between claw morphology and microhabitat use in neotropical iguanian lizards.
539 *Zoology* 112, 379-392.

1
2
3
4
5
6
7
8
9
10
11
12
13
14
15
16
17
18
19
20
21
22
23
24
25
26
27
28
29
30
31
32
33
34
35
36
37
38
39
40
41
42
43
44
45
46
47
48
49
50
51
52
53
54
55
56
57
58
59
60
61
62
63
64
65

540 Vanhooydonck, B., Andronescu, A., Herrel, A., Irschick, D.J., 2005. Effects of substrate
541 structure on speed and acceleration capacity in climbing geckos. *Biological*
542 *Journal of the Linnean Society* 85, 385-393.

543 Velasco, J.A., Herrel, A., 2007. Ecomorphology of *Anolis* lizards of the Choco' region in
544 Colombia and comparisons with Greater Antillean ecomorphs. *Biological Journal*
545 *of the Linnean Society* 92, 29-39.

546 Warheit, K.I., Forman, J.D., Losos, J.B., Miles, D.B., 1999. Morphological diversification
547 and adaptive radiation: A comparison of two diverse lizard clades. *Evolution* 53,
548 1226-1234.

549 Williams, E.E., 1983. Ecomorphs, faunas, island size, and diverse end points in island
550 radiations of *Anolis*. , in: Huey, R.B., Pianka, E.R., Schoener, T.W. (Eds.), *Lizard*
551 *ecology: Studies of a model organism*. Harvard University Press, Cambridge, MA,
552 pp. 132-151.

553 Wollenberg, K.C., Wang, I.J., Glor, R.E., Losos, J.B., 2013. Determinism in the
554 diversification of hispaniolan trunk ground anoles (*Anolis cybotes* species
555 complex). *Evolution*.

556 Zani, P.A., 2000. The comparative evolution of lizard claw and toe morphology and
557 clinging performance. *Journal of Evolutionary Biology* 13, 316-325.

558
559
560

1
2
3
4
5
6
7
8
9
10
11
12
13
14
15
16
17
18
19
20
21
22
23
24
25
26
27
28
29
30
31
32
33
34
35
36
37
38
39
40
41
42
43
44
45
46
47
48
49

Species	n (morphology)	n (performance)	SVL (mm)	Mass (g)	Claw height (mm)	Claw Length (mm)	Claw Curvature (degrees)	Claw Tip Angle (degrees)	Toepad Area (mm ²)	Lamellae Number	Toepad Force (N)
<i>Anolis auratus</i>	11	6	42.66	1.35	0.32 ± 0.01	0.52 ± 0.03	40.13 ± 1.57	36.34 ± 2.99	1.06 ± 0.07	10 ± 0.23	0.0084 ± 0.00081
<i>Anolis biporcatus</i>	13	3	83.18	12.88	0.79 ± 0.02	1.10 ± 0.04	32.5 ± 0.39	34.39 ± 0.91	7.23 ± 0.34	18.7 ± .3	0.012 ± 0.022
<i>Anolis capito</i>	6	2	75.86	11.22	0.70 ± 0.05	0.90 ± 0.25	35.41 ± 0.91	29.06 ± 2.14	3.60 ± 0.39	12.3 ± 0.33	0.051 ± 0.021
<i>Anolis cupreus</i>	5	4	42.66	1.62	0.32 ± 0.02	0.35 ± 0.10	36.14 ± 1.33	31.60 ± 1.37	1.20 ± 0.23	9.0 ± 0.41	0.019 ± 0.0016
<i>Anolis frenatus</i>	7	9	93.33	17.38	1.14 ± 0.04	1.69 ± 0.1	33.07 ± 0.86	34.28 ± 0.98	18.60 ± 1.90	23.38 ± 1.07	0.15 ± 0.012
<i>Anolis humilis</i>	5	5	31.62	0.91	0.34 ± 0.05	0.52 ± 0.08	34.67 ± 1.03	28.57 ± 1.13	1.32 ± 0.26	10.8 ± 1.11	0.011 ± 0.0011
<i>Anolis lemurinus</i>	5	1	51.29	2.95	0.40 ± 0.01	0.50 ± 0.13	34.24 ± 0.80	35.52 ± 1.07	3.04 ± 0.27	14.0 ± 0.41	0.034 ± 0.0013
<i>Anolis limifrons</i>	7	5	38.02	0.95	0.31 ± 0.02	0.42 ± 0.03	34.07 ± 0.85	29.13 ± 1.64	1.53 ± 0.15	11.0 ± 0.49	0.0073 ± 0.0015
<i>Anolis lionotus</i>	10	7	64.57	5.50	0.46 ± 0.05	0.73 ± 0.11	35.47 ± 0.54	29.50 ± 1.35	3.44 ± 0.52	14 ± 0.24	0.020 ± 0.0013
<i>Anolis pentaprion</i>	9	2	48.98	2.45	0.43 ± 0.03	0.51 ± 0.03	32.91 ± 0.94	36.76 ± 1.27	2.83 ± 0.24	16.9 ± 0.28	0.092 ± 0.012
<i>Anolis poecilopus</i>	6	9	61.66	5.01	0.51 ± 0.05	0.83 ± 0.09	35.67 ± 0.09	29.27 ± 0.66	4.20 ± 0.90	14.4 ± 0.68	0.032 ± 0.0014
<i>Anolis polylepis</i>	6	4	44.67	1.74	0.38 ± 0.02	0.34 ± 0.14	33.31 ± 1.59	31.89 ± 1.19	1.81 ± 0.11	11.8 ± 0.20	0.017 ± 0.0016

Table 1

Species	n (morphology)	n (performance)	SVL (mm)	Mass (g)	Claw height (mm)	Claw Length (mm)
<i>Anolis auratus</i>	11	6	42.66	1.35	0.32 ± 0.01	0.52 ± 0.03
<i>Anolis biporcatus</i>	13	3	83.18	12.88	0.79 ± 0.02	1.1 ± 0.04
<i>Anolis capito</i>	6	2	75.86	11.22	0.70 ± 0.05	0.90 ± 0.25
<i>Anolis cupreus</i>	5	4	42.66	1.62	0.32 ± 0.02	0.35 ± 0.10
<i>Anolis frenatus</i>	7	9	93.33	17.38	1.14 ± 0.04	1.69 ± 0.1
<i>Anolis humilis</i>	5	5	31.62	0.91	0.34 ± 0.05	0.52 ± 0.08
<i>Anolis lemurinus</i>	5	1	51.29	2.95	0.40 ± 0.01	0.50 ± 0.13
<i>Anolis limifrons</i>	7	5	38.02	0.95	0.31 ± 0.02	0.42 ± 0.03
<i>Anolis lionotus</i>	10	7	64.57	5.50	0.46 ± 0.05	0.73 ± 0.11
<i>Anolis pentaprion</i>	9	2	48.98	2.45	0.43 ± 0.03	0.51 ± 0.03
<i>Anolis poecilopus</i>	6	9	61.66	5.01	0.51 ± 0.05	0.83 ± 0.09
<i>Anolis polylepis</i>	6	4	44.67	1.74	0.38 ± 0.02	0.34 ± 0.14

Figure01
[Click here to download high resolution image](#)



Figure02

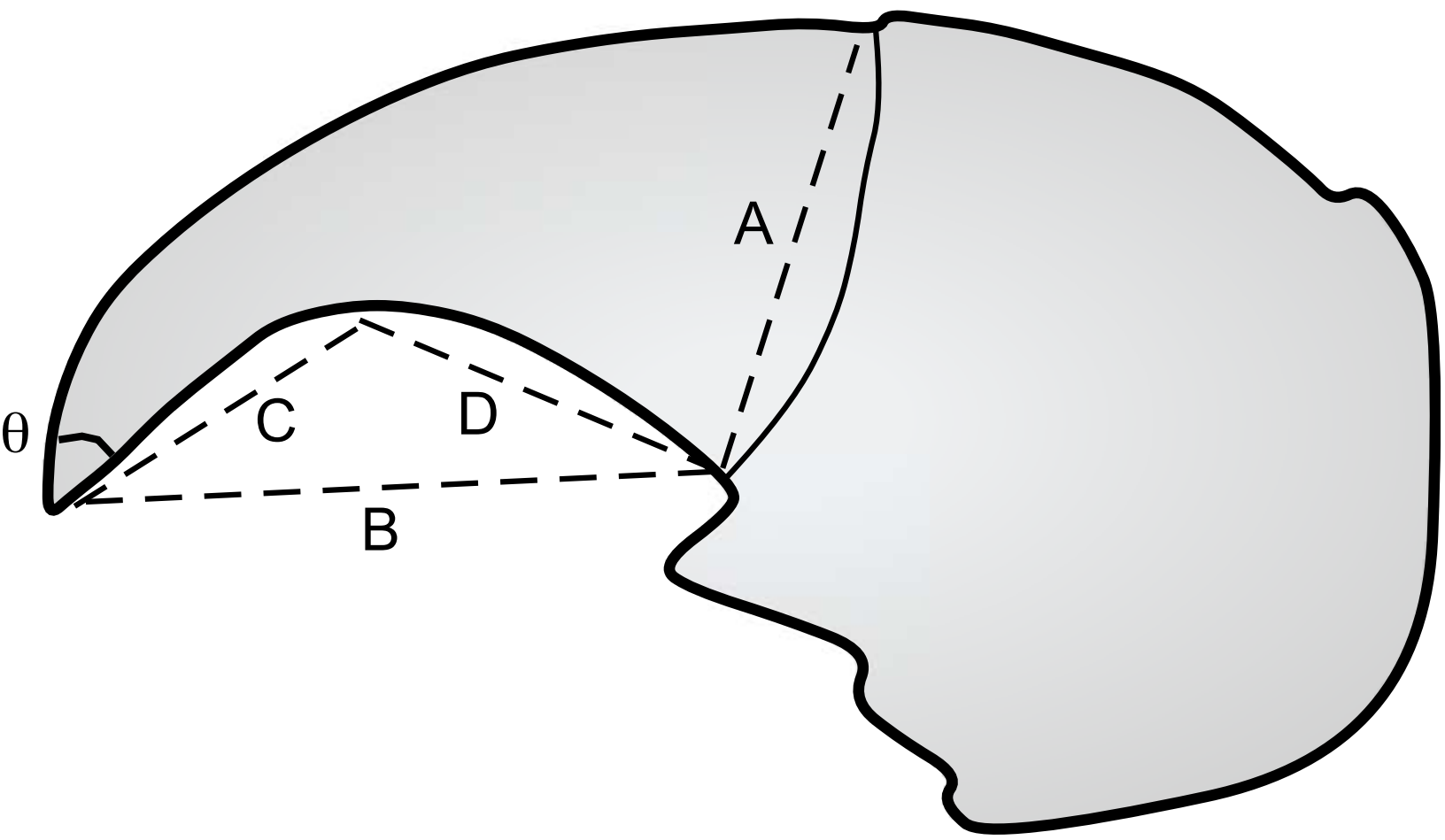
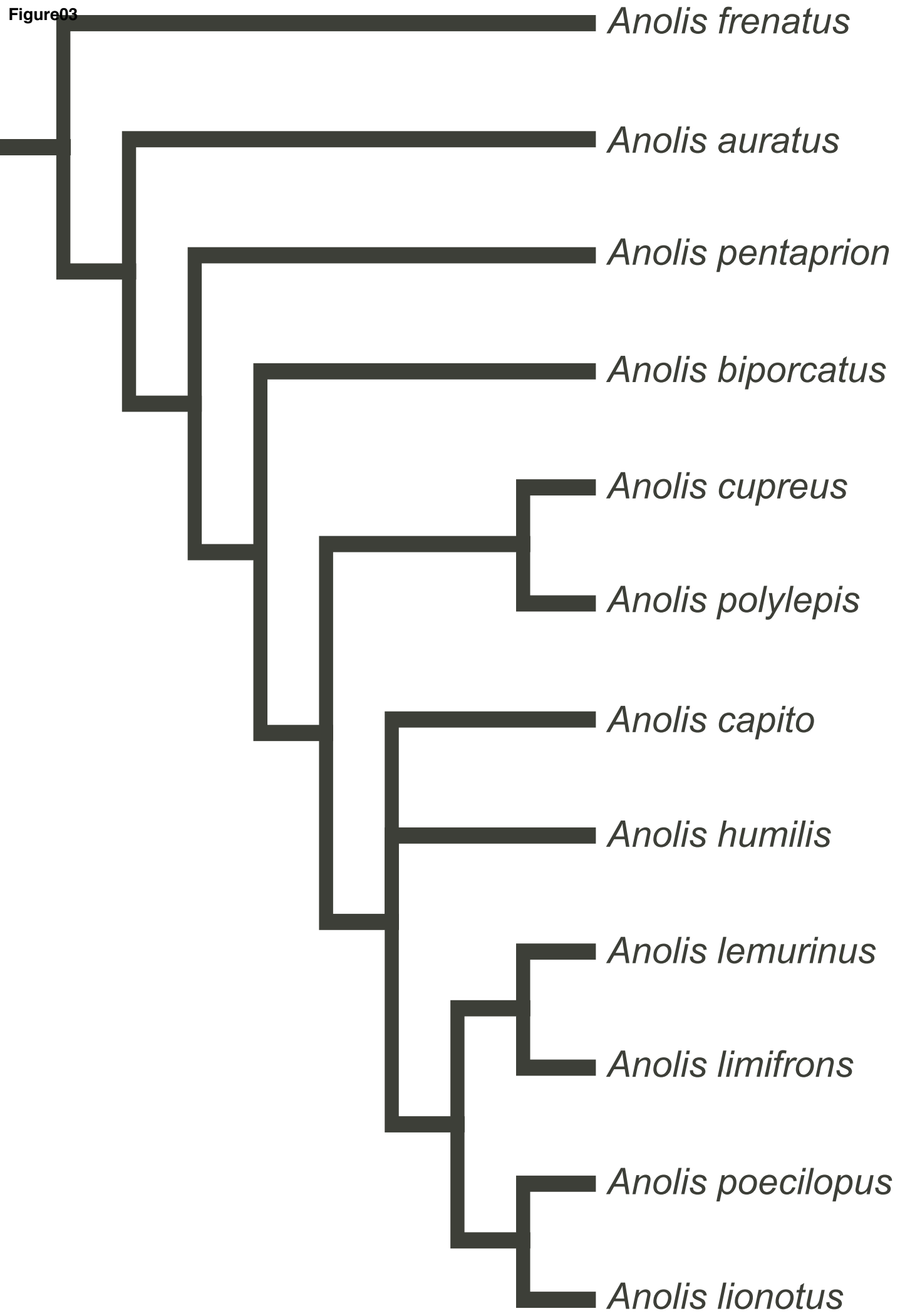


Figure03



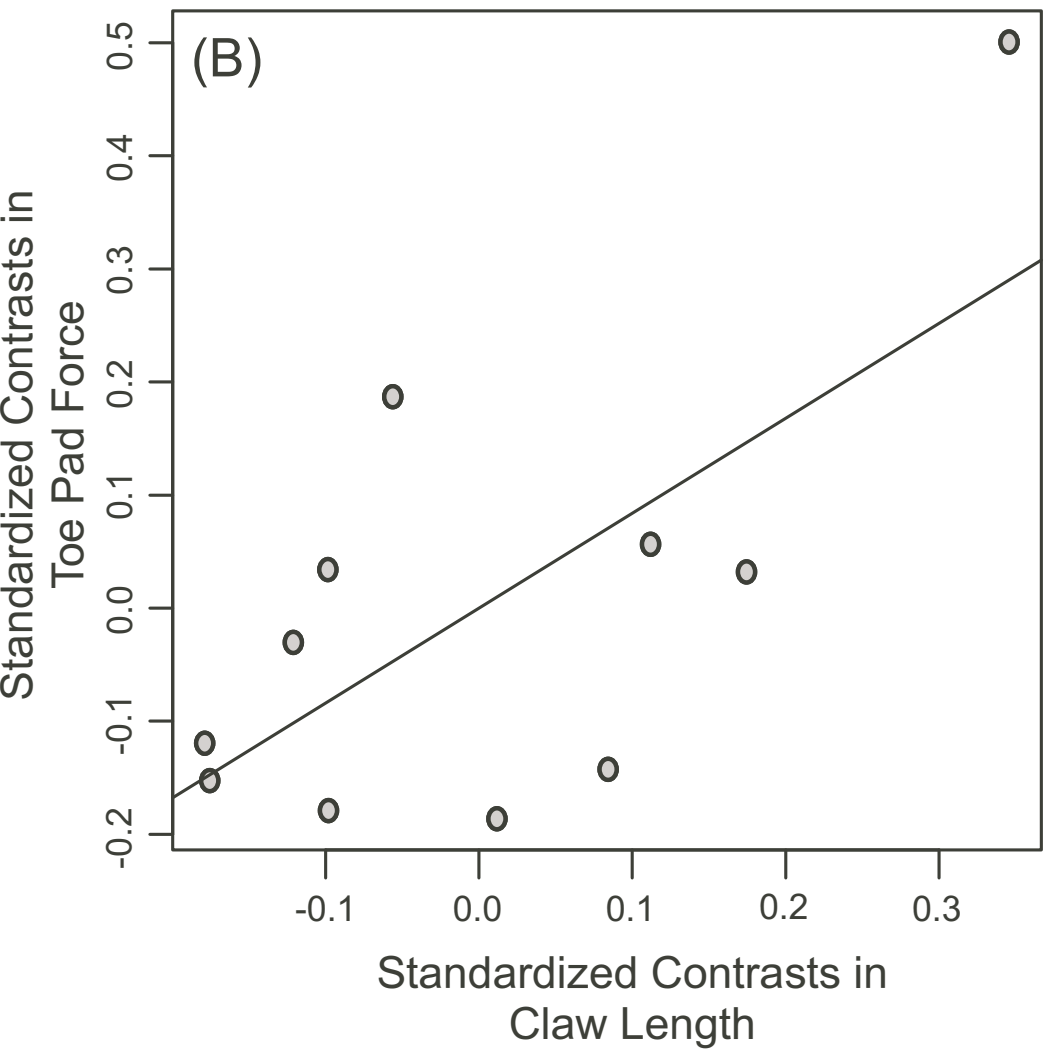
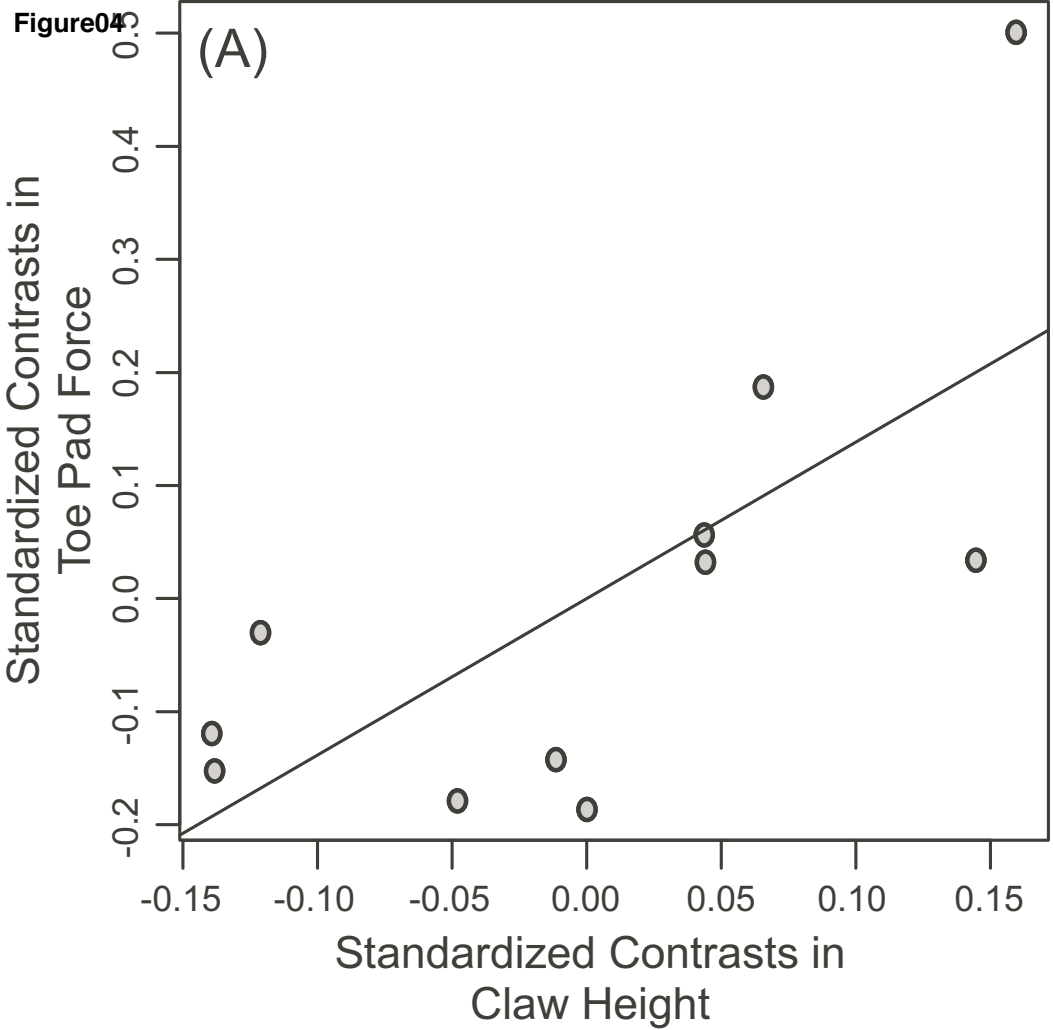


Figure05

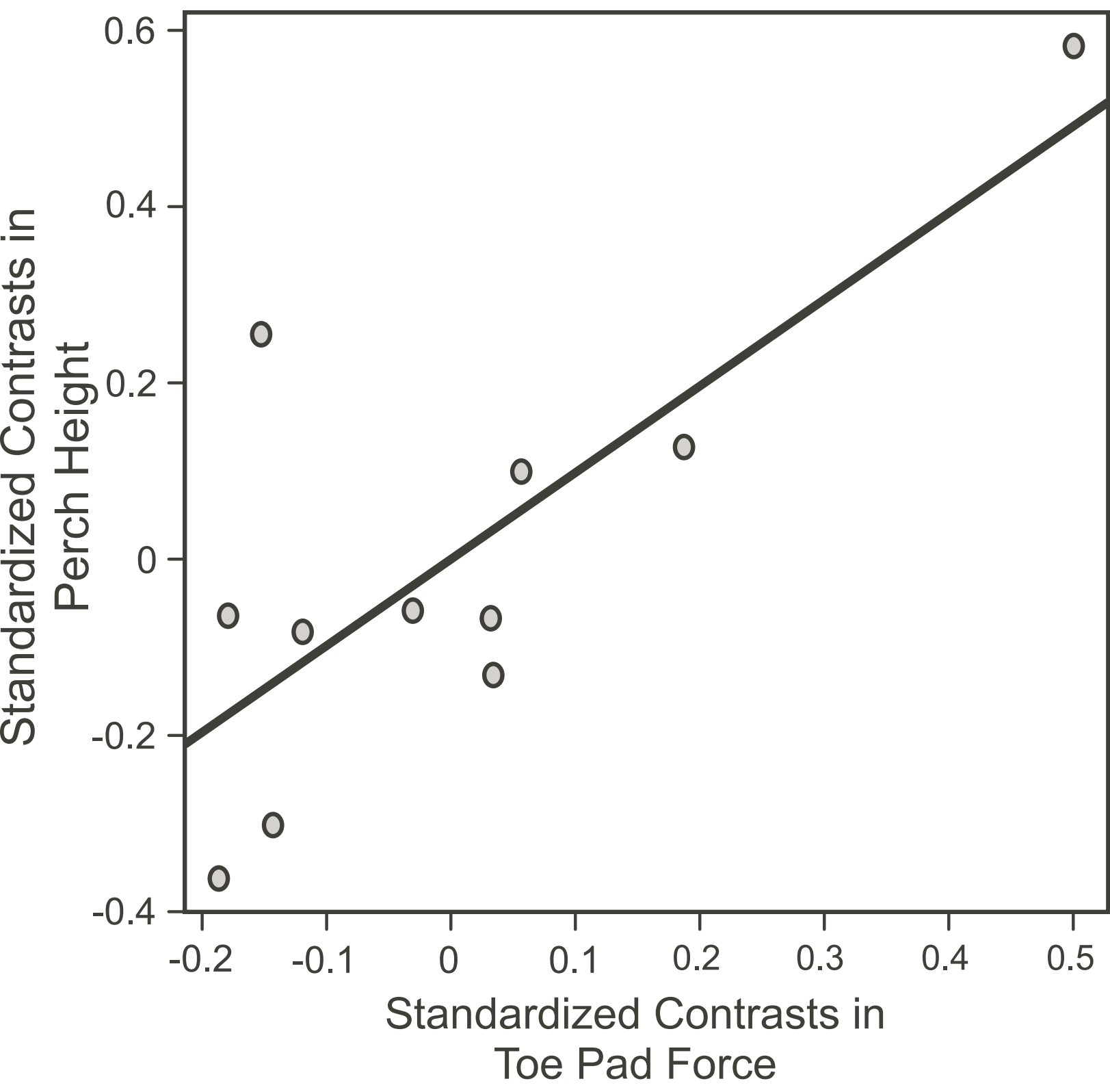
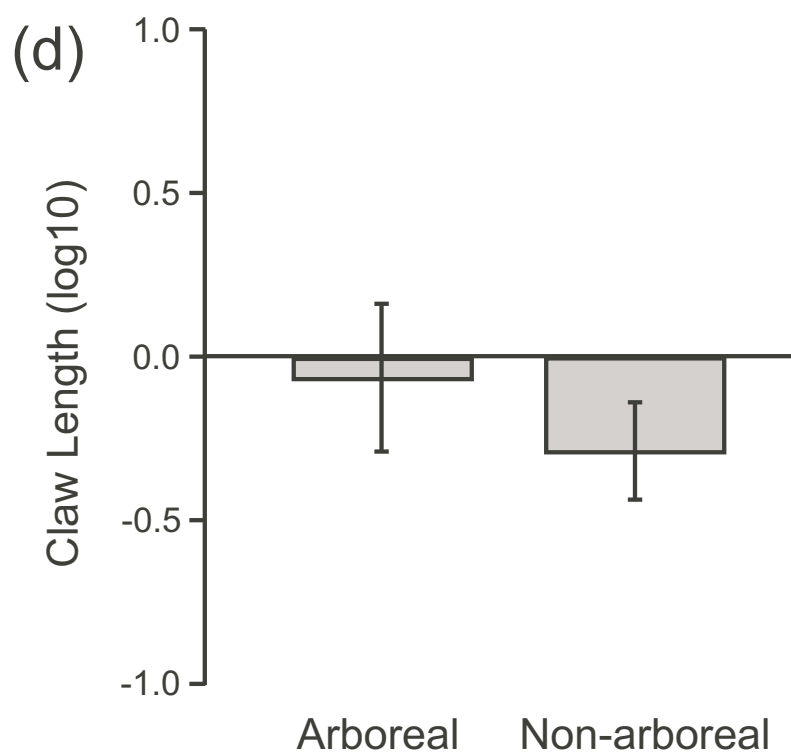
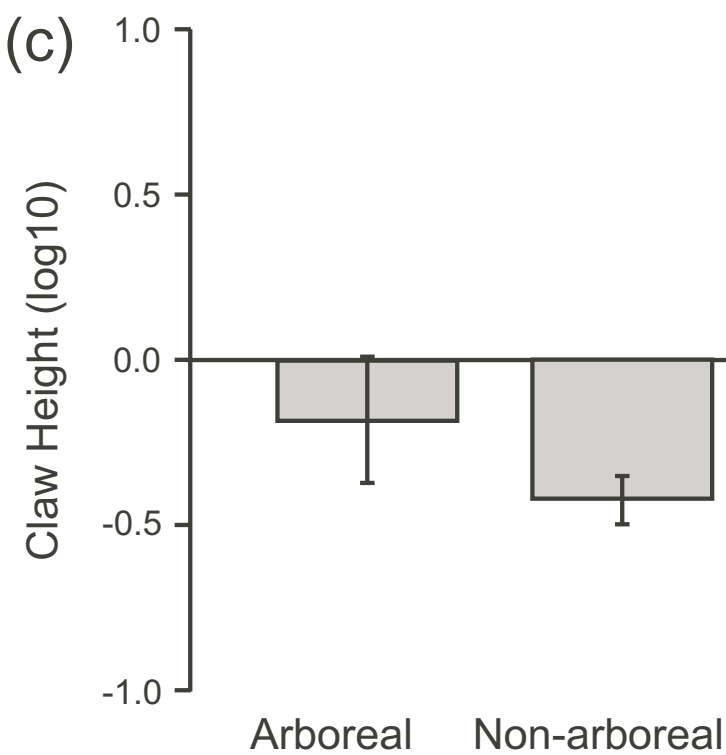
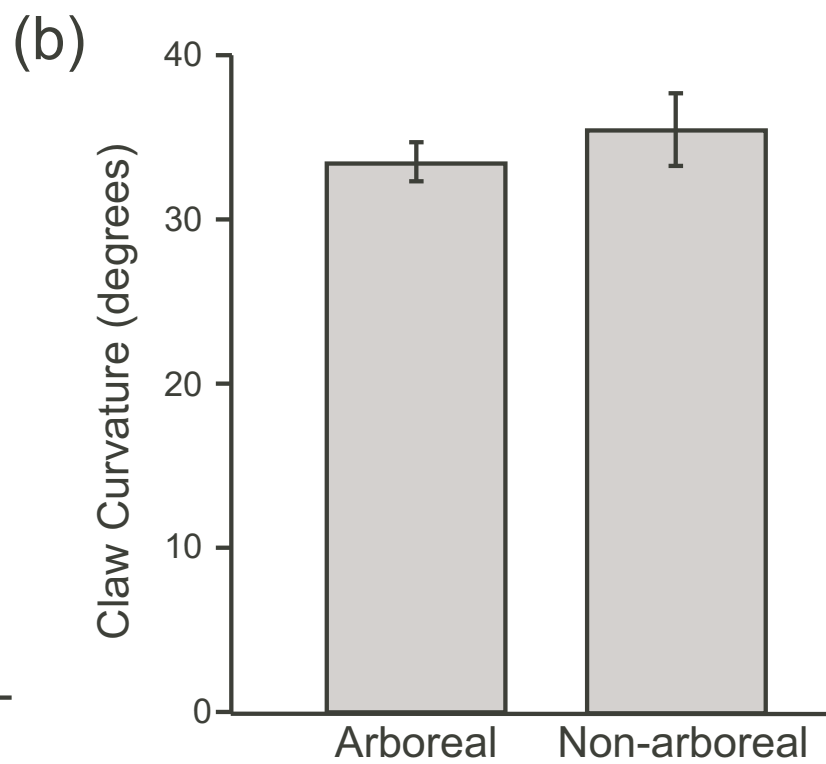
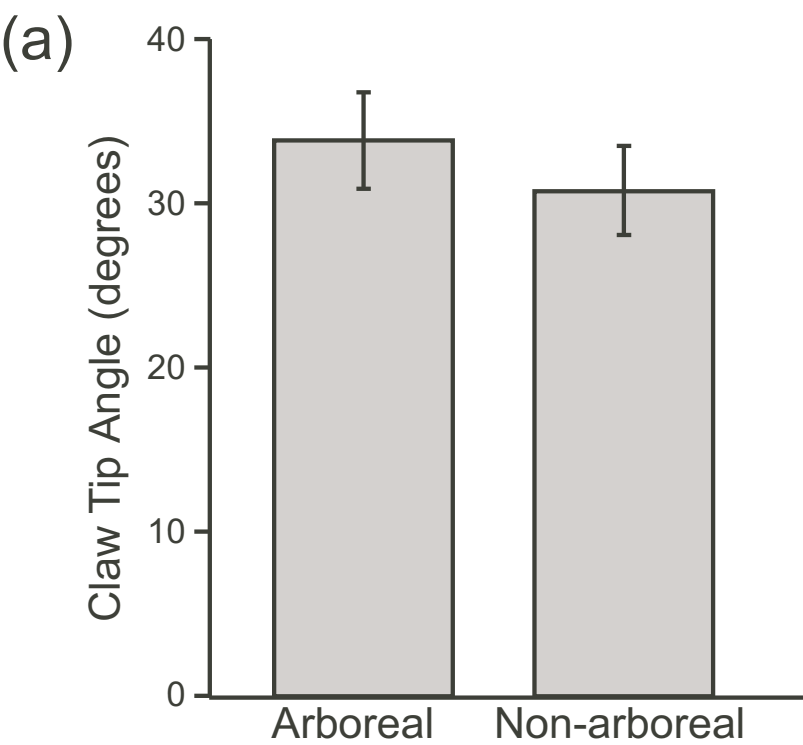


Figure06



e-component

[Click here to download e-component: appendix.xlsx](#)