



Imaging tumour cell heterogeneity following cell transplantation into optically clear immune-deficient zebrafish

Citation

Tang, Q., J. C. Moore, M. S. Ignatius, I. M. Tenente, M. N. Hayes, E. G. Garcia, N. Torres Yordán, et al. 2016. "Imaging tumour cell heterogeneity following cell transplantation into optically clear immune-deficient zebrafish." Nature Communications 7 (1): 10358. doi:10.1038/ncomms10358. <http://dx.doi.org/10.1038/ncomms10358>.

Published Version

doi:10.1038/ncomms10358

Permanent link

<http://nrs.harvard.edu/urn-3:HUL.InstRepos:26318695>

Terms of Use

This article was downloaded from Harvard University's DASH repository, and is made available under the terms and conditions applicable to Other Posted Material, as set forth at <http://nrs.harvard.edu/urn-3:HUL.InstRepos:dash.current.terms-of-use#LAA>

Share Your Story

The Harvard community has made this article openly available.
Please share how this access benefits you. [Submit a story](#).

[Accessibility](#)

ARTICLE

Received 20 Apr 2015 | Accepted 2 Dec 2015 | Published 21 Jan 2016

DOI: 10.1038/ncomms10358

OPEN

Imaging tumour cell heterogeneity following cell transplantation into optically clear immune-deficient zebrafish

Qin Tang^{1,2}, John C. Moore^{1,2}, Myron S. Ignatius^{1,2}, Inês M. Tenente^{1,2,3}, Madeline N. Hayes^{1,2}, Elaine G. Garcia^{1,2}, Nora Torres Yordán^{1,2}, Caitlin Bourque^{4,5}, Shuning He^{2,6}, Jessica S. Blackburn^{1,2,7}, A. Thomas Look^{2,6}, Yariv Houvras^{4,5} & David M. Langenau^{1,2}

Cancers contain a wide diversity of cell types that are defined by differentiation states, genetic mutations and altered epigenetic programmes that impart functional diversity to individual cells. Elevated tumour cell heterogeneity is linked with progression, therapy resistance and relapse. Yet, imaging of tumour cell heterogeneity and the hallmarks of cancer has been a technical and biological challenge. Here we develop optically clear immune-compromised *rag2^{E450fs}* (*casper*) zebrafish for optimized cell transplantation and direct visualization of fluorescently labelled cancer cells at single-cell resolution. Tumour engraftment permits dynamic imaging of neovascularization, niche partitioning of tumour-propagating cells in embryonal rhabdomyosarcoma, emergence of clonal dominance in T-cell acute lymphoblastic leukaemia and tumour evolution resulting in elevated growth and metastasis in *BRAF^{V600E}*-driven melanoma. Cell transplantation approaches using optically clear immune-compromised zebrafish provide unique opportunities to uncover biology underlying cancer and to dynamically visualize cancer processes at single-cell resolution *in vivo*.

¹ Molecular Pathology, Cancer Center, and Regenerative Medicine, Massachusetts General Hospital, Boston, Massachusetts 02129, USA. ² Harvard Stem Cell Institute, Harvard University, Cambridge, Massachusetts 02139, USA. ³ Abel Salazar Biomedical Sciences Institute, University of Porto, Porto 4099-003, Portugal. ⁴ Department of Surgery, Weill Cornell Medical College, New York, New York 10065, USA. ⁵ Department of Medicine, Weill Cornell Medical College, New York, New York 10065, USA. ⁶ Pediatric Oncology, Dana-Farber Cancer Institute, Boston, Massachusetts 02115, USA. ⁷ Department of Molecular and Cellular Biochemistry, University of Kentucky, Lexington, Kentucky 40506, USA. Correspondence and requests for materials should be addressed to D.L. (email: dlangenau@mgh.harvard.edu).

The conversion of phenotypically normal cells into malignant cells is often associated with acquired ‘hallmarks of cancer’ including elevated growth potential, suppression of cell death pathways, development of new vascular networks to feed the growing tumour and acquired cell motility that lead to invasion and metastasis^{1,2}. Despite our increased understanding that cancer is driven by molecular changes that convert normal cells into malignant cells, it has become well recognized that not all cancer cells are created equal. For example, the process of clonal evolution that is responsible for initiating cancer is also a critical driver of intra-tumoral heterogeneity that is constantly arising throughout the lifespan of a cancer cell³. This heterogeneity provides a rich diversity of cell types and mutations on which natural selection can act, ultimately leading to a subset of cancers that elevate metastatic potential and therapy resistance^{4–6}. Despite our new found ability to genetically map individual mutations that are acquired during tumour cell evolution and progression^{7–9}, it is been difficult to directly visualize how these mutations affect tumour growth in live animals. Access to optically clear animal models would permit the dynamic visualization of the cancer hallmarks and provide unprecedented access to dissect the molecular underpinnings of cancer progression at single-cell resolution.

Over the past two decades, the field of cancer research has been empowered by intra-vital imaging (IVM) in mouse models^{10,11}. Refined imaging tools, including confocal, multi-photon and light sheet microscopy, have now been applied to a wide range of cancers to facilitate the discovery of underlying mechanisms that drive cancer growth *in vivo*. For example, Kedrin *et al.* have utilized photoactivatable fluorescent proteins and cell lineage tracing to visualize the tumour cell niche in mammary carcinoma. These studies uncovered that cells adjacent to the vasculature drive invasion and metastasis¹². Using similar approaches, Calabrese *et al.* discovered that Nestin+ brain tumour stem cells reside in a perivascular niche¹³. Metastasis has also been observed using IVM. For example, a single extravasated C26 colorectal cancer cell has been shown to proliferate and to produce highly mobile pre-metastatic lesions in the liver¹⁴. Sophisticated fluorescent labelling techniques, including cell lineage tracing using Confetti and brainbow constructs^{15,16}, have now been successfully integrated with high-resolution microscopy to visually dissect intra-tumoral heterogeneity. For example, Zomer *et al.* utilized the Confetti strategy to label individual mammary tumour cells, and performed proof-of-concept experiments to show that tumour stem cells can become alternatively active or quiescent during tumour development¹⁷. Despite these successes, challenges presented by the opacity of furred rodents, and the requirement for invasive surgical implantation of imaging windows have limited the application of IVM. Furthermore, requirements of imaging through pre-defined windows often prohibit simultaneous observation of tumour cells from the primary and metastatic sites within the same animal.

Zebrafish have been developed as a robust model of human cancer and have now been widely used for visualizing cancer processes in live animals. For example, our group has used fluorescent transgenic approaches to label embryonal rhabdomyosarcoma (ERMS) cells based on differentiation status. Using these approaches, we have been able to dynamically visualize tumour cell heterogeneity *in vivo*, identifying the existence of a molecularly defined tumour-propagating cell (TPC) that expresses myf5-GFP and other differentiated cell types that express myogenin and drive invasion¹⁸. Others have utilized cell transplantation into irradiated, optically clear *casper* strain adult zebrafish to visualize melanoma invasion¹⁹, and conversion of T-lymphoblastic lymphoma into leukaemia²⁰. Importantly,

these initial successes utilized cell transplantation into either syngeneic strains of zebrafish or irradiated recipient animals that only transiently dampen immune responses. Using genome-editing approaches²¹, our group has recently developed homozygous *rag2*^{E450fs} zebrafish. These fish are viable as adults, have deficiencies in T and B cells, and enable robust engraftment of fluorescently labelled zebrafish tumour cells from a wide range of cancers and strains of zebrafish²². Despite the utility of the *rag2*^{E450fs} model for cell engraftment studies, the *rag2*^{E450fs} mutation was created on the pigmented AB-strain and thus it has been difficult to image tumour cells at single-cell resolution in engrafted animals.

Here we create transparent *casper* strain, *rag2*^{E450fs} mutant zebrafish and utilize these animals for transplantation studies to image heterogeneity and various ‘hallmarks of cancer’. For example, confocal imaging permits the dynamic visualization of TPCs in ERMS and the emergence of clonal dominance in T-cell acute lymphoblastic leukaemia (T-ALL). Serial imaging studies also detail the evolution of metastasis in a subset of *BRAF*^{V600E}-driven melanomas and facilitate the direct visualization of micro-metastatic disease. Our work provides a universal transplantation model for imaging cancer cell processes, opening new avenues for visualizing the functional consequences of cancer cell heterogeneity and clonal evolution at single-cell resolution in the zebrafish.

Results

Engraftment of allogeneic tumours. We have previously reported the production of lymphocyte-deficient *rag2*^{E450fs} mutant zebrafish that engraft a wide variety of normal and malignant zebrafish cells²² (ZFIN allele *rag2*^{tb101}). However, these initial studies utilized pigmented, AB-strain zebrafish, making it difficult to directly visualize tumour cells at high resolution *in vivo*. To facilitate imaging of cancer in live zebrafish, the *rag2*^{E450fs} mutation was bred into the *casper* background—a transparent zebrafish that lacks melanocytes and iridophores¹⁹. As expected, *rag2*^{E450fs} (*casper*) zebrafish efficiently engrafted fluorescently labelled T-ALL²³, neuroblastoma²⁴, ERMS^{18,25} and melanoma^{26,27} (Fig. 1, Supplementary Fig. 1 and Supplementary Table 1). Tumours derived from *CG1*, AB and *nacre* strain zebrafish engrafted efficiently into *rag2*^{E450fs} (*casper*) zebrafish and did not require matching at the major histocompatibility complex or pre-conditioning with γ -irradiation. Importantly, engrafted tumours exhibited similar histology as donor tumours (Fig. 1). As has been reported previously for AB-strain wild-type transplant recipients²², tumours failed to engraft into unconditioned *casper*-strain animals that have an intact *rag2* locus (Supplementary Table 1 and Supplementary Fig. 1).

Visualizing the dynamics of tumour neovascularization.

Neovascularization is an important hallmark of cancer and has been imaged in a variety of cancers^{18,28,29}. To assess the utility of adult *rag2*^{E450fs} (*casper*) fish for imaging neovascularization in the transplantation setting, green fluorescent protein (GFP)-labelled *BRAF*^{V600E}, *tp53*^{-/-} amelanotic melanoma²⁷ cells were implanted into the dorsal musculature of 3-month-old *rag2*^{E450fs} (*casper*) fish (5×10^5 cells in 2 μ l per animal). Because engraftment was initially limited to the dorsal musculature, melanomas developed adjacent to the skin epidermis. Neovascularization could be directly visualized by confocal microscopy following injection of crimson quantum dots³⁰ into the blood stream at 25 days post transplantation (d.p.t.; Fig. 2a, $n = 8$ animals). Crimson quantum dots were chosen because they excite in far-red wavelengths and can be easily differentiated from

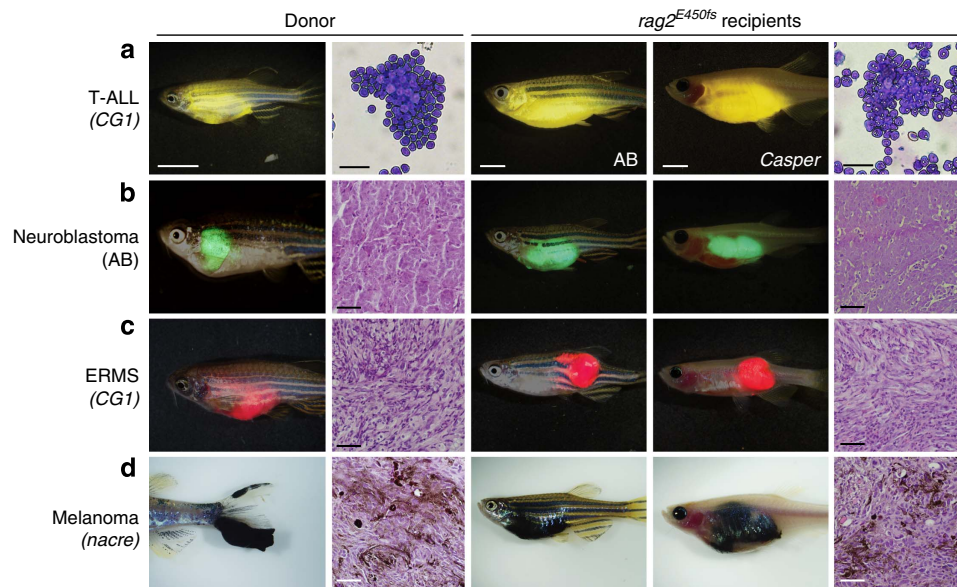


Figure 1 | Zebrafish cancers engraft into homozygous $rag2^{E450fs}$ (*casper*) animals. Donor animals shown in the left two panels while transplant recipients are to the right. **(a)** ZsYellow-labelled Myc-driven T-ALL from the syngeneic CG1 background, **(b)** EGFP-labelled neuroblastoma from AB background, **(c)** mCherry-labelled $kRAS^{G12D}$ -driven ERMS from CG1 background, and **(d)** $BRAF^{V600E}$ -induced melanoma arising in $tp53^{-/-}$ *nacre* background. Tumour cells were transplanted intra-peritoneally (**a,b,d**) or intra-muscularly (**c**) into both $rag2^{E450fs}$ (AB) and $rag2^{E450fs}$ (*casper*)-recipient fish. Merged brightfield and fluorescent images are shown at 30 d.p.t. Cytopsin of leukaemia cells are shown in **a**, whereas haematoxylin and eosin (H&E)-stained sections are shown in **b-d**. Scale bars equal 5 mm in whole animals images, 20 μ m for cytopsin shown in **a**, and 50 μ m for histology sections shown in **b-d**.

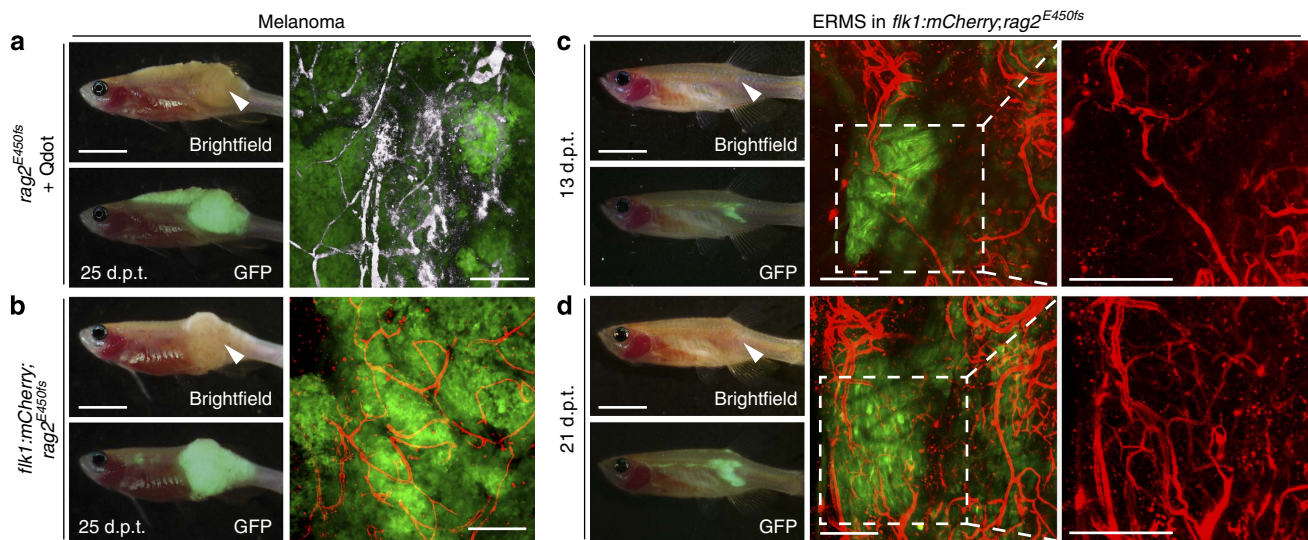


Figure 2 | Imaging neovascularization in $rag2^{E450fs}$ (*casper*) zebrafish engrafted with fluorescently labelled melanoma and ERMS. **(a)** GFP-labelled, amelanotic melanoma implanted into $rag2^{E450fs}$ (*casper*) fish ($n = 8$ animals) and imaged following intravascular injection of crimson quantum dots (Qtracker 655). Whole animal images to the left and confocal images to the right ($\times 100$ magnification, 100–200 μ m z-stack). Quantum dot fluorescence has been pseudo-coloured white. **(b)** GFP-labelled, amelanotic melanoma implanted into *flk1:mCherry; rag2^{E450fs}* (*casper*) transgenic zebrafish ($n = 4$ animals). **(c-d)** GFP-labelled ERMS engrafted into *flk1:mCherry; rag2^{E450fs}* (*casper*) transgenic zebrafish ($n = 5$ animals) and serially imaged over time (**c**, 13 d.p.t. and **d**, 21 d.p.t.). White arrowheads denote the site of intra-muscular injection of tumour cells. Scale bars equal 5 mm in whole animal images and 200 μ m in confocal images.

other fluorescent proteins used to label tumour cells in this study, including AmCyan, GFP, ZsYellow, DsRED and mCherry. To further refine imaging of neovascularization within solid tumours, we next created *flk1:mCherry; rag2^{E450fs}* (*casper*) fish with fluorescently labelled vasculature. Animals were injected intra-muscularly with GFP-labelled melanoma (5×10^5 cells in 2 μ l per animal). Following successful engraftment at the site of injection,

vessels were readily visualized by confocal microscopy ($\times 100$ magnification, 105.71 μ m = 10 z-stacks, $n = 4$ animals, Fig. 2b). Finally, we have been able to visualize how neovascularization changes over time within the same animal, which results in the creation of dense vascular networks associated with ERMS growth ($\times 100$ magnification, 223.64 μ m = 10 z-stacks, Fig. 2c,d). Together, these experiments demonstrate the ease and utility of

imaging neovascularization in solid tumours using the *rag2^{E450fs}* (*casper*) fish.

Imaging ERMS heterogeneity at single-cell resolution. We next wanted to dynamically visualize tumour cell heterogeneity at single-cell resolution using a transgenic model of *kRAS^{G12D}*-driven ERMS²⁵. We have previously created primary ERMS in triple transgenic *myf5:GFP*; *myogenin-H2b:mRFP*; *mylpfa:lyn-cyan* zebrafish, which enables the labelling of tumour cells based on differentiation status¹⁸. To achieve direct imaging of heterogeneous tumour cell populations in adult zebrafish, we engrafted these fluorescent transgenic ERMS by intra-muscular injection into 3-month-old adult *flk1:mCherry*; *rag2^{E450fs}* (*casper*) strain zebrafish (4×10^5 cells in $2 \mu\text{l}$ per animal, Fig. 3a,b). Confocal microscopic imaging revealed that GFP-labelled TPCs and AmCyan-labelled differentiated cells were largely confined to distinct regions of the tumour ($\times 100$ magnification, Fig. 3c, left panel), consistent with previous reports¹⁸. Remarkably, the vasculature transects areas of regional tumour cell heterogeneity. We have also noted that in this particular case, juxtaposition of specific ERMS cell subtypes near vascular beds was not observed. Higher magnification imaging of areas enriched with differentiated ERMS cells revealed the presence of *myf5-GFP* + TPCs, albeit at reduced numbers when compared with other regions of the tumour ($\times 400$ magnification, Fig. 3c, right panel). Our data suggest that ERMS cells largely reside in regionally defined niches based on differentiation status and are not anatomically confined by proximity to vessels. The combination of fluorescent transgenic labelling of tumour cell subpopulations and subsequent cell transplantation will be important for defining how niche topology is established and ultimately influences continued tumour growth in ERMS and a wide range of cancers.

Detailing emergence of clonal dominance in T-ALL. We next wanted to use our model to dynamically visualize the functional consequences of tumour cell heterogeneity and emergence of clonal dominance in T-ALL. It is well known that human leukaemias and myelomas are oligoclonal at diagnosis; however, relapse is often driven by emergence of an underrepresented clone contained within the primary malignancy^{31–35}. We have previously created Myc-induced T-ALLs that express a variety of fluorescent proteins and then used cell transplantation to create T-ALLs derived from single leukaemia cells³⁶. Using these monoclonal T-ALLs, our experiments sought to dynamically visualize how individual T-ALL clones grow when combined together, testing the hypothesis that inherent functional differences between cells drive the emergence of clonal dominance.

First, we assessed the kinetics of leukaemia regrowth in clones that exhibited wide differences in leukaemia-propagating cell (LPC) frequency and latency. Specifically, we mixed equal numbers of AmCyan, ZsYellow and DsRED-labelled cells isolated from three independent T-ALLs (Supplementary Fig. 2a–c). Following transplantation into the dorsal musculature (3.3×10^4 of each clone, 1.0×10^5 total cells per recipient animal), engrafted fish were imaged by confocal microscopy at 14 and 25 d.p.t. Consistent with our expectations, ZsYellow-labelled T-ALL cells with the highest LPC frequency and fastest growth outcompeted the other clones at each of the time points analysed, making up 48.7% of the leukaemia by 14 d.p.t. and 72.3% by 25 d.p.t. (Supplementary Fig. 2d,e). These data suggest that clonal dominance can result from inherent functional differences between clones.

We next wanted to examine emergence of clonal dominance in T-ALL that had similar LPC frequency and growth kinetics, exploring the notion that clonal dominance may also emerge stochastically *in vivo*. For example, *Lgr5* + intestinal crypt stem cells exhibit a pattern of neutral drift, ultimately resulting in

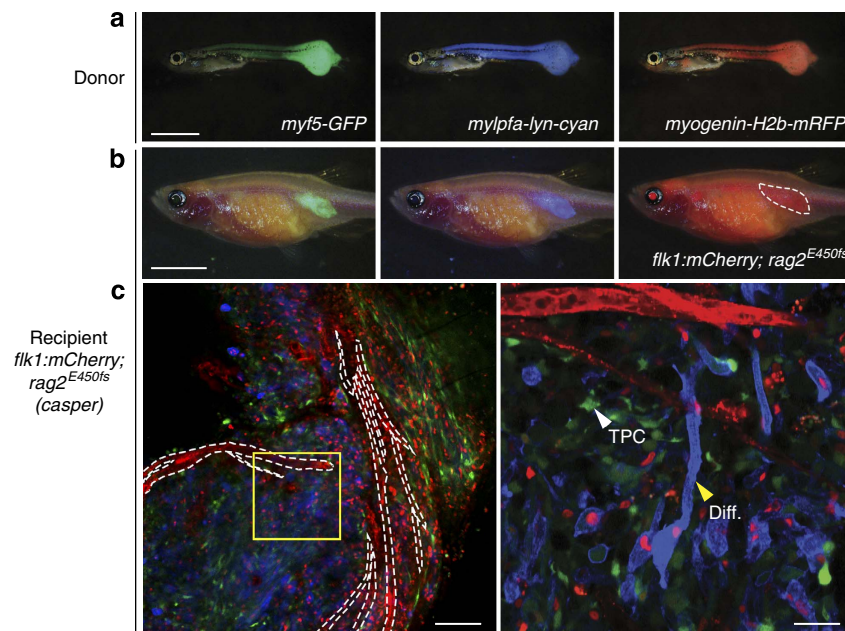


Figure 3 | Resolving tumour cell heterogeneity in ERMS at single-cell resolution following engraftment into *flk1:mCherry*; *rag2^{E450fs}* (*casper*) zebrafish. (a) Epi-fluorescent images of primary ERMS in a 32-day-old *myf5:GFP*; *myogenin-H2b:mRFP*; *mylpfa:lyn-cyan* triple transgenic zebrafish. (b) Epi-fluorescent images of *flk1:mCherry*; *rag2^{E450fs}* (*casper*)-recipient fish engrafted intra-muscularly with fluorescently labelled ERMS at 28 d.p.t. ($n = 4$ animals). (c) Confocal image with mCherry-labelled vasculature outlined by white dashed lines (left, $\times 100$ magnification). Higher magnification of boxed region (right, $\times 400$ magnification). Myosin-expressing, differentiated cells (Diff.) and less frequent *myf5-GFP* + tumour-propagating cell (TPC) denoted by arrowheads. Scale bar equals 2 mm in **a**, 5 mm in **b**, $100 \mu\text{m}$ (**c**, left panel) and $25 \mu\text{m}$ (**c**, right panel).

regional dominance of a single clone within each villus³⁷. In the cancer setting, elegant cell lineage tracing experiments have confirmed that clonal drift can impart regional dominance of Lgr5+ intestinal crypt stem cells in mouse intestinal adenomas³⁸. To assess if clonal drift may also account for dominance of T-ALL clones over time, T-ALL clones that had similar growth rates and LPC frequencies were transplanted into recipient *rag2*^{E450fs} (*casper*) fish (3.3×10^4 of each clone, 1.0×10^5 total cells per recipient animal). Despite these leukaemias having similar growth rates, latency and LPC frequencies (Fig. 4a–c), the AmCyan+ clone was consistently outcompeted over time, comprising only $9.8 \pm 6.4\%$ of the leukaemia by 22–24 d.p.t. (Fig. 4d,e). By contrast, the remaining leukemias contained both mCherry+ and ZsYellow+ cells and in some instances dominance of one clone prevailed (Fig. 4f, $n = 16$ animals). To rule out the potential effects of fluorescent labelling may have on the proliferation of leukaemia cells, we repeated the same experiment with another combination of AmCyan, ZsYellow and mCherry T-ALL clones that also shared similar LPC

frequency and latency. Interestingly, with this combination, the ZsYellow-labelled cells was reproducibly outcompeted by the AmCyan- or mCherry-labelled cells, with dominance of these latter clones being observed in animals over time ($n = 13$ animals total, 2 independent experiments, Supplementary Fig. 3). We conclude that clonal dominance can result from inherent genetic and epigenetic differences between different tumour clones, which was not revealed using traditional limiting dilution cell transplantation approaches that only analyse the growth of individual clonal populations of cells. Moreover, our experiments provided additional evidence that neutral stochastic drift can account for emergence of clonal dominance over time.

Tumour evolution and metastasis in melanoma. Metastasis is a major clinical challenge for those diagnosed with melanoma and is associated with poor prognosis^{39,40}. Not all cancer cells can enter the circulation and seed new areas of tumour growth, suggesting that heterogeneity and continued clonal evolution

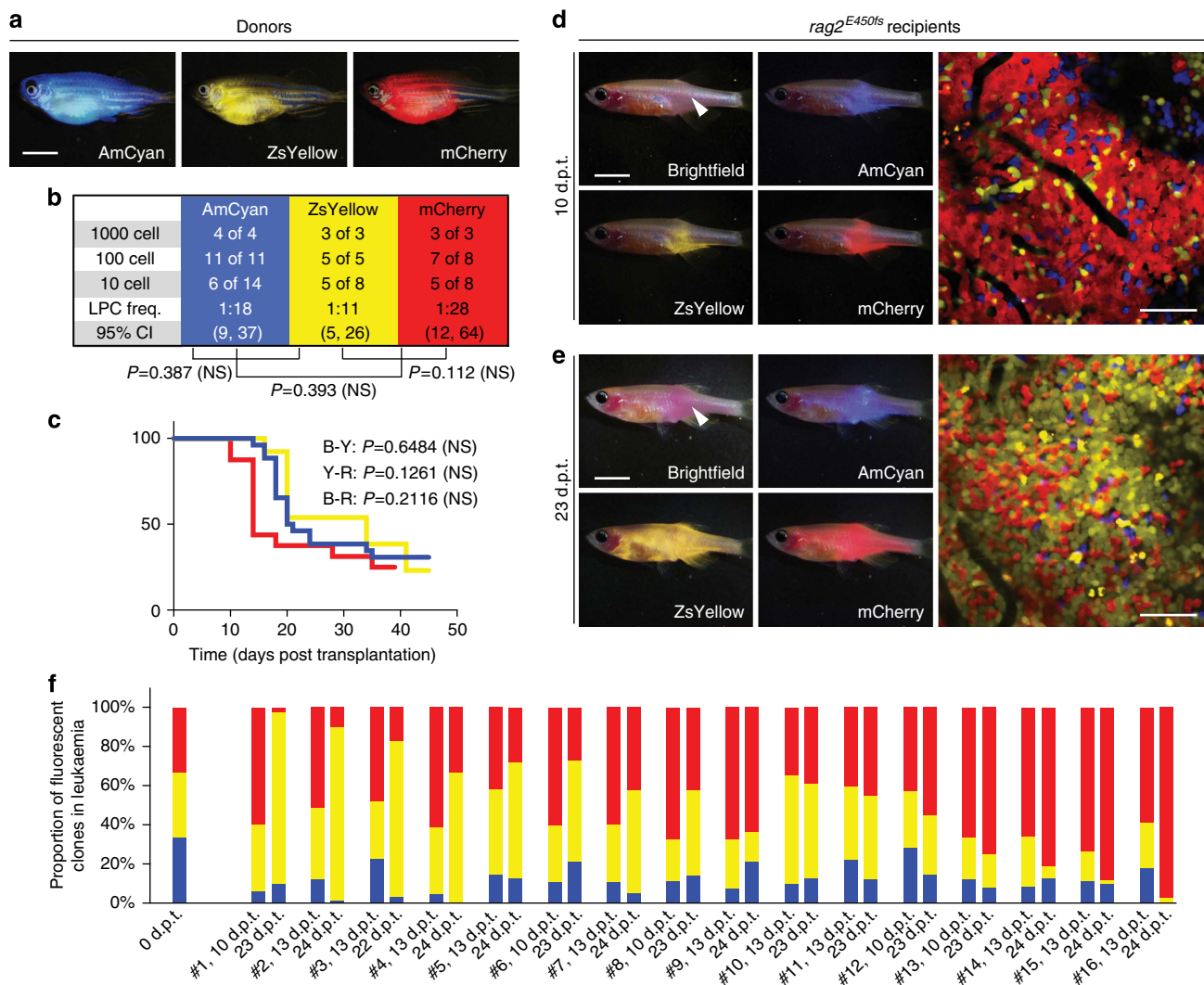


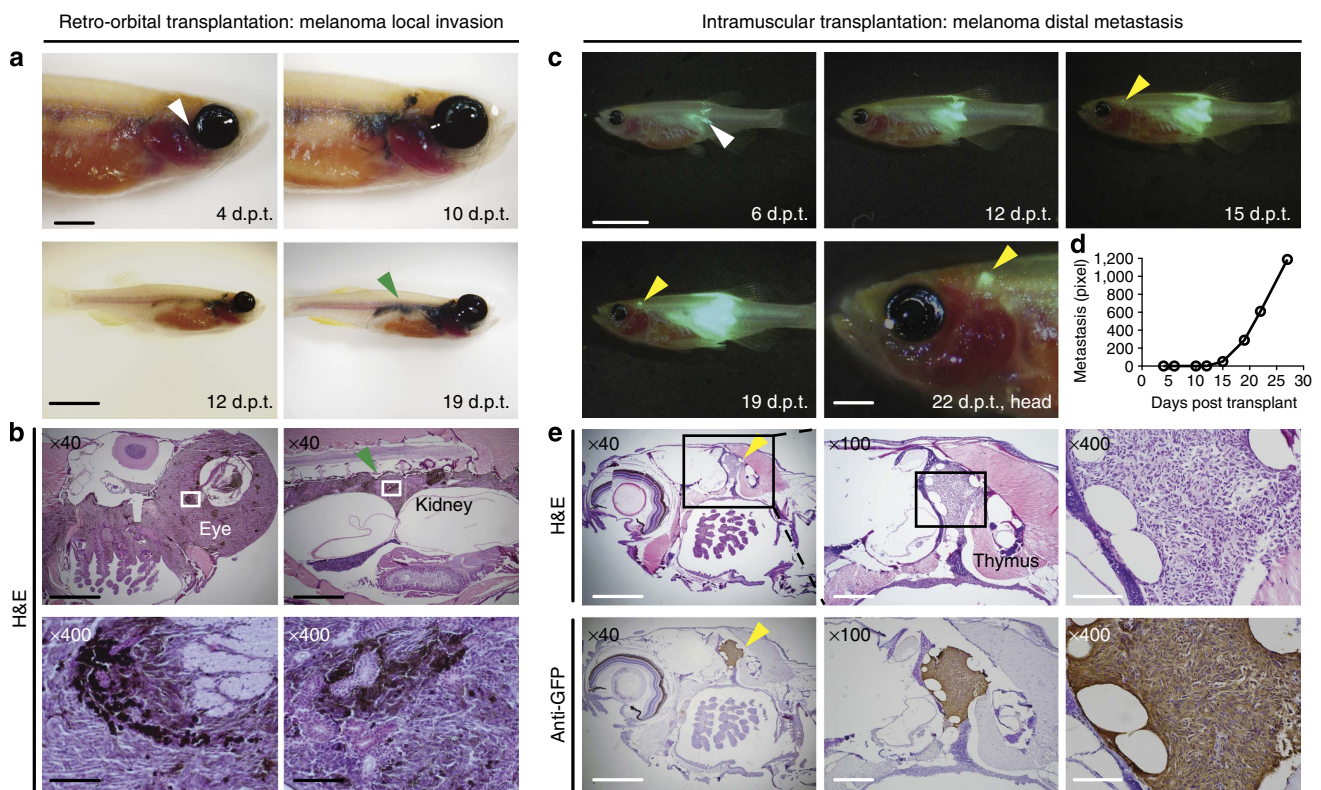
Figure 4 | Visualizing the emergence of clonal dominance in Myc-induced T-ALL. (a) Donor animals engrafted with monoclonal T-ALL arising in the *CG1* background. (b,c) Monoclonal T-ALLs were implanted into the syngeneic *CG1* strain fish and assessed for LPC frequency by limiting dilution cell transplantation (b) or latency of regrowth (c). *P*-values are noted within each panel. Not significant (NS). (d,e) Confocal imaging of engrafted *rag2*^{E450fs} (*casper*) fish at 10 d.p.t. (d) and 23 d.p.t. (e). White arrow denotes site of injection, and the location for confocal imaging. (f) Relative proportions of each fluorescent clone contained within leukaemias from individual engrafted animals ($n = 16$ animals). Imaging was completed on the same animals at 10–13 d.p.t. and 22–24 d.p.t. The ZsYellow+ clone dominates leukaemia regrowth in animals #1–3, whereas mCherry+ dominates in animals #13–16. Scale bars equal 5 mm in whole animal images and 50 μ m in confocal images.

likely drive metastasis in a large subset of cancers⁴¹. Yet, to date, zebrafish models of *bona fide* metastatic progression have not been fully described. To recapitulate metastasis in adult zebrafish, we first transplanted melanoma cells retro-orbitally into the recipient *rag2*^{E450fs} (*casper*) fish. Robust engraftment was observed at the site of injection, followed by local infiltration into structures adjacent the gill, head kidney and kidney marrow (Fig. 5a,b). Yet, with a stringent definition of metastasis, we could not document a single case where metastasis originated from haematogenous spread or was delineated by growth clearly separated from the primary site.

To further refine methods to assess metastatic spread, we next injected GFP-labelled, *BRAF*^{V600E}, *tp53*^{-/-} melanoma cells into the dorsal musculature of *rag2*^{E450fs} (*casper*) zebrafish, reasoning that infiltration into muscle would be clearly distinguished from seeding of distant sites within the visceral organs. Using this approach, three out of six primary melanomas metastasized to structures near the thymus and head musculature that were clearly distinct from the primary lesion (Fig. 5c and Supplementary Table 2). In total, 8 of 58 engrafted animals harboured distant metastasis by 30 d.p.t. (Supplementary Table 2). Metastatic growth was easily quantified over time following serial imaging of the same animal (Fig. 5d). GFP + metastatic lesions were independently confirmed by histo-pathological analysis for morphology, pigmentation and anti-GFP immunostaining on section (Fig. 5e). Using similar

approaches, we have also dynamically visualized metastatic tumour growth in neuroblastoma and ERMS (Supplementary Fig. 4), suggesting this approach will likely be broadly useful for assessing the kinetics of metastatic colonization and growth in a wide range of solid tumours.

We next wanted to assess how metastatic potential may change in the same tumour over time and whether serial passaging of individual melanomas could result in phenotypic changes, including increased aggression, invasion and acquisition of metastatic characteristics. Specifically, two non-metastatic *BRAF*^{V600E}, *p53*^{-/-} melanomas at the 1^o passage were implanted into the dorsal musculature of *rag2*^{E450fs} (*casper*) zebrafish and animals assessed for local engraftment, invasion and metastatic growth following serial passaging. Sectioning and microscopic analysis confirmed that early passaged melanomas were not metastatic and tumours were confined to the site of injection (Fig. 6a and Supplementary Fig. 5a). Following serial passaging, one melanoma continued to resemble the parental tumour and did not change its growth rate or metastatic potential (8 passages, total 191 days *in vivo*, Supplementary Fig. 5b,c). By contrast, the second melanoma lost pigmentation, had significantly accelerated growth and harboured metastatic lesions (7 passages, total 134 days *in vivo*, Fig. 6b,c). With this particular tumour, GFP + lesions were found to have metastasized to the mesonephric trunk kidney by 6 d.p.t., which eventually spread to the regions adjacent to the thymus and head kidney by 12 d.p.t.



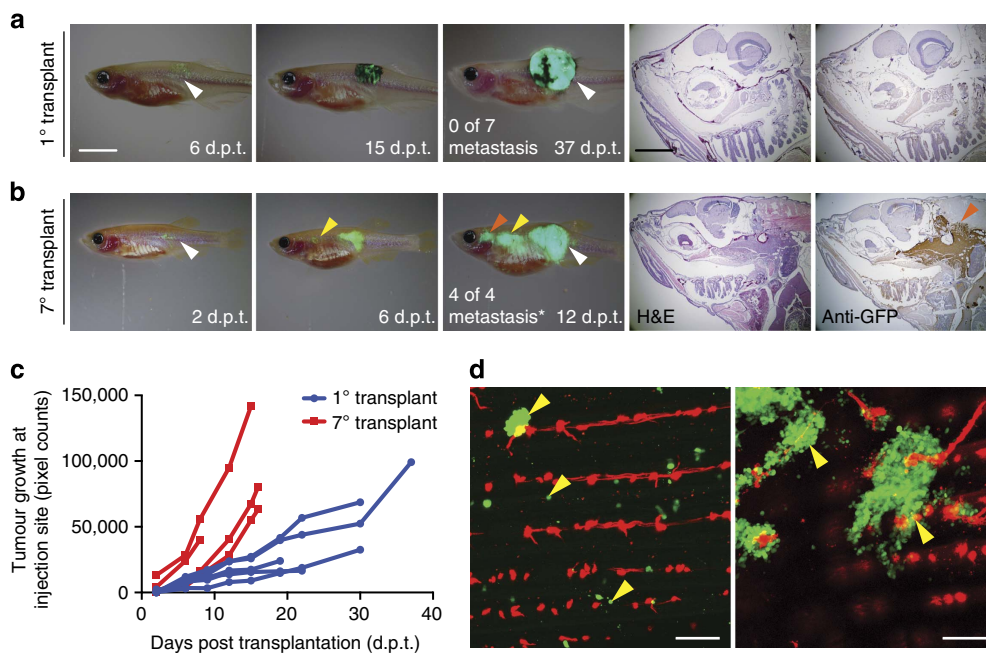


Figure 6 | Assessing metastatic potential and the functional consequences of tumour evolution in melanoma. (a,b) Serial imaging of engrafted GFP-labelled melanoma implanted into adult *rag2^{E450fs}* (*casper*) mutant fish. The 1° transplanted was pigmented (**a**), whereas the 7° transplanted melanoma had lost pigmentation (**b**). Number of animals with metastatic growth is noted (* $P=0.003$, Fisher's exact test comparing 1° and 7° transplanted). White arrow indicates the site of injection. Yellow and red arrows denote sites of distal metastases. Histological staining (H&E and anti-GFP) of distal metastasis is shown in the right panels. (**c**) Quantification of tumour growth at the site of initial engraftment over time. (**d**) Confocal imaging of micro-metastatic lesions found adjacent to the tail vasculature of *flk1:mCherry*; *rag2^{E450fs}* (*casper*)-recipient fish engrafted with 7° transplanted melanoma. Yellow arrows denote micro-metastatic lesions. Scale bars equal 5 mm for whole animal images in **a,b**, 2 mm for histology shown in **a,b** and 200 μm in **d**.

($n=4$ of 4, $P=0.003$, two-tailed Fisher's exact test). Confocal imaging revealed seeding of GFP-labelled cells to distal sites within the tail of the recipient fish, suggesting the formation of micro-metastatic lesions adjacent to *flk1:mCherry*-labelled vasculature ($n=2$, Fig. 6d). Our experiments confirm that not all melanoma cells have metastatic capacity and that evolution of metastatic potential occurs in melanoma, consistent with that have been reported for human melanoma^{42,43}. In total, our model provides a dynamic imaging platform to visualize the tropism of metastasis.

Discussion

Imaging cancer cell heterogeneity and the hallmarks of cancer in live animals has been a challenge. Many investigators have developed imaging modalities and complex surgical approaches in rodent models to gain optical access to developing tumours. These approaches often require implantation of imaging windows for repeated high-resolution IVM^{10,11}. Using these experimental platforms, investigators have successfully imaged several hallmarks of cancer, including migration⁴⁴, intravasation⁴⁵, extravasation⁴⁶, invasion⁴⁷ and metastasis^{12,14}, as well as responses to chemotherapies *in vivo*⁴⁸. In hope of bypassing the need for surgical intervention and overcoming the limitation of visualizing cancer cells only within predetermined imaging windows, we engrafted fluorescently labelled cancers into optically clear immune-compromised zebrafish and directly imaged tumours using confocal microscopy. Engraftment of fluorescent cancers into the *rag2^{E450fs}* (*casper*) zebrafish has facilitated the direct visualization of single cancer cells, functional differences between tumour cell clones and several hallmarks of cancer including acquisition of elevated growth potential, development of new vascular networks and acquired cell motility leading to invasion and metastasis.

The functional consequences of tumour cell heterogeneity have only recently begun to be explored using IVM, and a number of interesting and unexpected tumour cell behaviours have been revealed. For example, our group has utilized fluorescent transgenic approaches to label ERMS cells based on muscle differentiation status¹⁸. Our experiments uncovered that differentiated ERMS cells seed new areas of growth, followed later by slow-moving, less-differentiated *myf5* + TPCs, challenging the notion that cancer stem cells drive invasion and metastasis. Imaging approaches have not been limited to analysis of primary tumours. Rather, Chapman *et al.* have used xenograft cell transplantation of human melanoma cells into larval zebrafish to assess the effects of intra-tumoral heterogeneity on growth⁴⁹. They found that tumours with high invasive capacity could impart migratory potential to poorly invasive cell types. Moreover, the poorly invasive cells could also enhance colonization by aggressive melanomas when co-implanted into larval fish, suggesting cell-cell cross-talk and collaborative signalling networks can enhance migratory and invasive behaviour between melanoma subclones. Using differential labelling of human melanoma cells with GFP and mCherry, these authors were able to dynamically image these processes in live engrafted fish. Here, we performed proof-of-concept experiments to assess the utility of *rag2^{E450fs}* (*casper*) zebrafish for visualizing engraftment of heterogeneous ERMS cells in live animals. For example, we directly visualized niche partitioning based on differentiation status using fluorescently labelled ERMS cells. These niches are not anatomically confined by proximity to vessels, in contrast to what has been observed in osteosarcoma⁵⁰ and brain tumours^{13,51} where cancer stem cells lie in unique niches adjacent vessels. Furthermore, cell transplantation into orthotopic sites in the *rag2^{E450fs}* (*casper*) zebrafish permitted imaging of cells at single-cell resolution in live animals. We envision that similar strategies will likely aid in assessing stromal

cell contributions to tumour growth. In total, our cell transplantation and imaging approaches will likely facilitate efforts in defining how niche topology is established and ultimately influences continued tumour growth.

Evidence for continued clonal evolution and selection following treatment has now been seen in a wide range of human cancers. For example, human leukaemias and myelomas are oligoclonal at diagnosis; however, relapse is commonly driven by an underrepresented clone contained within the primary malignancy^{31–35}. Similar dynamics of heterogeneity has also been observed in solid tumours. For example, triple-negative breast cancers are comprised of heterogeneous clones that harbour a wide spectrum of mutations that can change from the time of diagnosis to relapse^{52,53}. Altering frequencies of specific clones have also been observed during tumour progression in pancreatic cancer^{54,55} and brain tumours⁵⁶. Elegant cell lineage tracing experiments in mice have shown experimentally that stochastic clonal drift can contribute to regional dominance of *Lgr5*+ intestinal crypt stem cells in mouse intestinal adenomas³⁸, yet it is unclear if this pattern applies to a wider array of cancer subtypes. Here, we have experimentally recreated tumour cell heterogeneity by implanting equal numbers of fluorescently labelled T-ALL clones into the *rag2*^{E450fs} (*casper*) zebrafish. By competing these T-ALL clones together, we find that one clone was consistently outcompeted over time despite having equal self-renewal potential and overall growth kinetics. Our data suggest that subtle functional variations can exist within clones that may not be uncovered using traditional cell transplantation assays that assess tumour regrowth of only single clones, likely underestimating differences in latency and LPC frequency. Alternatively, these data may suggest that clones actively suppress the growth of other clones and/or secrete factors to enhance growth of only related cells. This interpretation is consistent with recent findings in breast cancer where paracrine factor signalling from one clone can alter growth of unrelated clones within the tumour⁵⁷. Taken together, these *in vivo* competition experiments have uncovered interesting and potentially new biology that could not have been discovered using traditional limiting dilution cell transplantation approaches, facilitating the dynamic emergence of clonal dominance within the same animal overtime.

Metastasis can be experimentally assessed in mouse models by engrafting tumour cells into the vasculature and then identifying metastatic lesions at necropsy. Alternatively, luciferase bioluminescent imaging and non-invasive, whole-body imaging methods have also been developed, including computed X-Ray tomography, positron emission tomography and magnetic resonance imaging. These imaging modalities are limited to detection of tumours that are 200 µm in diameter, expensive and largely inaccessible to many laboratories^{58–60}. Here, we have optimized cell transplantation into adult, immune-deficient *rag2*^{E450fs} (*casper*) zebrafish in order to dynamically visualize tumour cell migration, invasion and metastasis at high resolution. We performed cell transplantation of fluorescently labelled zebrafish tumour into the optic vessels and dorsal musculature, establishing that metastatic progression is best assessed following injection into the dorsal musculature. Furthermore, we have been able to visualize the dissemination of micro-metastatic lesions to sites adjacent to the tail vasculature in *flk1:mCherry; rag2*^{E450fs} (*casper*) zebrafish using simple confocal imaging. Finally, using serial transplantation, we were able to evolve melanomas with high metastatic potential, providing a novel platform for identifying driver mutations that are specifically correlated with progression. We envision that facile genetic approaches including transgenesis and genetic knock-out using CRISPR/Cas9 will quickly make zebrafish the choice experimental model for assessing gene

pathways that modulate tumour progression and metastasis, especially in the transplantation setting.

Methods

Creation of *rag2*^{E450fs} (*casper*) homozygous mutant zebrafish. Zebrafish studies were approved by the Massachusetts General Hospital Subcommittee on Research Animal Care (protocol #2011N000127).

rag2^{E450fs} (*casper*) homozygous mutant zebrafish were created by crossing *rag2*^{E450fs} (*rag2*^{fb101}) mutant fish into the *casper* background¹⁹. Animals were maintained as *rag2*^{E450fs/+}; *roy*^{-/-}; *mitfa*^{-/-} lines and in-crossed to generate triple mutant animals. Resulting progeny were fin clipped and genotyped using the same method as we previously published²². Specifically, genomic DNA was extracted using the Hotshot method described by Meeker *et al.*⁶¹, and subjected to PCR using forward primer 5'-ACTGCTCTAGTTGCAATTCCT-3' and reverse primer 5'-AGCTGGGGTCATCTTCAGT-3'. PCR was completed using 94 °C denaturation for 30 s, 54 °C annealing for 30 s and 68 °C elongation for 45 s (35 cycles). PCR-amplified products were then incubated at 37 °C overnight with XcmI, which created a single cut in the mutant allele. Finally, DNA products were released either on a 2% agarose gel or using the Qiaxcel genotyping system. For neovascularization studies, *flk1:mCherry* transgenic fish⁶² were crossed with *rag2*^{E450fs} (*casper*) fish and in-crossed to create compound mutant animals.

Tumour creation and cell transplantation into zebrafish. Primary and serially passaged tumours were derived from established transgenic zebrafish models. For example, T-ALLs were created by co-microinjection of linearized *rag2:cMyc* and fluorescent transgenic reporters into one-cell stage *CG1* fish^{36,63} (Figs 1 and 4 and Supplementary Figs 1–3). GFP-labelled ERMS were created by co-microinjection of linearized *rag2:kRAS^{G12D}* and *rag2:GFP* transgenes into one-cell stage *CG1* fish⁶⁴ (Fig. 2); double-fluorescent ERMS were created by microinjection of linearized *rag2:kRAS^{G12D}* into one-cell-stage stable transgenic *myf5:GFP; mylpfa:mCherry* *CG1* fish¹⁸ (Fig. 1 and Supplementary Fig. 4). Triple-fluorescent transgenic ERMS were created by microinjecting the linearized *rag2:kRAS^{G12D}* transgene into one-cell stage stable transgenic *myf5:GFP; myogenin-H2b:mRFP; mylpfa:lyn-cyan* zebrafish in the AB background (Fig. 3). Melanomas were created by overexpression of MiniCoopR-EGFP in the embryos of *Tg (mitfa:BRAF^{V600E}); mitfa*^{-/-}; *tp53*^{-/-} or *Tg (mitfa:BRAF^{V600E}); mitfa*^{-/-}; *tp53*^{-/-}; *alb*^{-/-} zebrafish²⁷ (Figs 1,2,5 and 6 and Supplementary Fig. 5), and were a kind gift from the Houvras laboratory. The official ZFIN designation for the *tp53*^{-/-} zebrafish line is *zdf1^{M214K}*, originally reported by Berghmans *et al.*⁶⁵. Neuroblastomas were a kind gift from the Look laboratory²⁴.

Cell transplantation experiments utilized both male and female *rag2*^{E450fs} (*casper*) homozygous mutant zebrafish. Recipient animals were transplanted at 2–4 months of age. Tumour cell transplantations were completed by intra-peritoneal, intra-muscular and retro-orbital injections^{66–68}. Intra-muscular and retro-orbital injections were completed using microinjection of 2–3 µl of cell suspension. Recipient fish were scored for tumour engraftment, growth, invasion or metastasis by epi-fluorescent microscopy every 3–4 days until 30 d.p.t. or when animals were moribund.

Confocal imaging of neovascularization and micro-metastasis. *rag2*^{E450fs} (*casper*) animals were engrafted with GFP-labelled ERMS or melanoma. To visualize tumour vasculature, animals were injected with Quantum dot 655 reagent (Qtracker 655, 405–615 nm excitation, 655 nm emission, 2.0 µM, Life Technologies Cat# Q21021MP). Specifically, animals were injected with freshly prepared 1:3 diluted reagent (1 volume Qtracker 655 solution diluted in 2 volumes of 0.9x PBS, yielding a final concentration of 0.66 µM) using a 26s gauge Hamilton syringe (4 µl injected intra-peritoneally, and 2 µl directly into the dorsal aorta). After 30 min, animals were anaesthetized using 168 mg l⁻¹ Tricaine (MS-222, pH = 7.5) and placed onto a 12.0-mm glass bottom imaging plate (Thermo Scientific, Cat# 150680). Under anaesthesia, motor functions of the animal were greatly reduced and operculum movements were significantly slowed. Each animal was imaged under anaesthesia for 1–2 min, allowing enough time for z-stack imaging or multi-position single plane imaging using confocal microscopy. To ensure optimal survival of the adult zebrafish being imaged, anaesthetized animals were simply laid down on the side in the imaging dish, with the tumour facing towards the lens. No agarose embedding of the sample was used. Imaging was completed using an inverted Zeiss LSM 710 confocal microscope. For neovascularization (Fig. 2) and micro-metastasis imaging (Fig. 6d), z-stack imaging at ×100 magnification was achieved with a ×10 objective (numerical aperture = 0.45, coverglass thickness = 0.17 mm, working distance = 2.0 mm). Image series were acquired in the ZEN software (single pass point scanning at ~10 µm per step over 100–200 µm distances). Fluorescent imaging was completed using the following settings: GFP: excitation = 488 nm, emission = 503–528 nm; mCherry/mRFP: excitation = 561 nm, emission = 602–624 nm; Qtracker 655: use AlexaFluor647 setting, excitation = 633 nm, emission = 638–755 nm. Laser intensity percentages were set to be between 10 and 20% depending on the brightness of the fluorescent labels used. The 'Best Signal' option in the 'Smart Setup' was used for easy modulation of the gating of each colour. For imaging fluorescent combinations, gate settings were manually adjusted to avoid overlap of fluorescent signals. For z-stack images,

planes were merged based on maximum intensity in Fiji (ImageJ). After imaging, fish were immediately transferred into recovery tanks that contained fresh system water, and later returned to the facility.

Confocal imaging of heterogeneity in ERMS and T-ALL. Multi-colour confocal fluorescence imaging was completed in both ERMS and T-ALL. Specifically, in ERMS (Fig. 3) and T-ALL (Fig. 4 and Supplementary Figs 2,3), we simultaneously imaged using three-colour combinations including AmCyan (excitation = 458 nm, emission = 472–508 nm), GFP (excitation = 488 nm, emission = 493–586 nm), ZsYellow (excitation = 514 nm, emission = 521–547 nm), DsRED (excitation = 561 nm, emission = 575–703 nm) and mCherry/mRFP (excitation = 561 nm, emission = 602–623 nm). Laser intensity percentages were set to be 18%. For imaging at single-cell resolution, $\times 400$ magnification was achieved with a $\times 40$ water emersion objective (NA = 1.3, coverglass thickness = 0.14–0.19 mm, working distance = 0.62 mm for 0.17 mm coverglass). The 'Best Signal' option in the 'Smart Setup' was used for easy modulation of the gating of each colour. For T-ALL, proportions of each clone were quantified in the Fiji (ImageJ) software by measure of area covered by each fluorescent colour (Fig. 4 and Supplementary Fig. 2,3f), or manual cell counts (Supplementary Fig. 3g). Both quantification methods produce consistently similar results.

Histological examination. Tumour histology was performed on animals as previously described²². Briefly, animals were fixed in 4% paraformaldehyde, embedded in paraffin and step sectioned. Adjacent slides were stained with haematoxylin and eosin or anti-GFP (Living Colors Monoclonal Antibody JL-8, Clontech, 1:1,000 dilution).

Statistical methods. Leukaemia propagating cell frequencies were calculated using the extreme limiting dilution analysis software (<http://bioinf.wehi.edu.au/software/elda/>). Differences in the LPC frequency were reported with a 95% confidence interval. Differences of latency were assessed by log-rank (Mantel-Cox) tests (Fig. 4 and Supplementary Figs 2,3). In the melanoma evolution experiments (Fig. 6), increased metastatic potential was assessed by Fisher's exact test, comparing the number of animals with metastatic disease at 1° transplant with those found after 7° transplant.

References

- Hanahan, D. & Weinberg, R. A. Hallmarks of cancer: the next generation. *Cell* **144**, 646–674 (2011).
- Hanahan, D. & Weinberg, R. A. The hallmarks of cancer. *Cell* **100**, 57–70 (2000).
- Janiszewska, M. & Polyak, K. Clonal evolution in cancer: a tale of twisted twins. *Cell Stem Cell* **16**, 11–12 (2015).
- Burrell, R. A. & Swanton, C. Tumour heterogeneity and the evolution of polyclonal drug resistance. *Mol. Oncol.* **8**, 1095–1111 (2014).
- Easwaran, H., Tsai, H. C. & Baylin, S. B. Cancer epigenetics: tumor heterogeneity, plasticity of stem-like states, and drug resistance. *Mol. Cell* **54**, 716–727 (2014).
- Polyak, K. Tumor heterogeneity confounds and illuminates: a case for Darwinian tumor evolution. *Nat. Med.* **20**, 344–346 (2014).
- Almendro, V. *et al.* Inference of tumor evolution during chemotherapy by computational modeling and in situ analysis of genetic and phenotypic cellular diversity. *Cell Rep.* **6**, 514–527 (2014).
- Gerlinger, M. *et al.* Genomic architecture and evolution of clear cell renal cell carcinomas defined by multiregion sequencing. *Nat. Genet.* **46**, 225–233 (2014).
- McFadden, D. G. *et al.* Genetic and clonal dissection of murine small cell lung carcinoma progression by genome sequencing. *Cell* **156**, 1298–1311 (2014).
- Pittet, M. J. & Weissleder, R. Intravital imaging. *Cell* **147**, 983–991 (2011).
- Ellenbroek, S. I. & van Rheenen, J. Imaging hallmarks of cancer in living mice. *Nat. Rev. Cancer* **14**, 406–418 (2014).
- Kedrin, D. *et al.* Intravital imaging of metastatic behavior through a mammary imaging window. *Nat. Methods* **5**, 1019–1021 (2008).
- Calabrese, C. *et al.* A perivascular niche for brain tumor stem cells. *Cancer Cell* **11**, 69–82 (2007).
- Ritsma, L. *et al.* Intravital microscopy through an abdominal imaging window reveals a pre-micrometastasis stage during liver metastasis. *Sci. Transl. Med.* **4**, 158ra145 (2012).
- Livet, J. *et al.* Transgenic strategies for combinatorial expression of fluorescent proteins in the nervous system. *Nature* **450**, 56–62 (2007).
- Snippert, H. J. *et al.* Intestinal crypt homeostasis results from neutral competition between symmetrically dividing Lgr5 stem cells. *Cell* **143**, 134–144 (2010).
- Zomer, A. *et al.* Intravital imaging of cancer stem cell plasticity in mammary tumors. *Stem Cells* **31**, 602–606 (2013).
- Ignatius, M. S. *et al.* In vivo imaging of tumor-propagating cells, regional tumor heterogeneity, and dynamic cell movements in embryonal rhabdomyosarcoma. *Cancer Cell* **21**, 680–693 (2012).
- White, R. M. *et al.* Transparent adult zebrafish as a tool for in vivo transplantation analysis. *Cell Stem Cell* **2**, 183–189 (2008).
- Feng, H. *et al.* T-lymphoblastic lymphoma cells express high levels of BCL2, SIP1, and ICAM1, leading to a blockade of tumor cell intravasation. *Cancer Cell* **18**, 353–366 (2010).
- Sander, J. D. *et al.* Selection-free zinc-finger-nuclease engineering by context-dependent assembly (CoDA). *Nat. Methods* **8**, 67–69 (2011).
- Tang, Q. *et al.* Optimized cell transplantation using adult rag2 mutant zebrafish. *Nat. Methods* **11**, 821–824 (2014).
- Langenau, D. M. *et al.* Myc-induced T cell leukemia in transgenic zebrafish. *Science* **299**, 887–890 (2003).
- Zhu, S. *et al.* Activated ALK collaborates with MYCN in neuroblastoma pathogenesis. *Cancer Cell* **21**, 362–373 (2012).
- Langenau, D. M. *et al.* Effects of RAS on the genesis of embryonal rhabdomyosarcoma. *Genes Dev.* **21**, 1382–1395 (2007).
- Patton, E. E. *et al.* BRAF mutations are sufficient to promote nevi formation and cooperate with p53 in the genesis of melanoma. *Curr. Biol.* **15**, 249–254 (2005).
- Ceol, C. J. *et al.* The histone methyltransferase SETDB1 is recurrently amplified in melanoma and accelerates its onset. *Nature* **471**, 513–517 (2011).
- Tobia, C., Gariano, G., De Sena, G. & Presta, M. Zebrafish embryo as a tool to study tumor/endothelial cell cross-talk. *Biochim. Biophys. Acta* **1832**, 1371–1377 (2013).
- Zhao, C. *et al.* A novel xenograft model in zebrafish for high-resolution investigating dynamics of neovascularization in tumors. *PLoS ONE* **6**, e21768 (2011).
- Michalet, X. *et al.* Quantum dots for live cells, in vivo imaging, and diagnostics. *Science* **307**, 538–544 (2005).
- Mullighan, C. G. *et al.* Genomic analysis of the clonal origins of relapsed acute lymphoblastic leukemia. *Science* **322**, 1377–1380 (2008).
- Clemente, M. J. *et al.* Clonal drift demonstrates unexpected dynamics of the T-cell repertoire in T-large granular lymphocyte leukemia. *Blood* **118**, 4384–4393 (2011).
- Bahlis, N. J. Darwinian evolution and tiding clones in multiple myeloma. *Blood* **120**, 927–928 (2012).
- Ding, L. *et al.* Clonal evolution in relapsed acute myeloid leukaemia revealed by whole-genome sequencing. *Nature* **481**, 506–510 (2012).
- Landau, D. A. *et al.* Evolution and impact of subclonal mutations in chronic lymphocytic leukemia. *Cell* **152**, 714–726 (2013).
- Blackburn, J. S. *et al.* Clonal evolution enhances leukemia-propagating cell frequency in T cell acute lymphoblastic leukemia through Akt/mTORC1 pathway activation. *Cancer Cell* **25**, 366–378 (2014).
- Lopez-Garcia, C., Klein, A. M., Simons, B. D. & Winton, D. J. Intestinal stem cell replacement follows a pattern of neutral drift. *Science* **330**, 822–825 (2010).
- Schepers, A. G. *et al.* Lineage tracing reveals Lgr5+ stem cell activity in mouse intestinal adenomas. *Science* **337**, 730–735 (2012).
- Barth, A., Wanek, L. A. & Morton, D. L. Prognostic factors in 1,521 melanoma patients with distant metastases. *J. Am. Coll. Surg.* **181**, 193–201 (1995).
- Dadras, S. S. *et al.* Tumor lymphangiogenesis: a novel prognostic indicator for cutaneous melanoma metastasis and survival. *Am. J. Pathol.* **162**, 1951–1960 (2003).
- Goswami, R. S. *et al.* Hotspot mutation panel testing reveals clonal evolution in a study of 265 paired primary and metastatic tumors. *Clin. Cancer Res.* **21**, 2644–2651 (2015).
- Herlyn, M. Human melanoma: development and progression. *Cancer Metastasis Rev.* **9**, 101–112 (1990).
- Shi, H. *et al.* Acquired resistance and clonal evolution in melanoma during BRAF inhibitor therapy. *Cancer Discov.* **4**, 80–93 (2014).
- Patsialou, A. *et al.* Intravital multiphoton imaging reveals multicellular streaming as a crucial component of in vivo cell migration in human breast tumors. *Intravital* **2**, e25294 (2013).
- Dovas, A., Patsialou, A., Harney, A. S., Condeelis, J. & Cox, D. Imaging interactions between macrophages and tumour cells that are involved in metastasis in vivo and in vitro. *J. Microsc.* **251**, 261–269 (2013).
- Stoletov, K. *et al.* Visualizing extravasation dynamics of metastatic tumor cells. *J. Cell Sci.* **123**, 2332–2341 (2010).
- Hulit, J. *et al.* The use of fluorescent proteins for intravital imaging of cancer cell invasion. *Methods Mol. Biol.* **872**, 15–30 (2012).
- Burrell, K. *et al.* A novel high-resolution in vivo imaging technique to study the dynamic response of intracranial structures to tumor growth and therapeutics. *J. Vis. Exp.* e50363 (2013).
- Chapman, A. *et al.* Heterogeneous tumor subpopulations cooperate to drive invasion. *Cell Rep.* **8**, 688–695 (2014).
- Siclar, V. A. & Qin, L. Targeting the osteosarcoma cancer stem cell. *J. Orthop. Surg. Res.* **5**, 78 (2010).
- Gilbertson, R. J. & Rich, J. N. Making a tumour's bed: glioblastoma stem cells and the vascular niche. *Nat. Rev. Cancer* **7**, 733–736 (2007).

52. Shah, S. P. *et al.* The clonal and mutational evolution spectrum of primary triple-negative breast cancers. *Nature* **486**, 395–399 (2012).
53. Curtis, C. *et al.* The genomic and transcriptomic architecture of 2,000 breast tumours reveals novel subgroups. *Nature* **486**, 346–352 (2012).
54. Yachida, S. *et al.* Distant metastasis occurs late during the genetic evolution of pancreatic cancer. *Nature* **467**, 1114–1117 (2010).
55. Campbell, P. J. *et al.* The patterns and dynamics of genomic instability in metastatic pancreatic cancer. *Nature* **467**, 1109–1113 (2010).
56. Sottoriva, A. *et al.* Intratumor heterogeneity in human glioblastoma reflects cancer evolutionary dynamics. *Proc. Natl Acad. Sci. USA* **110**, 4009–4014 (2013).
57. Marusyk, A. *et al.* Non-cell-autonomous driving of tumour growth supports sub-clonal heterogeneity. *Nature* **514**, 54–58 (2014).
58. Rehemtulla, A. *et al.* Rapid and quantitative assessment of cancer treatment response using *in vivo* bioluminescence imaging. *Neoplasia* **2**, 491–495 (2000).
59. Edinger, M. *et al.* Advancing animal models of neoplasia through *in vivo* bioluminescence imaging. *Eur. J. Cancer* **38**, 2128–2136 (2002).
60. Sato, A., Klainberg, B. & Tolwani, R. *In vivo* bioluminescence imaging. *Comp. Med.* **54**, 631–634 (2004).
61. Meeker, N. D., Hutchinson, S. A., Ho, L. & Trede, N. S. Method for isolation of PCR-ready genomic DNA from zebrafish tissues. *Biotechniques* **43**, 610, 612, 614 (2007).
62. Wang, Y. *et al.* Moesin1 and Ve-cadherin are required in endothelial cells during *in vivo* tubulogenesis. *Development* **137**, 3119–3128 (2010).
63. Smith, A. C. *et al.* High-throughput cell transplantation establishes that tumor-initiating cells are abundant in zebrafish T-cell acute lymphoblastic leukemia. *Blood* **115**, 3296–3303 (2010).
64. Langenau, D. M. *et al.* Co-injection strategies to modify radiation sensitivity and tumor initiation in transgenic Zebrafish. *Oncogene* **27**, 4242–4248 (2008).
65. Berghmans, S. *et al.* tp53 mutant zebrafish develop malignant peripheral nerve sheath tumors. *Proc. Natl Acad. Sci. USA* **102**, 407–412 (2005).
66. Blackburn, J. S., Liu, S. & Langenau, D. M. Quantifying the frequency of tumor-propagating cells using limiting dilution cell transplantation in syngeneic zebrafish. *J. Vis. Exp.* e2790 (2011).
67. Tenente, I. M., Tang, Q., Moore, J. C. & Langenau, D. M. Normal and malignant muscle cell transplantation into immune compromised adult zebrafish. *J. Vis. Exp.* e52597 (2014).
68. Pugach, E. K., Li, P., White, R. & Zon, L. Retro-orbital injection in adult zebrafish. *J. Vis. Exp.* e1645 (2009).

Acknowledgements

This work was supported by Alex's Lemonade Stand Foundation (J.S.B., M.S.I., D.M.L.), the Live Like Bella Foundation for Childhood Cancer (D.M.L.), American Cancer Society (D.M.L.), the MGH Howard Goodman Fellowship (D.M.L.) and NIH grants R24OD016761, R01CA154923 and U54CA168512. Q.T. is funded by the China Scholarship Council. I.M.T. is funded by Fundação para a Ciência e Tecnologia, Portugal (SFRH/BD/51288/2010). We thank the Specialized Histopathology Services at Massachusetts General Hospital and the Dana-Farber/Harvard Cancer Center (P30 CA06516), Massachusetts General Hospital Cancer Center/Molecular Pathology Confocal Core and the Harvard Center for Biological Imaging for technical support; Drs Fabrice Laroche and Hui Feng for helpful suggestions; Brian Millet and Anthony Sinagra for helpful statistical advice.

Author contributions

Q.T. and D.M.L. designed the study. Q.T., J.C.M., M.S.I. and J.S.B. performed the experiments. M.S.I., J.S.B., I.M.T., M.N.H., E.G.G., N.T.Y., C.B., S.H., A.T.L. and Y.H. provided reagents and animals. Q.T. and D.M.L. analysed the data and wrote the manuscript with input from all authors.

Additional information

Supplementary Information accompanies this paper at <http://www.nature.com/naturecommunications>

Competing financial interests: The authors declare no competing financial interests.

Reprints and permission information is available online at <http://npg.nature.com/reprintsandpermissions/>

How to cite this article: Tang, Q. *et al.* Imaging tumour cell heterogeneity following cell transplantation into optically clear immune-deficient zebrafish. *Nat. Commun.* **7**:10358 doi: 10.1038/ncomms10358 (2016).



This work is licensed under a Creative Commons Attribution 4.0 International License. The images or other third party material in this article are included in the article's Creative Commons license, unless indicated otherwise in the credit line; if the material is not included under the Creative Commons license, users will need to obtain permission from the license holder to reproduce the material. To view a copy of this license, visit <http://creativecommons.org/licenses/by/4.0/>