



Understanding Today's Online GIS User Through the Lens of a WorldMap Survey

Citation

Guan, Weihe Wendy, Alenka Poplin, and Benjamin G. Lewis. 2015. "Understanding Today's Online GIS User Through the Lens of a WorldMap Survey." *Transactions in GIS* 19 (3) (June): 417–438. doi:10.1111/tgis.12150.

Published Version

doi:10.1111/tgis.12150

Permanent link

<http://nrs.harvard.edu/urn-3:HUL.InstRepos:26847182>

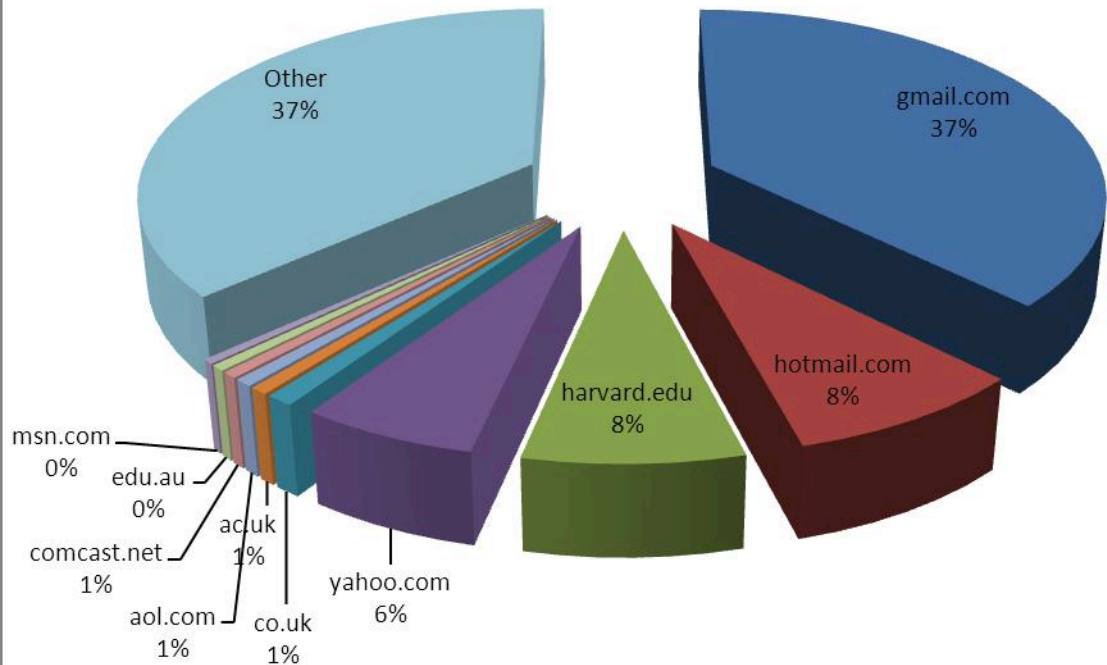
Terms of Use

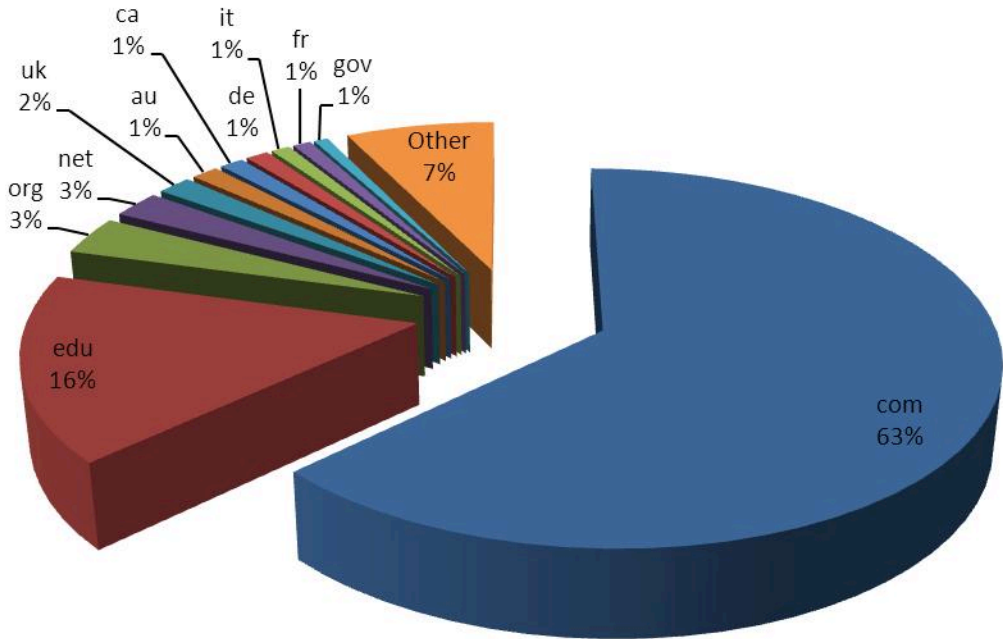
This article was downloaded from Harvard University's DASH repository, and is made available under the terms and conditions applicable to Other Posted Material, as set forth at <http://nrs.harvard.edu/urn-3:HUL.InstRepos:dash.current.terms-of-use#LAA>

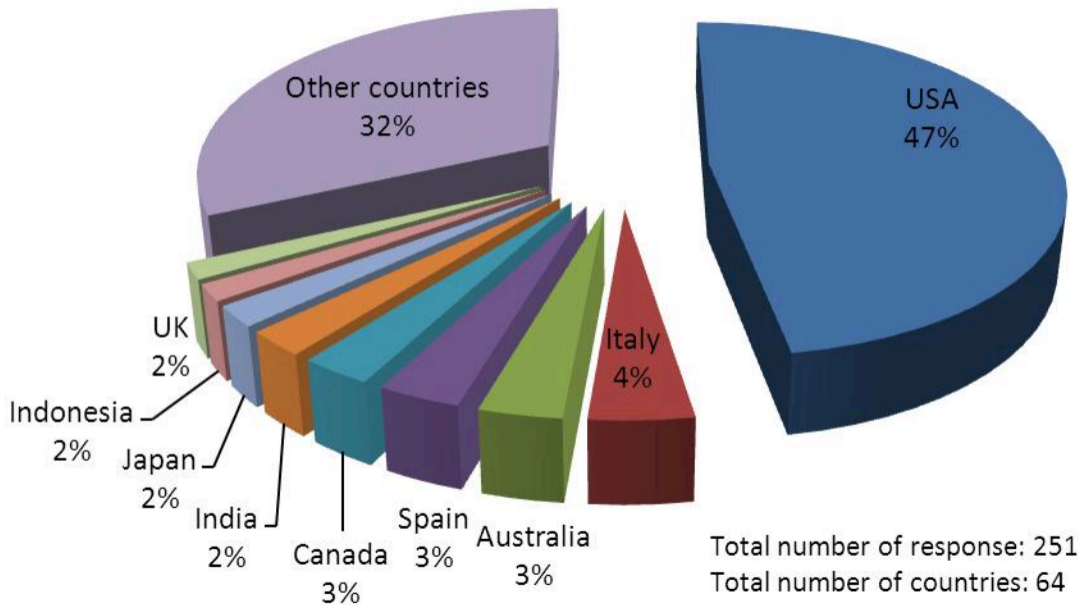
Share Your Story

The Harvard community has made this article openly available. Please share how this access benefits you. [Submit a story](#).

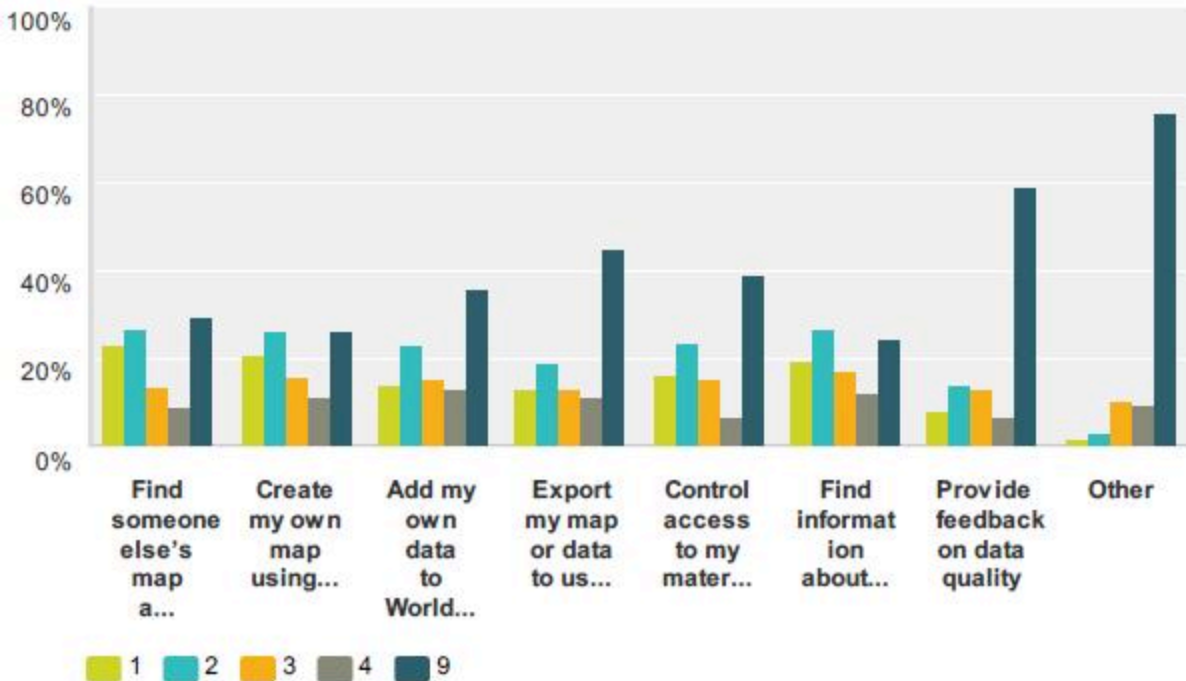
[Accessibility](#)



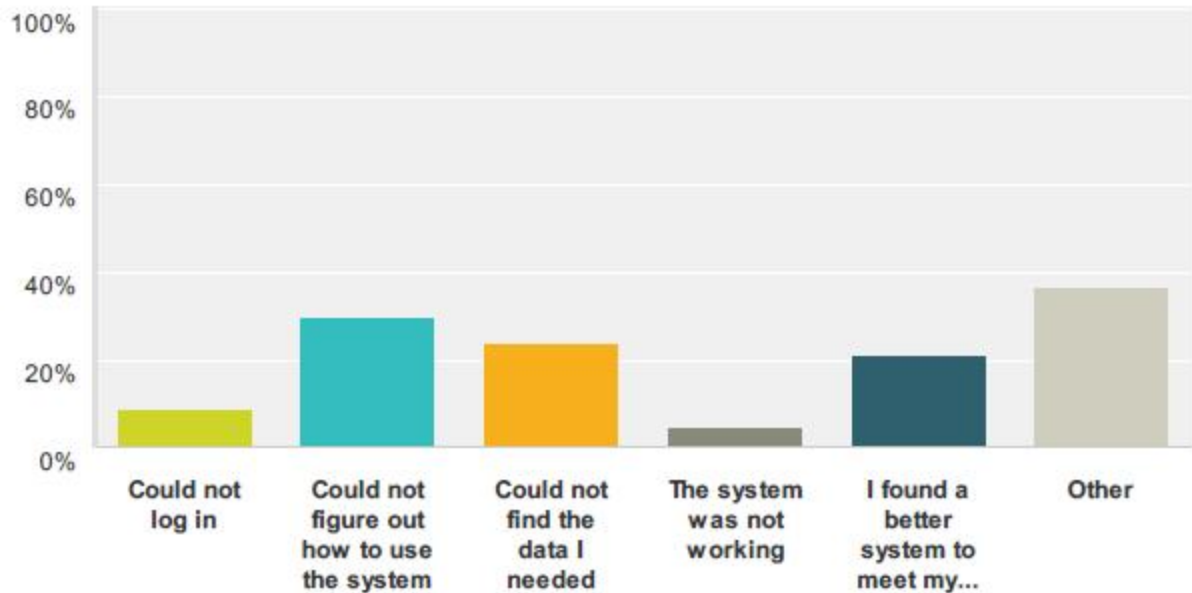


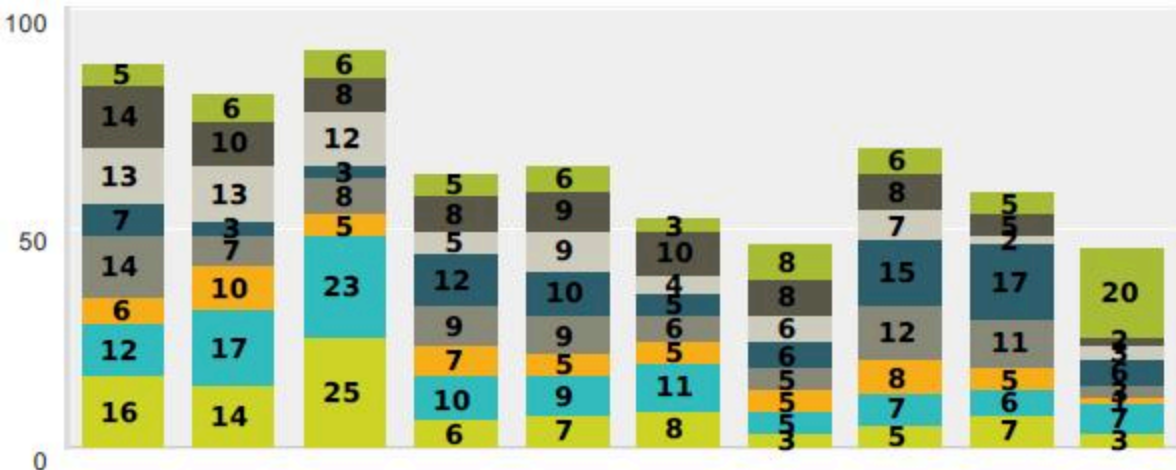


Answered: 285 Skipped: 5



Answered: 140 Skipped: 150





Geography (physical, ...)

Social science (economics, ...)

Humanities (history, ...)

Design or planning

Environmental science

Science

Medicine, health

Information technology

Engineering

Other

■ Professor
 ■ Student
 ■ Research associate, postdoc
 ■ Government
 ■ Business
 ■ Non-profit
 ■ Citizen scholar, hobbyist
 ■ Other

Answered: 282 Skipped: 8

