



Eosinophilic esophagitis: published evidences for disease subtypes, indications for patient subpopulations, and how to translate patient observations to murine experimental models

Citation

Mudde, Anne C. A., Willem S. Lexmond, Richard S. Blumberg, Samuel Nurko, and Edda Fiebiger. 2016. "Eosinophilic esophagitis: published evidences for disease subtypes, indications for patient subpopulations, and how to translate patient observations to murine experimental models." *The World Allergy Organization Journal* 9 (1): 23. doi:10.1186/s40413-016-0114-3. <http://dx.doi.org/10.1186/s40413-016-0114-3>.

Published Version

doi:10.1186/s40413-016-0114-3

Permanent link

<http://nrs.harvard.edu/urn-3:HUL.InstRepos:27822212>

Terms of Use

This article was downloaded from Harvard University's DASH repository, and is made available under the terms and conditions applicable to Other Posted Material, as set forth at <http://nrs.harvard.edu/urn-3:HUL.InstRepos:dash.current.terms-of-use#LAA>

Share Your Story

The Harvard community has made this article openly available. Please share how this access benefits you. [Submit a story](#).

[Accessibility](#)

REVIEW

Open Access



Eosinophilic esophagitis: published evidences for disease subtypes, indications for patient subpopulations, and how to translate patient observations to murine experimental models

Anne C. A. Mudde¹, Willem S. Lexmond¹, Richard S. Blumberg², Samuel Nurko^{1,3,4} and Edda Fiebiger^{1*} 

Abstract

Eosinophilic esophagitis (EoE) is a chronic inflammatory disorder of the esophagus and commonly classified as a Th2-type allergy. Major advances in our understanding of the EoE pathophysiology have recently been made, but clinicians struggle with highly unpredictable therapy responses indicative of phenotypic diversity within the patient population. Here, we summarize evidences for the existence of EoE subpopulations based on diverse inflammatory characteristics of the esophageal tissue in EoE. Additionally, clinical characteristics of EoE patients support the concept of disease subtypes. We conclude that clinical and experimental evidences indicate that EoE is an umbrella term for conditions that are unified by esophageal eosinophilia but that several disease subgroups with various inflammatory esophageal patterns and/or different clinical features exist. We further discuss strategies to study the pathophysiologic differences as observed in EoE patients in murine experimental EoE. Going forward, models of EoE that faithfully mimic EoE subentities as defined in humans will be essential because mechanistic studies on triggers which regulate the onset of diverse EoE subpopulations are not feasible in patients. Understanding how and why different EoE phenotypes develop will be a first and fundamental step to establish strategies that integrate individual variations of the EoE pathology into personalized therapy.

Background

The large number of recent reviews on eosinophilic esophagitis (EoE) illustrates the importance of research on this disease and underlines the great interest that allergists, immunologists, and gastroenterologists have in this condition. Several of the world-leading experts, including (in alphabetical order) Drs. Aceves, Cianferoni, Dellon, Furuta, Liacouras, Oyoshi, Rothenberg, and Spigel, have recently provided detailed overviews on the state of the art in EoE research [1–12]. To avoid redundancy, we will only briefly summarize the diagnostic approaches to identify EoE and the general features of

EoE pathology as we feel is necessary to facilitate the subsequent discussion on emerging evidences for the existence of EoE subpopulations.

EoE is classified as a primary eosinophilic gastrointestinal disorder (EGID) [13]. EGIDs constitute a heterogeneous group of diseases that, in addition to EoE, include eosinophilic gastritis, eosinophilic gastroenteritis, eosinophilic enteritis, and eosinophilic colitis. The unifying hallmark and diagnostic marker of all EGIDs is an eosinophil-rich inflammatory infiltrate of the affected mucosa. The etiology of EGIDs is generally not well understood. Tissue eosinophilia is typically considered to be of unknown origin, but the pathogenesis of all EGIDs appears to involve a complex interplay of genetic predisposition, exposure to food, and/or environmental allergens and Th2-type activation of the immune system [14, 15]. In this review, we focus on EoE because it is

* Correspondence: edda.fiebiger@childrens.harvard.edu

¹Department of Medicine, Harvard Medical School, and Division of Gastroenterology and Nutrition, Boston Children's Hospital, 300 Longwood Avenue, Boston, MA 02115, USA

Full list of author information is available at the end of the article

currently the most commonly diagnosed EGID [13], with a prevalence of 0.5–1 case/1000 persons and an incidence of approximately 1 new case per 10,000 persons per year [16], and is therefore the most extensively studied among the different varieties of EGIDs.

Pathophysiological characteristics of EoE

Diagnostic criteria

EoE is a clinicopathological disease. Quantification of esophageal tissue eosinophils combined with assessment of clinical symptomatology suggestive of esophageal dysfunction remains the gold standard in identifying patients with EoE [9, 17, 18]. The established histological standard for diagnosing EoE is the presence of esophagitis as characterized by >15 eosinophils per high power field in esophageal mucosal biopsies following adequate proton pump inhibitor therapy [17, 19]. EoE is defined as isolated to the esophagus, and all other recognized causes of esophageal eosinophilia must be ruled out prior to diagnosis. It is well acknowledged that this standard diagnostic approach by symptomatology and histology is not only an invasive diagnostic method, as esophageal biopsies are required, but also suffers from poor specificity [20, 21]. Esophageal eosinophilia can be found in other gastrointestinal (GI) disorders, and clinical symptoms associated with EoE are often non-specific, especially in young children [17, 19, 22–27].

In daily practice, distinguishing between EoE and reflux-associated eosinophil infiltration of the esophagus as seen in gastroesophageal reflux disease (GERD) remains particularly difficult, especially since the recent recognition of a new entity: PPI-responsive esophageal eosinophilia (PPI-REE). PPI-REE has similar clinicopathological characteristics to EoE but resolves following high-dose PPI therapy [7, 28–30]. GERD and EoE are not mutually exclusive, and the relationship between GERD, EoE, and PPI-REE is complex and not yet fully understood [31, 32]. In contrast to GERD, EoE pathology appears to be strongly allergen-driven. The comorbidity of allergic diseases ranges from 42 to 93 % in pediatric and 28–86 % in adult EoE patients, which is significantly higher than in GERD patients or the general population [30, 33–36].

Elevated serum IgE is found and used to identify allergen-sensitized EoE individuals that suffer from an IgE-mediated/allergen-driven disease phenotype. However, up to 50 % of EoE patients have normal serum IgE levels and, as defined by consensus using standard serum diagnostic approach, show no evidence for allergic sensitization in serum. In a conclusive opinion piece, it was recently argued that the pathogenesis of EoE is rather distinct from IgE-mediated food allergy [37]. The authors make the point that eosinophilic inflammation appears to be largely independent of IgE although food has been recognized as a trigger factor of EoE. Despite

this recent review, common consensus is that, irrespective of the frequent absence of an allergic serum phenotype, EoE is classified as a Th2-type allergic disease because of its inflammatory esophageal mRNA pattern [19, 25, 38–41]. EoE was recently reviewed in detail from the perspective of the allergist [42]. How various allergic comorbidities potentially influence the EoE pathophysiology will be an important topic to study. The question as to whether EoE exists as an independent allergic/atopic disease or is most frequently found as a secondary manifestation in addition to another allergy needs to be addressed in large, ideally multicenter, cohort studies. Such studies will address important gaps in our understanding of the interplay of allergic conditions, which is commonly referred to as the atopic march. In this context, a recent publication demonstrated that EoE that develops in the context of skin sensitization has very unique features [43]. The type of EoE that develops after allergic sensitization at the skin appears to be critically mediated through the IL-33-ST2-basophil axis. This observation indicates that interference with this immune modulatory axis might provide another opportunity for individualized therapy of EoE provided that the finding can be confirmed in other human EoE cohorts.

Treatment strategies

Clinicians treat EoE to reduce, or ideally resolve, esophageal inflammation and to resolve symptoms. The most commonly used therapeutic strategies for EoE are proton-pump inhibitors, which are also important in the diagnostic phase; topical corticosteroids, most often in the form of swallowed fluticasone or liquid budesonide; and/or dietary interventions. Several dietary strategies are used, such as the six-food elimination diet, targeted food elimination based off allergy testing, and elemental diet therapy. Dilatation of esophageal strictures is also a treatment strategy used to relieve EoE associated symptoms, such as dysphagia; however, it has no effect on inflammation [9]. The reported response rates to either dietary interventions or topical steroids vary greatly from 50 % to >90 %, with the most often reported response rate for commonly used dietary interventions and local steroids being around 70 %. The highest response rates are achieved by treatment with elemental diets; however, this therapy is associated with high costs and low compliance due to unpleasant taste [1, 9, 18, 22, 27, 44–50]. Even though there are studies that have shown benefits from dietary therapy in adults, the therapeutic success of dietary intervention for adult EoE is still debated amongst experts [51].

Evidences for EoE subpopulations

Generally, it is important to stress that the concept of differential disease subphenotypes and subgroups is not

new to allergy research. For asthma, the most common allergic disease, disease subtypes and individualized therapy have, in fact, already been integrated in clinical practice and are known to be beneficial in guiding therapy [52–54]. Basic research strategies have also been established which model different asthma phenotypes and mimic individual patient subpopulations [55]. Little attention has been paid to EoE subtypes in clinical practice so far, and basic research on EoE is only starting to integrate the idea of EoE subtypes into experimental strategies to understand EoE pathophysiology.

EoE patients cluster in subpopulations based on age and clinical characteristics

Clinical presentation of EoE is highly age dependent. Infants tend to suffer from feeding difficulties and failure to thrive. Children typically experience abdominal pain, nausea, vomiting, and heartburn, whereas adolescents and adults tend to present with dysphagia and episodes of food impaction [1, 56]. Recently, new manuscripts describing the adult onset of EoE have been published [26, 57, 58]. The comparative analysis of the roles of IgE and IgG4 in adult EoE showed elevated serum levels of IgG4 with food-specificity in adult EoE patients and a 45-fold increase in IgG4 in homogenates of esophageal specimens from adult EoE patients over controls. In support of the IgE-independence of the adult EoE, no effect of omalizumab, the most commonly used IgE-blocking therapy, was observed [57]. Combined, these results indicate that adult EoE might be IgG4-mediated rather than an IgE-mediated allergy and, therefore, an EoE subpopulation in itself. It is, of course, equally possible that the interplay between antigen-specific IgG4 and IgE signals differentially shapes adult EoE on the cellular level. The topic of IgG4 and IgE in fuelling human allergic diseases was recently discussed in detail and the nature of EoE as a ‘modified Th2-type’ disease was put forward [59]. However, mechanistic explanations remain speculative in the absence of experimental data on the topic.

Proton pump inhibitor-responsive esophageal eosinophilia (PPI-REE) has recently been described [60] and may represent another subtype of EoE. PPI-REE has similar clinicopathological features to EoE, is also an allergic disease, and presents with Th2-associated characteristics comparable to EoE. Furthermore, the molecular transcriptome of PPI-REE and EoE show significant overlap. Current consensus suggests that PPI-REE and EoE have a common pathogenesis and that PPI-REE might constitute a subgroup of EoE [29, 61].

Another recently described phenotype of EoE consists of EoE patients with an extreme narrow-caliber esophagus. This patient group is characterized by a longer symptom duration and a disease phenotype that is rather refractory to steroid treatment [61].

EoE patients and comorbidities

EoE is more prevalent in patients suffering from other disorders. For example, an association between EoE and celiac disease has been suggested. However, contradicting reports are found in the literature, and no mechanistic studies have been performed [62–64]. Additionally, several case reports and case series found a higher prevalence of EoE in children with esophageal atresia [65–68]. Microdeletions encompassing the Forkhead box (FOX) transcription factor gene cluster have been shown to be associated with esophageal atresia. Mouse studies have shown that binding sites for Foxf1, one of the encoded proteins of the FOX gene cluster, include the promoter region of genes for inflammation, such as eotaxin. The expression of eotaxin-3 is known to be increased in patients with EoE. In combination, these results led to the hypothesis that mutations in the FOX gene cluster play a role in the development of esophageal atresia and EoE [64, 69]. Finally, an elevated prevalence of EoE in patients with inherited connective tissue diseases (CTDs), particularly those associated with hypermobility, has been described [7, 64, 70]. It has been proposed that these patients represent a subpopulation, referred to as EoE-CTD, with specific clinical characteristics such as lower BMI and an elevated risk of extra-esophageal eosinophilic gastrointestinal disease. Increased TGF- β signaling has been proposed as a molecular connection between EoE and CTDs [70]. Additionally, association of EoE has been reported with celiac disease in the pediatric population and celiac patients with active disease [62, 71].

EoE patients cluster in subpopulations based on their esophageal inflammatory mRNA pattern

Esophageal tissue inflammation is described to be highly variable within the EoE patient group [7, 24]. Our research group recently confirmed this observation with multiplexed mRNA pattern analysis on esophageal biopsies [72] and classical mRNA pattern studies with qRT-PCR [73, 74]. Importantly, we discovered that EoE patients cluster in subgroups based on their mRNA expression profile, publishing three research articles in which we described EoE subpopulations with distinct inflammatory tissue characteristics [72–74]. The first group, which we here refer to as LTC4S-EoE, is characterized by a more pronounced esophageal Th2-type inflammatory profile including TSLP and is typified by high expression of leukotriene C4 synthase (LTC4S, [74]). Leukotrienes are known to actively contribute to allergic inflammation. Interestingly, esophageal levels of cysteinyl leukotrienes have been described not to differentiate EoE patients from controls [17, 38], and the literature on the effect of leukotriene receptor antagonist therapy in EoE is inconclusive. Several case series ascribe therapeutic benefits to the application of leukotriene receptor antagonists in EoE patients [75–77]. On the other hand,

leukotriene receptor antagonists have also been reported to be ineffective in EoE [78] or only effective in a patient subset [79]. At this point, it is tempting to speculate that the definition of an EoE patient subpopulation that is defined by LTC4S mRNA levels might be a first step to identify individuals that benefit most from treatment with leukotriene receptor antagonists.

Another EoE subgroup is defined by low transcript levels of LTC4S but elevated IL23 transcripts (referred to as IL23-EoE, [74]). IL23 is considered to be associated with Th17 immune responses [80], such as in a severe type of asthma [81–83]. The IL23-EoE phenotype might thus have a more pronounced Th17 phenotype. The latter finding would be in line with the concept that EoE can be a manifestation of asthma in the esophagus [84]. Defining such a subgroup might have significant consequences on patient management since asthma treatment strategies could be considered.

In an independent study, we described another EoE subtype that is associated with an increased CD1d-restricted, invariant chain natural killer T (iNKT) cell compartment (referred to as iNKT-EoE, [73]). Jyonouchi et al. also discusses the role of iNKT cells in EoE, explaining that an iNKT cell-mediated Th2-type cytokine response can lead to allergic inflammation in EoE [85]. Our study found iNKT-EoE to be an early-onset form of EoE, predominantly present in children under six years of age. Interestingly, LTC4S-EoE and iNKT-EoE have overlapping features as these subgroups appeared to present with more food allergy and higher levels of serum IgE. Further subgroup analysis implied that iNKT-EoE patients fall rather uniformly into the LTC4S-EoE group, as these patients also express high levels of LTC4S, suggesting that iNKT-EoE might be a subentity of LTC4S-EoE. This topic deserves integration into the growing discussions about EoE and classical food allergy [86].

The distribution analysis of mRNA expression levels of the mast cell marker carboxypeptidase3 [72, 74] also supports the existence of a subpopulation of MC-EoE patients. Rothenberg and colleagues recently published that in EoE patients, mast cells are associated with dysphagia [87]. In experimental murine EoE, mast cells have been shown to play a role in muscular cell hyperplasia [88]. In addition, it has been suggested that mast cells modulate esophageal contraction by increasing smooth muscle contractility, which could underlie dysphagia [89]. In summary, the precise role of mast cells in EoE warrants further investigation.

Experimental murine eosinophilic esophagitis

Defining clinical subtypes in EoE patients is a first essential step towards establishing novel treatment strategies that take individual variations of the EoE pathology into

account. Going forward, human cohorts might be less useful here because mechanistic studies are hardly feasible in patients.

One perfect example for the problem of doing functional studies that define cause and effect in EoE pathology are studies on the role of the microbial signals for EoE development. Such studies are highly important in view of the recent description of the EoE specific microbiome [90] and the rapidly growing knowledge of the role of microbial signals in allergies of the GI tract [91, 92]. Germ-free humans do not exist and, even in mice, microbiome studies are challenging and highly costly. Irrespective, the use of germ-free murine models provides us with unique opportunities to study the impact of individual microbial strains on the pathology of EoE.

Commonly used strategies to model EoE in mice

Experimental strategies to understand pathophysiologic differences of EoE as seen in patients require murine disease models that phenocopy human EoE and its subtypes in vivo as closely as possible. Using a variety of allergens, diverse types of sensitization, and different types of challenges, several murine models of experimental EoE have been described in the literature. For a conclusive review on the established experimental models of EoE, we refer to Mishra et al [93].

The most commonly used experimental EoE model uses intranasal application of *Aspergillus* in a sensitization/challenge type of model [93, 94]. The esophageal infiltrate in this model contains mast cells. Therefore, the *Aspergillus* model might be well suited to study MC-EoE. Since *Aspergillus* is also a common antigen in asthma, this strategy could also be useful for studying subtypes of EoE that are associated with asthma. In contrast, the combination of peanut antigen and sensitization with aluminum hydroxide as adjuvant (PA/alum) has been established for inducing iNKT cell infiltration in EoE [93, 94]. It is therefore likely that the latter model is best suited to study iNKT-EoE. Presently, no reports on age-dependency of murine EoE models are found in the literature, whereas age-dependency and a role of the microbial signals early in life have been demonstrated for the development of allergic asthma [95].

Using humanized mice to study mucosal allergy – implications for eosinophilic esophagitis

Following the established concept that EoE is, at least in a considerable number of patients, a manifestation of an IgE-mediated allergy, one has to consider that experimental murine EoE needs to be studied in models that faithfully mimic the human IgE network [96]. Importantly, a direct comparison of the murine and human IgE Fc receptor expression profile during the in situ characterization of IgE-binding structures of the human esophagus [97] revealed a

substantial shortcoming of murine models of EoE. We found that FcεRI, the high affinity IgE Fc receptor [96, 98], was the only IgE receptor that was robustly expressed in the esophageal tissue of patients with EoE (Fig. 1 and [97]). Dendritic cells (DCs) and mast cells were the predominant FcεRI expressing cells, while eosinophils hardly expressed FcεRI in the esophagus of EoE patients [97]. Comparative mRNA pattern analysis showed that more DCs and, therefore, also more DC-bound IgE is found in the non-inflamed esophagus than in EoE [72, 73, 97]. Additionally, we found that FcεRI on DCs critically contributes to the cell-bound fraction of the human IgE pool in peripheral blood of EoE patients [97, 99, 100]. In mice, however, DCs do not constitutively express FcεRI and, therefore, cannot form a DC-bound IgE pool in tissue or blood [101, 102]. For a summary of the constitutive expression of FcεRI in humans, see Table 1. In conclusion, it is fair to postulate that murine EoE models fail to faithfully represent the DC-specific fraction of the cell-bound IgE pool as found in EoE patients.

As corroborated by studies from our own laboratory, allergic Th2-type diseases such as EoE are on the list of human conditions that are not fully modeled by the murine

immune system in their complexity [103]. For many years, the inconvenient reality of divergences in human and murine immune responses has prompted investigators to dedicate active research effort to the humanization of mice as summarized and discussed recently by Grisham and colleagues [104]. The use of humanized models in which immune compromised animals are repopulated with human cells has proven problematic for allergy research because such animals do not mount proper IgE responses [104, 105]. Our research group has recently worked on a humanized model in which animals that lack murine major histocompatibility complex class II (MHC II) and instead express human leukocyte antigen DR1 (HLA-DR1) were studied [106]. Importantly, such humanized mice presented with robust serum IgE levels indicative of an improved allergy model [106]. However, the DC-bound IgE pool was not reconstituted in these animals, which renders this model inappropriate for research questions that address the role of IgE in EoE (Fiebiger lab, unpublished observation). As an alternative strategy, our laboratory has established mouse strains in which a transgenic (TG) approach was chosen for the expression of the

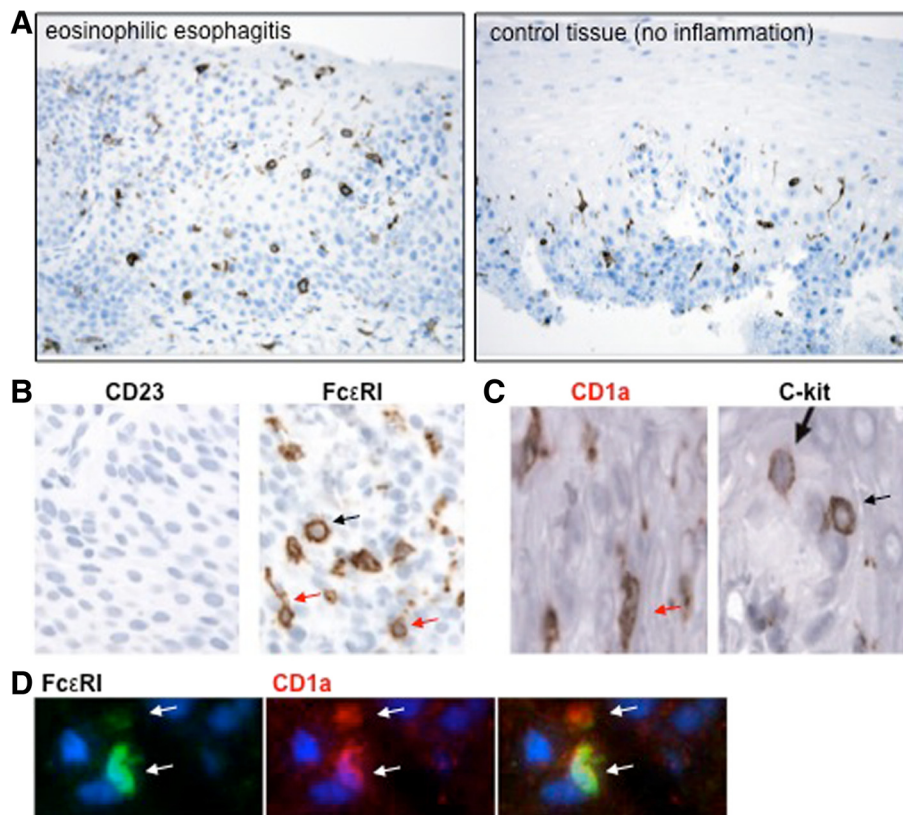


Fig. 1 IgE Fc receptor expression of the human esophagus. **a** Dendritic cells of the esophagus express FcεRI. Anti-FcεRIα staining in esophageal tissue. Left: EoE, right non-inflamed control tissue. **b** Comparative expression analysis of CD23 and FcεRI in EoE tissue. **c** Esophageal dendritic cells (CD1a staining) and esophageal mast cells (C-kit staining). **d** FcεRI/CD1a immune fluorescence histochemistry of the esophagus. Finding originally published in [97, 99, 100]

Table 1 Cellular expression profiles of FcεRI isoforms in humans and wild type mice. Composition of the tetrameric isoform: IgE binding alpha chain, beta and the gamma dimer. Alpha chain contains the IgE binding site. Beta and gamma are the signal transducing subunits. Composition of the tetrameric isoform: IgE binding alpha chain and the gamma dimer. For review see also [96, 107]. Note that only a minor fraction of eosinophils in esophageal tissue of EoE patients expresses FcεRI [97]

	Human FcεRI	Murine FcεRI
Cell type		
Mast cell	αβγ2	αβγ2
Basophils	αβγ2	αβγ2
Dendritic cells	αγ2	–
Eosinophils in tissue	αγ2	–

IgE-binding alpha chain using the DC-specific CD11c promoter. DCs of such mice (referred to as IgE_R-TG mice [101, 107–109]) express FcεRI and are IgE-loaded like their human counterparts [101, 102, 107, 108, 110]. It is important to stress that several of the proposed IgE_R-TG strains are characterized in detail and have been published by our group as well as others.

Research applying IgE_R-TG mice has provided surprising insights into the physiological role of FcεRI-bound IgE in allergy. None of the IgE_R-TG strains developed a spontaneous allergic phenotype, implying that the presence of cell-bound IgE on DCs does not drive the development of allergies, including EoE. Using three independently generated IgE_R-TG strains on two different backgrounds, less severe Th2-type allergic inflammation was found in the TG animals than in their wild-type counterparts, which did not have DC-bound IgE. Experiments with human DCs confirmed that IgE-crosslinking dampens the TLR-ligand-induced production of Th2-promoting cytokines, validating that experiments in the IgE_R-TG mice yield results that are directly relevant for human allergy [107]. Furthermore, FcεRI on human monocytes and DCs has been shown to contribute to IgE clearance [111], substantiating that FcεRI on DCs is regulatory [101, 102]. How immune regulatory IgE-mediated signals operate and/or fail in EoE is currently unknown, and the role of DC-bound IgE in the pathophysiology of EoE has not been addressed experimentally as of yet. Therefore, we propose that IgE_R-TG mice should be used as an improved model for studying mechanisms that regulate allergic IgE-mediated inflammation in EoE and the development of EoE disease subtypes.

Conclusions and future perspectives

Cumulative evidences support the existence of subtypes of EoE. Inflammatory tissue mRNA pattern analysis might be a feasible approach to define certain EoE

patient subpopulations, but more studies are required to validate the approach. Currently, the development of experimental strategies that aim at providing mechanistic insights into cellular and molecular pathways that regulate the development of EoE subtypes are highly important. New insights into mechanisms responsible for the manifestation of diverse pathologies are a prerequisite to establish the concept of different EoE subtypes more convincingly. Research efforts along this line will lead to improved understanding of causative triggers for EoE, in general, and more specifically of factors that define individual EoE subtypes. A better understanding of diverse EoE pathologies, in turn, has the potential to direct the development of new therapeutic approaches with a focus on individualized patient therapy.

Abbreviations

CTDs, connective tissue diseases; DCs, dendritic cells; EGID, eosinophilic gastrointestinal disorder; EoE, eosinophilic esophagitis; FcεRI, high affinity IgE Fc receptor; GERD, gastroesophageal reflux disease; IgE_R-TG, FcεRI transgenic; iNKT, invariant natural killer T cell; MC, mast cells; PPI-REE, PPI-responsive esophageal eosinophilia

Acknowledgments

This work was supported by the Gerber Foundation (SN and EF), National Institutes of Health Grants R01AI075037 (EF) and K24DK82792-1 (SN), and the Research Council at Boston Children's Hospital (SN and EF). The Fiebiger lab is further supported by grants from Mead Johnson Nutrition Co (post doctoral fellowship to WSL and unrestricted research grant to EF). This work was also supported by the Harvard Digestive Diseases Center Grant P30 DK034854.

We would like to thank all members of the Fiebiger lab for helpful discussions. A special thank you goes to Barbara Platzer and Madeleine M. Stout for their critical suggestions. We apologize to all colleagues in the field of EGID research whose work was not cited in this manuscript for reasons of space limitation.

Availability of data and materials

Not applicable for this review because we only cite primary peer reviewed publications, which are available on PubMed.

Authors' contributions

EF and AM developed the concept for this review. AM led the development and coordination of the project. AM and EF wrote the first version of the manuscript; SN, WSL and RB were sub-editors on the clinical characteristics of the disease. WSL and RB contributed to the animal model section. AM, WSL, and EF prepared the table and figure. All authors read and approved the final manuscript.

Competing interests

The authors declare that they have no competing interests.

Consent for publication

Not applicable for this review.

Ethics approval and consent to participate

Not applicable for this review.

Author details

¹Department of Medicine, Harvard Medical School, and Division of Gastroenterology and Nutrition, Boston Children's Hospital, 300 Longwood Avenue, Boston, MA 02115, USA. ²Division of Gastroenterology, Hepatology, and Endoscopy, Brigham and Women's Hospital, Harvard Medical School, Boston, MA, USA. ³Center for Motility and Functional Gastrointestinal Disorders, Boston, MA, USA. ⁴Eosinophilic Gastrointestinal Disease Center, Boston Children's Hospital, Boston, MA, USA.

Received: 7 March 2016 Accepted: 1 July 2016

Published online: 15 July 2016

References

- Furuta GT, Katzka DA. Eosinophilic esophagitis. *N Engl J Med*. 2015;373:1640–8.
- Oyoshi MK. Recent research advances in eosinophilic esophagitis. *Curr Opin Pediatr*. 2015;27:741–7.
- Cianferoni A, Spergel J. Eosinophilic esophagitis: a comprehensive review. *Clin Rev Allergy Immunol*. 2015;50:159–74.
- Cianferoni A, Spergel JM. From genetics to treatment of eosinophilic esophagitis. *Curr Opin Allergy Clin Immunol*. 2015;15:417–25.
- Cianferoni A, Spergel JM. Eosinophilic esophagitis and gastroenteritis. *Curr Allergy Asthma Rep*. 2015;15:58.
- Cianferoni A, Spergel JM, Muir A. Recent advances in the pathological understanding of eosinophilic esophagitis. *Expert Rev Gastroenterol Hepatol*. 2015;9:1501–10.
- Rothenberg ME. Molecular, genetic, and cellular bases for treating eosinophilic esophagitis. *Gastroenterology*. 2015;148:1143–57.
- Aceves SS. Eosinophilic esophagitis. *Immunol Allergy Clin North Am*. 2015;35:145–59.
- Dellon ES, Liacouras CA. Advances in clinical management of eosinophilic esophagitis. *Gastroenterology*. 2014;147:1238–54.
- Green DJ, Cotton CC, Dellon ES. The role of environmental exposures in the etiology of eosinophilic esophagitis: a systematic review. *Mayo Clin Proc*. 2015;90:1400–10.
- Davis BP, Rothenberg ME. Mechanisms of disease of eosinophilic esophagitis. *Annu Rev Pathol*. 2016;11:365–93.
- Collins MH, Martin LJ, Alexander ES, Boyd JT, Sheridan R, He H, Pentiu S, Putnam PE, Abonia JP, Mukkada VA, et al. Newly developed and validated eosinophilic esophagitis histology scoring system and evidence that it outperforms peak eosinophil count for disease diagnosis and monitoring. *Dis Esophagus*. 2016. doi:10.1111/dote.12470.
- Gonsalves N, Furuta GT, Atkins D. Eosinophilic gastrointestinal disorders affect more than just the esophagus. *J Pediatr Gastroenterol Nutr*. 2015;62:1–2.
- Masterson JC, Furuta GT, Lee JJ. Update on clinical and immunological features of eosinophilic gastrointestinal diseases. *Curr Opin Gastroenterol*. 2011;27:515–22.
- Mikhail I, Sampson H. Eosinophilic gastrointestinal diseases. *J Allergy Clin Immunol Pract*. 2016;4:369–70.
- Dellon ES. Diagnostics of eosinophilic esophagitis: clinical, endoscopic, and histologic pitfalls. *Dig Dis*. 2014;32:48–53.
- Liacouras CA, Furuta GT, Hirano I, Atkins D, Attwood SE, Bonis PA, Burks AW, Chehade M, Collins MH, Dellon ES, et al. Eosinophilic esophagitis: updated consensus recommendations for children and adults. *J Allergy Clin Immunol*. 2011;128:3–20. e26; quiz 21–22.
- Dellon ES, Gonsalves N, Hirano I, Furuta GT, Liacouras CA, Katzka DA, American College of G. ACG clinical guideline: evidenced based approach to the diagnosis and management of esophageal eosinophilia and eosinophilic esophagitis (EoE). *Am J Gastroenterol*. 2013;108:679–92. quiz 693.
- Liacouras CA. Clinical presentation and treatment of pediatric patients with eosinophilic esophagitis. *Gastroenterol Hepatol (N Y)*. 2011;7:264–7.
- Muir AB, Merves J, Liacouras CA. Role of endoscopy in diagnosis and management of pediatric eosinophilic esophagitis. *Gastrointest Endosc Clin N Am*. 2016;26:187–200.
- Miehlke S, Hruz P, Vieth M, Bussmann C, von Arnim U, Bajbouj M, Schlag C, Madisch A, Fibbe C, Wittenburg H, et al. A randomised, double-blind trial comparing budesonide formulations and dosages for short-term treatment of eosinophilic oesophagitis. *Gut*. 2015;65:390–9.
- Caldwell JM, Blanchard C, Collins MH, Putnam PE, Kaul A, Aceves SS, Bouska CA, Rothenberg ME. Glucocorticoid-regulated genes in eosinophilic esophagitis: a role for FKBP51. *J Allergy Clin Immunol*. 2010;125:879–88. e878.
- Konikoff MR, Blanchard C, Kirby C, Buckmeier BK, Cohen MB, Heubi JE, Putnam PE, Rothenberg ME. Potential of blood eosinophils, eosinophil-derived neurotoxin, and eotaxin-3 as biomarkers of eosinophilic esophagitis. *Clin Gastroenterol Hepatol*. 2006;4:1328–36.
- Dellon ES. Epidemiology of eosinophilic esophagitis. *Gastroenterol Clin North Am*. 2014;43:201–18.
- Travers J, Rothenberg ME. Eosinophils in mucosal immune responses. *Mucosal Immunol*. 2015;8:464–75.
- Schlag C, Miehlke S, Heiseke A, Brockow K, Krug A, von Arnim U, Straumann A, Vieth M, Bussmann C, Mueller R, et al. Peripheral blood eosinophils and other non-invasive biomarkers can monitor treatment response in eosinophilic oesophagitis. *Aliment Pharmacol Ther*. 2015;42:1122–30.
- Singla MB, Moawad FJ. An overview of the diagnosis and management of eosinophilic esophagitis. *Clin Transl Gastroenterol*. 2016;7:e155.
- Asher Wolf W, Dellon ES. Eosinophilic esophagitis and proton pump inhibitors: controversies and implications for clinical practice. *Gastroenterol Hepatol (N Y)*. 2014;10:427–32.
- Wen T, Dellon ES, Moawad FJ, Furuta GT, Aceves SS, Rothenberg ME. Transcriptome analysis of proton pump inhibitor-responsive esophageal eosinophilia reveals proton pump inhibitor-reversible allergic inflammation. *J Allergy Clin Immunol*. 2015;135:187–97.
- Liacouras CA, Spergel J, Guber LM. Eosinophilic esophagitis: clinical presentation in children. *Gastroenterol Clin North Am*. 2014;43:219–29.
- Cheng E, Souza RF, Spechler SJ. Eosinophilic esophagitis: interactions with gastroesophageal reflux disease. *Gastroenterol Clin North Am*. 2014;43:243–56.
- Spechler SJ, Genta RM, Souza RF. Thoughts on the complex relationship between gastroesophageal reflux disease and eosinophilic esophagitis. *Am J Gastroenterol*. 2007;102:1301–6.
- Straumann A, Schoepfer AM. Therapeutic concepts in adult and paediatric eosinophilic oesophagitis. *Nat Rev Gastroenterol Hepatol*. 2012;9:697–704.
- Liacouras CA, Spergel JM, Ruchelli E, Verma R, Mascarenhas M, Semeao E, Flick J, Kelly J, Brown-Whitehorn T, Mamula P, Markowitz JE. Eosinophilic esophagitis: a 10-year experience in 381 children. *Clin Gastroenterol Hepatol*. 2005;3:198–206.
- Roy-Ghanta S, Larosa DF, Katzka DA. Atopic characteristics of adult patients with eosinophilic esophagitis. *Clin Gastroenterol Hepatol*. 2008;6:531–5.
- Spergel JM, Andrews T, Brown-Whitehorn TF, Beausoleil JL, Liacouras CA. Treatment of eosinophilic esophagitis with specific food elimination diet directed by a combination of skin prick and patch tests. *Ann Allergy Asthma Immunol*. 2005;95:336–43.
- Simon D, Cianferoni A, Spergel JM, Aceves S, Holbreich M, Venter C, Rothenberg ME, Terreehorst I, Muraro A, Lucendo AJ, et al. Eosinophilic esophagitis is characterized by a non-IgE-mediated food hypersensitivity. *Allergy*. 2016;71:611–20.
- Furuta GT, Liacouras CA, Collins MH, Gupta SK, Justinich C, Putnam PE, Bonis P, Hassall E, Straumann A, Rothenberg ME. First International Gastrointestinal Eosinophil Research Symposium S. Eosinophilic esophagitis in children and adults: a systematic review and consensus recommendations for diagnosis and treatment. *Gastroenterology*. 2007;133:1342–63.
- Noti M, Wojno ED, Kim BS, Siracusa MC, Giacomini PR, Nair MG, Benitez AJ, Ruymann KR, Muir AB, Hill DA, et al. Thymic stromal lymphopoietin-elicited basophil responses promote eosinophilic esophagitis. *Nat Med*. 2013;19:1005–13.
- Blanchard C, Wang N, Rothenberg ME. Eosinophilic esophagitis: pathogenesis, genetics, and therapy. *J Allergy Clin Immunol*. 2006;118:1054–9.
- Blanchard C, Wang N, Stringer KF, Mishra A, Fulkerson PC, Abonia JP, Jameson SC, Kirby C, Konikoff MR, Collins MH, et al. Eotaxin-3 and a uniquely conserved gene-expression profile in eosinophilic esophagitis. *J Clin Invest*. 2006;116:536–47.
- Spergel JM. An allergist's perspective to the evaluation of eosinophilic esophagitis. *Best Pract Res Clin Gastroenterol*. 2015;29:771–81.
- Venturelli N, Lexmond WS, Ohsaki A, Nurko S, Karasuyama H, Fiebiger E, Oyoshi MK. Allergic skin sensitization promotes eosinophilic esophagitis through the IL-33-basophil axis in mice. *J Allergy Clin Immunol*. 2016. doi: 10.1016/j.jaci.2016.02.034.
- Straumann A. Medical therapy in eosinophilic oesophagitis. *Best Pract Res Clin Gastroenterol*. 2015;29:805–14.
- Arias A, Lucendo AJ. Dietary therapies for eosinophilic esophagitis. *Expert Rev Clin Immunol*. 2014;10:133–42.
- Lucendo AJ, Arias A, Gonzalez-Cervera J, Yague-Compadre JL, Guagnozzi D, Angueira T, Jimenez-Contreras S, Gonzalez-Castillo S, Rodriguez-Dominguez B, De Rezende LC, Tenias JM. Empiric 6-food elimination diet induced and maintained prolonged remission in patients with adult eosinophilic esophagitis: a prospective study on the food cause of the disease. *J Allergy Clin Immunol*. 2013;131:797–804.
- Leung J, Mehrzad R, Hundal NV, Alejos A, Hesterberg PE, Katz AJ, Yuan Q, Shreffler WG. Longitudinal perspective on managing refractory eosinophilic esophagitis. *J Allergy Clin Immunol Pract*. 2015;3:951–6.

48. Gonsalves N, Kagalwalla AF. Dietary treatment of eosinophilic esophagitis. *Gastroenterol Clin North Am.* 2014;43:375–83.
49. Konikoff MR, Noel RJ, Blanchard C, Kirby C, Jameson SC, Buckmeier BK, Akers R, Cohen MB, Collins MH, Assaad AH, et al. A randomized, double-blind, placebo-controlled trial of fluticasone propionate for pediatric eosinophilic esophagitis. *Gastroenterology.* 2006;131:1381–91.
50. Gonzalez-Cervera J, Lucendo AJ. Eosinophilic esophagitis: an evidence-based approach to therapy. *J Investig Allergol Clin Immunol.* 2016;26:8–18. quiz 12p following 18.
51. Arias A, Gonzalez-Cervera J, Tenias JM, Lucendo AJ. Efficacy of dietary interventions for inducing histologic remission in patients with eosinophilic esophagitis: a systematic review and meta-analysis. *Gastroenterology.* 2014;146:1639–48.
52. Gauthier M, Ray A, Wenzel SE. Evolving concepts of asthma. *Am J Respir Crit Care Med.* 2015;192:660–8.
53. Fajt ML, Wenzel SE. Asthma phenotypes and the use of biologic medications in asthma and allergic disease: the next steps toward personalized care. *J Allergy Clin Immunol.* 2015;135:299–310. quiz 311.
54. Ray A, Oriss TB, Wenzel SE. Emerging molecular phenotypes of asthma. *Am J Physiol Lung Cell Mol Physiol.* 2015;308:L130–40.
55. Shin YS, Takeda K, Gelfand EW. Understanding asthma using animal models. *Allergy, Asthma Immunol Res.* 2009;1:10–8.
56. Straumann A, Aceves SS, Blanchard C, Collins MH, Furuta GT, Hirano I, Schoepfer AM, Simon D, Simon HU. Pediatric and adult eosinophilic esophagitis: similarities and differences. *Allergy.* 2012;67:477–90.
57. Clayton F, Fang JC, Gleich GJ, Lucendo AJ, Olalla JM, Vinson LA, Lowichik A, Chen X, Emerson L, Cox K, et al. Eosinophilic esophagitis in adults is associated with IgG4 and not mediated by IgE. *Gastroenterology.* 2014;147:602–9.
58. Safroneeva E, Straumann A, Coslovsky M, Zwahlen M, Kuehni CE, Panczak R, Haas NA, Alexander JA, Dellon ES, Gonsalves N, et al. Symptoms have modest accuracy in detecting endoscopic and histologic remission in adults with eosinophilic esophagitis. *Gastroenterology.* 2015;150:581–90.
59. Aalberse RC, Platts-Mills TA, Rispens T. The Developmental history of IgE and IgG4 antibodies in relation to atopy, eosinophilic esophagitis, and the modified TH2 response. *Curr Allergy Asthma Rep.* 2016;16:45.
60. Ngo P, Furuta GT, Antonioli DA, Fox VL. Eosinophils in the esophagus—peptic or allergic eosinophilic esophagitis? Case series of three patients with esophageal eosinophilia. *Am J Gastroenterol.* 2006;101:1666–70.
61. Eluri S, Dellon ES. Proton pump inhibitor-responsive oesophageal eosinophilia and eosinophilic esophagitis: more similarities than differences. *Curr Opin Gastroenterol.* 2015;31:309–15.
62. Jensen ET, Eluri S, Lebowitz B, Genta RM, Dellon ES. Increased risk of esophageal eosinophilia and eosinophilic esophagitis in patients with active celiac disease on biopsy. *Clin Gastroenterol Hepatol.* 2015;13:1426–31.
63. Lucendo AJ, Arias A, Tenias JM. Systematic review: the association between eosinophilic esophagitis and coeliac disease. *Aliment Pharmacol Ther.* 2014;40:422–34.
64. Lucendo AJ. Disease associations in eosinophilic oesophagitis and esophageal eosinophilia. *Best Pract Res Clin Gastroenterol.* 2015;29:759–69.
65. Dhaliwal J, Tobias J, Sugo E, Varjavandi V, Lemberg D, Day A, Bohane T, Ledder O, Jiwane A, Adams S, et al. Eosinophilic esophagitis in children with esophageal atresia. *Dis Esophagus.* 2014;27:340–7.
66. Oliveira C, Zamakhshary M, Marcon P, Kim PC. Eosinophilic esophagitis and intermediate esophagitis after tracheoesophageal fistula repair: a case series. *J Pediatr Surg.* 2008;43:810–4.
67. Batres LA, Liacouras C, Schnauffer L, Mascarenhas MR. Eosinophilic esophagitis associated with anastomotic strictures after esophageal atresia repair. *J Pediatr Gastroenterol Nutr.* 2002;35:224–6.
68. Kassabian S, Baez-Socorro V, Sfera T, Garcia R. Eosinophilic esophagitis in patients with esophageal atresia and chronic dysphagia. *World J Gastroenterol.* 2014;20:18038–43.
69. Gorter RR, Heij HA, van der Voorn JP, Kneepkens CM. Eosinophilic esophagitis after esophageal atresia: is there an association? Case presentation and literature review. *J Pediatr Surg.* 2012;47:e9–13.
70. Abonia JP, Wen T, Stucke EM, Grotjan T, Griffith MS, Kemme KA, Collins MH, Putnam PE, Franciosi JP, von Tiehl KF, et al. High prevalence of eosinophilic esophagitis in patients with inherited connective tissue disorders. *J Allergy Clin Immunol.* 2013;132:378–86.
71. Dharmaraj R, Hagglund K, Lyons H. Eosinophilic esophagitis associated with celiac disease in children. *BMC Res Notes.* 2015;8:263.
72. Lexmond WS, Hu L, Pardo M, Heinz N, Rooney K, LaRosa J, Dehlink E, Fiebiger E, Nurko S. Accuracy of digital mRNA profiling of oesophageal biopsies as a novel diagnostic approach to eosinophilic oesophagitis. *Clin Exp Allergy.* 2015;45:1317–27.
73. Lexmond WS, Neves JF, Nurko S, Olszak T, Exley MA, Blumberg RS, Fiebiger E. Involvement of the iNKT cell pathway is associated with early-onset eosinophilic esophagitis and response to allergen avoidance therapy. *Am J Gastroenterol.* 2014;109:646–57.
74. Lexmond WS, Pardo M, Rooney K, Goettel JA, Snapper SB, Yen EH, Dehlink E, Nurko S, Fiebiger E. Elevated levels of leukotriene C4 synthase mRNA distinguish a subpopulation of eosinophilic oesophagitis patients. *Clin Exp Allergy.* 2013;43:902–13.
75. Neustrom MR, Friesen C. Treatment of eosinophilic gastroenteritis with montelukast. *J Allergy Clin Immunol.* 1999;104:506.
76. Attwood SE, Lewis CJ, Bronder CS, Morris CD, Armstrong GR, Whittam J. Eosinophilic oesophagitis: a novel treatment using montelukast. *Gut.* 2003;52:181–5.
77. Vanderhoof JA, Young RJ, Hanner TL, Kettlehut B. Montelukast: use in pediatric patients with eosinophilic gastrointestinal disease. *J Pediatr Gastroenterol Nutr.* 2003;36:293–4.
78. Lucendo AJ, De Rezende LC, Jimenez-Contreras S, Yague-Compadre JL, Gonzalez-Cervera J, Mota-Huertas T, Guagnozzi D, Angueira T, Gonzalez-Castillo S, Arias A. Montelukast was inefficient in maintaining steroid-induced remission in adult eosinophilic esophagitis. *Dig Dis Sci.* 2011;56:3551–8.
79. Stumphy J, Al-Zubeidi D, Guerin L, Mitros F, Rahhal R. Observations on use of montelukast in pediatric eosinophilic esophagitis: insights for the future. *Dis Esophagus.* 2011;24:229–34.
80. Toussiot E. The IL23/Th17 pathway as a therapeutic target in chronic inflammatory diseases. *Inflamm Allergy Drug Targets.* 2012;11:159–68.
81. Cosmi L, Liotta F, Annunziato F. Th17 regulating lower airway disease. *Curr Opin Allergy Clin Immunol.* 2015;16:1–6.
82. Chesne J, Braza F, Mahay G, Brouard S, Aronica M, Magnan A. IL-17 in severe asthma. Where do we stand? *Am J Respir Crit Care Med.* 2014;190:1094–101.
83. Pelaia G, Vatrella A, Busceti MT, Gallelli L, Calabrese C, Terracciano R, Maselli R. Cellular mechanisms underlying eosinophilic and neutrophilic airway inflammation in asthma. *Mediators Inflamm.* 2015;2015:879783.
84. Sampson HA, Aceves S, Bock SA, James J, Jones S, Lang D, Nadeau K, Nowak-Wegrzyn A, Oppenheimer J, Perry TT, et al. Food allergy: a practice parameter update-2014. *J Allergy Clin Immunol.* 2014;134:1016–25. e1043.
85. Jyonouchi S, Smith CL, Saretta F, Abraham V, Ruymann KR, Modayur-Chandramouleeswaran P, Wang ML, Spergel JM, Cianferoni A. Invariant natural killer T cells in children with eosinophilic esophagitis. *Clin Exp Allergy.* 2014;44:58–68.
86. Chehade M, Aceves SS, Furuta GT, Fleischer DM. Food allergy and eosinophilic esophagitis: what do we do? *J Allergy Clin Immunol Pract.* 2015;3:25–32.
87. Martin LJ, Franciosi JP, Collins MH, Abonia JP, Lee JJ, Hommel KA, Varni JW, Grotjan JT, Eby M, He H, et al. Pediatric Eosinophilic Esophagitis Symptom Scores (PEESS v2.0) identify histologic and molecular correlates of the key clinical features of disease. *J Allergy Clin Immunol.* 2015;135:1519–28. e1518.
88. Niranjan R, Mavi P, Rayapudi M, Dynda S, Mishra A. Pathogenic role of mast cells in experimental eosinophilic esophagitis. *Am J Physiol Gastrointest Liver Physiol.* 2013;304:G1087–94.
89. Aceves SS, Chen D, Newbury RO, Dohil R, Bastian JF, Broide DH. Mast cells infiltrate the esophageal smooth muscle in patients with eosinophilic esophagitis, express TGF-beta1, and increase esophageal smooth muscle contraction. *J Allergy Clin Immunol.* 2010;126:1198–204. e1194.
90. Harris JK, Fang R, Wagner BD, Choe HN, Kelly CJ, Schroeder S, Moore W, Stevens MJ, Yeckes A, Amsden K, et al. Esophageal microbiome in eosinophilic esophagitis. *PLoS One.* 2015;10:e0128346.
91. Berni Canani R, Gilbert JA, Nagler CR. The role of the commensal microbiota in the regulation of tolerance to dietary allergens. *Curr Opin Allergy Clin Immunol.* 2015;15:243–9.
92. Feehley T, Nagler CR. Cellular and molecular pathways through which commensal bacteria modulate sensitization to dietary antigens. *Curr Opin Immunol.* 2014;31:79–86.
93. Mishra A. Significance of mouse models in dissecting the mechanism of human Eosinophilic Gastrointestinal Diseases (EGID). *J Gastroenterol Hepatol Res.* 2013;2:845–53.
94. Mishra A, Hogan SP, Brandt EB, Rothenberg ME. An etiological role for aeroallergens and eosinophils in experimental esophagitis. *J Clin Invest.* 2001;107:83–90.

95. Olszak T, An D, Zeissig S, Vera MP, Richter J, Franke A, Glickman JN, Siebert R, Baron RM, Kasper DL, Blumberg RS. Microbial exposure during early life has persistent effects on natural killer T cell function. *Science*. 2012;336:489–93.
96. Gould HJ, Sutton BJ. IgE in allergy and asthma today. *Nat Rev Immunol*. 2008;8:205–17.
97. Yen EH, Hornick JL, Dehlink E, Dokter M, Baker A, Fiebiger E, Nurko S. Comparative analysis of FcepsilonRI expression patterns in patients with eosinophilic and reflux esophagitis. *J Pediatr Gastroenterol Nutr*. 2010;51:584–92.
98. Kraft S, Kinet JP. New developments in FcepsilonRI regulation, function and inhibition. *Nat Rev Immunol*. 2007;7:365–78.
99. Bannert C, Bidmon-Fliegenschnee B, Stary G, Hotzy F, Stift J, Nurko S, Szepefalusi Z, Fiebiger E, Dehlink E. Fc-epsilon-RI, the high affinity IgE-receptor, is robustly expressed in the upper gastrointestinal tract and modulated by mucosal inflammation. *PLoS One*. 2012;7:e42066.
100. Dehlink E, Baker AH, Yen E, Nurko S, Fiebiger E. Relationships between levels of serum IgE, cell-bound IgE, and IgE-receptors on peripheral blood cells in a pediatric population. *PLoS One*. 2010;5:e12204.
101. Platzer B, Stout M, Fiebiger E. Functions of dendritic-cell-bound IgE in allergy. *Mol Immunol*. 2015;68:116–9.
102. Shin JS, Greer AM. The role of FcepsilonRI expressed in dendritic cells and monocytes. *Cell Mol Life Sci*. 2015;72:2349–60.
103. Seung E, Tager AM. Humoral immunity in humanized mice: a work in progress. *J Infect Dis*. 2013;208 Suppl 2:S155–9.
104. Koboziev I, Jones-Hall Y, Valentine JF, Webb CR, Furr KL, Grisham MB. Use of humanized mice to study the pathogenesis of autoimmune and inflammatory diseases. *Inflamm Bowel Dis*. 2015;21:1652–73.
105. Weigmann B, Schughart N, Wiebe C, Sudowe S, Lehr HA, Jonuleit H, Vogel L, Becker C, Neurath MF, Grabbe S, et al. Allergen-induced IgE-dependent gut inflammation in a human PBMC-engrafted murine model of allergy. *J Allergy Clin Immunol*. 2012;129:1126–35.
106. Goettel JA, Biswas S, Lexmond WS, Yeste A, Passerini L, Patel B, Yang S, Sun J, Ouahed J, Shouval DS, et al. Fatal autoimmunity in mice reconstituted with human hematopoietic stem cells encoding defective FOXP3. *Blood*. 2015;125:3886–95.
107. Platzer B, Baker K, Vera MP, Singer K, Panduro M, Lexmond WS, Turner D, Vargas SO, Kinet JP, Maurer D, et al. Dendritic cell-bound IgE functions to restrain allergic inflammation at mucosal sites. *Mucosal Immunol*. 2015;8: 516–32.
108. Platzer B, Elpek KG, Cremasco V, Baker K, Stout MM, Schultz C, Dehlink E, Shade KT, Anthony RM, Blumberg RS, et al. IgE/FcepsilonRI-mediated antigen cross-presentation by dendritic cells enhances anti-tumor immune responses. *Cell Rep*. 2015. doi:10.1016/j.celrep.2015.02.015.
109. Platzer B, Rüter F, van der Mee J, Fiebiger E. Soluble IgE receptors—elements of the IgE network. *Immunol Lett*. 2011;141:36–44.
110. Vasudev M, Cheung DS, Pincsak H, Li SH, Yan K, Simpson P, Dasu T, Grayson MH. Expression of high-affinity IgE receptor on human peripheral blood dendritic cells in children. *PLoS One*. 2012;7:e32556.
111. Greer AM, Wu N, Putnam AL, Woodruff PG, Wolters P, Kinet JP, Shin JS. Serum IgE clearance is facilitated by human FcepsilonRI internalization. *J Clin Invest*. 2014;124:1187–98.

Submit your next manuscript to BioMed Central and we will help you at every step:

- We accept pre-submission inquiries
- Our selector tool helps you to find the most relevant journal
- We provide round the clock customer support
- Convenient online submission
- Thorough peer review
- Inclusion in PubMed and all major indexing services
- Maximum visibility for your research

Submit your manuscript at
www.biomedcentral.com/submit

