



Metabolomic Profiling in Individuals with a Failing Kidney Allograft

Citation

Bassi, R., M. A. Niewczas, L. Biancone, S. Bussolino, S. Merugumala, S. Tezza, F. D'Addio, et al. 2017. "Metabolomic Profiling in Individuals with a Failing Kidney Allograft." PLoS ONE 12 (1): e0169077. doi:10.1371/journal.pone.0169077. <http://dx.doi.org/10.1371/journal.pone.0169077>.

Published Version

[doi:10.1371/journal.pone.0169077](https://doi.org/10.1371/journal.pone.0169077)

Permanent link

<http://nrs.harvard.edu/urn-3:HUL.InstRepos:30371180>

Terms of Use

This article was downloaded from Harvard University's DASH repository, and is made available under the terms and conditions applicable to Other Posted Material, as set forth at <http://nrs.harvard.edu/urn-3:HUL.InstRepos:dash.current.terms-of-use#LAA>

Share Your Story

The Harvard community has made this article openly available.
Please share how this access benefits you. [Submit a story](#).

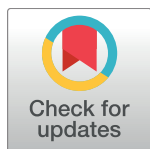
[Accessibility](#)

RESEARCH ARTICLE

Metabolomic Profiling in Individuals with a Failing Kidney Allograft

Roberto Bassi^{1,2}, Monika A. Niewczas³, Luigi Biancone⁴, Stefania Bussolino⁴, Sai Merugumala⁵, Sara Tezza¹, Francesca D'Addio^{1,2}, Moufida Ben Nasr¹, Alessandro Valderrama-Vasquez², Vera Usueli², Valentina De Zan⁶, Basset El Essawy⁷, Massimo Venturini⁸, Antonio Secchi^{2,6}, Francesco De Cobelli^{6,8}, Alexander Lin⁹, Anil Chandraker¹⁰, Paolo Fiorina^{1,2*}

1 Nephrology Division, Boston Children's Hospital, Harvard Medical School, Boston, MA, United States of America, **2** Transplant Medicine, IRCCS Ospedale San Raffaele, Milan, Italy, **3** Section on Genetics and Epidemiology, Joslin Diabetes Center, Harvard Medical School, Boston, MA, United States of America, **4** San Giovanni Battista Hospital and University of Turin, Division of Nephrology, Dialysis, and Transplantation, Turin, Italy, **5** Biomedical Engineering, University of Texas, Austin, TX, United States of America, **6** Università Vita-Salute San Raffaele, Milan, Italy, **7** Medicine, Al-Azhar University, Cairo, Egypt, **8** Radiology, San Raffaele Scientific Institute, Milan, Italy, **9** Center for Clinical Spectroscopy, Department of Radiology, Brigham and Women's Hospital, Harvard Medical School, Boston, MA, United States of America, **10** Transplantation Research Center, Brigham and Women's Hospital, Harvard Medical School, Boston, MA, United States of America



OPEN ACCESS

Citation: Bassi R, Niewczas MA, Biancone L, Bussolino S, Merugumala S, Tezza S, et al. (2017) Metabolomic Profiling in Individuals with a Failing Kidney Allograft. PLoS ONE 12(1): e0169077. doi:10.1371/journal.pone.0169077

Editor: Valquiria Bueno, Universidade Federal de Sao Paulo, BRAZIL

Received: April 18, 2016

Accepted: December 12, 2016

Published: January 4, 2017

Copyright: © 2017 Bassi et al. This is an open access article distributed under the terms of the [Creative Commons Attribution License](https://creativecommons.org/licenses/by/4.0/), which permits unrestricted use, distribution, and reproduction in any medium, provided the original author and source are credited.

Data Availability Statement: All relevant data are within the paper and its Supporting Information files.

Funding: This work was supported by a AST Genentech/Novartis Clinical Science Fellowship grant to RB and an Italian Society of Diabetes (AMD-SID) Pasquale di Coste Award to RB. RB was supported by a JDRF Post-Doctoral Research Fellowship grant. MAN received a JDRF Career Development Award (5-CDA-2015-89-A-B). PF was supported by an American Heart Association (AHA) Grant-In-Aid and the Italian Ministry of Health

☯ These authors contributed equally to this work.
* paolo.fiorina@childrens.harvard.edu

Abstract

Background

Alteration of certain metabolites may play a role in the pathophysiology of renal allograft disease.

Methods

To explore metabolomic abnormalities in individuals with a failing kidney allograft, we analyzed by liquid chromatography-mass spectrometry (LC-MS/MS; for *ex vivo* profiling of serum and urine) and two dimensional correlated spectroscopy (2D COSY; for *in vivo* study of the kidney graft) 40 subjects with varying degrees of chronic allograft dysfunction stratified by tertiles of glomerular filtration rate (GFR; T1, T2, T3). Ten healthy non-allograft individuals were chosen as controls.

Results

LC-MS/MS analysis revealed a dose-response association between GFR and serum concentration of tryptophan, glutamine, dimethylarginine isomers (asymmetric [A]DMA and symmetric [S]DMA) and short-chain acylcarnitines (C4 and C12), (test for trend: T1-T3 = $p < 0.05$; $p = 0.01$; $p < 0.001$; $p = 0.01$; $p = 0.01$; $p < 0.05$, respectively). The same association was found between GFR and urinary levels of histidine, DOPA, dopamine, carnosine, SDMA and ADMA (test for trend: T1-T3 = $p < 0.05$; $p < 0.01$; $p = 0.001$; $p < 0.05$; $p = 0.001$; $p < 0.001$; $p < 0.01$, respectively). *In vivo* 2D COSY of the kidney allograft revealed significant

(grant RF-2010-2303119). PF also received support from the EFSD/Sanofi European Research Programme. The funders had no role in study design, data collection and analysis, decision to publish, or preparation of the manuscript.

Competing Interests: The authors have declared that no competing interests exist.

Abbreviations: 1D-NMR, one dimensional-nuclear magnetic resonance; 2D-COSY, two dimensional correlated spectroscopy; ADMA, asymmetric dimethylarginine; ATP, adenosine tri-phosphate; AU, arbitrary unit; C4, butyrylcarnitine; C12, Dodecenoylcarnitine; Ctrl, control; FIA-MS/MS, Flow Injection Analysis-mass spectrometry; GFR, glomerular filtration rate; H, hydrogen; HLA, human leukocyte antigen; IDO, indoleamine 2,3-dioxygenase; K, potassium; LC-MS/MS, liquid chromatography-mass spectrometry; Na, sodium; SDMA, symmetric dimethylarginine; T, tertile; TGF- β 1, transforming growth factor- β 1.

reduction in the parenchymal content of choline, creatine, taurine and threonine (all: $p < 0.05$) in individuals with lower GFR levels.

Conclusions

We report an association between renal function and altered metabolomic profile in renal transplant individuals with different degrees of kidney graft function.

Introduction

Kidney transplantation has become the most widespread organ engrafting procedure [1]. While advances in immunosuppressive protocols have reduced the incidence of kidney acute rejection over the years [2], long-term outcome of the kidney allograft remains affected by the persistence of chronic allograft dysfunction [3–6]. The success of a renal transplant strictly depends on the ability of monitoring transplant recipients and responsively changing their medications. Unfortunately, we are still relying on the measurement of serum creatinine levels and proteinuria to assess kidney function, which are non-specific and insensitive markers [7,8,9] and whose increase may underlie an already predominantly lost kidney function [8, 9]. Also, metabolic tests and imaging techniques which are routinely employed to detect graft dysfunction, in some circumstances do not provide adequate specificity, sensitivity, or accuracy [7, 10]. Thus, follow-up biopsies, both inconvenient to the patient and associated with expensive histopathological analysis, are required to reach a definitive diagnosis [11]. The appearance of novel techniques that allow the detection of unprecedentedly discovered pathways or unidentified metabolites, may lead to a whole new era of patient management, particularly the use of novel "omics" may generate opportunities unexplored thus far, ideally bypassing the shortcomings of the current routine diagnostic tools. Metabolomics has the potential to perform an unbiased, non-targeted and dynamic analysis of low molecular mass cellular products, thus making it an ideal candidate for the discovery of new potential markers of renal graft function in the transplant patient [12,13,14,15]. Multiple studies report the association between certain immunosuppressive schemes and specific metabolic alterations in urine and serum of transplant patients [16–18] while others propose a relationship between acute renal allograft rejection and urine metabolic profile [19]. Metabolite alteration may also accompany the progression of chronic kidney allograft dysfunction and this may be relevant for the outcome both in terms of graft survival and health of the patient. Thus, aiming to explore the profile of metabolomic abnormalities induced by the progressive reduction of kidney function and their potential impact on kidney graft function, we took advantage of two complementary approaches: liquid chromatography-mass spectrometry (LC-MS/MS) for targeted metabolomic profiling of serum and urine [20] and two dimensional correlated spectroscopy (2D COSY) [21, 22] for the *in vivo* metabolomic profiling of the kidney allograft, in a population of individuals with different degrees of graft dysfunction, defined by progressively lower levels of glomerular filtration rate (GFR) and a pool of healthy non-allograft individuals controls. We thus performed an analysis of the transplant individual at the serum, urine and kidney graft level by taking advantage of the latest analytical techniques, in order to gain insights into the metabolomic abnormalities evident in individuals with failing kidney allografts.

Materials and Methods

A complete description of methods is offered in the [S1 Data](#).

Table 1. Demographic and metabolic characteristics of kidney transplant individuals. Results are expressed as median (25th, 75th percentile).

	T1 (56–108 ml/min)	T2 (46–55 ml/min)	T3 (21–39 ml/min)	p-value
Age	56.0 (44.5, 62.0)	62.0 (53.0, 65.0)	55.0 (48.0, 65.0)	ns
Pre-transplant dialysis duration (months)	35.0 (15.5, 112.5)	53.0 (43.0, 90.0)	78.0 (15.7, 102.0)	ns
Follow-up (months)	75.0 (48.5, 115.0)	77.0 (30.0, 118.0)	64.5 (15.7, 185.8)	ns
Systolic blood pressure (mmHg)	130.0 (127.5, 150.0)	130.0 (130.0, 140.0)	140.0 (121.3, 152.5)	ns
Diastolic blood pressure (mmHg)	80.0 (75.0, 90.0)	80.0 (80.0, 85.0)	75.5 (70.0, 80.0)	ns
Cholesterol (mg/dl)	160.0 (147.5, 187.0)	180.0 (155.0, 213.0)	204.5 (176.8, 240.0)	ns
Triglycerides (mg/dl)	106.0 (72.5, 159.5)	166.0 (83.0, 209.0)	140.0 (100.8, 198.8)	ns
BUN (mg/dl)	56.5 (49.5, 76.5)	76.0 (67.0, 103.8)	104 (88.75, 150.8)	0.009
GFR (ml/min/1.73m ²)	65.0 (60.0, 83.5)	50.0 (48.0, 55.0)	34.5 (24.2, 35.7)	<i>by design</i>
S-Creatinine (mg/dl)	1.3 (1.2, 1.6)	1.5 (1.5, 1.8)	2.4 (2.0, 2.7)	<0.0001
AER (g/day)	0.1 (0.1, 0.2)	0.3 (0.1, 0.4)	1.0 (0.2, 2.5)	0.009

Abbreviations. Male (M); female (F); blood urea nitrogen (BUN); glomerular filtration rate (GFR); albumin excretion rate (AER).

doi:10.1371/journal.pone.0169077.t001

Patient characteristics

Forty kidney transplant individuals, with at least 6 months of follow-up after transplantation, were admitted for post-transplantation routine analysis. After clinical evaluation, individuals were enrolled in the study and assigned to different groups according to degree of allograft function impairment. Transplant patients were then stratified in tertiles according to GFR distribution (T1, T2 and T3) as shown in Table 1. Exclusion criteria were defined as (i) GFR < 25 ml/min; (ii) serum creatinine > 3.0 mg/dl; (iii) severe uncontrolled arterial hypertension; and (iv) arterial renal stenosis (assessed with Color Doppler Ultrasonography). Finally, the control group (Ctrl) consisted of ten healthy individuals with normal renal function. Data were obtained after individuals' written consent. The study protocol was conducted after Institutional Review Board approval. A blinded code was assigned to each participating patient. Kidney transplant recipients did not differ with regard to donor age, HLA match, panel of reactive antibodies, cold ischemia time, rejection rate, cytomegalovirus infection and lymphoproliferative diseases across the various renal function strata.

Metabolomics protocol

To gain greater insight into the metabolome of the kidney transplant patient, we opted to use a novel and unique composite approach to define the of *ex vivo* (serum and urine) and *in vivo* metabolomic profile of kidney transplant individuals by using LC-MS/MS, FIA-MS/MS (n = 40 patients) and 2D COSY [22] with subsequent 3D-image transformation [23], performed on a subgroup (n = 15) of renal transplant individuals. For additional details on the metabolomics protocol, please refer to S1 Data. The Human Metabolome DataBase (HMDB, <http://www.hmdb.ca/>) was used to study the metabolic pathways at the base of the observed molecular alterations and to hypothesize potential effects of these on graft function.

Statistical analysis

Serum markers were presented as median (25th, 75th percentiles). Urinary markers normalized to creatinine were presented as median (25th, 75th percentiles). Serum and urinary metabolites present in at least 80% of the study subjects were designated as common and subjected to further analysis. Kidney transplant recipients were stratified according to the distribution of renal function (T1, T2, T3), in which T3 represented subjects with impaired graft

function, T2 subjects with fairly conserved renal allograft function and T1 represented subjects with well-preserved renal function, respectively. Multivariate analysis (volcano plot) of common metabolites represents a fold difference (x-axis) between mean values of the metabolites within T3 and T1 strata respectively, whereas nominal significance is presented on the y-axis (Figs 1 and 2). Differences among the groups were evaluated in the general linear model based on the metabolites transformed to their logarithms (base 10). Study groups were treated in a categorical (T3 vs. T1, T1 vs. Ctrl) or an ordinal way (T1-T3) appropriately. Spearman non-parametric correlation matrix was created among kidney transplant recipients to evaluate correlations among the metabolites. Correlation coefficients are presented. All tests were two-sided, and a p value of less than 0.05 was considered indicative of statistical significance. Data analysis was performed using SAS version 9.3 (SAS Institute, Cary, NC).

Results

Individual characteristics

Forty kidney transplant individuals were enrolled in our cross-sectional study and stratified according to tertiles of GFR distribution as follows: T1 = 56–108 ml/min; T2 = 46–55 ml/min; and T3 = 21–39 ml/min. Individuals among groups did not show major differences in terms of demographic characteristics, lipid profile or blood pressure measurements (Table 1), while mean group comparison revealed significant differences in blood urea nitrogen, serum creatinine and albumin excretion rate among T1, T2 and T3 (Table 1).

Ex vivo LC-MS/MS and FIA-MS/MS in kidney transplant individuals with different degrees of graft function

We took advantage of the AbsoluteIDQ™ p180 kit assay (BIOCRATES Life Sciences AG) to determine serum and urinary concentration of 190 metabolites divided as follows: amines (amino acids and biogenic amines), acylcarnitines, phosphatidylcholines, sphingomyelins, lyso-phosphatidylcholines and hexose. The majority of the biochemical classes of metabolites were commonly detected in serum except for acylcarnitines, for which the detectability was 37%. On the contrary, there were two major biochemical classes of easily detectable metabolites in urine: amino acid and biogenic amines (88%) and acylcarnitines (46%). Finally, all lipid metabolites were below the limit of method detection in the urine samples (S1 Table).

Serum metabolomic profiling

Protein or amino acid metabolism alterations, dietary deficiencies, increased catabolic degradation and inflammation are some of the causes behind metabolite abnormalities in serum among kidney graft individuals [24]. In our cohort, glutamine was progressively higher in kidney transplant individuals with impaired GFR (T3) as compared to patients with more preserved kidney function (T1) (T3 = 765 [749, 827] vs. T1 = 658 [640, 685] μ M, $p = 0.01$; Fig 1A and 1B). Conversely, serum tryptophan was reduced in patients with lower GFR (T3) as compared to T1 patients (T3 = 71 [59, 76] vs. T1 = 93 [84, 94] μ M, $p < 0.05$; Fig 1A and 1B). Low serum tryptophan concentrations have been linked to inflammation and regulation of the immune response; in particular, indoleamine 2,3-dioxygenase (IDO)-mediated tryptophan catabolism has been reported during allograft rejection [25].

Among biogenic amines, dimethylarginine (DMA) analogues showed significant differences among groups. Specifically, asymmetric (A)DMA was increased in patients with reduced GFR (T3 = 2.47 [2.06, 2.57] vs. T1 = 1.56 [1.34, 1.68] μ M, $p < 0.001$; Fig 1A and 1B). Comparison of ADMA between T1 patients and control individuals revealed increases in serum

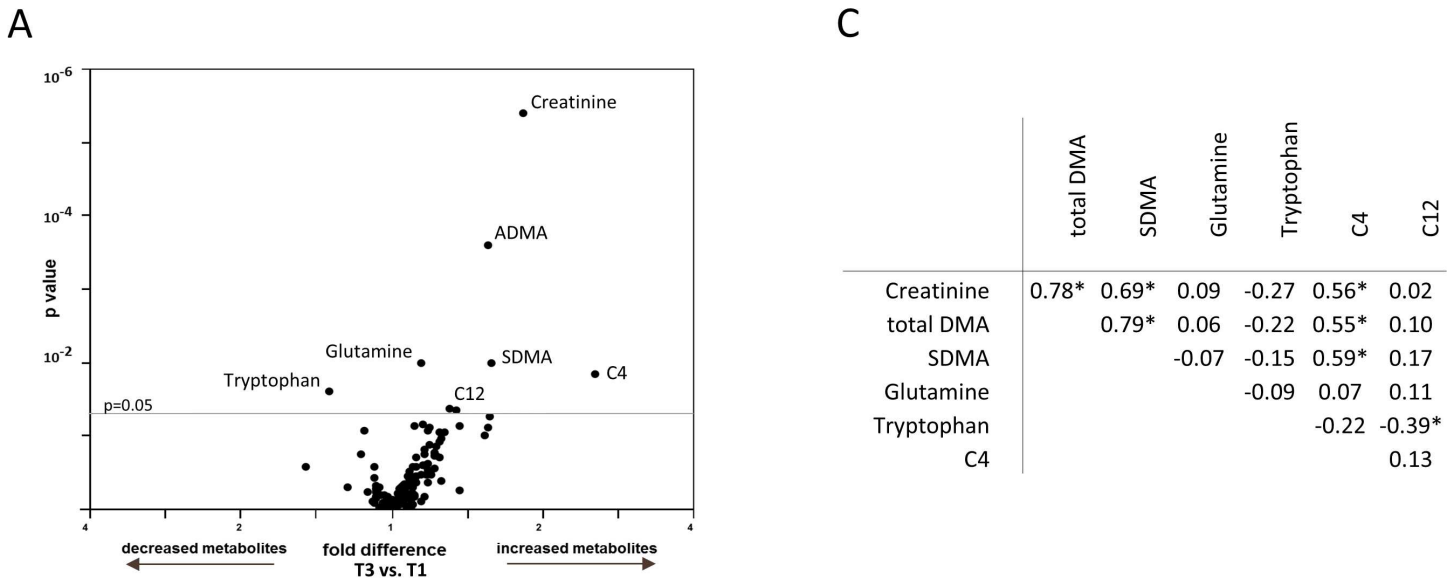


Fig 1. (A) Multivariate analysis (volcano plot) of common metabolites measured in the serum on the Biocrates platform and their association with glomerular filtration rate (GFR; T1-T3) are reported as fold difference (x-axis), and nominal significance is presented on the y-axis. (B) Serum metabolites significantly different among patients with varying renal function are shown in the kidney transplant recipient (T1, T2, T3) and the control (Ctrl) group. (C) Spearman nonparametric correlation matrix among the metabolites in serum significantly associated with varying kidney transplant function. Correlation coefficients are presented. Significant associations are marked with an asterisk (*).

doi:10.1371/journal.pone.0169077.g001

ADMA levels in kidney recipients but with preserved renal function (T1 vs. Ctrl = 0.88 [0.73, 0.99] μM , $p < 0.0001$; Fig 1B). Similarly, symmetric DMA (S)DMA was increased in patients with low GFR (T3 = 1.64 [1.30, 1.95] vs. T1 = 1.02 [0.98, 1.28] μM , $p = 0.01$; Fig 1A and 1B) and SDMA serum concentration variations were proportional to kidney graft performance (test for trend [T1-T3]: $p = 0.01$; Fig 1 B). Reference individuals with normal renal function displayed lower SDMA levels as compared to T1 patients (T1 vs. Ctrl = 0.48 [0.35, 0.52] μM , $p = 0.0004$; Fig 1B). Methylarginine isomers have been previously reported to be altered in individuals with chronic renal failure [26], perpetrating kidney damage through inhibition of nitric oxide synthase activity, induction of collagen and TGF- β 1 synthesis and constituting independent causes of mortality and cardiovascular risk [27].

A common finding during renal insufficiency is the elevation of acylcarnitine serum content, most likely due to defective kidney excretion [28]. In the sample of patients under study, butyrylcarnitine (C4) and dodecanoylcarnitine (C12) were significantly higher in patients with

worse graft function (C4: T3 = 0.60 [0.35, 0.74] vs. T1 = 0.30 [0.26, 0.42] μM , $p = 0.01$; C12: T3 = 0.12 [0.08, 0.15] vs. T1 = 0.10 [0.08, 0.11] μM , $p < 0.05$; Fig 1A and 1B). Both C4 and C12 were significantly different between control individuals and kidney graft patients with conserved renal function (C4: T1 vs. Ctrl = 0.15 [0.11, 0.23] μM , $p = 0.0007$; C12: T1 vs. Ctrl = 0.08 [0.07, 0.10] μM , $p = 0.0015$; Fig 1B). These alterations are also consistent with the impaired fatty acid metabolism and subsequent acylcarnitine accumulation that occur during renal failure.

Spearman correlation matrix of serum metabolites significantly associated with kidney graft function revealed that only certain metabolites were correlated with each other. Total DMA, SDMA and acylcarnitine C4 were significantly correlated. Interestingly, there was also an inverse association between acylcarnitine C12 and tryptophan. Glutamine did not correlate with any other metabolite in the studied matrix (Fig 1C).

Urine metabolomic profiling

Urinary levels of amino acids and biogenic amines were overall reduced in individuals with poor graft function, pointing to reduced biosynthesis, enhanced catabolism or poor filtration of these classes of metabolites. Urinary histidine was reduced in T3 kidney graft patients as compared to patients with more conserved graft function (T3 = 12.0 [10.0, 20.0] vs. T1 = 31.0 [22.0, 54.0] μM , $p < 0.05$; Fig 2A and 2B). Histidine is an anti-inflammatory and anti-oxidant factor, and its decrease has been associated with systemic inflammation and increased mortality in individuals with poor kidney function [29].

Among biogenic amines, the urinary concentration of carnosine was reduced in patients with a failing graft (T3 = 0.11 [0.09, 0.17] vs. T1 = 0.46 [0.20, 0.56] μM , $p < 0.05$; Fig 2A and 2B). Similarly, free urinary dopamine was decreased in T3 individuals compared to T1 (T3 = 0.08 [0.07, 0.10] vs. T1 = 0.14 [0.12, 0.22] μM , $p < 0.001$) and Ctrl individuals (T1 vs. Ctrl = 0.18 [0.17, 0.28] μM , $p < 0.05$; Fig 2A and 2B). Urinary DOPA (a metabolic precursor of dopamine), followed the same pattern as dopamine (Fig 2A and 2B), and finally, total DMA and its two analogues ADMA and SDMA were lower in patients in the T3 group (total DMA: T3 = 4.31 [4.19, 4.80] vs. T1 = 7.25 [5.26, 7.48] μM , $p = 0.001$; ADMA: T3 = 1.22 [1.02, 1.26] vs. T1 = 2.41 [1.72, 3.30] μM , $p < 0.001$; SDMA: T3 = 3.19 [2.97, 3.32] vs. T1 = 4.34 [4.19, 4.98] μM , $p < 0.01$; Fig 2A and 2B). Notably, reduction in urinary ADMA, and in general disturbance of nitric oxide metabolism, have been recently associated with renal graft failure and increased mortality in individuals following kidney transplantation [30].

Spearman correlation matrix of urinary metabolites significantly associated with kidney graft function revealed that all the respective metabolites were significantly correlated with each other (Fig 2C).

In vivo 2D COSY spectroscopy

A subgroup of fifteen individuals ($n = 5$ from each GFR tertile subgroup) underwent 2D COSY examination for *in vivo* analysis of the transplanted kidney (Fig 3B1–3C1). Subsequently, additional 3D image post-processing was performed to better visualize and compare the differences among resonance and crosspeaks composing the spectra obtained from T1 and T3 groups (Fig 3A and 3B2–3C2), and 25 metabolites were identified. Mean comparison of the crosspeak volumes revealed differences in the concentrations of the amino acids taurine, which acts as an antioxidant agent and prevents lipid peroxidation of mesangial and tubular epithelial cells [31], and threonine, whose role remains obscure in the context of renal function (Fig 3A, 3C1 and 3C2). Both amino acids were found to be significantly reduced in the T3 group as compared to the T1 (Taurine: T3 = 0.07 [0.03, 0.10] vs. T1 = 0.12 [0.07, 0.16] arbitrary

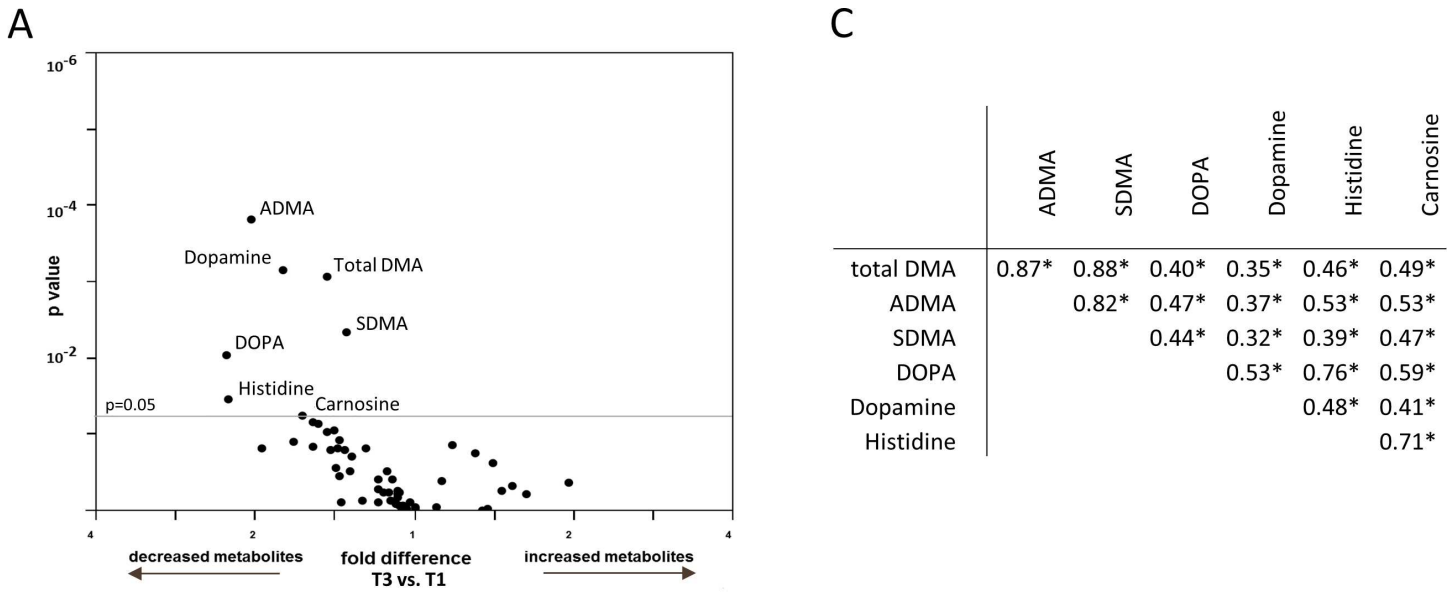


Fig 2. (A) Multivariate analysis (volcano plot) of common metabolites measured in the urine on the Biocrates platform and their association with glomerular filtration rate (GFR; T1-T3) are reported as fold difference (x-axis), and nominal significance is presented on the y-axis. (B) Urinary metabolites significantly different among patients with varying renal function are presented in the kidney transplant recipient (T1, T2, T3) and the control (Ctrl) group. (C) Spearman nonparametric correlation matrix among the metabolites in urine significantly associated with varying kidney transplant function. Correlation coefficients are presented. Significant associations are marked with an asterisk (*).

doi:10.1371/journal.pone.0169077.g002

units [AU], $p = 0.04$; Threonine: T3 = 0.11 [0.06, 0.19] vs. T1 = 0.25 [0.19, 0.27] AU, $p = 0.006$; Fig 3A, 3B1, 3B2, 3C1 and 3C2). Among other metabolites identified by *in vivo* 2D COSY examination, choline, an essential nutrient with a pivotal role in the synthesis of cell membranes and neurotransmitters [32] (e.g. acetylcholine), was significantly reduced in T3 individuals as compared to T1 (Choline 1: T3 = 0.12 [0.04, 0.17] vs. T1 = 0.21 [0.16, 0.33] AU, $p = 0.01$; Choline 2: T3 = 0.15 [0.09, 0.45] vs. T1 = 0.47 [0.29, 0.65] AU; $p = 0.04$, Fig 3A, 3B1, 3B2, 3C1 and 3C2). Similarly, creatine, whose major function is to transport high energy groups from their site of production (mitochondria) to the site of ATP consumption in the cytoplasm [33], was depleted in kidneys from T3 allograft individuals compared to T1 patients (T3 = 0.04 [0.03, 0.08] vs. T1 = 0.11 [0.06, 0.16] AU, $p = 0.03$, Fig 3A, 3B1, 3B2, 3C1 and 3C2). Taken together, these data suggest that in kidney transplant individuals, low GFR may be associated with reduced metabolism/high-energy levels and reduced cellularity of the renal graft.

A

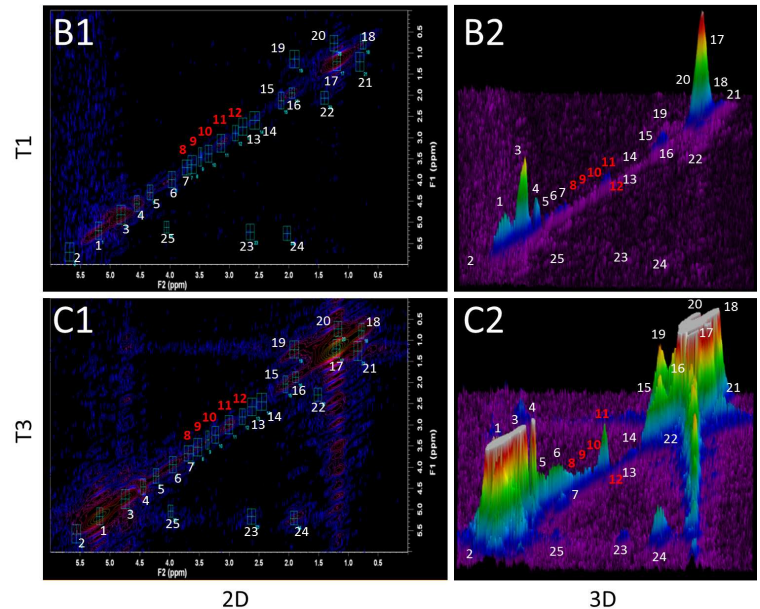
Peak ID	T1 (AU)	T3 (AU)	p value	
1	Water 1	0.35(0.27, 0.71)	0.71(0.13, 1.77)	-
2	Olefinic Lipid	0.22(0.08, 0.85)	0.18(0.08, 0.57)	-
3	Water 2	1.10(0.28, 2.11)	1.66(0.16, 4.90)	-
4	Homocarnosine	0.34(0.08, 0.59)	0.13(0.05, 0.42)	-
5	G'	0.22(0.07, 0.37)	0.14(0.10, 0.19)	-
6	Serine	0.22(0.16, 0.36)	0.19(0.09, 0.30)	-
7	Alanine/Glutamine	0.24(0.20, 0.32)	0.17(0.10, 0.23)	-
8	Threonine	0.25(0.19, 0.27)	0.11(0.06, 0.19)	0.006
9	Taurine	0.12(0.07, 0.16)	0.07(0.03, 0.10)	0.04
10	Choline 1	0.21(0.16, 0.33)	0.12(0.04, 0.17)	0.01
11	Choline 2	0.47(0.29, 0.65)	0.15(0.09, 0.45)	0.04
12	Creatine	0.11(0.06, 0.16)	0.04(0.03, 0.08)	0.03
13	Aspartate	0.12(0.08, 0.27)	0.06(0.04, 0.13)	-
14	Glutathione	0.18(0.09, 0.52)	0.10(0.07, 0.15)	-
15	Glutamine	0.21(0.13, 0.65)	0.17(0.07, 0.26)	-
16	Methylene	0.15(0.10, 0.27)	0.14(0.07, 0.22)	-
17	Methyl/Alanine	2.67(1.20, 6.76)	3.49(1.48, 5.84)	-
18	Lipid3	0.35(0.15, 0.57)	0.32(0.10, 0.75)	-
19	E	0.20(0.07, 0.43)	0.20(0.10, 0.42)	-
20	Lipid4	0.31(0.11, 0.51)	0.14(0.08, 0.52)	-
21	A	0.28(0.11, 0.42)	0.29(0.09, 0.48)	-
22	E'	0.14(0.09, 0.30)	0.09(0.05, 0.14)	-
23	D	0.08(0.03, 0.14)	0.04(0.03, 0.13)	-
24	C	0.12(0.06, 0.20)	0.08(0.04, 0.15)	-
25	G	0.04(0.02, 0.13)	0.03(0.01, 0.04)	-

Data expressed as median and interquartile range

Fig 3. Two dimensional Correlated Spectroscopy (2D COSY) results of the kidney allograft. (A) Table of 2D COSY crosspeak volumes shows significantly lower threonine, taurine, creatine and choline content in T3 individuals with low glomerular filtration rate and severe allograft dysfunction when compared to T1 individuals with more conserved graft function. “-” indicates a p value greater than 0.05. (B) Representative 2D COSY spectra show higher content of lipid-derived metabolites and reduced levels of threonine, taurine, creatine and choline in T3 individuals carrying a failing allograft. B1 shows a topological map of crosspeaks and B2 shows the 3D reconstruction. (C) Representative 2D COSY of T1 allograft patients with more conserved graft function with two-dimensional (C1) and three-dimensional (C2) reconstruction of the 2D COSY data. Data are expressed as median (25th, 75th percentile).

Abbreviations. Arbitrary Units (AU).

doi:10.1371/journal.pone.0169077.g003



Discussion

In this work, we have characterized the metabolite profile of biofluids (i.e. serum, urine) and of kidney allograft parenchyma in transplanted individuals with varying degrees of filtration impairment, by using novel analytical techniques that allow unbiased quantification of the molecular alterations associated with chronic allograft dysfunction [34], with the goal of defining the association between kidney allograft dysfunction and metabolomic fingerprint. Modifications in specific metabolites have been shown to be involved, either as a cause or symptom, in kidney disease. For instance, circulating amines (i.e. amino acids and biogenic amines) are promptly altered during the early phases of kidney impairment [34], and the more the graft fails, the more the imbalance becomes clear. These alterations can usually be attributed to increased protein degradation, inflammation [24, 35] or protein malnutrition. Accordingly,

we showed that serum tryptophan alterations began to appear in T1 kidney allograft patients, to worsen in poor allograft function patients (T3) with a dose response trend, and this decline was not explained by urinary losses. Low serum tryptophan can be explained by an accelerated breakdown rate by the immunomodulatory enzyme IDO, due to an excess of inflammation/immune activation [25]. Evidence of a parallel reduction in urinary tryptophan in T3 individuals, who had poor allograft function, points to systemic exhaustion of this amino acid, rather than localized waste. Conversely, high serum glutamine can be explained by the substantial reduction in glutamine uptake that often takes place during chronic renal disease [36], and this is further confirmed by the reduction in urinary glutamine in individuals with GFR impairment. However, apart from the evidence that glutamine catabolism is one of the major determinants of ammonemia in these patients, the kinetics of glutamine in renal dysfunction are still largely unknown [37]. Progressive increase in the concentration of serum DMA derivatives coupled with decrease in their urinary excretion was also evident in individuals with more severe graft dysfunction. Low GFR can explain reduced excretion and serum accumulation of ADMA and SDMA, also confirming their classification as toxic uremic retention solutes [38]. DMA isomers appear to induce kidney damage through inhibition of nitric oxide synthase, induction of the synthesis of collagen and TGF- β 1 and sodium retention (22), supporting the hypothesis that there is a relationship between ADMA and hypertension or glomerulosclerosis, two main determinants of kidney injury progression [39]. Finally, higher serum concentration of short-chain acylcarnitines (C4 and C12) in T3 patients can be attributed to the loss of renal parenchyma typical of long-term renal failure that, by removing a source of endogenous carnitine synthesis (thus reducing the handling and consumption of acylcarnitines), impairs the ability of the kidney to excrete acylcarnitine into the urine [40]. Finally, decreased levels of the branched chain amino acids have been described in the presence of advanced chronic kidney disease in some reports [41]. In our study, serum levels of leucine, isoleucine and valine did not differ between control groups and kidney transplant recipients with varying renal function, most probably due to the overall good nutritional status across groups of subjects under study.

Interesting results are also evident from urine mass spectrometry analysis. DOPA and dopamine were reduced in T3 transplant individuals as compared to patients with more conserved GFR. In the kidney, dopamine, when coupled to D₁-like receptors in the proximal tubule, causes inhibition of sodium reabsorption by blocking Na/H-exchanger and Na/K-ATPase activity, thus regulating blood pressure. Notably, the absence of the same findings in the serum points to a reduction in dopamine synthesis at the kidney level—evidence previously linked with onset of hypertension. Reduction in urinary ADMA has also been associated with reduction in the lifespan of the kidney graft and overall mortality in kidney transplant patients [30].

Changes in the *in vivo* NMR spectroscopy profile of certain metabolites often precede morphological or symptomatic changes in the kidney, brain, breast, and other organs [42–46]. Although traditional 1D-NMR spectroscopy is sufficient to observe distinct functional groups in small molecules, many overlapping resonances in complex molecules can render the interpretation of peaks more difficult [47]. The use of 2D COSY circumvents this challenge by introducing a second dimension to the spectrum derived from the graft [48], while additional 3D image transformation adds further spatial detail to the examination. In our study, the novel application of *in vivo* allograft 2D COSY spectroscopy revealed a 50% reduction in peak intensity from threonine, taurine, choline and creatine in individuals with advanced allograft dysfunction. Notably, taurine concentration in our patients was significantly altered only at the kidney graft level. Recent studies suggest that during kidney injury, transcriptional repression of the taurine transporter by p53 determines intracellular depletion of taurine, causing

necrotic cell death [49]. On the other hand, taurine supplementation protects mesangial and tubular cells from high glucose or hypoxia *in vitro*, ameliorates nephrotic syndrome or diabetic nephropathy *in vivo* in animal models [31], and provides better outcomes in patients transplanted with kidneys from donors submitted to taurine preconditioning [50]. T3 patients also displayed intra-graft reduction in choline, a pivotal factor for the synthesis of cell membranes and cell-signaling components, a condition that can translate to acute renal failure and hypertension in animal models [51]. Finally, *in vivo* 2D COSY spectroscopy of the renal allograft revealed a reduction in creatine content, whose major function is the transport of high energy groups from mitochondria to cytoplasm, and is produced/stored in the kidney cortex; however, the implications of lack of creatine in kidney pathology are not clear yet. Notably, although not statistically different, a general increase in intra-graft lipid content among T3 patients was evident.

The limitations of our study include minor overlap of metabolomic profile of the imaging study with the targeted metabolomics of the biofluids, rendering it impossible for us to evaluate whether serum or urinary metabolites reflected systemic or local changes within the transplanted kidney, therefore, metabolomic disturbances identified here, will need to be studied further using tools of the functional studies. We also acknowledge a relatively small sample size as well as the cross-sectional nature of our study design. Finally, the patients included in our analysis were heterogenous in terms of both immunosuppressive schemes and other treatments that they were submitted to: the decision to opt for heterogeneous groups was based on the assumption of generalizability of our analysis. Irrespective of underlying metabolomic alterations induced by exogenous treatments, while focusing on common patterns of metabolic abnormalities merely determined by the extent of kidney function. However, potential value of the candidate metabolites in predicting worsening kidney graft function will need to be evaluated in the subsequent follow-up studies.

We report the existence of a relationship between different levels of kidney graft impairment and imbalance of specific metabolites possibly linked to the pathophysiology of renal graft dysfunction. Low GFR was significantly associated with serum circulating factors linked to negative immunomodulation, hypertension, micro-ischemic events, fibrosis and cytotoxicity. Metabolic alterations at the parenchymal level of the transplanted kidney were also evident with significant reduction in high-energy and structural components of the graft parenchyma, and finally analysis of the urinary matrix highlighted the existence of a pro-hypertensive and pro-inflammatory environment within the transplanted organ.

Supporting Information

S1 Data.

(DOCX)

S1 Table. Overview of the total number of metabolites analyzed per biofluid (i.e. serum and urine) before and after threshold selection based on detection in at least 80% of the study patients (commonly detected). Metabolite concentrations are expressed as μM .

(DOCX)

S2 Table. Numerical report of amino acids significantly different among groups in urine based on their alteration in serum. Data expressed as median (25th, 75th percentiles). Metabolite concentrations are expressed as μM .

(DOCX)

S3 Table. No differences were detected among groups in branched chain amino acid (isoleucine, leucine, valine) concentration in serum and urine. Data expressed as median (25th,

75th percentiles). Metabolite concentrations are expressed as μM .
(DOCX)

S4 Table. 2D Correlated Spectroscopy Crosspeak Assignments.
(DOCX)

S1 Fig. Representative 2D COSY voxel location as shown on 3 plane T2-weighted Magnetic Resonance Imaging.
(DOCX)

Acknowledgments

This work was supported by a AST Genentech/Novartis Clinical Science Fellowship grant to RB and an Italian Society of Diabetes (AMD-SID) Pasquale di Coste Award to RB. RB was supported by a JDRF Post-Doctoral Research Fellowship grant. MAN received a JDRF Career Development Award (5-CDA-2015-89-A-B). PF was supported by an American Heart Association (AHA) Grant-In-Aid and the Italian Ministry of Health (grant RF-2010-2303119). PF also received support from the EFSD/Sanofi European Research Programme. The funders had no role in study design, data collection and analysis, decision to publish, or preparation of the manuscript.

Author Contributions

Conceptualization: RB PF MAN AC AL SM.

Data curation: RB PF AL SM ST MBN FD.

Formal analysis: RB MAN SM AL AC.

Funding acquisition: PF AC AL.

Investigation: RB MAN LB SM ST FD MBN AVV VU VDZ BEE AS FDC AL.

Methodology: RB MAN PF.

Project administration: RB PF MAN SM AL AC.

Resources: PF RB LB SB.

Software: RB MAN.

Supervision: AC AL AC BL.

Validation: RB MAN LB SM ST FD MBN AVV VU VDZ BEE AS FDC AL.

Writing – original draft: RB MAN PF.

Writing – review & editing: RB MAN LB SM ST FD MBN AVV VU VDZ BEE MV AS FDC AL AC PF.

References

1. Murray JE, Merrill JP, Harrison JH. Renal homotransplantation in identical twins. 1955. *J Am Soc Nephrol.* 2001; 12(1):201–4. PMID: [11317972](#)
2. Kasiske BL, Skeans MA, Leighton TR, Ghimire V, Leppke SN, Israni AK. OPTN/SRTR 2011 Annual Data Report: International Data. *Am J Transplant.* 2013; 13 Suppl 1:199–225.
3. Nankivell BJ, Chapman JR. Chronic allograft nephropathy: current concepts and future directions. *Transplantation.* 2006; 81(5):643–54. doi: [10.1097/01.tp.0000190423.82154.01](#) PMID: [16534463](#)

4. <http://www.srtr.org>. 2010.
5. Amico P. Evolution of graft survival in kidney transplantation: an analysis of the OPTN/UNOS Renal Transplant Registry. *Clin Transpl*. 2010;1–15. PMID: [21698830](#)
6. Dharnidharka VR, Fiorina P, Harmon WE. Kidney transplantation in children. *N Engl J Med*. 2014; 371(6):549–58. doi: [10.1056/NEJMra1314376](#) PMID: [25099579](#)
7. Filler G, Sharma AP. How to monitor renal function in pediatric solid organ transplant recipients. *Pediatr Transplant*.
8. Inker LA, Schmid CH, Tighiouart H, Eckfeldt JH, Feldman HI, Greene T, et al. Estimating glomerular filtration rate from serum creatinine and cystatin C. *N Engl J Med*. 2012; 367(1):20–9. doi: [10.1056/NEJMoa1114248](#) PMID: [22762315](#)
9. Niewczas MA, Gohda T, Skupien J, Smiles AM, Walker WH, Rosetti F, et al. Circulating TNF receptors 1 and 2 predict ESRD in type 2 diabetes. *J Am Soc Nephrol*. 2012; 23(3):507–15. doi: [10.1681/ASN.2011060627](#) PMID: [22266663](#)
10. Singh AK, Sahani DV. Imaging of the renal donor and transplant recipient. *Radiol Clin North Am*. 2008; 46(1):79–93, vi. doi: [10.1016/j.rcl.2008.01.009](#) PMID: [18328881](#)
11. Stillman IE, Pavlakis M. Allograft biopsies: studying them for all they're worth. *J Am Soc Nephrol*. 2009; 20(11):2282–4. doi: [10.1681/ASN.2009090930](#) PMID: [19797470](#)
12. Foxall PJ, Mellotte GJ, Bending MR, Lindon JC, Nicholson JK. NMR spectroscopy as a novel approach to the monitoring of renal transplant function. *Kidney Int*. 1993; 43(1):234–45. PMID: [8433564](#)
13. Serkova N, Fuller TF, Klawitter J, Freise CE, Niemann CU. H-NMR-based metabolic signatures of mild and severe ischemia/reperfusion injury in rat kidney transplants. *Kidney Int*. 2005; 67(3):1142–51. doi: [10.1111/j.1523-1755.2005.00181.x](#) PMID: [15698456](#)
14. Le Moyec L, Pruna A, Eugene M, Bedrossian J, Idatte JM, Huneau JF, et al. Proton nuclear magnetic resonance spectroscopy of urine and plasma in renal transplantation follow-up. *Nephron*. 1993; 65(3):433–9. PMID: [8289995](#)
15. Rush D, Somorjai R, Deslauriers R, Shaw A, Jeffery J, Nickerson P. Subclinical rejection—a potential surrogate marker for chronic rejection—may be diagnosed by protocol biopsy or urine spectroscopy. *Ann Transplant*. 2000; 5(2):44–9. PMID: [11217206](#)
16. Kim CD, Kim EY, Yoo H, Lee JW, Ryu DH, Noh DW, et al. Metabonomic analysis of serum metabolites in kidney transplant recipients with cyclosporine A- or tacrolimus-based immunosuppression. *Transplantation*. 2010; 90(7):748–56. doi: [10.1097/TP.0b013e3181edd69a](#) PMID: [20842074](#)
17. Dieme B, Halimi JM, Emond P, Buchler M, Nadal-Desbarat L, Blasco H, et al. Assessing the metabolic effects of calcineurin inhibitors in renal transplant recipients by urine metabolic profiling. *Transplantation*. 2014; 98(2):195–201. doi: [10.1097/TP.000000000000039](#) PMID: [24598938](#)
18. Wang J, Zhou Y, Xu M, Rong R, Guo Y, Zhu T. Urinary metabolomics in monitoring acute tubular injury of renal allografts: a preliminary report. *Transplant Proc*. 2011; 43(10):3738–42. doi: [10.1016/j.transproceed.2011.08.109](#) PMID: [22172837](#)
19. Wang JN, Zhou Y, Zhu TY, Wang X, Guo YL. Prediction of acute cellular renal allograft rejection by urinary metabolomics using MALDI-FTMS. *J Proteome Res*. 2008; 7(8):3597–601. doi: [10.1021/pr800092f](#) PMID: [18620448](#)
20. Niewczas MA, Sirich TL, Mathew AV, Skupien J, Mohny RP, Warram JH, et al. Uremic solutes and risk of end-stage renal disease in type 2 diabetes: metabolomic study. *Kidney Int*. 2014; 85(5):1214–24. doi: [10.1038/ki.2013.497](#) PMID: [24429397](#)
21. Ramadan S, Andronesi OC, Stanwell P, Lin AP, Sorensen AG, Mountford CE. Use of in vivo two-dimensional MR spectroscopy to compare the biochemistry of the human brain to that of glioblastoma. *Radiology*. 2011; 259(2):540–9. doi: [10.1148/radiol.11101123](#) PMID: [21357517](#)
22. Ramadan S, Ratai EM, Wald LL, Mountford CE. In vivo 1D and 2D correlation MR spectroscopy of the soleus muscle at 7T. *J Magn Reson*. 2010; 204(1):91–8. doi: [10.1016/j.jmr.2010.02.008](#) PMID: [20206561](#)
23. Lin AP, Ramadan S, Stern RA, Box HC, Nowinski CJ, Ross BD, et al. Changes in the neurochemistry of athletes with repetitive brain trauma: preliminary results using localized correlated spectroscopy. *Alzheimer's research & therapy*. 2015; 7(1):13.
24. Suliman ME, Qureshi AR, Stenvinkel P, Pecoits-Filho R, Barany P, Heimbürger O, et al. Inflammation contributes to low plasma amino acid concentrations in patients with chronic kidney disease. *Am J Clin Nutr*. 2005; 82(2):342–9. PMID: [16087977](#)
25. Brandacher G, Cakar F, Winkler C, Schneeberger S, Obrist P, Bosmüller C, et al. Non-invasive monitoring of kidney allograft rejection through IDO metabolism evaluation. *Kidney Int*. 2007; 71(1):60–7. doi: [10.1038/sj.ki.5002023](#) PMID: [17136028](#)

26. Fleck C, Schweitzer F, Karge E, Busch M, Stein G. Serum concentrations of asymmetric (ADMA) and symmetric (SDMA) dimethylarginine in patients with chronic kidney diseases. *Clin Chim Acta*. 2003; 336(1–2):1–12. PMID: [14500028](#)
27. Leiper J, Nandi M, Torondel B, Murray-Rust J, Malaki M, O'Hara B, et al. Disruption of methylarginine metabolism impairs vascular homeostasis. *Nat Med*. 2007; 13(2):198–203. doi: [10.1038/nm1543](#) PMID: [17273169](#)
28. Wanner C, Schollmeyer P, Horl WH. Serum carnitine levels and carnitine esters of patients after kidney transplantation: role of immunosuppression. *Metabolism*. 1988; 37(3):263–7. PMID: [3278191](#)
29. Zhang ZH, Wei F, Vaziri ND, Cheng XL, Bai X, Lin RC, et al. Metabolomics insights into chronic kidney disease and modulatory effect of rhubarb against tubulointerstitial fibrosis. *Sci Rep*. 2015; 5:14472. doi: [10.1038/srep14472](#) PMID: [26412413](#)
30. Frenay AR, van den Berg E, de Borst MH, Beckmann B, Tsikakos D, Feelisch M, et al. Plasma ADMA associates with all-cause mortality in renal transplant recipients. *Amino Acids*. 2015; 47(9):1941–9. doi: [10.1007/s00726-015-2023-0](#) PMID: [26077715](#)
31. Trachtman H, Sturman JA. Taurine: A therapeutic agent in experimental kidney disease. *Amino Acids*. 1996; 11(1):1–13. Epub 1996/03/01. doi: [10.1007/BF00805717](#) PMID: [24178634](#)
32. Montes de Oca M, Perazzo JC, Monserrat AJ, Arrizurieta de Muchnik EE. Acute renal failure induced by choline deficiency: structural-functional correlations. *Nephron*. 1980; 26(1):41–8. PMID: [7393377](#)
33. Heimbürger O, Stenvinkel P, Barany P. The enigma of decreased creatinine generation in acute kidney injury. *Nephrol Dial Transplant*. 2012; 27(11):3973–4. doi: [10.1093/ndt/gfs459](#) PMID: [23144066](#)
34. Ceballos I, Chauveau P, Guerin V, Bardet J, Parvy P, Kamoun P, et al. Early alterations of plasma free amino acids in chronic renal failure. *Clin Chim Acta*. 1990; 188(2):101–8. PMID: [2379310](#)
35. Tizianello A, De Ferrari G, Garibotto G, Gurreri G, Robaudo C. Renal metabolism of amino acids and ammonia in subjects with normal renal function and in patients with chronic renal insufficiency. *J Clin Invest*. 1980; 65(5):1162–73. doi: [10.1172/JCI109771](#) PMID: [7364943](#)
36. Adibi SA. Renal assimilation of oligopeptides: physiological mechanisms and metabolic importance. *Am J Physiol*. 1997; 272(5 Pt 1):E723–36.
37. Fadel FI, Elshamaa MF, Essam RG, Elghoroury EA, El-Saeed GS, El-Toukhy SE, et al. Some amino acids levels: glutamine, glutamate, and homocysteine, in plasma of children with chronic kidney disease. *Int J Biomed Sci*. 2014; 10(1):36–42. PMID: [24711748](#)
38. Vanholder R, De Smet R, Glorieux G, Argiles A, Baurmeister U, Brunet P, et al. Review on uremic toxins: classification, concentration, and interindividual variability. *Kidney Int*. 2003; 63(5):1934–43. doi: [10.1046/j.1523-1755.2003.00924.x](#) PMID: [12675874](#)
39. Duranton F, Lundin U, Gayraud N, Mischak H, Aparicio M, Mourad G, et al. Plasma and urinary amino acid metabolomic profiling in patients with different levels of kidney function. *Clin J Am Soc Nephrol*. 2014; 9(1):37–45. doi: [10.2215/CJN.06000613](#) PMID: [24235289](#)
40. Moder M, Kiessling A, Loster H, Bruggemann L. The pattern of urinary acylcarnitines determined by electrospray mass spectrometry: a new tool in the diagnosis of diabetes mellitus. *Anal Bioanal Chem*. 2003; 375(2):200–10. doi: [10.1007/s00216-002-1654-7](#) PMID: [12560963](#)
41. Garibotto G, Sofia A, Saffioti S, Bonanni A, Mannucci I, Verzola D. Amino acid and protein metabolism in the human kidney and in patients with chronic kidney disease. *Clin Nutr*. 2010; 29(4):424–33. doi: [10.1016/j.clnu.2010.02.005](#) PMID: [20207454](#)
42. Perseghin G, Fiorina P, De Cobelli F, Scifo P, Esposito A, Canu T, et al. Cross-sectional assessment of the effect of kidney and kidney-pancreas transplantation on resting left ventricular energy metabolism in type 1 diabetic-uremic patients: a phosphorous-31 magnetic resonance spectroscopy study. *J Am Coll Cardiol*. 2005; 46(6):1085–92. doi: [10.1016/j.jacc.2005.05.075](#) PMID: [16168295](#)
43. Fiorina P, Bassi R, Gremizzi C, Vergani A, Caldara R, Mello A, et al. 31P-magnetic resonance spectroscopy (31P-MRS) detects early changes in kidney high-energy phosphate metabolism during a 6-month Valsartan treatment in diabetic and non-diabetic kidney-transplanted patients. *Acta Diabetol*. 2012; 49 Suppl 1:S133–9.
44. D'Addio F, Maffi P, Vezzulli P, Vergani A, Mello A, Bassi R, et al. Islet transplantation stabilizes hemostatic abnormalities and cerebral metabolism in individuals with type 1 diabetes. *Diabetes Care*. 2014; 37(1):267–76. doi: [10.2337/dc13-1663](#) PMID: [24026546](#)
45. Fiorina P, Vezzulli P, Bassi R, Gremizzi C, Falautano M, D'Addio F, et al. Near normalization of metabolic and functional features of the central nervous system in type 1 diabetic patients with end-stage renal disease after kidney-pancreas transplantation. *Diabetes Care*. 2012; 35(2):367–74. doi: [10.2337/dc11-1697](#) PMID: [22190674](#)
46. Fiorina P, Perseghin G, De Cobelli F, Gremizzi C, Petrelli A, Monti L, et al. Altered kidney graft high-energy phosphate metabolism in kidney-transplanted end-stage renal disease type 1 diabetic patients:

- a cross-sectional analysis of the effect of kidney alone and kidney-pancreas transplantation. *Diabetes Care*. 2007; 30(3):597–603. doi: [10.2337/dc06-1324](https://doi.org/10.2337/dc06-1324) PMID: [17327327](https://pubmed.ncbi.nlm.nih.gov/17327327/)
47. Hene RJ, van der Grond J, Boer WH, Mali WP, Koomans HA. Pre-transplantation assessment of renal viability with ³¹P magnetic resonance spectroscopy. *Kidney Int*. 1994; 46(6):1694–9. PMID: [7700029](https://pubmed.ncbi.nlm.nih.gov/7700029/)
 48. Delaglio F, Wu Z, Bax A. Measurement of homonuclear proton couplings from regular 2D COSY spectra. *J Magn Reson*. 2001; 149(2):276–81. doi: [10.1006/jmre.2001.2297](https://doi.org/10.1006/jmre.2001.2297) PMID: [11318630](https://pubmed.ncbi.nlm.nih.gov/11318630/)
 49. Ying Y, Kim J, Westphal SN, Long KE, Padanilam BJ. Targeted deletion of p53 in the proximal tubule prevents ischemic renal injury. *J Am Soc Nephrol*. 2014; 25(12):2707–16. doi: [10.1681/ASN.2013121270](https://doi.org/10.1681/ASN.2013121270) PMID: [24854277](https://pubmed.ncbi.nlm.nih.gov/24854277/)
 50. Guan X, Dei-Anane G, Liang R, Gross ML, Nickkholgh A, Kern M, et al. Donor preconditioning with taurine protects kidney grafts from injury after experimental transplantation. *J Surg Res*. 2008; 146(1):127–34. doi: [10.1016/j.jss.2007.06.014](https://doi.org/10.1016/j.jss.2007.06.014) PMID: [18061615](https://pubmed.ncbi.nlm.nih.gov/18061615/)
 51. Keith MO, Tryphonas L. Choline deficiency and the reversibility of renal lesions in rats. *J Nutr*. 1978; 108(3):434–46. PMID: [627918](https://pubmed.ncbi.nlm.nih.gov/627918/)