



Rapid increase in atmospheric iodine levels in the North Atlantic since the mid-20th century

Citation

Cuevas, C. A., N. Maffezzoli, J. P. Corella, A. Spolaor, P. Vallelonga, H. A. Kjær, M. Simonsen, et al. 2018. "Rapid increase in atmospheric iodine levels in the North Atlantic since the mid-20th century." *Nature Communications* 9 (1): 1452. doi:10.1038/s41467-018-03756-1. <http://dx.doi.org/10.1038/s41467-018-03756-1>.

Published Version

doi:10.1038/s41467-018-03756-1

Permanent link

<http://nrs.harvard.edu/urn-3:HUL.InstRepos:37068339>

Terms of Use

This article was downloaded from Harvard University's DASH repository, and is made available under the terms and conditions applicable to Other Posted Material, as set forth at <http://nrs.harvard.edu/urn-3:HUL.InstRepos:dash.current.terms-of-use#LAA>

Share Your Story

The Harvard community has made this article openly available.
Please share how this access benefits you. [Submit a story](#).

[Accessibility](#)

ARTICLE

DOI: 10.1038/s41467-018-03756-1

OPEN

Rapid increase in atmospheric iodine levels in the North Atlantic since the mid-20th century

Carlos A. Cuevas¹, Niccolò Maffezzoli², Juan Pablo Corella¹, Andrea Spolaor^{3,4}, Paul Vallelonga², Helle A. Kjær², Marius Simonsen², Mai Winstrup², Bo Vinther², Christopher Horvat⁵, Rafael P. Fernandez⁶, Douglas Kinnison⁷, Jean-François Lamarque⁷, Carlo Barbante^{3,4} & Alfonso Saiz-Lopez¹

Atmospheric iodine causes tropospheric ozone depletion and aerosol formation, both of which have significant climate impacts, and is an essential dietary element for humans. However, the evolution of atmospheric iodine levels at decadal and centennial scales is unknown. Here, we report iodine concentrations in the RECAP ice-core (coastal East Greenland) to investigate how atmospheric iodine levels in the North Atlantic have evolved over the past 260 years (1750–2011), this being the longest record of atmospheric iodine in the Northern Hemisphere. The levels of iodine tripled from 1950 to 2010. Our results suggest that this increase is driven by anthropogenic ozone pollution and enhanced sub-ice phytoplankton production associated with the recent thinning of Arctic sea ice. Increasing atmospheric iodine has accelerated ozone loss and has considerably enhanced iodine transport and deposition to the Northern Hemisphere continents. Future climate and anthropogenic forcing may continue to amplify oceanic iodine emissions with potentially significant health and environmental impacts at global scale.

¹Department of Atmospheric Chemistry and Climate, Institute of Physical Chemistry Rocasolano, CSIC, Serrano 119, 28006 Madrid, Spain. ²Centre for Ice and Climate, Niels Bohr Institute, University of Copenhagen, Juliane Maries vej 30, Copenhagen Ø 2100, Denmark. ³Ca' Foscari University of Venice, Department of Environmental Sciences, Informatics and Statistics, Via Torino 155, 30170 Venice Mestre, Italy. ⁴Institute for the Dynamics of Environmental Processes, IDPA-CNR, Via Torino 155, 30170 Mestre, Italy. ⁵Department of Applied Mathematics, School of Engineering and Applied Sciences, Harvard University, Cambridge, MA 02138, USA. ⁶National Research Council (CONICET), FCEN-UNCuyo, UTN-FRM, Mendoza 5501, Argentina. ⁷Atmospheric Chemistry Observations and Modelling, NCAR, Boulder, CO 80301, USA. Correspondence and requests for materials should be addressed to A.S.-L. (email: a.saiz@csic.es)

The biogeochemical cycle of iodine involves ocean emission, atmospheric transformation, new particle formation, uptake on aerosols, heterogeneous recycling, and deposition on land, where iodine enters terrestrial ecosystems^{1–3}. Iodine is also a key trace element in the endocrine system of mammals, and is essential for the production of hormones in the thyroid gland. In humans, iodine deficiency causes neurological damage and developmental delays in children, and represents the most common cause of preventable mental retardation^{4,5}. Iodine intake

by mammals thus represents the last reservoir in the biogeochemical cycle of iodine. Atmospheric iodine is transported from its dominant oceanic source to the continents, where it is adsorbed onto soil and vegetation. Between ocean emission, soil deposition, and ultimate ingestion by animals and humans, iodine participates in a complex variety of physical and chemical atmospheric processes¹. Laboratory studies have demonstrated the oceanic emission of hypoiodous acid (HOI) and molecular iodine (I_2) following the deposition of tropospheric ozone (O_3) to the surface and the subsequent reaction with iodide (I^-) ions^{6,7}. This ocean release of inorganic iodine is estimated to account for 75% of the total source of atmospheric iodine, with the remainder coming from organic iodine (e.g., CH_3I , CH_2I_2 , etc.)⁸. Consequently, an increase in global ocean iodine emissions has been hypothesized in response to the human-driven increase in tropospheric ozone levels during the industrial period⁹. The lack of long-term measurements of atmospheric iodine has so far prevented the study of its evolution in the atmosphere.

In this work iodine and sodium were measured in the upper 130 m of the RECAP (REnland ice Cap Project) ice-core spanning the Industrial Period (i.e., 1750–2011), providing an opportunity to understand changes in atmospheric iodine levels in the North Atlantic region and their responses to natural and anthropogenic forcings. We find that although the iodine concentrations do not vary significantly from 1750 to 1950, the abrupt increase observed from 1950 to 2010 is linked to enhanced tropospheric ozone pollution and Arctic sub-ice biological activity.

Results

Iodine concentrations in the RECAP ice-core. The Renland ice cap is located on a high elevation plateau on the eastern coast of Greenland (71.30° N, 26.72° W, 2315 m asl) and was the site of a 584-m ice-core drilled to bedrock in 2015. The Renland iodine record displays mean concentrations and deposition fluxes of $\sim 0.023 \text{ ng g}^{-1}$ ($\sigma = 0.009$) and $10 \mu\text{g m}^{-2} \text{ year}^{-1}$ ($\sigma = 4$), respectively (Fig. 1). Iodine concentrations were stable from the onset of the Industrial Period (1750 Common Era, hereafter C.E.) to 1940 C.E., followed by a drop to values of 0.01 ng g^{-1} during the 1940s (Fig. 1). Since the 1950s, iodine concentrations have risen nearly 4-fold, reaching average values of 0.038 ng g^{-1} during the past decade (2001–2011). Iodine fluxes have doubled from 1750 to 2010, and tripled from 1950 to 2010.

We now turn to the origin of the observed iodine trend. The Renland ice cap is primarily influenced by the Nordic seas and North Atlantic open waters. There is a weak statistical relationship between iodine and sodium levels, significant at the 90% level, from 1950 to 1989 but not from 1990 to 2011 (Table 1; Supplementary Figure 1). Iodine and sodium are both emitted from the ocean surface, but sodium also has a potential winter

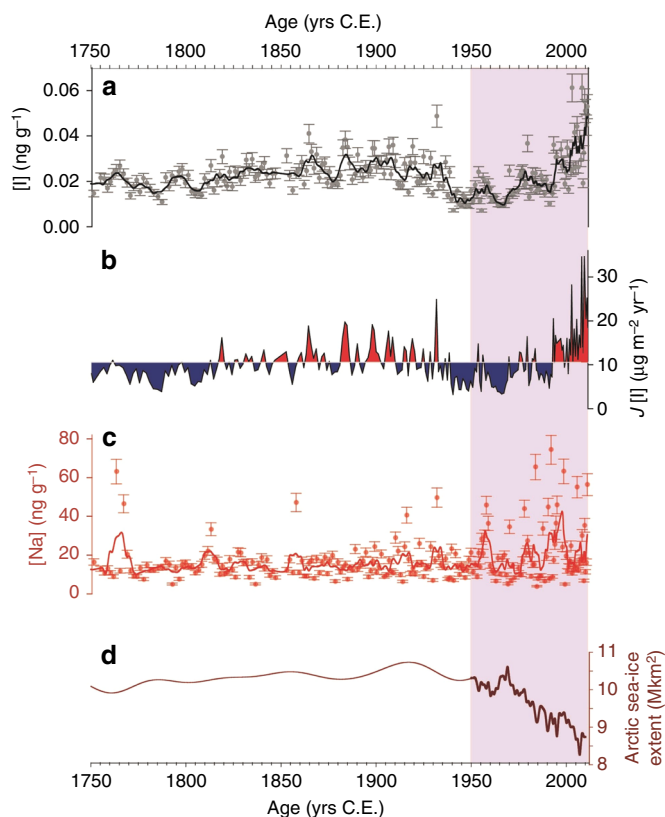


Fig. 1 Time series of geochemical elements in the Renland ice-core during the Industrial Period. **a** Iodine [I] concentration and standard deviation, **b** positive (red) and negative (blue) variation of iodine depositional fluxes $J[I]$ with respect to the 1750–2010 average and **c** sodium [Na] concentrations and standard deviation from Renland ice core (black and red lines represent the 5-samp. running averages for iodine and sodium, respectively); **d** Arctic sea ice extent reconstruction (thin line from Kinnard et al.⁵⁴ and thick line from Rienecker et al.⁵⁵). The shaded area represents the period 1950–2011 shown in Fig. 2

Table 1 Correlation coefficients between iodine concentration and other parameters

	[I]	[Na]	$J(I)$	SST	$E_{\text{sea ice}}$	O_3	B_{prod} (1979–1989)	$Th_{\text{sea ice}}$ (1979–1989)
1950–1989								
[I]								
ρ	1	0.296	0.392*	−0.35*	−0.343*	0.362*	0.384	−0.278
Sig.		0.075	0.017	0.034	0.038	0.028	0.243	0.408
1990–2011								
[I]								
ρ	1	0.207	0.003	0.468*	−0.311	0.136	0.647**	−0.677**
Sig.		0.369	0.991	0.032	0.182	0.567	0.002	0.001

ρ Pearson's correlation coefficient, Sig. significance (*significance < 0.05, **significance < 0.01 highlighted in bold font)

1950–1989 and 1990–2011 correlation coefficients between iodine concentrations [I] in the Renland ice-core and annually averaged: Renland ice-core sodium concentration [Na], modeled iodine emission fluxes emitted from the North Atlantic Ocean $J(I)$, sea surface temperature (SST) in the North Atlantic region⁵⁵, sea ice extent ($E_{\text{sea ice}}$) in the Arctic region⁵⁵, modeled ozone in the North Atlantic region, biological production²² (B_{prod}), and sea ice thickness ($Th_{\text{sea ice}}$) in the Arctic region^{22, 23}

emission mechanism via saltation over the sea ice surface¹⁰. The weak iodine–sodium correlation since 1950 C.E. suggests that the recent iodine variability since 1950 C.E. cannot be attributed to natural processes, such as the atmospheric transport of sea salts. In addition, the iodine–sodium ratio in the Renland ice-core is two orders of magnitude higher than that in seawater¹¹ (Supplementary Figure 1).

Oceanic emissions of HOI and I₂, the main source of global atmospheric iodine, depend on surface ozone concentrations^{6,7,9}. We note that the sharp increase in iodine concentrations since 1950 has occurred in a period when tropospheric ozone levels have increased globally. The longest quantitative ozone record in Europe indicates that ozone doubled between 1950 and 2000 and has been stable since 2000^{12,13}. Results from the chemistry-climate model CAM-Chem (Community Atmospheric Model with chemistry^{14,15}; see Methods) show a 33% increase in ocean iodine emissions over the North Atlantic since 1950 in response to a 30% ozone increase during this period (Fig. 2). Over the same period, a baseline simulation without the ozone-induced emission of iodine from the oceans yields a constant iodine emission flux that is 10 times lower than the above results (Fig. 2). During the 1950–1989 period, the iodine concentrations in the ice-core increase significantly with increasing ocean iodine emissions and tropospheric ozone in the North Atlantic ($\rho = 0.392$, $s = 0.017$ and $\rho = 0.362$, $s = 0.028$, respectively ($\rho =$ Pearson's correlation coefficient, $s =$ significance)). The estimated decreases in ozone precursor emissions over North America and Europe during the 1940s¹⁶ suggest a similar link during the concurrent observed ice-core iodine decrease. Overall, this suggests that ozone-driven

ocean emissions of iodine may have controlled the variability of atmospheric iodine levels during the 1950–1989 period. Note that the increase in atmospheric iodine levels followed by deposition to ice covered areas would in turn make the local heterogeneous processing and recycling of iodine in ice/snow more efficient, as recently measured in the Arctic^{17,18}. Interestingly, during the period from 1990 to 2011, iodine concentrations increase despite stable atmospheric ozone concentrations (no significant correlation: $\rho = 0.136$, $s = 0.567$, see Table 1), indicating a different forcing mechanism for iodine emission during the past two decades.

Discussion

Present-day iodine sources in coastal polar regions are believed to mainly be related with biological production under sea ice¹⁸ and with abiotic ice surface photochemistry^{17,19,20}. The polar amplification of climate change has contributed to a rapid reduction of the Arctic sea ice extent in recent decades (Fig. 1). Arctic sea ice is also increasingly thinning and becoming dominated by thinner and younger sea ice, leading to conditions similar to those found in coastal Antarctica, where the comparatively thinner sea ice allows a more efficient diffusion and release of biologically produced iodine²¹. These recent changes have modified Arctic Ocean ecology by increasing the frequency and extent of sub-ice phytoplankton blooms over the past two decades²². We found that iodine concentrations since 1990 are most strongly correlated with the thinning of Arctic sea ice ($\rho = -0.677$; $s = 0.001$) and Arctic sub-ice biological productivity ($\rho = 0.647$; $s = 0.002$) (Fig. 2; Table 1). Therefore, atmospheric iodine levels in this region may

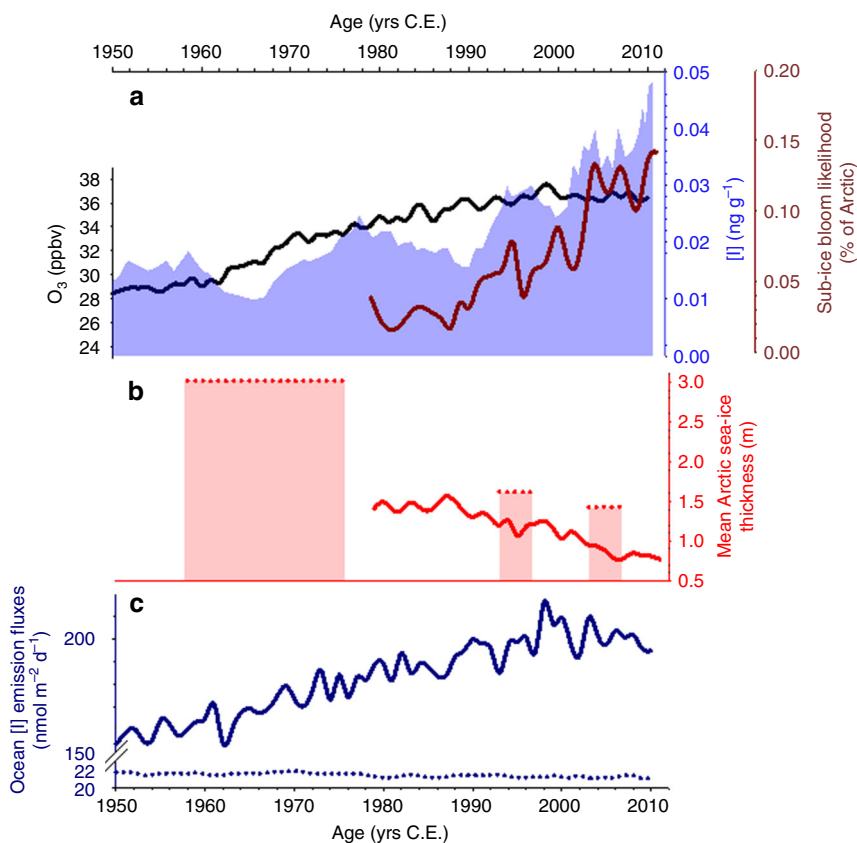


Fig. 2 Iodine concentration evolution and forcing mechanisms for the period 1950–2011. **a** Iodine concentration (blue area); ozone annually averaged over the North Atlantic region (latitude: 20° N–70° N, longitude = 75° W–0°) (dark line) and evolution of the pan-Arctic likelihood of sub-ice blooms in late spring and early summer (May–June–July) over time²² (red line); **b** mean Arctic sea ice thickness, red line from Horvat et al.²² and red dots from Kwok et al.²³; **c** modeled ocean emission fluxes of iodine with (solid line) and without (dotted line) the implementation of the ozone-induced iodine emission mechanism

have been significantly influenced by the enhanced sub-ice biological production of iodine since the 1990s. Considering this dynamic, we find no significant correlation between iodine concentrations and sea ice thickness before 1990 ($\rho = -0.278$; $s = 0.408$). Thicker Arctic sea ice for the period 1958–1976²³ (Fig. 2) most likely reduced the ice permeability, hindering the sub-ice biologically related iodine emissions^{18,24}. In contrast, since 1990, iodine correlates well with the mean late spring–early summer Arctic sea ice thickness ($\rho = -0.677$; $s = 0.001$). The abrupt decrease in the Arctic sea ice thickness below 1.5 m since 1990 (Fig. 2) would ease the propagation of sunlight that ultimately controls the iodine production via algal oxidative stress. This would result in higher iodine excretion rates from Arctic sub-ice algal populations, and a reduced blocking layer due to the more porous fresh ice cap. The high reported values of sea ice thickness before 1960 (Fig. 1) could also account for the decrease in the observed iodine levels during the 1940s and 1950s decades. The attribution to sub-ice Arctic algae blooms is supported by an “off-line” calculation of the resulting iodine flux as a function of seasonal ice fraction, biological activity underneath the sea ice and solar zenith angle. This estimation shows that the contribution of the iodine flux from sub-ice algae to the total iodine emission has increased from 5% in 1960 to 29% in 2010 (Supplementary Note 1). Therefore, the interplay between enhanced biological production and sea ice thinning may explain the higher iodine levels found in the Renland ice-core over the past two decades. Other processes affecting the release and transport of reactive atmospheric iodine in the Arctic, such as the abiotic photochemical recycling occurring on the sea ice surface, are very likely to remain constant in time, or even decrease due to the reduction of sea ice extent since it reduces the active area from which this emission may occur.

A final point to consider is the environmental and health implications of the observed rapid rise in iodine since the mid-twentieth century. Higher iodine levels have led to a 25% larger modeled tropospheric ozone destruction rate in the North Atlantic region since 1950 (Supplementary Figure 2). The modeled surface ozone concentration over the North Atlantic is ~10% higher in the 1950–2010 simulation without the natural O₃-iodine feedback mechanism. Our modeled iodine deposition rates in Renland are in good agreement with the observations in the ice-core (Supplementary Figure 3). Our modeling results show that transport of marine iodine and its deposition to the North American and European continents have increased by 38% and 25% respectively, during the past 50 years. The enhancement of iodine deposition over continents and the subsequent adsorption onto soil and vegetation²⁵ is important since it is estimated that 2 billion people worldwide still have insufficient iodine intake^{5,26,27}.

The sustained growth in iodine concentrations in Renland is likely due to human influences on tropospheric ozone and recent global warming in the Arctic. This observation points to a significant increase in the entry of iodine into the ecosystems, which carries important environmental consequences. Enhanced atmospheric iodine levels will likely promote the formation of new ultrafine aerosol particles^{28–32}. The acceleration of tropospheric ozone loss due to higher iodine levels leads to a reduction in the oxidative capacity of the atmosphere and a reduction in the ozone radiative forcing. Indeed, at present, the halogen-mediated depletion of tropospheric ozone, a potent greenhouse gas, is estimated to account for 30% of ozone radiative forcing^{33–35}. The increase in both the formation of ultrafine particles and ozone destruction leads to a cooling effect on the climate. Atmospheric deposition is also a major source of iodine in soils and plants as it enters the food chain through this mechanism²⁵. Therefore, an increasing amount of iodine deposited over the continents since the mid-twentieth century may have led to an increase in human

iodine uptake in some regions. Finally, we note that if iodine concentrations continue to increase, they could have significant impacts on future tropospheric ozone, aerosol formation and human iodine intake.

Methods

The Renland ice-core. The RECAP ice-core was drilled at 71.30° N, 26.72° W (2315 m asl), on the Renland ice cap in Scoresbysund Fjord (Eastern Greenland) in 2015 using the Danish Hans Tausen intermediate drill system. An ice-core 10 cm in diameter was drilled to bedrock, 584 m below the snow surface. The depth range of the Renland ice-core reported here spans the Industrial Period from a 5.5-m ice-core depth (2011 C.E.) to a 130-m ice-core depth (1750 C.E.). The RECAP ice-core chronology is based on annual layer counting using the StratiCounter algorithm³⁶, which accounts for the annual signal in a large array of chemical species³⁷ – including black carbon, calcium, conductivity, ammonium, sodium, dust, water isotope (d¹⁸O, dD, deuterium excess), as well as electrical conductivity records (DEP, ECM); in total 17 data series. The timescale was constrained by five prominent volcanic eruption markers within the considered time interval (Hekla 1947 C.E. at a depth of 50.5 m, Katmai 1912 C.E. at a depth of 68 m, Tambora 1816 C.E. at a depth of 106 m, and Laki 1783 C.E. at a depth of 117 m). Given the volcanic constraints, the uncertainty in the age scale is estimated to be ±2 years through the period discussed here. The density profile was obtained by fitting a three-stage exponential densification model (χ^2 -fit prob = 7.7%) to density measurements ($N = 180$, $\sigma_p = 15 \text{ kg m}^{-3}$) obtained every 55 cm. The annual accumulation rates were calculated from the annual layer thickness, the density profile and a linear thinning function, which was inferred from a Dansgaard and Johnsen³⁸-type ice flow model constrained to well-dated horizons. The average accumulation in the period from 1750 C.E.–present is $447 \text{ kg m}^{-2} \text{ year}^{-1}$ ($1\sigma = 65 \text{ kg m}^{-2} \text{ year}^{-1}$), which is consistent with the Holocene value of 50 cm ice equivalent (i.e. $459 \text{ kg m}^{-2} \text{ year}^{-1}$) reported in a previous work³⁹. The ice-core samples were collected in October–December 2015 using a continuous flow analysis (CFA) system at the University of Copenhagen⁴⁰. One discrete sample was collected for each 55-cm rod of melted ice. Meltwater was collected in pre-cleaned polyethylene tubes, subsequently refrozen and stored shielded from light until analysis. Samples were sent to the IDPA-CNR, University Ca' Foscari of Venice for sodium and iodine determination.

Iodine quantification. Measurements were carried out at the Environmental Analytical Chemistry laboratory of the IDPA-CNR, University Ca'Foscari of Venice. Samples were measured by collision reaction cell-inductively coupled plasma mass spectroscopy (Agilent 7500cx, Agilent, California, USA) using a Scott spray chamber fitted with a Microflow PFA nebulizer (ESI, Omaha, NE, USA). The operational methodology was carried out as described in a previous work⁴¹. Iodine (¹²⁷I) and sodium (²³Na) isotopes were determined, respectively, at a low and medium mass resolution with plasma stability evaluated by the continuous monitoring of ¹²⁹Xe. The sample line was thoroughly cleaned using 2% nitric acid and ultrapure water (UPW, 18.2 MΩ·cm) between each analysis. Instrumental blanks (UPW samples and UPW ice samples from the CFA campaign) were measured throughout the analytical phases. Detection limits of sodium and iodine were respectively 0.8 ppb and 5 ppt—calculated as three times the root mean square of the blank samples. Instrumental-associated errors for iodine and sodium concentration measurements are 10%. Air-to-snow iodine annual fluxes (J_I) were calculated by the following: $J_I = C_I A$, where C_I is the iodine concentration in the ice and A is the annual accumulation rate.

CAM-Chem model setup and validation. The model employed in this work is the global 3-D chemistry-climate model CAM-Chem (version 4)⁴², which is included in the CESM framework (Community Earth System Model). The model setup is based on the CCM1-REFC1 experiment described in a previous work⁴³, but incorporates an updated halogen chemistry scheme for halogens (chlorine, bromine, and iodine)^{14,15,33,44,45}. This model configuration includes an explicit state-of-the-art scheme of iodine emissions (both organic and inorganic) and photochemistry (both gas and particle phase), which explicitly account for chemical transformation during transport from the ocean source to deposition in the Renland region. The iodine chemical scheme includes in addition to a complete gas phase chemical mechanism considering independent photolysis rate coefficients, bi-molecular and termolecular reactions¹⁵, and a parameterized representation of heterogeneous reactions occurring both on sea-salt aerosols and tropospheric ice crystal¹⁴, as well as independent representation of dry and wet deposition (including below-cloud wash-out and ice-uptake) for each inorganic iodine species^{14,15}. These processes change the chemical partitioning of each of the 14 individual inorganic halogen species by calling the chemical solver coupled with the transport module at each time step.

Halogen sources include the photochemical breakdown of five very short-lived bromocarbons ($\text{VSL}^{\text{Br}} = \text{CHBr}_3, \text{CH}_2\text{Br}_2, \text{CH}_2\text{BrCl}, \text{CHBrCl}_2, \text{CHBr}_2\text{Cl}$) and four iodocarbons ($\text{VSL}^{\text{I}} = \text{CHI}_3, \text{CH}_2\text{I}_2, \text{CH}_2\text{IBr}, \text{CH}_2\text{I}_2$), which are naturally emitted from the ocean to the atmosphere following its production by phytoplankton and photochemical processes occurring at ocean surface⁴⁶. Additionally, abiotic oceanic sources of HOI and I₂ have been included in the lowest layer of the model⁹, based

on recent laboratory studies of the oxidation of aqueous iodide by atmospheric ozone deposited on the ocean surface^{6,7}. Therefore, the model includes both organic and inorganic global iodine emission sources.

In this work, CAM-Chem was configured with a horizontal resolution of 1.9° latitude by 2.5° longitude and 26 levels, from the surface to ~40 km (with eight levels above 100 hPa), as in previous studies^{15,44,45}. At the model surface boundary, the zonally averaged distributions of long-lived halocarbons ($LL^{Cl} = CH_3Cl$, CH_3CCl_3 , CCl_4 , CFC-11, CFC-12, CFC-113, HCFC-22, CFC-114, CFC-115, HCFC-141b, HCFC-142b and $LL^{Br} = CH_3Br$, H-1301, H-1211, H-1202, and H-2402) based on the A1 halogen scenario from WMO⁴⁷ are considered, while the surface concentrations of CO_2 , CH_4 , H_2 , and N_2O are specified following a previous work⁴⁸. The model was run in free-running mode⁴² considering prescribed sea surface temperatures (Supplementary Figure 4) and sea ice distributions from 1950 to 2010. Therefore, the model dynamics and transport represent the daily synoptic conditions of the observations, and allows the direct online coupling between the ocean, ice, and atmospheric modules during the 60 years of simulation. To have a reasonable representation of the overall stratospheric circulation, the integrated momentum that would have been deposited above the model top is specified by an upper boundary condition. To evaluate the impact of the increased iodine emissions, all data in the area referred to as the North Atlantic have been averaged between 20° N and 70° N latitude and 75° W–0° longitude. Despite the expected spatial heterogeneities in the oceanic iodine flux due to local changes in SST and wind speed, the increasing trend since the mid-twentieth century is a common feature across the entire ocean.

The model has been extensively compared with available measurements, especially long-term trends of ozone at the surface and in the mid-troposphere^{43,49}. While the model shows very good skill for the recent past, there is a tendency for the model simulation to overestimate ozone prior to the 1970s. This would, in turn, reduce the rate of ozone increase over that period, and would therefore underestimate the iodine response to an ozone change. The effectiveness and importance of each reaction and process included in the chemical mechanism has been evaluated in the global atmosphere both during the day and night^{50,51}, while all the sources and tropospheric mixing ratios of organic and inorganic iodine species have been validated^{8,46}.

The modeled iodine values display a more continuous and less increasing trend than the observed values in the ice-core. The same can be said for the modeled ozone, in comparison to observations from previous works^{12,13}. The differences are most likely because there is difficulty in accurately modeling ozone emissions in the past, when measurements were scarce. Furthermore, the model does not implement online the biological activity underneath the sea ice in the Arctic region, and the sea surface production of CH_2I_2 , $CHCl_2$, and CHI_3 from the reaction of HOI and I_2 with marine dissolved organic matter^{52,53}, although their contribution to the global atmospheric iodine budget is likely to be smaller than that from HOI + I_2 . Therefore, the model is only representative of the ozone-induced inorganic iodine emissions (HOI and I_2) from the North Atlantic Ocean. Hence, these values must be considered as lower limits, because the modeled trend is lower than that registered in the ice-core. This first difference has been already reported in a previous work¹³, suggesting that in order to reproduce the long-term ozone trends, chemistry-climate models should be improved by introducing additional processes that might have climatic impacts.

Data availability. The ice-core and model data that support the findings of this study are available upon request.

Received: 12 September 2017 Accepted: 9 March 2018

Published online: 13 April 2018

References

- Saiz-Lopez, A. et al. Atmospheric chemistry of iodine. *Chem. Rev.* **112**, 1773–1804 (2012).
- Simpson, W. R., Brown, S. S., Saiz-Lopez, A., Thornton, J. A. & Glasow, R. Tropospheric halogen chemistry: sources, cycling, and impacts. *Chem. Rev.* **115**, 4035–4062 (2015).
- Fuge, R. & Johnson, C. C. The geochemistry of iodine—a review. *Environ. Geochem. Health* **8**, 31–54 (1986).
- de Benoist, B., Andersson, M., Egli, L., Takkouche, B. & Allen, H. *Iodine Status Worldwide. World Health Organization Global Database on Iodine Deficiency* (WHO Library Cataloguing-in-Publication Data, Geneva, 2004).
- Zimmermann, M. B., Jooste, P. L. & Pandav, C. S. Iodine-deficiency disorders. *Lancet* **372**, 1251–1262 (2008).
- Carpenter, L. J. et al. Atmospheric iodine levels influenced by sea surface emissions of inorganic iodine. *Nat. Geosci.* **6**, 108–111 (2013).
- MacDonald, S. M. et al. A laboratory characterisation of inorganic iodine emissions from the sea surface: dependence on oceanic variables and parameterisation for global modelling. *Atmos. Chem. Phys.* **14**, 5841–5852 (2014).
- Prados-Roman, C. et al. Iodine oxide in the global marine boundary layer. *Atmos. Chem. Phys.* **15**, 583–593 (2015).
- Prados-Roman, C. et al. A negative feedback between anthropogenic ozone pollution and enhanced ocean emissions of iodine. *Atmos. Chem. Phys.* **15**, 2215–2224 (2015).
- Rhodes, R. H., Yang, X., Wolff, E. W., McConnell, J. R. & Frey, M. M. Sea ice as a source of sea salt aerosol to Greenland ice cores: a model-based study. *Atmos. Chem. Phys.* **17**, 9417–9433 (2017).
- Turekian, K. K. *Oceans*, Vol. 120 (Prentice-Hall, Englewood Cliffs, NJ, 1968).
- Myhre, G. et al. in *Climate Change 2013: The Physical Science Basis. Contribution of Working Group I to the Fifth Assessment Report of the Intergovernmental Panel on Climate Change* (eds Stocker, T. F. et al.) Ch. 8 (Cambridge University Press, Cambridge and New York, 2013).
- Cooper, O. R. et al. Global distribution and trends of tropospheric ozone: an observation-based review. *Elementa* **2**, 29 (2014).
- Saiz-Lopez, A. et al. Injection of iodine to the stratosphere. *Geophys. Res. Lett.* **42**, 6852–6859 (2015).
- Saiz-Lopez, A. et al. Iodine chemistry in the troposphere and its effect on ozone. *Atmos. Chem. Phys.* **14**, 13119–13143 (2014).
- Hoesly, R. M. et al. Historical (1750–2014) anthropogenic emissions of reactive gases and aerosols from the Community Emission Data System (CEDS). *Geosci. Model Dev. Discuss.* **2017**, 1–41 (2017).
- Raso, A. R. W. et al. Active molecular iodine photochemistry in the Arctic. *Proc. Natl. Acad. Sci. USA* **114**, 10053–10058 (2017).
- Saiz-Lopez, A., Blaszcak-Boxe, C. S. & Carpenter, L. J. A mechanism for biologically induced iodine emissions from sea ice. *Atmos. Chem. Phys.* **15**, 9731–9746 (2015).
- Kim, K. et al. Production of molecular iodine and tri-iodide in the frozen solution of iodide: implication for polar atmosphere. *Environ. Sci. Technol.* **50**, 1280–1287 (2016).
- Gálvez, O., Baeza-Romero, M. T., Sanz, M. & Saiz-Lopez, A. Photolysis of frozen iodate salts as a source of active iodine in the polar environment. *Atmos. Chem. Phys.* **16**, 12703–12713 (2016).
- Saiz-Lopez, A. & Blaszcak-Boxe, C. S. The polar iodine paradox. *Atmos. Environ.* **145**, 72–73 (2016).
- Horvat, C. et al. The frequency and extent of sub-ice phytoplankton blooms in the Arctic Ocean. *Sci. Adv.* **3**, e1601191 (2017).
- Kwok, R. & Rothrock, D. A. Decline in Arctic sea ice thickness from submarine and ICESat records: 1958–2008. *Geophys. Res. Lett.* **36**, L15501 (2009).
- Spolaor, A. et al. Halogen-based reconstruction of Russian Arctic sea ice area from the Akademii Nauk ice core (Severnaya Zemlya). *Cryosphere* **10**, 245–256 (2016).
- Whitehead, D. C. The distribution and transformations of iodine in the environment. *Environ. Intern.* **10**, 321–339 (1984).
- Li, M. & Eastman, C. J. The changing epidemiology of iodine deficiency. *Nat. Rev. Endocrinol.* **8**, 434 (2012).
- Saunders, R. W. & Saiz-Lopez, A. in *Comprehensive Handbook of Iodine: Nutritional, Biochemical, Pathological and Therapeutic Aspects*. (eds Preedy, V. R. et al.) 71–82 (Academic Press, Oxford, 2009).
- Saiz-Lopez, A. & von Glasow, R. Reactive halogen chemistry in the troposphere. *Chem. Soc. Rev.* **41**, 6448–6472 (2012).
- Allan, J. D. et al. Iodine observed in new particle formation events in the Arctic atmosphere during ACCACIA. *Atmos. Chem. Phys.* **15**, 5599–5609 (2015).
- Roscoe, H. K. et al. Particles and iodine compounds in coastal Antarctica. *J. Geophys. Res.* **120**, 7144–7156 (2015).
- O'Dowd, C. D. et al. Marine aerosol formation from biogenic iodine emissions. *Nature* **417**, 632–636 (2002).
- Sipilä, M. et al. Molecular-scale evidence of aerosol particle formation via sequential addition of HIO_3 . *Nature* **537**, 532–534 (2016).
- Saiz-Lopez, A. et al. Estimating the climate significance of halogen-driven ozone loss in the tropical marine troposphere. *Atmos. Chem. Phys.* **12**, 3939–3949 (2012).
- Hossaini, R. et al. Efficiency of short-lived halogens at influencing climate through depletion of stratospheric ozone. *Nat. Geosci.* **8**, 186–190 (2015).
- Sherwen, T. et al. Iodine's impact on tropospheric oxidants: a global model study in GEOS-Chem. *Atmos. Chem. Phys.* **16**, 1161–1186 (2016).
- Winstrup, M. et al. An automated approach for annual layer counting in ice cores. *Clim. Past* **8**, 1881–1895 (2012).
- Winstrup, M. in *Proceedings of the 30th AAI Conference on Artificial Intelligence and the 28th Innovative Applications of Artificial Intelligence Conference 12–17 February 2016, Phoenix, AZ* (eds Yeh, P. Z. & Crawford, J.) 4053 (AAAI Press, Palo Alto, CA, 2016).
- Dansgaard, W. & Johnsen, S. J. A flow model and a time scale for the Ice Core from Camp Century, Greenland. *J. Glaciol.* **8**, 215–223 (2017).
- Hansson, M. E. The Renland ice core. A Northern Hemisphere record of aerosol composition over 120,000 years. *Tellus B* **46**, 390–418 (1994).

40. Bigler, M. et al. Optimization of high-resolution continuous flow analysis for transient climate signals in ice cores. *Environ. Sci. Technol.* **45**, 4483–4489 (2011).
41. Spolaor, A. et al. Speciation analysis of iodine and bromine at picogram-per-gram levels in polar ice. *Anal. Bioanal. Chem.* **405**, 647–654 (2013).
42. Lamarque, J. F. et al. CAM-chem: description and evaluation of interactive atmospheric chemistry in the Community Earth System Model. *Geosci. Model Dev.* **5**, 369–411 (2012).
43. Tilmes, S. et al. Representation of the Community Earth System Model (CESM1) CAM4-chem within the Chemistry-Climate Model Initiative (CCMI). *Geosci. Model Dev.* **9**, 1853–1890 (2016).
44. Fernandez, R. P., Salawitch, R. J., Kinnison, D. E., Lamarque, J. F. & Saiz-Lopez, A. Bromine partitioning in the tropical tropopause layer: implications for stratospheric injection. *Atmos. Chem. Phys.* **14**, 13391–13410 (2014).
45. Fernandez, R. P., Kinnison, D. E., Lamarque, J. F., Tilmes, S. & Saiz-Lopez, A. Impact of biogenic very short-lived bromine on the Antarctic ozone hole during the 21st century. *Atmos. Chem. Phys.* **17**, 1673–1688 (2017).
46. Ordóñez, C. et al. Bromine and iodine chemistry in a global chemistry-climate model: description and evaluation of very short-lived oceanic sources. *Atmos. Chem. Phys.* **12**, 1423–1447 (2012).
47. WMO (World Meteorological Organization). *Scientific Assessment of Ozone Depletion: 2010, Global Ozone Research and Monitoring Project—Report No. 52* 516pp (World Meteorological Organization, Geneva, Switzerland, 2011).
48. Meinshausen, M. et al. The RCP greenhouse gas concentrations and their extensions from 1765 to 2300. *Clim. Change* **109**, 213–241 (2011).
49. Lamarque, J. F. et al. Historical (1850–2000) gridded anthropogenic and biomass burning emissions of reactive gases and aerosols: methodology and application. *Atmos. Chem. Phys.* **10**, 7017–7039 (2010).
50. Saiz-Lopez, A. & Fernandez, R. P. On the formation of tropical rings of atomic halogens: causes and implications. *Geophys. Res. Lett.* **43**, 2928–2935 (2016).
51. Saiz-Lopez, A. et al. Nighttime atmospheric chemistry of iodine. *Atmos. Chem. Phys.* **16**, 15593–15604 (2016).
52. Coleman, L., Varghese, S., Tripathi, O. P., Jennings, S. G. & O’Dowd, C. D. Regional-scale ozone deposition to North-East Atlantic Waters. *Adv. Meteorol.* **2010**, 16 (2010).
53. Martino, M., Mills, G. P., Woeltjen, J. & Liss, P. S. A new source of volatile organoiodine compounds in surface seawater. *Geophys. Res. Lett.* **36**, L01609 (2009).
54. Kinnard, C. et al. Reconstructed changes in Arctic sea ice over the past 1,450 years. *Nature* **479**, 509–512 (2011).
55. Rienecker, M. M. et al. MERRA: NASA’s Modern-Era Retrospective Analysis for Research and Applications. *J. Clim.* **24**, 3624–3648 (2011).

Acknowledgements

This work was supported by the Consejo Superior de Investigaciones Científicas (CSIC) of Spain. The National Center for Atmospheric Research (NCAR) is funded by the National Science Foundation (NSF). Computing resources were provided by the Climate Simulation Laboratory at NCAR’s Computational, and the Information Systems Laboratory (CISL), sponsored by the NSF, provided computing resources. The CESM project (which includes CAM-Chem) is supported by the NSF and the office of Science

(BER) of the US Department of Energy. The RECAP ice coring effort was financed by the Danish Research Council through a Sapere Aude grant, the NSF through the Division of Polar Programs, the Alfred Wegener Institute, and the European Research Council under the European Community’s Seventh Framework Programme (FP7/2007–2013)/ERC grant agreement 610055 through the Ice2Ice project and the Early Human Impact project (267696). This study has received funding from the European Research Council Executive Agency under the European Union’s Horizon 2020 Research and innovation programme (Project “ERC-2016-COG 726349 CLIMAHAL”). J.P.C. was supported by a postdoctoral grant financed by the Spanish Ministry of Economy and Competitiveness (ref FPGI-2013-17443) and currently holds a Juan de la Cierva – Incorporación post-doctoral contract also funded by the Spanish Ministry of Economy and Competitiveness (ref IJCI-2015-23839).

Author contributions

A.S.-L., P.V., and A.S. conceived the experiments. H.A.K., N.M., M.S., J.P.C., C.B., and P.V. collected and measured the samples, and analyzed the resulting data. B.V. and M.W. constructed the chronology. A.S.-L., R.P.F., C.A.C., D.K., and J.-F.L. designed and ran the model experiments. C.H. supplied primary production and sea ice thickness data. All authors interpreted the results and contributed to writing the manuscript.

Additional information

Supplementary Information accompanies this paper at <https://doi.org/10.1038/s41467-018-03756-1>.

Competing interests: The authors declare no competing interests.

Reprints and permission information is available online at <http://npg.nature.com/reprintsandpermissions/>

Publisher’s note: Springer Nature remains neutral with regard to jurisdictional claims in published maps and institutional affiliations.



Open Access This article is licensed under a Creative Commons Attribution 4.0 International License, which permits use, sharing, adaptation, distribution and reproduction in any medium or format, as long as you give appropriate credit to the original author(s) and the source, provide a link to the Creative Commons license, and indicate if changes were made. The images or other third party material in this article are included in the article’s Creative Commons license, unless indicated otherwise in a credit line to the material. If material is not included in the article’s Creative Commons license and your intended use is not permitted by statutory regulation or exceeds the permitted use, you will need to obtain permission directly from the copyright holder. To view a copy of this license, visit <http://creativecommons.org/licenses/by/4.0/>.

© The Author(s) 2018