



Regressions for estimating muscle parameters in the thoracic and lumbar trunk for use in musculoskeletal modeling

Citation

Anderson, Dennis E., John M. D'Agostino, Alexander G. Bruno, Rajaram K. Manoharan, and Mary L. Bouxsein. 2012. "Regressions for Estimating Muscle Parameters in the Thoracic and Lumbar Trunk for Use in Musculoskeletal Modeling." *Journal of Biomechanics* 45 (1) (January): 66–75. doi:10.1016/j.jbiomech.2011.10.004.

Published Version

10.1016/j.jbiomech.2011.10.004

Permanent link

<http://nrs.harvard.edu/urn-3:HUL.InstRepos:37133655>

Terms of Use

This article was downloaded from Harvard University's DASH repository, and is made available under the terms and conditions applicable to Other Posted Material, as set forth at <http://nrs.harvard.edu/urn-3:HUL.InstRepos:dash.current.terms-of-use#LAA>

Share Your Story

The Harvard community has made this article openly available. Please share how this access benefits you. [Submit a story](#).

[Accessibility](#)

Published in final edited form as:

J Biomech. 2012 January 3; 45(1): 66–75. doi:10.1016/j.jbiomech.2011.10.004.

Regressions for estimating muscle parameters in the thoracic and lumbar trunk for use in musculoskeletal modeling

Dennis E. Anderson^{a,b}, John M. D'Agostino^a, Alexander G. Bruno^{a,c}, Rajaram K. Manoharan^a, and Mary L. Bouxsein^{a,b}

^aCenter for Advanced Orthopaedic Studies, Beth Israel Deaconess Medical Center, Boston, MA, USA

^bDepartment of Orthopedic Surgery, Harvard Medical School, Boston, MA, USA

^cHarvard-MIT Health Sciences and Technology Program, Cambridge, MA, USA

Abstract

Musculoskeletal modeling requires information on muscle parameters such as cross-sectional area (CSA) and moment arms. A variety of previous studies have reported muscle parameters in the trunk based on *in vivo* imaging, but there remain gaps in the available data as well as limitations in the generalizability of such data. Specifically, available trunk muscle CSA data is very limited for older adults, lacking entirely in the thoracic region. In addition, previous studies have made measurements in groups of healthy volunteers or hospital patients who may not be representative of the population in general. Finally, such studies have not reported data for the major muscles connecting the upper limb to the thoracic trunk. In this study, muscle morphology measurements were made for major muscles present in the trunk between vertebral levels T6 and L5 using quantitative computed tomography scans from a community-based sample of 100 men and women aged 36–87. We present regression equations to predict trunk muscle CSA and position relative to the vertebral body in the transverse plane from sex, age, height and weight at vertebral levels T6 to L5. Regressions were also developed for predicting anatomical CSA and muscle moment arms, which were estimated using literature data on muscle line of action. This work thus provides a resource for estimating muscle parameters in the general population for musculoskeletal modeling of the thoraco-lumbar trunk.

Keywords

Trunk Musculature; Cross-sectional Area; Moment Arm Length; Biomechanical Modeling

1. Introduction

There is a need for greater study of the biomechanics of the thoracic spine. Pain in the thoracic spine is common in the general population (Briggs et al. 2009b), as well as in a

© 2011 Elsevier Ltd. All rights reserved.

Please address all correspondence to: Dennis Anderson, Beth Israel Deaconess Medical Center, 330 Brookline Ave, RN115, Boston, MA 02215, Phone: 617-667-5380, Fax: 617-667-7175, danders7@bidmc.harvard.edu.

Conflict of Interest Statement

The authors have no conflict of interest to report.

Publisher's Disclaimer: This is a PDF file of an unedited manuscript that has been accepted for publication. As a service to our customers we are providing this early version of the manuscript. The manuscript will undergo copyediting, typesetting, and review of the resulting proof before it is published in its final citable form. Please note that during the production process errors may be discovered which could affect the content, and all legal disclaimers that apply to the journal pertain.

wide range of occupational settings (Briggs et al. 2009a), but additional research is needed to better understand the factors underlying this pain. Moreover, vertebral fractures, which have a prevalence of 30–50% among adults over age 50 (Melton et al. 1989; Melton et al. 1993), most commonly occur in the mid-thoracic and thoraco-lumbar regions of the spine (Ismail et al. 1999; Van der Kluft et al. 2002; Delmas et al. 2005; Freitas et al. 2008; Melton et al. 1993). Thus, musculoskeletal modeling of the spine may be useful for understanding thoracic spine pain and injury, but the majority of biomechanical models of the spine have focused on the lumbar spine. To address this gap, Iyer et al. (2010) have recently developed a model for estimating loads on the thoraco-lumbar vertebrae. However, the widespread use of such a model requires the availability of trunk muscle cross-sectional area (CSA) and moment arm data for various populations.

A number of prior studies report *in vivo* muscle morphology in the trunk based on CT (Chaffin et al. 1990; Kumar 1988; McGill et al. 1988; Moga et al. 1993; Németh and Ohlsén 1986) or MRI (Jorgensen et al. 2001; Marras et al. 2001; McGill et al. 1993; Reid et al. 1987; Seo et al. 2003; Tracy et al. 1989) scans. However, limitations in subject selection reduce their usefulness and generalizability. The subjects in prior studies of trunk muscle morphology fall into two general categories: healthy volunteers (Chaffin et al. 1990; Jorgensen et al. 2001; Marras et al. 2001; McGill et al. 1993; Reid et al. 1987; Seo et al. 2003) or patients who underwent a CT or MRI scan for diagnostic purposes (Kumar 1988; McGill et al. 1988; Moga et al. 1993; Németh and Ohlsén 1986; Tracy et al. 1989). Furthermore, many of these studies included only young or older subjects (Jorgensen et al. 2001; Marras et al. 2001; Németh and Ohlsén 1986; Reid et al. 1987; McGill et al. 1993), and/or included only men or women (Chaffin et al. 1990; McGill et al. 1988; Reid et al. 1987; Tracy et al. 1989; McGill et al. 1993). Thus, the data in previous studies may not be generalizable to wider populations. In addition, many studies focus on the lumbar musculature only (Chaffin et al. 1990; McGill et al. 1988; Németh and Ohlsén 1986; Reid et al. 1987; Seo et al. 2003; Tracy et al. 1989), and there is limited muscle morphology data available in the thoracic trunk. In particular, muscle CSA data is lacking in the thoracic region for older adults. Finally, such studies have not previously reported on the morphology of several major muscles connecting the upper limb to the thoracic trunk.

Our goal was to develop a means for estimating trunk muscle morphology for major muscles present between vertebral levels T6 and L5 that would be applicable to musculoskeletal modeling in a wide variety of individuals. To do so, we measured trunk muscle morphology in a community-based sample of men and women across a wide range of ages, and developed regression equations with trunk muscle morphology as dependent variables and age, sex, height and body mass as independent variables.

2. Methods

2.1. Subjects

We randomly selected an age- and sex stratified sample of 100 individuals (51 men, 49 women, Table 1) from 3529 individuals who underwent a quantitative computed tomography (QCT) exam as part of the Framingham Heart Study Offspring and Third Generation Multidetector CT Study (Hoffmann et al. 2008). Subjects were positioned supine with a cushion under the legs, resulting in slight flexion of the hips and knees, and with arms extended above the head, and scanning was performed using a Lightspeed Ultra scanner (General Electric, Milwaukee, WI). Scans included a chest scan which imaged approximately thoracic vertebral levels T7 – T11 and an abdominal scan which imaged approximately vertebral levels L2 – L5. Scans had a slice thickness of 2.5 cm and a nominal in-plane pixel size of 0.68×0.68 mm. This study was approved by the institutional review boards of Boston University and Beth Israel Deaconess Medical Center.

2.2. Measurement of trunk muscle morphology

Measurements of muscle CSA and position relative to the vertebral body were made from the transverse QCT scan plane at mid-vertebral body for vertebral levels T6 through L5. Muscle morphology measurements were made for 11 muscles or muscle groups at different vertebral levels as noted in Table 2. Muscle boundaries at each vertebral level were manually traced using custom software, as was the vertebral body, and areas and centroid locations were determined. There were five trained readers who took part in muscle measurements, with a single measurement obtained for each muscle. The orientations of the anterior-posterior (AP) and medial-lateral (ML) axes in the scan plane were defined using the average angle formed in the scan plane by left and right side muscle pairs. Muscle position was calculated as the difference between muscle and vertebral body centroid locations in the ML direction (ML-d) and in the AP direction (AP-d) as shown in Fig. 1. Muscles on the lateral and anterior aspects of the trunk, that is pectoralis major, rectus abdominis, serratus anterior, latissimus dorsi, external oblique and internal oblique, would sometimes be partially or fully outside of the QCT image field of view (Fig. 1). In these cases, the muscle in question was not measured.

Measurements of muscle CSA and position in the QCT transverse scan plane may not be directly applicable to musculoskeletal modeling, as the line of action of many muscles is not perpendicular to the transverse plane. In order to provide data that may be more directly applicable to musculoskeletal modeling, literature estimates of muscle lines of action were used to estimate anatomical cross-sectional area (ACSA) from measured muscle CSA, muscle moment arm about the AP axis (MA-X) from measured ML-d distance, and muscle moment arm about the ML axis (MA-Y) from measured AP-d distance. Lines of action for pectoralis major, serratus anterior and trapezius were estimated from the muscle paths in the upper limb model of Garner and Pandy (Garner and Pandy 1999, 2001) based on the Visible Human Project. Lines of action for all other muscles were taken from several literature sources (Dumas et al. 1991; Macintosh and Bogduk 1986; Macintosh and Bogduk 1991; Santaguida 1991) as compiled by McGill et al (1993). ACSA, MA-X and MA-Y were estimated from the scan plane measurements as:

$$ACSA = CSA \times \cos(\theta) \quad (\text{Equation 1a})$$

$$MA - X = ML - d \times \cos(\theta) \quad (\text{Equation 1b})$$

$$MA - Y = AP - d \times \cos(\theta) \quad (\text{Equation 1c})$$

where θ was the angle between the normal to the scan plane and the estimated muscle line of action.

2.3. Regressions

Linear regression analysis was used to determine regression coefficients to predict muscle CSA, muscle position (ML-d and AP-d), ACSA and moment arms (MA-X and MA-Y) from age, sex, height and body mass at each vertebral level. Previous studies reporting regression equations for muscle parameters have used a wide variety of anthropometric measures as independent variables (Chaffin et al. 1990; Jorgensen et al. 2001; Marras et al. 2001; Moga et al. 1993; Reid et al. 1987; Seo et al. 2003; Tracy et al. 1989), and it is not clear which would be most generally predictive of muscle parameters. Height (Chaffin et al. 1990;

Jorgensen et al. 2001; Moga et al. 1993) and body mass (Chaffin et al. 1990; Jorgensen et al. 2001; Marras et al. 2001; Moga et al. 1993; Reid et al. 1987; Seo et al. 2003; Tracy et al. 1989) have been used previously in regressions of muscle parameters, and furthermore are commonly measured even when more specific anthropometric data are not. Thus, height and body mass were chosen as relevant measures of body size that would be widely available for specific individuals. Left and right side muscle morphology measurements were averaged within each subject, giving a single measurement per subject for each muscle and level. If only one side was present, it alone was used as the measurement. All four independent variables (age, sex, height and body mass) were included in the model, regardless of statistical significance. Thus, the regression equation is:

$$\text{Muscle Parameter} = C_1 + C_s \times \text{Sex} + C_A \times \text{Age} + C_H \times \text{Height} + C_M \times \text{Mass} \quad (\text{Equation 2})$$

where C 's are regression coefficients, Sex is sex (male = 0, female = 1), Age is age in years, Height is height in cm and Mass is body mass in kg. Muscle Parameter is CSA (cm²), ML-d (cm), AP-d (cm), ACSA (cm²), MA-X (cm) or MA-Y (cm). Values returned for ML-d and MA-X are always positive, indicating the absolute ML distance or moment arm for either a left- or right-side muscle. Values for AP-d and MA-Y may be positive or negative, with positive values indicating a muscle anterior to the vertebral body centroid and negative values indicating a muscle posterior to the vertebral body centroid. To provide a measure of the fit and error associated with the regressions, coefficient of determination (R^2) and standard error of the estimate (SEE) are reported for each regression. Regressions were calculated using JMP (SAS Institute, Inc., Cary, NC).

Because of the CT scanning protocol used, the sample contained only 18, 11, and 3 individuals in whom the scans extended to levels T6, T12 and L1, respectively. Thus, because of the limited sample, data from these levels was not used to create regressions. Rather, mean muscle morphology measurements at T6, T12 and L1 were estimated from the means at other levels using piecewise cubic Hermite interpolation in Matlab (The MathWorks Inc., Natick, MA). By assuming a constant ratio between muscle parameters at adjacent levels, a regression equation for one of these levels may be created by scaling the regression equation from an adjacent level. For example, a T6 regression equation was determined from a T7 regression equation as:

$$\text{T6 regression equation} = (\text{T7 regression equation}) \times \frac{\text{T6 mean (estimated)}}{\text{T7 mean}} \quad (\text{Equation 3})$$

Regression equations for T12 and L1 were determined from equations at T11 and L2, respectively, in the same way. As the regression equations are linear, each regression coefficient is individually scaled by the ratio of the means.

3. Results

Mean muscle CSA, ML-d and AP-d varied with vertebral level (Fig. 2), as did ACSA, MA-X and MA-Y (Fig. 3). Values for means and standard deviations of CSA, ML-d, AP-d, ACSA, MA-X and MA-Y may be found in the online supplemental data. In addition, the supplemental data provides means for men and women separately, and gives the number of subjects measured by muscle and level. Because not all levels were available in all subjects and muscles could sometimes not be measured in levels that were present (e.g. extending outside the image field of view), the number of subjects used for any particular regression ranged from 26 to 99. Excluding the estimates at levels T6, T12 and L1, the regressions

based on the fewest subjects were those for the trapezius at T11, with 26 subjects. The regressions based on the most subjects were those for psoas major, erector spinae and transversospinalis at L4, with 99 subjects. The median number of subjects used to create regressions was 82, and so most regressions reported here were based on more than 80 subjects.

Regression coefficients for estimating muscle CSA and position in the transverse plane are presented in Table 3, and coefficients for estimating muscle ACSA and moment arms are presented in Table 4. The coefficients of determination for muscle CSA varied from $R^2 = 0.04$ to $R^2 = 0.73$, with 20% of regressions having $R^2 < 0.25$, 44% having an R^2 between 0.25 and 0.50, and 36% having an $R^2 > 0.50$. The SEE for muscle CSA varied from 0.46 cm² to 3.19 cm² in absolute terms, and from 15.8% to 57.4% in terms of mean CSA values. The coefficients of determination for ML-d varied from $R^2 = 0.08$ to $R^2 = 0.76$, with 30% of regressions having $R^2 < 0.25$, 33% having an R^2 between 0.25 and 0.50, and 38% having an $R^2 > 0.50$. The SEE for ML-d varied from 0.14 cm to 1.49 cm in absolute terms, and from 5% to 36% in terms of mean ML-d value. The coefficients of determination for AP-d varied from $R^2 = 0.02$ to $R^2 = 0.68$, with 33% of regressions having $R^2 < 0.25$, 36% having an R^2 between 0.25 and 0.50, and 31% having an $R^2 > 0.50$. The SEE for AP-d varied from 0.22 cm to 1.98 cm in absolute terms, and from 5% to 51% of mean AP-d values (excluding latissimus dorsi and psoas major in which moment arm passes from anterior to posterior, resulting in small mean moment arms). As ACSA, MA-X and MA-Y are scaled values of the measured CSA, ML-d and AP-d, respectively, the R^2 values of their regressions were identical to those of the corresponding measurements and their SEE values were scaled versions of the corresponding SEE values.

4. Discussion

The purpose of this study was to use muscle morphology measurements from a community-based sample of men and women to develop a set of regression equations based on age, sex, height and body mass to estimate trunk muscle morphology from T6 – L5. In general, the measured values for muscle CSA and position found here are similar to those reported in previous studies, with some differences likely arising from differences in measurement technique, subject sample characteristics, and muscle classification schemes. For example, this study used a community-based sample of men and women across a wide range of ages, whereas a comparable study by Marras et al. (2001), which reported ACSAs from T8 to S1, was based on a convenience sample of young healthy subjects. Our results were similar to Marras et al., with our ACSAs tending to be smaller, which is reasonable based on the age difference between our subject samples. An important exception to this was the erector spinae, in which Marras et al. reported ACSAs that were much larger than the ACSAs found in this study. This was because the transversospinalis and erector spinae were measured as a single muscle group, whereas in our study they were measured as two separate muscle groups. In fact, grouping of the erector spinae with the transversospinalis may be found in several other reports of muscle parameters as well (Chaffin et al. 1990; Jorgensen et al. 2001; Tracy et al. 1989). Given that these two muscles have different functional roles, it may be important to clearly differentiate the two in future studies. Another study (Kumar 1988) which used men and women over a wide age range reported muscle positions relative to the vertebral body (T7, T12, L3, and L5) that were comparable with those reported in the current study.

A number of previous studies have created regression equations to provide a way of accounting for differences in muscle parameters due to body size (Chaffin et al. 1990; Jorgensen et al. 2001; Marras et al. 2001; Moga et al. 1993; Reid et al. 1987; Seo et al. 2003; Tracy et al. 1989). Compared to previously reported regressions, the regressions reported

here for CSA and ML-d are not generally different in terms of the R^2 or SEE. In fact, R^2 values tend to be higher for the current regressions of CSA than regressions reported previously. However, the AP-d regressions reported here tend to have somewhat lower R^2 and higher SEE than regressions reported previously. There are several possible reasons for these differences, including the fact that this study includes a larger and more varied group of subjects than most previous studies. With the differences in subject sample and methodology, direct comparisons of regression fits and error estimates must be approached with caution. Nonetheless, overall the regressions reported here appear to be similar to previously reported regressions in terms of ability to accurately predict muscle parameters.

A substantial number of the regressions reported here have low R^2 values. This is in keeping with previous studies providing regressions to predict muscle parameters, but it does raise the question of whether there may be better ways to predict muscle parameters. For example, other anthropometric measurements, particularly trunk width and depth, have been used in previous regressions for prediction of muscle parameters (Chaffin et al. 1990; Jorgensen et al. 2001; Marras et al. 2001; Moga et al. 1993; Reid et al. 1987; Tracy et al. 1989). In exploring this question, we found that including other independent variables, such as trunk width and depth, as well as higher order (quadratic) terms, could produce higher R^2 values in many cases. However, the use of more predictor terms or attempting to select the “best” terms raises the risk of overfitting the data (Babyak 2004), that is fitting noise in the sample rather than legitimate trends in the data. Overfitting would negatively affect the ability of the regressions to predict muscle parameters for the general population, which is a primary goal of this study. Thus, in spite of low R^2 values in some cases, the use of four simple independent variables chosen *a priori* improves the generalizability of the regressions presented here.

Adjustments to the muscle data presented here may be desired when applying it to musculoskeletal modeling. Scans were taken with subjects lying in a supine position, and muscle parameters may vary in other positions. For example, rectus abdominis moment arm in the lumbar spine increases by an average of about 30% in upright standing as compared to supine (Jorgensen et al. 2005; McGill et al. 1996), while erector spinae moment arm increases by about 3% in men and 12% in women (McGill et al. 1996). Jorgensen et al. found that both CSA and moment arm of lumbar extensor muscles decreases with increasing forward flexion from a neutral posture as measured with MRI in individuals lying on their sides (Jorgensen et al. 2003a; Jorgensen et al. 2003b). Thus, adjustment for body positions may be warranted when using this data in musculoskeletal models. In addition, estimates of ACSA and moment arms were provided to allow for more direct application of this data to musculoskeletal models. However, it should be recognized that ACSAs and moment arms were calculated using literature information on muscle lines of action. Line of action information is limited for some muscles, and because it is based on limited data it may not be representative of the general population. Thus, there is a need for further studies of muscle lines of action in the trunk, and how they may vary with age, sex and anthropometric variables. By providing regressions for muscle CSA and location in the transverse plane, this study allows users to select other sources for muscle line of action information as available and appropriate.

There are several limitations of this study that should be noted. While the QCT data included both sexes and a range of ages from a community-based sample, the subjects in this population were largely of Caucasian descent, and further studies are needed to determine whether these regressions would apply to individuals of different racial or ethnic backgrounds. In addition, the muscle parameters measured may have been skewed in some way toward smaller individuals, as instances of muscles extending outside the QCT image field of view were more common in larger individuals, and taller individuals were more

likely to be missing vertebral levels in the images. In addition, because of the scanning protocol used, there was not sufficient data for regressions at levels T6, T12 and L1, so regressions at these levels were approximated from adjacent levels. While this paper provides new information on musculature in the mid-thoracic, thoraco-lumbar and lumbar spine, it does not address the upper thoracic spine (i.e., T1–T5). The regressions created used age, sex, height and body mass as independent variables, but it should be noted that these variables are not fully independent of each other. For example, height was higher in men than women, decreased with age, and increased with body mass. Therefore, effects of multicollinearity are likely present in the reported regression equations. This does not reduce the predictive value of the equations, but does limit the ability to deduce the specific contribution of each particular variable to muscle morphology. For this work that was considered acceptable, as the primary purpose of this work was to provide a method to estimate muscle parameters, rather than an analysis of the relationships between muscle morphology and anthropometric measurements.

In conclusion, we present a method for estimating the size and position of trunk muscles from vertebral levels T6 through L5. This represents the first such data reported for a community-based sample including a wide range of vertebral levels (T6–L5) and ages (36 – 87 years), as well as both males and females. The independent variables used, age, sex, height and body mass, are simply obtained and commonly obtained clinically. Thus, this data provides a useful resource for musculoskeletal modeling of the thoraco-lumbar trunk in a wide range of individuals.

Supplementary Material

Refer to Web version on PubMed Central for supplementary material.

Acknowledgments

We acknowledge Dr. Thomas Lang (UCSF Department of Radiology) for development of the software used for muscle analysis. This work was supported by grants from the National Institutes of Health (R01AR053986, R01AR/AG041398, T32AG023480), and by the National Heart, Lung, and Blood Institute (NHLBI) Framingham Heart Study (NIH/NHLBI Contract N01-HC-25195). The contents are solely the responsibility of the authors, and do not necessarily represent the views of the NIH.

References

- Babiyak MA. What you see may not be what you get: a brief, nontechnical introduction to overfitting in regression-type models. *Psychosom Med*. 2004; 66:411–421. [PubMed: 15184705]
- Briggs AM, Bragge P, Smith AJ, Govil D, Straker LM. Prevalence and associated factors for thoracic spine pain in the adult working population: a literature review. *Journal of Occupational Health*. 2009a; 51:177–192. [PubMed: 19336970]
- Briggs AM, Smith AJ, Straker LM, Bragge P. Thoracic spine pain in the general population: prevalence, incidence and associated factors in children, adolescents and adults. A systematic review. *BMC Musculoskelet Disord*. 2009b; 10:77. [PubMed: 19563667]
- Chaffin DB, Redfern MS, Erig M, Goldstein SA. Lumbar muscle size and locations from CT scans of 96 women of age 40–63 years. *Clinical Biomechanics*. 1990; 5:9–16.
- Delmas PD, van de Langerijt L, Watts NB, Eastell R, Genant H, Grauer A, Cahall DL. Underdiagnosis of vertebral fractures is a worldwide problem: the IMPACT study. *Journal of Bone and Mineral Research*. 2005; 20:557–563. [PubMed: 15765173]
- Dumas GA, Poulin MJ, Roy B, Gagnon M, Jovanovic M. Orientation and moment arms of some trunk muscles. *Spine*. 1991; 16:293–303. [PubMed: 1827538]
- Freitas SS, Barrett-Connor E, Ensrud KE, Fink HA, Bauer DC, Cawthon PM, Lambert LC, Orwoll ES. Rate and circumstances of clinical vertebral fractures in older men. *Osteoporosis International*. 2008; 19:615–623. [PubMed: 18038109]

- Garner BA, Pandy MG. A Kinematic Model of the Upper Limb Based on the Visible Human Project (VHP) Image Dataset. *Comput Methods Biomech Biomed Engin.* 1999; 2:107–124. [PubMed: 11264821]
- Garner BA, Pandy MG. Musculoskeletal model of the upper limb based on the visible human male dataset. *Comput Methods Biomech Biomed Engin.* 2001; 4:93–126. [PubMed: 11264863]
- Hoffmann U, Massaro JM, Fox CS, Manders E, O'Donnell CJ. Defining normal distributions of coronary artery calcium in women and men (from the Framingham Heart Study). *American Journal of Cardiology.* 2008; 102:1136–1141. [PubMed: 18940279]
- Ismail AA, Cooper C, Felsenberg D, Varlow J, Kanis JA, Silman AJ, O'Neill TW. Number and type of vertebral deformities: epidemiological characteristics and relation to back pain and height loss. *European Vertebral Osteoporosis Study Group. Osteoporosis International.* 1999; 9:206–213. [PubMed: 10450408]
- Iyer S, Christiansen BA, Roberts BJ, Valentine MJ, Manoharan RK, Boussein ML. A biomechanical model for estimating loads on thoracic and lumbar vertebrae. *Clinical Biomechanics.* 2010; 25:853–858. [PubMed: 20655634]
- Jorgensen MJ, Marras WS, Granata KP, Wiand JW. MRI-derived moment-arms of the female and male spine loading muscles. *Clinical Biomechanics.* 2001; 16:182–193. [PubMed: 11240052]
- Jorgensen MJ, Marras WS, Gupta P. Cross-sectional area of the lumbar back muscles as a function of torso flexion. *Clinical Biomechanics.* 2003a; 18:280–286. [PubMed: 12689777]
- Jorgensen MJ, Marras WS, Gupta P, Waters TR. Effect of torso flexion on the lumbar torso extensor muscle sagittal plane moment arms. *The Spine Journal.* 2003b; 3:363–369. [PubMed: 14588948]
- Jorgensen MJ, Marras WS, Smith FW, Pope MH. Sagittal plane moment arms of the female lumbar region rectus abdominis in an upright neutral torso posture. *Clinical Biomechanics.* 2005; 20:242–246. [PubMed: 15698695]
- Kumar S. Moment arms of spinal musculature determined from CT scans. *Clinical Biomechanics.* 1988; 3:137–144.
- Macintosh JE, Bogduk N. The biomechanics of the lumbar multifidus. *Clinical Biomechanics.* 1986; 1:205–213.
- Macintosh JE, Bogduk N. The attachments of the lumbar erector spinae. *Spine.* 1991; 16:783–792. [PubMed: 1925755]
- Marras WS, Jorgensen MJ, Granata KP, Wiand B. Female and male trunk geometry: size and prediction of the spine loading trunk muscles derived from MRI. *Clinical Biomechanics.* 2001; 16:38–46. [PubMed: 11114442]
- McGill SM, Jucker D, Axler C. Correcting trunk muscle geometry obtained from MRI and CT scans of supine postures for use in standing postures. *Journal of Biomechanics.* 1996; 29:643–646. [PubMed: 8707791]
- McGill SM, Patt N, Norman RW. Measurement of the trunk musculature of active males using CT scan radiography: Implications for force and moment generating capacity about the L4/L5 joint. *Journal of Biomechanics.* 1988; 21:329–341. [PubMed: 3384829]
- McGill SM, Santaguida L, Stevens J. Measurement of the trunk musculature from T5 to L5 using MRI scans of 15 young males corrected for muscle fibre orientation. *Clinical Biomechanics.* 1993; 8:171–178.
- Melton LJ 3rd, Kan SH, Frye MA, Wahner HW, O'Fallon WM, Riggs BL. Epidemiology of vertebral fractures in women. *Am J Epidemiol.* 1989; 129:1000–1011. [PubMed: 2784934]
- Melton LJ 3rd, Lane AW, Cooper C, Eastell R, O'Fallon WM, Riggs BL. Prevalence and incidence of vertebral deformities. *Osteoporosis International.* 1993; 3:113–119. [PubMed: 8481586]
- Moga PJ, Erig M, Chaffin DB, Nussbaum MA. Torso muscle moment arms at intervertebral levels T10 through L5 from CT scans on eleven male and eight female subjects. *Spine.* 1993; 18:2305–2309. [PubMed: 8278851]
- Németh G, Ohlsén H. Moment arm lengths of trunk muscles to the lumbosacral joint obtained *in vivo* with computed tomography. *Spine.* 1986; 11:158–160. [PubMed: 3704803]
- Reid JG, Costigan PA, Comrie W. Prediction of trunk muscle areas and moment arms by use of anthropometric measures. *Spine.* 1987; 12:273–275. [PubMed: 2954223]

- Santaguida, P. MSc Thesis. University of Waterloo; Waterloo: 1991. The Psoas Major Muscle: A three-dimensional anatomical and mechanical study with respect to the spine.
- Seo A, Lee JH, Kusaka Y. Estimation of trunk muscle parameters for a biomechanical model by age, height and weight. *Journal of Occupational Health*. 2003; 45:197–201. [PubMed: 14646276]
- Tracy MF, Gibson MJ, Szypryt EP, Rutherford A, Corlett EN. The geometry of the muscles of the lumbar spine determined by magnetic resonance imaging. *Spine*. 1989; 14:186–193. [PubMed: 2922639]
- Van der Klift M, De Laet CE, McCloskey EV, Hofman A, Pols HA. The incidence of vertebral fractures in men and women: the Rotterdam Study. *Journal of Bone and Mineral Research*. 2002; 17:1051–1056. [PubMed: 12054160]

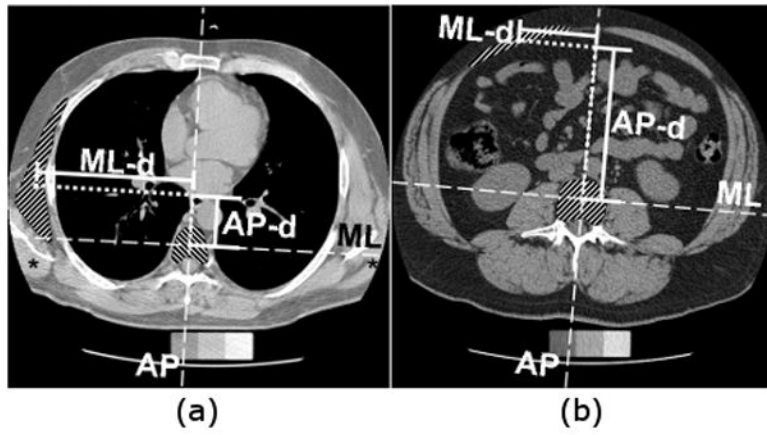


Fig. 1. Measurement of muscle position in transverse plane scans. Position was calculated as the difference between centroid locations of muscle and vertebral body in the ML direction (ML-d) and in the AP direction (AP-d), shown here for (a) the left serratus anterior muscle at the T7 vertebral level, and (b) the left rectus abdominis muscle at the L3 vertebral level. Asterisks (*) denote examples of a muscle (latissimus dorsi) that extends outside the QCT image field of view, and thus was not measured.

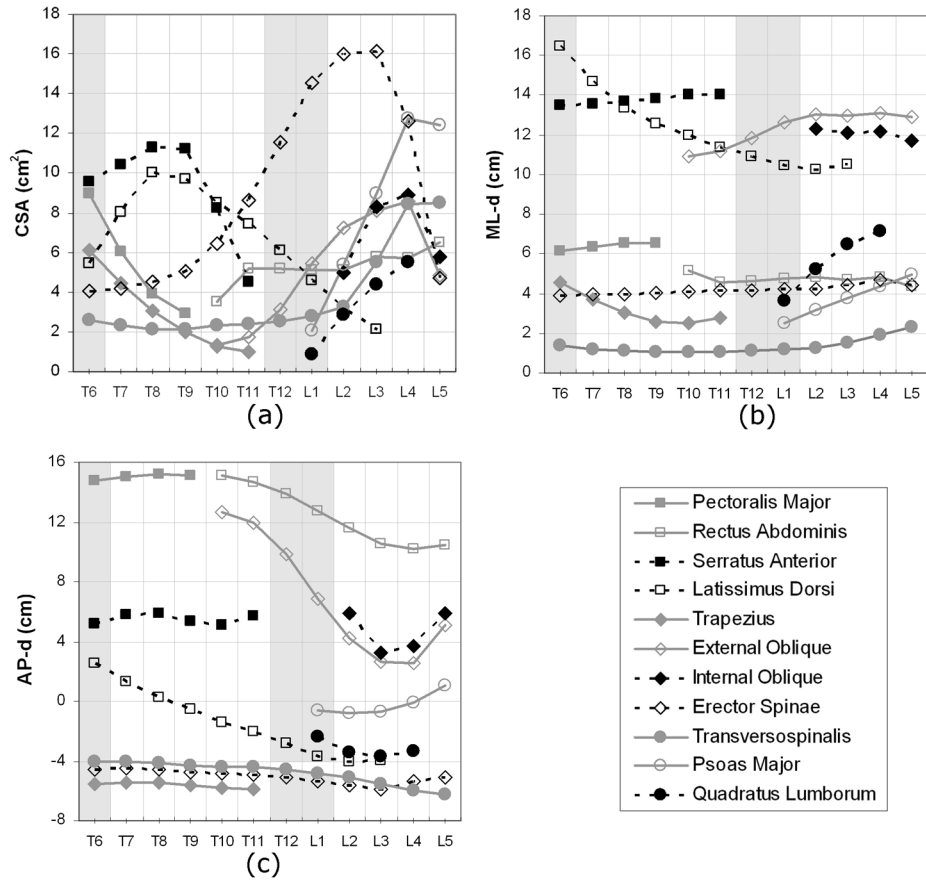


Fig. 2. Mean values of measured (a) muscle CSAs in the transverse plane, (b) position in the medial-lateral direction (ML-d), and (c) position in the anterior-posterior direction (AP-d), for vertebral levels T6 through L5. Note that for AP-d, positive indicates anterior to, and negative indicates posterior to, the center of the vertebral body. Values for shaded levels (T6, T12, L1) were estimated by interpolation or extrapolation.

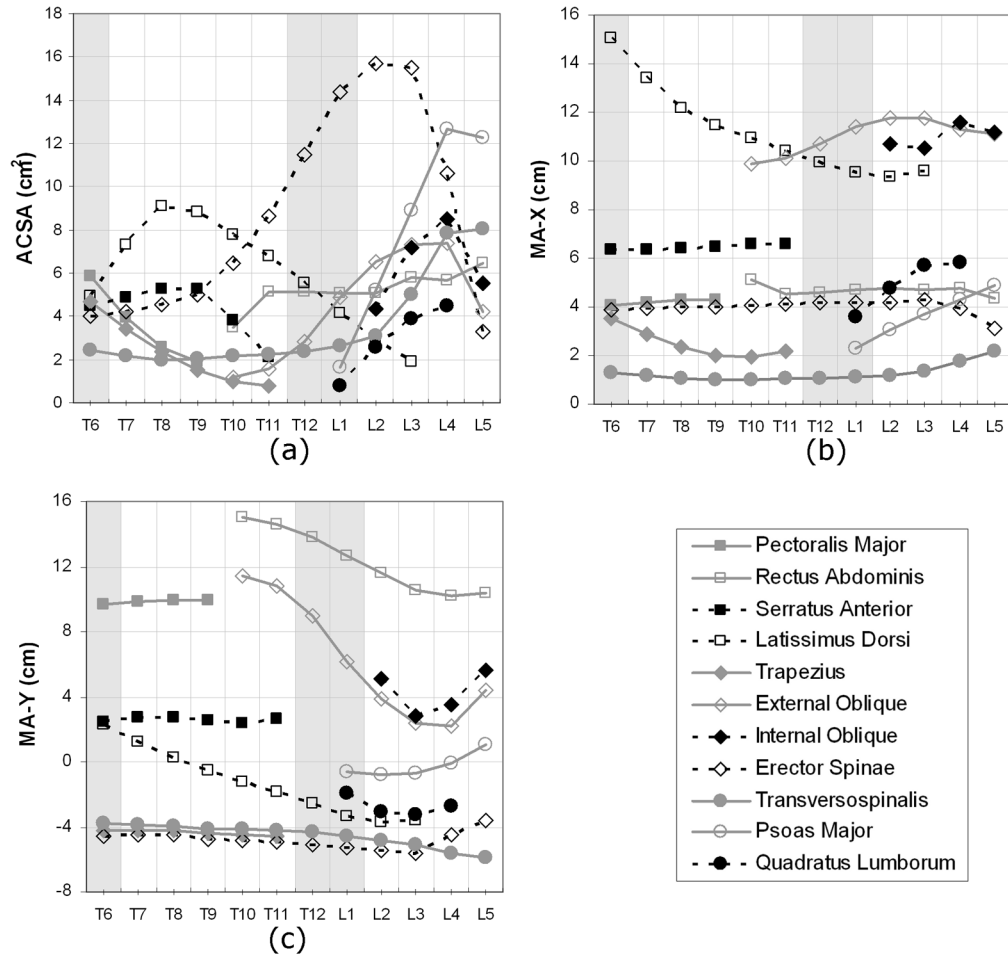


Fig. 3. Mean values of estimated (a) muscle ACSAs, (b) moment arm in the medial-lateral direction (MA-X), and (c) moment arm in the anterior-posterior direction (MA-Y), for vertebral levels T6 through L5. Note that for MA-Y, positive indicates anterior to, and negative indicates posterior to, the center of the vertebral body. Values for shaded levels (T6, T12, L1) were estimated by interpolation or extrapolation.

Table 1

Demographic characteristics of subjects included in the study

	Men (n=51)		Women (n=49)	
	Mean (SD)	Range	Mean (SD)	Range
Age (yrs)	59.4 (14.6)	36–82	58.1 (13.3)	40–87
Height (cm)	177.6 (7.1)	165.1–191.8	162.2 (5.8)	150.5–174.0
Body Mass (kg)	86.3 (11.5)	60.8–116.6	68.4 (13.6)	48.1–117.7

Table 2

Trunk muscles measured from QCT scans at each vertebral level

	T6	T7	T8	T9	T10	T11	T12	L1	L2	L3	L4	L5
Pectoralis Major	X	X	X									
Rectus Abdominis					X	X	X	X	X	X	X	X
Serratus Anterior	X	X	X	X	X	X						
Trapezius	X	X	X	X	X	X						
Latissimus Dorsi	X	X	X	X	X	X	X	X	X	X		
External Oblique					X	X	X	X	X	X	X	X
Internal Oblique									X	X	X	X
Psoas Major								X	X	X	X	X
Erector Spinae	X	X	X	X	X	X	X	X	X	X	X	X
Transversospinalis	X	X	X	X	X	X	X	X	X	X	X	X
Quadratus Lumborum								X	X	X	X	X

Table 3

Regression coefficients for estimating muscle CSA and position in the transverse plane using Equation 2. Coefficients in bold are significant ($p < 0.05$), and R^2 values in bold indicate significant regressions ($p < 0.05$). The regression coefficients for shaded levels (T6, T12, L1) were estimated by scaling the coefficients from the adjacent level. SEE = standard error of the estimate.

	CSA							ML-d							AP-d							
	C_I	C_S	C_A	C_H	C_M	SEE (cm ²)	R^2	C_I	C_S	C_A	C_H	C_M	SEE (cm)	R^2	C_I	C_S	C_A	C_H	C_M	SEE (cm)	R^2	
Pectoralis Major																						
T6	18.98	-4.97	-7.10E-2	-2.00E-2	-3.66E-3	-	-	2.67	0.22	6.52E-3	1.40E-2	7.73E-3	-	-	7.31	-1.72	3.56E-2	9.75E-3	5.67E-2	-	-	-
T7	12.85	-3.36	-4.80E-2	-1.35E-2	-2.48E-3	1.94	0.43	2.75	0.23	6.74E-3	1.44E-2	7.98E-3	0.66	0.08	7.47	-1.75	3.64E-2	9.95E-3	5.79E-2	1.36	0.62	-
T8	-2.65	-1.09	-7.52E-3	5.20E-2	-1.71E-2	1.34	0.29	0.64	-3.10E-2	1.79E-2	1.72E-2	2.50E-2	1.05	0.23	5.30	-1.24	3.31E-2	2.32E-2	5.98E-2	1.52	0.54	-
T9	7.31	-1.29	-6.90E-3	-2.71E-2	1.72E-2	1.10	0.25	2.12	-1.00	8.35E-3	2.51E-2	2.45E-3	1.34	0.23	11.05	-1.42	2.64E-2	-7.59E-3	6.02E-2	1.46	0.49	-
Rectus Abdominis																						
T10	14.23	-2.16	-2.23E-2	-7.90E-2	6.98E-2	1.87	0.33	-2.08	-0.30	6.82E-3	4.17E-2	-3.14E-4	1.26	0.14	14.04	-1.55	1.73E-2	-3.74E-2	9.81E-2	1.38	0.59	-
T11	8.42	-1.76	-7.40E-3	-4.14E-2	7.53E-2	2.13	0.28	6.42	-0.71	-6.00E-3	-1.99E-2	3.24E-2	0.82	0.30	19.56	-1.50	4.55E-3	-8.04E-2	1.32E-1	1.42	0.58	-
T12	8.38	-1.75	-7.37E-3	-4.12E-2	7.49E-2	-	-	6.52	-0.72	-6.10E-3	-2.02E-2	3.29E-2	-	-	18.49	-1.42	4.30E-3	-7.60E-2	1.25E-1	-	-	-
L1	0.51	-1.81	-7.97E-3	2.00E-2	4.06E-2	-	-	-1.68	-0.23	1.47E-2	2.41E-2	2.34E-2	-	-	10.91	-1.57	-6.19E-3	-2.27E-2	9.78E-2	-	-	-
L2	0.50	-1.80	-7.94E-3	1.99E-2	4.04E-2	1.37	0.52	-1.70	-0.23	1.50E-2	2.45E-2	2.38E-2	0.61	0.51	9.96	-1.43	-5.65E-3	-2.07E-2	8.92E-2	1.72	0.44	-
L3	6.37	-2.12	-4.15E-2	-4.52E-3	5.16E-2	1.40	0.58	1.50	1.02E-2	5.46E-3	2.50E-3	3.35E-2	0.62	0.37	6.41	-1.47	2.40E-2	-3.09E-2	1.20E-1	1.61	0.59	-
L4	1.97	-1.48	-2.38E-2	1.27E-2	4.88E-2	1.34	0.55	-1.15	0.25	1.33E-2	1.13E-2	4.13E-2	0.69	0.47	4.80	-1.37	4.29E-2	-2.92E-2	1.13E-1	1.52	0.64	-
L5	0.05	-1.46	-3.70E-2	2.45E-2	6.87E-2	1.41	0.65	-1.41	0.44	1.62E-2	1.13E-2	3.49E-2	0.71	0.36	6.24	-1.45	4.77E-2	-2.96E-2	9.34E-2	1.49	0.62	-
Serratus Anterior																						
T6	12.57	-3.98	-4.79E-2	-5.94E-2	1.50E-1	-	-	6.42	-0.51	-5.52E-3	3.24E-2	2.69E-2	-	-	2.75	-0.83	1.81E-2	-5.35E-3	3.46E-2	-	-	-
T7	13.67	-4.33	-5.21E-2	-6.47E-2	1.63E-1	2.37	0.70	6.47	-0.52	-5.57E-3	3.26E-2	2.71E-2	0.62	0.67	3.07	-0.92	2.01E-2	-5.96E-3	3.85E-2	1.16	0.39	-
T8	19.95	-4.32	-4.00E-2	-8.86E-2	1.43E-1	2.65	0.58	8.35	-0.88	-8.93E-3	2.61E-2	2.53E-2	0.64	0.68	8.97	-1.29	1.68E-2	-4.05E-2	4.53E-2	1.26	0.37	-
T9	16.56	-4.51	-5.13E-2	-3.79E-2	8.71E-2	2.79	0.62	7.71	-0.93	-9.40E-3	3.05E-2	2.71E-2	0.64	0.71	11.33	-1.22	2.80E-2	-5.78E-2	3.77E-2	1.39	0.26	-
T10	-10.79	-1.67	5.99E-3	1.05E-1	2.64E-2	2.92	0.31	9.28	-0.97	-8.52E-3	1.96E-2	3.41E-2	0.71	0.66	15.28	-0.68	9.99E-3	-9.28E-2	7.19E-2	1.54	0.25	-
T11	-11.29	0.18	6.01E-3	9.07E-2	8.47E-4	2.36	0.11	7.28	-1.24	6.19E-3	3.11E-2	2.54E-2	0.67	0.75	20.70	-0.62	6.32E-3	-1.45E-1	1.32E-1	1.98	0.28	-
Trapezius																						
T6	13.51	-2.48	-5.99E-2	-4.42E-2	5.84E-2	-	-	6.66	-0.70	-1.15E-2	-1.23E-2	1.19E-2	-	-	-2.71	0.20	9.86E-3	-1.19E-2	-1.75E-2	-	-	-
T7	9.87	-1.81	-4.37E-2	-3.23E-2	4.26E-2	1.55	0.40	5.45	-0.57	-9.44E-3	-1.01E-2	9.73E-3	0.85	0.13	-2.66	0.19	9.70E-3	-1.17E-2	-1.72E-2	0.31	0.68	-
T8	6.63	-1.19	-2.72E-2	-1.98E-2	2.55E-2	1.02	0.38	6.50	-0.60	-5.20E-3	-2.03E-2	7.69E-3	0.73	0.10	-3.55	0.30	8.96E-3	-8.18E-3	-1.53E-2	0.35	0.60	-

	CSA							ML-d							AP-d							
	C _I	C _S	C _A	C _H	C _M	SEE (cm ²)	R ²	C _I	C _S	C _A	C _H	C _M	SEE (cm)	R ²	C _I	C _S	C _A	C _H	C _M	SEE (cm)	R ²	
T9	6.45	-0.84	-1.29E-2	-2.89E-2	2.08E-2	0.91	0.22	4.11	-0.42	-1.59E-3	-1.04E-2	6.49E-3	0.68	0.08	-3.37	0.36	9.71E-3	-1.11E-2	-1.47E-2	0.36	0.65	
T10	3.33	-0.49	-6.16E-3	-1.56E-2	1.54E-2	0.74	0.16	7.24	-0.72	-1.70E-3	-3.09E-2	1.27E-2	0.92	0.09	-1.81	0.20	4.50E-3	-1.95E-2	-1.35E-2	0.42	0.53	
T11	-3.42	0.29	4.01E-3	1.87E-2	1.13E-2	0.49	0.20	1.83	-0.56	4.27E-2	-9.24E-3	2.95E-4	0.93	0.33	0.90	0.27	-8.88E-3	-4.44E-2	1.47E-2	0.58	0.34	
Latissimus Dorsi																						
T6	5.17	-1.06	-1.67E-2	-1.27E-2	5.56E-2	-	-	4.84	0.15	-1.82E-2	7.31E-2	5.76E-3	-	-	-9.64	1.76	4.02E-2	7.31E-2	-4.84E-2	-	-	
T7	7.65	-1.57	-2.48E-2	-1.88E-2	8.23E-2	2.55	0.34	4.31	0.13	-1.62E-2	6.52E-2	5.14E-3	1.13	0.27	-5.04	0.92	2.11E-2	3.83E-2	-2.53E-2	1.48	0.10	
T8	-1.18	-2.88	-4.82E-2	7.59E-2	4.41E-2	1.95	0.59	10.18	-1.04	-1.34E-2	1.91E-2	1.99E-2	0.85	0.47	1.92	-0.54	1.22E-2	-1.51E-2	7.21E-3	1.13	0.07	
T9	13.36	-4.28	-3.28E-2	-2.39E-2	6.45E-2	2.00	0.61	8.11	-0.91	-7.94E-3	2.61E-2	1.47E-2	0.68	0.57	0.39	-0.10	1.38E-2	-8.04E-3	-4.96E-3	0.93	0.05	
T10	-3.34	-2.06	-5.66E-3	4.26E-2	8.34E-2	1.55	0.68	11.61	-0.88	-2.41E-2	-2.39E-4	3.20E-2	0.69	0.56	3.03	2.25E-2	-2.80E-3	-2.69E-2	3.76E-3	0.91	0.06	
T11	-4.30	-1.60	3.36E-3	4.18E-2	7.50E-2	1.24	0.72	8.82	-0.93	-1.23E-2	1.69E-2	1.40E-2	0.68	0.55	9.67	-0.18	-1.20E-2	-7.58E-2	2.68E-2	0.97	0.18	
T12	-3.51	-1.31	2.75E-3	3.42E-2	6.13E-2	-	-	8.42	-0.89	-1.17E-2	1.61E-2	1.34E-2	-	-	13.51	-0.25	-1.67E-2	-1.06E-1	3.74E-2	-	-	
L1	8.95	-1.56	-8.04E-3	-3.47E-2	3.87E-2	-	-	-4.18	-0.10	5.58E-3	7.63E-2	2.22E-2	-	-	-3.00	0.39	-1.40E-2	-1.68E-3	3.24E-3	-	-	
L2	6.25	-1.09	-5.61E-3	-2.42E-2	2.70E-2	1.32	0.19	-4.10	-0.10	5.48E-3	7.49E-2	2.18E-2	0.86	0.57	-3.30	0.43	-1.54E-2	-1.85E-3	3.57E-3	0.94	0.10	
L3	3.54	-0.52	1.67E-2	-1.94E-2	1.47E-2	1.20	0.10	8.28	-0.34	1.02E-2	-6.60E-3	3.80E-2	0.90	0.36	4.67	7.49E-2	-1.56E-2	-5.05E-2	1.05E-2	0.94	0.18	
External Oblique																						
T10	0.41	-0.33	-3.07E-3	-2.27E-3	2.20E-2	0.70	0.26	2.53	-1.12	-1.18E-2	5.12E-2	1.31E-2	1.49	0.35	16.94	-1.65	1.10E-2	-6.57E-2	9.41E-2	1.71	0.46	
T11	10.15	-1.03	-1.43E-2	-4.53E-2	9.55E-3	0.65	0.25	14.44	-1.64	-1.52E-2	-2.82E-2	4.79E-2	1.39	0.41	11.45	-0.73	2.78E-2	-5.18E-2	1.12E-1	1.49	0.55	
T12	18.66	-1.89	-2.62E-2	-8.33E-2	1.76E-2	-	-	15.26	-1.73	-1.60E-2	-2.98E-2	5.06E-2	-	-	9.49	-0.61	2.30E-2	-4.30E-2	9.28E-2	-	-	
L1	3.06	-1.68	-1.05E-2	-2.91E-3	6.37E-2	-	-	5.26	-0.80	9.67E-3	2.17E-2	5.19E-2	-	-	4.27	-0.34	1.09E-2	1.97E-2	-1.63E-2	-	-	
L2	4.08	-2.23	-1.40E-2	-3.88E-3	8.49E-2	1.79	0.53	5.42	-0.82	9.96E-3	2.23E-2	5.35E-2	0.71	0.72	2.65	-0.21	6.75E-3	1.23E-2	-1.01E-2	1.56	0.02	
L3	1.50	-2.47	-2.02E-2	2.22E-2	7.50E-2	1.57	0.64	5.86	-0.38	2.03E-2	5.35E-3	7.21E-2	0.70	0.72	3.72	-0.44	4.87E-3	-1.98E-2	3.08E-2	1.36	0.09	
L4	-2.51	-2.14	1.24E-3	3.96E-2	7.36E-2	1.80	0.60	3.71	-0.12	2.65E-2	1.92E-2	6.32E-2	0.63	0.75	4.55	-0.79	-9.74E-3	-1.17E-2	1.32E-2	0.90	0.20	
L5	0.97	-0.49	2.18E-2	-8.81E-3	5.79E-2	1.99	0.20	0.50	0.56	3.03E-2	3.88E-2	4.99E-2	0.96	0.47	5.52	-1.21	-2.18E-3	1.28E-3	1.44E-3	1.38	0.17	
Internal Oblique																						
L2	-8.02	-2.21	6.92E-2	4.20E-2	4.57E-2	2.65	0.36	5.17	-1.13	5.22E-3	1.97E-2	5.58E-2	0.78	0.76	10.68	-6.82E-2	1.23E-2	-4.13E-2	1.99E-2	1.84	0.04	
L3	30.64	-5.41	-5.99E-2	-1.29E-1	7.88E-2	2.21	0.59	1.87	-3.03E-2	2.00E-2	2.64E-2	6.32E-2	0.86	0.60	-5.07	0.17	2.04E-2	2.33E-2	4.21E-2	1.47	0.18	
L4	-2.80	-2.85	2.30E-2	3.49E-2	7.89E-2	1.99	0.63	0.27	0.33	3.35E-2	3.10E-2	6.02E-2	0.81	0.64	2.70	-0.76	-8.19E-3	-5.22E-3	3.60E-2	1.04	0.36	
L5	0.47	-0.77	1.54E-2	-1.26E-2	9.14E-2	2.08	0.36	-0.45	0.78	3.48E-2	4.02E-2	3.77E-2	1.01	0.35	2.88	-1.24	4.56E-3	1.03E-2	2.22E-2	1.21	0.38	

	CSA										ML-d										AP-d										
	C _I	C _S	C _A	C _H	C _M	SEE (cm ²)	R ²	C _I	C _S	C _A	C _H	C _M	SEE (cm)	R ²	C _I	C _S	C _A	C _H	C _M	SEE (cm)	R ²	C _I	C _S	C _A	C _H	C _M	SEE (cm)	R ²			
Psoas Major																															
L1	-1.12	-0.79	-1.43E-2	2.44E-2	5.91E-3	-	-	-0.30	-0.23	1.76E-3	1.51E-2	4.65E-3	-	-	1.87E-2	-0.21	-1.55E-3	-1.34E-3	-2.61E-3	-	-	-	-	-	-	-	-	-	-	-	-
L2	-2.96	-2.07	-3.75E-2	6.43E-2	1.56E-2	1.85	0.48	-0.37	-0.28	2.19E-3	1.88E-2	5.80E-3	0.28	0.61	2.43E-2	-0.27	-2.01E-3	-1.74E-3	-3.39E-3	0.28	0.14	-	-	-	-	-	-	-	-	-	-
L3	12.14	-4.02	-7.63E-2	-2.73E-3	4.90E-2	2.34	0.57	1.24	-0.29	-1.75E-4	1.20E-2	8.25E-3	0.24	0.68	1.60	-0.42	-6.04E-3	-1.13E-2	2.60E-3	0.31	0.23	-	-	-	-	-	-	-	-	-	
L4	14.25	-5.63	-8.44E-2	1.95E-3	7.57E-2	2.32	0.73	0.82	-0.20	9.13E-4	1.77E-2	7.00E-3	0.23	0.69	1.09	-0.38	-3.51E-4	-8.97E-3	6.84E-3	0.46	0.16	-	-	-	-	-	-	-	-	-	
L5	8.97	-4.85	-4.76E-2	3.05E-2	4.55E-2	2.00	0.73	0.41	2.49E-2	6.86E-3	2.07E-2	7.66E-3	0.51	0.26	0.73	-0.41	1.49E-3	1.92E-3	1.35E-3	0.66	0.12	-	-	-	-	-	-	-	-	-	
Erector Spinae																															
T6	3.48	-1.02	-2.90E-2	4.94E-3	2.31E-2	-	-	2.71	-0.59	5.45E-3	7.76E-3	-2.08E-3	-	-	-1.98	7.75E-2	5.80E-3	-1.20E-2	-1.11E-2	-	-	-	-	-	-	-	-	-	-	-	-
T7	3.60	-1.05	-3.00E-2	5.11E-3	2.39E-2	1.16	0.40	2.74	-0.60	5.52E-3	7.86E-3	-2.10E-3	0.56	0.28	-1.93	7.55E-2	5.66E-3	-1.17E-2	-1.09E-2	0.31	0.49	-	-	-	-	-	-	-	-	-	-
T8	3.70	-1.14	-3.40E-2	1.02E-2	2.09E-2	1.16	0.42	0.89	-0.41	2.32E-3	1.80E-2	1.22E-3	0.54	0.32	-1.49	0.13	4.49E-3	-1.60E-2	-8.40E-3	0.35	0.46	-	-	-	-	-	-	-	-	-	-
T9	6.36	-1.46	-4.31E-2	2.72E-3	1.83E-2	1.16	0.48	2.50	-0.52	2.92E-3	6.34E-3	6.94E-3	0.49	0.40	-1.58	0.21	5.67E-3	-1.78E-2	-7.30E-3	0.32	0.57	-	-	-	-	-	-	-	-	-	-
T10	1.22	-1.07	-5.15E-2	3.27E-2	4.28E-2	1.50	0.49	2.47	-0.50	-1.17E-3	7.35E-3	8.85E-3	0.43	0.48	-1.11	0.16	1.72E-3	-2.03E-2	-6.66E-3	0.37	0.46	-	-	-	-	-	-	-	-	-	-
T11	-3.10	-0.90	-5.88E-2	9.80E-2	-1.05E-2	1.60	0.48	5.11	-0.50	-3.70E-3	-1.22E-2	2.16E-2	0.42	0.51	1.40	0.17	-3.14E-3	-3.84E-2	3.45E-3	0.44	0.47	-	-	-	-	-	-	-	-	-	-
T12	-4.13	-1.20	-7.83E-2	1.31E-1	-1.40E-2	-	-	5.16	-0.50	-3.73E-3	-1.23E-2	2.18E-2	-	-	1.45	0.18	-3.25E-3	-3.96E-2	3.56E-3	-	-	-	-	-	-	-	-	-	-	-	-
L1	-0.29	-2.28	-3.78E-2	7.50E-2	8.15E-2	-	-	-0.27	-0.19	2.65E-4	2.38E-2	8.17E-3	-	-	-1.59	0.13	-9.95E-3	-1.74E-2	-4.70E-3	-	-	-	-	-	-	-	-	-	-	-	-
L2	-0.33	-2.52	-4.17E-2	8.28E-2	8.99E-2	2.53	0.57	-0.27	-0.19	2.68E-4	2.41E-2	8.27E-3	0.25	0.70	-1.66	0.14	-1.04E-2	-1.82E-2	-4.92E-3	0.41	0.37	-	-	-	-	-	-	-	-	-	-
L3	2.52	-3.02	-4.39E-2	4.80E-2	1.24E-1	3.19	0.55	1.30	-8.15E-2	2.08E-3	1.40E-2	9.03E-3	0.25	0.57	-0.87	9.12E-2	-4.78E-3	-2.57E-2	-4.92E-3	0.40	0.44	-	-	-	-	-	-	-	-	-	-
L4	4.97	-1.19	-2.34E-2	1.96E-2	8.08E-2	2.82	0.30	2.38	0.10	2.83E-3	9.28E-3	6.75E-3	0.30	0.21	-1.21	9.22E-2	-2.33E-3	-2.24E-2	-3.32E-3	0.44	0.32	-	-	-	-	-	-	-	-	-	-
L5	8.54	0.37	9.53E-3	-4.37E-2	3.66E-2	2.55	0.04	2.40	0.47	6.98E-3	6.51E-3	3.96E-3	0.41	0.16	0.33	-0.16	-5.75E-3	-2.77E-2	-4.32E-3	0.47	0.26	-	-	-	-	-	-	-	-	-	-
Transversospinalis																															
T6	0.59	-0.48	-2.02E-2	1.74E-2	4.97E-3	-	-	6.77E-2	-0.10	3.15E-3	6.89E-3	-1.21E-4	-	-	-1.46	0.10	8.56E-4	-1.32E-2	-5.16E-3	-	-	-	-	-	-	-	-	-	-	-	-
T7	0.52	-0.43	-1.79E-2	1.55E-2	4.41E-3	0.55	0.43	6.04E-2	-8.94E-2	2.81E-3	6.15E-3	-1.08E-4	0.18	0.24	-1.47	0.10	8.63E-4	-1.33E-2	-5.21E-3	0.23	0.54	-	-	-	-	-	-	-	-	-	-
T8	1.82	-0.52	-2.18E-2	1.16E-2	-2.21E-3	0.51	0.44	0.42	-7.92E-2	-1.33E-3	5.05E-3	-7.70E-4	0.16	0.21	-1.40	0.13	1.56E-3	-1.52E-2	-4.21E-3	0.22	0.58	-	-	-	-	-	-	-	-	-	-
T9	1.19	-0.32	-1.42E-2	9.50E-3	4.31E-3	0.63	0.24	0.66	-4.05E-2	-6.21E-4	1.80E-3	2.27E-3	0.16	0.15	-1.12	0.15	1.93E-3	-1.86E-2	-2.98E-3	0.23	0.61	-	-	-	-	-	-	-	-	-	-
T10	1.00	-0.46	-1.36E-2	1.02E-2	8.07E-3	0.62	0.33	0.86	-8.84E-2	2.26E-4	5.38E-4	1.75E-3	0.14	0.21	-0.36	0.11	-2.13E-3	-2.27E-2	-1.36E-3	0.27	0.51	-	-	-	-	-	-	-	-	-	-
T11	-1.01	-0.50	-3.36E-3	1.81E-2	1.05E-2	0.63	0.42	1.85	-0.23	1.07E-3	-6.21E-3	4.83E-3	0.16	0.40	0.35	0.11	-1.32E-3	-2.87E-2	1.46E-3	0.31	0.51	-	-	-	-	-	-	-	-	-	-
T12	-1.07	-0.52	-3.54E-3	1.91E-2	1.11E-2	-	-	1.90	-0.24	1.10E-3	-6.40E-3	4.97E-3	-	-	0.36	0.11	-1.36E-3	-2.95E-2	1.50E-3	-	-	-	-	-	-	-	-	-	-	-	-
L1	-4.46	-0.73	-9.67E-3	5.17E-2	-5.02E-3	-	-	-0.59	-1.48E-2	2.90E-3	8.49E-3	2.34E-3	-	-	0.70	3.11E-3	-1.02E-2	-2.86E-2	-1.88E-3	-	-	-	-	-	-	-	-	-	-	-	-

	CSA										ML-d										AP-d											
	C _I	C _S	C _A	C _H	C _M	SEE (cm ²)	R ²	C _I	C _S	C _A	C _H	C _M	SEE (cm)	R ²	C _I	C _S	C _A	C _H	C _M	SEE (cm)	R ²	C _I	C _S	C _A	C _H	C _M	SEE (cm)	R ²				
L2	-5.23	-0.86	-1.13E-2	6.06E-2	-5.89E-3	1.12	0.39	-0.62	-1.56E-2	3.07E-3	8.98E-3	2.47E-3	0.14	0.44	0.75	3.31E-3	-1.08E-2	-3.04E-2	-2.00E-3	0.27	0.60	0.75	3.31E-3	-1.08E-2	-3.04E-2	-2.00E-3	0.27	0.60				
L3	5.70	-1.65	-1.43E-2	5.18E-3	7.31E-3	1.78	0.22	-6.04E-3	1.31E-2	4.64E-3	7.26E-3	-1.70E-4	0.21	0.14	1.03	-0.13	-9.48E-3	-3.50E-2	1.74E-4	0.35	0.43	1.03	-0.13	-9.48E-3	-3.50E-2	1.74E-4	0.35	0.43				
L4	3.14	-0.79	-3.06E-2	2.98E-2	3.05E-2	2.01	0.24	0.59	5.68E-2	3.03E-3	5.42E-3	2.59E-3	0.24	0.09	-1.36	1.88E-2	-6.53E-3	-2.15E-2	-7.79E-3	0.43	0.36	-1.36	1.88E-2	-6.53E-3	-2.15E-2	-7.79E-3	0.43	0.36				
L5	2.23	-0.61	-2.67E-2	3.86E-2	2.09E-2	1.79	0.24	1.42	0.23	5.38E-3	1.33E-3	3.18E-3	0.35	0.08	-0.73	-2.49E-2	-6.08E-3	-2.57E-2	-9.86E-3	0.42	0.45	-0.73	-2.49E-2	-6.08E-3	-2.57E-2	-9.86E-3	0.42	0.45				
Quadratus Lumborum																																
L1	-1.32	-0.28	-5.96E-3	1.58E-2	9.98E-4	-	-	-1.21	-0.22	-5.98E-4	2.99E-2	6.49E-4	-	-	0.22	-1.47E-5	-7.04E-3	-1.64E-2	7.28E-3	-	-	0.22	-1.47E-5	-7.04E-3	-1.64E-2	7.28E-3	-	-				
L2	-4.37	-0.93	-1.97E-2	5.21E-2	3.30E-3	0.95	0.50	-1.73	-0.31	-8.58E-4	4.29E-2	9.32E-4	0.54	0.50	0.31	-2.08E-5	-9.96E-3	-2.32E-2	1.03E-2	0.40	0.23	0.31	-2.08E-5	-9.96E-3	-2.32E-2	1.03E-2	0.40	0.23				
L3	-0.29	-1.44	-3.89E-2	3.62E-2	1.99E-2	1.21	0.56	2.82	-0.38	-4.67E-3	2.22E-2	4.30E-3	0.43	0.52	0.63	-1.52E-2	-8.75E-3	-2.90E-2	1.45E-2	0.46	0.18	0.63	-1.52E-2	-8.75E-3	-2.90E-2	1.45E-2	0.46	0.18				
L4	-4.28	-0.10	-3.86E-2	5.87E-2	2.75E-2	1.83	0.28	3.14	0.26	-3.63E-3	2.14E-2	6.26E-3	0.71	0.09	0.41	-6.23E-2	-7.02E-3	-2.19E-2	5.19E-3	0.54	0.09	0.41	-6.23E-2	-7.02E-3	-2.19E-2	5.19E-3	0.54	0.09				

Table 4

Regression coefficients for estimating muscle ACSA and moment arms using Equation 2. Coefficients in bold are significant ($p < 0.05$), and R^2 values in bold indicate significant regressions ($p < 0.05$). The regression coefficients for shaded levels (T6, T12, L1) were estimated by scaling the coefficients from the adjacent level. SEE = standard error of the estimate.

	ACSA							MA-X							MA-Y							
	C_I	C_S	C_A	C_H	C_M	SEE (cm ²)	R^2	C_I	C_S	C_A	C_H	C_M	SEE (cm)	R^2	C_I	C_S	C_A	C_H	C_M	SEE (cm)	R^2	
Pectoralis Major																						
T6	12.45	-3.26	-4.66E-2	-1.31E-2	-2.41E-3	-	-	1.75	0.15	4.28E-3	9.18E-3	5.07E-3	-	-	4.80	-1.13	2.34E-2	6.39E-3	3.72E-2	-	-	-
T7	8.43	-2.21	-3.15E-2	-8.85E-3	-1.63E-3	1.27	0.43	1.81	0.15	4.42E-3	9.48E-3	5.24E-3	0.44	0.08	4.90	-1.15	2.39E-2	6.53E-3	3.80E-2	0.89	0.62	0.62
T8	-1.74	-0.71	-4.93E-3	3.41E-2	-1.12E-2	0.88	0.29	0.42	-2.03E-2	1.18E-2	1.13E-2	1.64E-2	0.69	0.23	3.48	-0.81	2.17E-2	1.52E-2	3.93E-2	1.00	0.54	0.54
T9	4.80	-0.85	-4.53E-3	-1.78E-2	1.13E-2	0.72	0.25	1.39	-0.66	5.48E-3	1.65E-2	1.61E-3	0.88	0.23	7.25	-0.93	1.73E-2	-4.98E-3	3.95E-2	0.96	0.49	0.49
Rectus Abdominis																						
T10	14.15	-2.15	-2.21E-2	-7.85E-2	6.94E-2	1.86	0.33	-2.07	-0.29	6.79E-3	4.15E-2	-3.12E-4	1.25	0.14	13.97	-1.54	1.72E-2	-3.72E-2	9.76E-2	1.37	0.59	0.59
T11	8.37	-1.75	-7.36E-3	-4.11E-2	7.49E-2	2.12	0.28	6.38	-0.71	-5.97E-3	-1.98E-2	3.22E-2	0.81	0.30	19.45	-1.49	4.53E-3	-8.00E-2	1.32E-1	1.41	0.58	0.58
T12	8.33	-1.74	-7.32E-3	-4.09E-2	7.45E-2	-	-	6.48	-0.72	-6.06E-3	-2.01E-2	3.27E-2	-	-	18.38	-1.41	4.28E-3	-7.56E-2	1.24E-1	-	-	-
L1	0.50	-1.80	-7.93E-3	1.98E-2	4.04E-2	-	-	-1.67	-0.23	1.46E-2	2.40E-2	2.33E-2	-	-	10.85	-1.56	-6.16E-3	-2.25E-2	9.72E-2	-	-	-
L2	0.50	-1.79	-7.89E-3	1.97E-2	4.02E-2	1.36	0.52	-1.69	-0.23	1.49E-2	2.43E-2	2.37E-2	0.61	0.51	9.90	-1.43	-5.62E-3	-2.06E-2	8.87E-2	1.71	0.44	0.44
L3	6.33	-2.11	-4.13E-2	-4.50E-3	5.13E-2	1.39	0.58	1.49	1.02E-2	5.43E-3	2.48E-3	3.33E-2	0.62	0.37	6.38	-1.46	2.39E-2	-3.08E-2	1.19E-1	1.61	0.59	0.59
L4	1.96	-1.47	-2.37E-2	1.26E-2	4.86E-2	1.33	0.55	-1.15	0.25	1.32E-2	1.13E-2	4.10E-2	0.69	0.47	4.78	-1.36	4.27E-2	-2.91E-2	1.13E-1	1.51	0.64	0.64
L5	5.25E-2	-1.45	-3.68E-2	2.44E-2	6.83E-2	1.41	0.65	-1.40	0.44	1.61E-2	1.12E-2	3.47E-2	0.71	0.36	6.21	-1.45	4.74E-2	-2.95E-2	9.29E-2	1.48	0.62	0.62
Serratus Anterior																						
T6	5.89	-1.87	-2.25E-2	-2.79E-2	7.02E-2	-	-	3.01	-0.24	-2.59E-3	1.52E-2	1.26E-2	-	-	1.29	-0.39	8.47E-3	-2.51E-3	1.62E-2	-	-	-
T7	6.41	-2.03	-2.44E-2	-3.03E-2	7.64E-2	1.11	0.70	3.03	-0.24	-2.61E-3	1.53E-2	1.27E-2	0.29	0.67	1.44	-0.43	9.44E-3	-2.80E-3	1.81E-2	0.55	0.39	0.39
T8	9.36	-2.03	-1.87E-2	-4.16E-2	6.73E-2	1.24	0.58	3.92	-0.41	-4.19E-3	1.22E-2	1.19E-2	0.30	0.68	4.21	-0.61	7.86E-3	-1.90E-2	2.12E-2	0.59	0.37	0.37
T9	7.77	-2.12	-2.40E-2	-1.78E-2	4.08E-2	1.07	0.62	3.62	-0.44	-4.41E-3	1.43E-2	1.27E-2	0.30	0.71	5.31	-0.57	1.31E-2	-2.71E-2	1.77E-2	0.65	0.26	0.26
T10	-5.06	-0.79	2.81E-3	4.92E-2	1.24E-2	1.37	0.31	4.35	-0.45	-4.00E-3	9.20E-3	1.60E-2	0.33	0.66	7.17	-0.32	4.68E-3	-4.35E-2	3.37E-2	0.72	0.25	0.25
T11	-5.30	8.54E-2	2.82E-3	4.26E-2	3.91E-4	1.11	0.11	3.41	-0.58	2.91E-3	1.46E-2	1.19E-2	0.31	0.75	9.71	-0.29	2.97E-3	-6.79E-2	6.19E-2	0.93	0.28	0.28
Trapezius																						
T6	10.44	-1.92	-4.62E-2	-3.42E-2	4.51E-2	-	-	5.15	-0.54	-8.91E-3	-9.52E-3	9.19E-3	-	-	-2.09	0.15	7.61E-3	-9.22E-3	-1.35E-2	-	-	-
T7	7.62	-1.40	-3.38E-2	-2.49E-2	3.29E-2	1.20	0.40	4.21	-0.44	-7.29E-3	-7.79E-3	7.52E-3	0.65	0.13	-2.05	0.15	7.49E-3	-9.06E-3	-1.33E-2	0.24	0.68	0.68
T8	5.12	-0.92	-2.10E-2	-1.53E-2	1.97E-2	0.78	0.38	5.02	-0.46	-4.02E-3	-1.57E-2	5.94E-3	0.57	0.10	-2.74	0.23	6.92E-3	-6.32E-3	-1.18E-2	0.27	0.60	0.60

	ACSA							MA-X							MA-Y							R ²
	C _I	C _S	C _A	C _H	C _M	SEE (cm ²)	R ²	C _I	C _S	C _A	C _H	C _M	SEE (cm)	R ²	C _I	C _S	C _A	C _H	C _M	SEE (cm)	R ²	
T9	4.98	-0.65	-9.99E-3	-2.23E-2	1.61E-2	0.69	0.22	3.18	-0.32	-1.23E-3	-8.01E-3	5.01E-3	0.53	0.08	-2.60	0.28	7.50E-3	-8.56E-3	-1.14E-2	0.27	0.65	
T10	2.57	-0.38	-4.76E-3	-1.21E-2	1.19E-2	0.56	0.16	5.59	-0.56	-1.32E-3	-2.38E-2	9.79E-3	0.71	0.09	-1.39	0.16	3.48E-3	-1.51E-2	-1.04E-2	0.32	0.53	
T11	-2.64	0.23	3.10E-3	1.44E-2	8.72E-3	0.36	0.20	1.41	-0.43	3.30E-2	-7.14E-3	2.28E-4	0.71	0.33	0.70	0.21	-6.86E-3	-3.43E-2	1.14E-2	0.45	0.34	
Latissimus Dorsi																						
T6	4.71	-0.97	-1.53E-2	-1.16E-2	5.07E-2	-	-	4.41	0.14	-1.65E-2	6.66E-2	5.25E-3	-	-	-8.78	1.61	3.67E-2	6.67E-2	-4.41E-2	-	-	
T7	6.97	-1.43	-2.26E-2	-1.71E-2	7.50E-2	2.06	0.34	3.93	0.12	-1.48E-2	5.94E-2	4.68E-3	1.03	0.27	-4.60	0.84	1.92E-2	3.49E-2	-2.31E-2	1.35	0.10	
T8	-1.08	-2.62	-4.39E-2	6.92E-2	4.02E-2	1.78	0.59	9.27	-0.94	-1.22E-2	1.74E-2	1.81E-2	0.78	0.47	1.75	-0.49	1.11E-2	-1.38E-2	6.57E-3	1.03	0.07	
T9	12.17	-3.90	-2.99E-2	-2.18E-2	5.87E-2	1.82	0.61	7.39	-0.83	-7.24E-3	2.38E-2	1.34E-2	0.62	0.57	0.36	-9.16E-2	1.26E-2	-7.32E-3	-4.52E-3	0.85	0.05	
T10	-3.05	-1.88	-5.15E-3	3.89E-2	7.60E-2	1.41	0.68	10.58	-0.80	-2.20E-2	-2.18E-4	2.92E-2	0.63	0.56	2.76	2.05E-2	-2.55E-3	-2.46E-2	3.43E-3	0.83	0.06	
T11	-3.92	-1.46	3.07E-3	3.82E-2	6.84E-2	1.13	0.72	8.04	-0.84	-1.12E-2	1.54E-2	1.28E-2	0.62	0.55	8.82	-0.16	-1.09E-2	-6.91E-2	2.44E-2	0.88	0.18	
T12	-3.21	-1.19	2.51E-3	3.12E-2	5.59E-2	-	-	7.68	-0.81	-1.07E-2	1.47E-2	1.22E-2	-	-	12.31	-0.23	-1.52E-2	-9.64E-2	3.41E-2	-	-	
L1	8.16	-1.42	-7.32E-3	-3.16E-2	3.53E-2	-	-	-3.81	-9.06E-2	5.09E-3	6.96E-2	2.03E-2	-	-	-2.73	0.36	-1.28E-2	-1.53E-3	2.95E-3	-	-	
L2	5.69	-0.99	-5.11E-3	-2.21E-2	2.46E-2	1.20	0.19	-3.74	-8.90E-2	4.99E-3	6.83E-2	1.99E-2	0.78	0.57	-3.01	0.39	-1.41E-2	-1.69E-3	3.25E-3	0.86	0.10	
L3	3.23	-0.47	1.52E-2	-1.77E-2	1.34E-2	1.09	0.10	7.55	-0.31	9.34E-3	-6.02E-3	3.47E-2	0.82	0.36	4.25	6.82E-2	-1.42E-2	-4.60E-2	9.54E-3	0.86	0.18	
External Oblique																						
T10	0.37	-0.29	-2.77E-3	-2.05E-3	1.99E-2	0.63	0.26	2.29	-1.02	-1.07E-2	4.63E-2	1.19E-2	1.35	0.35	15.33	-1.49	9.99E-3	-5.94E-2	8.52E-2	1.54	0.46	
T11	9.18	-0.93	-1.29E-2	-4.10E-2	8.65E-3	0.58	0.25	13.07	-1.48	-1.37E-2	-2.55E-2	4.33E-2	1.26	0.41	10.36	-0.66	2.51E-2	-4.69E-2	1.01E-1	1.35	0.55	
T12	16.88	-1.71	-2.37E-2	-7.54E-2	1.59E-2	-	-	13.81	-1.57	-1.45E-2	-2.70E-2	4.58E-2	-	-	8.58	-0.55	2.08E-2	-3.89E-2	8.39E-2	-	-	
L1	2.77	-1.52	-9.50E-3	-2.63E-3	5.77E-2	-	-	4.76	-0.72	8.75E-3	1.96E-2	4.70E-2	-	-	3.87	-0.31	9.83E-3	1.79E-2	-1.48E-2	-	-	
L2	3.69	-2.02	-1.26E-2	-3.51E-3	7.68E-2	1.61	0.53	4.90	-0.75	9.01E-3	2.02E-2	4.84E-2	0.64	0.72	2.40	-0.19	6.11E-3	1.11E-2	-9.17E-3	1.41	0.02	
L3	1.36	-2.24	-1.82E-2	2.01E-2	6.79E-2	1.43	0.64	5.30	-0.35	1.84E-2	4.84E-3	6.52E-2	0.64	0.72	3.37	-0.40	4.41E-3	-1.79E-2	2.79E-2	1.23	0.09	
L4	-2.16	-1.84	1.07E-3	3.41E-2	6.33E-2	1.54	0.60	3.19	-0.10	2.28E-2	1.65E-2	5.44E-2	0.54	0.75	3.91	-0.68	-8.38E-3	-1.01E-2	1.13E-2	0.77	0.20	
L5	0.84	-0.42	1.87E-2	-7.58E-3	4.97E-2	1.71	0.20	0.43	0.48	2.61E-2	3.34E-2	4.29E-2	0.82	0.47	4.74	-1.04	-1.88E-3	1.10E-3	1.24E-3	1.18	0.17	
Internal Oblique																						
L2	-6.98	-1.93	6.02E-2	3.66E-2	3.98E-2	2.30	0.36	4.50	-0.99	4.55E-3	1.71E-2	4.86E-2	0.68	0.76	9.30	-5.93E-2	1.07E-2	-3.60E-2	1.73E-2	1.60	0.04	
L3	26.66	-4.71	-5.22E-2	-1.12E-1	6.86E-2	1.92	0.59	1.63	-2.64E-2	1.74E-2	2.30E-2	5.50E-2	0.75	0.60	-4.41	0.15	1.77E-2	2.03E-2	3.67E-2	1.28	0.18	
L4	-2.67	-2.71	2.20E-2	3.33E-2	7.53E-2	1.89	0.63	0.26	0.32	3.20E-2	2.96E-2	5.74E-2	0.77	0.64	2.58	-0.73	-7.81E-3	-4.98E-3	3.44E-2	1.00	0.36	
L5	0.45	-0.73	1.47E-2	-1.20E-2	8.72E-2	1.98	0.36	-0.43	0.74	3.32E-2	3.84E-2	3.60E-2	0.96	0.35	2.74	-1.18	4.36E-3	9.83E-3	2.12E-2	1.15	0.38	

	ACSA						MA-X						MA-Y								
	C _I	C _S	C _A	C _H	C _M	R ²	C _I	C _S	C _A	C _H	C _M	SEE (cm)	R ²	C _I	C _S	C _A	C _H	C _M	SEE (cm)	R ²	
Psoas Major																					
L1	-0.90	-0.63	-1.14E-2	1.96E-2	4.73E-3	-	-0.27	-0.20	1.59E-3	1.36E-2	4.20E-3	-	-	1.92E-2	-0.21	-1.59E-3	-1.37E-3	-2.67E-3	-	-	-
L2	-2.86	-2.00	-3.62E-2	6.21E-2	1.50E-2	1.74	-0.36	-0.27	2.11E-3	1.82E-2	5.60E-3	0.27	0.61	2.35E-2	-0.26	-1.94E-3	-1.68E-3	-3.27E-3	0.27	0.14	0.14
L3	12.01	-3.98	-7.55E-2	-2.71E-3	4.85E-2	2.28	1.22	-0.29	-1.73E-4	1.19E-2	8.16E-3	0.24	0.68	1.58	-0.42	-5.97E-3	-1.11E-2	2.58E-3	0.31	0.23	0.23
L4	14.11	-5.57	-8.36E-2	1.92E-3	7.49E-2	2.26	0.81	-0.19	9.03E-4	1.76E-2	6.92E-3	0.23	0.69	1.08	-0.38	-3.47E-4	-8.87E-3	6.77E-3	0.45	0.16	0.16
L5	8.90	-4.81	-4.72E-2	3.02E-2	4.51E-2	1.95	0.41	2.47E-2	6.80E-3	2.05E-2	7.60E-3	0.50	0.26	0.73	-0.41	1.48E-3	1.91E-3	1.34E-3	0.65	0.12	0.12
Erector Spinae																					
T6	3.47	-1.02	-2.90E-2	4.93E-3	2.30E-2	-	2.70	-0.59	5.44E-3	7.74E-3	-2.07E-3	-	-	-1.98	7.73E-2	5.79E-3	-1.20E-2	-1.11E-2	-	-	-
T7	3.59	-1.05	-3.00E-2	5.10E-3	2.38E-2	1.16	2.74	-0.60	5.51E-3	7.84E-3	-2.10E-3	0.56	0.28	-1.93	7.54E-2	5.65E-3	-1.17E-2	-1.08E-2	0.31	0.49	0.49
T8	3.70	-1.14	-3.40E-2	1.02E-2	2.09E-2	1.15	0.89	-0.41	2.32E-3	1.80E-2	1.22E-3	0.54	0.32	-1.49	0.13	4.48E-3	-1.59E-2	-8.38E-3	0.35	0.46	0.46
T9	6.35	-1.46	-4.30E-2	2.71E-3	1.82E-2	1.15	2.49	-0.52	2.91E-3	6.32E-3	6.92E-3	0.49	0.40	-1.58	0.21	5.66E-3	-1.77E-2	-7.28E-3	0.32	0.57	0.57
T10	1.22	-1.07	-5.14E-2	3.26E-2	4.27E-2	1.50	2.47	-0.50	-1.17E-3	7.33E-3	8.83E-3	0.43	0.48	-1.10	0.16	1.72E-3	-2.02E-2	-6.65E-3	0.37	0.46	0.46
T11	-3.09	-0.90	-5.87E-2	9.78E-2	-1.05E-2	1.59	5.10	-0.50	-3.69E-3	-1.22E-2	2.16E-2	0.42	0.51	1.40	0.17	-3.14E-3	-3.83E-2	3.44E-3	0.44	0.47	0.47
T12	-4.10	-1.19	-7.79E-2	1.30E-1	-1.39E-2	-	5.12	-0.50	-3.70E-3	-1.22E-2	2.16E-2	-	-	1.44	0.18	-3.23E-3	-3.95E-2	3.54E-3	-	-	-
L1	-0.30	-2.26	-3.74E-2	7.42E-2	8.06E-2	-	-0.26	-0.18	2.61E-4	2.35E-2	8.07E-3	-	-	-1.57	0.13	-9.85E-3	-1.72E-2	-4.65E-3	-	-	-
L2	-0.32	-2.47	-4.09E-2	8.11E-2	8.80E-2	2.48	-0.26	-0.18	2.62E-4	2.36E-2	8.09E-3	0.25	0.70	-1.63	0.14	-1.02E-2	-1.78E-2	-4.81E-3	0.41	0.37	0.37
L3	2.42	-2.90	-4.22E-2	4.61E-2	1.19E-1	3.06	1.25	-7.83E-2	2.00E-3	1.34E-2	8.67E-3	0.24	0.57	-0.83	8.75E-2	-4.59E-3	-2.47E-2	-4.72E-3	0.38	0.44	0.44
L4	4.20	-1.00	-1.97E-2	1.65E-2	6.81E-2	2.38	2.01	8.20E-2	2.38E-3	7.82E-3	5.69E-3	0.25	0.21	-1.02	7.77E-2	-1.96E-3	-1.89E-2	-2.79E-3	0.37	0.32	0.32
L5	5.97	0.26	6.66E-3	-3.05E-2	2.56E-2	1.78	1.68	0.33	4.88E-3	4.55E-3	2.77E-3	0.28	0.16	0.23	-0.11	-4.02E-3	-1.93E-2	-3.02E-3	0.33	0.26	0.26
Transversospinalis																					
T6	0.55	-0.46	-1.91E-2	1.65E-2	4.70E-3	-	6.39E-2	-9.46E-2	2.97E-3	6.51E-3	-1.14E-4	-	-	-1.38	0.10	8.08E-4	-1.25E-2	-4.88E-3	-	-	-
T7	0.49	-0.41	-1.69E-2	1.46E-2	4.17E-3	0.52	5.70E-2	-8.45E-2	2.65E-3	5.81E-3	-1.02E-4	0.17	0.24	-1.39	0.10	8.15E-4	-1.26E-2	-4.92E-3	0.21	0.54	0.54
T8	1.72	-0.49	-2.06E-2	1.09E-2	-2.08E-3	0.48	0.39	-7.48E-2	-1.26E-3	4.77E-3	-7.27E-4	0.15	0.21	-1.32	0.13	1.47E-3	-1.44E-2	-3.98E-3	0.21	0.58	0.58
T9	1.12	-0.30	-1.35E-2	8.96E-3	4.07E-3	0.59	0.62	-3.82E-2	-5.87E-4	1.70E-3	2.14E-3	0.15	0.15	-1.06	0.14	1.82E-3	-1.76E-2	-2.81E-3	0.22	0.61	0.61
T10	0.95	-0.44	-1.28E-2	9.66E-3	7.62E-3	0.59	0.82	-8.35E-2	2.13E-4	5.08E-4	1.65E-3	0.13	0.21	-0.34	0.10	-2.01E-3	-2.14E-2	-1.29E-3	0.26	0.51	0.51
T11	-0.96	-0.47	-3.17E-3	1.71E-2	9.92E-3	0.60	1.74	-0.22	1.01E-3	-5.87E-3	4.56E-3	0.15	0.40	0.33	0.11	-1.25E-3	-2.71E-2	1.38E-3	0.30	0.51	0.51
T12	-1.01	-0.49	-3.34E-3	1.80E-2	1.05E-2	-	1.80	-0.23	1.04E-3	-6.05E-3	4.70E-3	-	-	0.34	0.11	-1.29E-3	-2.80E-2	1.42E-3	-	-	-
L1	-4.22	-0.69	-9.14E-3	4.88E-2	-4.75E-3	-	-0.56	-1.40E-2	2.74E-3	8.03E-3	2.21E-3	-	-	0.67	2.96E-3	-9.66E-3	-2.71E-2	-1.79E-3	-	-	-

	ACSA										MA-X										MA-Y											
	C _I	C _S	C _A	C _H	C _M	SEE (cm ²)	R ²	C _I	C _S	C _A	C _H	C _M	SEE (cm)	R ²	C _I	C _S	C _A	C _H	C _M	SEE (cm)	R ²	C _I	C _S	C _A	C _H	C _M	SEE (cm)	R ²				
L2	-4.94	-0.81	-1.07E-2	5.72E-2	-5.57E-3	1.06	0.39	-0.59	-1.48E-2	2.90E-3	8.48E-3	2.33E-3	0.13	0.44	0.71	3.12E-3	-1.02E-2	-2.87E-2	-1.89E-3	0.26	0.60											
L3	5.24	-1.52	-1.31E-2	4.75E-3	6.72E-3	1.63	0.22	-5.55E-3	1.20E-2	4.26E-3	6.67E-3	-1.56E-4	0.20	0.14	0.95	-0.12	-8.71E-3	-3.21E-2	1.60E-4	0.32	0.43											
L4	2.93	-0.74	-2.86E-2	2.78E-2	2.84E-2	1.88	0.24	0.55	5.30E-2	2.83E-3	5.06E-3	2.41E-3	0.22	0.09	-1.26	1.76E-2	-6.09E-3	-2.00E-2	-7.27E-3	0.40	0.36											
L5	2.10	-0.58	-2.52E-2	3.64E-2	1.97E-2	1.68	0.24	1.34	0.22	5.07E-3	1.25E-3	2.99E-3	0.33	0.08	-0.69	-2.34E-2	-5.73E-3	-2.42E-2	-9.29E-3	0.39	0.45											
Quadratus Lumborum																																
L1	-1.20	-0.26	-5.43E-3	1.44E-2	9.10E-4	-	-	-1.18	-0.21	-5.86E-4	2.93E-2	6.36E-4	-	-	0.17	-1.16E-5	-5.55E-3	-1.29E-2	5.74E-3	-	-											
L2	-3.95	-0.84	-1.78E-2	4.71E-2	2.98E-3	0.86	0.50	-1.57	-0.28	-7.76E-4	3.87E-2	8.42E-4	0.49	0.50	0.28	-1.88E-5	-9.00E-3	-2.10E-2	9.32E-3	0.36	0.23											
L3	-0.25	-1.27	-3.42E-2	3.18E-2	1.75E-2	1.06	0.56	2.48	-0.34	-4.10E-3	1.95E-2	3.78E-3	0.38	0.52	0.55	-1.34E-2	-7.70E-3	-2.55E-2	1.28E-2	0.41	0.18											
L4	-3.48	-7.88E-2	-3.14E-2	4.78E-2	2.24E-2	1.49	0.28	2.55	0.21	-2.95E-3	1.74E-2	5.09E-3	0.58	0.09	0.34	-5.07E-2	-5.71E-3	-1.78E-2	4.22E-3	0.44	0.09											