



Viral dynamics and duration of PCR positivity of the SARS-CoV-2 Omicron variant

Citation

Hay, James, Stephen Kissler, Joseph R. Fauver, Christina Mack, Caroline G. Tai, et al. 2022. "Viral dynamics and duration of PCR positivity of the SARS-CoV-2 Omicron variant." Pre-print.

Permanent link

<https://nrs.harvard.edu/URN-3:HUL.INSTREPOS:37370587>

Terms of Use

This article was downloaded from Harvard University's DASH repository, and is made available under the terms and conditions applicable to Other Posted Material, as set forth at <http://nrs.harvard.edu/urn-3:HUL.InstRepos:dash.current.terms-of-use#LAA>

Share Your Story

The Harvard community has made this article openly available.
Please share how this access benefits you. [Submit a story](#).

[Accessibility](#)

Viral dynamics and duration of PCR positivity of the SARS-CoV-2 Omicron variant

James A. Hay^{1*}, Stephen M. Kissler^{1*}, Joseph R. Fauver^{2*}, Christina Mack^{3*}, Caroline G. Tai³, Radhika M. Samant³, Sarah Connelly³, Deverick J. Anderson⁴, Gaurav Khullar⁵, Matthew MacKay⁵, Miral Patel⁵, Shannan Kelly⁵, April Manhertz⁵, Isaac Eiter⁵, Daisy Salgado⁵, Tim Baker⁵, Ben Howard⁵, Joel T. Dudley⁵, Christopher E. Mason⁵, David D. Ho⁶, Nathan D. Grubaugh^{2**}, Yonatan H. Grad^{1**}

* These authors contributed equally.

** Co-senior authors.

¹ Harvard T.H. Chan School of Public Health, Boston, MA

² Yale School of Public Health, New Haven, CT

³ IQVIA, Real World Solutions, Durham, NC

⁴ Duke Center for Antimicrobial Stewardship and Infection Prevention, Durham, NC

⁵ TEMPUS Labs, Chicago, IL

⁶ Columbia University Vagelos College of Physicians and Surgeons, New York, NY

Correspondence and requests for materials should be addressed to:

Email: ygrad@hsph.harvard.edu

Telephone: 617.432.2275

Funding Statement: Supported in part by CDC contract 200-2016-91779, Emergent Ventures at the Mercatus Center, the Huffman Family Donor Advised Fund, the Morris-Singer Fund, the National Basketball Association, and the National Basketball Players Association.

Data availability: Code and data to regenerate these analyses, including individual cycle threshold value trajectories, are available at https://github.com/gradlab/CtTrajectories_Omicron.

Abstract.

Background. The Omicron SARS-CoV-2 variant is responsible for a major wave of COVID-19, with record case counts reflecting high transmissibility and escape from prior immunity. Defining the time course of Omicron viral proliferation and clearance is crucial to inform isolation protocols aiming to minimize disease spread.

Methods. We obtained longitudinal, quantitative RT-qPCR test results using combined anterior nares and oropharyngeal samples ($n = 10,324$) collected between July 5th, 2021 and January 10th, 2022 from the National Basketball Association's (NBA) occupational health program. We quantified the fraction of tests with PCR cycle threshold (Ct) values <30 , chosen as a proxy for potential infectivity and antigen test positivity, on each day after first detection of suspected and confirmed Omicron infections, stratified by individuals detected under frequent testing protocols and those detected due to symptom onset or concern for contact with an infected individual. We quantified the duration of viral proliferation, clearance rate, and peak viral concentration for individuals with acute Omicron and Delta variant SARS-CoV-2 infections.

Results. A total of 97 infections were confirmed or suspected to be from the Omicron variant and 107 from the Delta variant. Of 27 Omicron-infected individuals testing positive ≤ 1 day after a previous negative or inconclusive test, 52.0% (13/25) were PCR positive with Ct values <30 at day 5, 25.0% (6/24) at day 6, and 13.0% (3/23) on day 7 post detection. Of 70 Omicron-infected individuals detected ≥ 2 days after a previous negative or inconclusive test, 39.1% (25/64) were PCR positive with Ct values <30 at day 5, 33.3% (21/63) at day 6, and 22.2% (14/63) on day 7 post detection. Overall, Omicron infections featured a mean duration of 9.87 days (95% CI 8.83-10.9) relative to 10.9 days (95% CI 9.41-12.4) for Delta infections. The peak viral RNA based on Ct values was lower for Omicron infections than for Delta infections (Ct 23.3, 95% CI 22.4-24.3 for Omicron; Ct 20.5, 95% CI 19.2-21.8 for Delta) and the clearance phase was shorter for Omicron infections (5.35 days, 95% CI 4.78-6.00 for Omicron; 6.23 days, 95% CI 5.43-7.17 for Delta), though the rate of clearance was similar (3.13 Ct/day, 95% CI 2.75-3.54 for Omicron; 3.15 Ct/day, 95% CI 2.69-3.64 for Delta).

Conclusions. While Omicron infections feature lower peak viral RNA and a shorter clearance phase than Delta infections on average, it is unclear to what extent these differences are attributable to more immunity in this largely vaccinated population or intrinsic characteristics of the Omicron variant. Further, these results suggest that Omicron's infectiousness may not be explained by higher viral load measured in the nose and mouth by RT-PCR. The substantial fraction of individuals with Ct values <30 at days 5 of infection, particularly in those detected due to symptom onset or concern for contact with an infected individual, underscores the heterogeneity of the infectious period, with implications for isolation policies.

Main Text.

Introduction.

SARS-CoV-2 viral dynamics differ by variant and by the immune status of infected individuals, but data on the Omicron variant have been lacking, especially for viral abundance and clearance relative to other SARS-CoV-2 variants. The Omicron variant features enhanced inherent transmissibility¹, less severe disease², partial immune escape^{3–5} and a potentially shorter generation interval^{6,7} relative to previous variants, necessitating the re-evaluation of policies for testing and isolation. Such policies may be informed by an understanding of the degree and duration of viral shedding during an infection with Omicron. A useful proxy for viral shedding is viral RNA⁸, measurable by PCR, recognizing that the relationship between viral RNA, intact virus, and infectiousness may be influenced by a number of factors, including the variant, phase of infection (proliferation vs clearance), the anatomical site tested by PCR, and the extent of immune response.

We sought to describe SARS-CoV-2 Omicron variant viral dynamics in individual infections. To do so, we collected and analyzed a longitudinal set of 10,324 SARS-CoV-2 viral samples obtained from 537 participants as part of the occupational health program of the National Basketball Association (NBA) between July 5th, 2021, and January 10th, 2022. This program consists of a mix of frequent (daily) testing as well as testing triggered by COVID-19 symptoms and concern for contact with infected individuals. Cases detected in this way bear similarities to Omicron cases routinely detected in the general population, and thus these results can help inform optimal isolation durations and testing strategies.

Methods.

Study design. The data reported here represent a convenience sample including team staff, players, arena staff, and others affiliated with the NBA. The retrospective study includes samples collected between July 5th, 2021, and January 10th, 2022. Clinical samples were obtained by combined swabs of the anterior nares and oropharynx for each patient administered by a trained provider. Viral load was measured using the cycle threshold (Ct) according to the Roche cobas target 1 assay. Ct values were converted to viral genome equivalents using a standard curve⁹. Vaccination information was reported and verified by NBA staff and clinical operational team.

Study oversight. In accordance with the guidelines of the Yale Human Investigations Committee, this work with de-identified samples was approved for research not involving human subjects by the Yale Institutional Review Board (HIC protocol # 2000028599). This project was designated exempt by the Harvard Institutional Review Board (IRB20-1407).

Study participants. We tagged each series of positive tests buffered by at least 14 days of negative or missing tests on each side as a distinct infection. Positive samples were

tested with an additional RT-qPCR assay to initially differentiate between Delta and Omicron by the presence or absence of S-gene detection spanning the S 69/70 deletion found in Omicron lineage BA.1 (the dominant Omicron lineage)¹⁰. Results with an S-gene target failure were marked as suspected Omicron, and some lineages were confirmed by sequencing. The cases used in this analysis include 107 infections with Delta and 97 with Omicron (49 confirmed by sequencing + 48 suspected by S-gene target failure). Note that although the Alpha variant is also subject to S-gene target failure, given the time period of the study these samples were likely of Omicron. To quantify key viral kinetics parameters using a previously described modeling framework^{11,12}, we further subset the data to 55 Delta and 84 Omicron infections (46 confirmed + 38 suspected) based on the following additional criteria: individuals with at least three positive PCR tests (Ct <40), at least one test with Ct <32, and at least one negative PCR test.

Study outcomes. For all distinct infections with Omicron (n=97) or Delta (n=107), we determined the percentage with Ct values <30, a threshold chosen based on a combination of antigen sensitivity and studies of virus culture by Ct, where the presence of culturable virus is often assumed to correlate with infectivity^{13–17}, by number of days post detection by positive RT-qPCR test, stratifying by those who had a negative or inconclusive test ≤1 day prior to detection and those whose last negative or inconclusive test was ≥2 days ago. For the purposes of calculating these percentages, we assumed that individuals testing negative at the end of an acute infection remained negative for the remainder of the study period, whereas those ending in a positive test are right-censored. Inconclusive tests are those with a detectable Ct value to E but not ORF1a/b. Here we focus on Ct values to ORF1a/b, and thus group these inconclusive tests with negatives; we evaluate including them instead as positive in a sensitivity analysis. We also performed a sensitivity analysis using a cutoff of Ct <25. We quantified the viral proliferation duration (time from first possible detection to peak viral concentration), the viral clearance duration (time from peak viral concentration to clearance of acute infection), the duration of acute infection (proliferation duration plus clearance duration), and the peak viral concentration for each person. We determined the population mean values of these quantities separately for Delta infections (n = 55) and Omicron infections (n = 84).

Genome sequencing and lineage assignments. RNA was extracted and confirmed as SARS-CoV-2 positive by RT-qPCR¹⁰. Next Generation Sequencing was performed with the Illumina COVIDSeq ARTIC viral amplification primer set (V4, 384 samples, cat# 20065135). Library preparation was performed using the amplicon-based Illumina COVIDseq Test v033 and sequenced 2x74 on Illumina NextSeq 550 following the protocol as described in Illumina's documentation. The resulting FASTQs were processed and analyzed on Illumina BaseSpace Labs using the Illumina DRAGEN COVID Lineage Application;¹⁸ versions included are 3.5.0, 3.5.1, 3.5.2, 3.5.3 and 3.5.4. The DRAGEN COVID Lineage pipeline was run with default parameters recommended by Illumina. Lineage assignment and phylogenetics analysis using the most updated version of

Pangolin¹⁹ and NextClade²⁰, respectively. All sequenced Omicron infections (n=49) were lineage BA.1. Sequenced Delta infections were a combination of lineages B.1.617.2 and AY.x.

Statistical analysis. Following previously described methods^{9,12}, we used a Bayesian hierarchical model to estimate the proliferation duration, clearance duration, and peak viral concentration for each person and for the sub-populations of interest. The model describes the log₁₀ viral concentration during an acute infection using a continuous piecewise-linear curve with control points that specify the time of acute infection onset, the time and magnitude of peak viral concentration, and the time of acute infection clearance. The assumption of piecewise linearity is equivalent to assuming exponential viral growth during the proliferation period followed by exponential viral decay during the clearance period. The control points were inferred using the Hamiltonian Monte Carlo algorithm as implemented in Stan (version 2.24). We used priors informed by a previous analysis^{9,12} for the main analysis and conducted a sensitivity analysis using vague priors as well as a strongly biased set of priors to assess robustness to the choice of prior.

Results.

Individual viral trajectories from Omicron infection demonstrated substantial heterogeneity, though all individuals were RT-PCR negative by day 15 post detection (**Fig. 1A**). All individuals exhibited Ct values <30 at some point in their infection, and by day 11 post detection all tested individuals had Ct values ≥30. Of 27 individuals with a negative or inconclusive test ≤1 day prior to a first positive test for Omicron, 52.0% (13/25) were PCR positive with Ct values <30 at day 5, 25.0% (6/24) at day 6, and 13.0% (3/23) on day 7 post detection (**Fig. 1B, Table S1**). 51.9% (14/27) individuals exhibited Ct values <30 at some point from day 5 post detection onward. These were individuals undergoing frequent near-daily testing at the time of detection. In comparison, 70 individuals were last tested ≥2 days prior to detection by positive RT-PCR and primarily represent those who underwent testing either because of COVID-19 symptoms or because of concern for exposure to a SARS-CoV-2 infected individual. In this group, 39.1% (25/64) were PCR positive with Ct values <30 at day 5, 33.3% (21/63) at day 6, and 22.2% (14/63) on day 7 post detection (**Fig. 1B, Table S1**). 49.3% (34/69) individuals exhibited Ct values <30 at some point from day 5 post detection onward.

The daily proportion of individuals with Ct value <25 is shown in **Fig. S1**. We also evaluated the proportion of individuals with Ct value <30 over time for Delta infections (**Fig. S2, Table S2**). Finally, we found that including inconclusive PCR test results as positives rather than negatives had a negligible impact on the proportion with Ct values <30 over time since detection (**Fig. S3, Table S3**).

For those infected with the Omicron variant, we observed a proliferation phase of 4.52 days (95% credible interval 3.61-5.54), peak viral RNA of 7.28 log₁₀ genome equivalents per ml (95% CI 7.02-7.54), and clearance phase of 5.35 days (95% CI 4.78-6.00), with

an overall inferred mean duration of 9.87 days (95% CI 8.83-10.9) (**Fig. 2A-D**). The length of the proliferation phase for Omicron infections was especially variable, with individual posterior mean values ranging from 1.1 to 9.7 days (**Fig. 2B**). The peak viral RNA based on Ct values was lower than for those infected with the Delta variant (Ct 23.3, 95% CI 22.4-24.3 for Omicron, as compared to 20.5, 95% CI 19.2-21.8 for Delta) and the clearance phase was shorter (6.23 days, 95% CI 5.43-7.17 for Delta), though the rate of clearance was similar (3.13 Ct/day (95% CI 2.75-3.54) for Omicron; 3.15 Ct/day (95% CI 2.69-3.64) for Delta) (**Fig. 2E**). Delta infections had a mean duration of 10.9 days (95% CI 9.41-12.4).

Discussion.

Isolation has the greatest impact on transmission when infections are detected early, and individuals remain isolated for the duration of their infectious period. However, there are clear costs to isolating longer than necessary, such as when the duration of infection is short or when individuals first test positive late in infection. Thus, isolation guidelines ideally should be individually informed and tailored or should reflect the typical time course of infectiousness.

To define the time course for viral RNA detection indexed to the day when the infection is first detectable by PCR, we used a cohort undergoing prospective frequent testing. Most individuals rapidly reached high viral RNA following initial detection with a high proportion persisting at Ct values <30 , as a rough proxy for infectiousness, on day 5 post detection. All individuals reached Ct ≥ 30 by day 11 post detection. For individuals with no negative or inconclusive test recorded in at least 2 days preceding detection, the proportion with Ct values <30 over time showed a similar shape to those with a more recent negative or inconclusive test but with a higher proportion of cases with Ct value <30 at the time of detection. Similar kinetics between cases detected immediately after infection or those detected after some delay suggest that either symptoms appear rapidly relative to PCR positivity, or that rapid contact tracing, testing, or other factors may have accelerated case identification. Similar viral kinetics were recently observed in a cohort of hospitalized Omicron cases in Japan, with a large proportion of cases maintaining high viral loads up to 9 days post detection, while shedding was limited from day 10 onwards regardless of symptom status²¹.

We found that infections with the Omicron variant, relative to Delta infections, feature lower peak viral loads and shorter clearance times, but similar proliferation times and clearance rates. However, these differences may be attributable to factors beyond inherent variant characteristics. Importantly, we did not control for prior immune history¹², which could partially explain the lower peak viral concentrations and shorter clearance times for Omicron infections given that vaccination and infection were more prevalent during the emergence of Omicron. This may be particularly relevant in this population, with uptake of booster vaccination doses occurring after most Delta infections and before

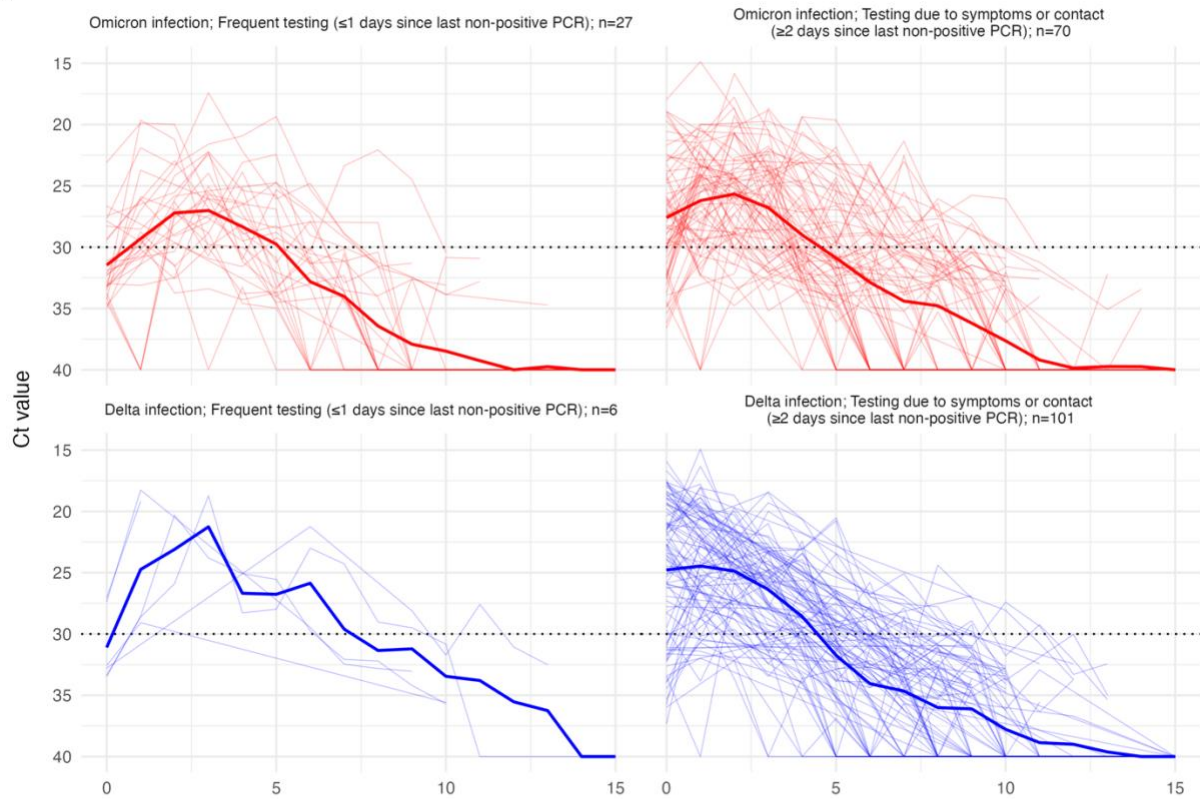
most Omicron infections. Analyses of these data stratifying individuals by number of prior vaccinations and infections are ongoing.

Based on the similarity of viral dynamics between Omicron and Delta found here, these data do not support increased viral load, as measured by RT-PCR, as an explanation for why Omicron exhibits such high infectivity nor its potentially earlier onset of infectiousness^{6,7,17,22}. This is consistent with recent findings of poor correlation between RNA genome copies and infectious viral titers²³, suggesting that factors other than viral RNA load are needed to explain differences between the Omicron and Delta infectivity profile. These data also suggest that the less severe disease demonstrated by Omicron infection is not obviously accounted for by decreased viral loads in the nasopharynx or oropharynx².

There are a number of limitations to these data and analyses. First, Ct values report viral RNA copies and do not necessarily capture infectiousness. While we chose a Ct value cutoff of 30 as a proxy for infectiousness^{13–17}, this threshold should not be considered a perfect predictor of infectiousness. Second, the Ct values reported here are from samples that each combined anterior nares and oropharyngeal swabs and were performed on the Roche Cobas platform; results may differ by anatomical site and by PCR platform^{24–27}. Third, this relatively small sample set was obtained in a population that is not representative of the general population. The study population of working individuals is younger and generally healthier, with high vaccination coverage, than to the general population, thus infections in this group may have a shorter clearance phase on average than in the general population. Furthermore, this cohort is under intensive testing, behavior protocols, and case-finding efforts; individuals detected due to symptom onset or concern for contacts may be detected earlier in infection than would be typical in the community. While results from a Japanese study suggest similar viral kinetics in a distinct population²¹, additional analyses from larger cohorts and across additional demographic groups are urgently needed. Finally, not all infected individuals were serially tested until obtaining a negative test result. As some of the trajectories reported here are right censored, it is not known when those individuals would have turned negative. Thus, the proportion of test results with Ct <30 over time should be interpreted with this limitation in mind.

The uncertainty about the true timing of the end of the infectious period for individuals identified as infected with COVID-19 outside of frequent testing regimens argues that a cautious approach for shortening isolation may be warranted. Testing may be beneficial for tailoring individual decision-making and reducing the risk of premature release from isolation²⁸ while also limiting unnecessarily prolonged isolation.

A



B

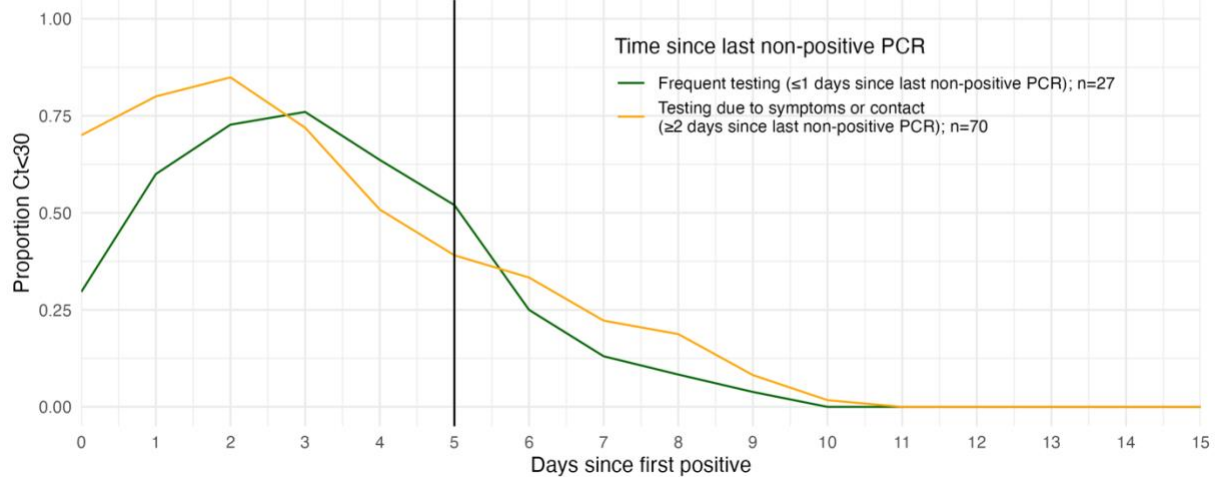


Figure 1. PCR Ct value trajectories of confirmed and suspected Omicron and Delta infections. (A) PCR Ct value trajectories for each acute Omicron (red) and Delta (blue) infection. Solid colored lines show mean Ct value over time, counting negative tests as $Ct=40$. Horizontal dotted line shows cutoff of PCR $Ct=30$. (B) Solid vertical line indicates 5 days post detection. Individuals are grouped by the gap between detection and their most recent negative or inconclusive PCR test. Individuals detected ≤ 1 day of a previous negative or inconclusive test are classified as under a “Frequent testing” regime (green line), whereas individuals detected ≥ 2 days since their last negative or inconclusive test are predominantly those detected due to recent symptom onset or through contact tracing (orange line).

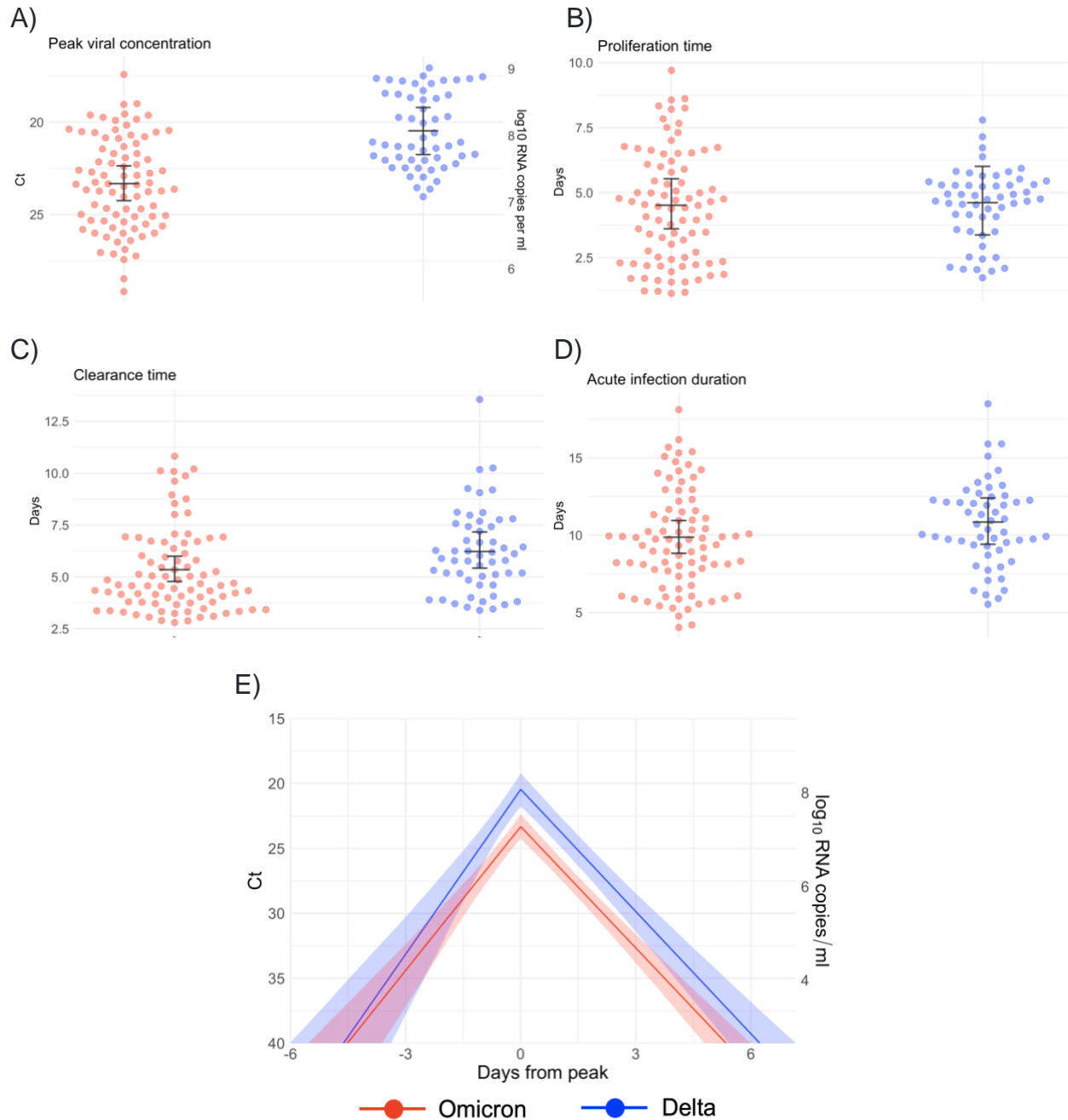


Figure 2. Inferred viral dynamics of SARS-CoV-2 variants Omicron and Delta. (A) Peak viral RNA concentration, (B) proliferation time, (C) clearance time, and (D) acute infection duration for omicron (red) and delta (blue) infections. Points depict the individual-level posterior mean values. Hatched lines depict the population mean and 95% credible intervals. (E) Mean posterior viral trajectories for Omicron (red) and Delta (blue) infections. Lines depict the mean values and shaded regions depict 95% credible envelopes.

Reference.

1. Viana, R. *et al.* Rapid epidemic expansion of the SARS-CoV-2 Omicron variant in southern Africa. *Nature* (2022) doi:10.1038/D41586-021-03832-5.
2. Lewnard, J. A. *et al.* Clinical outcomes among patients infected with Omicron (B.1.1.529) SARS-CoV-2 variant in southern California. *medRxiv* 2022.01.11.22269045 (2022) doi:10.1101/2022.01.11.22269045.
3. Rössler, A., Riepler, L., Bante, D., Laer, D. von & Kimpel, J. SARS-CoV-2 B.1.1.529 variant (Omicron) evades neutralization by sera from vaccinated and convalescent individuals. *medRxiv* 2021.12.08.21267491 (2021) doi:10.1101/2021.12.08.21267491.
4. Cele, S. *et al.* SARS-CoV-2 Omicron has extensive but incomplete escape of Pfizer BNT162b2 elicited neutralization and requires ACE2 for infection. *medRxiv* **11**, 2021.12.08.21267417 (2021).
5. Straten, K. van der *et al.* Mapping the antigenic diversification of SARS-CoV-2. *medRxiv* 2022.01.03.21268582 (2022) doi:10.1101/2022.01.03.21268582.
6. Abbott, S., Sherratt, K., Gerstung, M. & Funk, S. Estimation of the test to test distribution as a proxy for generation interval distribution for the Omicron variant in England. <https://epiforecasts.io/omicron-sgff-forecast/generation-time>.
7. Kim, D., Jo, J., Lim, J.-S. & Ryu, S. Serial interval and basic reproduction number of SARS-CoV-2 Omicron variant in South Korea. *medRxiv* 2021.12.25.21268301 (2021) doi:10.1101/2021.12.25.21268301.
8. Ke, R., Zitzmann, C., Ho, D. D., Ribeiro, R. M. & Perelson, A. S. In vivo kinetics of SARS-CoV-2 infection and its relationship with a person's infectiousness. *Proc. Natl. Acad. Sci.* **118**, e2111477118 (2021).
9. Kissler, S. M. *et al.* Viral dynamics of acute SARS-CoV-2 infection and applications to diagnostic and public health strategies. *PLOS Biol.* **19**, e3001333 (2021).
10. Vogels, C. B. F. *et al.* Multiplex qPCR discriminates variants of concern to enhance global surveillance of SARS-CoV-2. *PLOS Biol.* **19**, e3001236 (2021).
11. Kissler, S. M. *et al.* Viral dynamics of acute SARS-CoV-2 infection and applications to diagnostic and public health strategies. *PLOS Biol.* **19**, e3001333 (2021).
12. Kissler, S. M. *et al.* Viral Dynamics of SARS-CoV-2 Variants in Vaccinated and Unvaccinated Persons. *N. Engl. J. Med.* **385**, 2489–2491 (2021).
13. Pilarowski, G. *et al.* Performance Characteristics of a Rapid Severe Acute Respiratory Syndrome Coronavirus 2 Antigen Detection Assay at a Public Plaza Testing Site in San Francisco. *J. Infect. Dis.* **223**, 1139–1144 (2021).
14. Thommes, L. *et al.* Comparative evaluation of four SARS-CoV-2 antigen tests in hospitalized patients. *Int. J. Infect. Dis.* **105**, 144 (2021).
15. Brihn, A. *et al.* Diagnostic Performance of an Antigen Test with RT-PCR for the Detection of SARS-CoV-2 in a Hospital Setting — Los Angeles County, California, June–August 2020. *MMWR. Morb. Mortal. Wkly. Rep.* **70**, 702–706 (2021).
16. Bullard, J. *et al.* Predicting infectious SARS-CoV-2 from diagnostic samples. *Clin. Infect. Dis. An Off. Publ. Infect. Dis. Soc. Am.* **71**, 2663–2666 (2020).
17. Singanayagam, A. *et al.* Duration of infectiousness and correlation with RT-PCR cycle threshold values in cases of COVID-19, England, January to May 2020. *Eurosurveillance*

- 25**, 2001483 (2020).
18. BaseSpace Labs. DRAGEN COVID Lineage. Published online 2021.
 19. Rambaut, A. *et al.* A dynamic nomenclature proposal for SARS-CoV-2 lineages to assist genomic epidemiology. *Nat. Microbiol.* 2020 511 **5**, 1403–1407 (2020).
 20. Aksamentov, I. & Neher, R. NextClade. (2021).
 21. Active epidemiological investigation on SARS-CoV-2 infection caused by Omicron variant (Pango lineage B.1.1.529) in Japan: preliminary report on infectious period. <https://www.niid.go.jp/niid/en/2019-ncov-e/10884-covid19-66-en.html>.
 22. Ke, R., Zitzmann, C., Ho, D. D., Ribeiro, R. M. & Perelson, A. S. In vivo kinetics of SARS-CoV-2 infection and its relationship with a person's infectiousness. *Proc. Natl. Acad. Sci.* **118**, e2111477118 (2021).
 23. Puhach, O. *et al.* Infectious viral load in unvaccinated and vaccinated patients infected with SARS-CoV-2 WT, Delta and Omicron. *medRxiv* 2022.01.10.22269010 (2022) doi:10.1101/2022.01.10.22269010.
 24. Smith, R. L. *et al.* Longitudinal Assessment of Diagnostic Test Performance Over the Course of Acute SARS-CoV-2 Infection. *J. Infect. Dis.* **224**, 976–982 (2021).
 25. Ke, R. *et al.* Daily sampling of early SARS-CoV-2 infection reveals substantial heterogeneity in infectiousness. *medRxiv* 2021.07.12.21260208 (2021) doi:10.1101/2021.07.12.21260208.
 26. Adamson, B., Sikka, R., Wyllie, A. L. & Premssirut, P. Discordant SARS-CoV-2 PCR and Rapid Antigen Test Results When Infectious: A December 2021 Occupational Case Series. *medRxiv* 2022.01.04.22268770 (2022) doi:10.1101/2022.01.04.22268770.
 27. Ke, R. *et al.* Longitudinal analysis of SARS-CoV-2 vaccine breakthrough infections reveal limited infectious virus shedding and restricted tissue distribution. *medRxiv* 2021.08.30.21262701 (2021) doi:10.1101/2021.08.30.21262701.
 28. Quilty, B. J., Pulliam, J. R. C. & Pearson, C. A. B. Test to release from isolation after testing positive for SARS-CoV-2. *medRxiv* 2022.01.04.21268372 (2022) doi:10.1101/2022.01.04.21268372.

Supplementary figures.

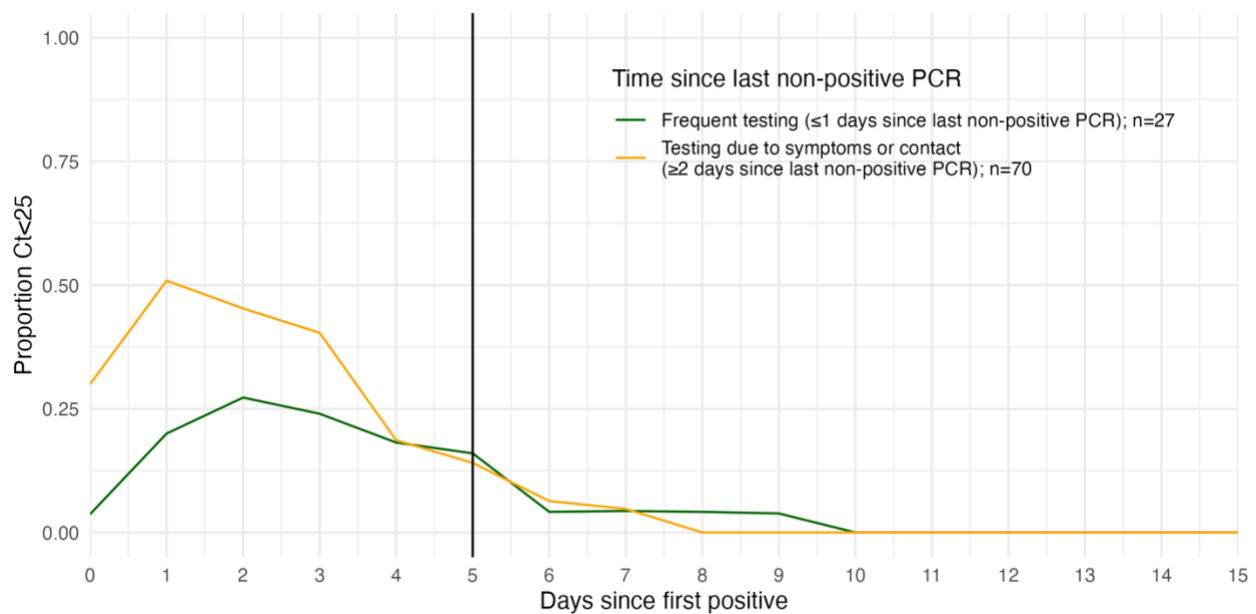


Figure S1. Proportion of suspected and confirmed Omicron-positive samples with PCR Ct <25 on each day post detection. Identical to Figure 1 but using a cutoff of PCR Ct value <25. Solid vertical line indicates 5 days post detection. Individuals are grouped by the gap between detection and their most recent negative or inconclusive PCR test. Individuals detected ≤ 1 day of a previous negative or inconclusive test are classified as under a “Frequent testing” regime (green line), whereas individuals detected ≥ 2 days since their last negative or inconclusive test are predominantly those detected due to recent symptom onset or through contact tracing (orange line).

Table S1. Sample sizes for Omicron infections shown in Figure 1. Number of samples per day since detection and number with Ct value <30. Note that not all individuals are tested on each day post detection. Note also that individuals testing negative at the end of their infection were assumed to contribute as negatives in the denominator for the remainder of the 15 days post detection.

Days since detection	Time since last non-positive PCR	Number of samples with Ct < 30	Number of samples	Proportion
0	≤1 days	8	27	0.296
1	≤1 days	12	20	0.600
2	≤1 days	16	22	0.727
3	≤1 days	19	25	0.760
4	≤1 days	14	22	0.636
5	≤1 days	13	25	0.520
6	≤1 days	6	24	0.250
7	≤1 days	3	23	0.130
8	≤1 days	2	24	0.083
9	≤1 days	1	26	0.038
10	≤1 days	0	25	0.000
11	≤1 days	0	22	0.000
12	≤1 days	0	20	0.000
13	≤1 days	0	21	0.000
14	≤1 days	0	19	0.000
15	≤1 days	0	19	0.000
0	≥2 days	49	70	0.700
1	≥2 days	44	55	0.800
2	≥2 days	45	53	0.849
3	≥2 days	41	57	0.719
4	≥2 days	30	59	0.508
5	≥2 days	25	64	0.391
6	≥2 days	21	63	0.333
7	≥2 days	14	63	0.222
8	≥2 days	12	64	0.188
9	≥2 days	5	61	0.082
10	≥2 days	1	58	0.017
11	≥2 days	0	50	0.000
12	≥2 days	0	47	0.000
13	≥2 days	0	48	0.000
14	≥2 days	0	45	0.000
15	≥2 days	0	43	0.000

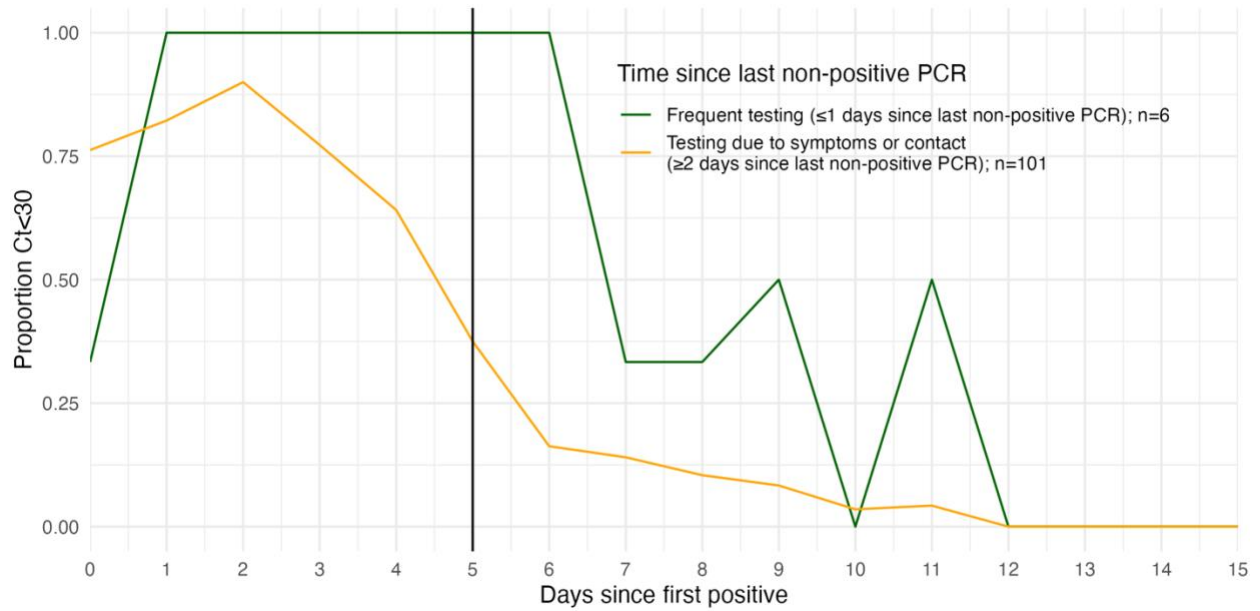


Figure S2. Proportion of suspected and confirmed Delta-positive samples with PCR Ct <30 on each day post detection. Identical to Figure 1 for Delta-confirmed infections. Solid vertical line indicates 5 days post detection. Individuals are grouped by the gap between detection and their most recent negative or inconclusive PCR test. Individuals detected ≤ 1 day of a previous negative or inconclusive test are classified as under a “Frequent testing” regime (green line), whereas individuals detected ≥ 2 days since their last negative or inconclusive test are predominantly those detected due to recent symptom onset or through contact tracing (orange line).

Table S2. Sample sizes for Delta infections in Figure S2. Number of samples per day since detection and number with Ct value <30. Note that not all individuals are tested on each day post detection and that individuals testing negative at the end of their infection were assumed to contribute as negatives in the denominator for the remainder of the 15 days post detection. Note also that one individual was reported as having two Delta infections.

Days since detection	Time since last non-positive PCR	Number of samples with Ct < 30	Number of samples	Proportion
0	≤1 days	2	6	0.333
1	≤1 days	5	5	1.000
2	≤1 days	2	2	1.000
3	≤1 days	2	2	1.000
4	≤1 days	2	2	1.000
5	≤1 days	2	2	1.000
6	≤1 days	4	4	1.000
7	≤1 days	1	3	0.333
8	≤1 days	1	3	0.333
9	≤1 days	2	4	0.500
10	≤1 days	0	4	0.000
11	≤1 days	1	2	0.500
12	≤1 days	0	2	0.000
13	≤1 days	0	2	0.000
14	≤1 days	0	1	0.000
15	≤1 days	0	1	0.000
0	≥2 days	77	101	0.762
1	≥2 days	37	45	0.822
2	≥2 days	36	40	0.900
3	≥2 days	34	44	0.773
4	≥2 days	25	39	0.641
5	≥2 days	15	40	0.375
6	≥2 days	7	43	0.163
7	≥2 days	8	57	0.140
8	≥2 days	5	48	0.104
9	≥2 days	5	60	0.083
10	≥2 days	2	57	0.035
11	≥2 days	2	47	0.043
12	≥2 days	0	48	0.000
13	≥2 days	0	46	0.000
14	≥2 days	0	39	0.000
15	≥2 days	0	40	0.000

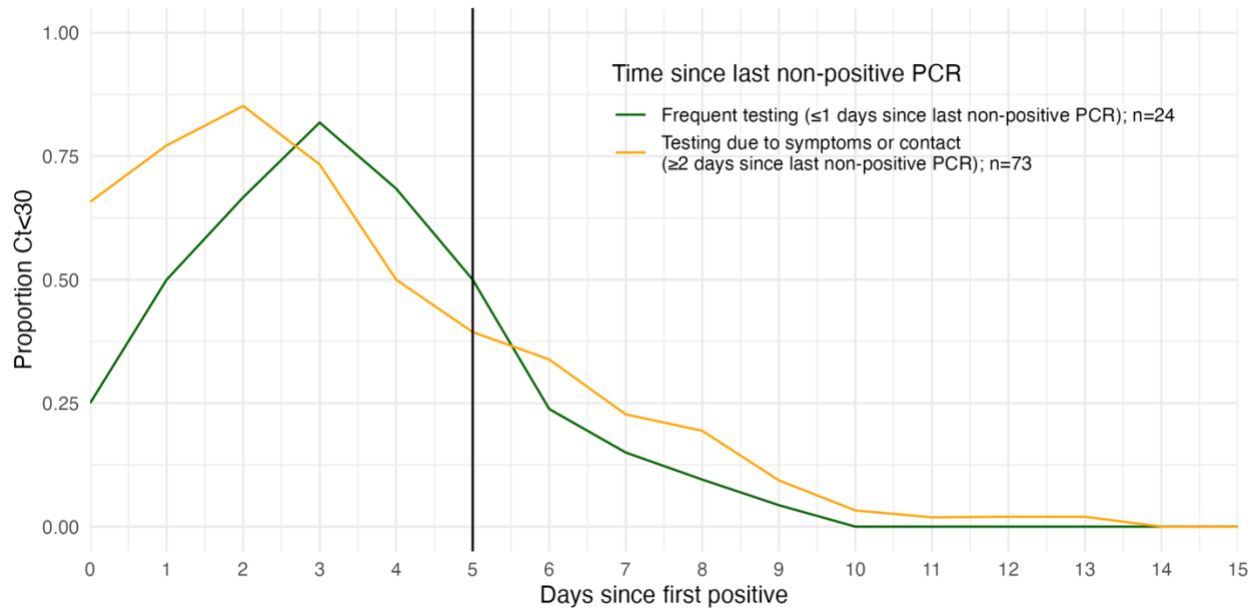


Figure S3. Proportion of suspected and confirmed Omicron-positive samples with PCR Ct <30 on each day post detection, counting inconclusive tests as positive. Identical to Figure 1 but assuming that the date of first detection includes positive and inconclusive tests. Solid vertical line indicates 5 days post detection. Individuals are grouped by the gap between detection and their most recent negative PCR test. Individuals detected ≤ 1 day of a previous negative test are classified as under a “Frequent testing” regime (green line), whereas individuals detected ≥ 2 days since their last negative test are predominantly those detected due to recent symptom onset or through contact tracing (orange line).

Table S3. Sample sizes for Omicron infections in Figure S3, counting inconclusive tests as positive. Number of samples per day since detection and number with Ct value <30. Note that not all individuals are tested on each day post detection and that individuals testing negative at the end of their infection were assumed to contribute as negatives in the denominator for the remainder of the 15 days post detection. Note that the sample sizes differ to Table S1, as inclusion of inconclusive tests results in some different time delays between last negative and first detection.

Days since detection	Time since last non-positive PCR	Number of samples with Ct < 30	Number of samples	Proportion
0	≤1 days	6	24	0.250
1	≤1 days	10	20	0.500
2	≤1 days	12	18	0.667
3	≤1 days	18	22	0.818
4	≤1 days	13	19	0.684
5	≤1 days	11	22	0.500
6	≤1 days	5	21	0.238
7	≤1 days	3	20	0.150
8	≤1 days	2	21	0.095
9	≤1 days	1	23	0.043
10	≤1 days	0	22	0.000
11	≤1 days	0	19	0.000
12	≤1 days	0	18	0.000
13	≤1 days	0	19	0.000
14	≤1 days	0	18	0.000
15	≤1 days	0	18	0.000
0	≥2 days	48	73	0.658
1	≥2 days	44	57	0.772
2	≥2 days	46	54	0.852
3	≥2 days	44	60	0.733
4	≥2 days	31	62	0.500
5	≥2 days	26	66	0.394
6	≥2 days	22	65	0.338
7	≥2 days	15	66	0.227
8	≥2 days	13	67	0.194
9	≥2 days	6	64	0.094
10	≥2 days	2	61	0.033
11	≥2 days	1	53	0.019
12	≥2 days	1	50	0.020
13	≥2 days	1	50	0.020
14	≥2 days	0	48	0.000
15	≥2 days	0	46	0.000