

**Dime Museums  
and  
Nickel Theatres  
in  
Nineteenth Century Boston**

**Fredric Woodbridge Wilson**

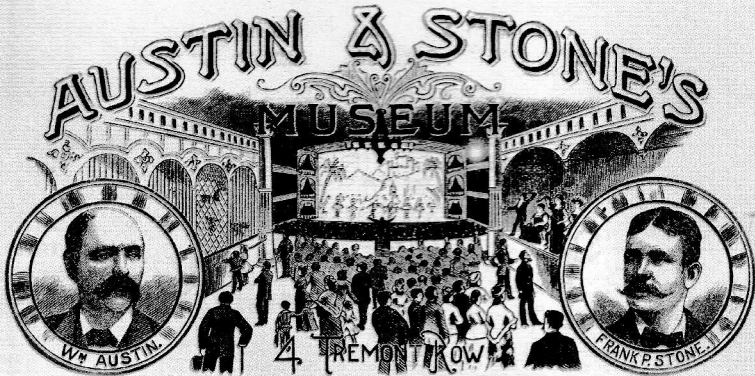
Curator of the  
Harvard Theatre Collection

Shop Club  
October 2006

*The Best Known and Most Successful Museum in America. Established 1868.*



**STONE & SHAW** - - - **Sole Proprietors and Managers**  
SAM. K. HODGDON - - BUSINESS MANAGER.



WILLIAM AUSTIN and FRANK P. STONE,  
GEORGE MILBANK

SOLE PROPRIETORS,  
GENERAL MANAGER.





**Museum and Repository  
Attractions.**

**Big Laura Walford,**

The Largest Woman that ever lived, weight, 900 lbs., 5 ft. 11 inches tall, 31 inches around the arm, 9 ft around the body.

**The Paper King,**

Tearing Paper into the most Fantastic Shapes and Pleasing Designs.

**The Hoon Family,**

A most Wonderful Musical Family.

**Prof. Stephen Stevens,**

The Prince of Punchinello-Manipulators.

**General Joe Totman,**

The Midget Policeman.

**Prof. Waterman,**

The Apple-Juice Man.

**Grace Courtland,**

The Witch of Wall Street.

**Washburn "Scales,"**

The Original Yankee Guesser.

**Sig. Giovanni,**

With his unequalled troupe of trained Birds. They do many most wonderful things.

**The Detective Museum,**

Filled with many curiosities, suggestive of Dark Ways and Police Experiences.

**The Automatic Letter Writer.**

OTHER ATTRACTIONS OF A PLEASING NATURE.

March 20 1883.

# NEW DIME MUSEUM

A SELECT FAMILY RESORT FOR LADIES AND CHILDREN.  
Horticultural Hall Building, Tremont St., cor. Bromfield.  
Open from 10 a. m. to 10 p. m. Daily.

FIRST APPEARANCE OF THE  
**MATCHLESS! INCOMPARABLE!**  
**SEVEN**  
**Sutherland Sisters**

**7 WONDERS OF THE WORLD!**  
**7 LONG HAIRD SISTERS!**  
**7 SONGSTERS!**  
**7 ECCENTRIC LADIES!**  
**7 ACCOMPLISHED MUSICIANS!** 7  
**7 Refined and Educated Ladies!**  
**7 SISTERS, ALL OF ONE FAMILY!**  
**7 MODELS OF BEAUTY AND WOMANLY GRACE!**  
**7 LADIES WITH 49 FEET OF HAIR!**  
**7 FEET OF HAIR EACH!**  
**7 Ladies with HAIR 4 INCHES THICK!**

The Sutherland Sisters Entertain Visitors  
with Music Afternoon and Evening.

**M. L. E. T. T. A.**  
THE WORLD AND ONLY  
**PHRENO-MNEMOTECHNIST!**

Who has analyzed the whole world, LECTURES and PERFORMS hourly.

**ADMISSION 10 CTS.**



FIRST-CLASS  
**STERLING ATTRACTIONS!**  
EVERYTHING NEW! EVERYTHING ORIGINAL!

**The Most Costly Curiosities!**  
RARE, BEAUTIFUL AND THE MOST  
**ECCENTRIC FREAKS!**  
**ASTOUNDING ODDITIES!**

**Amazing OBJECTS of INTEREST!**

**Patronized by the Elite!**  
**Endorsed by the Press!**  
**Crowded by the Masses!**

**AMUSING OLD AND YOUNG!**

**SEATS FREE.**

Boston had several Dime Museums and Nickel Theatres, including Austin and Stone's Dime Museum and Austin's Nickelodeon (1888, both illustrated on earlier pages). There were also two independent institutions that used the name New Dime Museum: one (above, 1882) occupying the ground floor of Horticultural Hall on Tremont Street, the other (opposite), located on the west side of Washington Street above Boylston Street. The advertisement "seats free" was probably meant to distinguish the museum from the policy at Keith and Batcheller's Mammoth Museum (1884, illustrated later), where admission was also ten cents but seats cost an additional five cents. All of these dime museums, active during the 1880's, catered to family audiences.

# New Dime Museum,

631 WASHINGTON STREET.

Open from 10 A. M. to 10 P. M.

## WILD PATAGONIAN BOY!

Only one ever captured alive.

*Giovani's Wonderful Troup of 42 Performing Birds.*

The Celebrated Burdett Twin Midgets. { SMALLEST PEOPLE ALIVE.

DEN OF LARGE AFRICAN SERPENTS

BEAUTIFUL CIRCASSIAN LADY!

WONDERFUL ALBINO GIRL!

PROF. HARTZ MAGICIAN!

WONDERFUL ILLUSION!

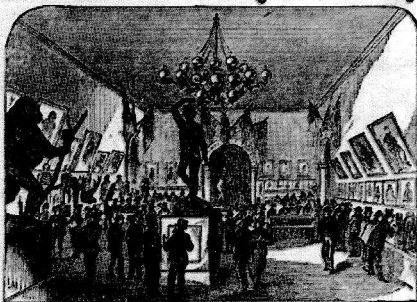
Open the Year Round. New Curiosities arriving daily. Performance every Hour. Seats for all.

A CARD TO THE PUBLIC—This is a first-class place of amusement, where ladies and children can visit without escorts with propriety. Everything conducted on first-class principle and all are invited to visit the museum, remain see it all, return home and speak of the entertainment according to its deserts. Lecture and performance every 30 minutes

**Admission to all only 10 Cents.**

Chas. N. Webster, Printer, 8 Tremont Row, Boston.

**JUST ARRIVED FROM PARIS,  
AND ADDED TO  
Dr. Jourdain's Gallery of Anatomy**



**AND MEDICAL SCIENCE.**

The Anatomy of Flowers, Fruits, and Vegetables, also, Birds, Beasts and Fishes, with a Large Addition of **NEW AND IMPORTANT PATHOLOGICAL CASES!**

Which may be seen at his New Hall,

**No. 397 Washington Street,  
OPPOSITE HAYWARD PLACE.**

**Fresh Beauties! New Wonders!  
Astounding Novelties!**

In all that concerns Nature and Art.

**Wonders of the World and Beauties of Nature!** Hitherto hidden, now revealed, showing that the handiwork of Man follows the laws of Nature.

**Wonders of the Five Senses,** — Seeing, Hearing, Smelling, Taste and Touch.

**Extraordinary Freaks of Nature;** together with Wonders from Paris, Florence, Munich, and England.

**The Gigantic Gorilla,  
SIX FEET HIGH.**

**Hidden Life Within Life!**

**Wonders of Accouchment;** Wonders in Hermaphrodites; **Wonderful Child,** with one head united to two bodies; **Wonders in Obstetrics;** Wonders in Oology; **Wonders of Embryology,** displaying from the earliest to the full period of Gestation; **Wonders of Comparative Anatomy;** **Wonders of the Digestive Organs;** **Wonders of Insectivores,** showing the Chicken from the second hour of Incubation to the full time, or twenty-second day; **Wonders of the Human Frame,** displaying at one glance, innumerable portions of the body; **Wonderfully beautiful Mechanical Figures** of the late President Lincoln, the Emperor Maximilian, and a

**“DYING ZOUAVE”**

The Acme of Anatomical Skill and Science, pronounced by competent authorities the finest specimen of indelible talent in the world.

Unparalleled Wonders, Phenomena, and striking unheard-of sights, never before seen by the public; spirit-inspiring and almost fabulous in the annals of the world.

**FOR GENTLEMEN ONLY.**

**Admission 50 Cents,** With Lectures and Catalogue Free.

**397 Washington St., Boston,**

OPPOSITE HAYWARD PLACE

Childs, Evans & Sullivan, Steam Printers, 166 Washington St., Boston.

**WASHINGTON MUSEUM,  
OF WAX FIGURES.**

**MOUTHROP & PARDEE,**

**RESPECTFULLY** acquaint the Ladies and Gentlemen of Boston and the vicinity, that there is now opened, at PARKMAN'S Hall near the New Theatre, a new and elegant collection of **WAX WORK,** as large as life, consisting of the following Characters:—

A striking likeness of the late General **GEORGE WASHINGTON,**

Represented as giving Orders to Col. Humphreys, his Aid.

His Excellency **THOMAS JEFFERSON,**

President of the United States.

**RONAPARTE** First Consul of France.

The Famous **GENERAL WOLFE.**

Who fell in the Battle on the Plains of Abenaki, represented with the Surgeon supporting him in his expiring moments, and his **ALOU Camp** bringing the Tidings of the Victory of his Army.

A striking Representation of the Death of

**CAPTAIN COOK,**

Who was killed by the Natives on one of the Islands in the South Sea, with the Combat between his Lieutenant and the Indian who killed him.

The Grecian Daughter, representing her Father in Prison. A Scene from the Beauties of History, representing Virginia the Roman Soldier saving his Daughter to preserve her from the Hands of Appian Claudius, in defence of her Virtue.

The happy Meeting of Roderick Random, with his Narcissa—*By this wonderful Kiss a blessed sleep never preceds than the bliss that jumps the Orange Grove—I never met will have this.*

Maternal Affection represented by a Lady with two Children.

The Friend's Beauty.

The Road to Ruin, or the Combat between the two Watchmen and the Rake.

The Old maid disciplining her Bonnetiffs.

Old Dolly and Joan, clearing themselves with the Bottle and Pipe.

The Poor Besotted man, Alms; and sundry other Figures.

*The Wax-figures will be opened from 9 o'clock in the Morning till 9 in the Evening, and is constant.*

Admission Twenty-five Cents for grown Persons and half price for Children.

††† The above Figures are allowed to be equal, if not superior, to those exhibited in the Museums of London and Paris.

April 28.

**CATALOGUE**

OF THE

**EDEN MUSEE**

AND

**CHAMBER  
OF HORRORS**



727, 729 and 731 Washington Street

BOSTON, MASS.

There were also museums that represented a more sensational form of amusement, notably Dr. Jourdain's Gallery of Anatomy, which for the substantial admission charge of fifty cents presented science mixed with titillation, for gentlemen only. The later Eden Musée (1896) was a wax museum with a chamber of horrors.



### Columbian Museum, BOSTON.

**D**BOWEN, respectfully informs his friends and the public, that he has re-established his MUSEUM in Milk-Street, near Liberty-Square. The Lower Rooms contain a large collection of ELEGANT PAINTINGS &c. among which are, The BATTLES of ALEXANDER, from that highly celebrated artist *Le Brun*, and which are universally admired. The *Music Hall*, above, contains A VARIETY OF ELEGANT WAX FIGURES, viz. The Finding of MOSES in the Bulrushes, by *Pharaoh's* daughter; a group of five figures. King *ALEXANDER* is represented dividing a Loaf between his family and a poor Pilgrim; a group of seven figures. *GEN. BONAPARTE*, is represented fixing his Standard on the Bridge of *Arcole*, at the Battle of *Lodi*. In the Garden, is erected a Carved

#### SKELETON OF THE MAMMOTH,

Eleven feet high, and twenty-four feet in length!!!—which is a very perfect likeness of that surprising animal. Also—NATURAL CURIOSITIES—among which are a variety of BIRDS, in fine preservation, and to appearance natural as the life.

☞ The MUSEUM is opened every Day and Evening, Saturday and Sunday Evenings excepted. Tickets, 50 cts. June 13th, 1803.

The Columbian Museum, first located on Milk Street at Liberty Square, later on Tremont Street, presented wax figures, paintings, and natural specimens. Above and right, newspaper clippings dated 1803 and 1809. Top, an engraved season ticket dated 1807.

### TO THE PUBLIC.

**T**HE Proprietors of the COLUMBIAN MUSEUM, Tremont-Street, respectfully inform their friends and the public in general, that they intend to continue the improvement of their establishment; and by their united exertions, hope to merit and receive a continuation of that liberal support which has been manifested towards them. They express their grateful thanks to all those ladies and gentlemen who have honored them with their liberal Subscription, towards their relief, since the destruction of the Museum by fire; and inform them that the *Emblematical Painting*, intended as a memorial of their benevolence, will be finished soon, and placed in the *Museum Hall*—which is 106 feet in length, and 30 in width, containing a numerous collection of the productions of Nature and Art; among which are minerals, fossils, petrifications, shells, birds, beasts, fish, insects, serpents, &c. &c.

The Gallery (which extends round the Hall) contains a large collection of Shakspeare and other elegant Prints, Paintings, Statuary, &c. too numerous to particularise.

#### NEW REGULATIONS.

- I. The price of admittance is reduced to 25 cents, without distinction of age.
- II. No person will be admitted without a ticket, or payment received at the door.
- III. The Museum will be open every day and evening, as usual, during the summer season.

DANIEL BOWEN,  
Wm. M. S. DOYLE.

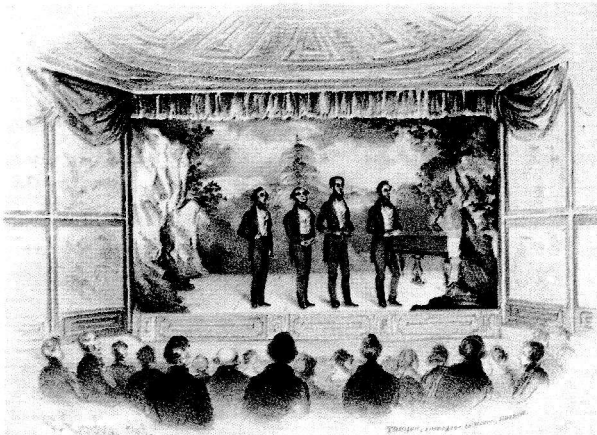
☞ The Printers throughout the Union are respectfully desired to publish the above, and thereby aid the cause of the unfortunate, and patronize the Fine Arts. Boston, June 5, 1809.



NEW ENGLAND MUSEUM.



No. 76 Court Street.



**THE**  
**HARRINGTON GRAND QUICK STEP,**

*In imitation of a full band "à la militaire"*  
 Composed expressly for and most respectfully

*Dedicated to his Friend*  
**JONATHAN HARRINGTON,**

*Performer for the first time*  
 at the opening of his new MUSEUM and written for the occasion

by  
**IRENEUS A. SIDDONS,**

BOSTON  
 Published by HENRY FRENCH, No 76 Court St.

Copyright according to Act of Congress, April 14, 1810, by Henry French in the District Court of the District of Massachusetts.

The New England Museum, established in 1818, set a pattern, as a combination of museum and theatre, that was followed by a number of other enterprises. Above, an engraving of the New England Museum. Left, a sheet music cover showing the stage of Harrington's Museum, which took over the museum in 1840 after the New England Museum moved to other premises.

# NEW ENGLAND MUSEUM

## ENGAGEMENT OF MR. C. D. JENKINS.

The Manager has the pleasure to announce, that on  
**FRIDAY EVENING, Feb. 6th, 1840,**  
AND EVERY EVENING DURING THE WEEK.

## MR. C. D. JENKINS,

The celebrated **POLYPHONIST**, and Director of **YANKEE** and other **ECCENTRICITIES**, whose Performances at the Southern Museums elicited the unbounded approbation of **LARGE and FASHIONABLE AUDIENCES**, during his entire engagements, will give a course of Entertainments at the Saloon of the Museum.

After which, an entire new set of

## ITALIAN FANTOCCHINI!

OF EXTRAORDINARY SIZE,

Will be exhibited, and go through a variety of pleasing Posts, Dancing, Juggling, &c.

The five front seats are particularly reserved for ladies and the gentleman accompanying them.

Mr. H. HOOVER will preside at the **PIANO FORTE.**

### PROGRAMME. PART I.

- 1st. **HERBY'S MUSIC SHEET.** *Piano Forte.*
- 2d. **A HUMOROUS DESCRIPTIVE SCENE**, on board a Steam Boat, in rough weather; in which Mr. JENKINS will introduce **TWELVE** distinct characters—with a Comic Song.
- 3d. **SAM BUNKER'S Visit to New York**, with his Sister Lizzy, and his promiscuous acquaintance with a lady in Broadway—with a Song.
- 4th. **MISS CAROLINE TWIST**, a disappointed Maiden of forty-five, with a Song.
- 5th. **LAMENTATIONS OF JERRY HOPPLESS**, the Honeysuckle Husband, who is kept by his wife in the capacity of second boy still servant.
- 6th. **PATRICK O'GRATHWAGGER**, the Irish Schoolmaster.

During the Evening—A Variety of SONGS.

INTERMISSION OF TEN MINUTES.

### PART II.

## The Italian Fantoccini!

- 1st. **TREMONT MARCH.** *Piano Forte.*
- 2d. **THE FRENCH JUGGLER**—who will perform with Brass Balls.
- 3d. **JACK STAYSAIL**—who will dance a Hornpipe.
- 4th. **THE TURKISH WARSOR**—who will perform a Turkish Military Dance.
- 5th. **THE ITALIAN EQUILIBRIST**—who will balance two chairs on a pole, in a variety of pleasing ways.
- 6th. **JERRY GEMMALDI**—who will dance a comic scene, after the manner of the celebrated Clown, whose name he has assumed.

At the close of the Performances, a

## DIORAMIC SCENE, OF THE DESTRUCTION OF THE LEXINGTON!

Painted by Robert Jones, Esq.,

A program for the theatre, or Saloon, within the New England Museum. he program consisted of an Olio (a series of variety acts), followed by a Fantoccini, or mechanical puppet show, and concluded with a moving mural, or diorama, accompanied by live action or a narration.

# HARRINGTON'S MUSEUM.



## UNPARALLELED MUSICAL ATTRACTION.

The Public are respectfully informed that the

# MASTERS HUGHES,

Whose extraordinary performances have created so great an astonishment in New York, Philadelphia, Baltimore, Washington, Richmond, Norfolk, &c., as well as in the principal cities in Europe, are engaged by the proprietor of this establishment, and will give a series of

## Novel Concerts!

IN THE SALOON,

Friday & Saturday Even'gs July 2 & 3

And on SATURDAY AFTERNOON at 3 1-2 o'clock.

## DAY CONCERTS

On Wednesday and Saturday Afternoons, at 5 1-2 o'clock.

**NOTICE.** The Proprietor respectfully announces to his Friends, that during the Engagement of the celebrated HUGHES FAMILY, the free list, with the exception of the Press, must unavoidably be excluded from the Saloon.

### PROGRAMME.

#### PART I.

CELEBRATED WELSH AIR—"Ash Grove,"—Master D. Hughes.  
DUETS—HARP AND PIANO FORTE—"Alpine Ranger's March."  
SOLO—VIOLIN—Air with Variations—"THE INFANT VIOLINIST."  
GRAND FAVORITE—CONCERTINA—Favorite Irish Melody—Master D. Hughes.  
SOLO—VIOLIN—INFANT VIOLINIST—"Cuckoo Solo," by desire.  
GRAND MILITARY MARCH—"HINO FORTE and Harp.

#### PART III.

SOLO—HARP—Popular Air with Variations, lately composed by Master Hughes  
FAVORITE DUETS—Harp and Violin.  
NAPOLEON'S GRAND MARCH while crossing the Alps—in Imitation of Troops and Band, their approach and retreat, until the music wholly recedes upon the ear.  
SOLO—VIOLIN—"Cathleen O'Moore," with Variations—INFANT VIOLINIST.  
CONCERTINA AND PIANO FORTE—A Sacred Funeral Theme, in which Master Hughes will imitate the Muffled Drum on the Harp, and the solemnity of a Military Funeral.  
SONG—"Napoleon's Flight from Moscow,"—Air, "The Bold Dragoon," the INFANT VIOLINIST.  
FINALE—MEDLEY—Harp and Violin.

BY Master D. HUGHES will wear his Medal presented to him by the Members of the University of Cambridge. Master JOHN A. HUGHES, his Medal presented to him by the Military Officers of Chatham.

BY Lithographic Prints of the Masters Hughes, as they appear at their Concerts, to be had at the door. Price 25 cents each.

D. Hooton, Printer, Haskins' Buildings, Tremont Street.

After the New England Museum moved across Court Street from No. 75 to No. 76, the original museum building became the home of several later theatres: first Jonathan Harrington's museum, then Graham's Olympic Saloon, later the Olympic Theatre, and Brougham and Bland's Adelphi Theatre (illustrated on following pages). Many theatres in Boston were named for their proprietors.



# GRAHAM'S Olympic Saloon!

Entrance No. 75 Court Street.

C. Graham, Manager. | G. C. Germon, Stage Manager.  
J. Freidhelm, Leader and Music Director.

1st & 2d Circle 25 Cts., Parquette 12 1-2 Cts.  
Doors open at 7 1-2 o'clock. Curtain rises at 8 o'clock, precisely.

## Benefit and Last Appearance of **MISS COHEN!** The Beautiful Danseuse.

Friday Evening, June 26th,

Will be presented the New and Laughable Vaudeville called

### BOOTS AT THE SWAN!

Henry Higgins,	Mr H. Russell
Frank Friskly,	Mr G. C. Germon
Peter Pippin,	Mr Adams
Jacob Earwig,	Mr B. G. Rogers
Miss Cecelia Moonshiae,	Mrs Judah
Emily Trevor,	Mrs Hood
Sally Smith,	Miss Hildreth
Betty Jenkins,	Miss Hoffman

Dance—El Xeleo de Xeres, By Miss Cohen

To be followed by the Laughable Farce called

### A DEAD SHOT!

HECTOR TIMID,	B. G. ROGERS	WISEMAN,	Mr ADAMS
CAPT CANNON,	G. C. GERMON	LOUISA,	Mrs GERMON
FREDERICK,	H. RUSSELL	CHATTER,	Miss HILDRETH

Song—Buy a Broom, in charater, Miss Cohen

The whole to conclude with the Admired Vaudeville entitled the

### Spoiled Child

LITTLE PICKLE,	MISS COHEN	
In which character she will Dance a Sailor's Hornpipe, and Sing Two Songs.		
OLD PICKLE,	G. C. GERMON   MISS PICKLE,	Mrs JUDAH
TAG,	Mr ROGERS   MARIA,	Mrs HOOD
JOHN,	Mr ADAMS   MARGERY,	Miss HOFFMAN
	SUSAN,	Miss HILDRETH

On Saturday Afternoon, June 27th,

### A Grand Performance!

For the accommodation of

Families, Strangers, &c.  
Commencing at 3 o'clock, precisely.

The management has the pleasure to announce that he has effected an Engagement for Three Nights Only, with the Popular Tragedian,

**Mr J. A. J. NEAFIE,**

Who will make his 1st appearance on MONDAY Evening, June 29th, in his Celebrated character of

**DON CESAR DE BAZAN.**

# OLYMPIC!

NO. 75 COURT STREET—FORMERLY THE NEW ENGLAND MUSEUM.  
 LESSEE, Wm. E. ENGLISH. | ACTING MANAGER, Wm. E. CHAPMAN.

FIRST NIGHT IN BOSTON OF THE

## BEAUTY AND THE BEAST!

On Wednesday Evening, Oct. 29th,

Will be Performed a New Grand Romantic, Operatic, Melo-Dramatic Fairy Extravaganza, the Music from a Score of different composers, (entitled to be,) called the

# BEAUTY & THE BEAST

NEW SCENERY, by Mr. HENRY ISHERWOOD, of New York—COSTUMES by Mrs. JOHNSON—PROPERTIES by Mr. HENRY. The whole under the immediate direction of Mr. Wm. E. CHAPMAN.

### DRAMATIC PERSONAL

BEAUTY, (unlike her Father,) Miss JULIA DRAKE  
 THE BEAST, alias PRINCE AZOR, (in love with BEAUTY, and not with himself,) Mr. CHANFRAU.  
 SIR ALDGATE PUMP, (Beauty's Father, but without any other claim to beauty,) Mr. H. CHAPMAN.  
 JOHN QUILL, (an Ex-Clerk, with a knowledge of sums and Arithmetic, without scruples to practical dealing in Wine-Measure in a good state of health if measured by Troy Weight,) Mr. W. CHAPMAN.  
 DRESSAHINDA, (The Sisters giving themselves airs | Miss JULIA DRAKE.  
 MARYGOLD, | only, non-conducting musical bodies.) | Miss WOODLEY.  
 QUEEN OF ROSES, (an amiable sovereign, though a ruling character, delivers her own message by expressed notes, addressed to her own voice,) (with a lecture to herself by her own LEAVES, one of the female members of the Pro and Congress never seen in public,) Miss ISHERWOOD.  
 ZEPHYRS, Misses JESSALYNE & ROBERTS.  
 SWEET ZEPHYRS,—FAIRIES, Miss MACE, Miss JONES, RICHARDS, BARRETT, &c.  
 COAL BLACK ROSES, by female petitioners for a HEARING and HEARING.

Gondolier Row, BEAUTY.  
 QUINTETTE—The departure, By Sir Aldgate, John Quill, Beauty, Dressahinda and Marygold.  
 SONG—Father Nick, BEAUTY.  
 I see a Bank, Sir ALDGATE & JOHN QUILL.  
 AIR—Tremble you, By the BEAST.  
 SONG—The Alderman's petition, Sir ALDGATE PUMP.  
 AIR—He thought of Beauty's bower, JOHN QUILL.  
 QUINTETTE—To death her serious buss, By the BEAUTY, &c.  
 AIR—I sent my love a red red nose, BEAST.  
 MUSICAL PIECE—Begone old Pump,—evidently concerted by the BEAST & SIR ALDGATE.  
 AIR—Drink to me with your 1's and 6's, BEAUTY.  
 SONG—Oh! get along Rosey, Sir ALDGATE.  
 LAMENT—Oh, where is my Beauty,  
 CONCERTED PIECE—Song writ, but not as a GLEE, by Beauty and Sir Aldgate, with obligated obligate ornaments.  
 DUETT—All's well, (including the pumps,) By BEAUTY, who will follow the leader.

### A DANCE—By the characters, on their own account. NEW SCENERY, &c.

BEAUTY'S BOWER—Temple of Roses—BEAST'S ABODE—The Magic power of love, which causes the BEAST to make a Gentleman and a Prince of himself. The conclusion designed by ISHERWOOD, from his own views, and come to by BEAUTY and the BEAST, assisted by JOHN QUILL, and other Swell-Heads.

Previous to the Extravaganza will be Performed 2d time, the

# CORPORAL'S WEDDING

SIR FELIX MARMADUKE, ..... Mr. CHANFRAU.  
 MAJOR GRISKIN, ..... Mr. W. CHAPMAN. SQUIRE PARTHIDGE, ..... Mr. GOODNOW.  
 RINGWOOD, ..... Mr. BOSWELL. CORPORAL COBB, ..... Mr. H. CHAPMAN.  
 SERGEANT, ..... Mr. BLAKE. JAMES, ..... Mr. NELSON.  
 LADY ARETHUSA, ..... Miss WOODLEY. NANCY COBB, ..... Miss JULIA DRAKE.

### CHANGE OF AFTERPIECE EVERY EVENING.

In Rehearsal, and will be immediately produced, the Domestic Drama of

## ROSINA MEADOWS!

THE VILLAGE MAID! Or—TEMPTATIONS UNVEILED.

Miss ST. CLAIR, the Beautiful Dancer, is Engaged, and will soon Appear.

On Saturday Evening Next, the 2d Grand Musical Olio will take place.

# BROUGHAM & BLAND'S BOSTON ADELPHI!

No. 75 Court Street, between Brattle and Cornhill.

**CENTRE OF ATTRACTION, THOUGH NOT OF GRAVITY  
NOVELTY OF THE NEWEST DESCRIPTION!**

The Successful Vaudeville of

## ANGELINE!

The Tremendous Travestie of

### H A M L E T!

Another New Extravagant Semi-Classic Farce

## HERCULES, KING OF CLUBS!

Introducing the Celebrated POSES PLASTIQUE! now creating such a sensation in Europe.

**Monday Evening, May 31st**

Will be presented, (2nd time) a New Vaudeville of intense interest, called

## ANGELINE!

MAURICE MIDDLETON,	Mr BLAND	JEAN BRUQUERE,	Mr STEPHENS
SIMON,	Mr GEO. GRAHAM	KEEPER,	Mr PARKER
DIAPHRAM,	Mr WHITING	ANGELINE,	Mrs BLAND
AMERE,	Mr S. D. JOHNSON	NANGUETTO,	Miss WAGSTAFF

**Favorite Pas Seul,**

**Miss Louisa Pray**

To be followed by the celebrated Shakspearean travestie of

# H A M L E T!

Written by John Poole, Esq., author of "Paul Pry," and acknowledged to be the most admirable Parody in the language.

HAMLET, a Danish Prince, son to the former and nephew to the present king,

CLAUDIUS, present King of Denmark,

POLONIUS, Lord Chamberlain,

HORATIO, friend to Hamlet,

LAERTES, son to Polonius, and brother to Ophelia,

GHOST, an ill-used illusion,

ROSENCRANTZ, a Courtier who don't know how to play the fife,

GULDENSTERN ditto, ditto, ditto,

OSRIC, a water fly,

PAGE, taking a leaf out of his master's book.

GRAVEDIGGER, Mr N. O. SNHOJDS | PLAYER KING,

GERTRUDE, Queen of Denmark, and mother to Hamlet,

OPHELIA, daughter to Polonius,

PLAYER QUEEN, Mrs S. D. JOHNSON | Ladies, Gentlemen, &c.,

Synopsis of Scenery, Incidents, &c.

Mr BROUGHAM

Mr WHITING

Mr S. D. JOHNSON

Mr PARKER

Mr BLAND

Mr GEO GRAHAM

Mr STEPHENS

Mr WILLIAMS

Miss WAGSTAFF

Miss MACE

Mr SMAILLIW

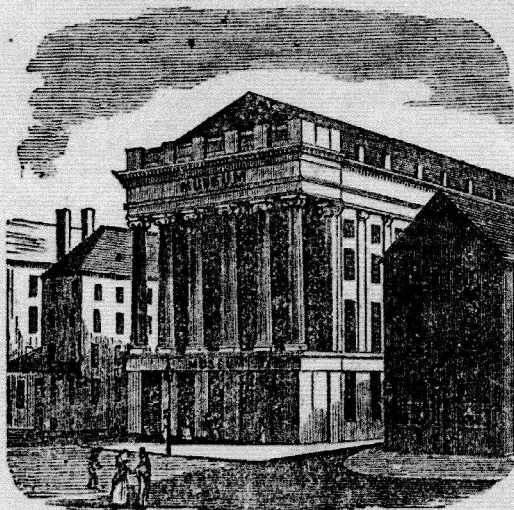
Mrs PENSON

Mrs BROUGHAM

Misses Wilson, &c

# BOSTON MUSEUM. AND GALLERY OF FINE ARTS.

(Corner of Tremont and Bromfield Streets.)



This Institution, the most splendid in the country, contains many thousand rare specimens of *Birds, Quadrupeds, Reptiles, Insects, Shells, Minerals, Fossils, Curiosities, &c.* In addition to the vast collection of *Paintings, Engravings, Water color drawings, and STATUARY.* In particular *Sully's Great Picture of the Passage of the Delaware—Canova's Venus de Medici—Le Brun's Battles of Alexander—Sir Robert Kerr Porter's Storming of Seringapatam.* And other Original Pictures by *Brughel, Copley, Guido, Kneller, Louthembourg, Marillo, Ostade, Pine, Poussin, Stuart, Teneirs, Vernet, Vanloo, West, etc. etc.*

**OPEN DAILY  
ADMISSION**

The Boston Museum and Gallery of Fine Arts, the most successful of all museum and theatre combinations, acquired the collections of several earlier museums.



# BOSTON MUSEUM!

AND  
GALLERY OF FINE ARTS,  
CORNER OF TREMONT AND BROMFIELD STREETS.  
OPEN FROM 8 O'CLOCK, A. M. UNTIL 10 O'CLOCK, P. M.

The Proprietors have the pleasure to announce that they have engaged

## MR. YOUNG,

THE CELEBRATED AND UNRIVALLED

# NECROMANCER

AND

## INDIAN BALANCER!

Who will give a series of his Astonishing Performances in

# THAUMATURGICS,

AT THE PICTURE GALLERY,

This Evening, **MONDAY, July 19th, 1841,**  
AND EVERY EVENING DURING THE WEEK,  
Commencing at half-past 8 o'clock.

**PIANIST TO THE MUSEUM, MR. H. HOOTON.**

Mr. YOUNG'S entertainments executed with the greatest dexterity

### FEATS OF BALANCE

After the manner of the Chinese in the audience by 1

1st.—A Sword and Plate.  
2d.—One, two, three & four coins  
3d.—One, two & three reasons!

### MECHANICAL AND

## THAUMATURGICS

Illustrating

## DECEPTION

Mr. Young's

## IN THE ART

Performing some

## ASTONISHING

## DAY PERFORMANCES

On Wednesday and Saturday Schools, in a body, will be admitted

ADMISSION TO MEN WITHIN

NOTICE. The public are to meet perfect manner and regular

An experienced Taxidermist, Birds or Quadrupeds they wish

Marden & C.

# Boston Museum,

AND GALLERY OF FINE ARTS,  
Corner of Tremont and Bromfield Streets.

Stage Manager, **W. W. Smith.**  
MUSICAL DIRECTOR, **T. COMER.**

Principal Scenic Artist, **CHARLES LEHR.** | Principal Machinist, **J. A. JOHNSON.**

ENGAGEMENT OF

## Miss Helen Mathews!

The elegant Comedieta,

### PERFECTION, Or, The Maid of Munster!

FIRST NIGHTS of the Original Farce,

### THE SWISS COTTAGE.

FIRST NIGHTS of the new Burletta,

### COMFORTABLE SERVICE.

EVERY DAY AND EVENING, THE

## ORANG OUTANG!

(For a short time only,) from 9, A. M. to 1, P. M.—from 2 to 5, P. M. and from 6 to 9 o'clock, in the Evening.

MADAMEISLE FANNY, the largest and best specimen of the *Orang Outang* ever imported into the United States, and the only *living animal* of the kind in the country. She is four years old, nearly four feet high, perfectly harmless and gentle in disposition, and approaches nearer to the human species than any other ever before exhibited.

On **MONDAY** and **TUESDAY** EVENINGS,

APRIL 14th and 15th, 1845.

Will be presented, the elegant Comedieta, entitled

# PERFECTION!

Or, **THE MAID OF MUNSTER!**

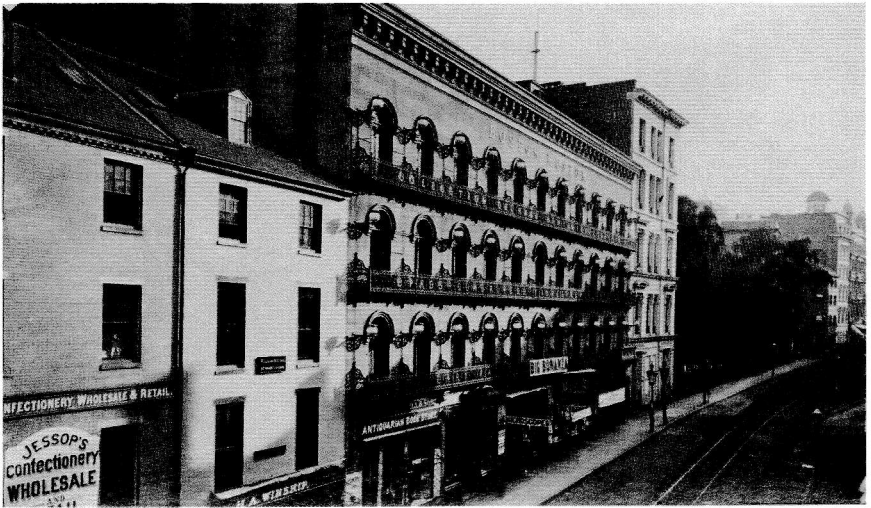
By **LAWRENCE PARAGON** M. LOCKE | **CHARLES PARAGON** Mr. W. H. SMITH.  
SAM. Mr. C. W. HUNT | **WILLIAM** Mr. ADAMS.  
MARY, Mrs. G. C. GERMON.

**KATE O'BRIEN,** MISS HELEN MATHIEWS.  
In which she will Sing, "Erin is my Home," "Moshelles, oh! come to me," "Rory O'Moore," "Lover, and "Come,

Highland Fling. - - by Miss A. Phillips.



## Boston Museum



The original Boston Museum was located on Tremont Street just south of King's Chapel. It became so successful that a new museum building, incorporating a larger theatre, was built in 1846 along the same street north of King's Chapel burial ground. Above, this photograph shows both buildings; the original 1841 museum building is the tall light-colored building at the right side of the image. Below, the main hallway of the 1946 museum shows its lavish scale and decoration.



# BOSTON MUSEUM

ACTING AND STAGE MANAGER.....Mr E. F. KEACH

SECOND WEEK OF

DION BOURCICAULT'S GREATEST PRODUCTION!

Illustrating AMERICAN CHARACTER! AMERICAN SCENES! and SOUTHERN HOMES! entitled the

# OCTOROON

Or-LIFE IN LOUISIANA.

Which was performed simultaneously for weeks at FOUR THEATRES IN NEW YORK, has created more intense interest and drawn GREATER CROWDS than any other theatrical production on record. The scene is laid in the Delta of the Mississippi River, on the Plantation of Terrebone. TIME, THE PRESENT DAY.

Entirely New Scenes by.....Mr George Heister  
Novel Mechanism by.....Mr Frederick Mozart  
Appropriate Costumes by.....Mr Thomas Joyce  
Properties by.....Mr W. Lloyd  
Produced under the direction of.....Mr E. F. Keach

THE " **ON FRIDAY**   
AND EVENING   
Also. on **SAT**

**BOSTON MUSEUM**  
Mr. R. M. FIELD . . . . . Manager.

Monday, September 10, 1888.

FIRST PRODUCTION IN THE UNITED STATES!

MRS. FRANCES HODGSON BURNETT'S

DRAMATIZATION OF HER OWN CHARMING STORY,

# Little Lord Fauntleroy







The Lion Theatre was built in 1836, on the site of the Lion Tavern along Washington Street. The Lion Theatre was an equestrian theatre, so every play included scenes for horses, which performed on a dirt floor in front of the main stage, where the orchestra seats would ordinarily be placed.

The Lion was short-lived, being replaced in 1839 by the Mechanics' Institute, a lecture hall, and then in 1840 by the Melodeon, a concert hall that was owned by the Handel and Haydn Society.

In 1878 the building was refashioned as a conventional theatre, the Gaiety, and then once again in 1882 as the Bijou Theatre, one of the most distinctive theatres in Boston's history.

A portion of the Bijou building survives, though not the theatre auditorium; it was recently sold to Emerson College for redevelopment for use by its theatre department.

# LION THEATRE.

WASHINGTON STREET.

The great approbation bestowed on the general arrangements of this New and SPLENDID ESTABLISHMENT, calls for the managers' sincere thanks to the Public in general—and as the best proof of their desires to cultivate patronage, they announce in their first week a change of entertainment; (simple but interesting,) affording the artists time to prepare a spectacle that for splendor and effect, may vie with any theatrical exhibition ever produced in this country.

Friday, January 15th,

The Evening's Entertainments will commence with  
**THE GRAND OVERTURE TO OTELO.**

After which a highly interesting Domestic Drama with appropriate scenery, called the

## Old Soldier's FIRST LOVE!!

FERMITZ BONISLAWS, (the Old Soldier,) MR HOUPT.  
CARLAVITICH, MR J. MESTAYER.  
CHRISTALINE, MISS MONIER.

The Entertainments to conclude with

**SCENES IN THE CIRCLE!**

Commencing with a

*Grand Star and Waltz Entree!*

LED by Mr BUCKLEY.

Concluding with the highly trained

**BLOOD MARE VIRGINIA,**

Dancing a Bolero, in strict tune with the music.

After which, 2d time,

**Horsemanship by Master Stokes.**

**INTREPID HORSEMANSHIP!**

Without Saddle or Bridle...by...Mrs. WILSON.

Comic Song, - - - by - - - Mr. Dickenson.

**TRANSMOGRIFICATION.**

A CLOWN DECEIVED BY A YOUNG LADY:

Young Whitlock, [Clown, - - Mr Johnson.

**Two Hanoverian Match Horses,**

Rode by Mr J. NATHANS.

**Chinese, Italian and Persian Games,**

INTRODUCING BALLS, KNIVES, DAGGERS,

And concluding with the

**PERUVIAN FRANCA AND SPANISH GLOBE,**  
BY SIGNOR PEREZ.

**GERMAN WALTZ!**

By Mr. and Mrs. BUCKLEY; her 2d appearance.

Comic Song - - - by - - - Mr. Herbert.

Three highly trained Horses will be rode by Mr ROBINSON, illustrating various Studies from ancient sculpture. Also the interesting Pose of the

**FLIGHT OF FAME!**

Perforned by Master NICHOLS, and borne on Mr Robinson's shoulders, during the full speed of his Horses. The unrivalled Feat of separating his Horses, with ease and grace.

The whole to conclude, with the 2d time,

**THE TWO CLOWNS!**

Doctor Bolus, - (alias Clown,) - Mr. Johnson.

Patient - - - [in great pain,] - Mr. Whitlock.

Stage Manager, - - - Mr BARRYMORE.

The Managers have the pleasure to announce an engagement with Mr D. S. INGER-SOLL, for a few nights, who will make his appearance early in the season.

The Splendid Crimson Curtain and Upholstery Decorations...by Mr R. H. STEWART.  
The Gas fixtures, - - - - - by Mr LAWLER.

Doors open at 6 o'clock. Boxes 75 cents—Pit 37½ cents—Gallery 25 cents.

The Box office will be open daily, excepting Saturdays, from 11 till 1 o'clock, and from 3 till 9 o'clock in the evening.

A good and efficient Police will be in constant attendance to preserve order and decorum.

PRINTED AT THE OFFICE OF W. W. CLAPP, 14 CONGRESS STREET.

ROSSINI'S

MOSES IN EGYPT

WILL BE PERFORMED BY THE

Handel and Haydn Society,

AT THE MELODEON,

ON SUNDAY EVENING,

COMMENCING AT SEVEN O'CLOCK.

---

Mr. G. F. Hayter will preside at the Organ.

Mr. C. E. Horn, . . . Director.

---

BOSTON:

OAKES & SOLOMONS, No. 20 STATE STREET.

1848.

# MELODEON! GOTTSCHALK!

ONE OCCASION ONLY,  
Wednesday Evening, November 12, 1862

The public are respectfully informed that

## MR L. M. GOTTSCHALK

The Eminent Pianist and Composer, will give in Boston

### ONE GRAND CONCERT!

On WEDNESDAY EVENING, Nov. 12th, at 8 o'clock,

When he will introduce some of his Latest Compositions, never before performed in Boston.

Arrangements have been made with the Celebrated Cantatrice,

## MISS CARLOTTA PATTI

The Principal Prima Donna of the ITALIAN OPERA, from the Academies of Music, New York, Boston and Philadelphia, whose Extraordinary Execution and Bird-like Warbling have justly obtained for her the reputation of being the most delightful Concert Singer in America. Miss CARLOTTA PATTI will appear jointly with

## L. M. GOTTSCHALK

MUSICAL DIRECTOR AND CONDUCTOR,

## MR S. BEHRENS

### PROGRAMME. PART FIRST.

- 1. TRANSCRIPTION ON THE MISERERE—From "Il Trovatore"—.....GOTTSCHALK  
Performed by L. M. GOTTSCHALK.

- 2. "NIGHTINGALE," expressly composed for Miss Carlotta Patti by.....Muzio  
MISS CARLOTTA PATTI.

#### ENGLISH WORDS.—THE NIGHTINGALE.

This is my pretty Nightingale,  
Sweet birdling of my heart!  
Wast' singing, sweeping here alone?  
Pity ye her bitter grief.

Why dost thou weep, my little warbler?  
Art thou too broken by thy love?  
Know'st thou not that thy heart's treasure  
Is to me forever lost?

Softly we will sing together,  
Thus our hearts will find relief.  
Ah! Alas, no answer? No!  
Ah! She sings once more! Ah!  
Peace is to my heart restored—  
All my sorrow has passed away!  
Even now with joy my soul is filled:  
Thanks, sweet one! Sing again.

Tu, la, la, la, &c.

- 3. HOME, SWEET HOME.....GOTTSCHALK  
L. M. GOTTSCHALK.
- 4. SONTAG'S CELEBRATED ECHO SONG.....ECKERT  
MISS CARLOTTA PATTI.
- 5. BANJO.....GOTTSCHALK  
L. M. GOTTSCHALK.

# ARTEMUS WARD

## AMONG THE MORMONS;

— AT THE —

**MELODEON,.....Washington Street,**

**FOR SIX NIGHTS ONLY,**

**Commencing MONDAY EVENING, December 26.**

**Begins at 8.**

### Programme for this Evening.

**Music on the Grand Piano—Operatic Medley, including**  
(for the first time in this city) the Soldier's Chorus, from Faust. This is a good thing.

I.

A light and airy Preamble by the Lecturer, with some jokes. (N. B.—ARTEMUS WARD will call on citizens at their private residences and explain these jokes, if necessary.)

II.

**At Sea.**—The Steamer Ariel.—Disgraceful treatment of the passengers, who are obliged to go forward to smoke pipes, while the steamer herself is allowed two Smoke Pipes amid-ships.—The Storm.—Orgustus and his fair young bride.—“Doth you observe these wet waves, my dearest Ellen! and lo! yonder them winds and breezes? Why did we ever leave Rahway?”—The steamer gets high, and imitates Mr. Clarke as Toodles.

III.

**The Land of Cold.**—The Broadway of San Francisco.

IV.

**The Land of Silver.**—Virginia City, the metropolis of the Bright New State of Nevada.—Can't think of anything smart to say about Virginia; besides, she's smart enough herself.

V.

**The Plains in Winter.**—A dismal place, indeed.—Here's where a man feels that there's no place like Home, whether it is mortgaged or not.

VI.

**Great Salt Lake City.**—A Bird's-eye view, with some entirely serious descriptive talk.

VII.

**The West Side of Main Street.**—The Salt Lake Hotel, &c.—It is a Temperance Hotel.—The landlord sells nothing stronger than winter butter.

VIII.

**The East Side of Main Street.**—The State House and things.—Also the Post Office.—A few years ago, an enterprising Mormon started an opposition Post Office, and by selling three-cent stamps for two cents, tried to run the regular Office out of town. He failed, and is now a flourishing Outcast in Idaho, and owns Gold Mines.

IX.

**The Mormon Theatre.**—The Lady of Lyons was produced at this theatre a short time since, but didn't give satisfaction on account of there being only one Pauline in it. Mr. Tom. DeWalden, of New York, is now hard at work revising this play, and by introducing twenty or thirty good square Paulines, he hopes to “fetch” the Mormon public.—This theatre has a large free list—but never speak ill of the Dead head.

# GAIETY THEATRE,

545—WASHINGTON STREET—545

J. WENTWORTH.....LESSOR AND MANAGER  
F. VAN OLKER....LEADER OF ORCHESTRA | H. L. REID.....SCENIC ARTIST

SATURDAY EVENING, MARCH 18TH, 1882.

## SOUVENIR

— OF THE —

## 500TH PERFORMANCE

— OF —

WILLIE EDOUIN'S

# SPARKS

WILLIE EDOUIN AND FRANK W. SANGER, PROPRIETORS,  
In the Bolging Success, written by NAT CHILDS and WILLIE EDOUIN, entitled

# DREAMS

OR, FUN IN A PHOTOGRAPH GALLERY.

### ACT I.—AT HOME

JOHN ANTONIO BINKS, a perfect gentleman	.....	WILLIE EDOUIN
THOMAS BINKS, aged 45	.....	JOHN A. MACKAY
FRED BINKS, aged 27, Thomas' son	.....	JAMES T. POWERS
BOB HERRITT, Office Boy to the Bank	.....	ALICE ATHERTON
RUBY BINKS, John's Wife, aged 43	.....	MARION ELMORE
"For she was not the sweet kind Whom nature never knew	.....	LOTTA BELTON
GRACE BINKS, Thomas' second wife	.....	MAY STEVENS
MAUD BINKS, Fred's Wife	.....	MARION ELMORE
KITTY BINKS, her Maid	.....	SYLVIA GERRISH
HATTIE	.....	

### ACT II.—ABROAD

JOHN ANTONIO BINKS, aged 45	.....	WILLIE EDOUIN
MRS. CHILLINGTON	.....	JOHN A. MACKAY
PICKLEBACK GRANTFALL, a Photographer	.....	JAMES T. POWERS
CHARLES	.....	ALICE ATHERTON
CHIP CHERRY	.....	MARION ELMORE
POLICEMAN 123	.....	LOTTA BELTON
RUBY CHILLINGTON, aged 18	.....	MAY STEVENS
CITY SWELL	.....	SYLVIA GERRISH
MEG BINKS, our Sister	.....	
VIOLET PARACHUTE, with Songs	.....	
MRS. CHILLINGTON	.....	
LILLIE SUCCOTASH	.....	
POLLY, House-Maid	.....	

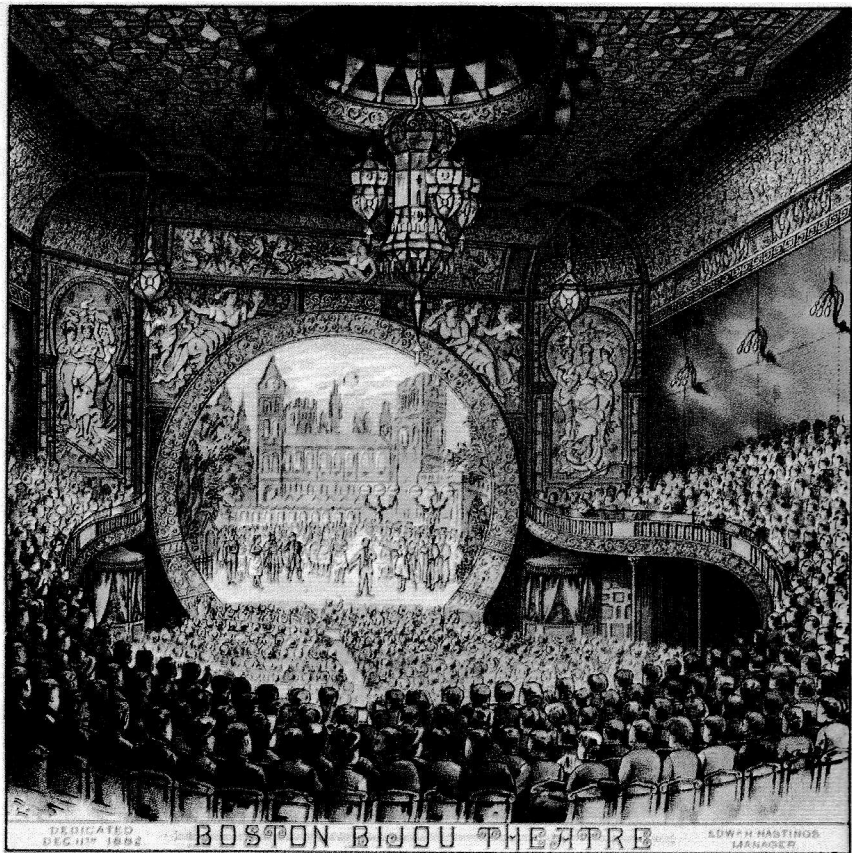
SPARKS, whence th' electric spark of art has played,  
Placing the mimic world in light more clear,  
Are those our close observers well shall see,  
Real life, bright exposition of ideas,  
Except in the bounds that nature right must deem,  
Such shall the pictures be, shown in our "DREAMS."

NAT. CHILDS.

GEORGE FURDY, MUSICAL DIRECTOR      FRED D. FOSS, BUSINESS MANAGER  
FRANK W. SANGER.....MANAGER

BOSTON JOB PRINT, ALDEN STREET.





The Bijou Theatre, which opened in 1882 after a complete renovation of the Gaiety Theatre building, was one of the most distinctive theatres in Boston's history. The Bijou was the first theatre in the United States to be lit with electric light. An intimate second-floor theatre with about 800 seats, the Bijou was decorated in Moorish or Egyptian style, with a unique round proscenium. It opened with Gilbert and Sullivan's *Iolanthe*, and remained a home for British, American, and French operetta.

Opposite, the area of Washington that included the Adams House hotel (the large building to the left, later Keith and Batcheller's Mammoth Museum and now the Paramount Theatre), the Melodeon (with the large arched window, later the Bijou Theatre), and the 1852 Boston Theatre (the tallest building, later the site of the Keith Memorial Theatre, now the Opera House).



ENTRANCE TO THE NEW BOSTON THEATRE, WASHINGTON STREET.

# BIJOU

The Parlor Theatre and Home of Comic Opera.

*E. H. HASTINGS,* - President and General Manager  
*H. B. LONSDALE,* - Business Manager

MONDAY, DECEMBER 15th.

*First Production in Boston of the new Comic Opera.*

## DESIRÉE,

BY AN AMERICAN AUTHOR AND COMPOSER

*Mr. JOHN PHILIP SOUSA,*

AND  
*Mr. EDWARD P. TABER, of Washington, D. C.*

PRESENTED IN A MOST COMPLETE MANNER

BY THE  
**McCaul Opera Comique Co.**

(JOHN A. McCAULL, Proprietor and Manager.)

CAMMAN, REATING & CO., PRINTERS

**KEITH & BATCHELLER'S**  
NEW  
**MAMMOTH MUSEUM**

563 TO 567 WASHINGTON STREET,  
BOSTON, MASS.

Natural and Artificial Wonders, Curiosities, and Marvels, and a cheap, select, and elegant Stage Entertainment lasting one hour, all for Ten Cents. We offer our patrons, at all times, the best that money can procure.

Regular hours, 10 to 12 A.M., 1 to 6, and 7 to 10 P.M.  
B. F. KEITH,  
GEO. H. BATCHELLER, Proprietors and Managers.

**BOSTON'S AMUSEMENT CENTRE.**



**This Week,** Last appearance of the **MICHIGAN COLORLESS FAMILY.** First appearance of **MISS EDITH HAYNES** the **Handless Wonder,** Born without hands, yet Sews, Knits, Writes, Etc., as well as any lady. Last week of **Burnham's Colossal Panorama.** The Refined Character Sketch Trio, **Mr. and Mrs. R. A. Brennan** and **Capt. George Liable** in their beautiful Ohio Entertainment of Songs, Duets, Trios and Witty Repartee; these artists have a national fame. The well-known Comedians, Vocalists and Dancers, **Fox and Ward.** The Old-Time Boston Favorites, **Barker and Plummer,** in their great Afterpiece, "**McPeck's Bad Boy.**" **The Herodian Mystery.** **The Three-Headed Songstress.** **The Burning Ship.** A refined novelty and musical soiree will be given every hour.

**Admission to see all, 10 Cts. Chairs 5 Cts.**

(OVER)

CARLIN, KEATING & Co., PRINTERS, 603 WASHINGTON ST., BOSTON.

In 1884, B. F. Keith and George Batcheller established Keith and Batcheller's Mammoth Museum, a dime museum, on the site of the old Adams House hotel, almost next door to the Bijou Theatre. Admission, including the theatrical performance, was ten cents, but seats in the "Auditory" cost five cents more.

**BOSTON'S AMUSEMENT CENTRE.**





# MUSEUM,

565 and 567 Washington Street, two doors from Boston Theatre.

Messrs. KEITH & BATCHELLER . . . Proprietors and Managers.

46th and 47th

## GRAND SACRED CONCERTS,

— Sunday, May 10, 1885. —

ADMISSION, including Reserved Seat, 15 CENTS.

CONCERTS AT 3 AND 8 P. M.

DOORS OPEN AT 2.30 AND 7.30 P. M.

### PROGRAMME.

1. PIANO SELECTIONS.....*Sullivan*  
MR. GEORGE HEPWORTH.
2. SONG. "Kathleen".....*Westendorf*  
MR. J. T. CAIRNS.
3. "Wont you Buy my Pretty Flowers".....*Pearley*  
ALDEN'S SISTERS.
4. SONG. "Come in and Shut that Gate".....*Herbert Leslie*  
MISS PAULINE POGGIE.
5. SILVER BONE SOLO.  
MR. JOHN BARKER.
6. DUET, SELECTED.  
MESSRS. CAIRNS AND BYRNE.
7. DUET. "In the Starlight."  
THE CHERUBS.
8. "Come Away".....*J. T. Cairns*  
LAFAYETTE QUARTETTE.
9. ACCORDEON SOLOS AND IMITATIONS.  
MR. WILLIAM EDSON.

## CREAT BILL

For next week. Two grand double companies. Twenty-five new Artists. Every feature and every face new, and include

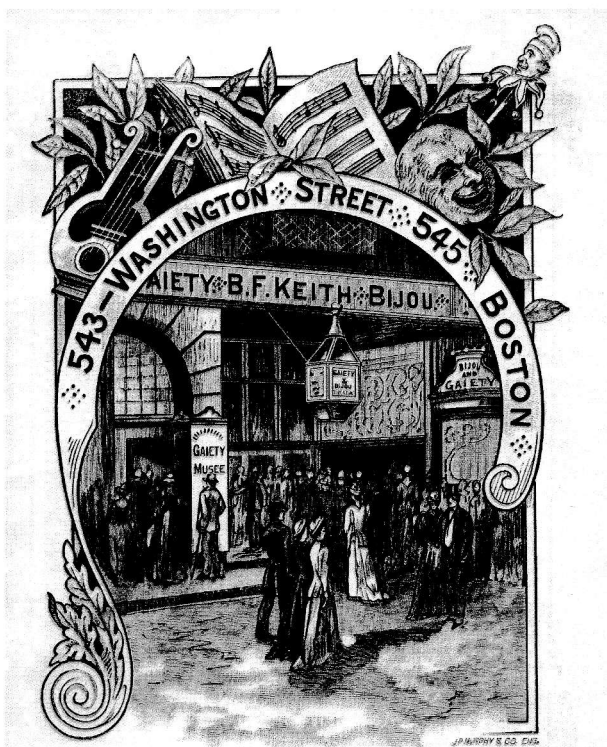
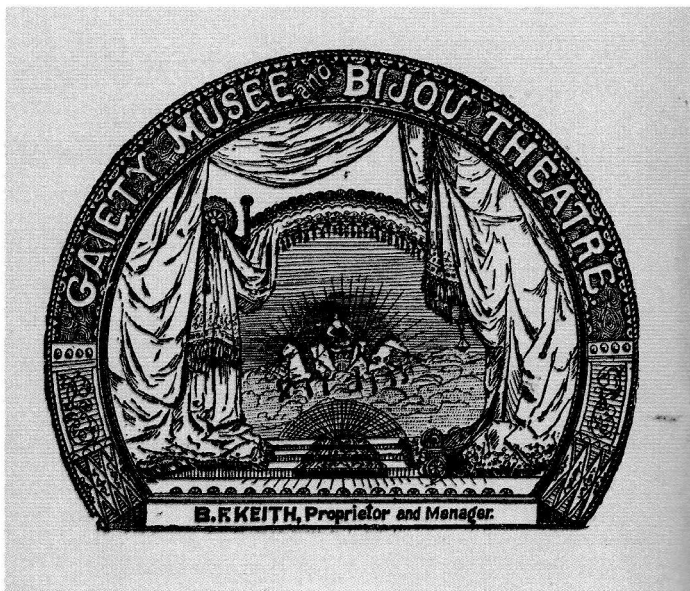
- FOSTER and HUGHES. Famous, eccentric, and grotesque.  
 THE VENTINIS. Hat splinters extraordinary. The very greatest in the world.  
 MISS FANNIE LEWIS. In an album of bright, sparkling musical gems.  
 MISS MAUD CHATWOOD. Return of charming little lady. Everybody's favorite.  
 THATCHER AND ADAIR. Irresistibly funny. You will be compelled to laugh at their drolleries. They will introduce a sketch, "A Countryman's Visit."  
 MR. and MRS. DAN LACY. Celebrated Irish character personators.  
 MR. WILLIAM EDSON. The champion accordion soloist, in his solos and imitations, and the difficult feat of playing with his chin and ear.  
 BARKER and POSTELL. In a screaming sketch.  
 ZOLA. The handsomest lady in the world, and the greatest of all mysteries, will be presented in our Wander Hall at a cost of \$1,500.  
 ROLLA. Also a very handsome and mysterious lady, will be exhibited.

### CATS AND KITTENS.

Owing to the great success of this exhibition it will be continued all through next week. See that Tiger Cat that weighs 24 lbs. Punch and Judy still occupies twenty minutes, killing both friends and enemies, and you cannot miss seeing our door keeper as you enter from the street.

Museum open from 10 till 10. Admission, 10 cts. Seats in Auditory, 5 cts. extra.

Alfred Mudge & Son, Printers, 24 Franklin St., Boston.



In 1885, within a year of establishing their dime museum, Keith and Batcheller had taken control of the Bijou Theatre and moved their Mammoth Museum two doors to the north, to the ground floor of the building that housed the second-story Bijou Theatre. One admission secured admission to both the theatre and the Gaiety Musée (named for the Gaiety Theatre that preceded the Bijou). The Bijou presented continuous variety performances — and thus became the first vaudeville theatre.

# VAUDEVILLE SALOON.

UNDER THE DIRECTION OF  
**W. MARSHALL**

(LATE OF THE NATIONAL THEATRE.)

The Manager respectfully announces to the Public that this new place of Amusement, on the corner of Boylston and Washington streets, will open on

**MONDAY EVENING, JULY 13th,**

With the following Company,

<b>Messrs.</b>	<b>Curtis,</b>	<b>O. Marshall,</b>
<b>Spear,</b>	<b>Nason,</b>	<b>Leman,</b>
<b>Porter.</b>	<b>E. Jones,</b>	<b>and</b>
<b>Haynes,</b>	<b>Saunders,</b>	<b>W. Marshall.</b>
<b>Mesdames</b>		<b>Meer,</b>
<b>Cantor,</b>		<b>Barnes, &amp;c.</b>

The Hall, so well known as **BOYLSTON HALL**, has been neatly and tastefully fitted—well ventilated, and by strict attention in the production of a series of Light and elegant Pieces—interspersed with Music and Dancing, and the preservation of perfect order and decorum, he hopes to merit and receive the patronage of the public.

**On Monday Evening,....July 13th, 1840,**

Will be acted the admired Farce of

## RAISING THE WIND!!

Plainway.....Mr Spear	Sam.....Mr Porter
Painwood.....Saunders	Richard.....O. Marshall
Jeremy Diddler.....Leman	Waiter.....Nason
Peggy.....Mrs Cantor	Miss Durable.....Mrs Meer

After which, **LA PETITE TAGLIONI** will Dance her  
**GRAND FAIRY DANCE!**

Song, When the Trump of Fame...Mr Curtis

**SCOTCH PAS SEUL, La Petite Taglioni**

To Conclude with the popular Piece of the

## RENDEZVOUS

Quako.....Mr Saunders	Smart.....Mr W. Marshall
Simon.....Porter	Sophia.....Mrs Cantor
Charles.....Leman	Ross.....Mrs Meer
Bolding.....Haynes	Lucretia.....Mrs Barnes

The Centre Range of Seats reserved for Ladies and the Gentlemen accompanying them.

**ADMISSION.....25 CENTS!**

Tickets for Sale, during the Day, at Fisher's Dramatic Repository, No. 71 Court Street—at the Bar of the Lafayette Hotel, opposite the Hall; and at the Door during the Evening.

## MRS. W. H. SMITH

is Engaged. Due Notice will be given of her first Appearance.

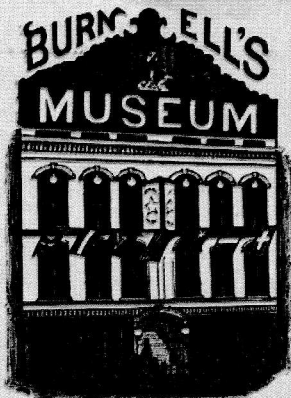
D. Hooton, Printer, Hashian's Building, Court Street.

The term Vaudeville did not originally suggest a variety entertainment, as the term was to be applied by B. F. Keith in the 1890's. The Vaudeville Saloon was in fact a refurbished Boylston Hall, which was situated upstairs in Charles' Bulfinch's Boylston Market, at the southeast corner of Boylston and Washington Streets. The Vaudeville Saloon was rather a conventional theatre, whose program typically began and ended with a comedy or farce, and had an Olio (variety) section between. Boylston Market was the first public building in Boston to be lit with gaslight.

# **BURNELL'S MUSEUM MENAGERIE AND THEATRUM**

(511 Washington Street, near Boylston Market)

**Opens at 8 o'clock in the Morning, and  
remains open till 10 o'clock at night.**



**3 GRAND  
Performances 3  
DAILY:**

**11 o'clock, Morning,**

**3 o'clock, Afternoon**

—AND—

**8 o'clock, Evening**

**REMEMBER, THERE ARE SIX SEPARATE AND DISTINCT**

## **6 ENTERTAINMENTS, 6**

**MUSEUM DEPARTMENT,**

**LIVING CURIOSITY DEPARTMENT,**

**MECHANICAL DEPARTMENT,**

**WORLD'S NOVELTY DEPARTMENT,**

**ANIMAL AND BIRD DEPARTMENT,**

**AND THEATRUM DEPARTMENT,**

**All for one price of Admission,**

### **ONLY 25 CTS.**

**Making it the Cheapest, Most Amusing, Instructive, and Desirable Place of  
Amusement in the City.**

**F. A. Searle, Printer, Journal Building, 118 Washington Street, Boston.**

In 1874 the proprietors of Boylston Market developed their own property to the south as a museum and theatre, which was first known as Burnell's Museum, Menagerie, and Theatrum.



# BURNELL'S MUSEUM MENAGERIE —AND— THEATRUM,

511 WASHINGTON STREET,  
5 Doors south of Boylston Market,  
Occupying Seven Spacious Halls.

**GREAT FAMILY RESORT!**  
OPEN DAY AND EVENING, ALL THE YEAR ROUND.  
The Only Day Amusement in the City.

MAJ. J. BURNELL.....MANAGER

SPREAD BOTH SIDES OF THIS BILL.  
**ALL FOR ONE PRICE OF ADMISSION!**

**3** { PERFORMANCES DAILY } **3**  
11 MORNING,  
8 AFTERNOON,  
8 EVENING.

**PAY US A VISIT**

and become satisfied that

**There is More to be Seen  
FOR THE MONEY,**  
Than at any other Place of Amusement in  
America.

**MISS ANN E. LEAK  
BORN WITHOUT ARMS.**

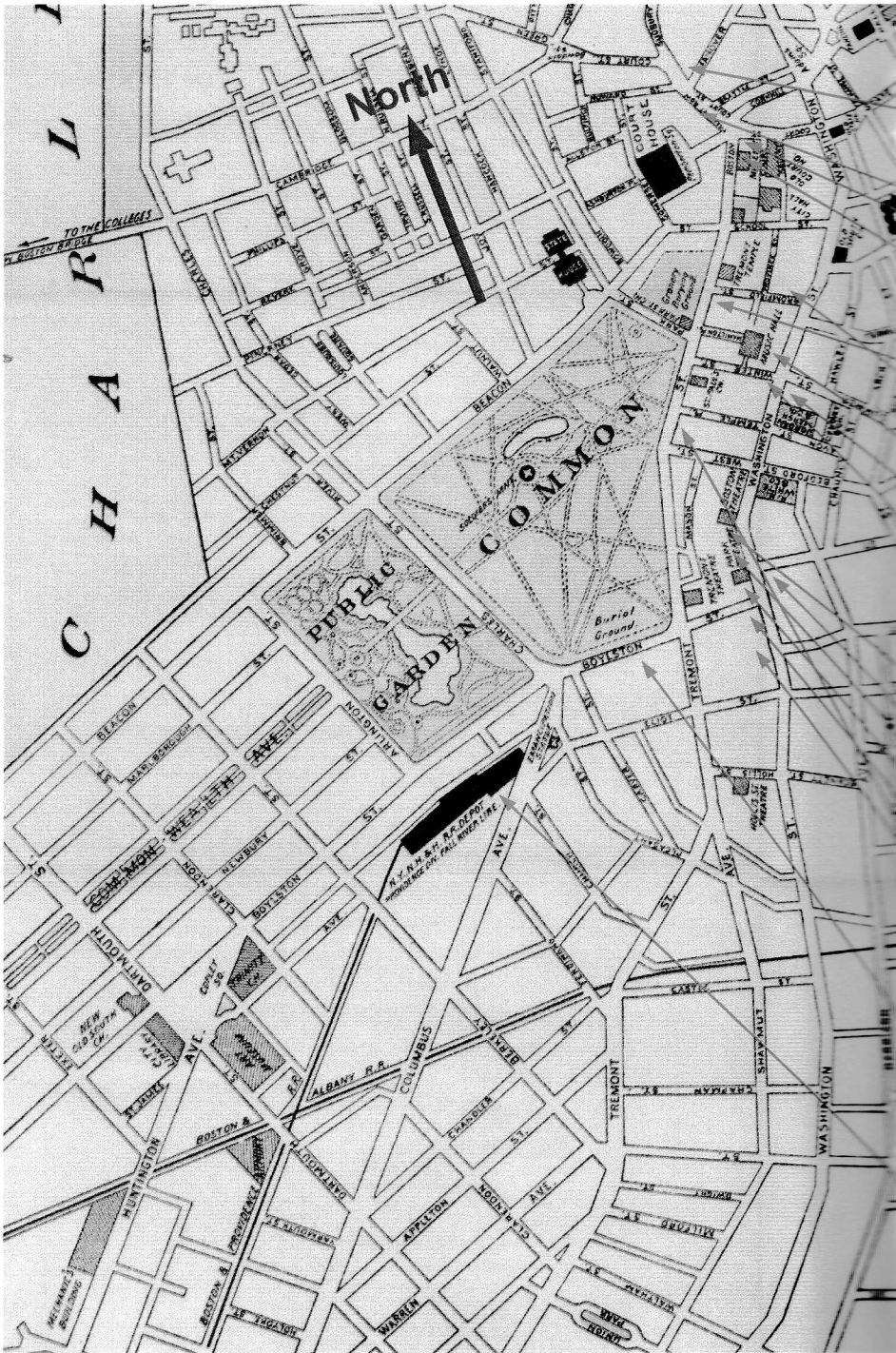
Having been awarded a SILVER MEDAL for her Embroidery, at  
the late Mechanics' Fair.

She Crochets, Braids Hair, Embroiders, Writes, Sews,  
Knits, and uses the Scissors, does Fancy Work of various description,  
uses the Knife and Fork with ease and grace; and, in short,  
does everything with her toes, that persons more favored are unable to do with  
their fingers.

CORRECT REPRESENTATION OF  
**THREE of the GREATEST CURIOSITIES**  
EVER BORN AND LIVED!







PREPARED BY F. W. WILSON. MAP FROM "HOW TO SEE BOSTON," ED. MOSES KING,  
PUB. MACULLAR PARKER CO., BOSTON, 1895

# DIME MUSEUMS AND THEATRES IN DOWNTOWN BOSTON

## UPPER TREMONT STREET and SCOLLAY SQUARE AREA

- Nickelodeon** (109-113 Court St., between Sudbury and Hanover St.) 1888  
(earlier Winter Garden)
- Columbian Museum** (Milk Street at Liberty Square, moved to Tremont St.) 1803
- Austin and Stone's Dime Museum** (4 Tremont Row, Scollay Square) 1845
- New England Museum** (76, later 75 Court St.) 1818  
(later Harrington's Mus., Olympic Saloon, Olympic Th.)
- Boston Museum II** (Tremont St., between Court St. and School St.) 1845
- Boston Museum I** (Tremont St. at Bromfield St.) 1841  
(later Horticultural Hall II, New Dime Mus., Columbian Hall)

## UPPER WASHINGTON STREET and DOWNTOWN CROSSING AREA

- Aquarial Garden** (21 Bromfield St., between Province St. and Washington St.) 1860
- Lee's Saloon** (253 Washington St.) 1841  
(later Olympic Saloon)
- Boston Aquarial and Zoological Gardens** (Washington St. at Summer St.,  
Central Court, now Downtown Crossing) 1860  
(later Barnum's Mus. and Aquarial Gardens, Adelphi Th., Th. Comique)
- Arcade Saloon and Garden** (295 Washington St., at Winter Pl.)

## LOWER WASHINGTON STREET

- Gaiety Musée and Bijou Theatre** (545 Washington St.) 1840  
(earlier Lion Th., Mechanics' Institute, Melodeon concert hall, Gaiety Th., Bijou Th.,  
later Bijou Opera House)
- Apollo Garden** (572-576 Washington St., above Hayward Place)
- Keith and Batcheller's Mammoth Museum** (563-567 Washington St.) 1884
- New Dime Museum** (631 Washington St., above Boylston St.)
- Boylston Hall** (above Boylston Market, Boylston St. at Washington St.) 1811  
(later New York Mus., Vaudeville Saloon)
- Burnell's Museum** (511 Washington St., renumbered 661-667 Washington St.) 1874  
(later Boylston Mus., World's Mus., World's Th., Lyceum Th., Gaiety Th., Gayety Th.)

## LOWER TREMONT STREET and BOYLSTON STREET AREA

- Washington Gardens** (Common St., now Tremont St., at West St.) 1815  
(later Vauxhall, City Theatre)
- The Zoo and Sans Souci** (Boylston St., near Tremont St.) 1897  
(earlier old Boston Public Library, later Colonial Th. site)
- Park Square Garden** (Park Square, near Providence R.R. Depot) 1883



# NEW BOYLSTON MUSEUM

AND STAR NOVELTY THEATRE,

667 Washington street, - - - - Boston, Mass.

G. E. LOTHROP..... Manager and Proprietor  
 W. H. WHITTENECT..... Business manager  
 GEO. KURTZ..... Stage manager



**ENGAGEMENTS FOR THE WEEK:**

PAT ROONEY, J. W. McANDREWS,  
 DE ALVE SISTERS, SAM DEARIN,  
 MISS AMY BENNETT, MISS EMMA HOFFMAN,  
 EVELINE CONSTANTINE, VIRO FARRAND,  
 ANTOINETTE CORSSI, NELLIE ABBOTT,  
 WILLIAMS AND MACARTY, C. H. ATKINSON,  
 MILLIE YOUNG, ADA EASTMAN, GEO. KURTZ,  
 NELLIE BROOKS, EMMA MARDEN,  
 AL. W. DECKER, JEROME AND CAMERON,  
 T. CHAS. HOWARD, W. J. STANTON.

ARTISTS OF RECOGNIZED ABILITY DESIRING DATES, APPLY TO

**CARLISLE & CAVERLY, Agents,**

141 EIGHTH STREET, NEW YORK.

6-11

Burnell's Museum was short-lived. In 1874 it was replaced by the Boylston Museum and Star Novelty Theatre, which catered particularly to ladies and their children. Note that the street number is different from the Burnell Museum on the same site (667 Washington Street, no longer 511), owing to street renumbering as a consequence of the Boston fire of 1872.



**GRAND REOPENING OF THE  
BOYLSTON MUSEUM**

(Formerly Burnell's.)

**No. 511 WASHINGTON STREET.**

MANAGER.....D. K. PRESCOTT

**OPEN DAY AND EVENING,  
FROM 8 A. M. TO 10 P. M.**

**Cheapest Respectable Place of Amusement in N. England**

FIRST APPEARANCE IN BOSTON OF MISS



**JENNIE QUIGLEY,**

From Glasgow, Scotland.

24 years of age, 28 inches in height, weighing 32 pounds—most beautiful and accomplished little lady ever before the public.

**LITTLE BORNEO FAMILY**

**MODERN SAMSONS**

PRESCOTT'S REMARKABLE

**EDUCATED BIRD.**

**PROFESSOR WORTH'S  
VAST COLLECTION OF CURIOSITIES**

FROM ALL PARTS OF THE WORLD.

**FIRST-CLASS PERFORMANCE in the LECTURE ROOM**

AT 3 AND 8 O'CLOCK P. M.

**20 CAGES OF ANIMALS and BIRDS.**

**RENOWNED HAPPY FAMILY!**

**WAX STATUARY OF REMARKABLE PEOPLE**

And Thousands of other Interesting Curiosities.

CRISPIN & DYER, 17 Beach Street, Boston.



T. H. PLUMER, Director of Amusements.

No. 4. OFFICIAL PROGRAMME. Vol. 3.

Thursday, Friday & Saturday Afternoon & Evening,  
NOVEMBER 16, 17 and 18, 1876.

The Performance will commence with the ever popular

GRAND FIRST PART OF PARLOR MINSTRELS.

BONES. GEO. GARLAND TOMMY WILLIAMS	4 END MEN 4 T. H. PLUMER, Interlocutor.	TAMBOS. CHAS. H. YALE RALPH KELLEY
OPENING OVERTURE.....Orchestra	PINS AND NEEDLES.....Chas. H. Yale	LEAFY BIRCHES.....Miss Nellie Brooks
THE EVENING.....Miss Emma Marten	OVER THE HILLS TO THE GONNOR HOUSE.....GEO. GARLAND	FOUR CHINESE.....Tommy Williams
RAIM OF GILLIES.....Ralph Kelley	LETTER IN THE CANDLE.....Miss Nellie Brooks	FINALE.....Company

PART SECOND. — CLIO.

J. D. LEAVITT ERWIN THOMAS  
Motto Songs. Pedestal Choc.

BARNY FERGUSON  
Irish Specialties.

THOS. F. DEGHAN & Master  
In their Club Stringing Act.

MISS FANNY REYNOLDS  
In her Solo Comed-Songs.

The Afternoon Performance will conclude with  
Locke's version of

The Yankee Duelli

Miss Peleg W. H. Ponsrke, Esq. Jr.  
CAPT. WALKER.....Yank  
ARANDA.....Miss K.

27 Good order is expected in this Hotel  
be conferred on the proprietor than by  
the part of the audience or attacks.

GET YOUR PERFUMERY & TO

STEREOPHON  
SEXTON STREET, near Fruit Store.  
NEW YORK.

# Boylston Museum

1877. SEASON OF 1878.

G. E. LOTHROP.....Proprietor and Manager  
JOHN McADDEN.....Stage Manager

## ANNOUNCEMENTS.

EVERY FRIDAY EVE., AMATEURS' NIGHT  
When an opportunity is offered to all who are desirous of adopting the Stage as a profession  
to make their debut. Applications will be received by the STAGE MANAGER.

All Songs and Music sung at the Boylston Museum are furnished by John F. Perry & Co.,  
528 Washington Street.

PROGRAMME OF ENTERTAINMENT FOR THE WEEK, ENDING MAR. 16.

The performance will commence with the

GREAT LONDON FEMALE MINSTRELS.

BONES, NED WAMBOLD, GEO. KURTZ.	INTERLOCUTOR, LOUIS DeMAR.	TAMBOS, W. C. TURNER, JAMES McKEE.
OVERTURE.....Frank Heindol's Orchestra	Old Sweet Home.....J. McKee	The Days when I was young.....Miss Spray Arlington
Beautiful Girl.....Ned Wambold	Bodie's Prayer.....George Kurtz	Think of double duty.....Miss Nellie Brooks
Speak to me, Speak.....W. C. Turner	Turner's Request.....by Company	Finale, America, on Land and Sea.....

Part Second, Novelty Entertainment.

MR. J. D. ROOME,  
The Von Balow of Banjoists.

The Refined German Duo,

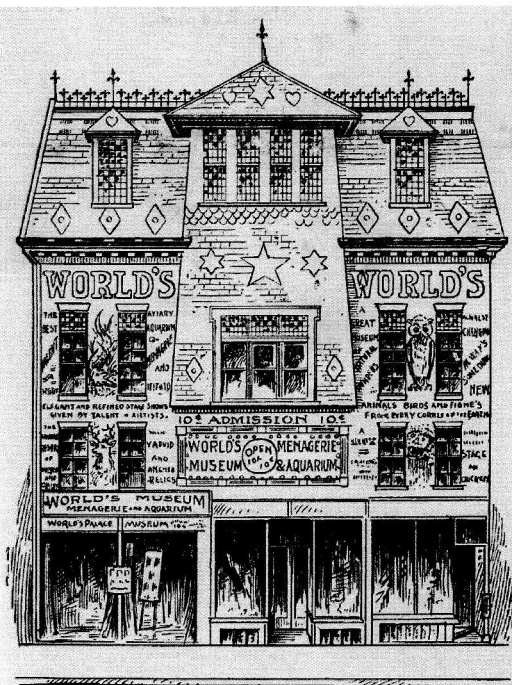
REYNOLDS AND WALLING

Appearing in a new Musical Melange, entitled  
"DOT LITTLE STONE COY."

Gretchen.....Dave Walling  
Father Weaver.....Barney Reynolds  
Henrich.....Miss Nellie Brooks  
Introducing the Spicy Music from "Madam Angel," and "Chilperic," also O'Reardon's beautiful  
Song and Dance, "Marriage Belts."

First appearance this Season of

GEORGE KURTZ AND NELLIE BROOKS,  
In their original, Pathetic Musical Sketch THE SOLDIER'S ORPHAN CHILD.



THE WORLD'S MUSEUM, BOSTON.

THE MAGNIFICENT NEW STRUCTURE JUST COMPLETED BY DR. GEORGE E. LOTHROP.

The Boylston Museum was succeeded in 1885 by George Lothrop's World's Museum, whose fantastic facade (above) became a Boston curiosity. Inside, the attractions were if anything less sophisticated than those of its predecessors, Burnell's Museum and the Boylston Museum. Apparently greater emphasis was given to performing animals, less to the quality of the stage performances.

<b>MUSEUM</b>
OPEN FROM 10 A. M. TO 10 P. M.
Seven Entertainments in the Auditorium Daily, by Three Separate and Distinct Companies, at the following hours: 11.15 A.M.; 1.30, 3, 4.30, 7, 8.15 and 9.30 P.M.
Prof. Murdoch's Original <b>PUNCH AND JUDY.</b> 6 - LARGE CURIO HALLS - 6
The Menagerie contains <b>40 - Cages of Rare Animals - 40</b>
<b>A Full Crowned African Lion,</b> A Royal Bengal Tiger, two Alaska Sea Lions, one Nyctan, two sacred crowned Cranes, one South American Tapir, one Aracanda, one Curassaw, six Flying Foxes, one King Lory, two Boas-Constrictors, one Leopard, three Black Bears, Sacred Cow, large cages of Monkeys, Lynx, Lion Slayer, Foreign Birds in endless variety, one Silver Pheasant.
<b>Bijou, the Trick Elephant,</b> Who plays the Mouth Harmonica.
<b>The Smallest Military Men Living</b> GEN. SPECK AND GEN. RHINEBACK.
<b>AQUARIUM.</b>
Also, Monster Turtles, Alligators, Seals, Monster Sea Lions, etc.
<b>BOHEMIAN GLASS-BLOWERS.</b> The oldest and finest company in the world with their world of novelties, and the mammoth Glass Steam Engine, <b>CRYSTAL GEM.</b> A marvel of mechanical skill.
The largest Cage of Monkeys ever exhibited. The finest collection of brilliant plumed birds, song birds, and the great <b>KING VULTURE.</b> Valued at \$5,000.
<b>THE TWO ALBINO MONKEYS</b> A rare freak of nature.
The Animals and Sea Lions are fed at 10 A.M. and 5 P.M., daily. Admission to Every Department, including Auditorium,
<b>Ten Cents! Ten Cents!</b>

Use the "NEW FLORENCE" OIL HEATING STOVE, FOR OFFICES, etc., etc. 43 West St., Boston.

Watch for Grand Opening of Variety Store, 631 Washington St., Boston, Oct. 1.—Everything at Cost for One Week.

# WORLD'S MUSEUM

## MENAGERIE AND AQUARIUM

301, 303, 305 & 307 WASHINGTON STREET, BOSTON.

Vol. 1. FOR THE WEEK OCT. 26 TO OCT. 31, 1895. No. 4.

**RE-OPENED 1870.**  
**B. SPINOZA & CO.**  
 Importers of Domestic Cigars,  
 1000 WASHINGTON STREET,  
 Boston.  
 Sole Manufacturers of the Boston Cigar and Silver Bell Cigars, the Best & Most Pure Cigars in Boston.  
 FOR LATEST NOTICES IN  
 Window Tickets & Card Lettering.

**GILL'S** 40 School St.  
**M. H. Graham & Co.**  
 FINE BOOTS AND SHOES  
 110 & 112 Washington St., Boston.  
 GENTS 50 HAND-MADE SHOE & SPECIALTY  
 SEARS & ROEBUCK'S OWN 5c CIGARS  
 WILLIAMS' 1c SMOKELESS  
 HAVANA & DOMESTIC CIGARS  
 C. P. GRAMMER, FLOREST,  
 FRESH OUT EVERY DAY.  
 Orders for Wedding and Fanciful  
 promptly attended to at short notice.  
 TELEPHONE 1550.

**CHAUNY HOTEL**  
 105 & 107 Chantry Street,  
**GOOD RESTAURANT**  
 OPEN ALL NIGHT.  
 ROOMS MODERATE.  
 One Block from the World, off Essex St.  
**FRED L. McLAUGHLIN**  
 Restaurant and Wine Store,  
 Nos. 41 and 43 Essex Street,  
 Boston. Specialties for Weddings and Parties.  
 1000 Washington Street, Boston.

**PROGRAMME.**  
 There will be given, commencing in the afternoon, 4 o'clock, at the following hours:  
 11.15 A. M.; 1.30, 3, 4.30, 7, 8.15 and 9.30 P. M.  
 A limited number of seats reserved for Ladies and Children and those accompanying them. Seats are not to be reserved by express advance, and can be purchased at the full price of 25 cents.  
**PRICE ONLY 5 CENTS.**  
 PRINCIPAL ATTRACTIONS FOR THE WEEK:  
**A \$10,000 Challenge Feature.**  
**THE TWO SMALLEST HORSES ON EARTH,**  
 BELVA LOCKWOOD, 14 inches high. MINE ZARATE, 16 inches high.  
**THE ORIGINAL ELASTIC SKIN MAN,**  
 The Wonder of the nineteenth century. Never before exhibited in this city.  
**COL. COBBEN,**  
 The Great Arabian Giant, 7 feet 2 inches tall and weighs 600 pounds.  
**THE WONDERFUL ARMLESS MAN,**  
 Who paints beautiful pictures in oil.  
**THE EIGHTH WONDER OF THE WORLD,**  
 A Working Model of a Handicap Wheel Locomotive, composed entirely of Gold and Silver, and cost \$1000.  
**Admission to all, 10 Cents.**  
 N. B.—The strictest decorum will be enforced, as it is the determination of the management to make this a resort for Ladies and Children, and nothing will be tolerated so prejudicial to their comfort and enjoyment.  
 Ladies' Seating can be had by charge of experienced waitresses.  
 Friends to request any attendance in lack of politeness on the part of any employee in this establishment.  
 Packages may be delivered in whole or in part free of charge.  
 Friends will have Office for last orders.

**A \$7 PICTURE FOR \$4**  
 For Cash or installments.  
**COHN & GREENBERG,**  
 109 COURT ST., Boston, Mass.,  
 Room 10.

**Fancy's Photographic Studio,**  
 43 WINTER STREET—45.  
 Special Photographs taken for \$5 to \$8.  
 All American made. Superior work and  
 prices. All the most popular styles and  
 subjects prepared to the point.

**LINCOLN'S**  
 Family Wine Store,  
 No. 21 ESSEX STREET.  
 —TRY— **JESSOP'S CELEBRATED**

**CHEWING**  
**KISSES**  
 37 TREMONT ST. and 370 WASHINGTON ST.

**For BLURRING EYES**  
 Consult **AYER'S** Optician,  
 130 Washington Street, opp. Battle St.  
**RELIEF CERTAIN.**  
 Has cured the most obstinate cases of  
 E. & J. WILSON,  
**Teachers of the Violin**  
 Music Instruction and Coaching,  
 30 Tyler Street, Boston.  
**64c for HOOD'S SARSAPARILLA.**  
 Hood's Sarsaparilla, 64c per bottle. Hood's Sarsaparilla is a very large medicine bottle. It is the only medicine bottle of its kind in the world. It is the only medicine bottle of its kind in the world. It is the only medicine bottle of its kind in the world.

**WOODWARD BROS.,**  
 42 Bowdoin Street,  
 ESTABLISHED 1869.

**BUSHBY & MACURDY,**  
 621—WASHINGTON ST.—621  
**The Finest Portrait Photographs**  
 IN THE WORLD.  
 And they cost no more than the poorest pictures made in any other establishment. They are the only pictures that are not retailed by America.

**Scottish Blue Bell House,**  
 131 SALVADORE STREET,  
 BOSTON, MASS.

**Alas, Wines, Liquors & Cigars**  
 BENS TO LAY BY THE ONE OF US FILED.

**UPSON'S**  
**WASHING**  
**FRENCH**  
**PROCESS**  
**SOAP**  
 Makes clothes white as if new. It is the only soap that is made in America. It is the only soap that is made in America. It is the only soap that is made in America.

**WOODWARD & BROWN — PIANOS — 175a Tremont Street, Boston.**

KIMBER CHICKERING PHOTOGRAPHER 12 West Street, Boston.

OVER 12,000,000 BLACKSTONE CIGARS SOLD DURING THE YEAR 1890.



of Excellence, Purity, and Refinement.

EVERY SUNDAY NIGHT.

TRY WAITT & BOND'S NEW 10 CENT CIGAR: "E. V. D. A."

Our  
**A. & F.**  
'63 5 Cent Cigar

Has gained equally as great a reputation as the "J. A.", by merit alone, and is the finest 5 Cent Cigar that can be manufactured.

None Genuine unless Stamped

**A. & F. '63.**

**ALLES & FISHER,**  
Factory and Salesroom:  
4, 6, 8 and 10 CAMBRIDGE STREET,  
BOSTON.

**PILLING'S MUSEUM,**  
661 TO 667 WASHINGTON STREET, BOSTON.

FRANK J. PILLING, - - - Manager.  
GEORGE H. SNOW, - - - Superintendent.

Open from 10 a. m. to 10 p. m.

Horse Cars to all Points Pass the Doors.

**SPECIAL NOTICE!**

Stage Performances Continuous from 10.30 A.M. to 10.00 P.M.

Applications for advertising space in this programme may be made to William F. Knox, at the Box Office.

WINDUP DANIEL & CO., PRINTERS, 120 NASSAU STREET, BOSTON.

**SMOKE**

**"O. C. A." CIGARS.**

MADE BY UNION WORKMEN.

A Genuine 10 ct. Cigar



Sold Everywhere for 5 Cents.

Better than any, and as good as the majority of Cigars sold in this country. The quality is superior, high, and very pure. It is a quality that they can not make more than 10 cents, but they are giving the value of 5 cents by charging 10 to 15 cents.

**"WONDERFUL!"**

In what everyone says of Dr. R. M. Fogg's **NEW PAIN-EXPELLER TAPE**, as admitted by him for the public use and satisfaction of teeth. We guarantee you absolutely no pain, a tried, refreshing sleep and some awakeners with the offending teeth troubling. Endorsed by the Medical and Dental Professions. First-class Dental Work at reasonable prices.

**DR. R. M. FOGG,**  
**DENTIST,**  
No. 2 Park Square (Room 2), Boston.

MUCH SATISFACTION is expressed by those who use Gibson's Rye Whiskies of natural flavor. They are without exception super-excellent, and are absolutely pure. Call at

**JOHNSTON'S,**  
25 ESSEX STREET,  
and get Gibson's XXXX.

The **CRAWFORD SHOE** Hand Sewed, \$4.00  
French Welt, 3.00

FOR SOLID COMFORT THERE IS NO SHOE MADE LIKE IT.  
511 Washington Street, Boston.  
23 Park Square, Boston.  
Under English name Stone, Boston.  
42 Green Street, Boston.  
1108 Washington Street, Northway.  
56 Main St., Charlestown Dist., Boston.

In 1888 the World's Museum was sold to Frank Pilling. For clues to the intended audience of a theatre it is usually instructive to take note of the advertisements in the program. Pilling's World's Museum was clearly no longer a place that catered to ladies and children, as the Boylston Museum had announced: most of the advertising is for cigars, and the masthead at the top of the program suggests that this was now an establishment primarily for gentlemen.





## LINES

WRITTEN BY A. E. LANCASTER  
AND READ BY  
MISS ANNIE RUSSELL

*On the Occasion of the Final Performance at the Lyceum  
Theatre, on the Evening of March Twenty-second,  
Nineteen Hundred and Two, previous to  
the demolition of the building*

LADIES AND GENTLEMEN :

Or, shall I say  
Friends of the actor, lovers of the play,  
'Tis often asked : Were Shakespeare living now  
What dramas would he write, and why, and how ?  
Would he apply the kodak of his brain  
To modern life's too much entangled skein.

In 1892 the building that began as Burnell's Museum was renovated as a conventional theatre, with no museum. The Lyceum Theatre presented comedy, operetta, and vaudeville for ten years before the building was demolished in 1902.

# GAYETY

## THEATRE

### BOSTON MASS.



DINE AT

## The Pekin

### Restaurant

SPECIAL DINNERS EVERY DAY

*Finest Chinese and American Restaurant in Boston*

684 WASHINGTON STREET  
BOSTON, MASS.  
*Near Gayety Theatre*

Excellent Service  
Prices Reasonable  
Music Every Day



**We Offer**

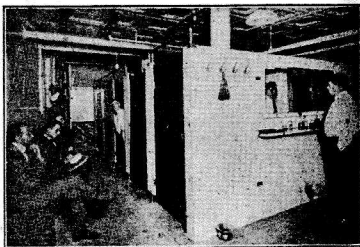
Vacation Club—R  
Savings—Insurance  
ance operated by the  
Insurance Company  
Savings Deposits  
may be made at an  
OPEN  
**CITIZEN**  
Member  
179 SUMMER STREET

**STAPLES C**  
40

## Niagara Shower Baths

Bath with  
Toilet Articles and  
Turkish Towels,  
Soap, etc., 35 cents

696 Washington St.  
Near Gayety Theatre



## GAYETY THEATRE

WEEK OF JUNE 30, 1924 TWICE DAILY  
2.10 and 8.10 P. M.

### COLUMBIA BURLESQUE

Is Presented in This Theatre by the Same Companies That Appear at the Columbia Theatre, Times Square, New York City

JEAN BEDINI Presents

1924

## “PEEK-A-BOO” (Inc.)

Music by Melville Morris and William Galvin, Staged by Allen K. Foster  
Produced by JEAN BEDINI

*Meet Your Friends or Your Favorite Theatrical Star*  
ALWAYS AT THE  
**Public Restaurant & Delicatessen Co.**  
17-21 ESSEX STREET, BOSTON JUST REMODELLED  
**Satisfaction 100%** **THANK YOU**

**HARDWARE**  
SANDERS' RADIO DEPARTMENT  
FULL LINE OF RADIO SUPPLIES  
Also Neutrodyne and Acme Reflex Parts  
Agent for Perrine Auto and Radio Batteries  
H. M. SANDERS CO. Tel. Busch 6210 27-29 Stuart St., Boston 11, Mass.

The Lyceum Theatre building was replaced by the Gaiety, Boston's second of that name, a vaudeville theatre. It was designed by Clarence Blackall, who was responsible for more than 20 theatres in Boston. The theatre was later renamed Gayety Theatre after it became a burlesque theatre.



**THEATRE.**  
**WASHINGTON GARDENS.**  
**SUBSCRIBERS' SECOND NIGHT.**  
~~~~~  
**ON WEDNESDAY EVENING, APRIL 18,**  
Will be performed, the Comedy of the  
**POOR GENTLEMAN.**  
FREDERICK, - - - MR. PELBY.  
EMILY WORTHINGTON, - MISS DENNEY.  
~~~~~  
Between the Play and Farce,  
**A HORNPIPE,** - - - By Miss PELBY.  
~~~~~  
To conclude with the Farce of  
**CATHARINE & PETRUCHIO.**  
CATHARINE, - - - MISS DENNEY.  
.....  
☞ The Curtain rises at seven o'clock.  
\*\*Subscription Books are open at the Treasurer's, No 8, State-street—at No. 18, Cornhill—  
at Callender's Library—and at the Gardens.

One of Boston's earliest theatres was built within Washington Gardens, a city pleasure garden located along Common Street (now Tremont Street) across from Boston Common, at West Street.

# VAUXHALL.

## WASHINGTON GARDENS,

*Illuminated with Gas Lights and Variegated Lamps.*

J. H. SCHAFER has the pleasure of announcing to the public, that in addition to the regular Company of Vocal Performers, he has engaged

### MRS. WHEATLEY,

FOR FIVE NIGHTS.

AND

## Mr. McFarland,

FOR A SHORT TIME.

### THIS EVENING,

There will be performed a

## GRAND CONCERT

OF VOCAL AND INSTRUMENTAL MUSIC.

### PART I.

|                 |                                            |                 |
|-----------------|--------------------------------------------|-----------------|
| OVERTURE,       | -                                          | Full Orchestra. |
| PATRIOTIC SONG, | "Arouse! Arouse! Columbia's Sons, arouse!" | Mr. McFarland.  |
|                 | (In character of a naval officer,)         |                 |
| COMIC SONG,     | "Old Bachelors,"                           | Mr. Jones.      |
| SONG,           | "I wish it were once well over,"           | Mrs. W. Clark.  |
| MINUETTO,       | -                                          | Full Orchestra. |
| COMIC SONG,     | "Flitch of Bacon,"                         | Mr. Bray.       |
| SONG,           | "Fly from the world,"                      | Mrs. Wheatley.  |
| IRISH SONG.     | "Sprig of Shalelah and Shamrock so green," | Mr. McFarland.  |

### PART II.

|                 |                                            |                              |
|-----------------|--------------------------------------------|------------------------------|
| OVERTURE,       | -                                          | Full Orchestra.              |
| SONG,           | "They call me Goddess fair,"               | Mrs. Wheatley.               |
| PATRIOTIC SONG, | "Wreaths for the Chieftain," (in character | } Mr. McFarland.             |
|                 | of a military officer,)                    |                              |
| POLACCA,        | "Aid me Venus,"                            | Mrs. Bray.                   |
| RONDO,          | -                                          | Full Orchestra.              |
| COMIC SONG,     | "The Country Club,"                        | Mr. Bray.                    |
| DUETT,          | "Rise Cynthia, rise,"                      | Mrs. Bray and Mrs. W. Clark. |
| IRISH SONG,     | "In Ireland so frisky,"                    | Mr. McFarland.               |

The whole to conclude with a

**HORNPIPE,** - by **MR. JONES.**

DOORS open at 7—to commence at a quarter past 8 o'clock, precisely.

Washington Gardens, established in 1815, was renamed Vauxhall in 1817, after the famous London pleasure garden situated on the south side of the River Thames.

# **A POLLO GARDEN!**

**572, 574, 576**

**WASHINGTON STR'T.**

---

**THE HALL OF MIRTH!**

---

**SUCCESION OF FULL HOUSES!**

**ENTHUSIASM UNBOUNDED!**

---

**EXTRAORDINARY BILL FOR THIS WEEK!**

PRESENTING AN ENDLESS

**SUCCESION OF NOVELTIES!**

---

THE NEW ACT, ENTITLED

**THE ELOCUTIONIST!**

In which Mr. HART will give his inimitable imitation of EDWIN FORREST as

**DAMON!**

---

**PROGRAMME**

— FOR —

**MONDAY, TUESDAY & WEDNESDAY EVE'GS,**

**October 5, 6 and 7, 1863.**

**CHANGE OF PROGRAMME ON THURSDAY.**

---



**PARK SQUARE MUSEUM,**

**NOW OPEN.**

AMONG THE MANY CURIOSITIES, MAY BE SEEN  
**The MANMOTH "JUMBO" HOG "Pride of Maine,"**  
 Weight, 137 1/2 Pounds, 7 ft. 5 in. girth; — He was raised in  
 Auburn, Maine, is 2 years old, and has been pronounced by all  
 that have ever seen him, to be the largest live White Cheshire  
 Hog ever on exhibition.

**THE LARGE LIVE BLACK EAGLE**

"BLACKE JACK LOGAN"

This remarkable Bird was captured near Fort Poplar, on the  
 Kennebec River, Maine, and is the finest specimen of the BLACK  
 EAGLE that was ever seen in captivity.

Many Antiquarian Relics, Curiosities, &c., are always on exhibi-  
 tion in the Curiosity Room.

Entertainments every afternoon and evening by the  
 "COLORED SERENADERS"

consisting of Songs, Jokes, Harp, Guitar and Banjo.

**SIGNOR MURELLO.** — the "MAN WITH THE IRON BELAST" will give an exhibition of Stone Breaking on his breast, every hour during the day.

MUSEUM OPEN FROM 9 A. M. TILL 10 P. M.

**ADMISSION 75 Cts.**

**5 CENTS ONLY.**

*Standard Printing Co., Cor. Wash. & Bennett Sts., Boston.*

Several city gardens arose in Boston, all of which offered variety entertainments, and in some cases full theatrical programs. All of these gardens also offered music, gardens, and a pavilion where beer and other refreshments could be purchased.

Among the city gardens was the Apollo Garden, situated along Washington Street just above Downtown Crossing, and Park Square Garden (1883), located approximately where the Cadet Armory now stands.

**Park Square Garden**  
 AND  
**SUMMER PAVILION THEATRE.**

Located in front of Boston & Providence Passenger Station.

**AUSTIN & STONE**..... **Managers**

**PROGRAMME FOR WEEK ENDING JUNE 14, '84**

Every Evening during the week, and at the Saturday Matinee,

**OLIVETTE**

OPERA COMIQUE. BY AUDRAN. IN THREE ACTS.

**CAST.**

**OLIVETTE**, (Daughter of the Seneschal of Perpignan)..... Miss **ROSE STELLA**  
**BATHILDE**, (Countess of Roussillon)..... Miss **ALICE VINCENT**  
**VELOUTTE**, (Maid to Olivette)..... Miss **FELIE STOWE**  
**MOUSTIQUE**, (Merrimac's Cabin Boy)..... Miss **MAY CAMPBELL**  
**CAPITAINE DE MEHRIMAC**, (of the Corvette "Cormorant") ..Mr. **ED. L. CONNOR**  
**VALENTINE**, (Officer in the Roussillon Guards, his Nephew).....  
 Mr. **WALTER HAMPSHIRE**  
**MARVEJOL**, (Seneschal to the Countess of Roussillon, and Maire of Perpignan).....  
 Mr. **MICHAEL LOE**  
**DUC DES IPS**, (Cousin and Heir Presumptive to the Countess of Roussillon).....  
 Mr. **W. H. FITZGERALD**  
**COQUELICOT** (His Foster Brother and Valet).....  
**SANSTERRE**, } Pages to the Countess }  
**DE JOYEUX**, }  
**FOLLESAMOURS**, }  
**POU-HOU**, }  
**LA BARON DE VERVILLE**, }..... Miss **ANNIE VALE**  
**MILLE DE CERNAY**, }..... Miss **ZINGHEIM**  
**MILLE DE MONTJOIE**, } Maids of Honor }..... Miss **SERVIE**  
**MILLE DE LENOIR**, }..... Miss **HOYT**  
**LECURREUL**, }..... Miss **WHEAT**  
**METIENIS**, } Midsbjimen on board the "Cormorant" }..... Miss **STANLEY**  
**LARTIMON**, }..... Miss **BONNE**  
**BOUSSOLE**, } Sailors }  
**LOUP-DE-MUR**, }  
**CAYOU**, }  
**RICHETTE**, } Maids of Mainbrace Tavern }..... Miss **LEWIS**  
**REUBETTE**, }..... Miss **LINTON**  
**PUMPERNICKEL** (a German Sailor)..... Miss **LEIGH**  
 Mr. **SAWD-OF**

**SYNOPSIS OF SCENERY.**

**ACT I**—The Seneschal's House at Perpignan, Shore of the Mediterranean.

**ACT II**—Hall Room of the Palace of Roussillon.

**ACT III**—Interior of the Mainbrace Tavern. The "Cormorant" at Anchor.

The action in the opera passes at Perpignan, in the centre of Roussillon, on the shore of the Mediterranean, under Louis XIV.

**MR. HARRY SAXTON, Musical Director**

EVERY AFTERNOON AT 2.30, EXCEPT SATURDAY

**Mr. C. E. VERNER,**

Supported by an excellent Company, in the delightful Irish Comedy, entitled

**FELIX O'CALLAHAN**

SUNDAY EVENING, JUNE 15,

**MR. SAM LUCAS'**

**Great Operatic Concert Co.**

In choice selections of Sacred Songs and Jubilees. Mr. Lucas' name is a sufficient guarantee to the Boston public of the efficiency and excellence of the entertainment.

Monday, June 16th, every Afternoon and Evening, during the Week.

**W. M. DE VENE'S**

**ALLIED ATTRACTIONS,**

Embracing 30 Star Artists in refined Specialties. The strongest Combination traveling.

**EVENING PRICES**.....10, 15, 25 and 50 Cents

**AFTERNOON, General Admission, 10 cts. Reserved Seats, 10 cts. extra**

**TAKE THE FAVORITE FALL RIVER LINE FOR NEW YORK.**

J. E. Farwell & Co., Printers, 45 Pearl Street.

# OAKLAND GARDEN GROVE HALL



## OAKLAND GARDEN.

ISAAC B. RICH.....PROPRIETOR AND MANAGER

### SPECIAL INVITATION.

C. H. SMITH'S DOUBLE MAMMOTH  
UNCLE TOM'S CABIN.

2 TOPSYS, 2 MARKS, 2 DONKEYS, 14 BLOODHOUNDS. GREAT COMPANY.

*Admit Lady and Gentleman, Wednesday Eve., Sept. 6th.*

*This Ticket is not good for Gentleman unaccompanied with Ladies, and is only good for the above date. No boys or children admitted on this ticket.*

# OAKLAND GARDEN

Columbia St. and Blue Hill Ave.  
NEAR GROVE HALL.

A. H. CLAPP.....PROPRIETOR  
CHAS. H. HICKS.....MANAGER

THE LAST GREAT NOVELTY.

## PROGRAMME

WEEK COMMENCING

MONDAY, AUG. 11th,

# H. M. S. PINAFORE

ON BOARD SHIP.

The action takes place on board ship, in real water, with the following

### CAST OF CHARACTERS:

The Rt. Hon. Sir Joseph Porter, K. C. B., first Lord of the Admiralty.....Mr. Wm. Forrester  
Late of Rice Opera Bouffe Co.

Capt. Corcoran, commanding H. M. S. Pinafore.....Mr. Percy J. J. Cooper  
of Saville & Lee English Opera Co.

Ralph Rackstraw, Able Seaman,  
Mr. Louis P. Pfan  
Of the Boston Museum Co.

Dick Deadeye, Able Seaman.....Mr. Jas. A. Gilbert  
Boston Pinafore Co.

Bill Bobstay, Bosswain.....Mr. Harry Haskell  
Boston Pinafore Co.

Bob Becket, Carpenter's Mate.....Mr. Chas. Winter  
Of the Boston Theatre Co.

Tom Bowlin.....Mr. Wm. W. Tuttle  
Tom Tucker, Midshipmite.....Little Willie  
Josephine, the Captain's Daughter,  
Miss Geraldine Ulmar  
The Fascinating Soprano.

Little Buttercup, a Portsmouth Bumboat Woman.....Miss Anna Guenther  
Of the Boston Pinafore Co.

Hebe, Sir Joseph's First Cousin,  
Miss Carrie Burton  
Of Saville & Lee Pinafore Co.

First Lord's Sisters, his Cousins, and his Aunts,  
Ladies of the Chorus  
Sailors, etc., by Full Chorus.

Between the First and Second Acts,  
Mr. A. R. CARRINGTON

Will introduce his famous DRUM SOLO. Also at the conclusion of Pinafore his remarkable Solo, entitled "POINTS OF WAR."

## PROGRAMME CONTINUED.

A FULL AND COMPLETE

# ORCHESTRA and CHORUS

Under the Direction of S. L. STUDLEY.

JAS. A. GILBERT..... STAGE MANAGER

SCENIC EFFECTS by..... MR. P. H. HILL

Forming an immense Company of

## UPWARDS of FIFTY PEOPLE

With full Chorus, and the

# Medford Band Orchestra

The approach of Sir Joseph Porter, his cousins and his aunts in his barge, manned by trusty oarsmen, will be signalized by a salute, etc., etc.

## RESERVED SEATS

Can be Secured in Advance.

For sale at O. Ditson's, Washington St.; also at Highland Railway Office, Dudley St., and at the Cafe on the Grounds.

# BAND CONCERTS

WEDNESDAY

And SATURDAY

## AFTERNOONS.

Round Trip Tickets, - - 25 Cents

Via Highland Railway.

Secured Seats ..... 25 Cents Extra

Performance will commence at 8.30, sharp.

About 1879, several summer gardens opened near City Point in South Boston, all accessible from central Boston by newly-developed horse-drawn railroad lines. The railroad companies promoted these theatres, and offered combination railroad fares and admission tickets. Each of these gardens had a theatre, and the stock-in-trade of these summer theatres was Gilbert and Sullivan opera, variety shows, minstrel shows, and Sunday "sacred concerts."

The WM. BOURNE & SON PIANO Pronounced by the Musical World as The Best. 666 Washington Street, Boston.

**OCEAN GARDEN**  
**PROGRAMME**  
 CITY POINT.  
 Vol. 1. BOSTON, MASS., JULY, 1880. No. 8.

OCEAN GARDEN PROGRAMME.  
 PROGRAMME CONTINUED.

The Only, the Peerless  
**Chas. H. Yale & Wm. H. Chase**  
 In their Laughable Specialty,  
**CLAMARIO**  
 The Boston Favorites, the Original Camp Meeting Shouters,  
**OLYMPIA QUARTETTE!**  
 KEOUGH, SULLIVAN, MACK and O'HARA.  
 Here they come! Now we have them!  
**H. L. J. G.**  
**WILLIAMS, SULLY,**  
**PELL and LEWIS,**  
 In their unapproachable Songs, Dances, Glove Fights, Wrestling Matches, etc., etc.

**OVERTURE.**  
 The above terminating with the Laughable Burlesque entitled,  
**PIRATES FOR TEN CENTS**

|                       |                |
|-----------------------|----------------|
| LITTLE WILLIE         | BILLY WILLIAMS |
| JERKES SMART          | W. J. SULLY    |
| LITTLE TOMMY          | CHAS. H. YALE  |
| JIMMY RHODY           | WM. H. CHASE   |
| THE TAUNTON PERLER    | J. PELL        |
| THE EIGHTH ST. BUISSE | T. LEWIS       |
| DENNY O. BRIONE       | D. RIPLEY      |
| ARTH. JANEY           | G. REEDE       |
| OLD GROWLER           | J. KEOUGH      |
| HASE JOHNNY           | T. SULLIVAN    |
| TIMMY THE JAY         | O. MACK        |
| OBADIAH JENKS         | R. O'HARA      |

Pirates, Officers, Firemen, etc., by the entire Company.

**GOOD NIGHT**

DON'T FORGET OUR POPULAR  
**GRAND SACRED CONCERTS**  
 Every Sunday Afternoon and Evening.

SUTTON and GRAHAME ..... Proprietors.  
 W. H. CHESTER ..... Director of Amusements.  
 J. J. SLOCUM ..... Supt. of Grounds.  
 PROF. T. E. JEFFERY ..... Musical Director.



# FOREST GARDEN

**GRAND OPENING**  
**Saturday, May 29th**

AT 8 O'CLOCK P. M.

**And Every Night at 8 o'clock.**

**The Most Beautiful Summer Garden in America**

—AND THE—

**Greatest Show in the World**  
**ALL FOR 15 CENTS,**

By purchasing a Round Trip Ticket on the Metropolitan Horse Car.

MAKE A NOTE OF THE

**7-GREAT SHOWS-7**  
FOR ONE PRICE OF ADMISSION.

**4-BANDS OF MUSIC-4**

The Celebrated European Sensation.

**ORRIN BROTHERS'**



## SPANISH CIRCUS

All the Brilliant Stars of the Arena performing nightly at 7 o'clock, in the mammoth tent in the Pavilion Theatre.

Every Night at 7.45 o'clock.

**FINNILLI'S**

**ROYAL MARIONETTES**

"LIVING BLOCKS."

Performing Feats Unparalleled by Man.

At 8.15 o'clock, in the magnificent New Theatre, the

**HUB OPERA COMPANY**

(LATE IDEALS)

Will render Gilbert & Sullivan's greatest Comic Opera entitled  
**THE BORGHER.**

Between the acts will be presented a Beautiful Series of  
**Dissolving Stereoptic Views**

Every Night at 8 o'clock, will occur a

**BRILLIANT ILLUMINATION OF THE ENTIRE GARDEN**

With myriads of Colours, Beacons and Electric Lights.

Each evening's entertainment to conclude with the most

**Gorgeous Display of Fireworks**

Ever presented to a Boston Public.

**REMEMBER!**

**Seven Great Shows**

**For One Price of Admission.**

Boston Job Print, Alden Street.



# FOREST GARDEN

## PROGRAMME.

No. 1.

THURSDAY, JUNE 12TH, 1879.

### FOREST GARDEN,

CORNER OF WASHINGTON AND FOREST HILL STREETS.

IS

## NOW OPEN

### DAY AND EVENING

UNDER THE MANAGEMENT OF

L. C. DURKEE AND J. M. RUSSELL.

The most superb Resort in New England, abounds in  
Natural Scenery and Embellishments by Art with many

**NEW and ATTRACTIVE FEATURES.**

Dancing in the Pavilion Day and Evening.

MUSIC EACH DAY AND EVENING BY THE

### FOREST GARDEN BAND

D. W. BOARDMAN, Leader.

The Entire Tract of Twenty Acres are Beautifully Illuminated  
by ELECTRIC LIGHT.

### Magnificent Fireworks

Designed Expressly for the Grounds.

**General Admission - - - - - 20 Cents.**

Children under Twelve, accompanied by their proper guardians,  
admitted Free of Charge.

Carriages for evening take Walnut Avenue Entrance Side.

### Programme at Forest Garden.

AFTERSOON CONCERT FROM 3 TILL 4.

OVERTURE - "Stradella," - Floten.  
MARCH - "Arcona," - Zikoff.  
- - - Bolero from "Attila," Verdi.  
SOLO FOR CORNET "La Tremolo," Balfé.  
D. W. Boardman.  
SELECTION - From "Pinafore," - - -

CONCERT FROM 5 TILL 6.

MARCH - "Soldier's Songs," - - -  
- - - "Operatic Potpourri," - - -  
CORNET SOLO - - - D. W. Boardman.  
- - - a "Soldier's Farewell," - - -  
- - - b "Hurrah Galop," - - -  
- - - "National Potpourri," - - -

Dancing in Pavilion from Eight till Ten.

### Great Attraction

FOR

SATURDAY.

### STUBERT BROTHERS

### Florists.

3070 WASHINGTON ST., BOSTON.

FLORAL DECORATIONS AND DESIGNS OF  
EVERY DESCRIPTION FURNISHED ON  
SHORT NOTICE.

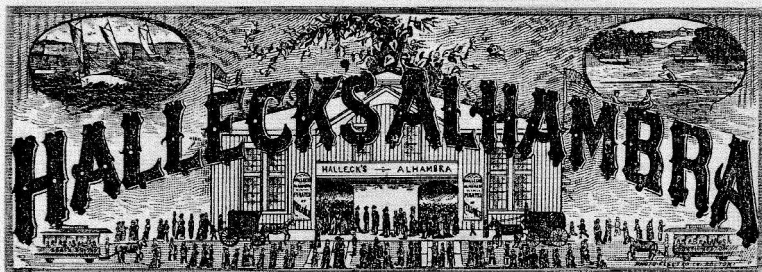
Prompt attention given to orders by mail  
or telegraph. Egleston Square cars stop  
at our Greenhouses, which are open every  
day in the year from 7 A. M. to 10 P. M.

Flowers for Sale at the Gardens.

F. A. HOWARD, Manager.

**MANUFACTURERS**  
Wholesale & Retail Dealers of  
**MENS', YOUTHS', BOYS' AND CHILDRENS' CLOTHING,**  
**Moulton & Bradley,**  
484 and 486 WASHINGTON STREET, BOSTON.

Forest Garden, near Franklin Park, was by a narrow margin the first of the summer gardens that were established on the outskirts of Boston. The gardens each offered, in a natural setting, a theatre, refreshment pavilions, outdoor band concerts, dancing, usually boating and swimming, and other attractions such as firework displays.



# ALHAMBRA

## PROGRAMME FOR OUR GRAND OPENING

ANDY J. LEAVITT.....MANAGER  
T. H. PLUMER.....DIRECTOR

### PROGRAMME FOR THIS EVENING.

Previous to the rise of the curtain a Grand Overture will be performed by the Alhambra Orchestra, conducted by Mr. THOMAS F. MARTIN.

The performance will commence with our own popular

## PARLOR MINSTREL SCENE

BONES, INTERLOCUTOR, TAMBO,  
CHAS. F. ATKINSON, T. H. PLUMER JOHN LA TOUR  
Overture.....Orchestra  
Life's Golden Mouth.....Miss Adelaide Jefferys  
Ball Toss.....Chas. H. Atkinson  
Kiss Me to Sleep.....Miss Kate Riddell  
Ella Jane.....John La Tour  
Grand Finale.....Company

### OUR GRAND OLIO.

The Greatest of all Irish Teams.

## POWERS AND SULLIVAN

As Mrs. SHAGSNEY and Mrs. MCCARTHY in MARKET  
Gossip, and

### THE O'GLANDY GUARDS.

THE REAL, THE INIMITABLE.

## ANDY J. LEAVITT,

WITH HIS BAND.

The youngest Clog and Song and Dance Team now before  
the public.

## BOBBY DALY BROTHERS DAN

In their beautiful Double Clog.

## GEORGE—FRANCOIS BROTHERS—NELSON

In their Parlor Gymnastics.

The charming Vocalist,

## MISS KATE RIDDELL

In choice Serio-Comic Gems.

Frank Davis' own version of

## A CELEBRATED PLACE

MR. FITZGERD.....ANDY LEAVITT  
JOHN BREAKALL.....FRANK DAVIS

## CHAS. H. ATKINSON AND JOHN LA TOUR.

In their laughable act of

## P. S. GILMORE'S JUBILEE CONCERT

PAGANINI.....JOHN LA TOUR  
P. S. GILMORE.....CHAS. H. ATKINSON

## GEORGE—FRANCOIS BROTHERS—NELSON

In their very funny Clown Act.

### OVERTURE.....ORCHESTRA

The performance will conclude with JOE BUCKLEY'S own  
and original version, the

## CRUSHED TRAGEDIAN

CRUSHED TRAGEDIAN.....MR. JOE BUCKLEY  
HEAVY MAN.....MR. ANDY LEAVITT  
MANAGER.....MR. T. H. PLUMER  
PAREPFA ROSA.....MISS KATE RIDDELL

.....

.....

.....

.....

.....

.....

.....

.....

.....

.....

.....

.....

.....

.....

.....

.....

.....

.....

.....

### LOOK AT OUR LIST OF PRICES.

Admission.....10 Cents | Reserved Seats....20 Cents

Children, accompanied by their parents, admitted to  
reduced seats free, Mothers only.

Boxes open at 7.....Curtain rises at 8 precisely

.....

.....

.....

.....

.....

.....

.....

.....

.....

.....

.....

.....

### Look Out For Great Attractions Next Week.

BOSTON JOB PRINT, ALDEN STREET.

THE  
**GRAND AQUARIA!**

IS NOW OPEN FOR PUBLIC EXHIBITION!

AT THE

**AQUARIAL GARDENS,**  
NO. 21 BROMFIELD STREET.

This is the title of the latest novelty in the world of popular science. It makes an extraordinary addition to the circle of fascinating, yet innocent and exceedingly instructive amusements. The aquarium, termed "Aquaria" in the plural, is a fish globe on a comprehensive scale, and one in which

**The Water is never Changed.**

The Aquaria consists of fresh and salt water crystal ponds, varying in capacity from twenty to one hundred gallons. These ponds are enclosed in plate glass. They are perfectly translucent, and, being artificially furnished with rocks, sand, &c., with varieties of sea-weed, afford a vivid representation of the bottom of the sea. Here, therefore, we can have, in their natural element and conditions, every variety of

**LIVING MARINE AND FRESH WATER FISH,  
MOLLUSCS, ZOOPHYTES, AND PLANTS.**

The scene is at once wonderful and intensely beautiful. Hours of delight may be spent in watching the habits of the animals seizing and devouring their prey, and disporting themselves as freely as if they were still enjoying their full freedom in the ocean or river where they first saw life.

No pen can describe the beauty of the brilliant Zoophytes, which embody nearly every color and shade known to us. Many of these sea-animals have every appearance of belonging to the vegetable kingdom; and we are thrilled with an indescribable sensation as we behold these apparent plants and flowers extend their stems or leaves, and seize such prey as comes within their grasp, and yet, (unlike the representation of life produced by the brush of the master, representing at all times but the one idea that conceived it.) The mimic Rock-pool, or Coast-Scene is ever changing, as the animals expand or close, or the floating objects move or settle as their nature prompts. These living pictures never cease to interest and instruct. Who can say the same of the most finished master-piece of art?

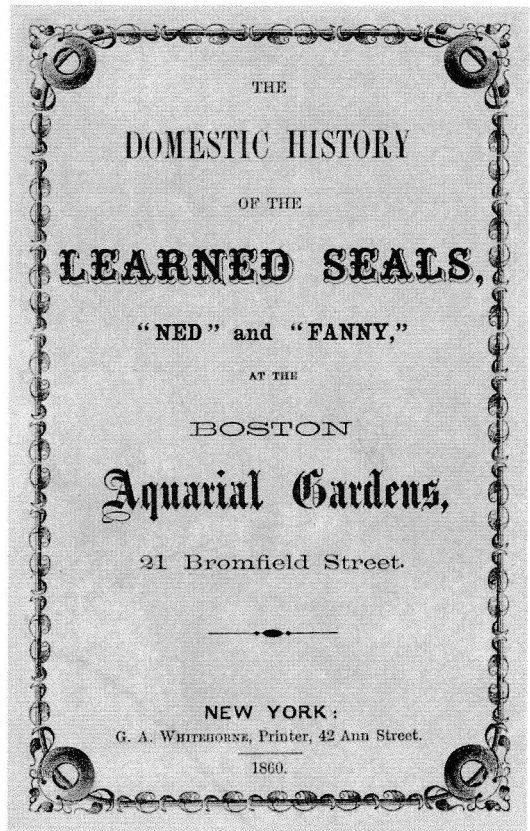
**CUTTING & BUTLER, Proprietors.**

Admission, 25 Cts. Children under 10 years, 15 Cts.

OPEN FROM 9 A. M., TO 10 P. M.

1859

The Aquarial Gardens was first established in 1860 on Bromfield Street, near Washington Street, not far from the Boston Music Hall. Shortly afterward it moved to Central Court, on the site that was later occupied by the Jordan Marsh department store (below), when it was renamed the Boston Aquarial and Zoological Garden. A theatre was installed, first for aquarial-themed performances, but later for a conventional fare of comedies, farces, and variety acts. For a time it was run by P. T. Barnum, who introduced displays of human oddities and more elaborate stage performances. By about 1866, theatrical performances took precedence over the aquarium, and eventually gave rise to the Adelphi and the Theatre Comique, where some noted performers appeared in legitimate plays and ballet.



# CATALOGUE.

The common names are in Capital letters, the scientific in Italic. Following the scientific name, is the abbreviated name of the author from whom it is taken.

THE ANIMALS ARE FED DAILY, AT 11 O'CLOCK, A. M.

## AQUARIAL DEPARTMENT.

**Tauk No. 1.** PICKEREL,  
*Esox reticulatus*—Lesuer.

**No. 2.**  
FRESH WATER CLAM, *Anodonta implicata*.

**No. 3.**  
BROOK TROUT, *Salmo fontinalis*—Mitchell.

**No. 4.**  
EUROPEAN CARP, *Cyprinus carpio*—Linn.  
FROM Messina, Sicily.

**No. 5.** HORNED POUT OR CATFISH.  
*Pimelodus atrarius*.  
POND FISH, OR BREAM, *Pomotis vulgaris*.  
BROOK TROUT, *Salmo fontinalis*.  
GOLD FISH, *Cyprinus auratus*.

**No. 6.** FRESH WATER CLAM,  
*Anodonta implicata*—Say.  
TRITON, OR WATER NEWT,  
*Notophthalmus viridescens*—Baird,

**No. 7.**  
EUROPEAN CARP, *Cyprinus carpio*—Linn.  
SHINER, *Leuciscus americanus*—Storer.  
RED FIN, *Leuciscus cornutus*.  
CHUB, *Leuciscus pulchellus*.

**No. 8.**  
FRESH WATER CLAM,  
*Anodonta implicata*—Say.  
SUN FISH, OR BREAM,  
*Pomotis vulgaris*—Cuvier.  
STRIPED BREAM, *Bryttus obovatus*—Putnam.  
PERCH, *Perca, flavescens*—Cuvier.

**No. 9.**

**No. 10.** SILVER SIDE, OR SPEARING.  
*Atherina notata*—Mitchell.

**No. 11.**

**No. 12.**

**No. 13.** BARRED MINNOW  
*Hydrargyra flavula*—Storer.  
COMMON MINNOW,  
*Fundulus visculentus*—Cuv. et Val.

**No. 14.**

**No. 15.**

**No. 16.** SEA ANEMONE,  
*Actinia marginata*—Lesuer.

**No. 17.**  
SEA SNAIL, *Nassa obsoleta*—Say.  
OYSTER, *Ostrea borealis*—Lam.

**No. 18.**

**No. 19.** SMELT, *Osmerus viridescens*.

**No. 20.** SILVER SIDE, OR SPEARING,  
*Atherina notata*.

**No. 21.** SPOTTED TURBOT,  
*Pleuronectes maculatus*—Mitchell.

**No. 22.**

**No. 23.**

**No. 24.**

**No. 25.** RED-MOUTH, from Florida.  
*Hemulon chrysopteron*—Cuv. et Val.

**No. 26.** SOULPIN, *Cottus virginianus*.

**No. 27.**

**No. 28.**

**No. 29.** COMMON CRAB,  
*Cancer irroratus*—Stm.

**No. 30.** HORSE SHOE OF KING CRAB.  
*Polyphemus americanus*.  
OYSTER, *Ostrea borealis*—Lam.

**No. 31.**  
TAUTOG OF Black Fish,  
*Tautoga americana*—De Kay.

**No. 32.**



**CHRISTMAS WEEK**  
AT THE  
**Aquarial & Zoological Gardens**

**WONDER FEAT OF THE WORLD!**  
**THE DAYS OF FABLE TRANSCENDED!**



**A WHALE IN HARNESS!**

The Proprietor of the Aquarial Garden announces that he has introduced  
**The Most Astounding Feat on Record!**

Being nothing less than the  
**THE DRIVING IN HARNESS OF A LIVING WHALE!**

And he respectfully submits that the annals of history furnish no parallel to this remarkable exhibition.

**On Monday Evening, Dec. 23, and every Evening during the week,**  
Will be presented the Aquatic Pageant and Marine Novelty.

**THE CAR OF VENUS!**

Realizing in brilliancy of execution the old Florentine picture, and recalling the words of the poet:

*"The shell she called in was a Nautilus,  
And like a graceful girl it seemed to love  
Its own reflection, on the hoary sweep,  
And sang unto the music of the waves.*

*Which sang to her again. Old Ocean  
Scattered pearls from his briny hair,  
Lighting her fenny pathway."*

The Stage will represent the  
**GROTTO OF THE CYTHEREAN QUEEN**

And its ensemble will be unrivalled for gorgeousness of effect.

**PERSONS REPRESENTED:**  
**VENUS, Goddess of Love and Beauty,** . . . . . **MISS EMMA LEONE,**  
**NEPTUNE, Chief of the Sea Deities,** . . . . . **MR. D. W. FOSB**

The action of the Mythological Divertissement delineates the appearance of Cythera in her Grotto, whence she is conducted by Old Neptune to her Nautilus barge. To it

**THE LIVING WHALE IS HARNESSSED,**  
AND THE  
**Queen of Beauty fearlessly and gracefully drives the Monster**  
**through his native element.**

For the accommodation of Families and Children the management announce the  
**Aquatic Pageant, Wednesday & Saturday Afternoons, at 3 o'clock.**

In the Lower Hall the several performances of the trained animals will take place at  
11 A. M., 3 1-2 and 8 P. M., conducted by Dr. U. W. Sears.

**Admission, 25 cents; Children under ten years, 15 cents.**  
**J. A. CUTTING, PROPRIETOR.** | **W. H. BROOKINGS, TREASURER.**



# THEATRE COMIQUE.

J. WENTWORTH ..... LESSEE AND MANAGER  
JAS. S. MAFFITT ..... STAGE MANAGER

## Grand Re-Opening

OF THIS POPULAR THEATRE, FOR THE

## FOURTH REGULAR SEASON

ON

Monday Evening, October 12

WITH A LARGE AND TALENTED COMPANY, and  
the PRINCIPAL DANCERS of the

## GRAND PARISIAN BALLET

Of Messrs. Jarrett & Palmer, now dancing at Niblo's  
Garden, New York.

First appearance in this city of the **FEBRELESS**

# BONFANTI

The great Favorite, M'lle

# BETTY REGL

EUGENIA OBERTI,  
LIZZIE KELSEY,  
SALLIE MADDOX,

And a full CORPS DE BALLET, under the direction of

SIG. CONSTANTINE,

Presenting the most beautiful and famous Ballots of the

# WATER LILY



**THE OLD  
PUBLIC LIBRARY  
TRUST,**

**International Trust Company, Trustee.**

**Capital Stock \$300,000,**

**IN SHARES OF \$10,**

Offers Every Resident of New England an Opportunity to  
Assist in the Retention of One of

**BOSTON'S EDUCATIONAL LANDMARKS**

To Add to the Attractions of the City What Nearly Every  
Other Leading City in This Country and  
Europe Possesses—a Permanent

**ZOOLOGICAL EXHIBITION,**

And at the Same Time Participate in a Splendidly

**REMUNERATIVE 7% INVESTMENT.**

The OLD PUBLIC LIBRARY TRUST has been created

When the present Boston Public Library building was constructed at Copley Square, the collections were removed from the old library building, on Boylston Street near Tremont Street. In the empty building a zoo was installed in 1897, and in the old library's auditorium, Bates Hall, was installed a theatre named The Zoo. Here comic opera was presented twice a day by the



... THE ...

# Zoo Bulletin.

PROGRAM OF ATTRACTIONS.

WEEK COMMENCING MARCH 14, 1898.

### THIS WEEK.

## ZOO AUDITORIUM

Performances continuous from 12 o'clock noon to 11 P. M. High class vaudeville entertainments before and between the opera performances.

At 2.30 and 8.15

## THE HARVARD OPERA COMIQUE CO.

IN

H. M. S.

# PINAFORE

Gilbert & Sullivan's Comic Opera in 2 Acts.

### LOWER HALLS.

Celebrated "MORNING" in the Illusion, Satin Parlor.

### GYPSY CAMP.

Where Ladies' Fortunes are Told Free.

### BOHEMIAN GLASS BLOWERS,

### NEXT WEEK.

Eighth Week of the ...

SEASON OF

## COMIC OPERA

The HARVARD Opera Comique Co.

IN

# BOCCACCIO

also Six Hours of High Class Vaudeville.

### SIXTH WEEK

Of the Parisian Sensation ...

The Famous \$10,000 Dazzling White

# Satin · Parlor

WITH ITS BEAUTIFUL OPERATIC ILLUSION.

Most Mystifying Performance Ever Witnessed.

THE GRANDEUR OF THE SATIN PARLOR IS A SIGHT NEVER TO BE FORGOTTEN.

SPECIAL ENGAGEMENT FOR NEXT WEEK.

# RICHARD HARLOW,

Queen Isabella of "1492."

COMING — CLARA MORRIS.



**THE SANS SOUCI**  
BOSTON

Week Commencing August 8, 1898.

**After the Show** GO TO  
**HIGGINS' CHOP HOUSE,**  
128 and 130 Court St. Carriage entrance 35 Howard St.

Specialties: Baked Live Lobster in Shell, Rarebits, Salads, etc.  
**FIRST FLOOR**—Gentlemen's Cafe and Restaurant.  
**SECOND FLOOR**—Oriental Rooms and Dining Booths for Ladies and Gentlemen.  
 A Choice Program of Music from 8.30 to 11 P.M. by L'Orange's Orchestra.  
**THIRD FLOOR**—Especially equipped for small Dining Parties.  
**FOURTH FLOOR**—Private Dining Rooms.

**THE MINIATURE ARC LAMPS**  
OVER THE TABLES AND IN THE BALCONIES

Represents the Latest Departure in Electric Lighting

They are especially adapted for use in Cafes, Halls, China, Glass and Jewelry Stores.

LOW FIRST COST. . . . .VERY CHEAP TO OPERATE.

Made by GENERAL ELECTRIC CO., 180 Summer Street.  
 Installed by EDISON ELECTRIC ILLUMINATING CO., 3 Head Place.

The SANS SOUCI programme offers an exceptional opportunity to advertisers. Rates on application to

**E. C. WATERS,**  
Care of Box Office or 611 WASHINGTON ST., BOSTON.

**cagansett**

**Lager...**

PROVIDENCE, R. I.

**OLD'S FAVORITE LAGER**  
D AT THIS PLACE.

Honest Beer Brewed in the Country.

In 1898, The Zoo was refashioned into a hall for "polite vaudeville," with tables at the seats for refreshments, and a band that provided, between vaudeville programs, Promenade Concerts, and accompanied dancing. The new theatre was called Sans Souci. The library building was demolished in 1899 to make way for the new Colonial Theatre.

**PROGRAM.**

Music each Evening from 7.30 to 8, and during the intermission, in the **PALM ROOM** (Rear Balcony), by the **IMPERIAL ORCHESTRA QUARTETTE.**

**PART I.**

**Polite Vaudeville and Promenade Concerts.**

Evenings at 8. Matinees at 2.

Orchestra under the Direction of Mr. **LOUIE BAER.**

1. **MARCH**—"Gayest Manhattan" . . . . . Bratton  
 2. **OVERTURE**—"Jolly Bobbers" . . . . . Suppe  
 3. **MURRAY AND ALDEN,**  
 Travesty Artists, in "A Personal Affair," by James Thornton.  
 4. **BALDWIN AND DALY,**  
 The Happy Hot Stubs, in their remarkable acrobatic feats.

*Program Continued on following page.*

Copy of Laws governing public places of amusement in the City of Boston.  
 Section 16.—No shall any person be allowed to wear a covering for the head so as to obstruct the view of any person in any such place.

Attest: **J. M. GALVIN.**

**Anheuser-Busch Brewing Ass'n.**  
**THE LEADING BREWERY IN THE WORLD!**  
**Brewers of the most Wholesome and Popular Beers.**

Carried on nearly every Man-of-War and Cruiser. Served at most of the United States Army Posts and Soldiers' Homes.

Served on all Pullman Dining and Buffet Cars. Served on all Wagner Dining and Buffet Cars. Served on all Ocean and Lake Steamers. Served in all First-Class Hotels. Served in the Best Families. Served in all Fine Clubs.

**.....SERVED AT THE SANS SOUCI!.....**

# TAVERN CLUB



## *The Coming of Age of the Bear*

Meum est propositum in Taberna mori  
Et vinum appositum Sienti ori  
Ut dicant cum venerint Angelorum chori,  
Deus sit propitius isti potatori.

FRIDAY, DECEMBER 1, 1905


When the old library building was demolished, homes had to be found for the animals in the zoo. A baby bear was adopted by the Tavern Club, which was and remains a private theatrical club located on Boylston Place, along the side of the library building. Not long afterward the bear outgrew its new home and had to be given to a zoo, but the Tavern Club retained the bear as its mascot or emblem. Inside the entrance archway to Boylston Place there is a sculpture of a bear in formal dress that alludes to the Tavern Club's bear.

Doors open at 7 o'clock, & the Exhibition begins at half past 7, & lasts about an hour and an half, during which time there is no tedious interval to spread out the entertainment, as every piece is brought on in close succession after the other.

"Doors open at 7 o'clock, & the Exhib[i]tion begins at half past 7, & lasts about an hour and an half, during which time there is no tedious interval to spread out the entertainment, as every piece is brought on in close succession after the other."

— Program for Burnell's Museum

---

 Particular care will be taken that nothing shall occur to offend the most fastidious.

---

"Particular care will be taken that nothing shall occur to offend the most fastidious."

— Program for Miss Julia, the Snake Charmer

The Manager requests that there be no beating of time with the feet, as it is unpleasant to the audience, and interrupts the Performers.  
Owing to the length of the Programme the audience will please excuse the repetition of Pieces. It is hoped the following will be acceptable to the patrons of Ordway Hall.  
Gentlemen are requested to take off their hats during performance hours.

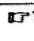
"The Manager requests that there be no beating of time with the feet, as it is unpleasant to the audience, and interrupts the Performers.

"Owing to the length of the Programme the audience will please excuse the repetition of Pieces. It is hoped the following will be acceptable to the patrons of Ordway Hall.

"Gentlemen are requested to take off their hats during performance hours."

— Program for Ordway's Minstrels, Ordway Hall (Old Province House)

---

 The above Entertainments being of a perfectly harmless and irreproachable character, are well calculated to attract the attention and support of those families who, from principle, religious or otherwise, abstain from the Amusements of the Theatre, &c.

---

"The above Entertainments being of a perfectly harmless and irreproachable character, are well calculated to attract the attention and support of those families, who, from principle, religious or otherwise, abstain from the Amusements of the Theatre, &c."

— Program for the Boston Museum

Copyright © 2006 by Fredric Woodbridge Wilson  
All rights reserved  
Revised October 22, 2006