



Dual DNA and Protein Tagging of Open Chromatin Unveils Dynamics of Epigenomic Landscapes in Leukemia

Citation

Lee, Jonathan D, Joao A Paulo, Ryan R Posey, Vera Mugoni, Nikki R Kong, Giulia Cheloni, Yu-Ru Lee, et al. 2021. "Dual DNA and Protein Tagging of Open Chromatin Unveils Dynamics of Epigenomic Landscapes in Leukemia." *Nature Methods* 18 (3): 293–302.

Published Version

<https://doi.org/10.1038/s41592-021-01077-8>

Permanent link

<https://nrs.harvard.edu/URN-3:HUL.INSTREPOS:37373075>

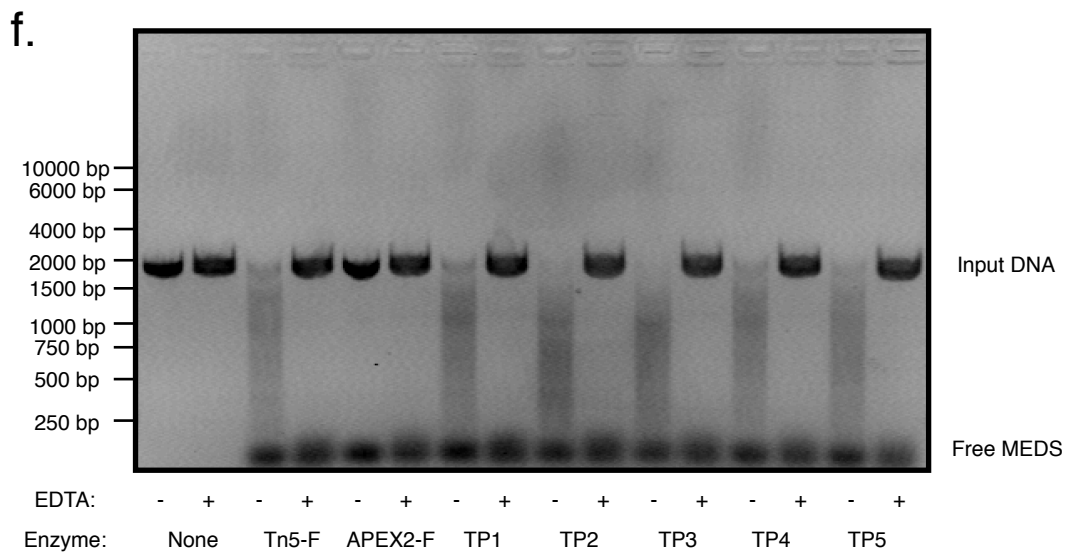
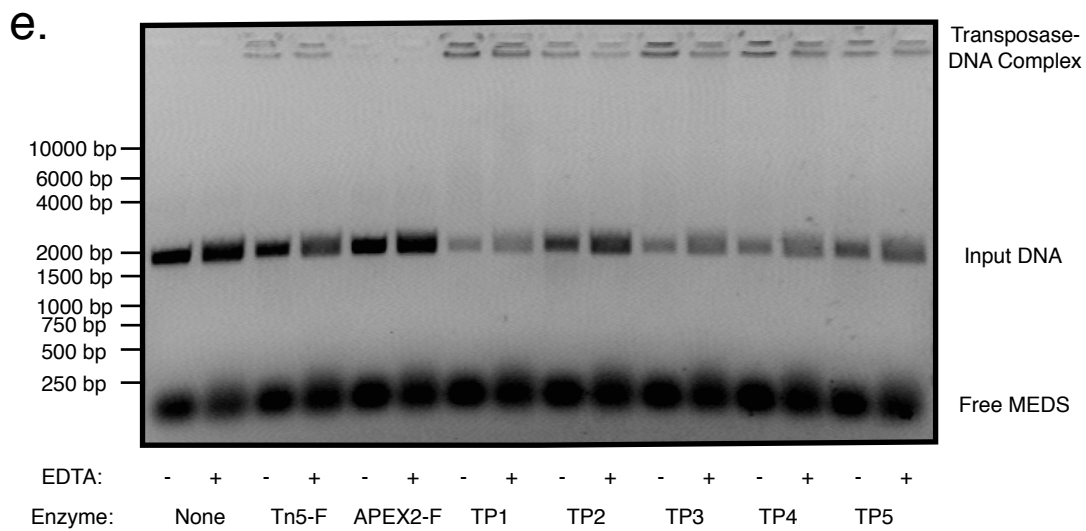
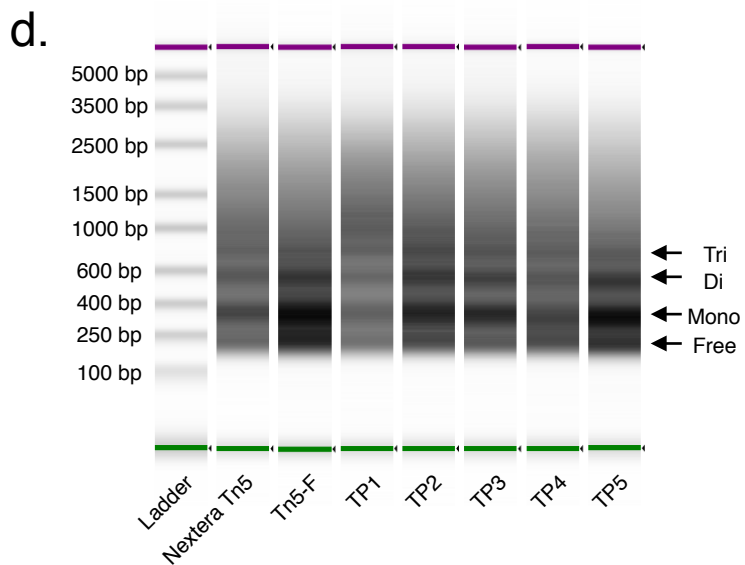
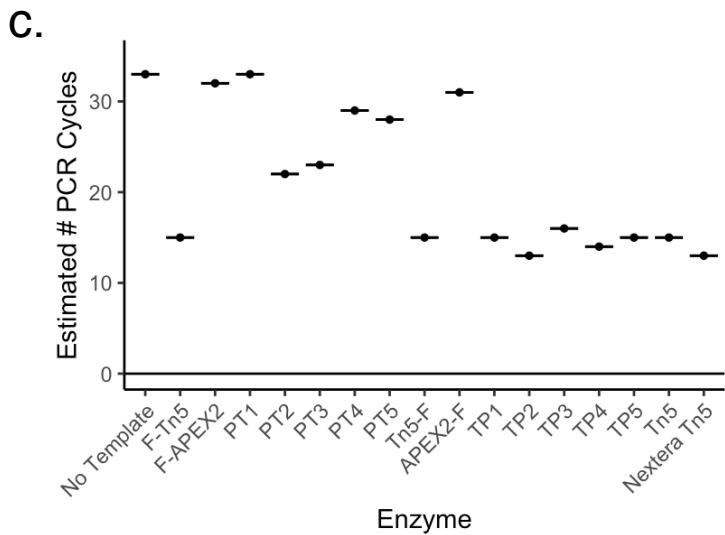
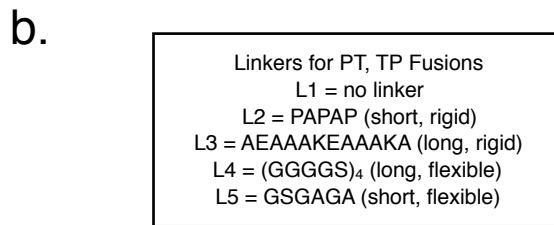
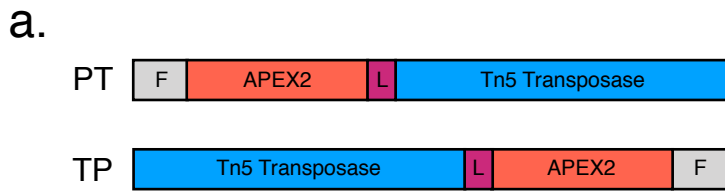
Terms of Use

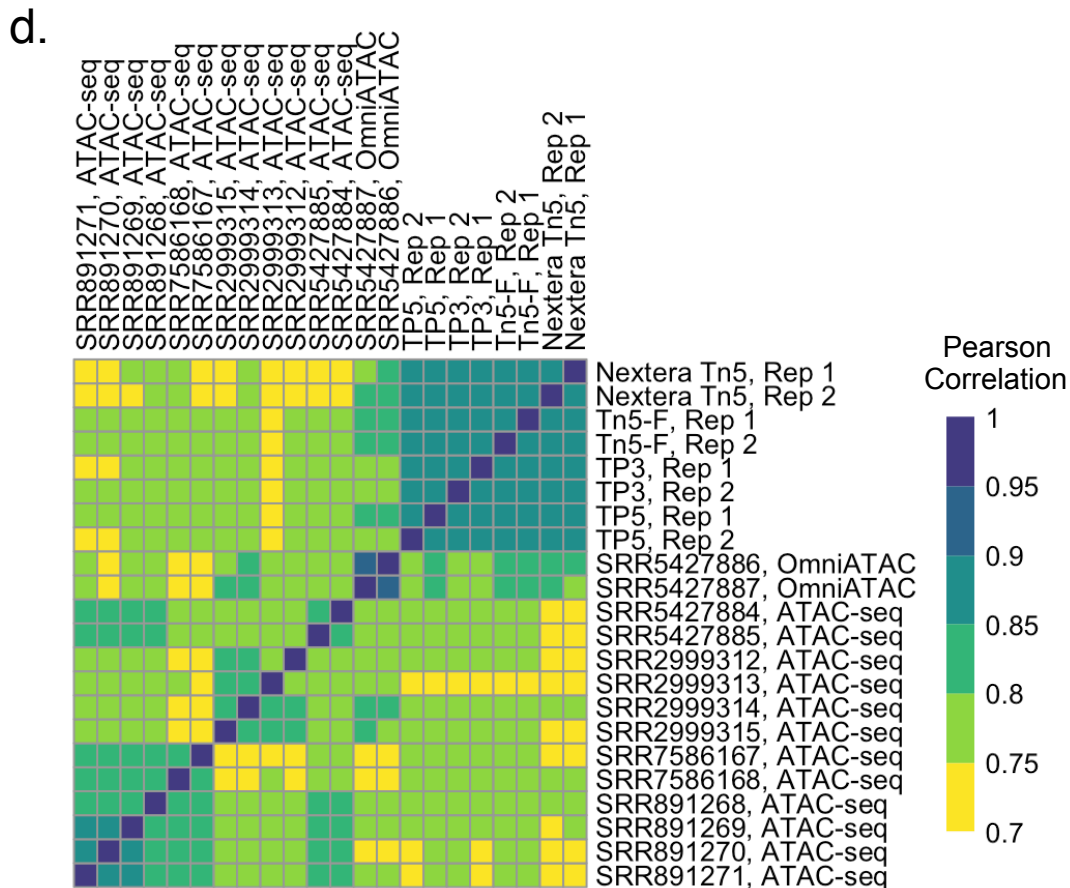
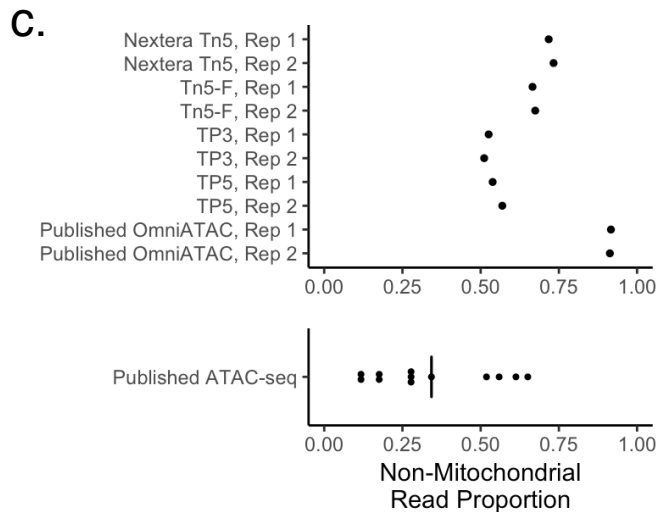
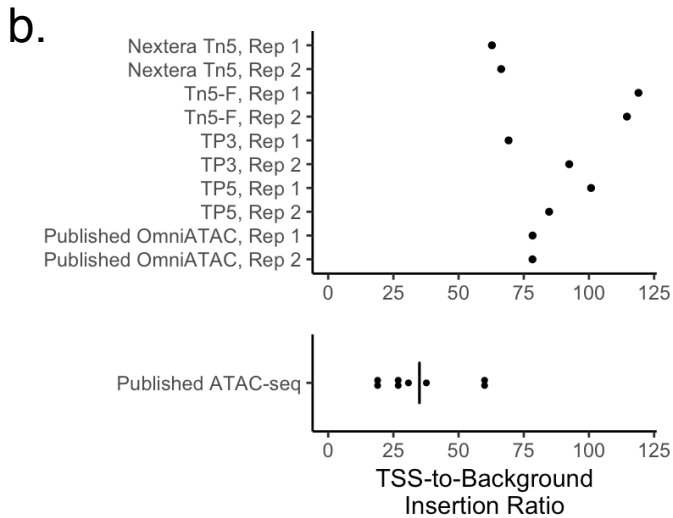
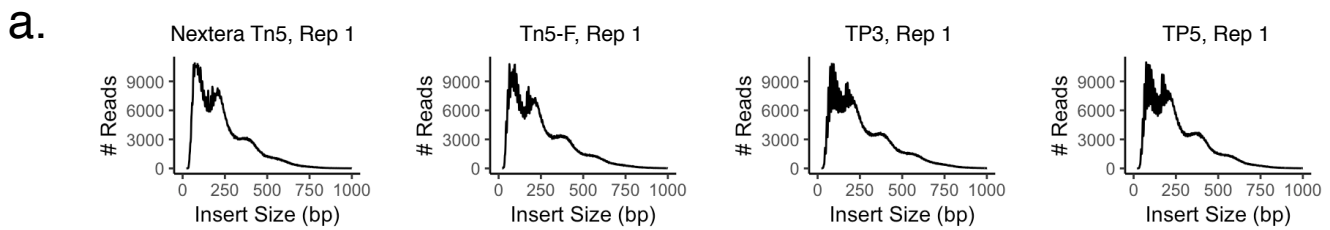
This article was downloaded from Harvard University's DASH repository, and is made available under the terms and conditions applicable to Other Posted Material, as set forth at <http://nrs.harvard.edu/urn-3:HUL.InstRepos:dash.current.terms-of-use#LAA>

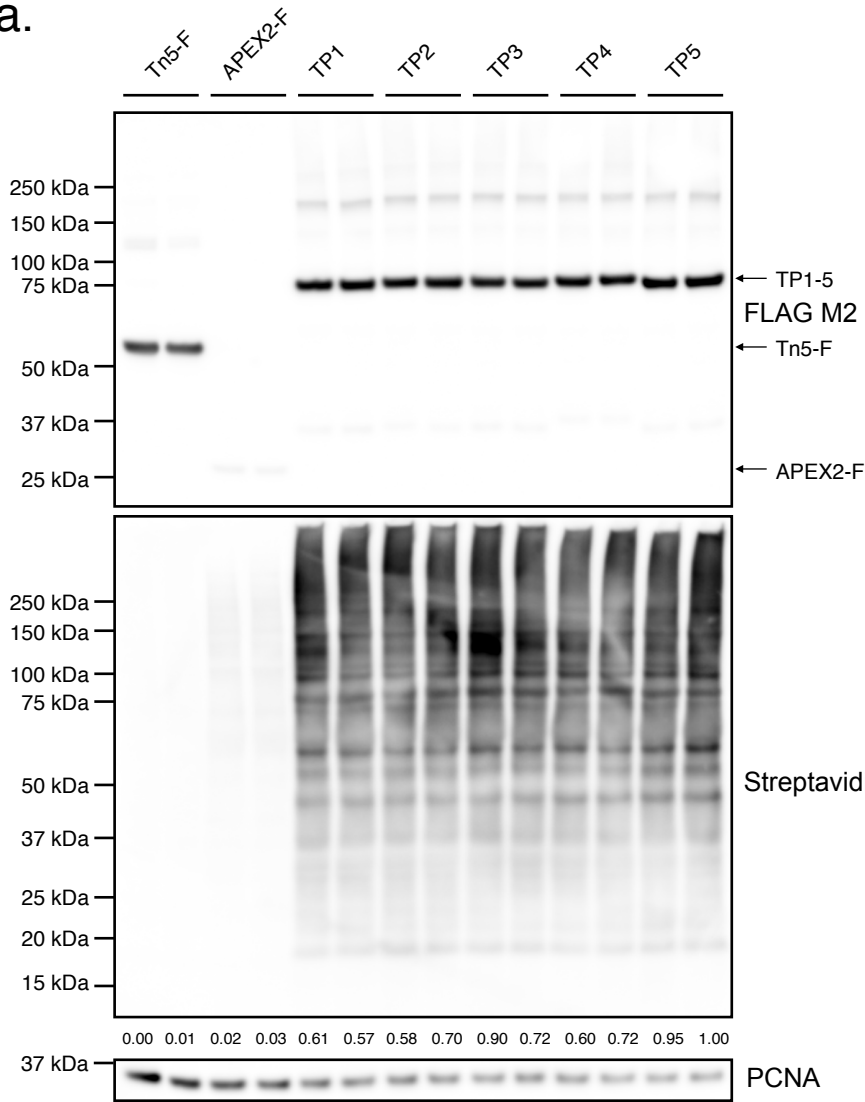
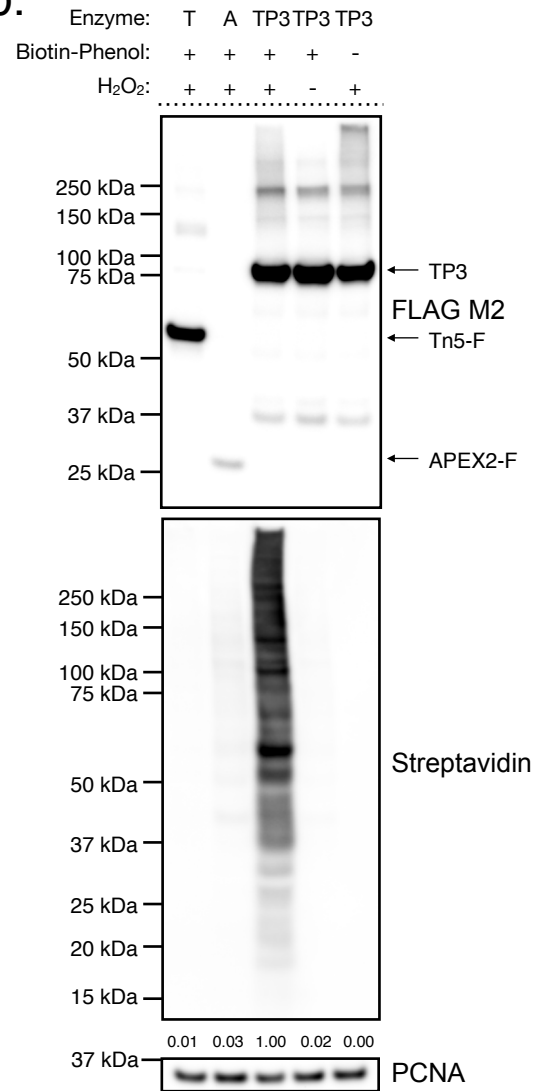
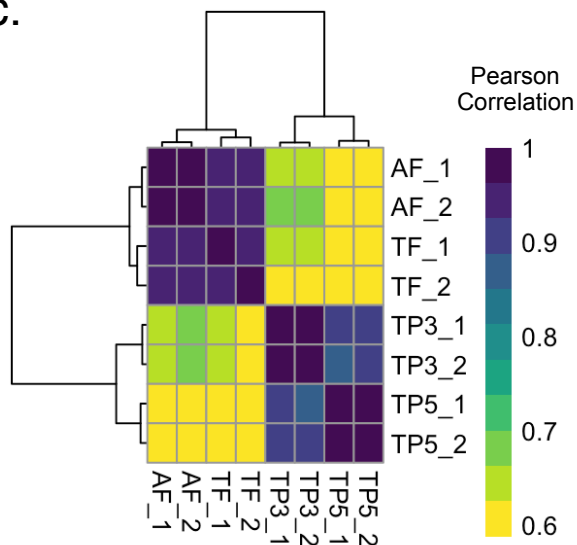
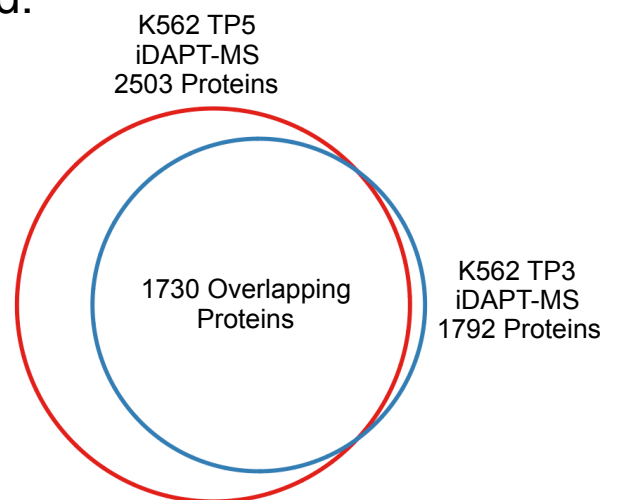
Share Your Story

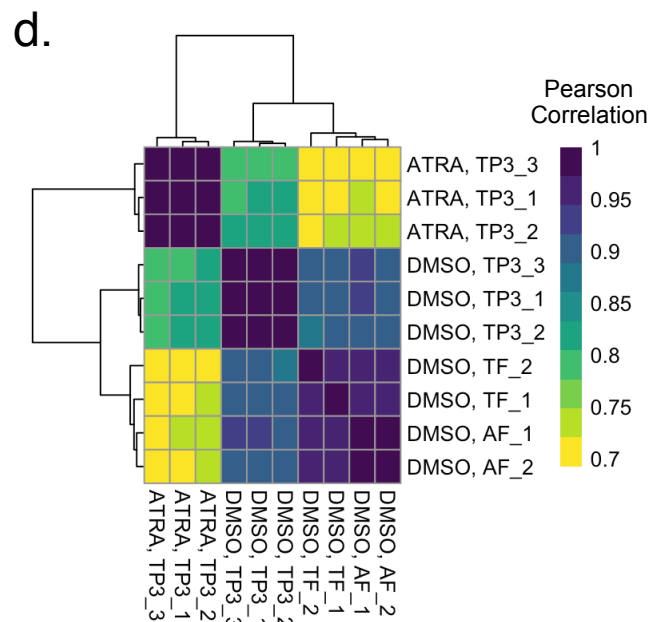
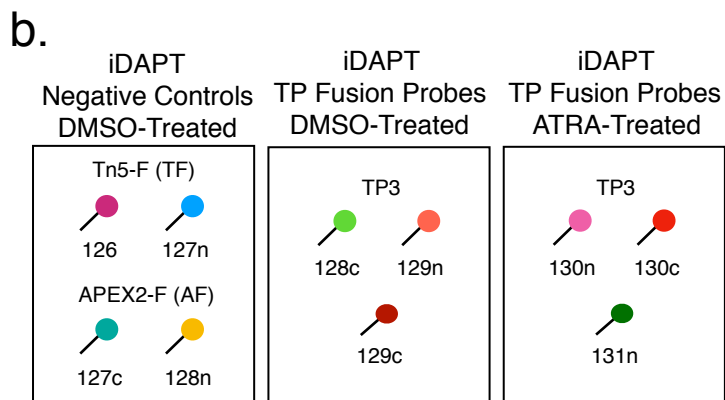
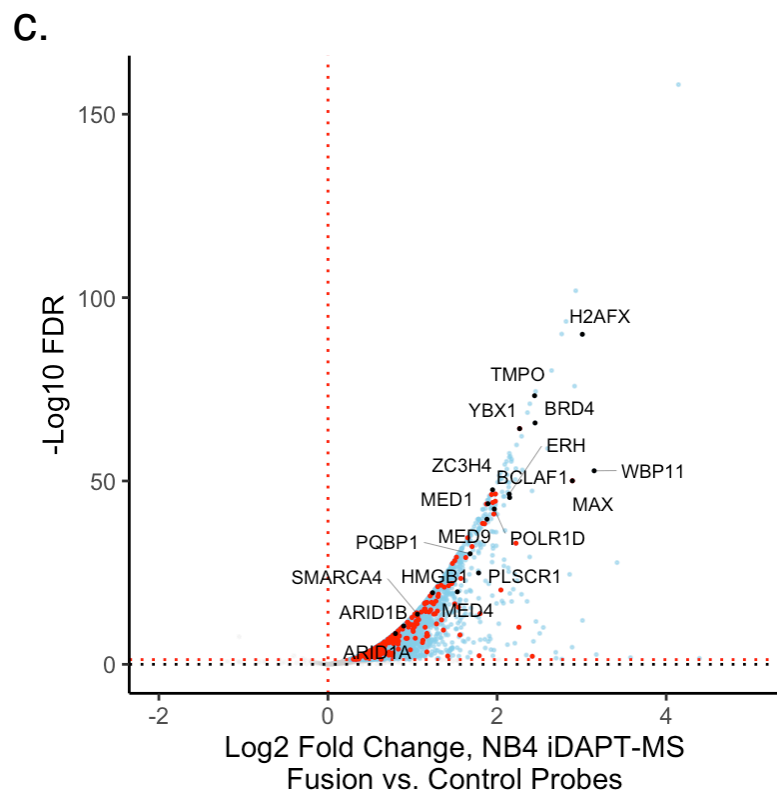
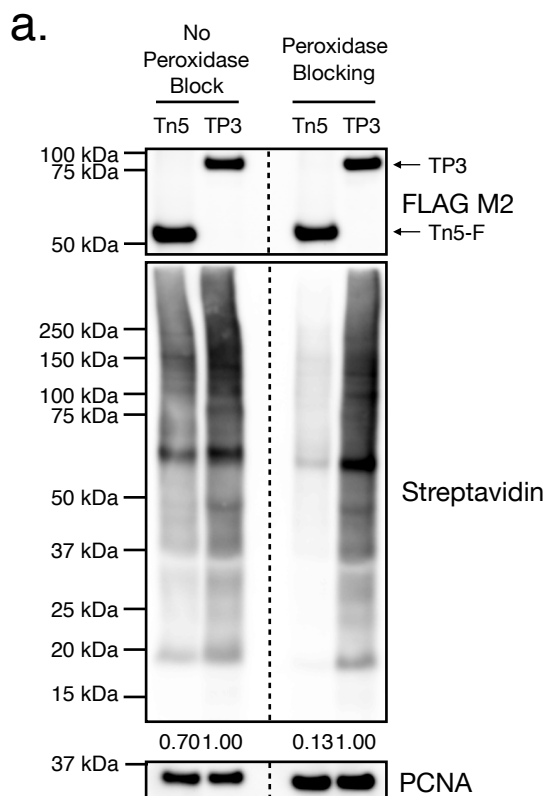
The Harvard community has made this article openly available.
Please share how this access benefits you. [Submit a story](#).

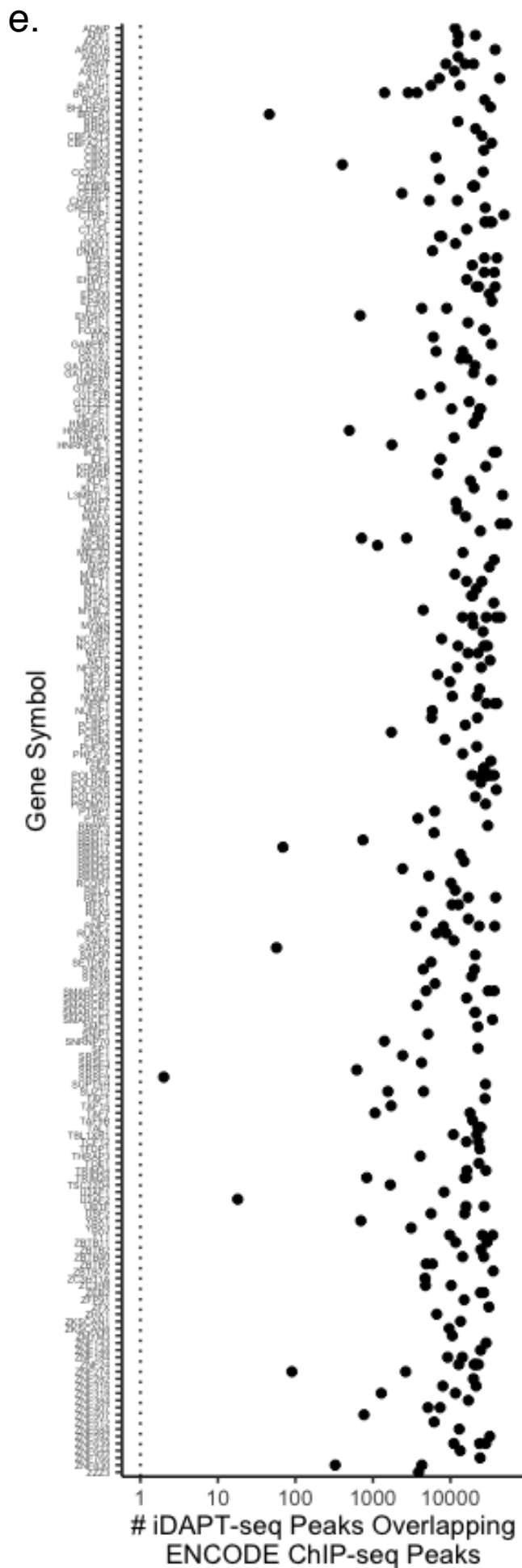
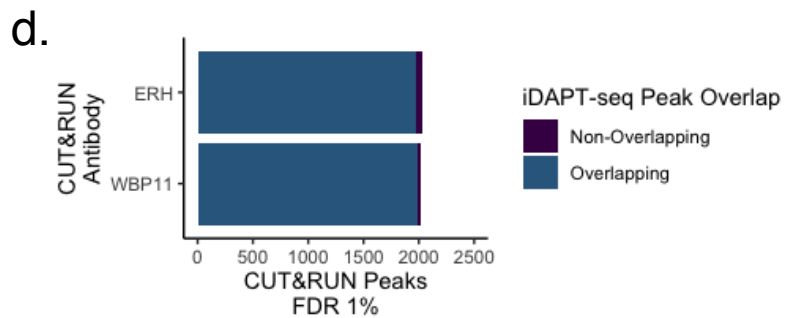
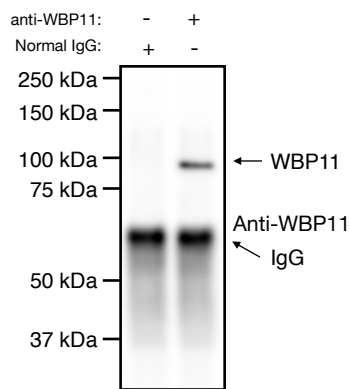
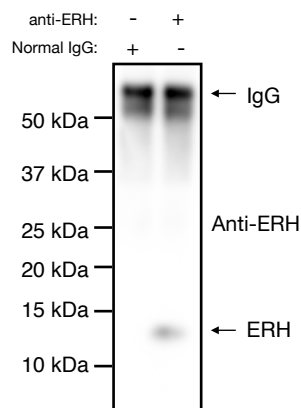
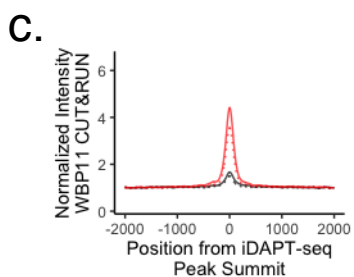
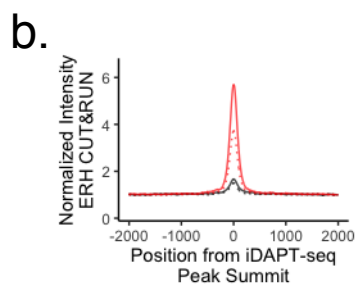
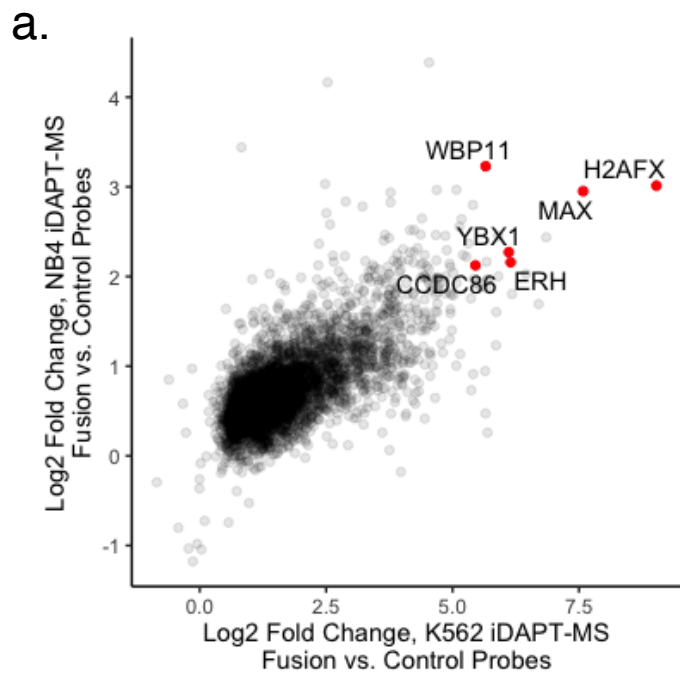
[Accessibility](#)

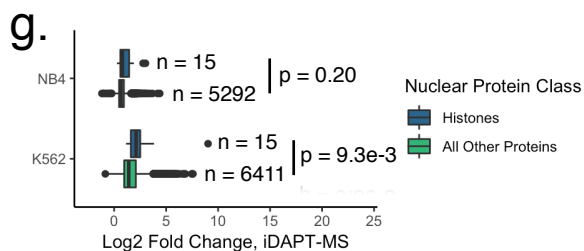
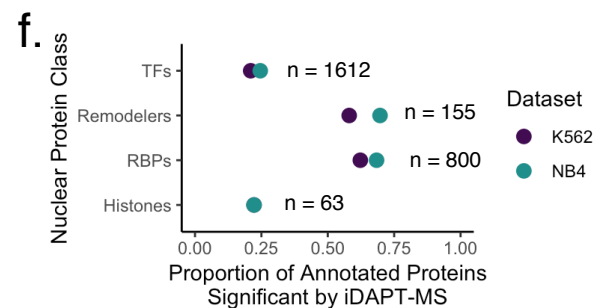
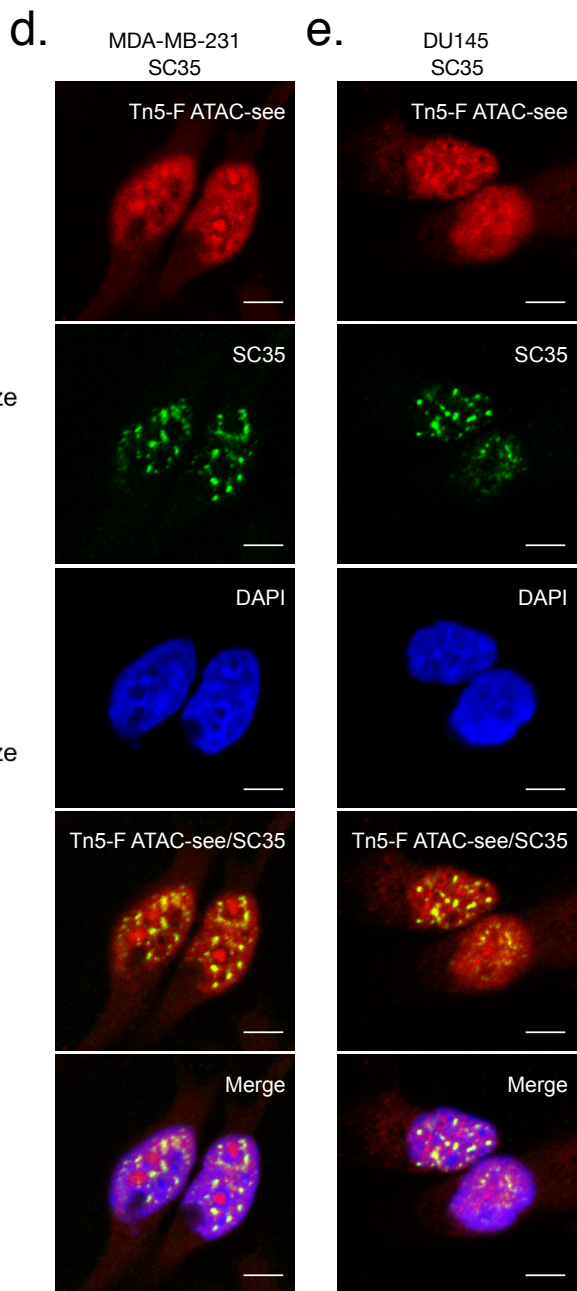
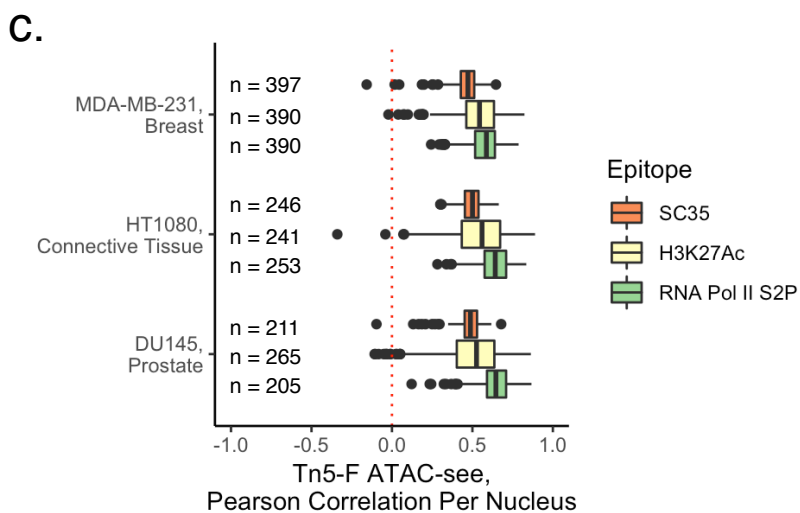
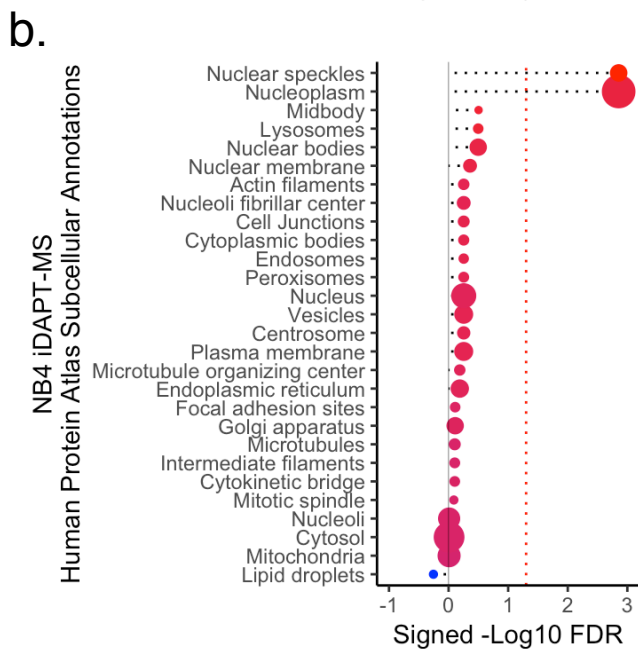
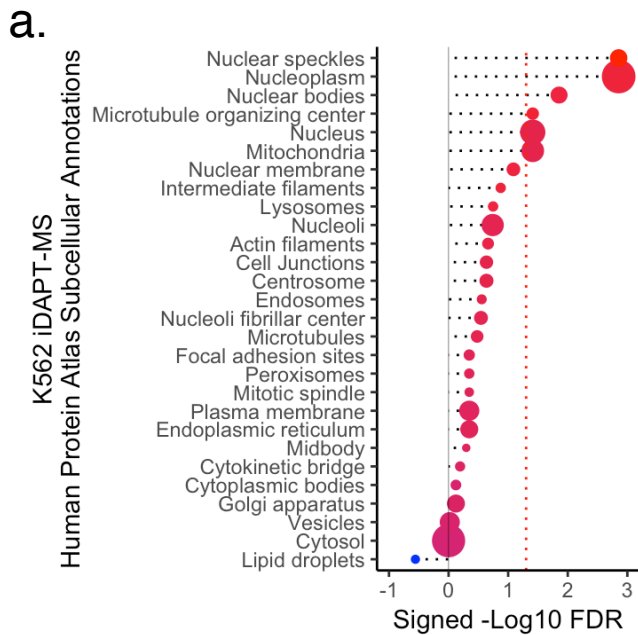




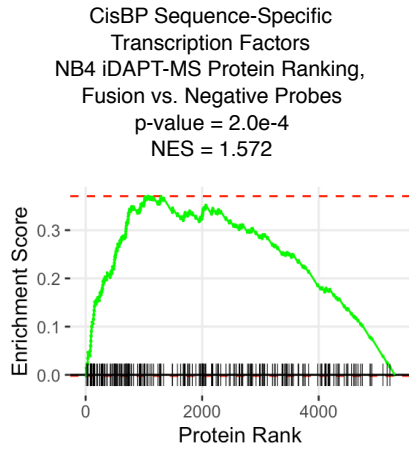
a.**b.****c.****d.**



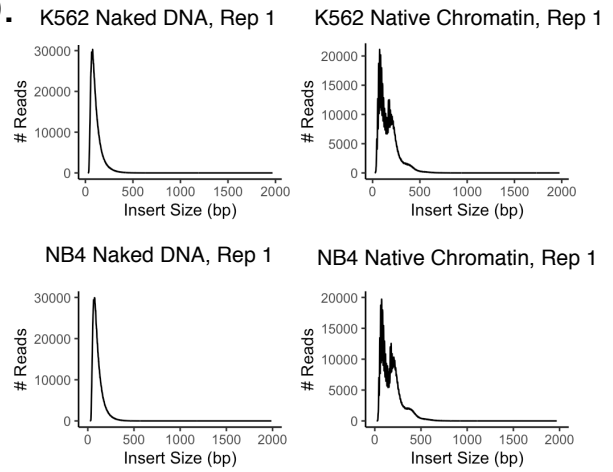




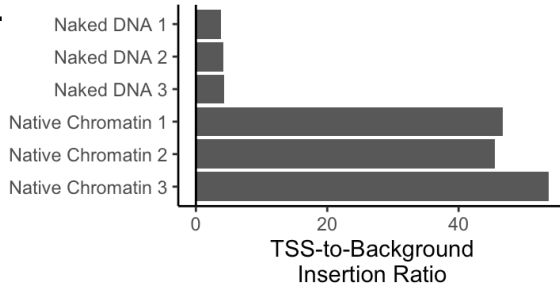
a.



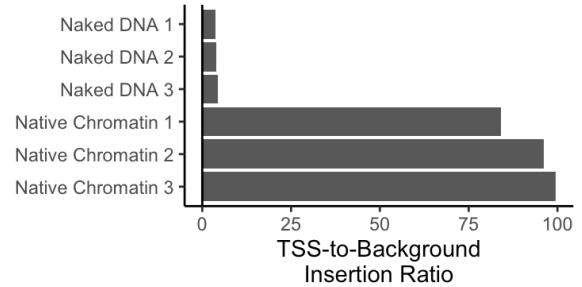
b.



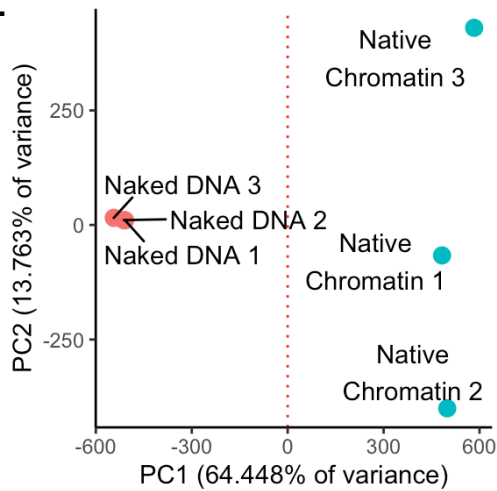
c.



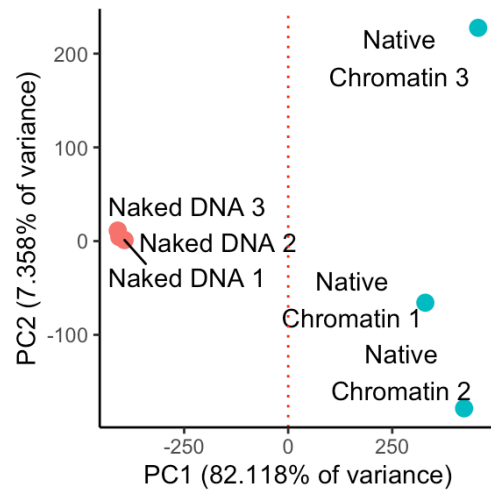
d.



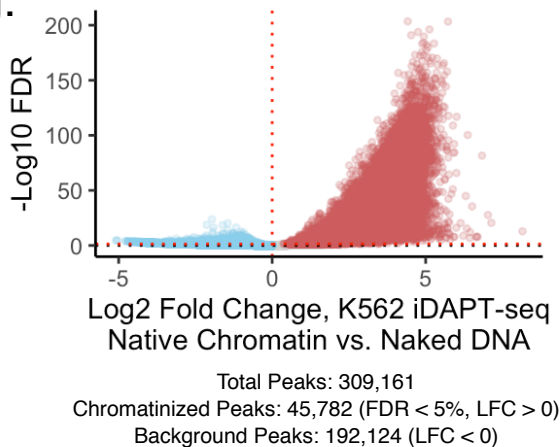
e.



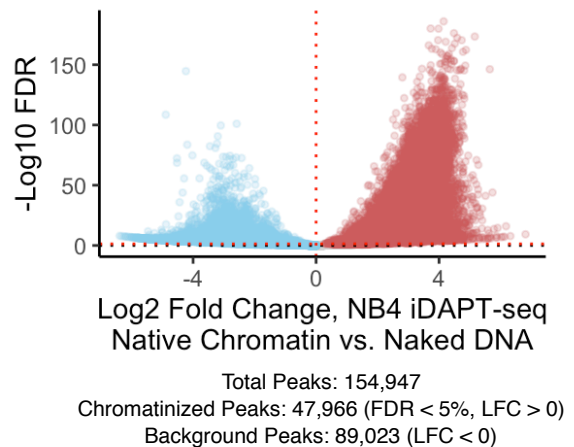
f.

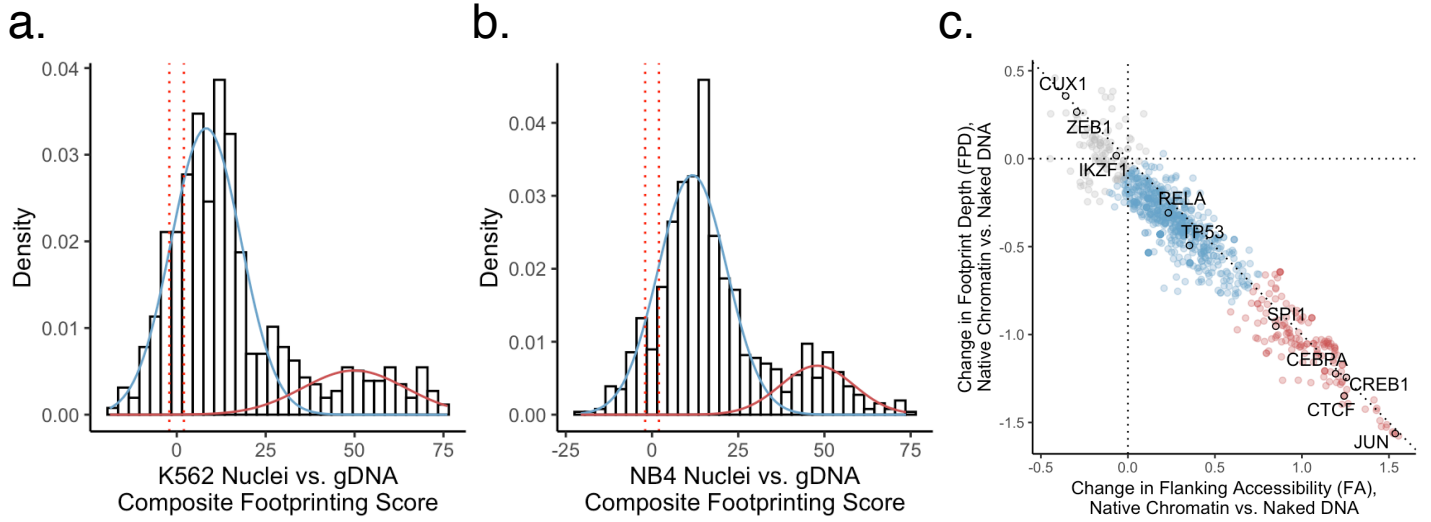


g.



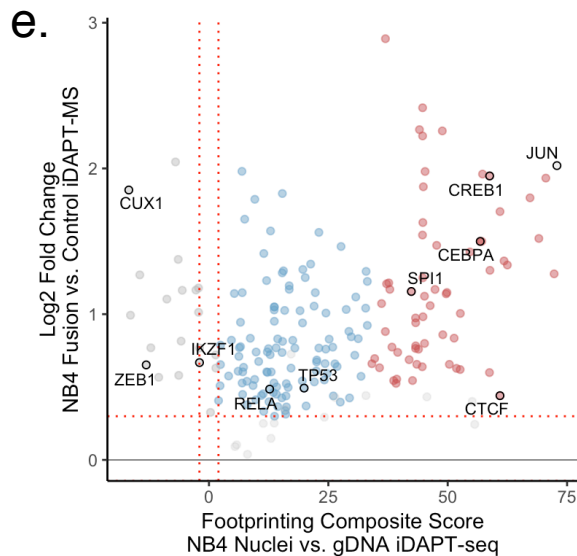
h.

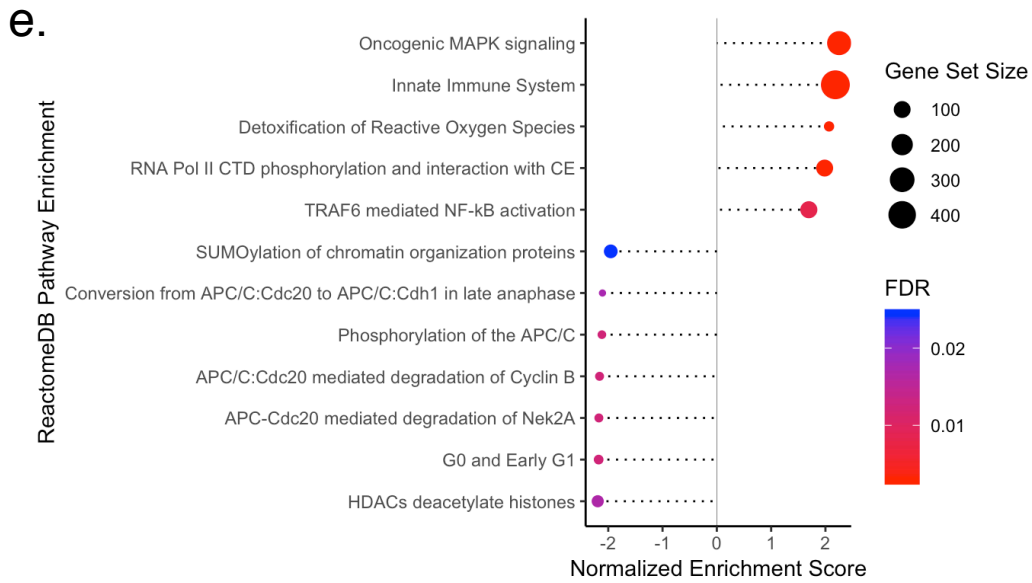
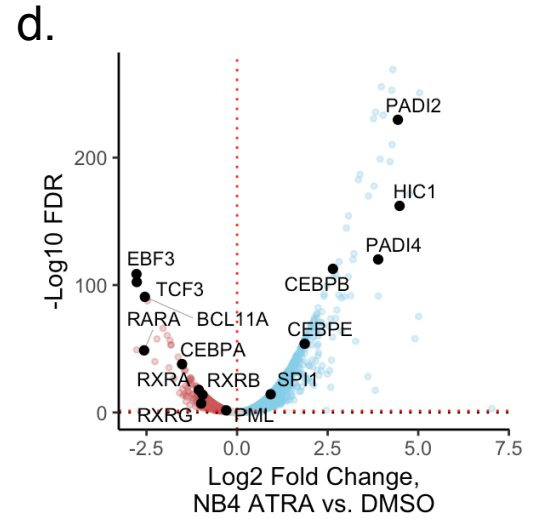
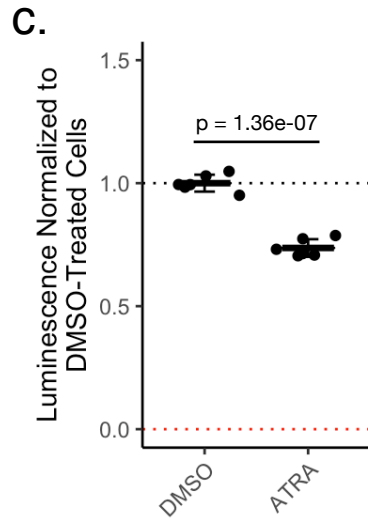
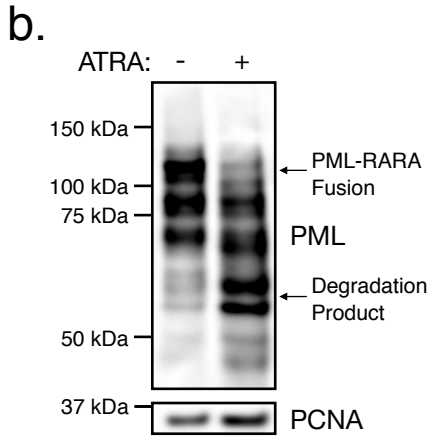
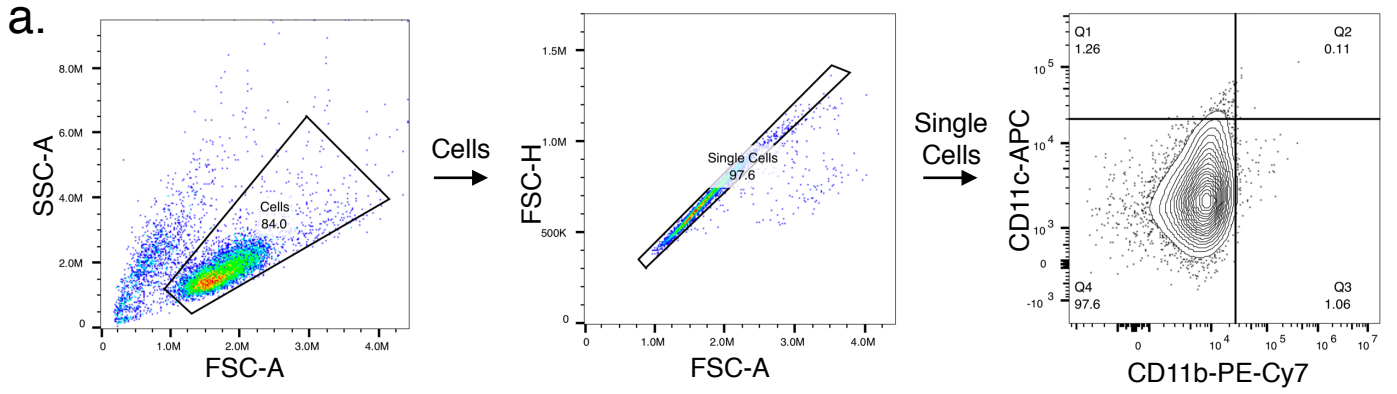




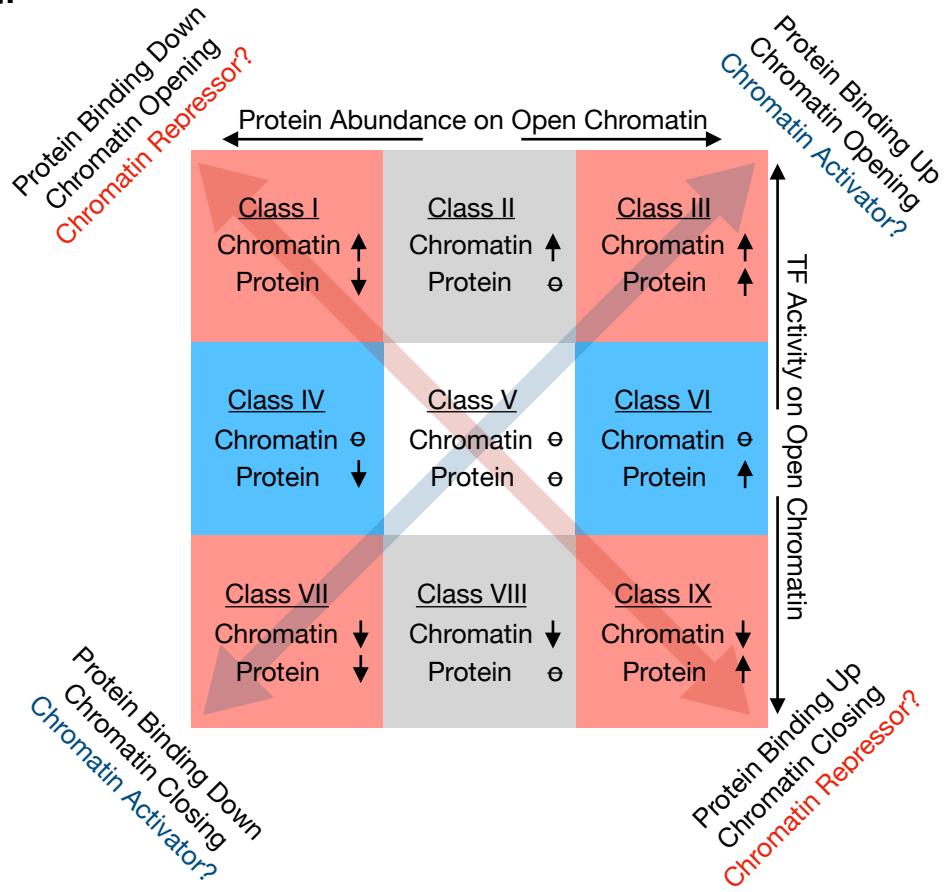
d. Strong Footprinting Weak Footprinting No/Negative Footprinting

Class A		Class A/B	Class B				Class B/C	Class C
ARID2	NFYA	CENPB	BBX	HIC2	PBX2	TOPORS	BPTF	ARID3B
BHLHE40	NFYB	E2F4	BRCA1	HIVEP1	RBPJ	YY1	NFATC2	CUX1
CREB1	NFYC	MBD2	CDC5L	HMBOX1	REL	ZBTB7A	NFIC	FUBP1
CTCF	NRF1	PURA	CIC	HMX3	RELA	ZKSCAN1	ZNF384	HMG20B
ELF1	RFX7	ZFX	CREB3L2	KDM2B	REST	ZKSCAN4		HMGA1
ETV6	SMARCC1	ZNF148	CXXC1	MAFG	RFX1	ZNF274		HOMEZ
GMEB2	SMARCC2	CBFB	DNMT1	MECP2	RREB1	ZNF281		IKZF1
KLF16	SP1	CEBPB	E2F3	MEF2D	SMAD4	ZNF282		IKZF4
MAFF	SP2	ELF2	E2F6	MGA	TCF12			LCOR
MAX	SP3	RUNX1	EP300	MYB	TCF3			LIN54
MLX	USF2	ZHX1	FOXK1	MYBL2	TERF2			VTN
NAIF1	YBX1		FOXK2	MYC	TFAP4			ZEB1
NFE2	ZNF143		FOXP1	NFIX	TFCP2			
NFIL3			FOXP4	PATZ1	TFDP1			





a.



b.

