



Dual DNA and Protein Tagging of Open Chromatin Unveils Dynamics of Epigenomic Landscapes in Leukemia

Citation

Lee, Jonathan D, Joao A Paulo, Ryan R Posey, Vera Mugoni, Nikki R Kong, Giulia Cheloni, Yu-Ru Lee, et al. 2021. "Dual DNA and Protein Tagging of Open Chromatin Unveils Dynamics of Epigenomic Landscapes in Leukemia." *Nature Methods* 18 (3): 293–302.

Published Version

<https://doi.org/10.1038/s41592-021-01077-8>

Permanent link

<https://nrs.harvard.edu/URN-3:HUL.INSTREPOS:37373075>

Terms of Use

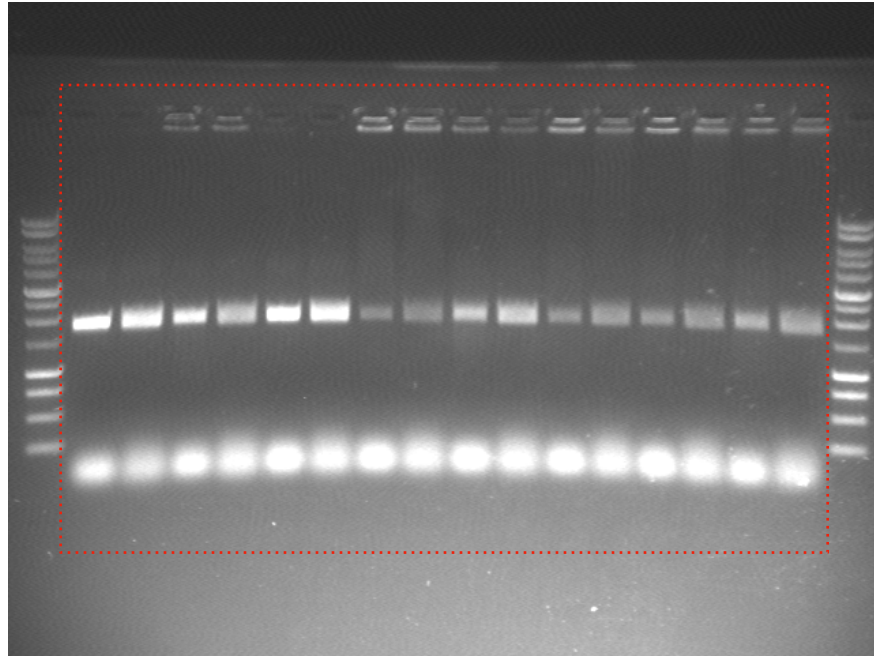
This article was downloaded from Harvard University's DASH repository, and is made available under the terms and conditions applicable to Other Posted Material, as set forth at <http://nrs.harvard.edu/urn-3:HUL.InstRepos:dash.current.terms-of-use#LAA>

Share Your Story

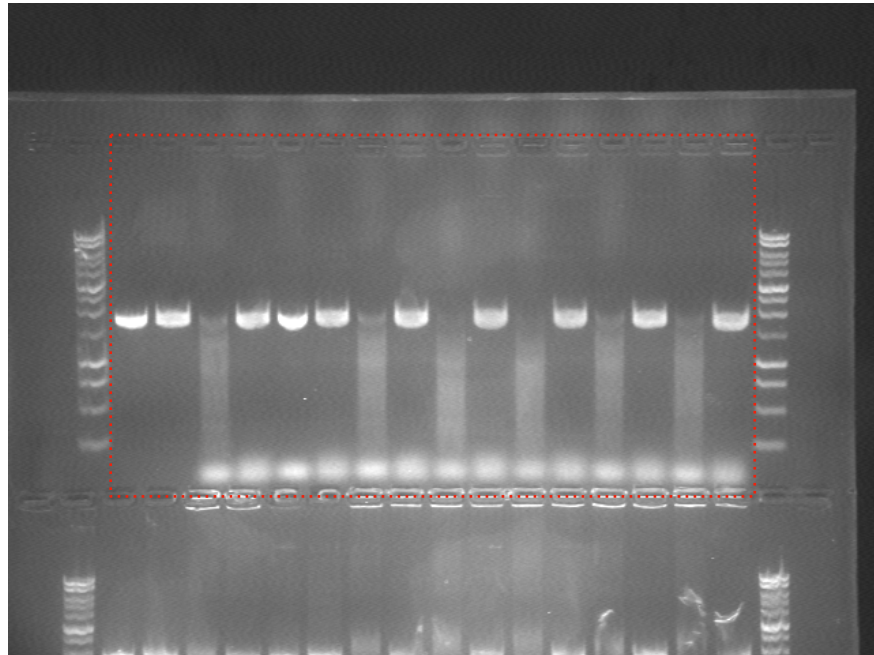
The Harvard community has made this article openly available.
Please share how this access benefits you. [Submit a story](#).

[Accessibility](#)

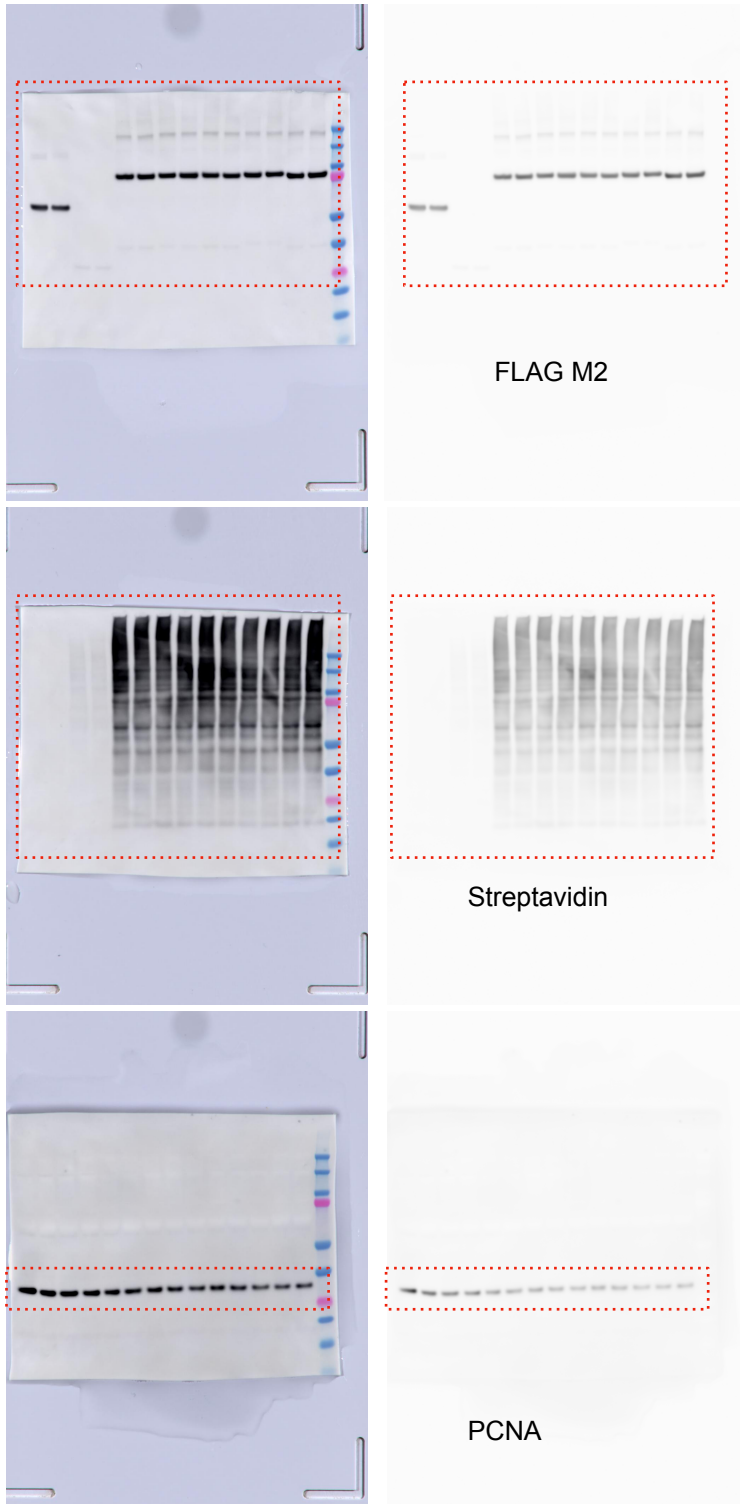
Extended Data Fig. 1e



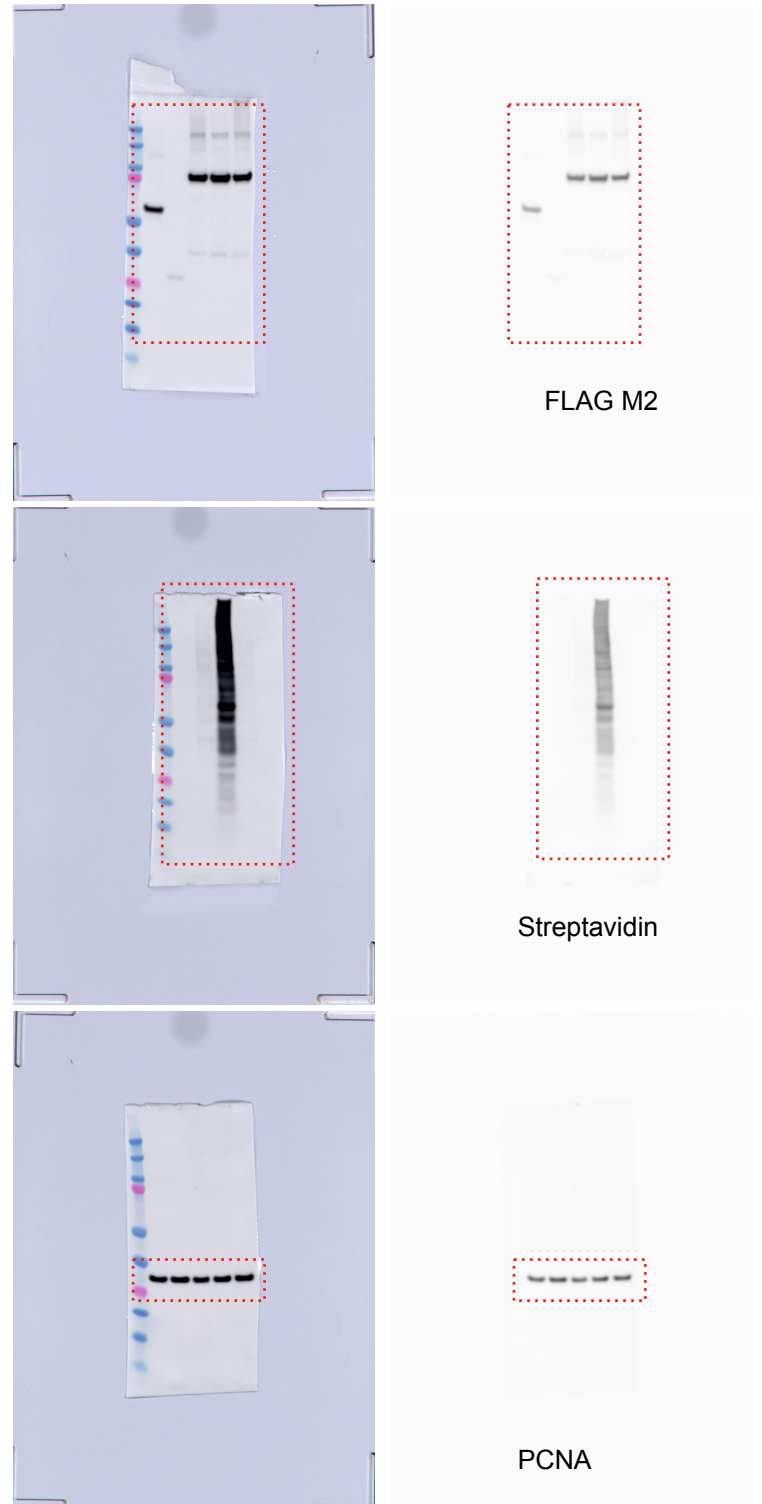
Extended Data Fig. 1f



Extended Data Fig. 3a



Extended Data Fig. 3b



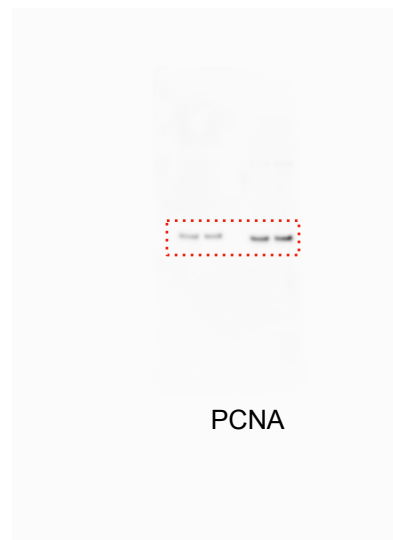
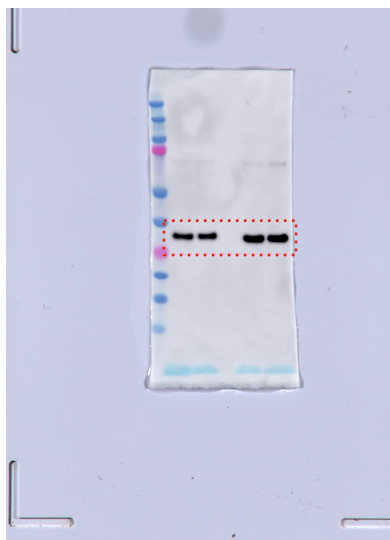
Extended Data Fig. 4a



FLAG M2

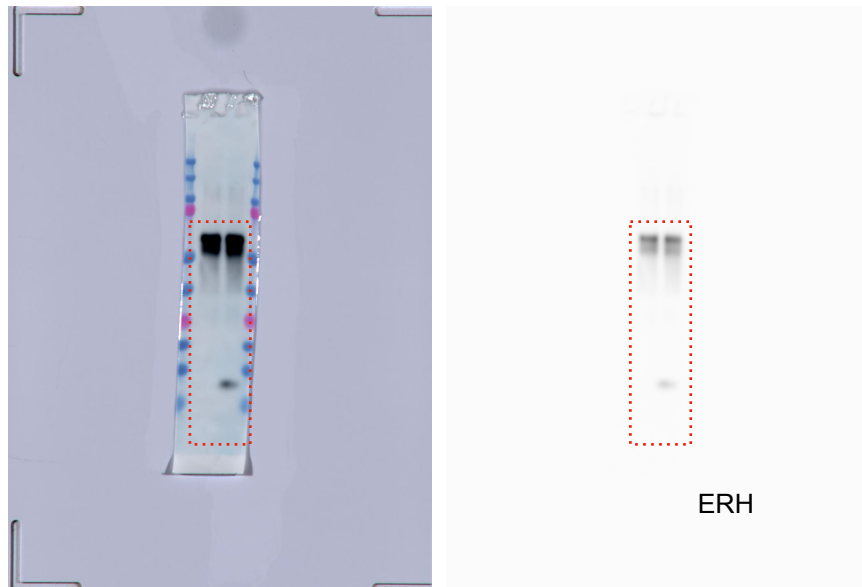


Streptavidin

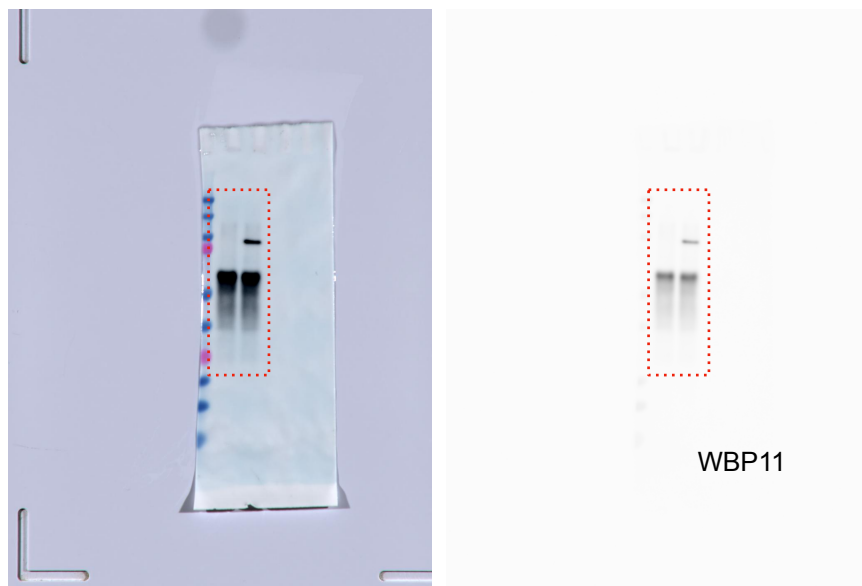


PCNA

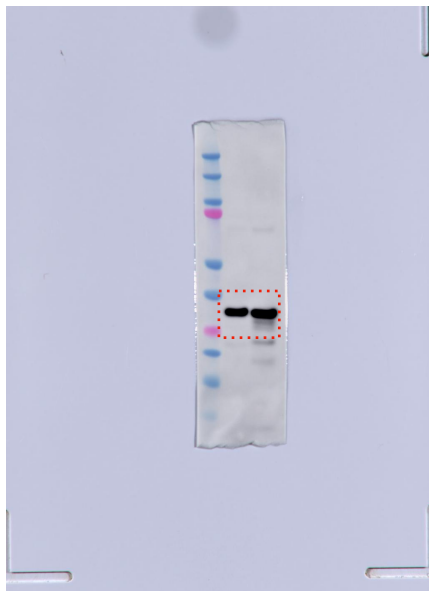
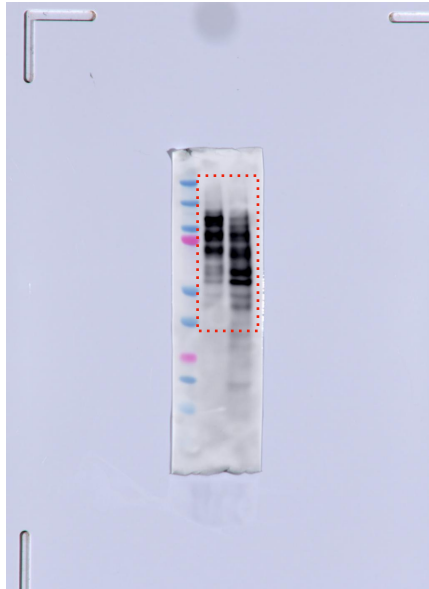
Extended Data Fig. 5b (lower)



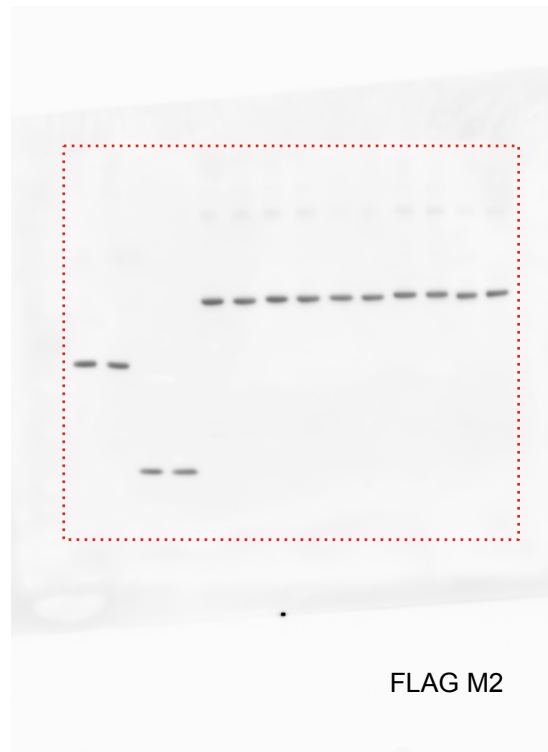
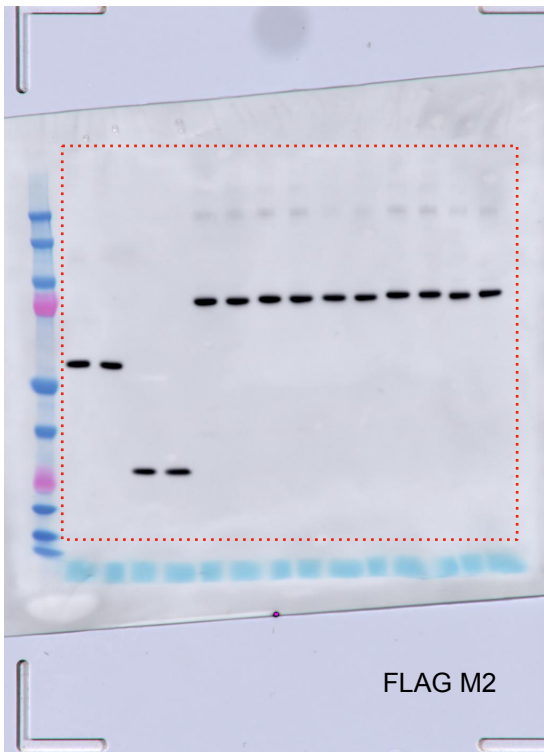
Extended Data Fig. 5c (lower)



Extended Data Fig. 9b



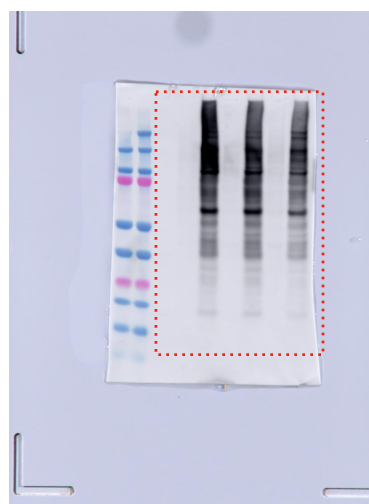
Supplementary Fig. 1a



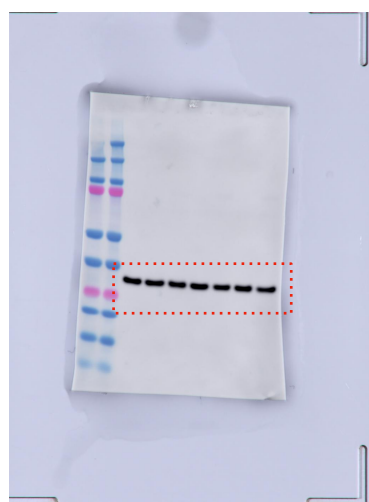
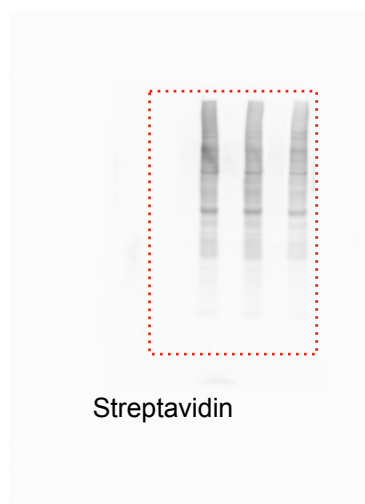
Supplementary Fig. 2b



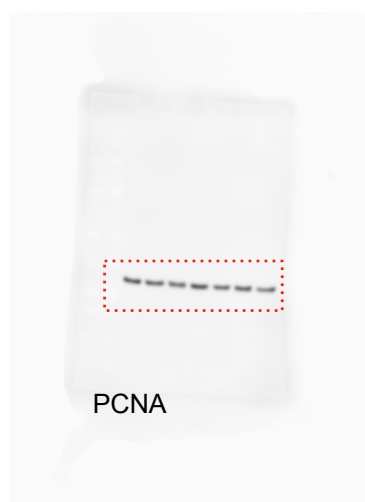
FLAG M2



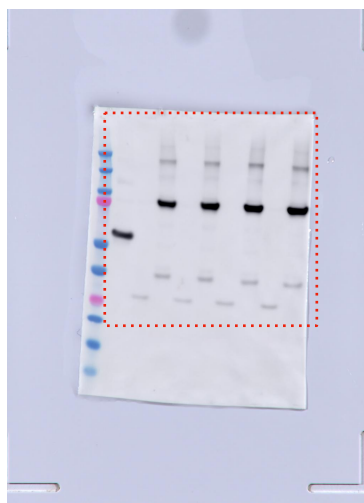
Streptavidin



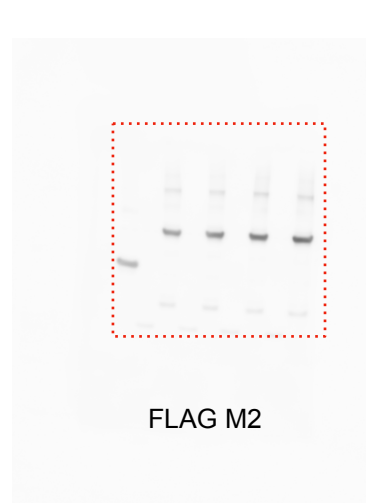
PCNA



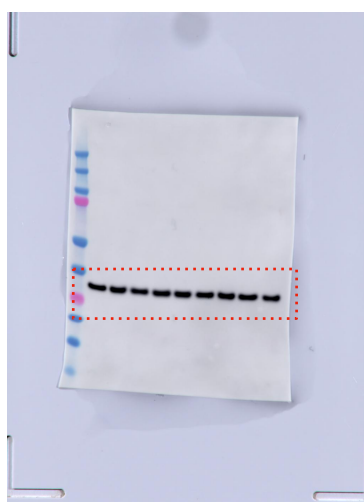
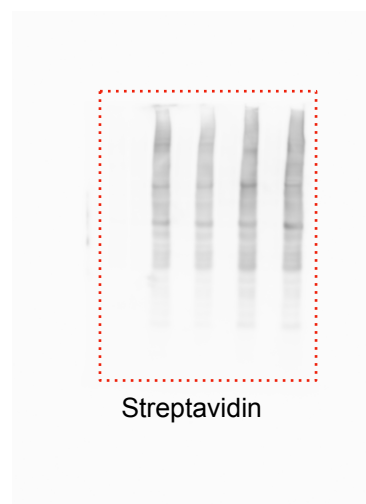
Supplementary Fig. 2c



FLAG M2



Streptavidin



PCNA

