



Genome-wide Association Study of Glioma and Meta-Analysis

Citation

Rajaraman, Preetha, Beatrice S. Melin, Zhaoming Wang, Roberta McKean-Cowdin, Dominique S. Michaud, Sophia S. Wang, Melissa Bondy, et al. 2012. "Genome-Wide Association Study of Glioma and Meta-Analysis." *Human Genetics* 131 (12): 1877–88. <https://doi.org/10.1007/s00439-012-1212-0>.

Permanent link

<http://nrs.harvard.edu/urn-3:HUL.InstRepos:41292559>

Terms of Use

This article was downloaded from Harvard University's DASH repository, and is made available under the terms and conditions applicable to Other Posted Material, as set forth at <http://nrs.harvard.edu/urn-3:HUL.InstRepos:dash.current.terms-of-use#LAA>

Share Your Story

The Harvard community has made this article openly available.
Please share how this access benefits you. [Submit a story](#).

[Accessibility](#)

Published in final edited form as:

Hum Genet. 2012 December ; 131(12): 1877–1888. doi:10.1007/s00439-012-1212-0.

Genome-wide Association Study of Glioma and Meta-Analysis

Preetha Rajaraman^{1,*}, Beatrice S. Melin^{2,*}, Zhaoming Wang^{1,3,*}, Roberta McKean-Cowdin^{4,*}, Dominique Michaud^{5,6,*}, Sophia S. Wang⁷, Melissa Bondy⁸, Richard Houlston⁹, Robert B. Jenkins¹⁰, Margaret Wrensch¹¹, Meredith Yeager^{1,3}, Anders Ahlbom¹², Demetrius Albanes¹, Ulrika Andersson², Laura E. Beane Freeman¹, Julie E. Buring¹³, Mary Ann Butler¹⁴, Melissa Braganza¹, Tania Carreon¹⁴, Maria Feychting¹², Sarah J. Fleming¹⁵, Susan M. Gapstur¹⁶, J. Michael Gaziano^{13,17}, Graham G. Giles^{18,19}, Goran Hallmans²⁰, Roger Henriksson², Judith Hoffman-Bolton²¹, Peter D. Inskip¹, Christoffer Johansen²², Cari M. Kitahara¹, Mark Lathrop^{23,24}, Chenwei Liu³, Loic Le Marchand²⁵, Martha S. Linet¹, Stefan Lonn^{12,26}, Ulrike Peters^{27,28}, Mark P. Purdue¹, Nathaniel Rothman¹, Avima M. Ruder¹⁴, Marc Sanson²⁹, Howard D. Sesso¹³, Gianluca Severi^{17,18}, Xiao-Ou Shu³⁰, Matthias Simon³¹, Meir Stampfer^{32,33}, Victoria L. Stevens¹⁶, Kala Visvanathan^{21,34}, Emily White^{27,28}, Alicja Wolk³⁵, Anne Zeleniuch-Jacquotte³⁶, Wei Zheng³⁰, Paul Decker¹⁰, Victor Enciso-Mora⁹, Brooke Fridley¹⁰, Yu-Tang Gao³⁷, Matt Kosel¹⁰, Dan Lachance¹⁰, Ching Lau⁸, Terri Rice¹¹, Anthony Swerdlow^{9,38}, Joe Wiemels¹¹, John Wiencke¹¹, Sanjay Shete³⁹, Yong-Bing Xiang³⁷, Yuanyuan Xiao¹¹, Robert Hoover¹, Joseph F. Fraumeni Jr.¹, Nilanjan Chatterjee¹, Patricia Hartge^{1,**}, and Stephen J. Chanock^{1,3,**}

¹Division of Cancer Epidemiology and Genetics, National Cancer Institute, Rockville, MD, USA

²Department of Radiation Sciences, Oncology, Umeå University, Umeå, Sweden

³Core Genotyping Facility, National Cancer Institute, SAIC-Frederick, Inc., Gaithersburg, MD, USA

⁴Department of Preventive Medicine, Keck School of Medicine, University of Southern California, Los Angeles, CA, USA

⁵Department of Epidemiology, Division of Biology and Medicine, Brown University, Providence, RI, USA

⁶School of Public Health, Imperial College London, London, UK

Address for Correspondence: Preetha Rajaraman REB, National Cancer Institute, NIH, DHHS 6120 Executive Blvd, EPS Room 7058 Bethesda, MD 20892-7238 Tel: (301) 654-1088 rajarama@mail.nih.gov.

*These authors contributed equally to this work

**The authors jointly directed this work

URLs: CGEMS portal: <http://cgems.cancer.gov/>

CGF: <http://cgf.nci.nih.gov/>

GLU: <http://code.google.com/p/glu-genetics/>

EIGENSTRAT: <http://genepath.med.harvard.edu/~reich/EIGENSTRAT.htm>

STRUCTURE: <http://pritch.bsd.uchicago.edu/structure.html>

PLINK: <http://pngu.mgh.harvard.edu/~purcell/plink/>

SAS: <http://www.sas.com/>

Author Contributions PR, BSM, RMC, DM, SSW, PH, SC designed the study and wrote the proposal.

PR, BSM, PH, SC organized the study and sample co-ordination.

MY, SC conducted and supervised genotyping of samples.

PR, ZW, BSM, MY, NC, SC contributed to the design and execution of statistical analysis.

PR, ZW, SC wrote the first draft of the manuscript.

PR, BSM, RMC, DM, MB, RH, RJ, MW, AA, DA, UA, LBF, JEB, MAB, TC, MF, SMG, JMG, GGG, GH, RH, JHB, PDI, CJ, ML,

LLM, MSL, SL, UP, MPP, NR, AMR, MS, HDS, GS, XOS, MS, MS, VLS, KV, EW, AW, AZJ, WZ, AS conducted the

epidemiologic studies and contributed samples to the glioma cancer GWAS and/or replication.

All authors contributed to the writing of the manuscript

Please see **Supplementary Material** for information on support for individual studies that participated in the effort.

⁷Division of Cancer Etiology, Department of Population Sciences, City of Hope and the Beckman Research Institute, Duarte, CA, USA

⁸Baylor College of Medicine, TX, USA

⁹Division of Genetics and Epidemiology, Institute of Cancer Research, Sutton, UK

¹⁰Mayo Clinic, MN, USA

¹¹University of California San Francisco, CA, USA

¹²Division of Epidemiology, Institute of Environmental Medicine, Karolinska Institutet, Stockholm, Sweden

¹³Division of Preventive Medicine, Brigham and Women's Hospital and Harvard Medical School, Boston, MA USA

¹⁴National Institute for Occupational Safety and Health, Centers for Disease Control and Prevention, Cincinnati, OH, USA

¹⁵Division of Biostatistics, University of Leeds, UK

¹⁶Epidemiology Research Program, American Cancer Society, Atlanta, GA, USA

¹⁷Massachusetts Veteran's Epidemiology, Research and Information Center, Geriatric Research Education and Clinical Center, VA Boston Healthcare System, Boston, MA, USA

¹⁸Cancer Epidemiology Centre, Cancer Council of Victoria, Melbourne, Australia

¹⁹Centre for Molecular, Environmental, Genetic, and Analytic Epidemiology, University of Melbourne, Melbourne, Australia

²⁰Department of Public Health and Clinical Medicine/Nutritional Research, Umeå University, Umeå, Sweden

²¹Johns Hopkins Bloomberg School of Public Health, Baltimore, MD, USA

²²The Danish Cancer Society Research Center, Unit of Survivorship, Copenhagen, Denmark

²³Centre National de Genotypage, IG/CEA, Evry Cedex, France

²⁴Foundation Jean Dauset-CEPH, Paris, France

²⁵University of Hawaii, Cancer Research Center

²⁶Medical Department, AstraZeneca Nordic, Sweden

²⁷Fred Hutchinson Cancer Research Center, Seattle, WA, USA

²⁸Department of Epidemiology, University of Washington, Seattle, WA, USA

²⁹Service de Neurologie Mazarin, GH Pitié-Salpêtrière, APHP, and UMR 975 INSERM-UPMC, CRICM, Paris, France

³⁰Vanderbilt University Medical Center, Nashville, TN, USA

³¹Neurochirurgische Universitätsklinik, Bonn, Germany

³²Channing Laboratory, Brigham and Women's Hospital, Harvard Medical School, Boston, MA, USA

³³Departments of Epidemiology and Nutrition, Harvard School of Public Health, Boston, MA, USA

³⁴Johns Hopkins Sidney Kimmel Comprehensive Cancer Center, Baltimore, MD, USA

³⁵Division of Nutritional Epidemiology, Institute of Environmental Medicine, Karolinska Institutet, Stockholm, Sweden

³⁶Division of Epidemiology, Department of Environmental Medicine, NYU School of Medicine, New York, NY, USA

³⁷Department of Epidemiology, Shanghai Cancer Institute, Renji Hospital, Shanghai Jiaotong University School of Medicine, Shanghai, China

³⁸Division of Breast Cancer Research, Institute of Cancer Research, London, UK

³⁹Department of Biostatistics, MD Anderson Cancer Center, TX, USA

Abstract

Gliomas account for approximately 80% of all primary malignant brain tumors, and despite improvements in clinical care over the last 20 years remain among the most lethal tumors, underscoring the need for gaining new insights that could translate into clinical advances. Recent genome-wide association studies (GWAS) have identified seven new susceptibility regions. We conducted a new independent GWAS of glioma using 1,856 cases and 4,955 controls (from 14 cohort studies, 3 case-control studies, and 1 population-based case only study) and found evidence of strong replication for three of the seven previously reported associations at 20q13.33 (*RTEL*), 5p15.33 (*TERT*), and 9p21.3 (*CDKN2BAS*), and consistent association signals for the remaining four at 7p11.2 (*EGFR* both loci), 8q24.21 (*CCDC26*) and 11q23.3 (*PHLDB1*). The direction and magnitude of the signal were consistent for samples from cohort and case-control studies, but the strength of the association was more pronounced for loci rs6010620 (20q,13.33; *RTEL*) and rs2736100 (5p15.33, *TERT*) in cohort studies despite the smaller number of cases in this group, likely due to relatively more higher grade tumors being captured in the cohort studies. We further examined the 85 most promising single nucleotide polymorphism (SNP) markers identified in our study in three replication sets (5,015 cases and 11,601 controls), but no new markers reached genome-wide significance. Our findings suggest that larger studies focusing on novel approaches as well as specific tumor subtypes or subgroups will be required to identify additional common susceptibility loci for glioma risk.

Introduction

Gliomas account for approximately 80% of all primary malignant brain tumors (Kohler et al. 2011) and despite improvements in clinical care over the last 20 years, remain associated with considerable morbidity, with the most common histological subtype, glioblastoma (GBM) having a median survival of only 15 months (CBTRUS 2012). To date the only established environmental risk factor is exposure to moderate-to-high doses of ionizing radiation (Bondy et al. 2008). A heritable component of glioma is supported by: the two-fold elevated risk in individuals with a positive family history (Hemminki et al. 2009; Malmer et al. 2003; Scheurer et al. 2007; Wrensch et al. 1997); an increased risk observed in rare genetic syndromes (Farrell and Plotkin 2007); a possible moderately penetrant risk locus in the 3' untranslated region of TP53 (Stacey et al. 2011); and recent identification by genome-wide association studies (GWAS) of common susceptibility variants at 5p15.33 (*TERT*), 8q24.21 (*CCDC26*), 9p21.3 (*CDKN2A-CDKN2B*), 20q13.33 (*RTEL1*), 11q23.3 (*PHLDB1*), and two independent signals at 7p11.2 (*EGFR*) (Sanson et al. 2011; Shete et al. 2009; Wrensch et al. 2009)

To search for additional common genetic variants we conducted a new independent GWAS in 1,856 cases and 4,955 controls ascertained from 14 cohort studies, 3 case-control studies, and 1 population-based case-only study (Table 1). Previous GWAS studies were based on case-control samples only. Our study was designed to include a large number of incident cases from cohort studies (556 out of 1856, i.e. 30% of all cases) to minimize potential bias to glioma with longer survival.

Results

Study-specific population characteristics are summarized in Table 1. The mean age of cases ranged from 48.7 years in the NIOSH Upper Midwest Health Study to 73.5 years in the Multi-Ethnic Cohort. 55.1% of glioma cases were of the glioblastoma subtype, with a larger percentage of high grade tumors (WHO III or IV) observed in cohort (74.7%) versus case-control (64.5%) studies (Supplementary Table 1).

After quality control metrics were applied to the scan data, 559,977 SNPs were available for analysis in 1,856 cases and 4,955 controls (details in Materials and Methods). Concordance between known duplicates was greater than 99.95%. The main effect model was adjusted by sex, age, study and seven eigenvectors (to account for small differences in population substructure). Examination of the Q-Q plot indicated the likelihood of additional loci associated with glioma risk (Figure 1). The genomic control lambda for the study is estimated at 1.006, suggesting the lack of issues related to differences in the underlying population substructure.

The results of this genome-wide association scan confirmed the previously reported seven regions as risk susceptibility loci for glioma (Figure 2). Specifically, we replicated three of seven previously reported associations at 20q13.33 (*RTEL*), 5p15.33 (*TERT*), and 9p21.3 (*CDKN2BAS*) (Table 2). Associations for the remaining loci were consistent with reported findings with respect to the direction of the odds ratios, but were not statistically significant at the genome-wide level (i.e. $p < 5.0 \times 10^{-8}$). When results were examined separately for samples from cohort versus case-control studies, the direction and magnitude of the signal were generally consistent. However, the strength of the association was more pronounced for loci rs6010620 (20q,13.33; *RTEL*) and rs2736100 (5p15.33, *TERT*) in the cohort studies despite the smaller number of cases in this group (Table 2a). Conversely, the strength of the association for loci at 11q23.3 (*PHLDB1*) and 9p21.3 (*CDKN2BAS*) was higher in case-control studies.

We further examined associations for previously reported loci by gender and tumor subtype (Tables 3 and 4). In analyses by gender, the signals at 8q24.21 (*CCDC26*) rs4295627 and 7p11.2 (*EGFR*) rs2252586 were stronger in women compared with men in our data (p-value for heterogeneity 0.0037 and 0.057, respectively). However, this effect modification by gender was not observed in the joint data from the UK, US-MDA, French and German replication groups. By tumor subtypes, the three regions most strongly associated with glioma risk overall at 5p15.33 (*TERT*), 9p21.3 (*CDKN2B*) and 20q13.33 (*RTEL*), were mainly associated with glioblastoma. Associations with the marker at 8q24.21 (*CCDC26*) appeared more pronounced for oligodendroglioma, while the signal at 11q23.3 (*PHLDB1*) was preferentially associated with low-grade glioma.

In addition to previously reported loci, we identified 85 previously unreported loci with associations of p -trend 4.0×10^{-4} after removing probable genotyping artifacts, known associations, and highly correlated SNP markers ($r^2 > 0.6$). We performed an *in silico* replication by a meta analysis with data from three previously reported GWAS studies which provided data on a total of 5,015 cases and 11,601 controls (Table 1) (Sanson et al. 2011; Shete et al. 2009; Wrensch et al. 2009). Summary measures (odds ratios and 95% confidence intervals) were obtained from each study, and a meta-analysis was performed using an inverse variance fixed effect model. However, none of these associations reached statistical significance at the genome-wide association level (Supplementary Table 2). A similar exercise was undertaken for 85 promising loci identified in combined data from the UK, US-MDA, French and German replication groups, but again, none of these associations reached statistical significance at $p < 5.0 \times 10^{-8}$ (Supplementary Table 3).

Discussion

In this study, we present the data from a new independent GWAS of glioma based on 1,856 cases and 4,955 controls. While we did not observe any novel locus that reached genome-wide significance, the new scan provides further evidence for confirmation of the established loci. Similar to previously published reports, we note that *TERT* rs2736100, *CDKN2B* rs4977756, and *RTEL1* rs6010620 were most strongly associated with glioblastoma, *CCDC26* rs4295627 with oligodendroglioma, and *PHLDB1* rs498872 with low-grade glioma (Egan et al. 2011; Jenkins et al. 2011; Simon et al. 2010). These results suggest different genetic etiologies for different subtypes of glioma, and underscore the importance of considering tumor heterogeneity in GWAS studies.

Although we observed differential associations for the two loci on 8q24.21 (*CCDC26*) and 7p11.2 (*EGFR*) by gender in our data, effect modification by gender was not observed for these loci in the joint data from the UK, US-MDA, French and German replication groups, suggesting that the observed gender differences in our data could have been due to chance. However, it will be important to re-examine potential effect modification by gender in larger datasets, along with consideration of potential risk covariates of interest such as allergy or smoking (Lachance et al. 2011; Schoemaker et al. 2010).

Previous GWAS of glioma were based on case-control studies only, which would generally not include rapidly fatal gliomas. One concern of results from these studies is that associations may be influenced by survival and therefore potentially bias toward glioma with longer survival. It is noteworthy that in our GWAS scan, the strength of the association was more pronounced for rs6010620 (20q,13.33; *RTEL*) and rs2736100 (5p15.33, *TERT*) in the cohort studies despite the smaller number of cases in this group. These regions have been particularly associated with high-grade glioma in other studies (Egan et al. 2011; Jenkins et al. 2011; Simon et al. 2010), and the differences in cohort versus case-control results in our scan likely reflects the fact that a higher proportion of highly fatal tumors (WHO Grade III and IV) were captured by the cohort studies as compared to the case-control studies. Similarly, stronger results for the *CCDC26* and *PHLDB1* variants in the case-control studies are consistent with previous associations of these loci with low-grade tumors. Nonetheless, overall results from GliomaScan, which comprised a large number of incident glioma from cohort studies, support GWAS associations based on previous case-control studies. Our data thus suggest that previously reported associations are generalizable to incident glioma cases.

Our study had adequate power to detect variants of moderate effect sizes for common allele frequencies. However we did not observe additional signals with *in silico* analysis in three previously reported scans totaling 5,015 cases and 11,601 controls. This suggests that the underlying architecture of genetic susceptibility to glioma may not include as large a proportion of common variants as has been seen for other cancers to date. Alternatively, the underlying heterogeneity of glioma may limit our ability to identify more highly significant variants. For example, recent advances in understanding of glioma subtypes (e.g. proneural, neural, mesenchymal) based on gene expression (2008; Phillips et al. 2006), somatic mutations (e.g. *IDHI*) (Yan et al. 2009) and global patterns of methylation (glioma CpG island methylator phenotype; G-CIMP) (Noussmehr et al. 2010) suggest there are important subgroups of glioma that may represent distinct pathological entities. Still, given the relatively small sizes of the glioma scans to date, and in order to comprehensively define the catalog of common variants associated with risk for glioma (Park et al. 2010), further genome-wide association studies will need to involve sufficiently large study populations along with analysis of tumor subtypes to assess these risks.

Materials and Methods

Study Participants

Studies participating in GliomaScan are described in Table 1, and comprise 1,856 glioma cases and 4,955 controls from 14 cohort studies, 3 case-control studies, and 1 community-based case-only study. Cases were newly diagnosed glioma [ICDO-3 codes 9380-9480 or equivalent], and controls were cancer-free at the time of glioma diagnosis. Cases and 2,429 newly genotyped controls (pre-QC) were scanned with the Illumina 660W chip. Newly genotyped controls for this project were selected in a 2:1 ratio, frequency matched on age, sex and race/ethnicity. GWAS data were already available on 2,591 controls and 12 cases from cohorts that had participated in the PANSCAN study (pancreatic cancer GWAS), CGEMS studies (Hunter et al. 2007; Landi et al. 2009; Yeager et al. 2007) and the NCI lung cancer GWAS (Landi et al. 2009). These were scanned with the commercial HumanHap 550 or HumanHap 610 Illumina SNP arrays.

Study Design

We conducted a new genome wide association scan of glioma (GliomaScan) to validate previously reported risk regions and to attempt to identify additional novel risk loci. Details of the 19 studies participating in GliomaScan are provided in Table 1. We evaluated 85 additional loci of potential interest by conducting a fixed-effects meta-analysis using *in silico* data from 3 previously reported genome wide association scans in a total of 5,015 cases and 11,601 controls (Sanson et al. 2011; Shete et al. 2009; Wrensch et al. 2009).

Genome-wide SNP Genotyping

All GliomaScan samples were genotyped at the NCI Core Genotyping Facility (CGF, Division of Cancer Epidemiology and Genetics (DCEG), National Cancer Institute, Bethesda, USA). Samples from the United Kingdom, MD Anderson Cancer Center, France and Germany were genotyped as described previously (Sanson et al. 2011; Shete et al. 2009; Wrensch et al. 2009). Summary estimates were provided from previously genotyped studies for the purpose of meta-analysis.

Quality Control Assessment

Genotyping was attempted for a total of 5,084 GliomaScan samples on Illumina 660W arrays at the CGF. After excluding 6 samples due to lab processing error, 5,078 samples remained (2,215 cases, 2,859 new controls and 4 QC samples). Genotype clusters were estimated with high performing samples having overall completion rates greater than 98%, and genotype calls for the rest of the samples were based on the clusters defined by the high performing samples only. Additionally, 2,591 previously scanned (on 550 or 610 chips) controls and 12 previously scanned individual cases from ATBC, CLUE, CPSII, HPFS, NHS, NYUWHS, PHS, PLCO, SMWHS and WHS were included.

SNP assays were excluded if they had less than 90% of completion rate, or had extreme deviation from fitness for Hardy-Weinberg proportion ($P < 1 \times 10^{-10}$). Participants were excluded based on: 1) completion rates lower than 94-96% as per the QC groups (n=420 samples); 2) abnormal heterozygosity values of less than 25% or greater than 35% (n=45) – some samples were excluded for both low completion rates and abnormal heterozygosity, and the total number of unique samples excluded for either criteria was 438; 3) unexpected duplicates (n=8 forming 4 pairs), and one sample that also failed due to low completion rate; 4) sex discordance between self reported and the imputed gender by X chromosome heterozygosity (n=9); 5) one sample from each unexpected inter-study duplicates (n=20) and 6) phenotype exclusions (due to ineligibility or incomplete information) (n=27). Utilizing a set of 12,000 un-linked SNPs (pair-wise $r^2 < 0.004$) common to all GWAS chips (Yu et al.

2008), 215 subjects with less than 80% European ancestry were excluded from downstream analyses based on STRUCTURE analysis (Falush 2007) and PCA (Price et al. 2006). For the planned 154 duplicate pairs, concordance was 99.96%.

The final participant count for the association analysis was 1,856 cases and 4,955 controls. 559,977 SNPs were available for analysis in one or more studies. Each participating study obtained informed consent from study participants and approval from its Institutional Review Board (IRB) for this study and obtained IRB certification permitting data sharing in accordance with the NIH Policy for Sharing of Data Obtained in NIH Supported or Conducted Genome-Wide Association Studies (GWAS). The dbGaP data portal provides access to individual level data from the NCI scan ONLY to investigators from certified scientific institutions after approval of their submitted Data Access Request.

Statistical analysis

The association between the 559,977 SNPs and risk of glioma was estimated by the odds ratio (OR) and 95% confidence interval (CI) using unconditional logistic regression assuming a trend effect genetic model with 1 degree of freedom. PCA analysis revealed seven significant ($p < 0.05$) eigenvectors when included in the NULL model (logistic regression with dummy variables for sex, age and study). The main effect model was adjusted by sex, age, study and seven eigenvectors. In addition to overall analyses of SNP associations, models were also examined by gender and stratified by the following tumor subtypes: glioblastoma (ICDO-3 codes 9440, 9441, 9442, 9443), oligodendroglioma/mixed glioma (ICDO-3 codes 9382, 9450, 9451, 9460), low grade glioma (grade I or II according to current WHO classifications), or high grade glioma (grade III or IV according to current WHO classifications)(2000; Louis et al. 2007). Top-ranked SNPs for further follow-up were selected based on the p-value for additive trend, after known hits and loci in high linkage disequilibrium (pairwise r^2 value > 0.6) were removed.

Meta-analysis

For the 85 loci of interest, each participating center provided the results of logistic regression analysis for individuals of European ancestry (CEU) adjusted for age and study-specific factors (e.g. study site). The following information was provided for each SNP: minor allele frequency (MAF), genotype counts for both cases and controls, risk allele, per allele odds ratio (OR), associated 95% confidence intervals, and the associated p-value of 1 degree freedom (df) test of the trend effect for the SNP. Summary estimates for each center were combined using a fixed effect metaanalysis.

Data Analysis

Data analysis and management was performed with GLU (Genotyping Library and Utilities version 1.0), PLINK and SAS® version 9.2 (Raleigh, NC, USA).

Supplementary Material

Refer to Web version on PubMed Central for supplementary material.

Acknowledgments

This research was supported by intramural funds from the NCI, NIH, Department of Health and Human Services, and has been funded in whole or in part with federal funds from the NCI, NIH, under contract N01-CO-12400. The content of this publication does not necessarily reflect the views or policies of the Department of Health and Human Services, nor does mention of trade names, commercial products, or organizations imply endorsement by the U.S. Government. We are indebted to the scientific and field efforts of Michelle Brotzman (Westat), Laurie Burdette,

Peter Hui (IMS), Annelie Landgren, Leah Mechanic, Lisa Newman (RTI), Aurelie Vogt, Tim Sheehy, Mitchel Berger Susan Chang, Mike Prados, Tarik Tihan, Ivan Smirnov and Lucie McCoy.

References

- ICD-O International Classification of Diseases for Oncology. Third Edition. World Health Organization; Geneva: 2000.
- Comprehensive genomic characterization defines human glioblastoma genes and core pathways. *Nature*. 2008; 455:1061–8. [PubMed: 18772890]
- Bondy ML, Scheurer ME, Malmer B, Barnholtz-Sloan JS, Davis FG, Il'yasova D, Kruchko C, McCarthy BJ, Rajaraman P, Schwartzbaum JA, Sadetzki S, Schlehofer B, Tihan T, Wiemels JL, Wrensch M, Buffler PA. Brain tumor epidemiology: consensus from the Brain Tumor Epidemiology Consortium. *Cancer*. 2008; 113:1953–68. [PubMed: 18798534]
- CBTRUS. CBTRUS Statistical Report: Primary Brain and Central Nervous System Tumors Diagnosed in the United States in 2004-2008. Central Brain Tumor Registry of the United States (CBTRUS); Chicago, Illinois: 2012.
- Egan KM, Thompson RC, Nabors LB, Olson JJ, Brat DJ, Larocca RV, Brem S, Moots PL, Madden MH, Browning JE, Ann Chen Y. Cancer susceptibility variants and the risk of adult glioma in a US case-control study. *J Neurooncol*. 2011
- Falush D, Stephens M, Pritchard JK. Inference of population structure using multilocus genotype data: dominant markers and null alleles. *Mol. Ecol. Notes*. 2007; 7:574–578. [PubMed: 18784791]
- Farrell CJ, Plotkin SR. Genetic causes of brain tumors: neurofibromatosis, tuberous sclerosis, von Hippel-Lindau, and other syndromes. *Neurol Clin*. 2007; 25:925–46. viii. [PubMed: 17964021]
- Hemminki K, Tretli S, Sundquist J, Johannesen TB, Granstrom C. Familial risks in nervous-system tumours: a histology-specific analysis from Sweden and Norway. *The lancet oncology*. 2009; 10:481–8. [PubMed: 19356978]
- Hunter DJ, Kraft P, Jacobs KB, Cox DG, Yeager M, Hankinson SE, Wacholder S, Wang Z, Welch R, Hutchinson A, Wang J, Yu K, Chatterjee N, Orr N, Willett WC, Colditz GA, Ziegler RG, Berg CD, Buys SS, McCarty CA, Feigelson HS, Calle EE, Thun MJ, Hayes RB, Tucker M, Gerhard DS, Fraumeni JF Jr, Hoover RN, Thomas G, Chanock SJ. A genome-wide association study identifies alleles in FGFR2 associated with risk of sporadic postmenopausal breast cancer. *Nature genetics*. 2007; 39:870–4. [PubMed: 17529973]
- Jenkins RB, Wrensch MR, Johnson D, Fridley BL, Decker PA, Xiao Y, Kollmeyer TM, Rynearson AL, Fink S, Rice T, McCoy LS, Halder C, Kosel ML, Giannini C, Tihan T, O'Neill BP, Lachance DH, Yang P, Wiemels J, Wiencke JK. Distinct germ line polymorphisms underlie glioma morphologic heterogeneity. *Cancer genetics*. 2011; 204:13–8. [PubMed: 21356187]
- Kohler BA, Ward E, McCarthy BJ, Schymura MJ, Ries LA, Ehemann C, Jemal A, Anderson RN, Ajani UA, Edwards BK. Annual report to the nation on the status of cancer, 1975-2007, featuring tumors of the brain and other nervous system. *J Natl Cancer Inst*. 2011; 103:714–36. [PubMed: 21454908]
- Lachance DH, Yang P, Johnson DR, Decker PA, Kollmeyer TM, McCoy LS, Rice T, Xiao Y, Ali-Osman F, Wang F, Stoddard SM, Sprau DJ, Kosel ML, Wiencke JK, Wiemels JL, Patoka JS, Davis F, McCarthy B, Rynearson AL, Worra JB, Fridley BL, O'Neill BP, Buckner JC, Il'yasova D, Jenkins RB, Wrensch MR. Associations of high-grade glioma with glioma risk alleles and histories of allergy and smoking. *American journal of epidemiology*. 2011; 174:574–81. [PubMed: 21742680]
- Landi MT, Chatterjee N, Yu K, Goldin LR, Goldstein AM, Rotunno M, Mirabello L, Jacobs K, Wheeler W, Yeager M, Bergen AW, Li Q, Consonni D, Pesatori AC, Wacholder S, Thun M, Diver R, Oken M, Virtamo J, Albanes D, Wang Z, Burdette L, Doheny KF, Pugh EW, Laurie C, Brennan P, Hung R, Gaborieau V, McKay JD, Lathrop M, McLaughlin J, Wang Y, Tsao MS, Spitz MR, Krokkan H, Vatten L, Skorpen F, Arnesen E, Benhamou S, Bouchard C, Metspalu A, Vooder T, Nelis M, Valk K, Field JK, Chen C, Goodman G, Sulem P, Thorleifsson G, Rafnar T, Eisen T, Sauter W, Rosenberger A, Bickeboller H, Risch A, Chang-Claude J, Wichmann HE, Stefansson K, Houlston R, Amos CI, Fraumeni JF Jr, Savage SA, Bertazzi PA, Tucker MA, Chanock S, Caporaso NE. A genome-wide association study of lung cancer identifies a region of

chromosome 5p15 associated with risk for adenocarcinoma. *American journal of human genetics*. 2009; 85:679–91. [PubMed: 19836008]

- Louis, DN.; Ohgaki, H.; Wiestler, OD.; Cavanee, WK. WHO Classification of Tumors of the Central Nervous System. IARC Press; Lyons: 2007.
- Malmer B, Henriksson R, Gronberg H. Familial brain tumours-genetics or environment? A nationwide cohort study of cancer risk in spouses and firstdegree relatives of brain tumour patients. *Int J Cancer*. 2003; 106:260–3. [PubMed: 12800203]
- Noushmehr H, Weisenberger DJ, Diefes K, Phillips HS, Pujara K, Berman BP, Pan F, Pelloski CE, Sulman EP, Bhat KP, Verhaak RG, Hoadley KA, Hayes DN, Perou CM, Schmidt HK, Ding L, Wilson RK, Van Den Berg D, Shen H, Bengtsson H, Neuvial P, Cope LM, Buckley J, Herman JG, Baylin SB, Laird PW, Aldape K. Identification of a CpG island methylator phenotype that defines a distinct subgroup of glioma. *Cancer cell*. 2010; 17:510–22. [PubMed: 20399149]
- Park JH, Wacholder S, Gail MH, Peters U, Jacobs KB, Chanock SJ, Chatterjee N. Estimation of effect size distribution from genome-wide association studies and implications for future discoveries. *Nature genetics*. 2010; 42:570–5. [PubMed: 20562874]
- Phillips HS, Kharbanda S, Chen R, Forrest WF, Soriano RH, Wu TD, Misra A, Nigro JM, Colman H, Soroceanu L, Williams PM, Modrusan Z, Feuerstein BG, Aldape K. Molecular subclasses of high-grade glioma predict prognosis, delineate a pattern of disease progression, and resemble stages in neurogenesis. *Cancer cell*. 2006; 9:157–73. [PubMed: 16530701]
- Price AL, Patterson NJ, Plenge RM, Weinblatt ME, Shadick NA, Reich D. Principal components analysis corrects for stratification in genome-wide association studies. *Nat Genet*. 2006; 38:904–9. [PubMed: 16862161]
- Sanson M, Hosking FJ, Shete S, Zelenika D, Dobbins SE, Ma Y, Enciso-Mora V, Idbaih A, Delattre JY, Hoang-Xuan K, Marie Y, Boisselier B, Carpentier C, Wang XW, Di Stefano AL, Labussiere M, Gousias K, Schramm J, Boland A, Lechner D, Gut I, Armstrong G, Liu Y, Yu R, Lau C, Di Bernardo MC, Robertson LB, Muir K, Hepworth S, Swerdlow A, Schoemaker MJ, Wichmann HE, Muller M, Schreiber S, Franke A, Moebus S, Eisele L, Forsti A, Hemminki K, Lathrop M, Bondy M, Houlston RS, Simon M. Chromosome 7p11.2 (EGFR) variation influences glioma risk. *Hum Mol Genet*. 2011; 20:2897–904. [PubMed: 21531791]
- Scheurer ME, Etzel CJ, Liu M, El-Zein R, Airewele GE, Malmer B, Aldape KD, Weinberg JS, Yung WK, Bondy ML. Aggregation of cancer in first-degree relatives of patients with glioma. *Cancer Epidemiol Biomarkers Prev*. 2007; 16:2491–5. [PubMed: 18006942]
- Schoemaker MJ, Robertson L, Wigertz A, Jones ME, Hosking FJ, Feychting M, Lonn S, McKinney PA, Hepworth SJ, Muir KR, Auvinen A, Salminen T, Kiuru A, Johansen C, Houlston RS, Swerdlow AJ. Interaction between 5 genetic variants and allergy in glioma risk. *American journal of epidemiology*. 2010; 171:1165–73. [PubMed: 20462933]
- Shete S, Hosking FJ, Robertson LB, Dobbins SE, Sanson M, Malmer B, Simon M, Marie Y, Boisselier B, Delattre JY, Hoang-Xuan K, El Hallani S, Idbaih A, Zelenika D, Andersson U, Henriksson R, Bergenheim AT, Feychting M, Lonn S, Ahlbom A, Schramm J, Linnebank M, Hemminki K, Kumar R, Hepworth SJ, Price A, Armstrong G, Liu Y, Gu X, Yu R, Lau C, Schoemaker M, Muir K, Swerdlow A, Lathrop M, Bondy M, Houlston RS. Genome-wide association study identifies five susceptibility loci for glioma. *Nat Genet*. 2009; 41:899–904. [PubMed: 19578367]
- Simon M, Hosking FJ, Marie Y, Gousias K, Boisselier B, Carpentier C, Schramm J, Mokhtari K, Hoang-Xuan K, Idbaih A, Delattre JY, Lathrop M, Robertson LB, Houlston RS, Sanson M. Genetic risk profiles identify different molecular etiologies for glioma. *Clin Cancer Res*. 2010; 16:5252–9. [PubMed: 20847058]
- Stacey SN, Sulem P, Jonasdottir A, Masson G, Gudmundsson J, Gudbjartsson DF, Magnusson OT, Gudjonsson SA, Sigurgeirsson B, Thorisdottir K, Ragnarsson R, Benediksdottir KR, Nexo BA, Tjonneland A, Overvad K, Rudnai P, Gurdau E, Koppova K, Hemminki K, Corredera C, Fuentelsaz V, Grasa P, Navarrete S, Fuertes F, Garcia-Prats MD, Sanambrosio E, Panadero A, De Juan A, Garcia A, Rivera F, Planelles D, Soriano V, Requena C, Aben KK, van Rossum MM, Cremers RG, van Oort IM, van Spronsen DJ, Schalken JA, Peters WH, Helfand BT, Donovan JL, Hamdy FC, Badescu D, Codreanu O, Jinga M, Csiki IE, Constantinescu V, Badea P, Mates IN, Dinu DE, Constantin A, Mates D, Kristjansdottir S, Agnarsson BA, Jonsson E, Barkardottir RB, Einarsson GV, Sigurdsson F, Moller PH, Stefansson T, Valdimarsson T, Johannsson OT,

Sigurdsson H, Jonsson T, Jonasson JG, Tryggvadottir L, Rice T, Hansen HM, Xiao Y, Lachance DH, BP ON, Kosel ML, Decker PA, Thorleifsson G, Johannsdottir H, Helgadottir HT, Sigurdsson A, Steinthorsdottir V, Lindblom A, Sandler RS, Keku TO, Banasik K, Jorgensen T, Witte DR, Hansen T, Pedersen O, Jinga V, Neal DE, Catalona WJ, Wrensch M, Wiencke J, Jenkins RB, Nagore E, Vogel U, Kiemeny LA, Kumar R, Mayordomo JI, Olafsson JH, Kong A, et al. A germline variant in the TP53 polyadenylation signal confers cancer susceptibility. *Nature genetics*. 2011; 43:1098–103. [PubMed: 21946351]

Wrensch M, Jenkins RB, Chang JS, Yeh RF, Xiao Y, Decker PA, Ballman KV, Berger M, Buckner JC, Chang S, Giannini C, Halder C, Kollmeyer TM, Kosel ML, LaChance DH, McCoy L, O'Neill BP, Patoka J, Pico AR, Prados M, Quesenberry C, Rice T, Rynearson AL, Smirnov I, Tihan T, Wiemels J, Yang P, Wiencke JK. Variants in the CDKN2B and RTEL1 regions are associated with high-grade glioma susceptibility. *Nat Genet*. 2009; 41:905–8. [PubMed: 19578366]

Wrensch M, Lee M, Miike R, Newman B, Barger G, Davis R, Wiencke J, Neuhaus J. Familial and personal medical history of cancer and nervous system 29 conditions among adults with glioma and controls. *Am J Epidemiol*. 1997; 145:581–93. [PubMed: 9098174]

Yan H, Parsons DW, Jin G, McLendon R, Rasheed BA, Yuan W, Kos I, Batinic-Haberle I, Jones S, Riggins GJ, Friedman H, Friedman A, Reardon D, Herndon J, Kinzler KW, Velculescu VE, Vogelstein B, Bigner DD. IDH1 and IDH2 mutations in gliomas. *The New England journal of medicine*. 2009; 360:765–73. [PubMed: 19228619]

Yeager M, Orr N, Hayes RB, Jacobs KB, Kraft P, Wacholder S, Minichiello MJ, Fearnhead P, Yu K, Chatterjee N, Wang Z, Welch R, Staats BJ, Calle EE, Feigelson HS, Thun MJ, Rodriguez C, Albanes D, Virtamo J, Weinstein S, Schumacher FR, Giovannucci E, Willett WC, Cancel-Tassin G, Cussenot O, Valeri A, Andriole GL, Gelmann EP, Tucker M, Gerhard DS, Fraumeni JF Jr, Hoover R, Hunter DJ, Chanock SJ, Thomas G. Genome-wide association study of prostate cancer identifies a second risk locus at 8q24. *Nature genetics*. 2007; 39:645–9. [PubMed: 17401363]

Yu K, Wang Z, Li Q, Wacholder S, Hunter DJ, Hoover RN, Chanock S, Thomas G. Population substructure and control selection in genome-wide association studies. *PLoS ONE*. 2008; 3:e2551. [PubMed: 18596976]

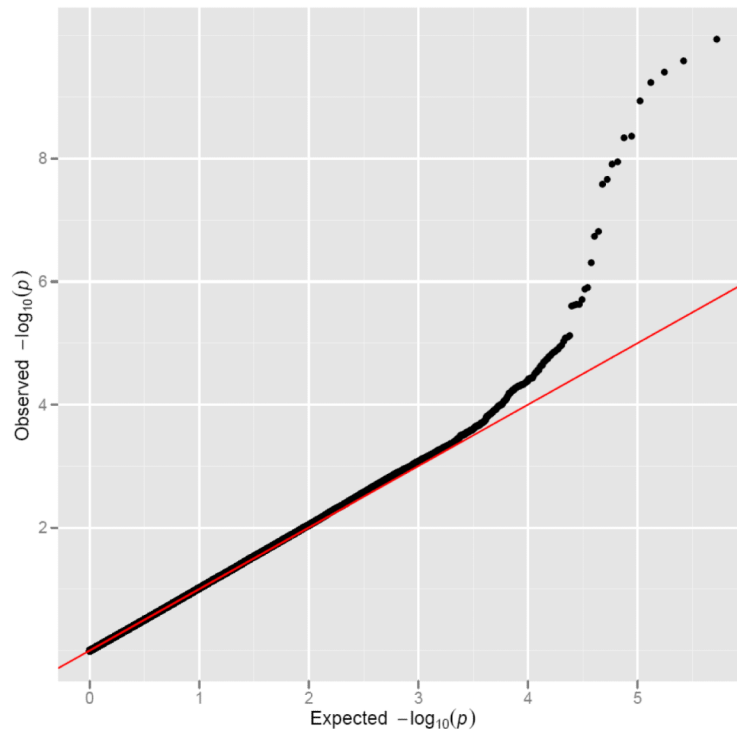


Figure 1. Quantile-Quantile (Q-Q) plot of observed versus expected P values in the Glioma GWAS

The analysis was adjusted by sex, age, study and seven eigenvectors.

The genomic control lambda is 1.006.

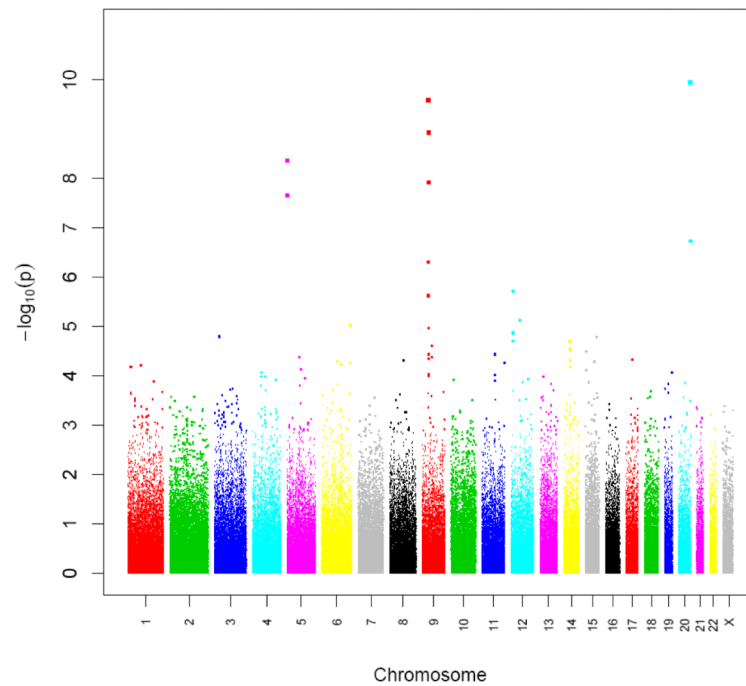


Figure 2. Manhattan Plot of the association results

Chromosomal locations of P -values derived from 1-df trend tests from logistic regression model adjusted for study sites, age, gender, and 7 eigenvectors on 1,856 cases and 4,955 controls.

Table 1
 Studies included in the GliomaScan genome-wide association study (GWAS) and replication meta-analysis

Study	Study Acronym	Study Type	Control Selection	Platform used for genotyping among controls	Cases in Analysis	Controls in Analysis	Study Period (Recruitment)	Location	Mean age at diagnosis, years (cases)	% Male (study)
GLIOMASCAN										
Agricultural Health Study	AHS	Cohort	Frequency-matched 2:1 by year of birth, sex, race	Illumina 660W	18	35	1993-1997	USA (IA, NC)	57.22	60.38
Alpha-Tocopherol Beta-Carotene Cancer Prevention Study	ATBC	Cohort	Glioma-free controls with previous GWAS data	Illumina 610Q	37	1270	1985-1993	Finland	69.27	100
CLUE I-Campaign Against Cancer and Stroke; CLUE II-Cancer and Heart Disease	CLUE	Cohort	Glioma-free controls with previous GWAS data	Illumina 550K	36	71	1974-1989	USA (MD)	65.00	46.73
Cancer Prevention Study II Nutrition Cohort	CPS-II	Cohort	Glioma-free controls with previous GWAS data	Illumina 550K	54	98	1992	USA (21 states)	72.96	57.24
Cohort of Swedish Men/Swedish Mammography Cohort	CoSM/SMC	Cohort	Swedish glioma-free controls matched on age, sex, race	Illumina 660W	0	0	1997/1987-90	Sweden	n/a	n/a
Gliogene (Sweden)	GLIOGENE	Case only	Swedish glioma-free controls from NSHDS matched on age, sex, race	Illumina 660W	401	0	2004-2011	USA, UK, Sweden, Denmark, Israel.	54.10	60.01
Health Professionals Follow-up Study	HPFS	Cohort	Glioma-free controls with previous GWAS data	Illumina 550K	26	52	1986	US (most states)	68.08	100
Interphone Study (Sweden, Denmark)	INT-SD	Case-control	Matched on year of birth, sex, study region	Illumina 660W	277	381	2000-2004	Sweden, Denmark	49.52	56.53
Melbourne Collaborative Cohort Study	MCCS	Cohort	Matched on year of birth, sex, study region	Illumina 550K	40	75	1990-1994	Australia	67.95	51.30
Multiethnic Cohort	MEC	Cohort	Matched on age, sex, race	Illumina 550K	2	6	1993	USA	73.50	75.00

Study	Study Acronym	Study Type	Control Selection	Platform used for genotyping among controls	Cases in Analysis	Controls in Analysis	Study Period (Recruitment)	Location	Mean age at diagnosis, years (cases)	% Male (study)
National Cancer Institute Adult Brain Study	NCL-BTS	Case-control	Frequency-matched 2:1 by hospital, age, sex, race, residential distance from hospital	Illumina 660W	322	385	1994-1998	USA (AZ, MA, PA)	51.50	48.94
Nurses' Health Study I and II	NHS	Cohort	Glioma-free controls with previous GWAS data	Illumina 550K	38	83	1976/1989	USA (11/14 States)	66.95	0
Upper Midwest Health Study – National Institute for Occupational Safety and Health	NIOSH-UMHS	Case-control	Population-based controls frequency matched 1.5:1 by age, sex, state	Illumina 660W	300	542	1995-1997	USA (IA, MI, MN, WI)	48.68	56.06
Northern Sweden Health and Disease Study	NSHDS	Cohort	Matched on age, sex, race	Illumina 660W	111	934	1985 - ongoing	Northern Sweden	52.14	53.98
New York University – Women's Health Study	NYUWHS	Cohort	Glioma-free controls with previous GWAS data	Illumina 550K	5	12	1985 - 1991	USA (NY)	65.4	0
Physician's Health Study I and II	PHS	Cohort	Glioma-free controls with previous GWAS data	Illumina 550K	16	54	1982 – 1984, 1997 – 2001	USA (several states)	71.13	100
Prostate, Lung, Colorectal and Ovarian Screening Trial	PLCO	Cohort	Glioma-free controls with previous GWAS data	Illumina 550K	132	855	1992-2001	USA (several states)	71.19	58.67
Shanghai Men's and Women's Health Study	SMWHS	Cohort	Glioma-free controls with previous GWAS data	Illumina 550K	(39)*	(79)*	1996-2000 (women), 2001-2006 (men)	China (urban communities in Shanghai)	59.08	24.58
Vitamins and Lifestyle	VITAL	Cohort	Matched on age, sex, race, time to diagnosis	Illumina 660W	33	71	2000-2002	USA (WA)	68.48	60.58
Women's Health Study	WHS	Cohort	Glioma-free controls with previous GWAS data	Illumina 550K	8	31	1991-2009	USA (several states)	58.25	0
REPLICATION STUDIES										
French Glioma Collection (cases only)	FGC SU.VI.MAX	Case-control	Recruited from across France	Illumina 610Q	1,423	1,190		France		

Study	Study Acronym	Study Type	Control Selection	Platform used for genotyping among controls	Cases in Analysis	Controls in Analysis	Study Period (Recruitment)	Location	Mean age at diagnosis, years (cases)	% Male (study)
Supplementation en Vitamines et Minéraux Antioxydants study (controls only)										
German Glioma Collection, ascertained from the Department of Neurosurgery, University of Bonn Medical Center	GGC	Case-control	Health individuals recruited by the Institute of Transfusion Medicine and Immunology, Mannheim	Illumina 610Q	846	1,310		Germany		
Mayo Clinic	MAYO	Case-control	Clinic-based controls matched on sex, date of birth, race, residence	Illumina 610Q	176	174		USA (MN)		
San Francisco Adult Glioma Study (cases and controls) The Cancer Genome Atlas (cases only) Illumina controls (controls only)	AGS TCGA iControls	Case-control	AGS controls were from the same residential area as cases and were frequency matched on age, sex, and ancestry	Illumina 370D	692	3,992		USA (CA)		
University of Texas M.D. Anderson Cancer Center (Cases only) Cancer Genetics Markers of Susceptibility studies (controls only)	CGEMS	Case-control		Illumina 610Q	1,247	2,236		USA (TX)		
UK INTERPHONE (cases only) 1958 Birth Cohort (controls only)		Case-control		Illumina 610Q	631	2,699		UK		

* Excluded from main analysis due to <80% European ancestry

Table 2

Risk estimates for Glioma for previously reported Glioma GWAS signals

LOCUS	CHROM	LOCATION	GENE	CYTOBAND	Allele Ref Other	Other Allele Freq (control case)	Controls Cases	OR ¹	95% LCI	95% UCI	score p-value
rs2736100	5	1339516	TERT	5p15.33	G T	0.506 0.437	4949 1854	0.772	0.708	0.842	4.28E-09
rs11979158	7	55126843	EGFR	7p11.2	A G	0.190 0.157	4952 1855	0.866	0.771	0.973	1.52E-02
rs2252586	7	54946418	EGFR	7p11.2	G A	0.268 0.310	4954 1854	1.154	1.051	1.268	2.69E-03
rs4295627	8	130754639	CCDC26	8q24.21	T G	0.200 0.215	4952 1855	1.137	1.022	1.265	1.87E-02
rs4977756	9	22058652	CDKN2BAS	9p21.3	A G	0.423 0.481	4951 1852	1.283	1.177	1.398	1.21E-08
rs1412829	9	22033926	CDKN2BAS	9p21.3	T C	0.444 0.503	4943 1853	1.278	1.172	1.393	2.62E-08
rs498872	11	117982577	ARCNI1,PHLDB1	11q23.3	C T	0.314 0.329	4951 1852	1.058	0.965	1.160	2.30E-01
rs6010620	20	61780283	RTEL1,TNFRSF6B	20q13.33	G A	0.229 0.175	4954 1856	0.701	0.629	0.781	1.13E-10
rs4809324	20	61788664	RTEL1,TNFRSF6B	20q13.33	T C	0.106 0.129	4952 1850	1.127	0.989	1.285	7.36E-02

¹ per-allele odds ratio. Models adjusted for sex, age, study and seven eigenvectors

Table 2a
Risk estimates for Glioma for previously reported Glioma GWAS signals, separately for cohort studies and case-control studies

LOCUS	CHR	GENE	Allele Ref/Other	COHORT						CASE-CONT					
				Controls Cases	OR	95% LCI	95% UCI	score p- value	Controls Cases	OR	95% LCI	95% UCI	score p- value		
rs2736100	5	TERT	G T	2936 543	0.70	0.61	0.81	2.35E-06	2013 1299	0.82	0.74	0.92	3.71E-04		
rs11979158	7	EGFR	A G	2939 544	0.85	0.70	1.03	1.04E-01	2013 1299	0.87	0.75	1.00	5.64E-02		
rs2252586	7	EGFR	G A	2939 544	1.35	1.15	1.57	1.69E-04	2015 1298	1.05	0.93	1.18	4.59E-01		
rs4295627	8	CCDC26	T G	2939 543	1.05	0.88	1.26	5.88E-01	2013 1300	1.20	1.04	1.37	9.73E-03		
rs4977756	9	CDKN2BAS	A G	2939 544	1.30	1.12	1.49	3.48E-04	2012 1296	1.29	1.15	1.44	5.80E-06		
rs1412829	9	CDKN2BAS	T C	2934 543	1.32	1.15	1.53	1.11E-04	2009 1298	1.26	1.13	1.41	3.73E-05		
rs498872	11	ARCN1,PHLDB1	C T	2938 542	0.94	0.80	1.10	4.30E-01	2013 1298	1.14	1.02	1.29	2.44E-02		
rs6010620	20	RTEL1,TNFRSF6B	G A	2939 544	0.58	0.48	0.71	1.80E-08	2015 1300	0.80	0.70	0.91	1.08E-03		
rs4809324	20	RTEL1,TNFRSF6B	T C	2939 543	1.15	0.92	1.42	2.22E-01	2013 1295	1.10	0.93	1.30	2.53E-01		

/ per-allele odds ratio. Models adjusted for sex, age, study and seven eigenvectors

Table 3
Risk estimates for Glioma for previously reported Glioma GWAS signals by gender

Locus	Gene	Alleles (Ref Other)	MALE						FEMALE						
			Other Allele Freq (Cntrl Case)	Subjects (Cntrl Case)	score p-value	OR	95% LCI	95% UCI	Other Allele Freq (Cntrl Case)	Subjects (Cntrl Case)	score p-value	OR	95% LCI	95% UCI	P het
rs2736100	TERT	G T	0.506 0.436	3258 1063	1.33E-05	0.774	0.689	0.869	0.506 0.438	1691 791	6.38E-05	0.766	0.671	0.873	9.04E-01
rs11979158	EGFR	A G	0.193 0.155	3261 1063	8.06E-02	0.870	0.744	1.017	0.184 0.161	1691 792	8.46E-02	0.858	0.721	1.021	9.10E-01
rs2252586	EGFR	G A	0.269 0.310	3261 1062	2.77E-01	1.071	0.946	1.213	0.265 0.310	1693 792	5.84E-04	1.288	1.115	1.489	5.76E-02
rs4295627	CCDC26	T G	0.205 0.197	3260 1064	8.96E-01	0.990	0.857	1.145	0.191 0.240	1692 791	1.46E-04	1.365	1.162	1.604	3.70E-03
rs4977756	CDKN2BAS	A G	0.422 0.484	3258 1061	1.17E-05	1.292	1.152	1.449	0.425 0.477	1693 791	1.44E-04	1.288	1.130	1.467	9.71E-01
rs1412829	CDKN2BAS	T C	0.444 0.502	3255 1062	8.03E-05	1.259	1.123	1.413	0.445 0.504	1688 791	4.45E-05	1.316	1.153	1.502	6.22E-01
rs498872	ARCN1,PHL DB1	C T	0.319 0.330	3261 1061	4.42E-01	1.049	0.928	1.186	0.304 0.326	1690 791	3.38E-01	1.071	0.931	1.232	8.29E-01
rs6010620	RTEL1,TNFR SF6B	G A	0.221 0.170	3261 1064	4.66E-07	0.687	0.594	0.796	0.245 0.182	1693 792	5.26E-05	0.717	0.610	0.843	7.04E-01
rs4809324	RTEL1,TNFR SF6B	T C	0.102 0.128	3261 1059	2.97E-01	1.099	0.920	1.313	0.113 0.130	1691 791	1.27E-01	1.165	0.957	1.416	6.68E-01

Models adjusted for sex, age, study and seven eigenvectors

Table 4

Risk estimates for Glioma for previously reported Glioma GWAS signals by tumor subtype

Subtype	Locus	Gene	Alleles (Ref Other)	Other Allele Freq (Contr Case)	Subjects (Contr Cases)	score p-value	OR	95% LCI	95% UCI
Glioblastoma									
	rs2736100	TERT	G T	0.506 0.416	4949 970	1.82E-10	0.700	0.627	0.781
	rs11979158	EGFR	A G	0.190 0.136	4952 970	4.33E-04	0.760	0.652	0.886
	rs2252586	EGFR	G A	0.268 0.317	4954 969	2.62E-03	1.198	1.065	1.347
	rs4295627	CCDC26	T G	0.200 0.200	4952 971	2.30E-01	1.087	0.948	1.247
	rs4977756	CDKN2BAS	A G	0.423 0.508	4951 969	1.93E-10	1.418	1.273	1.580
	rs1412829	CDKN2BAS	T C	0.444 0.523	4943 969	1.31E-08	1.371	1.229	1.529
	rs498872	ARCN1,PHLDB1	C T	0.314 0.291	4951 969	1.32E-01	0.913	0.811	1.028
	rs6010620	RTEL1,TNFRSF6B	G A	0.229 0.173	4954 971	2.43E-07	0.696	0.606	0.799
	rs4809324	RTEL1,TNFRSF6B	T C	0.106 0.138	4952 968	2.38E-02	1.205	1.025	1.416
Oligodendroglioma									
	rs2736100	TERT	G T	0.502 0.442	2131 248	2.45E-02	0.802	0.661	0.972
	rs11979158	EGFR	A G	0.181 0.169	2132 248	6.16E-01	0.937	0.727	1.208
	rs2252586	EGFR	G A	0.274 0.317	2134 248	1.69E-01	1.157	0.940	1.426
	rs4295627	CCDC26	T G	0.196 0.270	2133 248	1.88E-04	1.533	1.223	1.922
	rs4977756	CDKN2BAS	A G	0.428 0.444	2132 248	4.14E-01	1.083	0.895	1.311
	rs1412829	CDKN2BAS	T C	0.456 0.468	2128 247	4.45E-01	1.078	0.888	1.309
	rs498872	ARCN1,PHLDB1	C T	0.311 0.381	2132 248	1.07E-03	1.396	1.142	1.707
	rs6010620	RTEL1,TNFRSF6B	G A	0.237 0.188	2134 248	2.99E-02	0.766	0.601	0.975
	rs4809324	RTEL1,TNFRSF6B	T C	0.114 0.098	2132 246	2.28E-01	0.818	0.590	1.135
Other									
	rs2736100	TERT	G T	0.505 0.489	4195 223	7.29E-01	0.966	0.794	1.175
	rs11979158	EGFR	A G	0.189 0.193	4197 223	4.44E-01	1.102	0.860	1.411
	rs2252586	EGFR	G A	0.271 0.314	4199 223	2.05E-01	1.147	0.928	1.420
	rs4295627	CCDC26	T G	0.202 0.236	4198 222	2.29E-02	1.313	1.038	1.660
	rs4977756	CDKN2BAS	A G	0.423 0.464	4196 221	6.17E-02	1.205	0.991	1.467
	rs1412829	CDKN2BAS	T C	0.446 0.498	4189 223	1.86E-02	1.267	1.040	1.543
	rs498872	ARCN1,PHLDB1	C T	0.315 0.363	4196 222	2.85E-02	1.261	1.024	1.552
	rs6010620	RTEL1,TNFRSF6B	G A	0.229 0.211	4200 223	4.06E-01	0.904	0.712	1.147
	rs4809324	RTEL1,TNFRSF6B	T C	0.107 0.113	4198 222	8.89E-01	1.023	0.747	1.400
Low grade glioma									
	rs2736100	TERT	G T	0.502 0.463	2131 337	1.19E-01	0.871	0.733	1.036
	rs11979158	EGFR	A G	0.181 0.175	2132 337	5.62E-01	0.935	0.745	1.174
	rs2252586	EGFR	G A	0.274 0.282	2134 337	8.77E-01	0.985	0.814	1.192
	rs4295627	CCDC26	T G	0.196 0.236	2133 337	8.05E-02	1.206	0.977	1.488
	rs4977756	CDKN2BAS	A G	0.428 0.444	2132 337	5.83E-01	1.049	0.884	1.244
	rs1412829	CDKN2BAS	T C	0.456 0.467	2128 336	6.01E-01	1.047	0.881	1.245
	rs498872	ARCN1,PHLDB1	C T	0.311 0.374	2132 337	1.19E-03	1.349	1.125	1.617

Subtype	Locus	Gene	Alleles (Ref Other)	Other Allele Freq (Contr Case)	Subjects (Contr Cases)	score p-value	OR	95% LCI	95% UCI
High grade glioma	rs6010620	RTEL1,TNFRSF6B	G A	0.237 0.191	2134 337	2.97E-02	0.786	0.633	0.977
	rs4809324	RTEL1,TNFRSF6B	T C	0.114 0.108	2132 337	5.79E-01	0.924	0.699	1.222
	rs2736100	TERT	G T	0.506 0.422	4949 1181	2.29E-10	0.720	0.650	0.797
	rs11979158	EGFR	A G	0.190 0.141	4952 1182	4.84E-04	0.779	0.677	0.897
	rs2252586	EGFR	G A	0.268 0.318	4954 1181	1.78E-03	1.190	1.067	1.328
	rs4295627	CCDC26	T G	0.200 0.206	4952 1183	1.11E-01	1.108	0.977	1.257
	rs4977756	CDKN2BAS	A G	0.423 0.497	4951 1181	5.19E-09	1.347	1.218	1.489
	rs1412829	CDKN2BAS	T C	0.444 0.516	4943 1181	2.47E-08	1.333	1.205	1.475
	rs498872	ARCN1,PHLDB1	C T	0.314 0.309	4951 1180	8.27E-01	0.988	0.886	1.101
	rs6010620	RTEL1,TNFRSF6B	G A	0.229 0.166	4954 1183	3.56E-10	0.662	0.582	0.754
rs4809324	RTEL1,TNFRSF6B	T C	0.106 0.137	4952 1178	2.27E-02	1.191	1.025	1.384	

* Models adjusted by sex, age, study and seven eigenvectors. Subjects with age > 80 were excluded from OTHER subtype analysis; Subjects with age > 70 were excluded from both OLIGO and LO-GR analyses