



Association between pre-hospital vitamin D status and hospital-acquired new-onset delirium

The Harvard community has made this article openly available. [Please share](#) how this access benefits you. Your story matters

Citation	Quraishi, Sadeq A., Augusto A. Litonjua, Kevin M. Elias, Fiona K. Gibbons, Edward Giovannucci, Carlos A. Camargo Jr, and Kenneth B. Christopher. 2015. "Association between Pre-Hospital Vitamin D Status and Hospital-Acquired New-Onset Delirium." <i>British Journal of Nutrition</i> 113 (11): 1753–60. https://doi.org/10.1017/s0007114515001245 .
Citable link	http://nrs.harvard.edu/urn-3:HUL.InstRepos:41392057
Terms of Use	This article was downloaded from Harvard University's DASH repository, and is made available under the terms and conditions applicable to Open Access Policy Articles, as set forth at http://nrs.harvard.edu/urn-3:HUL.InstRepos:dash.current.terms-of-use#OAP



Published in final edited form as:

Br J Nutr. 2015 June 14; 113(11): 1753–1760. doi:10.1017/S0007114515001245.

Association between pre-hospital vitamin D status and hospital-acquired new-onset delirium

Sadeq A. Quraishi^{1,2}, Augusto A. Litonjua^{3,4}, Kevin M. Elias⁵, Fiona K. Gibbons^{3,6}, Edward Giovannucci^{7,8}, Carlos A. Camargo Jr^{3,8,9}, and Kenneth B. Christopher^{3,10,*}

¹Department of Anaesthesia, Harvard Medical School, Boston, MA, USA

²Department of Anesthesia, Critical Care and Pain Medicine, Massachusetts General Hospital, Boston, MA, USA

³Department of Medicine, Harvard Medical School, Boston, MA, USA

⁴Channing Division of Network Medicine and Pulmonary and Critical Care Division, Department of Medicine, Brigham and Women's Hospital, Boston, MA, USA

⁵Department of Obstetrics and Gynecology, Brigham and Women's Hospital, Boston, MA, USA

⁶Division of Pulmonary and Critical Care Medicine, Department of Medicine, Massachusetts General Hospital, Boston, MA, USA

⁷Department of Nutrition, Harvard School of Public Health, Boston, MA, USA

⁸Department of Epidemiology, Harvard School of Public Health, Boston, MA, USA

⁹Department of Emergency Medicine, Massachusetts General Hospital, Boston, MA, USA

¹⁰The Nathan E. Hellman Memorial Laboratory, Renal Division, Department of Medicine, Brigham and Women's Hospital, 75 Francis Street, MRB 418, Boston, MA 02115, USA

Abstract

The goal of the present study was to determine whether pre-hospital 25-hydroxyvitamin D (25(OH)D) levels are associated with the risk of hospital-acquired new-onset delirium (HANOD). We performed a retrospective cohort study of 4508 adult inpatients at two teaching hospitals in Boston from 1993 to 2006. All patients had 25(OH)D levels measured before hospital admission. The main outcome measure was HANOD, defined as the onset of delirium during an acute care hospitalisation. Patients with a history of delirium or dementia, or those with a diagnosis of delirium or dementia upon acute care hospitalisation were excluded from the analysis. To test the association of pre-hospital 25(OH)D levels with HANOD, we constructed a multivariable logistic regression model to adjust for clinically relevant covariates. Among our patient cohort, the mean 25(OH)D level was 22 (SD 13) ng/ml and approximately 4 % of patients met the criteria for

* **Corresponding author:** K. B. Christopher, fax + 1 617 726 3032, kbchristopher@partners.org.

The authors declare that there are no conflicts of interest.

The authors' contributions are as follows: S. A. Q. and K. B. C. jointly conceived the study as well as designed and implemented the analysis with assistance from C. A. C.; K. B. C. and K. M. E. assembled the input data, wrote the code, ran the model and analysed the output data; S. A. Q., C. A. C. and K. B. C. wrote the manuscript; S. A. Q., A. A. L., K. M. E., F. K. G., E. G., C. A. C. and K. B. C. edited the manuscript and provided conceptual advice.

HANOD. Following adjustment for age, sex, race (non-white *v.* white), patient type (medical *v.* surgical) and Deyo–Charlson Index, patients with 25(OH)D levels ≥ 10 , 10–19.9 and 20–29.9 ng/ml had higher odds of HANOD than patients with 25(OH)D levels < 10 ng/ml: OR 2.15 (95 % CI 1.32, 3.50), OR 1.54 (95 % CI 0.98, 2.43) and OR 1.23 (95 % CI, 0.76, 1.99), respectively. These data support the rationale for randomised, controlled trials to test the role of vitamin D supplementation in the prevention of HANOD.

Keywords

Vitamin D; 25-Hydroxyvitamin D; Delirium; Nosocomial infections; Hospital-acquired new-onset delirium

Delirium is a complex neuropsychiatric syndrome defined by five key elements: (1) a disturbance of attention; (2) a change in cognition; (3) a rapid onset; (4) a fluctuating course; (5) history, physical examination or laboratory findings which suggest that the disturbance is caused by a direct physiological consequence of a general medical condition, an intoxicating substance, medication use or more than one cause⁽¹⁾. It is commonly encountered in health care settings and has an occurrence rate between 11 and 56 % in hospitalised patients^(2,3). While many patients may have a pre-existing history of delirium or another neurocognitive disorder (e.g. dementia) that significantly increases the risk of delirium in an institutionalised setting^(4–6), the incidence of hospital-acquired new-onset delirium (HANOD) in other wise ‘low-risk’ individuals is estimated to be between 3 and 29 %⁽²⁾. On average, patients who develop HANOD remain hospitalised 4–13 d longer than their non-delirious counterparts⁽⁷⁾. There is also a 2-fold increased risk of mortality at 12 months when patients who develop HANOD are compared with those who remain free of delirium⁽²⁾. In the USA, annual health care expenditures attributable to HANOD are estimated to be \$38–152 billion⁽⁸⁾.

The underlying cause of delirium is often multifactorial⁽⁹⁾. Age, sex, medical comorbidities, recent surgery and history of cognitive impairment are all known risk factors for delirium in hospitalised patients^(7,9). Recently, with the discovery of vitamin D receptors in the human cortex and hippocampus (areas critical for intact cognition)⁽¹⁰⁾, the role of vitamin D status in neuropsychiatric disorders has become an area of active investigation^(11,12). Indeed, levels of the best serum marker of vitamin D status, 25-hydroxyvitamin D (25(OH)D), have been shown to be associated with the risk of dementia⁽¹³⁾, Alzheimer’s disease⁽¹⁴⁾ and depression⁽¹⁵⁾. Given the high prevalence of suboptimal 25(OH)D levels in the general population of the USA^(16–20), we performed a two-centre observational study of hospitalised adult patients. The objective of the present study was to investigate whether vitamin D status before hospital admission is associated with an increased risk of developing HANOD.

Materials and methods

Source population

We abstracted administrative and laboratory data from individuals who were hospitalised at one of two teaching hospitals in Boston, Massachusetts: Brigham and Women’s Hospital,

with 777 beds, and Massachusetts General Hospital, with 902 beds. These two hospitals provide primary and tertiary care to an ethnically and socioeconomically diverse population within and around Eastern Massachusetts.

Data sources

We obtained data on all patients admitted to Brigham and Women's Hospital or Massachusetts General Hospital between August 1993 and November 2006 through the Research Patient Data Registry (RPDR). RPDR is a computerised registry, which serves as a central data warehouse for all inpatient and outpatient records at Partners HealthCare facilities (including Brigham and Women's Hospital and Massachusetts General Hospital). The registry has been used for multiple clinical research studies^(21–25). The Institutional Review Board approval for the study was granted by the Partners Human Research Committee.

Study population

We identified 5341 individual patient admissions (age ≥ 18 years) over the study period that were assigned a Diagnostic Related Group and that had documented serum 25(OH)D measurements between 7 and 365 d before hospitalisation. The Diagnostic Related Group is a nationwide classification system used by hospitals in the USA to categorise the expected resource utilisation for a specific medical case (e.g. heart failure exacerbation, appendectomy). We then excluded five foreign patients without Social Security Numbers since vital status in the present study was determined by the Social Security Administration Death Master File, and 828 patients who had existing history of delirium or dementia, or a diagnosis of delirium or dementia upon hospitalisation. The final study cohort was therefore composed of 4508 patients.

Exposure and outcome of interest

The exposure of interest was pre-admission serum 25(OH)D level obtained 7–365 d before the date of hospitalisation. 25(OH)D levels were categorised *a priori* as <10, 10–19.9, 20–29.9 and ≥ 30 ng/ml. All cut points were adapted from the Endocrine Society clinical practice guidelines⁽²⁶⁾. Serum 25(OH)D in all cohort subjects was determined by RIA utilising the DiaSorin Corporation 25-Hydroxyvitamin D 125I RIA kit⁽²⁷⁾. Inter- and intra-assay CV were both <10 %. The primary outcome of interest was the presence of HANOD. HANOD was defined as the new presence of International Classification of Disease, 9th Revision, Clinical Modification (ICD-9-CM) codes related to delirium: 290.11, 290.3, 290.41, 291.–9, 292.81, 293.0 – 293.0 293.9, 300.11, 308.09, 780.02 or 780.09 during hospitalisation.

Comorbidities

Data specific to age, sex and race for each patient was directly abstracted from the RPDR. We utilised the ICD-9-CM coding algorithms, which are well studied and validated^(30,31), to derive the Deyo–Charlson Index to assess the burden of chronic illness in our study cohort⁽³²⁾. 'Patient Type' was defined as 'Medical' or 'Surgical' and incorporated the Diagnostic Related Group methodology⁽³³⁾. Recent surgery data were obtained from operating room schedule records and was defined as a surgical procedure performed in the

operating room before delirium diagnosis. Intensive care unit admission was determined by the assignment of Current Procedural Terminology code 99 291 (critical care, first 30–74 min) during hospitalisation. The use of Current Procedural Terminology code 99 291 in this manner has been previously validated in the RPDR database⁽²⁵⁾. Chronic liver disease was determined by ICD-9-CM codes 571.xx, 70.54 and 70.32⁽³⁴⁾. Sepsis was defined by the hospitalisation: 038.0–038.9; 020.0; 790.7; 117.9; 112.5 112.8⁽³⁵⁾, with exclusion of sepsis occurring after a diagnosis of delirium. We have validated ICD-9-CM identification of sepsis in the RPDR database⁽³⁶⁾. History of major depressive disorder was defined by the presence of ICD-9-CM codes 296.2x or 296.3x before hospital admission⁽³⁷⁾. Antipsychotic medication use was determined via pharmacy data of haloperidol, risperidone or olanzapine prescriptions during hospitalisation, since these were the antipsychotic medications on the hospital formularies over the study period.

Assessment of mortality

Information on vital status for the study cohort was obtained from the Social Security Administration Death Master File, which has a reported sensitivity for mortality up to 92 % and a specificity of . 99 %^(38–41). Utilisation of the Death Master File allows for long-term follow-up of patients after hospital discharge.

Power calculations and statistical analysis

Based on previous studies on HANOD susceptibility among hospitalised patients⁽²⁾, we assumed that delirium incidence would decrease from 10 % in patients with pre-hospital 25(OH)D < 20 ng/ml to 5 % in those with pre-hospital 25(OH)D ≥ 20 ng/ml. With an error level of 5 % and a power of 80 %, the minimum sample size thus required for our primary end point (HANOD) is 1242 total patients.

Categorical variables were described by frequency distributions, and compared across 25(OH)D groups using contingency tables and χ^2 testing. Continuous variables were examined graphically (e.g. histogram and box plot) and in terms of summary statistics, i.e. mean and standard deviation for normally distributed data or median and interquartile range for nonparametric data, and then compared across exposure groups using one-way ANOVA. The outcome considered was HANOD.

Unadjusted associations between 25(OH)D groups and HANOD were estimated by bivariable logistic regression models. Adjusted OR were estimated by multivariable logistic regression models, including *a priori* covariate terms considered to plausibly associate with both 25(OH)D levels and HANOD⁽⁸⁾ to avoid unnecessarily adjusting for variables that do not affect bias or the causal relationship between exposure and outcome⁽⁴²⁾. For the primary model (HANOD), specification of each continuous covariate (as a linear *v.* categorical term) was adjudicated by the empiric association with the primary outcome using Akaike's Information Criterion; overall model fit was assessed using the Hosmer–Lemeshow test. Models for secondary analyses were specified identically to the primary model. Unadjusted event rates were calculated with the use of the Kaplan–Meier methods and compared with the use of the log-rank test. Locally weighted scatter plot smoothing^(43,44) was used to graphically represent the relationship between pre-hospital 25(OH)D level and the risk of

HANOD. All *P*-values are two-tailed, with values, $0 < 0.05$ considered statistically significant. All analyses were performed using Stata 12.0MP statistical software (Stata Corporation).

Results

Most patients were female, white and had a medical-related Diagnostic Related Group (Table 1). The mean age at hospital admission was 59 (SD 18) years. Approximately 4 % of the cohort patients (n 198) met the criteria for HANOD. The mean 25(OH)D level was 22 (SD 13) ng/ml (to convert to nmol/l, multiply by 2.496). The 45 % of the 25(OH)D measurements occurred in the 3 months before hospital admission.

Patient characteristics of the study cohort were stratified according to pre-admission 25(OH)D levels (Table 2). Factors that significantly differed between stratified groups included age, sex, race, patient type (medical v. surgical), Deyo–Charlson Index and vitamin D supplementation use. 25(OH)D levels, age and Deyo–Charlson Index were found to be significant predictors of HANOD (Table 3). In-hospital, 30-d and 90-d mortality rates were 3, 4 and 7 %, respectively.

Primary outcome

Low pre-admission vitamin D status was a strong predictor of HANOD after adjustment for age, sex, race, Deyo–Charlson Index and patient type (Table 4). The adjusted odds of HANOD in patients with 25(OH)D levels < 10 ng/ml and in those with levels 10–19.9 ng/ml were 2.2- and 1.5-fold higher than in patients with 25(OH)D levels ≥ 30 ng/ml, respectively (Table 4). Additional individual adjustment for potential confounders such as recent surgery, sepsis, history of major depression, antipsychotic drug medication use, leucocyte count or calcium on admission, chronic liver disease, season of 25(OH)D draw, the timing of the 25(OH)D draw relative to admission and intensive care unit admission did not materially alter these point estimates (Table 5).

Secondary outcomes

To assess the discrimination of 25(OH)D for HANOD, we used receiver-operating characteristic curve analysis and determined the AUC. Estimating the AUC showed that 25(OH)D had poor discriminative power for HANOD: AUC = 0.57 (95 % CI 0.53, 0.61). Locally weighted scatter plot smoothing plot (Fig. 1) showed a near inverse linear association between 25(OH)D level and the risk of HANOD up to 25(OH)D levels near 30 ng/ml. Beyond 25(OH)D of 40 ng/ml, the curve appears flat.

In the study cohort (n 4508), the HANOD rate in patients with pre-hospital 25(OH)D, 10, 10–19.9, 20–29.9 or ≥ 30 ng/ml was determined to be approximately 69, 46, 37 and 31 per 1000 inpatients, respectively; the overall incidence was determined to be forty-four per 1000 inpatients. Finally, HANOD is associated with all-cause mortality (Fig. 2). When HANOD is considered as the exposure and all-cause mortality the outcome, HANOD is associated with 90 d mortality: OR for 90-d mortality in patients with HANOD 3.26 (95 % CI 2.27, 4.69) relative to those without HANOD adjusted for age, sex, race, patient type and Deyo–Charlson Index. When further adjusted for 25(OH)D status, the OR for 90-d mortality in

patients with HANOD is 3.12 (95 % CI 2.17, 4.50) relative to those without HANOD adjusted for age, sex, race, patient type, Deyo–Charlson Index and 25(OH)D level.

Effect modification

Analyses based on fully adjusted models were performed to evaluate the 25(OH)D–HANOD association, and *P* for interaction was determined to explore for any evidence of effect modification. We individually tested for effect modification by creatinine, season of 25(OH)D draw, time between 25(OH)D draw and hospital admission or hospital of care by adding an interaction term to the multivariate models. None of these variables emerged as an effect modifier of the association between 25(OH)D and HANOD (*P* for interaction: HANOD . 0.20 for all variables tested).

Discussion

In the present study, we investigated whether vitamin D status before hospitalisation was associated with the risk of HANOD. We demonstrated that pre-hospital 25(OH)D < 10 ng/ml is indeed associated with a significant increase in the odds of delirium in patients during hospitalisation. While others have reported that vitamin D status may play an important protective role against various neuropsychiatric disorders^(11–15), the present study presents important evidence to suggest that vitamin D supplementation may provide a novel approach to lowering HANOD risk. However, due to the observational nature of the present study, causal inference of the relationship between vitamin D status and delirium is limited.

The observed association between 25(OH)D and HANOD is biologically plausible. Purkinje cells as well as other neurons in the cerebral cortex and hippocampus (the primary cognitive centres in the human brain) express the vitamin D receptors⁽¹³⁾. Binding of the 25(OH)D–vitamin D receptor complex to the nuclear vitamin D response element induces the synthesis of 1- α -hydroxylase⁽⁴⁵⁾, which is critical for the paracrine conversion of 25(OH)D to 1,25-dihydroxyvitamin D. As the most biologically active vitamin D metabolite in the central nervous system, 1,25-dihydroxyvitamin D upregulates hippocampal expression of neurotrophins⁽⁴⁶⁾. Neurotrophins are a family of proteins that are critical for regulating the survival, differentiation and maintenance of nerve cells⁽⁴⁷⁾. Brain-derived neurotrophic factor and nerve growth factor, two key members of the neurotrophin family, have both been shown to be directly associated with delirium following acute stress^(48,49). In addition, vitamin D may contribute to neuro protection by modulating the production of glial cell-derived neurotrophic factor, NO synthase and choline acetyl transferase⁽¹³⁾. Since it is evident that derangements in the cognitive pathways of the brain predispose patients to HANOD, and that vitamin D status is essential for both optimal nerve function and recovery following stress, the present findings raise a number of questions that merit further investigation.

The present study is not without potential limitations. Cohort studies may not provide the highest level of clinical evidence, but may direct future research by illustrating the existence or absence of a true effect⁽⁵⁰⁾. Observational studies may also be limited by confounding, reverse causation and/or the lack of a randomly distributed exposure. Since the patient cohort under the study had vitamin D status measurements related to an unknown reason

(e.g. work-up for malnutrition, comprehensive immunological work-ups and monitoring for endocrine disorders), which may be absent in other hospitalised patients, ascertainment bias may exist in the present study. These differences may decrease the generalisability of the present results to all hospitalised patients. Despite adjustment for multiple potential confounders, there may still be residual confounding that contributed to the observed differences in outcomes. Specifically, low 25(OH)D levels may be a marker for the general condition of patients (i.e. the combined effect of nutritional status, functional mobility and chronic systemic diseases), for which we are unable to fully adjust.

A further potential limitation is related to the fact that we utilised 25(OH)D measurements between 7 and 365 d before hospitalisation as a reflection of pre-hospital vitamin D status. Others have shown that the intra-person Pearson correlation coefficient for 25(OH)D in outpatients following adjustments for age, race and season is 0.70 at 3 years between blood draws⁽⁵¹⁾. In our cohort, there was no interaction of the 25(OH)D–HANOD association with regard to when 25(OH)D was obtained. Despite this observation, vitamin D status at the time of hospitalisation may be different than when prehospital values were drawn. Indeed, inflammatory changes, intravenous fluid administration and renal wasting may significantly contribute to rapid drops (approximately 30–40 %) in circulating 25(OH)D levels during acute stress⁽⁵²⁾. And although sunlight exposure, nutritional status (beyond the use of BMI), frailty/functional status and alcohol consumption are all potentially important confounders that may affect the 25(OH)D–HANOD relationship, given the limitations of our present electronic database, we are unable to adjust for these covariates. These issues will need to be addressed by other groups as they try to replicate and extend our finding.

The present study has several strengths. We have sufficient statistical power to detect a clinically relevant difference in HANOD. We were able to control for several well-known risk factors for HANOD such as age, sex, recent surgery, use of antipsychotic medications, serious infections and a history of major depression. In addition, the Deyo–Charlson Index allowed us to account for chronic medical comorbidities. Moreover, by our design of measuring vitamin D status before hospitalisation, we attempted to uncouple the influence of illness and inflammation on 25(OH)D levels; we did not include 25(OH)D levels drawn in the 7 d before hospitalisation to avoid any potential alterations of vitamin D status related to acute illness or inflammation.

Conclusion

In conclusion, the present results suggest that pre-hospital vitamin D status may be a modifiable risk factor for HANOD. We hypothesise that serum 25(OH)D levels are associated with optimal expression of endogenous proteins involved with the maintenance of neuronal health in the areas of the central nervous system responsible for cognition. In turn, this may attenuate the effect of acute stressors that may increase the risk of HANOD. Prospective studies are needed to validate our findings, to assess the potential benefit of optimising pre-hospital 25(OH)D levels, and to identify the mechanism by which vitamin D may confer protection against neuropsychiatric disorders such as HANOD.

Acknowledgements

This manuscript is dedicated to the memory of our dear friend and colleague Nathan Edward Hellman, MD, PhD.

S. A. Q. was financially supported by the US National Institutes of Health 5T32GM007592 and UL1 RR025758. C.

A. C. was supported by the US National Institutes of Health R01 AI093723 and U01AI087881. K. B. C. was supported by the US National Institutes of Health K08AI060881.

Abbreviations

25(OH)D	25-hydroxyvitamin D
HANOD	hospital-acquired new-onset delirium
RPDR	Research Patient Data Registry

References

1. American Psychiatric Association. Diagnostic and Statistical Manual of Mental Disorders. 5th. American Psychiatric Association; Washington, DC: 2006.
2. Siddiqi N, House AO, Holmes JD. Occurrence and outcome of delirium in medical in-patients: a systematic literature review. *Age Ageing*. 2006; 35:350–364. [PubMed: 16648149]
3. Reston JT, Schoelles KM. In-facility delirium prevention programs as a patient safety strategy: a systematic review. *Ann Intern Med*. 2013; 158:375–380. [PubMed: 23460093]
4. Inouye SK, Viscoli CM, Horwitz RI, et al. A predictive model for delirium in hospitalized elderly medical patients based on admission characteristics. *Ann Intern Med*. 1993; 119:474–481. [PubMed: 8357112]
5. Marcantonio ER, Goldman L, Mangione CM, et al. *JAMA*. 271:134–139. [PubMed: 8264068]
6. Rudolph JL, Jones RN, Levkoff SE, et al. Derivation and validation of a preoperative prediction rule for delirium after cardiac surgery. *Circulation*. 2009; 119:229–236. [PubMed: 19118253]
7. McCusker J, Cole M, Dendukuri N, et al. Delirium in older medical inpatients and subsequent cognitive and functional status: a prospective study. *CMAJ*. 2001; 165:575–583. [PubMed: 11563209]
8. Leslie DL, Marcantonio ER, Zhang Y, et al. One-year health care costs associated with delirium in the elderly population. *Arch Intern Med*. 2008; 168:27–32. [PubMed: 18195192]
9. Siddiqi N, House A. Delirium: an update on diagnosis, treatment and prevention. *Clin Med*. 2006; 6:540–543. [PubMed: 17228552]
10. Kalueff AV, Tuohimaa P. Neurosteroid hormone vitamin D and its utility in clinical nutrition. *Curr Opin Clin Nutr Metab Care*. 2007; 10:12–19. [PubMed: 17143049]
11. Buell JS, Dawson-Hughes B. Vitamin D and neurocognitive dysfunction: preventing “D”ecline? *Mol Aspects Med*. 2008; 29:415–422. [PubMed: 18579197]
12. Annweiler C, Allali G, Allain P, et al. Vitamin D and cognitive performance in adults: a systematic review. *Eur J Neurol*. 2009; 16:1083–1089. [PubMed: 19659751]
13. Balion C, Griffith LE, Striffler L, et al. Vitamin D, cognition, and dementia: a systematic review and meta-analysis. *Neurology*. 2012; 79:1397–1405. [PubMed: 23008220]
14. Annweiler C, Llewellyn DJ, Beauchet O. Low serum vitamin D concentrations in Alzheimer’s disease: a systematic review and meta-analysis. *J Alzheimers Dis*. 2013; 33:659–674. [PubMed: 23042216]
15. Anglin RE, Samaan Z, Walter SD, et al. Vitamin D deficiency and depression in adults: systematic review and meta-analysis. *Br J Psychiatry*. 2013; 202:100–107. [PubMed: 23377209]
16. Kuriacose R, Olive KE. Prevalence of vitamin D deficiency and insufficiency in northeast Tennessee. *South Med J*. 2008; 101:906–909. [PubMed: 18708969]

17. Pellicane AJ, Wysocki NM, Schnitzer TJ. Prevalence of 25-hydroxyvitamin D deficiency in the outpatient rehabilitation population. *Am J Phys Med Rehabil.* 2010; 89:899–904. [PubMed: 20962600]
18. Fish E, Beverstein G, Olson D, et al. Vitamin D status of morbidly obese bariatric surgery patients. *J Surg Res.* 2010; 164:198–202. [PubMed: 20850786]
19. Bogunovic L, Kim AD, Beamer BS, et al. Hypovitaminosis D in patients scheduled to undergo orthopaedic surgery: a single-center analysis. *J Bone Joint Surg Am.* 2010; 92:2300–2304. [PubMed: 20926724]
20. Ginde AA, Liu MC, Camargo CA, et al. Demographic differences and trends of vitamin D insufficiency in the US population, 1988–2004. *Arch Intern Med.* 2009; 169:626–632. [PubMed: 19307527]
21. Braun A, Chang D, Mahadevappa K, et al. Association of low serum 25-hydroxyvitamin D levels and mortality in the critically ill. *Crit Care Med.* 2011; 39:671–677. [PubMed: 21242800]
22. Hivert MF, Grant RW, Shrader P, et al. Identifying primary care patients at risk for future diabetes and cardiovascular disease using electronic health records. *BMC Health Serv Res.* 2009; 9:170. [PubMed: 19772639]
23. Hug BL, Lipsitz SR, Seger DL, et al. Mortality and drug exposure in a 5-year cohort of patients with chronic liver disease. *Swiss Med Wkly.* 2009; 139:737–746. [PubMed: 19924579]
24. Linder JA, Bates DW, Williams DH, et al. Acute infections in primary care: accuracy of electronic diagnoses and electronic antibiotic prescribing. *J Am Med Inform Assoc.* 2006; 13:61–66. [PubMed: 16221947]
25. Zager S, Mendu ML, Chang D, et al. Neighborhood poverty rate and mortality in patients receiving critical care in the academic medical center setting. *Chest.* 2011; 139:1368–1379. [PubMed: 21454401]
26. Holick MF, Binkley NC, Bischoff-Ferrari HA, et al. Evaluation, treatment, and prevention of vitamin D deficiency: an Endocrine Society clinical practice guideline. *J Clin Endocrinol Metab.* 2011; 96:1911–1930. [PubMed: 21646368]
27. Hollis BW, Kamerud JQ, Selvaag SR, et al. Determination of vitamin D status by radioimmunoassay with an ¹²⁵I-labeled tracer. *Clin Chem.* 1993; 39:529–533. [PubMed: 8448871]
28. Inouye SK, Leo-Summers L, Zhang Y, et al. A chart-based method for identification of delirium: validation compared with interviewer ratings using the confusion assessment method. *J Am Geriatr Soc.* 2005; 53:312–318. [PubMed: 15673358]
29. Swan JT, Fitousis K, Hall JB, et al. Antipsychotic use and diagnosis of delirium in the intensive care unit. *Crit Care.* 2012; 16:R84. [PubMed: 22591601]
30. Quan H, Sundararajan V, Halfon P, et al. Coding algorithms for defining comorbidities in ICD-9-CM and ICD-10 administrative data. *Med Care.* 2005; 43:1130–1139. [PubMed: 16224307]
31. Quan H, Li B, Couris CM, et al. Updating and validating the Charlson comorbidity index and score for risk adjustment in hospital discharge abstracts using data from 6 countries. *Am J Epidemiol.* 2011; 173:676–682. [PubMed: 21330339]
32. Charlson ME, Pompei P, Ales KL, et al. A new method of classifying prognostic comorbidity in longitudinal studies: development and validation. *J Chronic Dis.* 1987; 40:373–383. [PubMed: 3558716]
33. Rapoport J, Gehlbach S, Lemeshow S, et al. Resource utilization among intensive care patients. Managed care vs traditional insurance. *Arch Intern Med.* 1992; 152:2207–2212. [PubMed: 1444680]
34. Glasgow RE, Showstack JA, Katz PP, et al. The relationship between hospital volume and outcomes of hepatic resection for hepatocellular carcinoma. *Arch Surg.* 1999; 134:30–35. [PubMed: 9927127]
35. Martin GS, Mannino DM, Eaton S, et al. The epidemiology of sepsis in the United States from 1979 through 2000. *New Engl J Med.* 2003; 348:1546–1554. [PubMed: 12700374]
36. Moromizato T, Litonjua AA, Braun AB, et al. Association of low serum 25-hydroxyvitamin d levels and sepsis in the critically ill. *Crit Care Med.* 2014; 42:97–107. [PubMed: 23982028]

37. Busch SH. Specialty health care, treatment patterns, and quality: the impact of a mental health carve-out on care for depression. *Health Serv Res.* 2002; 37:1583–1601. [PubMed: 12546287]
38. Cowper DC, Kubal JD, Maynard C, et al. A primer and comparative review of major US mortality databases. *Ann Epidemiol.* 2002; 12:462–468. [PubMed: 12377423]
39. Sohn MW, Arnold N, Maynard C, et al. Accuracy and completeness of mortality data in the Department of Veterans Affairs. *Popul Health Metr.* 2006; 4:2. [PubMed: 16606453]
40. Schisterman EF, Whitcomb BW. Use of the Social Security Administration Death Master File for ascertainment of mortality status. *Popul Health Metr.* 2004; 2:2. [PubMed: 15003125]
41. Newman TB, Brown AN. Use of commercial record linkage software and vital statistics to identify patient deaths. *J Am Med Inform Assoc.* 1997; 4:233–237. [PubMed: 9147342]
42. Schisterman EF, Cole SR, Platt RW. Overadjustment bias and unnecessary adjustment in epidemiologic studies. *Epidemiology.* 2009; 20:488–495. [PubMed: 19525685]
43. Cleveland W. Robust locally weighted regression and smoothing scatterplots. *J Am Stat Assoc.* 1979; 74:829–836.
44. Cleveland W, Devlin S. Locally-weighted regression: an approach to regression analysis by local fitting. *J Am Stat Assoc.* 1988; 83:596–610.
45. Zehnder D, Bland R, Williams MC, et al. Extrarenal expression of 25-hydroxyvitamin D(3)–1 α -hydroxylase. *J Clin Endocrinol Metab.* 2001; 86:888–894. [PubMed: 11158062]
46. McCann JC, Ames BN. Is there convincing biological or behavioral evidence linking vitamin D deficiency to brain dysfunction? *FASEB J.* 2008; 22:982–1001. [PubMed: 18056830]
47. Glade MJ. A 21st century evaluation of the safety of oral vitamin D. *Nutrition.* 2012; 28:344–356. [PubMed: 22414585]
48. Grandi C, Tomasi CD, Fernandes K, et al. Brain-derived neurotrophic factor and neuron-specific enolase, but not S100 β , levels are associated to the occurrence of delirium in intensive care unit patients. *J Crit Care.* 2011; 26:133–137. [PubMed: 21106342]
49. Jockers-Scherubl MC, Bauer A, Kuhn S, et al. Nerve growth factor in serum is a marker of the stage of alcohol disease. *Neurosci Lett.* 2007; 419:78–82. [PubMed: 17434673]
50. Concato J, Shah N, Horwitz RI. Randomized, controlled trials, observational studies, and the hierarchy of research designs. *New Engl J Med.* 2000; 342:1887–1892. [PubMed: 10861325]
51. Platz EA, Leitzmann MF, Hollis BW, et al. Plasma 1,25-dihydroxy- and 25-hydroxyvitamin D and subsequent risk of prostate cancer. *Cancer Causes Control.* 2004; 15:255–265. [PubMed: 15090720]
52. Quraishi SA, Camargo CA Jr. Vitamin D in acute stress and critical illness. *Curr Opin Clin Nutr Metab Care.* 2012; 15:625–634. [PubMed: 23075939]

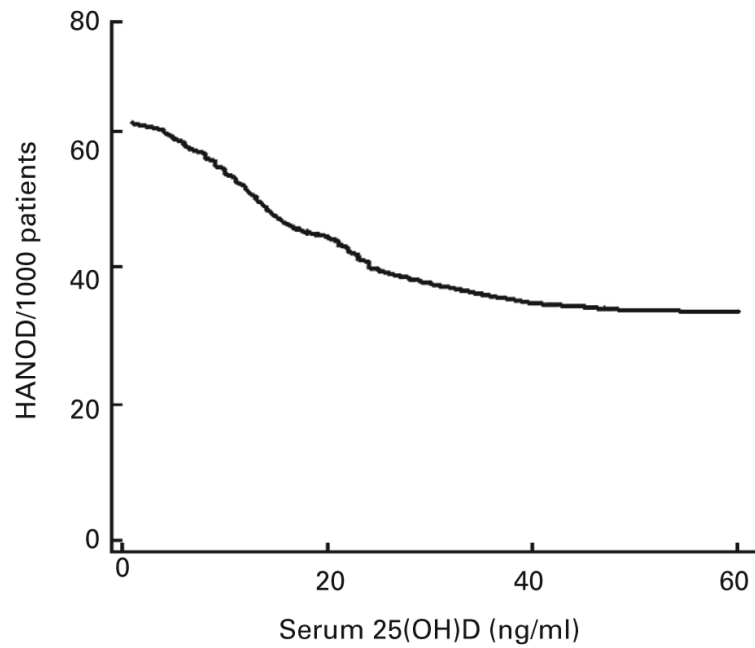


Fig. 1. Vitamin D status *v.* the risk of hospital-acquired new-onset delirium. Locally weighted scatter plot smoothing utilised to represent the near inverse linear association between pre-hospital 25-hydroxyvitamin D (25(OH)D) level and the risk of hospital-acquired new-onset delirium(HANOD). Plot constructed with data from inpatients (n 4508) with pre-hospital vitamin D status excluding patients with existing history of delirium or dementia, and those with the diagnosis of delirium or dementia on admission.

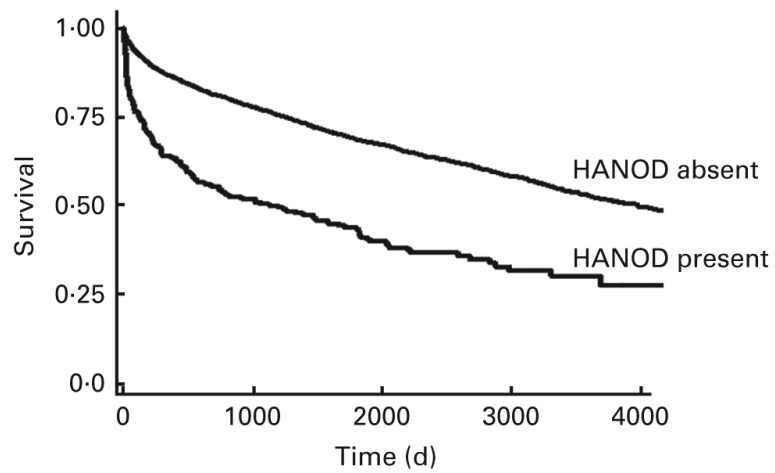


Fig. 2. Time-to-event curves for the secondary end point (mortality). Unadjusted event rates were calculated with the use of Kaplan–Meier methods and compared with the use of the log-rank test. The global comparison log rank P value is , 0.0001 (n 4508). HANOD, hospital-acquired new-onset delirium. Vitamin D status and new-onset delirium.

Table 1

Baseline demographic characteristics of the study population (Number of subjects and percentages; mean values and standard deviations)

	<u>Non- HANOD</u>		<u>HANOD</u>		<u>Total</u>	
	<i>n</i>	%	<i>n</i>	%	<i>n</i>	%
Total number of cases	4309		199		4508	
Age (years)						
Mean	59		67		59	
SD	18		18		18	
Sex						
Female	2836	66	125	63	2961	66
Male	1473	34	74	37	1547	34
Race						
White	3606	84	168	84	3774	84
Non-white	703	16	31	16	734	16
Patient type						
Medical	2517	58	138	69	2655	59
Surgical	1792	42	61	31	1853	41
Deyo–Charlson Index						
0–3	1969	46	48	24	2017	45
4–6	1103	26	62	31	1165	26
7	1237	29	89	45	1326	29
Recent surgery	150	4	9	5	159	4
Psychiatric primary diagnosis	62	1.4	3	1.5	65	1.4
Antipsychotic medications	174	4	72	36	246	5
Major depressive disorder history	134	3	14	7	148	3
25(OH)D (ng/ml)						
Mean	22		19		22	
SD	13		11		13	
Season of 25(OH)D draw						
Autumn	925	21	57	29	982	22
Spring	1096	25	38	19	1134	25
Summer	1035	24	61	31	1096	24
Winter	1253	29	43	22	1296	29
Vitamin D supplemental use*	501	12	36	18	537	12
90 d mortality	284	7	47	24	331	7

HANOD, hospital-acquired new-onset delirium; 25(OH)D, 25-hydroxyvitamin D.

* Vitamin D supplemental use refers to vitamin D supplementation in the year before hospitalisation.

Table 2

Patient characteristics by pre-hospital vitamin D status (Number of subjects and percentages; mean values and standard deviations)

	Pre-hospital 25(OH)D								P *
	<10 ng/ml		10–199 ng/ml		20–299 ng/ml		30 ng/ml		
	n	%	n	%	n	%	n	%	
Number of cases	742		1542		1342		882		
Age (years)									0.012 [†]
Mean	59		58		60		61		
sd	18		18		18		18		
Sex									0.001
Female	472	64	980	64	879	66	630	71	
Male	270	36	562	36	463	35	252	29	
Race									<0.001
White	567	76	1248	81	1161	87	798	90	
Non-white	175	24	294	19	181	13	84	10	
Patient type									<0.001
Medical	511	69	909	59	759	57	476	54	
Surgical	231	31	633	41	583	43	406	46	
Deyo–Charlson Index									<0.001
0–3	250	34	683	44	660	49	424	48	
4–6	202	27	415	27	325	24	223	25	
7	290	39	444	29	357	27	235	27	
Chronic liver disease	182	25	403	26	324	24	184	21	0.036
Psychiatric primary diagnosis	11	2	24	2	19	1	11	1	0.85
Major depressive disorder history	25	3	51	3	53	4	19	2	0.14
Antipsychotic medications	47	6	87	6	73	5	39	4	0.39
Vitamin D supplemental use [‡]	126	17	194	13	121	9	96	11	<0.001
Sepsis	59	8	77	5	57	4	26	3	<0.001
Bloodstream infection [§]	38	17	65	17	39	13	29	14	0.38
Leucocytes ($\times 10^3/\mu\text{l}$)									0.061
0–3.9	36	5	44	3	37	3	25	3	
4.0–9.9	354	48	705	46	649	48	432	49	
>10	352	47	793	51	656	49	425	48	
Creatinine (>133 $\mu\text{mol/l}$)	261	35	350	23	256	19	152	17	<0.001
ICU admission	63	8	105	7	107	8	69	8	0.47
HANOD	51	7	71	5	50	4	27	3	0.001
90 d mortality	78	11	133	9	76	6	44	5	<0.001

25(OH)D, 25-hydroxyvitamin D; ICU, intensive care unit; HANOD, hospital-acquired new-onset delirium.

* P values were determined by Kruskal–Wallis test.

[†] *P* value determined by χ^2 test.

[‡] Vitamin D supplemental use refers to vitamin D supplementation in the year before hospitalisation.

[§] 1116 patients with blood cultures drawn.

^{||} Leucocyte count measured at hospital admission.

Author Manuscript

Author Manuscript

Author Manuscript

Author Manuscript

Table 3

Multivariable-adjusted associations between covariates and hospital-acquired new-onset delirium (HANOD)*
(Odds ratios and 95% confidence intervals)

	OR	95% CI	P
Age (per 1 year)	1.02	1.01, 1.03	<0.001
Sex			0.55
Female	1.00	Reference	
Male	1.10	0.81, 1.48	
Race			0.60
Non-white	1.00	Reference	
White	0.90	0.60, 1.34	
Patient type			
Medical	1.00	Reference	0.13
Surgical	0.61	0.32, 1.15	
Deyo–Charlson Index			
0–3	1.00	Reference	
4–6	1.77	1.19, 2.62	0.005
7	2.12	1.46, 3.09	<0.001
Pre-hospital 25(OH)D (ng/ml)			
<10	2.15	1.32, 3.50	0.002
10–19.9	1.54	0.98, 2.43	0.063
20–29.9	1.23	0.76, 1.99	0.39
30	1.00	Reference	

25(OH)D, 25-hydroxyvitamin D.

* Adjusted OR were estimated by a multivariable logistic regression model with inclusion of covariate terms considered to plausibly associate with vitamin D status and HANOD. Estimates for each variable are adjusted for all other variables in the table.

Table 4

Unadjusted and adjusted associations between pre-hospital vitamin D status and hospital-acquired new-onset delirium (HANOD)* (Odds ratios and 95% confidence intervals, *n* 4508)

	Pre-hospital 25(OH)D			
	<10 ng/ml	10–199 ng/ml	20–299 ng/ml	30 ng/ml
Unadjusted				
OR	2.34	1.53	1.23	1.00
95% CI	1.45, 3.77	0.97, 2.40	0.76, 1.97	Referent
<i>P</i>	<0.001	0.065	0.40	
Adjusted				
OR	2.15	1.54	1.23	1.00
95% CI	1.32, 3.50	0.98, 2.43	0.76, 1.99	Referent
<i>P</i>	0.002	0.063	0.39	

25(OH)D, 25-hydroxyvitamin D.

* Unadjusted associations between 25(OH)D groups and HANOD were estimated by bivariable logistic regression models. Adjusted OR were estimated by multi-variable logistic regression models with inclusion of covariate terms considered to plausibly associate with both 25(OH)D concentrations and HANOD. Estimates adjusted for age, sex, race (non-white *v.* white), patient type (medical *v.* surgical) and Deyo–Charlson Index.

Table 5

Adjusted associations between pre-hospital vitamin D status and hospital-acquired new-onset delirium (HANOD)* (Odds ratios and 95 % confidence intervals, *n* 4508)

	Pre-hospital 25(OH)D			
	<10 ng/ml	10–199 ng/ml	20–299 ng/ml	30 ng/ml
Adjusted+recent surgery				
OR	2.13	1.51	1.21	1.00
95% CI	1.30, 3.48	0.96, 2.39	0.75, 1.96	Referent
<i>P</i>	0.003	0.078	0.44	
Adjusted+sepsis				
OR	2.04	1.51	1.21	1.00
95% CI	1.25, 3.33	0.96, 2.39	0.75, 1.96	Referent
<i>P</i>	0.004	0.076	0.43	
Adjusted+ depression				
OR	2.14	1.53	1.20	1.00
95% CI	1.32, 3.48	0.97, 2.42	0.74, 1.94	Referent
<i>P</i>	0.002	0.067	0.45	
Adjusted+ antipsychotics				
OR	2.01	1.45	1.15	1.00
95% CI	1.21, 3.35	0.91, 2.33	0.70, 1.90	Referent
<i>P</i>	0.007	0.12	0.57	
Adjusted+leucocyte count				
OR	2.15	1.52	1.23	1.00
95% CI	1.32, 3.49	0.97, 2.41	0.76, 1.99	Referent
<i>P</i>	0.002	0.069	0.40	
Adjusted+Ca				
OR	2.15	1.55	1.24	1.00
95% CI	1.33, 3.50	0.98, 2.44	0.77, 2.01	Referent
<i>P</i>	0.002	0.061	0.38	
Adjusted+liver disease				
OR	2.16	1.54	1.23	1.00
95% CI	1.33, 3.51	0.98, 2.43	0.76, 1.99	Referent
<i>P</i>	0.002	0.063	0.39	
Adjusted+season of 25(OH)D draw				
OR	2.14	1.51	1.21	1.00
95% CI	1.30, 3.49	0.96, 2.40	0.75, 1.96	Referent
<i>P</i>	0.003	0.076	0.43	
Adjusted+timing of 25(OH)D draw				
OR	2.09	1.52	1.23	1.00
95% CI	1.28, 3.41	0.97, 2.40	0.76, 1.99	Referent
<i>P</i>	0.003	0.071	0.39	

	Pre-hospital 25(OH)D			
	<10 ng/ml	10–199 ng/ml	20–299 ng/ml	30 ng/ml
Adjusted+ICU admission				
OR	2.22	1.61	1.23	1.00
95% CI	1.36, 3.62	1.01, 2.55	0.76, 2.00	Referent
<i>P</i>	0.001	0.043	0.40	

25(OH)D, 25-hydroxyvitamin D; ICU, intensive care unit.

* Adjusted associations between 25(OH)D groups and HANOD were estimated by multivariable logistic regression models with the inclusion of covariate terms considered to plausibly associate with both 25(OH)D concentrations and HANOD. Adjusted estimates adjusted for age, sex, race (non-white *v.* white), patient type (medical *v.* surgical) and Deyo–Charlson index.

Author Manuscript

Author Manuscript

Author Manuscript

Author Manuscript