



"Hastings family tree, 1381-1874" in "A survey of the poetry collection in manuscript of the Noble family of Huntingdon"

Citation

O'Donnell, Mary Ann. 2020. "Hastings family tree, 1381-1874" in "A survey of the poetry collection in manuscript of the Noble family of Huntingdon". Harvard Library Bulletin 28 (3), Fall 2017: v-vi.

Permanent link

<http://nrs.harvard.edu/urn-3:HUL.InstRepos:42659956>

Terms of Use

This article was downloaded from Harvard University's DASH repository, and is made available under the terms and conditions applicable to Other Posted Material, as set forth at <http://nrs.harvard.edu/urn-3:HUL.InstRepos:dash.current.terms-of-use#LAA>

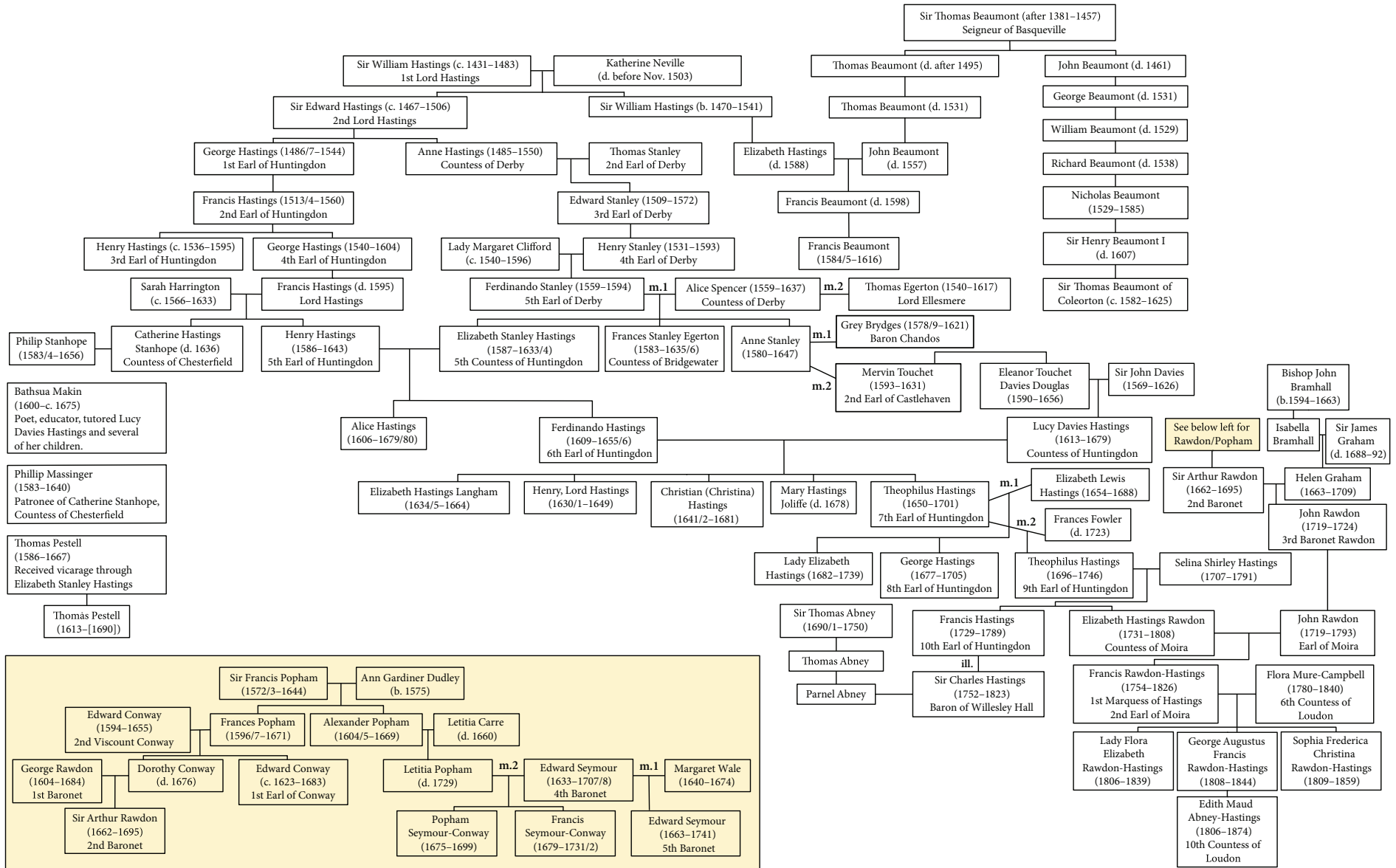
Share Your Story

The Harvard community has made this article openly available. Please share how this access benefits you. [Submit a story](#).

[Accessibility](#)

Hastings Family Tree

1381–1874



Compiled and organized by Hepzibah Rapoport.

Hastings Family Tree
1381-1874

Contributors

MARY ANN O'DONNELL is an adjunct professor in the Bedford Hills College Program of Marymount Manhattan College. She is professor emerita, English department, Manhattan College, and was also dean of the school of liberal arts there for seventeen years. She currently serves as a contributing editor for *Scriblerian* and on the editorial board of the new Cambridge University edition of the works of Aphra Behn. She has published extensively on Behn, including *Aphra Behn: An Annotated Bibliography of Primary and Secondary Sources* and "Bodleian MS. Firth c. 16: Aphra Behn's Verse Miscellany" in *English Manuscript Studies, 1100-1700* 2(1990). She also co-edited *Approaches to Teaching "Oroonoko"; Aphra Behn (1640-1689): Le Modèle Européen*; and *Aphra Behn (1640-689): Identity, Alterity, Ambiguity*.