



# TLR2 Mediates Recognition of Live *Staphylococcus epidermidis* and Clearance of Bacteremia

## Citation

Strunk, Tobias, Melanie R. Power Coombs, Andrew J. Currie, Peter Richmond, Douglas T. Golenbock, Liat Stoler-Barak, Leighanne C. Gallington, Michael Otto, David Burgner, and Ofer Levy. 2010. TLR2 mediates recognition of live *Staphylococcus epidermidis* and clearance of bacteremia. PLoS ONE 5(4): e10111.

## Published Version

doi:10.1371/journal.pone.0010111

## Permanent link

<http://nrs.harvard.edu/urn-3:HUL.InstRepos:4874770>

## Terms of Use

This article was downloaded from Harvard University's DASH repository, and is made available under the terms and conditions applicable to Other Posted Material, as set forth at <http://nrs.harvard.edu/urn-3:HUL.InstRepos:dash.current.terms-of-use#LAA>

## Share Your Story

The Harvard community has made this article openly available.  
Please share how this access benefits you. [Submit a story](#).

[Accessibility](#)

# TLR2 Mediates Recognition of Live *Staphylococcus epidermidis* and Clearance of Bacteremia

Tobias Strunk<sup>1,9</sup>, Melanie R. Power Coombs<sup>2,3,9</sup>, Andrew J. Currie<sup>1</sup>, Peter Richmond<sup>1</sup>, Douglas T. Golenbock<sup>4</sup>, Liat Stoler-Barak<sup>2</sup>, Leighanne C. Gallington<sup>2a</sup>, Michael Otto<sup>5</sup>, David Burgner<sup>1,6</sup>, Ofer Levy<sup>2,3,\*</sup>

**1** School of Paediatrics and Child Health, University of Western Australia, Perth, Australia, **2** Division Infectious Diseases, Children's Hospital Boston, Boston, Massachusetts, United States of America, **3** Harvard Medical School, Boston, Massachusetts, United States of America, **4** University of Massachusetts Medical School, Worcester, Massachusetts, United States of America, **5** National Institute of Allergy and Infectious Diseases, National Institutes of Health, Bethesda, Maryland, United States of America, **6** Murdoch Childrens Research Institute, Royal Childrens Hospital, Parkville, Victoria, Australia

## Abstract

**Background:** *Staphylococcus epidermidis* (SE) is a nosocomial pathogen that causes catheter-associated bacteremia in the immunocompromised, including those at the extremes of age, motivating study of host clearance mechanisms. SE-derived soluble components engage TLR2; but additional signaling pathways have also been implicated, and TLR2 can play complex, at times detrimental, roles in host defense against other *Staphylococcal spp.* The role of TLR2 in responses of primary blood leukocytes to live SE and in clearance of SE bacteremia, the most common clinical manifestation of SE infection, is unknown.

**Methodology/Principal Findings:** We studied TLR2-mediated recognition of live clinical SE strain 1457 employing TLR2-transfected cells, neutralizing anti-TLR antibodies and TLR2-deficient mice. TLR2 mediated SE-induced cytokine production in human embryonic kidney cells, human whole blood and murine primary macrophages, in part via recognition of a soluble TLR2 agonist. After i.v. challenge with SE, early (1 h) cytokine/chemokine production and subsequent clearance of bacteremia (24–48 h) were markedly impaired in TLR2-deficient mice.

**Conclusions/Significance:** TLR2 mediates recognition of live SE and clearance of SE bacteremia *in vivo*.

**Citation:** Strunk T, Power Coombs MR, Currie AJ, Richmond P, Golenbock DT, et al. (2010) TLR2 Mediates Recognition of Live *Staphylococcus epidermidis* and Clearance of Bacteremia. PLoS ONE 5(4): e10111. doi:10.1371/journal.pone.0010111

**Editor:** Adam J. Ratner, Columbia University, United States of America

**Received:** January 24, 2010; **Accepted:** March 19, 2010; **Published:** April 9, 2010

This is an open-access article distributed under the terms of the Creative Commons Public Domain declaration which stipulates that, once placed in the public domain, this work may be freely reproduced, distributed, transmitted, modified, built upon, or otherwise used by anyone for any lawful purpose.

**Funding:** Financial support: National Institute of Allergy and Infectious Diseases, National Institutes of Health RO1 AI067353-01A1 (O.L.); Princess Margaret Hospital, Women's and Infants' Research Foundation Western Australia, Clive and Vera Ramaciotti Medical Research Foundation, U. Western Australia, Rebecca Cooper Medical Research Foundation, Channel7 Telethon, European Society for Paediatric Infectious Diseases and the National Health and Medical Research Council, Australia (T.S., A.C., P.R., and D.B.); Intramural Research Program of the National Institute of Allergy and Infectious Diseases, U. S. National Institutes of Health (M.O.). T.S. was supported by a Research Fellowship of the Deutsche Forschungsgemeinschaft (STR1022/1-1) and an International Postgraduate Research Scholarship of the University of Western Australia. Support was also provided by fellowships from the Harvard Club of Australia (O.L.), Canadian Institutes of Health Research (M.C.) and the Children's Health Research Foundation of Western Australia (A.J.C.). The funders had no role in study design, data collection and analysis, decision to publish, or preparation of the manuscript.

**Competing Interests:** Potential conflicts of interest: O.L. served as a consultant to MedImmune and Biosynexus; none of the other authors declare any conflicts. This does not alter the authors' adherence to all the PLoS ONE policies on sharing data and materials.

\* E-mail: ofer.levy@childrens.harvard.edu

9 These authors contributed equally to this work.

a Current address: School of Chemistry and Biochemistry, Georgia Institute of Technology, Atlanta, Georgia, United States of America

## Introduction

*Staphylococci spp.* are frequent causes of nosocomial infection [1,2]. Coagulase-negative staphylococci, especially *S. epidermidis* (SE) are ubiquitous skin commensals and a major cause of nosocomial bacteremia, particularly in immunocompromised patients and those with implantable medical devices [3]. The ability of *Staphylococcus spp.* to cause disease has been ascribed to immune evasion, including avoidance of opsonophagocytosis [4]. SE lacks genome islands found in *S. aureus* (SA) encoding pathogenesis factors, likely contributing to its lesser virulence [5]. Nevertheless, SE is a frequent cause of bacteremia, especially at the extremes of age, resulting in significant morbidity and mortality [6]. SE attaches to foreign material, interacts with the host extracellular

matrix and elaborates biofilm, reducing deposition of complement/IgG, susceptibility to host antimicrobial peptides and neutrophil-mediated killing [3,7,8].

Characterization of the Toll-like receptor (TLR) system [9,10,11,12] has paved the way for studies implicating TLR2 in recognition of Gram-positive bacteria [9,10,13]. However, additional recognition pathways of Gram-positive bacteria include  $\beta$ -integrins [14,15], lectins [16], CD36 [17], and nucleotide oligomerization domain proteins 1 and 2 (NOD1 and -2) [18], members of the NOD-like receptor (NLR) family of cytosolic sensors [19]. SA-derived factors activate NODs1 and -2 and the NLRP3 inflammasome [18,20] and NOD2 contributes to cutaneous defense against live SA *in vivo* [21].

There is evidence both in favor and against a role for TLR2 in host defense against several Gram-positive bacteria, including SA

[18,22,23,24]. The complexity of the data may relate to distinct routes of infection in murine models- e.g., i.p. vs. i.v. [22,25], differences in bacterial preparations (e.g., live vs. killed) and inoculum size, and differences in innate immunity between mice and humans [26]. Live SA subverts TLR2 to inhibit superoxide production by murine macrophages thereby prolonging survival of SA in phagosomes [23]. Thus the roles of TLR2 in innate responses to SA are context dependent, and may include detrimental roles in infection outcome.

SE also engages the innate immune system [6]. Killed SE preparations induce cytokine production from human peripheral blood mononuclear cells *in vitro* [27,28,29,30], and fractions containing SE-derived phenol-soluble modulin peptides (PSMs) induce cytokine production in TLR2-transfected HEK cells and primary murine cells [31,32,33,34]. SE surface polysaccharide intercellular adhesin activates human astrocytoma cells via TLR2 [35]. In contrast, SE-derived peptidoglycan (PG) activates human monocytic THP-1 cells via both TLR2 (polymeric PG) and NOD2 (monomeric PG) [36].

Although SE-derived factors can activate human cultured cells via TLR2 and NOD2, their relative contribution to responses of primary leukocytes to live SE *in vitro* or clearance of SE bacteremia *in vivo*- experimental settings that may most closely mimic clinical infection- are undefined. As bacteremia is the major clinical manifestation of SE infection, characterizing bloodstream clearance mechanisms is a priority. We therefore investigated the interaction of live SE with TLR2, studying both human and murine cells *in vitro* and intravenous infection of mice *in vivo*, thereby avoiding potential limitations inherent to study of killed bacteria, isolated bacteria-derived factors, or analyses relying on a single mammalian species [26,37]. We demonstrate for the first time that live SE, which elaborates a TLR2-activating soluble factor (SE-S), can activate primary cells via human and murine TLR2 *in vitro* and that TLR2 substantially and selectively contributes to clearance of SE bacteremia *in vivo*.

## Methods

### Ethics statement

Blood was collected from healthy donors after written informed consent in accordance with the institutional review board-approved study protocols of Children's hospital Boston (X07-05-0223). All animal protocols were approved by the Animal Care and Use Committee of Children's Hospital Boston (08-11-1261R).

### Bacteria

Wild-type (WT) SE strain 1457, obtained from a patient with an infected central venous catheter [38], was grown to mid-log phase in Brain Heart Infusion Broth (PathWest, Perth, Australia), collected by centrifugation and resuspended in pyrogen-free PBS. Lipopolysaccharide (LPS) contamination of SE preparations was excluded by *Limulus* amoebocyte lysate assay (Associates of Cape Cod, East Falmouth, MA) and lack of response by TLR4-transfected HEK293 cells (Invivogen, San Diego, CA). For study of the SE-derived soluble factor (SE-S), SE were grown overnight in trypticase soy broth (TSB), centrifuged at 2900×g at 4°C for 5 min and the supernatant filtered (0.2 μm) and stored at -20°C until use.

### TLR agonists

TLR agonists used in this study included fibroblast-stimulating lipopeptide-1 (FSL-1, TLR2/6, 1 μg/ml; InvivoGen), ultra-pure LPS from *Salmonella minnesota* devoid of TLR2-stimulating activity (TLR4; 100 ng/ml; List Biological Laboratories, Campbell, CA).

### Whole Blood

Blood was collected either in sodium heparin tubes (Vacutainer; Becton Dickinson or Greiner, Kremsmünster, Austria) and tested whole, or mixed 1:1 with RPMI 1640 (Gibco, Life Technology, Paisley, Scotland) prior to culture in polypropylene tubes or in round-bottom 96-well plates (Corning Incorporated) at 37°C/5% CO<sub>2</sub>. Culture supernatants were harvested and stored at -20°C.

### Antibody blocking

Heparinized whole blood was incubated with 10 μg/ml neutralizing, azide- and antibiotic-free, IgA mAbs to human TLR2 or TLR4 (Invivogen) for 30 min prior to addition of FSL-1 (1 μg/ml), LPS (100 ng/ml) or SE (10<sup>6</sup>/ml). After 4 h, culture supernatants were harvested and stored at -20°C prior to IL-6 ELISA. To exclude effects on bacterial viability, blood was plated onto blood agar plates and CFUs enumerated, after overnight incubation (37°C/5% CO<sub>2</sub>). For blocking SE-S, whole blood was incubated with neutralizing azide-free rat polyclonal Abs against human TLR2, TLR4, TLR6 or isotype control (Invivogen) for 30 min prior to addition of stimulus. After 18 h, culture supernatants were harvested and stored at -20°C.

### TLR-transfected human embryonic kidney cells

Stable cell lines of human embryonic kidney (HEK)-293 cells transfected with TLR2 or TLR4/MD2 were cultured in supplemented DMEM containing 10% heat-inactivated FCS and 10 μg/ml ciprofloxacin [39]. After antibiotic removal, cells were stimulated with SE (10<sup>6</sup>-10<sup>8</sup> bacteria/ml) or pure TLR agonists for 24 h (5%CO<sub>2</sub>, 37°C), and cell culture supernatants harvested for storage at -20°C.

### Cytokine Assays

Human cytokines were measured by time resolved fluorometry (TRF; IL-6), commercial ELISA (IL-8 and IL-6; eBioscience, San Diego, CA) per manufacturers' instructions, using Maxisorp flat-bottom plates (Nunc, Roskilde, Denmark) [40] or by employing multi-analyte fluorometric beads (Milliplex, Millipore) on a Luminex xMAP system (Luminex Corp., Austin, TX) using BeadView Multiplex Software v.1 (Upstate Cell Signaling Solutions, Temecula, CA).

### Mice

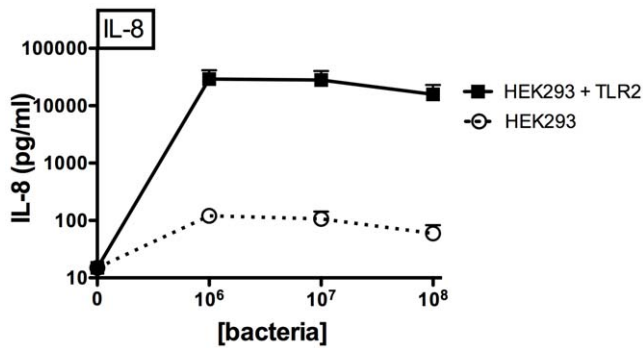
TLR2-deficient (Jackson laboratories; Bar Harbor, ME) and C57BL/6 WT (Taconic; Hudson, NY) female mice were confirmed by genotype (PCR) and phenotype (impaired peritoneal macrophage response to FSL-1 with preserved response to LPS) and matched for age.

### Bacteremia Model

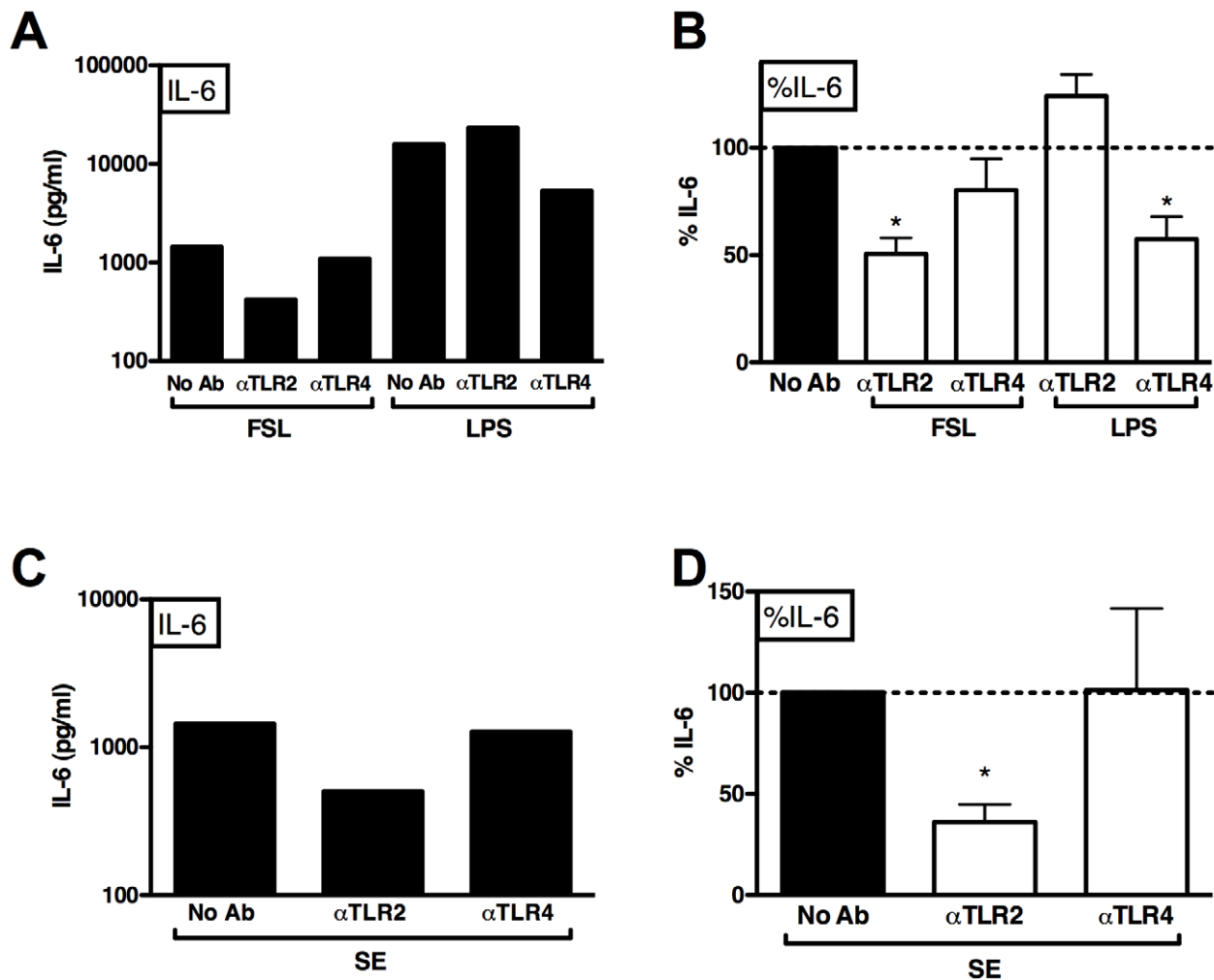
Adult mice 7-12 weeks old were injected i.v. with 10<sup>8</sup> SE. Blood was collected by submandibular bleed at 1, 4, 24 and 48 h post-infection. For cytokine analysis, blood was diluted (5 volumes RPMI) and plasma collected (1200×g at 4°C; 5 min) and stored at -20°C.

### Primary peritoneal macrophages

Murine macrophages were obtained from the peritoneal cavity of mice 3 days after i.p. thioglycollate injection. Adherent cells were maintained in DMEM supplemented with 10% FCS and ciprofloxacin (10 μg/ml) at 5% CO<sub>2</sub>/37°C. Following ciprofloxacin removal by washing with PBS, cells were stimulated with SE (10<sup>4</sup>-10<sup>8</sup>/ml) for 4 h and cell culture supernatants stored at -20°C.



**Figure 1. Transfection of human embryonic kidney cells with TLR2 confers responsiveness to live SE.** Transfection of HEK293 cells with TLR2 enhanced SE-induced IL-8 production after 24 h of stimulation (n=3). doi:10.1371/journal.pone.0010111.g001



**Figure 2. Neutralizing anti-TLR2 antibody inhibit SE-induced cytokine production in human blood.** Blocking anti-TLR IgA Abs were added to human whole blood (10  $\mu$ g/ml) 30 min prior to stimulation with SE ( $10^6$ /ml) for 4 h and extracellular IL-6 measured by ELISA. (A) Anti-TLR2 Ab selectively inhibited FSL-, but not LPS-induced IL-6 production (representative of four similar experiments). (B) Composite analysis of inhibition expressed as %IL-6 production relative to control (no Ab); n=4; (C) Selective inhibition of SE-induced IL-6 by anti-TLR2, but not anti-TLR4 Ab (representative of 4 similar experiments). (D) Composite analysis of inhibition expressed as %IL-6 production, relative to control (no Ab). 1 sample-t-test vs. 100% (n=4); \* p<0.05. doi:10.1371/journal.pone.0010111.g002

### Trans-well assays

SE were added to the upper chamber of a 0.4  $\mu$ m trans-well system in a 24 well plate (Corning Costar; Acton, MA) in DMEM with 10% FCS for 4 h. There were no live SE found in lower chamber. Cell culture supernatants were harvested and stored at  $-20^{\circ}\text{C}$  prior to cytokine measurement.

### Murine cytokines

Murine cytokines were determined by ELISA (TNF and IL-6; R&D Systems; Minneapolis, MN) or by employing multi-analyte fluometric beads (Milliplex, Millipore) on a Luminex xMAP system (Luminex Corp., Austin, TX) using BeadView Multiplex Software v.1 (Upstate Cell Signaling Solutions, Temecula, CA).

### Statistical Analyses

Statistical analyses employed Graphpad Prism v5.0 for Macintosh (GraphPad, La Jolla, CA). Unless stated otherwise in the figure legend, comparisons between 2 groups were by the Mann-Whitney U test and those between >2 groups were by the

Kruskal-Wallis test with Dunn's post-test. P-values <0.05 were considered statistically significant.

## Results

### Transfection of TLR2 into HEK cells confers responsiveness to SE

We first confirmed that live SE could engage TLR2 to induce cytokine production by assessing TLR2-transfected HEK cells. TLR2-transfected HEK cells demonstrated dramatically increased IL-8 production in response to SE (Fig. 1), indicating that live SE engages TLR2. In contrast, transfection of HEK cells with TLR4/MD-2 did not enhance SE-induced IL-8 production (data not shown).

### SE-induced cytokine production is inhibited by blocking TLR2 in whole blood

To assess the potential role of TLR2 in SE-induced innate immune responses in human blood, we investigated the effect of blocking anti-TLR Abs on SE-induced IL-6 production in human whole blood (Fig. 2). Pre-incubation of human whole blood with neutralizing anti-TLR2 and TLR4 Abs (10  $\mu$ g/ml) inhibited cytokine responses to FSL-1 and LPS, respectively (Fig 2A & B).

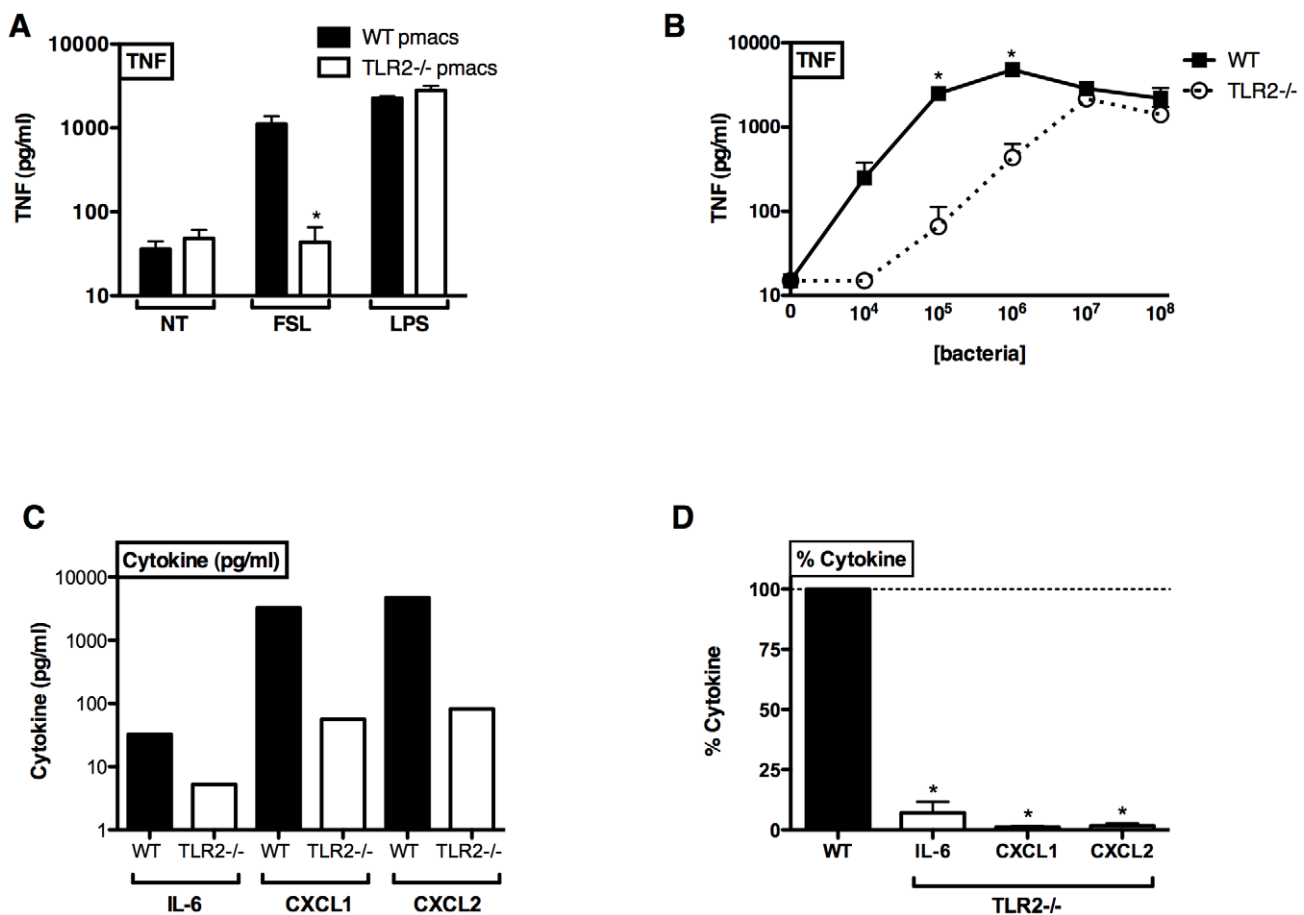
Pre-incubation of human whole blood with anti-TLR2 Ab inhibited SE-induced IL-6 production by >50%, whereas pre-incubation with anti-TLR4 had no effect (Fig. 2C & D).

### Impaired SE-induced TNF production in TLR2<sup>-/-</sup> murine peritoneal macrophages

We subsequently measured cytokine responses to SE in peritoneal macrophages derived from wild-type and TLR2-deficient mice. As expected, TLR2-deficient peritoneal macrophages demonstrated marked impairment in TNF production in response to FSL-1 (TLR2/6) but equivalent response to LPS (TLR4) (Fig. 3A). TLR2-deficient macrophages demonstrated marked impairment in SE-induced TNF, particularly at lower concentrations of SE tested ( $10^4$ – $10^6$  CFU/ml; Fig. 3B). In contrast, TNF responses to high concentrations of SE ( $10^7$ – $10^8$ ) were largely TLR2-independent (Fig. 3B). Four hours after infection with  $10^5$  LSE, TLR2-deficient macrophages also demonstrated diminished production of IL-6, as well as the chemokines CXCL1 and CXCL2 (Fig. 3C & D).

### SE secretes a soluble TLR2 agonist

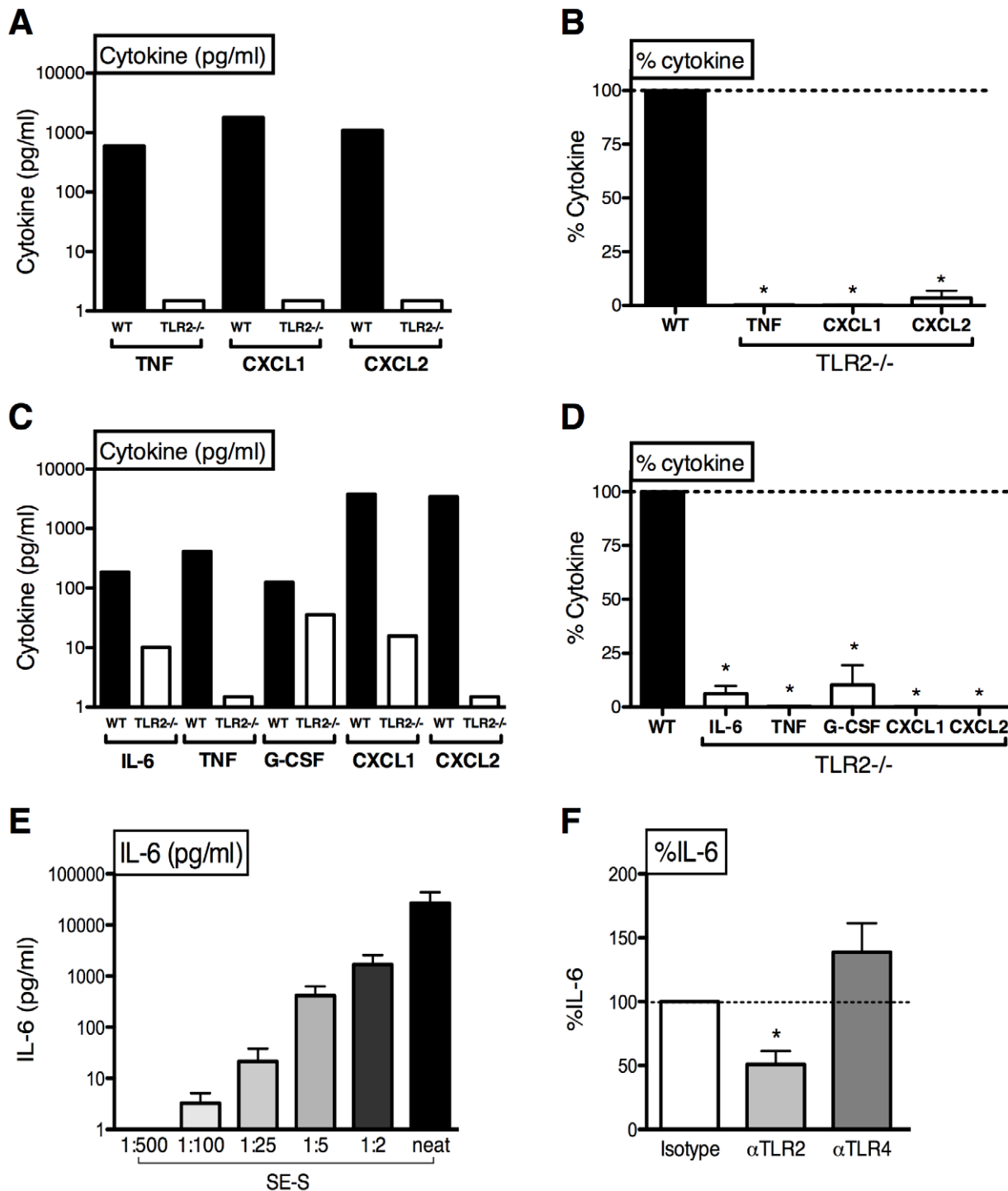
We next assessed whether the TLR2 agonist activity of SE may be released as a soluble factor. In trans-well experiments in which



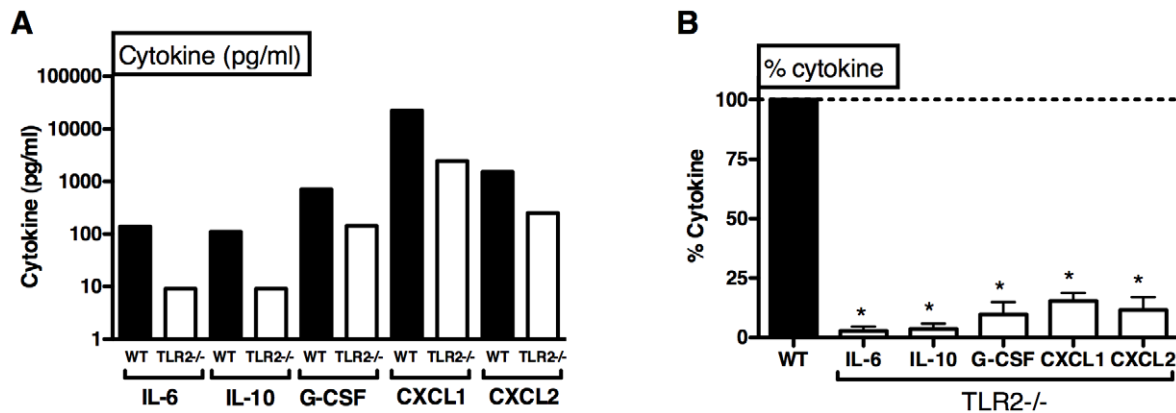
**Figure 3. Impaired SE-induced cytokine production from primary TLR2<sup>-/-</sup> murine peritoneal macrophages.** Primary murine peritoneal macrophages (pmacs) from WT and TLR2-deficient C57BL/6 mice were stimulated with SE for 4 h. (A) Selectively impaired bacterial lipopeptide FSL-1-induced cytokine response in TLR2-deficient pmacs, with normal responses to LPS (TLR4). (B) TLR2-deficient pmacs demonstrated markedly impaired TNF production to low concentrations ( $10^4$ – $10^6$  bacteria/ml) of SE ( $n=3$ – $9$ ). \*  $p<0.05$ . (C) SE-induced production of IL-6, CXCL1, and CXCL2 was lower in TLR2-deficient pmacs (representative of 3 similar experiments). (D) Composite analysis demonstrating % cytokine production of TLR2-deficient pmacs relative to WT ( $n=3$ , one-sample t-test versus 100%). \* $p<0.05$ . doi:10.1371/journal.pone.0010111.g003

SE were placed in the upper chamber, wild-type murine macrophages in the lower chamber produced TNF, CXCL1 and CXCL2 suggesting the secretion of a soluble factor that could

traverse the semi-permeable membrane (Fig. 4A). This SE-derived secreted factor (SE-S) was highly TLR2-dependent as responses of TLR2-deficient macrophages were dramatically impaired (Fig. 4A,



**Figure 4. A soluble factor from SE activates cytokine production in a TLR2-dependent manner.** (A) SE in a trans-well upper chamber induced cytokine production in WT, but not TLR2-deficient murine peritoneal macrophages (pmacs; representative of 3 similar experiments); (B) Composite trans-well analysis expressed as %IL-6 production in TLR2-deficient vs. WT pmacs (n=3, 1-sample t-test vs. 100%); (C) Filtered supernatants of stationary phase SE contain a soluble factor (SE-S) which induced diminished cytokine/chemokine production from TLR2-deficient pmacs (representative of 3 similar experiments); (D) composite analysis of SE-S-induced cytokine/chemokine production in TLR2-deficient vs. WT pmacs (n=3, one-sample t-test versus 100%). (E) SE-S induced concentration-dependent IL-6 production in human whole blood, (F) neutralizing anti-TLR2 polyclonal Abs, but not anti-TLR4 polyclonal Abs, blunted SE-S-induced IL-6 in human whole blood. \* p<0.05. doi:10.1371/journal.pone.0010111.g004



**Figure 5. SE-induced cytokine production is TLR2-dependent *in vivo*.** Female C57BL/6 WT or TLR2-deficient mice were injected intravenously with  $10^8$  CFU SE prior to collection of peripheral blood at 1 h for measurement of cytokines/chemokines by using multi-analyte fluometric beads as described in Methods. (A) SE-induced production of cytokines/chemokines is lower in TLR2-deficient mice (representative of 3 similar experiments). (B) Composite analysis demonstrating % cytokine production of TLR2-deficient mice relative to WT ( $n = 3$ , one-sample t-test versus 100%). \* $p < 0.05$ . doi:10.1371/journal.pone.0010111.g005

and composite analysis in Fig. 4B). Accordingly, TLR2-deficient pmacs demonstrated impaired SE-S-induced cytokine and chemokine production (Fig. 4C & D). SE-S also induced IL-6 production in human whole blood in a concentration-dependent manner (Fig. 4E), an activity that was inhibited by neutralizing anti-TLR2 Abs (Fig. 4F).

#### SE-induced cytokine production *in vivo* is mediated via TLR2

To test whether TLR2 contributes to SE-induced cytokine production in peripheral blood *in vivo*, we injected SE i.v. to wild-type or TLR2-deficient mice then measured cytokine production by collecting blood plasma at 1 h (Fig. 5). TLR2-deficient mice demonstrated markedly diminished production of IL-6, IL-10, G-CSF, CXCL1 and CXCL2 *in vivo* (Fig. 5A), that was significant upon composite analysis (Fig. 5B).

#### TLR2 mediates clearance of SE bacteremia *in vivo*

To assess the role of TLR2 in clearance of SE, C57BL/6 wild-type or TLR2-deficient mice were injected i.v. with SE ( $10^8$  CFU) prior to collection of blood for analysis. TLR2-deficient mice demonstrated impaired clearance of SE bacteremia, with dramatically and significantly higher peripheral blood concentrations of SE at 24 and 48 h (Fig. 6).

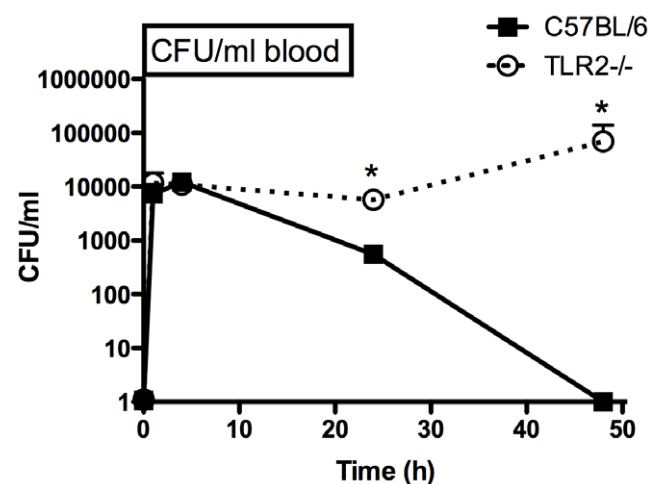
#### Discussion

We have demonstrated for the first time the importance of TLR2 in recognition of live SE as measured by whole blood cytokine production and highlight a selective role of TLR2 in clearance of SE bacteremia. TLR2 mediated SE-induced cytokine production in TLR2-transfected HEK cells, human whole blood, and murine primary peritoneal macrophages. TLR2-deficient mice injected intravenously with SE demonstrated reduced early (1 h) cytokine/chemokine induction and selectively and markedly impaired subsequent clearance of bacteremia at 24–48 h.

SE releases an as yet unidentified soluble factor (SE-S) that activates both human and murine cells via TLR2 (Fig. 4C & D). We speculate that release of SE-S may contribute to responses to SE *in vivo*. Indeed, our evidence that TLR2 plays a prominent role in recognition of, and responses to, SE is consistent with the ability of SE-derived surface components to induce inflammation [41],

including TLR2 agonists such as PSM [31,33], surface polysaccharide intercellular adhesin [35] and peptidoglycan [36]. Whether the SE-S activity detected in our present study reflects these or other molecules [42] will be the subject of future work.

Impaired production of cytokines in response to intravenous SE was associated with impaired clearance of bacteremia, suggesting that TLR2-mediated cytokine production may contribute to clearance of SE *in vivo*. In contrast, Raby et al recently reported that after i.p. challenge with SE, administration of inhibitory soluble TLR2 (sTLR2) reduced peritoneal PMN infiltration, but did not reduce bacterial clearance from the peritoneal cavity [32]. Our distinct results likely reflect different routes of bacterial challenge and different approaches to TLR2 inhibition, with genetic ablation providing a more definitive approach. SE engages TLR2, but at high bacterial concentrations can activate primary murine macrophages via a TLR2-independent pathway, indicating engagement of additional pattern recognition pathways, possibly including NLRs and the inflammasome [36,37,43].



**Figure 6. TLR2-deficient mice demonstrate impaired clearance of SE bacteremia.** Female C57BL/6 WT or TLR2-deficient mice were injected i.v. with  $10^8$  CFU of SE prior to collection of peripheral blood at 1, 4, 24 or 48 h for measurement of CFUs by plating serial dilutions ( $n = 4-9$ ); \* $p < 0.05$ . doi:10.1371/journal.pone.0010111.g006



Multiple aspects of our studies of live SE are novel: a) SE (and SE-S) activates cytokine production via TLR2 in human whole blood, b) TLR2 is particularly important in detecting low concentrations of SE in primary murine macrophages, whereas high concentrations of SE can activate these cells in a TLR2-independent manner, c) TLR2 mediates early (1 h) cytokine production after i.v. challenge with SE *in vivo* and d) TLR2 plays a crucial and selective role in mediating subsequent clearance of SE bacteremia at 24–48 h *in vivo*. We speculate that in TLR2-deficient animals, reduced production of early (1 h) plasma cytokines, including IL-6, impairs subsequent clearance of staphylococci, as has also been suggested in humans with neutralizing anti-IL-6 auto-antibodies [44].

In conclusion, our study is the first to demonstrate the importance of TLR2 in recognition of live SE in whole blood, a key site of SE infection, *in vitro* and *in vivo*. We have demonstrated a selective role of TLR2 in clearance of SE bacteremia, the most common, harmful and costly clinical manifestation of SE infection [3,4]. Our study may inform efforts to develop novel adjunctive approaches to prevent and/or treat SE infection [45]. Novel TLR2 antagonists in biopharmaceutical development may reduce SE-induced inflammation, but may also impair clearance of SE

bacteremia. Conversely, enhancing TLR2-mediated host defense may hasten clearance of SE bacteremia; consistent with protection against bacteremia afforded by hypermorphic alleles of TIRAP, a signaling molecule downstream of TLR2 [46]. Future studies should define the roles of TLR2 in susceptibility of immunocompromised populations, particularly those at the extremes of age, to SE bacteremia [6].

## Acknowledgments

We thank Drs. Michael Wessels, Raif Geha, Richard Malley, Anthony Keil and Peter Campbell for mentorship and intellectual input. David Atlas, Cristina Farrar (Dept. Clinical Microbiology PathWest, Princess Margaret Hospital for Children), and the research assistants of the School of Paediatrics and Child Health Vaccine Trials Group provided expert technical assistance.

## Author Contributions

Conceived and designed the experiments: TS MRPC AJC PR DB OL. Performed the experiments: TS MRPC LSB LCG. Analyzed the data: TS MRPC LSB LCG. Contributed reagents/materials/analysis tools: DTG MO OL. Wrote the paper: TS MRPC OL.

## References

- Karchmer AW, Bayer AS (2008) Methicillin-resistant *Staphylococcus aureus*: an evolving clinical challenge. *Clin Infect Dis* 46 Suppl 5: S342–343.
- Venkatesh MP, Placencia F, Weisman LE (2006) Coagulase-negative staphylococcal infections in the neonate and child: an update. *Semin Pediatr Infect Dis* 17: 120–127.
- Otto M (2008) Staphylococcal biofilms. *Curr Top Microbiol Immunol* 322: 207–228.
- Foster TJ (2005) Immune evasion by staphylococci. *Nat Rev Microbiol* 3: 948–958.
- Gill SR, Fouts DE, Archer GL, Mongodin EF, Deboy RT, et al. (2005) Insights on evolution of virulence and resistance from the complete genome analysis of an early methicillin-resistant *Staphylococcus aureus* strain and a biofilm-producing methicillin-resistant *Staphylococcus epidermidis* strain. *J Bacteriol* 187: 2426–2438.
- Strunk T, Richmond P, Simmer K, Currie A, Levy O, et al. (2007) Neonatal immune responses to coagulase-negative staphylococci. *Curr Opin Infect Dis* 20: 370–375.
- Kristian SA, Birkenstock TA, Sauder U, Mack D, Gotz F, et al. (2008) Biofilm formation induces C3a release and protects *Staphylococcus epidermidis* from IgG and complement deposition and from neutrophil-dependent killing. *J Infect Dis* 197: 1028–1035.
- von Eiff C, Peters G, Heilmann C (2002) Pathogenesis of infections due to coagulase-negative staphylococci. *Lancet Infect Dis* 2: 677–685.
- Wetzler LM (2003) The role of Toll-like receptor 2 in microbial disease and immunity. *Vaccine* 21 Suppl 2: S55–60.
- Royet J, Dziarski R (2007) Peptidoglycan recognition proteins: pleiotropic sensors and effectors of antimicrobial defences. *Nat Rev Microbiol* 5: 264–277.
- Akira S (2006) TLR signaling. *Curr Top Microbiol Immunol* 311: 1–16.
- O'Neill LA (2008) When signaling pathways collide: positive and negative regulation of toll-like receptor signal transduction. *Immunity* 29: 12–20.
- Henneke P, Dramsi S, Mancuso G, Chraïbi K, Pellegrini E, et al. (2008) Lipoproteins are critical TLR2 activating toxins in group B streptococcal sepsis. *J Immunol* 180: 6149–6158.
- Cuzzola M, Mancuso G, Beninati C, Biondo C, Genovese F, et al. (2000) Beta 2 integrins are involved in cytokine responses to whole Gram-positive bacteria. *Journal of Immunology* 164: 5871–5876.
- Levy O, Jean-Jacques R, Cywes C, Sisson R, Zarembek KA, et al. (2003) Critical role of the complement system in Group B streptococcus-induced tumor necrosis factor alpha release. *Infect Immun* 71: 6344–6353.
- Albanyan EA, Edwards MS (2000) Lectin site interaction with capsular polysaccharide mediates nonimmune phagocytosis of type III group B streptococci. *Infect Immun* 68: 5794–5802.
- Stuart LM, Deng J, Silver JM, Takahashi K, Tseng AA, et al. (2005) Response to *Staphylococcus aureus* requires CD36-mediated phagocytosis triggered by the COOH-terminal cytoplasmic domain. *J Cell Biol* 170: 477–485.
- Kapetanovic R, Nahori MA, Balloy V, Fitting C, Philpott DJ, et al. (2007) Contribution of phagocytosis and intracellular sensing for cytokine production by *Staphylococcus aureus*-activated macrophages. *Infect Immun* 75: 830–837.
- Shaw MH, Reimer T, Kim YG, Nunez G (2008) NOD-like receptors (NLRs): bona fide intracellular microbial sensors. *Curr Opin Immunol* 20: 377–382.
- Munoz-Planillo R, Franchi L, Miller LS, Nunez G (2009) A critical role for hemolysins and bacterial lipoproteins in *Staphylococcus aureus*-induced activation of the Nlrp3 inflammasome. *J Immunol* 183: 3942–3948.
- Hruz P, Zinkernagel AS, Jenikova G, Botwin GJ, Hugot JP, et al. (2009) NOD2 contributes to cutaneous defense against *Staphylococcus aureus* through alpha-toxin-dependent innate immune activation. *Proc Natl Acad Sci U S A* 106: 12873–12878.
- Skerrett SJ, Liggitt HD, Hajjar AM, Wilson CB (2004) Cutting edge: myeloid differentiation factor 88 is essential for pulmonary host defense against *Pseudomonas aeruginosa* but not *Staphylococcus aureus*. *J Immunol* 172: 3377–3381.
- Watanabe I, Ichiki M, Shiratsuchi A, Nakanishi Y (2007) TLR2-mediated survival of *Staphylococcus aureus* in macrophages: a novel bacterial strategy against host innate immunity. *J Immunol* 178: 4917–4925.
- Knuefermann P, Sakata Y, Baker JS, Huang CH, Sekiguchi K, et al. (2004) Toll-like receptor 2 mediates *Staphylococcus aureus*-induced myocardial dysfunction and cytokine production in the heart. *Circulation* 110: 3693–3698.
- Takeuchi O, Hoshino K, Akira S (2000) Cutting edge: TLR2-deficient and MyD88-deficient mice are highly susceptible to *Staphylococcus aureus* infection. *Journal of Immunology* 165: 5392–5396.
- Mestas J, Hughes CC (2004) Of mice and not men: differences between mouse and human immunology. *J Immunol* 172: 2731–2738.
- Hartel C, Osthus I, Rupp J, Haase B, Roder K, et al. (2008) Characterisation of the host inflammatory response to *Staphylococcus epidermidis* in neonatal whole blood. *Arch Dis Child Fetal Neonatal Ed* 93: F140–F145.
- Robinson WA, Entringer MA, Bolin RW, Stonington OG, Jr. (1977) Bacterial stimulation and granulocyte inhibition of granulopoietic factor production. *N Engl J Med* 297: 1129–1134.
- Stuyt RJ, Kim SH, Reznikov LL, Fantuzzi G, Novick D, et al. (2003) Regulation of *Staphylococcus epidermidis*-induced IFN-gamma in whole human blood: the role of endogenous IL-18, IL-12, IL-1, and TNF. *Cytokine* 21: 65–73.
- Megyeri K, Mandi Y, Degre M, Rosztoczy I (2002) Induction of cytokine production by different *Staphylococcal* strains. *Cytokine* 19: 206–212.
- Hajjar AM, O'Mahony DS, Ozinsky A, Underhill DM, Aderem A, et al. (2001) Cutting edge: functional interactions between toll-like receptor (TLR) 2 and TLR1 or TLR6 in response to phenol-soluble modulins. *Journal of Immunology* 166: 15–19.
- Raby AC, Le Boudier E, Colmont C, Davies J, Richards P, et al. (2009) Soluble TLR2 reduces inflammation without compromising bacterial clearance by disrupting TLR2 triggering. *J Immunol* 183: 506–517.
- Equils O, Schito ML, Karahashi H, Madak Z, Yarali A, et al. (2003) Toll-like receptor 2 (TLR2) and TLR9 signaling results in HIV-1 long terminal repeat trans-activation and HIV replication in HIV-1 transgenic mouse spleen cells: implications of simultaneous activation of TLRs on HIV replication. *J Immunol* 170: 5159–5164.
- Otto M, O'Mahoney DS, Guina T, Klebanoff SJ (2004) Activity of *Staphylococcus epidermidis* phenol-soluble modulin peptides expressed in *Staphylococcus carnosus*. *J Infect Dis* 190: 748–755.
- Stevens NT, Sadovskaya I, Jabbouri S, Sattar T, O'Gara JP, et al. (2008) *Staphylococcus epidermidis* Polysaccharide Intercellular Adhesin induces IL-8



- expression in human astrocytes via a mechanism involving TLR2. *Cell Microbiol.*
36. Natsuka M, Uehara A, Shuhua Y, Echigo S, Takada H (2008) A polymer-type water-soluble peptidoglycan exhibited both Toll-like receptor 2- and NOD2-agonistic activities, resulting in synergistic activation of human monocytic cells. *Innate Immun* 14: 298–308.
  37. Gekara NO, Dietrich N, Lyszkiewicz M, Lienenklaus S, Weiss S (2009) Signals triggered by a bacterial pore-forming toxin contribute to toll-like receptor redundancy in gram-positive bacterial recognition. *J Infect Dis* 199: 124–133.
  38. Mack D, Siemssen N, Laufs R (1992) Parallel induction by glucose of adherence and a polysaccharide antigen specific for plastic-adherent *Staphylococcus epidermidis*: evidence for functional relation to intercellular adhesion. *Infect Immun* 60: 2048–2057.
  39. Latz E, Visintin A, Lien E, Fitzgerald KA, Monks BG, et al. (2002) Lipopolysaccharide rapidly traffics to and from the Golgi apparatus with the toll-like receptor 4-MD-2-CD14 complex in a process that is distinct from the initiation of signal transduction. *Journal of Biological Chemistry* 277: 47834–47843.
  40. Rowe J, Heaton T, Kusel M, Suriyaarachchi D, Serralha M, et al. (2004) High IFN-gamma production by CD8+ T cells and early sensitization among infants at high risk of atopy. *J Allergy Clin Immunol* 113: 710–716.
  41. McLoughlin RM, Witowski J, Robson RL, Wilkinson TS, Hurst SM, et al. (2003) Interplay between IFN-gamma and IL-6 signaling governs neutrophil trafficking and apoptosis during acute inflammation. *J Clin Invest* 112: 598–607.
  42. McCurdy JD, Olynch TJ, Maher LH, Marshall JS (2003) Cutting edge: distinct Toll-like receptor 2 activators selectively induce different classes of mediator production from human mast cells. *J Immunol* 170: 1625–1629.
  43. Cole LE, Santiago A, Barry E, Kang TJ, Shirey KA, et al. (2008) Macrophage proinflammatory response to *Francisella tularensis* live vaccine strain requires coordination of multiple signaling pathways. *J Immunol* 180: 6885–6891.
  44. Puel A, Picard C, Lorrot M, Pons C, Chrabieh M, et al. (2008) Recurrent staphylococcal cellulitis and subcutaneous abscesses in a child with autoantibodies against IL-6. *J Immunol* 180: 647–654.
  45. Schaffer AC, Lee JC (2009) Staphylococcal vaccines and immunotherapies. *Infect Dis Clin North Am* 23: 153–171.
  46. Ferwerda B, Alonso S, Banahan K, McCall MB, Giamarellos-Bourboulis EJ, et al. (2009) Functional and genetic evidence that the Mal/TIRAP allele variant 180L has been selected by providing protection against septic shock. *Proc Natl Acad Sci U S A* 106: 10272–10277.