



# Improving dietary quality in youth with type 1 diabetes: randomized clinical trial of a family-based behavioral intervention

## Citation

Nansel, Tonja R, Lori M B Laffel, Denise L Haynie, Sanjeev N Mehta, Leah M Lipsky, Lisa K Volkening, Deborah A Butler, Laurie A Higgins, and Aiyi Liu. 2015. "Improving dietary quality in youth with type 1 diabetes: randomized clinical trial of a family-based behavioral intervention." *The International Journal of Behavioral Nutrition and Physical Activity* 12 (1): 58. doi:10.1186/s12966-015-0214-4. <http://dx.doi.org/10.1186/s12966-015-0214-4>.

## Published version

<https://doi.org/10.1186/s12966-015-0214-4>

## Link

<http://nrs.harvard.edu/urn-3:HUL.InstRepos:16120979>

## Terms of use

This article was downloaded from Harvard University's DASH repository, and is made available under the terms and conditions applicable to Other Posted Material (LAA), as set forth at

<https://harvardwiki.atlassian.net/wiki/external/NGY5NDE4ZjgzNTc5NDQzMGIzZWZhMGFIOWI2M2EwYTg>

## Accessibility

<https://accessibility.huit.harvard.edu/digital-accessibility-policy>

## Share Your Story

The Harvard community has made this article openly available.

Please share how this access benefits you. [Submit a story](#)

RESEARCH

Open Access

# Improving dietary quality in youth with type 1 diabetes: randomized clinical trial of a family-based behavioral intervention

Tonja R Nansel<sup>1\*</sup>, Lori M B Laffel<sup>2</sup>, Denise L Haynie<sup>1</sup>, Sanjeev N Mehta<sup>2</sup>, Leah M Lipsky<sup>1</sup>, Lisa K Volkening<sup>2</sup>, Deborah A Butler<sup>2</sup>, Laurie A Higgins<sup>2</sup> and Aiyi Liu<sup>1</sup>

## Abstract

**Background:** Diets of children with type 1 diabetes are low in fruits, vegetables, and whole grains, and high in foods of minimal nutritional value, increasing risk for future adverse health outcomes. This 18-month randomized clinical trial tested the effect of a family-based behavioral intervention integrating motivational interviewing, active learning, and applied problem-solving on the primary outcomes of dietary intake and glycemic control among youth with type 1 diabetes.

**Methods:** A parallel-group study with equal randomization was conducted at an outpatient, free-standing, multidisciplinary tertiary diabetes center in the United States. Eligible youth were those age 8–16 years with type 1 diabetes diagnosis  $\geq 1$  year and hemoglobin A1c (HbA1c)  $\geq 6.5\%$  and  $\leq 10.0\%$ . Participants were 136 parent-youth dyads (treatment  $n = 66$ , control  $n = 70$ ). The intervention consisted of 9 in-clinic sessions delivered to the child and parent; control condition comprised equivalent assessments and number of contacts without dietary advice. Dietary intake was assessed using 3-day diet records at 6 time points across the 18-month study. Dietary outcomes included the Healthy Eating Index-2005 (HEI2005; index measuring conformance to the 2005 United States Dietary Guidelines for Americans) and Whole Plant Food Density (WPFd; number of cup or ounce equivalents per 1000 kcal of whole grains, whole fruit, vegetables, legumes, nuts, and seeds consumed). HbA1c was obtained every 3 months. Overall comparison of outcome variables between intervention and usual care groups was conducted using permutation tests.

**Results:** There was a positive intervention effect across the study duration for HEI2005 ( $p = .015$ ) and WPFd ( $p = .004$ ). At 18 months, HEI2005 was 7.2 greater (mean  $\pm$  SE  $64.6 \pm 2.0$  versus  $57.4 \pm 1.6$ ), and WPFd was 0.5 greater ( $2.2 \pm 0.1$  versus  $1.7 \pm 0.1$ ) in the intervention group versus control. There was no difference between groups in HbA1c across the study duration.

**Conclusions:** This behavioral nutrition intervention improved dietary quality among youth with type 1 diabetes, but did not impact glycemic control. Findings indicate the potential utility of incorporating such strategies into clinical care, and suggest that improvement in diet quality can be achieved in families living with this burdensome disease.

**Trial registration:** Clinicaltrials.gov registration number: NCT00999375

**Keywords:** Behavioral intervention, Nutrition, Diet, Type 1 diabetes, Children, Adolescents

\* Correspondence: nanselt@mail.nih.gov

<sup>1</sup>Health Behavior Branch, Division of Intramural Population Health Research, Eunice Kennedy Shriver National Institute of Child Health and Human Development, 6100 Executive Blvd. Rm 7B13R, MSC 7510 Bethesda, MD, USA  
Full list of author information is available at the end of the article

## Introduction

Medical nutrition therapy is an integral component of diabetes management education to facilitate optimal glycemic control and prevention of complications [1]. Nutrition education for this population includes education on carbohydrate estimation as well as recommendations for general healthful eating [1,2]. Nevertheless, the diets of youth with type 1 diabetes (T1D) are characterized by patterns known to increase risk for certain chronic diseases [3]. Intake of fruits, vegetables, and whole grains are far below dietary recommendations [4,5]. Intake of total and saturated fat is above recommendations [6,7], and a substantial proportion of daily energy intake is obtained from refined grains and discretionary foods such as chips and sweets [5].

Previous research indicates the critical role of diet in promoting long-term health among persons with type 1 diabetes, including reducing risk of cardiovascular disease. Cardiovascular disease is more common, occurs earlier, and is the primary cause of premature mortality in persons with T1D [8,9]. This increased risk begins early in the disease process, with children and adolescents with T1D demonstrating subclinical cardiovascular abnormalities [9]. In observational studies among persons with T1D, better diet quality is associated with lower blood pressure [10], more optimal LDL/HDL ratio [11], and lower CVD risk profile including lower arterial stiffness [12]. In a study of youth with T1D in Italy, implementation of a Mediterranean-style diet led to improved lipid profiles [13]. Considering the high prevalence of cardiovascular risk factors observed in youth with T1D [14-18], optimal dietary intake is critical for improving long-term health outcomes among this population. The effect of diet quality on glycemic control, however, is not well-established. In an observational study of youth with T1D, better diet quality was associated with lower A1c [19], and in short-term feeding studies, better diet quality has been shown to improve glycemic control [20,21].

Despite suboptimal diet quality among youth with type 1 diabetes and the potential long-term health benefits of improving dietary intake, little previous research has addressed strategies for improving dietary intake in this population. Limited research has tested the efficacy of specific dietary recommendations on health outcomes, including evaluating the effect of a Mediterranean-style diet on lipid profile [13], the effect a low glycemic index diet on glycemic control [22], and the effect of an optimized mixed diet on dietary nutrient composition [23]. These studies utilized educational guidance only; however, it is well-established that optimal methods for achieving dietary change incorporate behavioral strategies along with educational guidance [24]. Behavioral strategies such as self-monitoring, goal-setting, problem-solving, contracting, and motivational interviewing have

demonstrated effectiveness in achieving healthful dietary change in youth in the general population [24]. Additionally, achieving dietary change among youth must consider the key role played by parents, who influence youth's dietary behavior through behaviors such as modeling eating habits and determining what foods are available and accessible in the home [25]. To date, no randomized trial of a behavioral intervention to improve dietary intake among youth with type 1 diabetes has been published. The purpose of this study was to evaluate the efficacy of a family-based behavioral intervention that integrated motivational interviewing, active learning, and applied problem-solving to increase intake of whole plant foods (fruit, vegetables, whole grains, legumes, nuts and seeds) among youth with type 1 diabetes. We hypothesized that the intervention would improve youth diet quality and glycemic control relative to the control condition.

## Subjects and methods

### *Design and participants*

This was a parallel-group study with equal randomization conducted at an outpatient, free-standing, multidisciplinary tertiary diabetes center in Boston, Massachusetts. Eligibility criteria included age 8.0 to 16.9 years, diagnosis of type 1 diabetes  $\geq 1$  year, daily insulin dose  $\geq 0.5$  units per kilogram, most recent HbA1c  $\geq 6.5\%$  and  $\leq 10.0\%$ , intensive insulin therapy with either an insulin regimen of  $\geq 3$  injections daily or insulin pump, at least one clinic visit in the past year, and ability to communicate in English. Exclusion criteria included daily use of premixed insulin, transition to insulin pump therapy in the last three months, real-time continuous glucose monitoring use in the last three months, participation in another intervention study in the last six months, and presence of gastrointestinal disease such as celiac disease, multiple food allergies, use of medications that interfere significantly with glucose metabolism, or significant mental illness.

### *Procedures*

The study was conducted from August 2010 through May 2013. Medical record data were screened to identify eligible patients; recruitment was implemented by trained research staff at regular clinic visits. All youth provided assent; parents and youth turning 18 years old during the 18-month trial provided written informed consent. Randomization was stratified by age ( $<13$  years and  $\geq 13$  years), HbA1c ( $<8.5\%$  and  $\geq 8.5\%$ ), and insulin regimen (injection and insulin pump), with a permuted block randomization scheme. Randomization was conducted by the data coordinating center; group assignment was indicated to the site research assistant by an online data management system, and families were informed of their group assignment at the second study visit.

Families were enrolled in the study for 18 months. Study visits were completed in the clinic; diet records were completed in the home following assessment visits. Youth and parents each received a total of \$380 compensation for completion of all study visits and reimbursement for parking costs. Study procedures followed were approved by the *Eunice Kennedy Shriver* National Institute of Child Health and Human Development Institutional Review Board and the Joslin Diabetes Center Committee on Human Subjects.

### **Treatment conditions**

The intervention content and process was guided by self-regulation perspective [26], social cognitive theory [27], and self-determination theory [28]. Each session integrated a motivational interviewing style of interaction designed to increase internal motivation for healthful eating [29,30], active learning for youth and parents to facilitate skill-building and engagement with the educational information, and applied problem-solving to facilitate goal-directed behavior and self-regulation skills. The intervention was delivered by research assistants who received training in pediatric T1D, intervention procedures, and motivational interviewing. In addition, study investigators provided feedback on audiotaped role-play practice sessions prior to intervention delivery and on a random sample of audiotaped intervention sessions.

Families in the intervention condition received six “core” sessions during the first seven months of the study period. An initial overview session addressed key principles of healthy eating, with a focus on increasing intake of whole plant foods, defined as whole fruits, vegetables, whole grains, legumes, nuts, and seeds. These food groups were emphasized due to their importance in the diet for disease prevention and consistent findings of low intake relative to dietary guidelines [31-33]. Monitoring of carbohydrate intake is central in T1D management [1,2]; the focus on these food groups encourages families to also consider the quality of their sources of carbohydrate. The next five sessions addressed application of these principles to specific eating contexts – breakfast, lunch, dinner, snacks, and eating out (one context per session). Each session included interactive education, learning activities, goal-setting, and application of the problem-solving process to increase intake of fruits, vegetables, whole grains, and/or legumes/nuts/seeds at that eating occasion. Children and parents set goals for increasing intake of two selected food groups, considered barriers, chose strategies, and developed a specific action plan for increasing their intake of the target foods. At each session, families reviewed their progress on the previous session’s goal, allowing previous efforts to inform subsequent problem-solving. Three “booster” sessions delivered during months nine to

fifteen dealt with overcoming challenges associated with social eating, meal planning, and the food environment. Families were provided with a book of approximately 300 recipes highlighting the target food groups and providing detailed nutrition information to assist with insulin dosing. Recipes were selected based on consideration for ease of preparation, acceptability and familiarity. Intervention materials are summarized in the Additional file 1: Table S1 and are available upon request from the corresponding author.

Participants in both groups received intermittent, masked continuous glucose monitoring (CGM) for three consecutive days six times across the study duration, paired with completion of diet records. Following completion of each monitoring period, all subjects received individualized feedback on their CGM results with a diabetes nurse educator or certified diabetes educator. For intervention families, CGM feedback reinforced session content by addressing how glycemic patterns were associated with quality of food ingested, highlighting the effect of food choices on blood glucose levels.

The control condition was designed to match on potentially important aspects of research contact that may impact health outcomes but were not the focus of the behavioral intervention. Participants in the control condition received equal frequency of contacts with research staff, focused on case management (scheduling, confirming, and documenting medical follow-up) within the diabetes health care system in a “care ambassador” model [34], and equal frequency of three-day masked CGM use. Participants in the control condition received no additional dietary advice beyond that provided as part of standard type 1 diabetes care. Scales, measuring cups, and spoons were also provided to all participants to facilitate portion size estimation.

### **Measures**

The child’s usual dietary intake was estimated using three-day food records. Children and parents were instructed on accurately measuring and reporting food and beverage intake and given a sample diet record. Families were instructed to keep records beginning at the time of CGM insertion and continuing for the next three consecutive days. Families were asked to use measuring utensils when at home, and if away from home, to provide their best estimate of portion size. Families were reminded to provide all specific details for each food item, including names of brands or restaurants and specific item labeling (e.g., low fat, 1% milk), and to leave no blank fields on the form. Research staff reviewed the completed records upon receipt from the family to ensure completeness, and solicited missing information (e.g., brand names) from the family as needed. For visits in which a family did not complete a diet record, 2 non-consecutive 24-hour dietary recalls

were obtained by a registered dietician (1.7% of dietary assessments). Diet records were entered by two registered dietitians and verified for consistency and accuracy. Nutrition Data System for Research software (NDSR 2012; Nutrition Coordinating Center, University of Minnesota, Minneapolis, MN) was used to analyze the records and assess nutrient intake and food group servings.

Hemoglobin A1c (HbA1c) was measured using a laboratory assay standardized to the Diabetes Control and Complications Trial (reference range, 4%–6%, [20–42 mmol/mol]). Initial A1c assays were performed with the Tosoh (Tosoh Medics, South San Francisco, CA, USA) followed by the Roche Cobas Integra (Indianapolis, IN). All values obtained with the Tosoh were standardized to the Roche assay. Height, weight, insulin regimen, and frequency of blood glucose monitoring were extracted from the medical records. Demographic characteristics were assessed by parent self-report. The poverty income ratio was calculated as the ratio of reported household income divided by the 2008 US Census poverty threshold for household size and composition adjusted for inflation [35]. This measure accounts for household size when evaluating income, with a higher value indicating greater income.

#### **Primary outcomes and power**

Primary study outcomes were diet quality and glycemic control. Two indicators of overall diet quality were evaluated. The Healthy Eating Index 2005 (HEI2005) score measures conformance to the 2005 Dietary Guidelines for Americans, and is comprised of 12 component scores corresponding to dietary guidelines for intake of total fruit, whole fruit, total vegetables, dark green/orange vegetables and legumes, total grains, whole grains, milk, meat and beans, oils, saturated fat, sodium and energy from solid fat, alcohol and added sugars [36]. The maximum component score is achieved if intake meets recommended intake levels, with truncation for intakes exceeding recommendations. Recommendations and scores are expressed on a per-1000 kilocalorie basis to enable comparability and applicability to individuals regardless of total energy requirements. Component scores are summed to obtain the total score, with possible values ranging from 0–100; a score of 100 indicates meeting intake recommendations for all dietary components. Whole Plant Food Density (WPFDF) is a continuous measure that represents the proportion of the diet allocated to whole grains, whole fruit, vegetables, legumes, nuts, and seeds; calculated as the total number of cup or ounce equivalents of these foods consumed per 1000 kilocalorie total intake [37]. WPFDF was developed by two of the investigators to provide a measure that directly corresponds to the target food groups of the intervention.

A target sample size of 160 participants was selected based on detecting meaningful differences between

intervention and control conditions in dietary intake and HbA1c at 18-month follow-up. At the time of the study development, there were no published data quantifying HEI2005 scores in a cohort of youth with T1D, and the WPFDF had not yet been developed. Based on available data from 67 youth age 2 to 12 years receiving care at the same source population (mean  $\pm$  SD HEI2005  $57.6 \pm 6.5$ ), the sample size provided 97% power to detect a 4 point difference in the HEI2005. Power for detecting treatment effect on HbA1c was based on electronic medical record data from 560 patients at the recruiting clinic site, ages 8–16 years, with HbA1c between 7.5 and 9.5%, inclusive (mean  $\pm$  SD HbA1c  $8.4 \pm 0.6$ ); the target sample provided 88% power to detect a 0.3% difference in HbA1c. Given the small sample size used for power analyses of dietary outcomes, and the later development of the WPFDF, power analyses were subsequently recalculated using data from a larger cross-sectional study of subjects from the same source population [5]. Using a two-sample *t*-test with a two-sided 5% significance level, the power at the achieved sample size of 136 was 83% to detect a difference between groups of 5.5 in HEI2005, 86% to detect a difference between groups of 0.7 in WPFDF, and 93% to detect a difference between groups of 0.5% in HbA1c, assuming a common standard deviation across groups of 10.95 for HEI2005, 1.33 for WPFDF, and 0.84 for HbA1c.

#### **Analysis**

Baseline demographic and disease-related characteristics of the study participants were summarized with means and standard deviations for continuous variables and frequencies for categorical/ordinal variables. Comparison of these variables between intervention and control groups was done using independent *t*-tests for continuous variables or Pearson chi-square for categorical variables.

Mean values for each dietary outcome variable (overall diet quality indicators and individual food groups) at each visit for each treatment condition were estimated by population ratios, which take the ratio of total food group intake to total energy intake at the population (treatment group) level; this method reduces bias in estimates of usual intakes from limited dietary assessment data [38]. The standard errors of each study outcome were estimated using bootstrap with 5000 samples with replacement. Between-group comparison of each outcome was conducted using permutation test. Five-thousand permutations of the combined samples were generated to obtain the permuted *p*-value, that is, the proportion of the permuted samples that yielded a more extreme difference than that observed between intervention and control conditions. Here the difference was defined as the Euclidean distance in the vector of visit-specific population ratios between intervention and control groups; the resulting *p*-value indicates significance of between-group differences

across the study duration. Intent-to-treat analyses were conducted using multiple imputation for missing data, including missing due to subject withdrawal. Analyses were applied to ten complete data sets obtained by replacing the missing outcome values with imputation. Estimates from the imputed samples were then combined to generate a single estimate and p-value [39]. A p-value of less than 0.05 was considered statistically significant. All analyses were performed using either SAS version 9.3 (SAS Institute, Cary, NC) or R version 2.15.1 (The R Foundation for Statistical Computing).

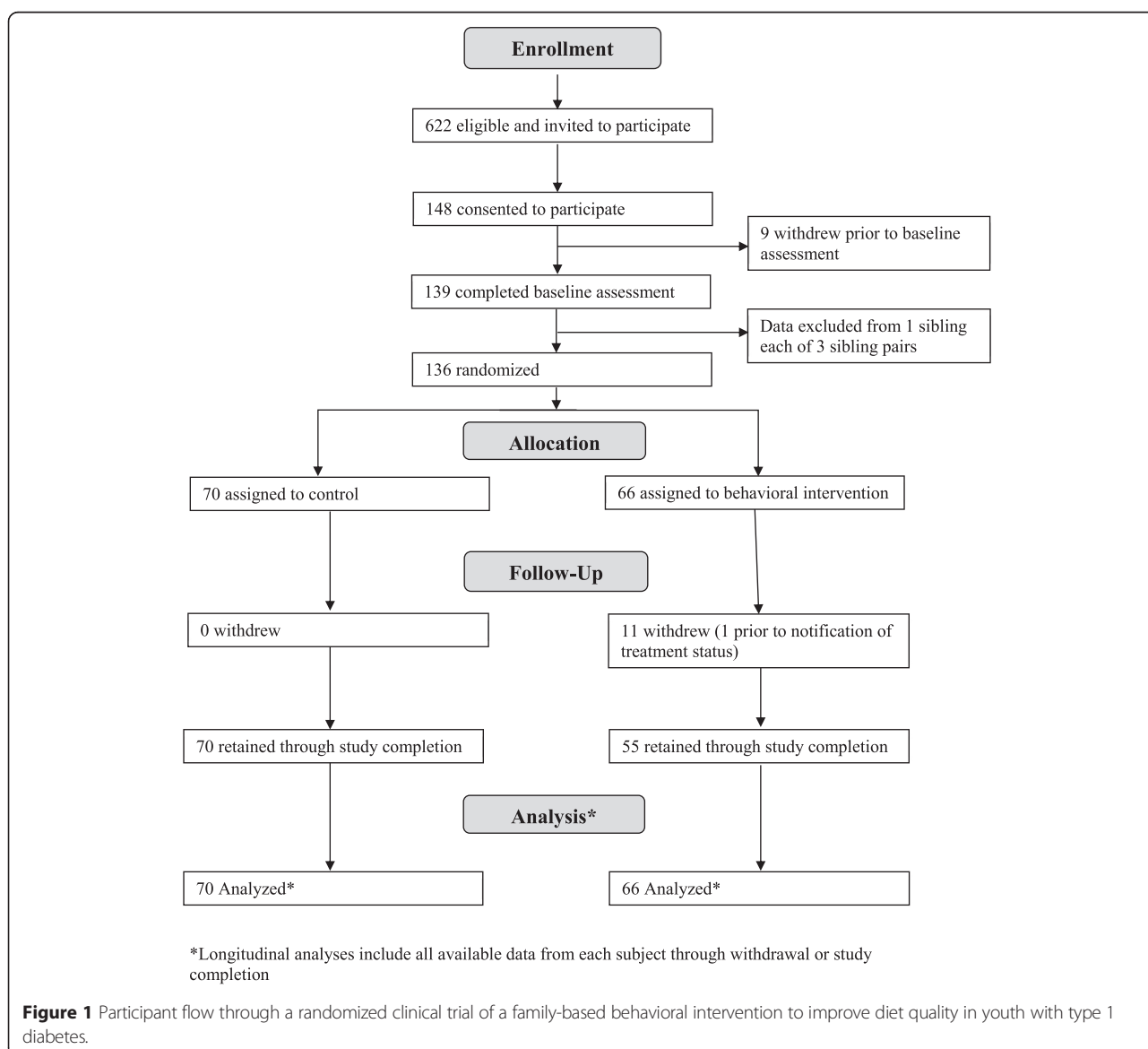
**Results**

Participant flow from recruitment through follow-up is reported in Figure 1. Of those invited, 24% provided informed consent and 22% completed baseline. Subject

retention through study completion was 92%. All subjects who withdrew had been randomized to the intervention group. One subject withdrew after baseline but before being informed of treatment assignment, 2 withdrew within the first 3 study months; 3 between months 3 and 6, 1 between months 6 and 9, 3 between months 9 and 12, and 1 after month 12. Reasons for withdrawal were primarily lack of time to participate. No study-related adverse events were reported.

Baseline characteristics were well-balanced between groups (Table 1). Approximately two-thirds of the sample used insulin pump therapy. The mean HbA1c was 8.1%. Mean intake of fruit, vegetables, and whole grains was well below dietary guidelines.

Intervention effects on diet quality are shown in Figures 2 and 3. There was a positive intervention effect across the



**Table 1 Sample characteristics of youth with type 1 diabetes participating in a behavioral nutrition intervention trial (N = 136)**

	All participants	Treatment (N = 66)	Control (N = 70)	p <sup>1</sup>
Demographics	Mean ± SD or N (%)	Mean ± SD or N (%)	Mean ± SD or N (%)	
Age (years)	12.8 ± 2.6	12.6 ± 2.7	13.0 ± 2.5	0.27
Sex				
Male	66 (48.5)	35 (53.0)	31 (44.3)	0.31
Female	70 (51.5)	31 (47.0)	39 (55.7)	
Race/ethnicity				
White, non-Hispanic	123 (90.4)	58 (87.9)	65 (92.9)	0.17
Hispanic	7 (5.2)	6 (9.1)	1 (1.4)	
Black	5 (3.7)	2 (3.0)	3 (4.3)	
Other	1 (0.7)	0 (0.0)	1 (1.4)	
Highest parent education level <sup>2</sup>				
High school or equivalent	8 (5.9)	4 (6.1)	4 (5.7)	0.48
Junior college, technical or some college	27 (19.9)	11 (16.7)	16 (22.9)	
College degree	46 (33.8)	20 (30.3)	26 (37.1)	
Graduate education	55 (40.4)	31 (47.0)	24 (34.3)	
Family poverty income ratio <sup>2</sup>	5.2 ± 3.1	5.5 ± 3.2	4.9 ± 3.0	0.23
<b>Diabetes and health-related characteristics</b>				
Duration of diabetes (years)	6.0 ± 3.1	5.6 ± 2.5	6.3 ± 3.6	0.15
Insulin regimen				
Injection only	42 (30.9)	20 (30.3)	22 (31.4)	0.89
Pump	94 (69.1)	46 (69.7)	48 (68.6)	
Frequency of blood glucose monitoring (times/d)	5.7 ± 2.4	5.8 ± 2.4	5.6 ± 2.5	0.60
Hemoglobin A1c (%)	8.1 ± 1.0	8.1 ± 1.1	8.1 ± 1.0	0.95
BMI z-score	0.68 ± 0.82	0.65 ± 0.81	0.71 ± 0.84	0.65
<b>Dietary Intake</b>				
% kcal from carbohydrate	47.9 ± 0.5	48.0 ± 0.7	47.9 ± 0.7	0.93
% kcal from protein	16.2 ± 0.2	16.1 ± 0.4	16.3 ± 0.4	0.70
% kcal from fat	35.9 ± 0.5	35.9 ± 0.7	35.8 ± 0.6	0.92
Whole plant food density	1.89 ± 0.09	1.87 ± 0.13	1.91 ± 0.13	0.84
Fruit (cup equivalents per 1000 kcal)	0.28 ± 0.03	0.29 ± 0.04	0.26 ± 0.03	0.60
Vegetable (cup equivalents per 1000 kcal)	0.53 ± 0.03	0.50 ± 0.04	0.55 ± 0.04	0.38
Whole grains (ounce equivalents per 1000 kcal)	0.69 ± 0.05	0.66 ± 0.07	0.72 ± 0.08	0.59
Legumes, nuts, and seeds (cup equivalents per 1000 kcal)	0.17 ± 0.03	0.17 ± 0.04	0.17 ± 0.03	1.00
Healthy eating index 2005	57.3 ± 1.3	57.3 ± 1.8	57.2 ± 2.0	0.99

<sup>1</sup>Comparisons between intervention and control groups using independent *t*-tests for continuous variables or chi-square for categorical variables.

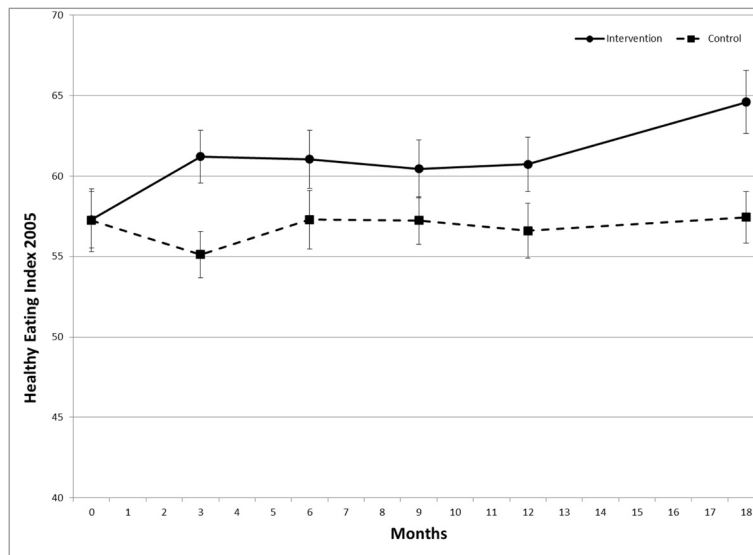
<sup>2</sup>Missing data from 1 participant on highest parent education and from 2 participants on family income.

study duration (permutation test) for HEI2005 ( $p = .015$ ) and WPFDF ( $p = .004$ ). At 18 months, HEI2005 was 7.2 greater (mean ± SE  $64.6 \pm 2.0$  versus  $57.4 \pm 1.6$ ), and WPFDF was 0.5 greater ( $2.2 \pm 0.1$  versus  $1.7 \pm 0.1$ ) in the intervention group versus control. Analysis by individual target food groups (Figure 4) indicated greater intake of whole grains among the treatment group ( $p = .003$ ), but no difference in the intake of the other individual food groups. Treatment groups did not differ in the percent of

energy intake obtained from carbohydrate or fat across the study duration (data not shown). There was no difference between groups in HbA1c across the study duration (Figure 5).

## Discussion

This dietary behavioral intervention demonstrated efficacy in improving overall diet quality and increasing intake of whole plant foods among youth with type 1

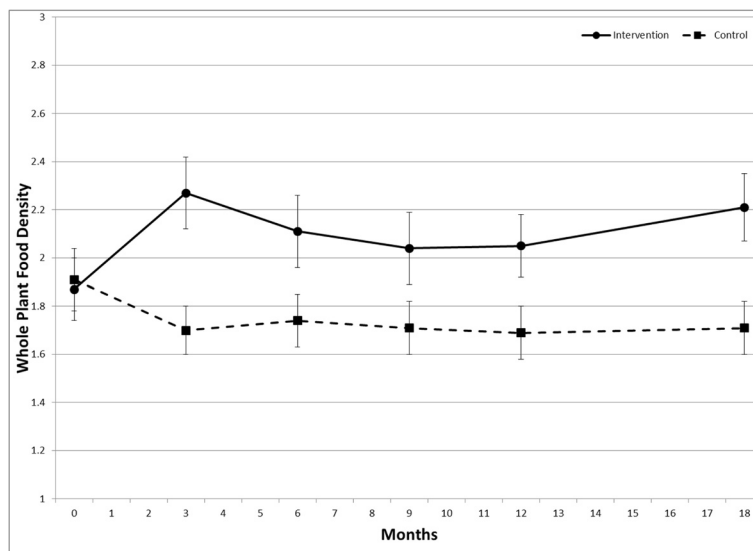


**Figure 2** Effect of a dietary behavioral intervention on Healthy Eating Index 2005 in youth with type 1 diabetes.

diabetes. At 18-month follow-up, youth in the intervention group had a mean HEI2005 score more than 7 points higher and consumed half a cup or ounce equivalent per 1000 kilocalorie more whole plant foods than youth in the control group. The difference in HEI2005 attributable to the intervention is comparable to a 1-quintile difference in HEI2005 as observed in the Nurses' Health and Health Professionals Follow Studies, in which HEI2005 was linearly associated with chronic disease risk [40]. Only one previous intervention reported impact on HEI2005 scores; this study was conducted in adults, and observed increases in up to approximately 3 points in treatment and control groups,

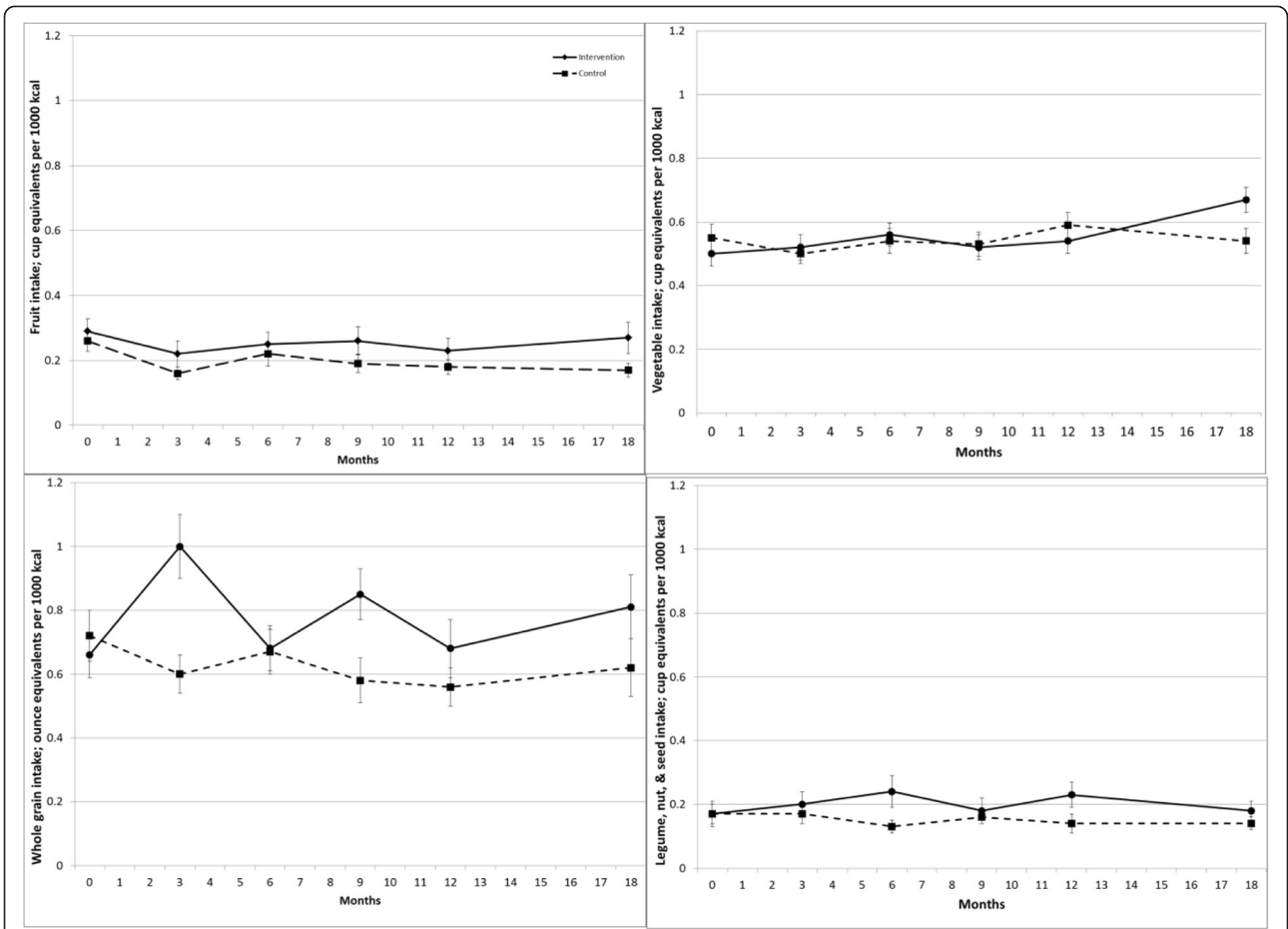
but no discernible intervention effect [41]. To our knowledge, this is the first study to evaluate the impact of a dietary intervention on HEI2005 in a pediatric population. Notably, HEI2005 and WPPFD demonstrated improvement from months 12–18, during which time the intensity of the intervention had decreased. This finding could reflect to a cumulative effect of repeated engagement in the problem-solving process, or the timing and content of the booster sessions, which focused on integrating dietary changes into the families' lifestyle.

Examination of the food groups targeted by the intervention indicated a significant effect on increasing whole grain intake. A growing body of research documents the

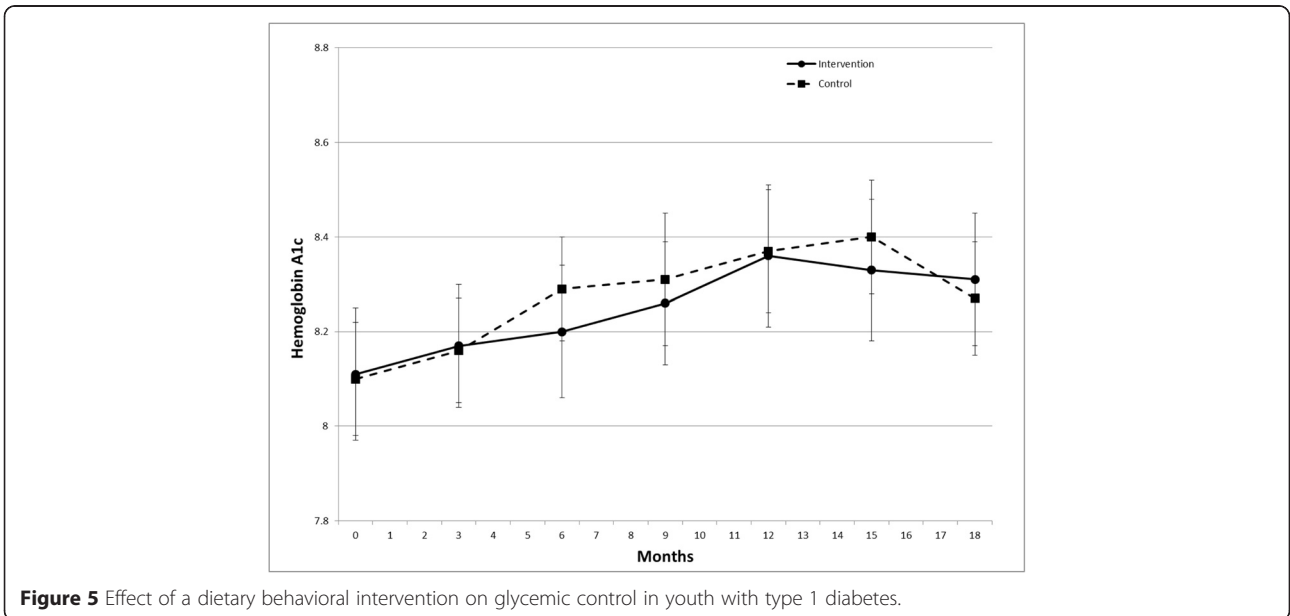


**Figure 3** Effect of a dietary behavioral intervention on Whole Plant Food Density in youth with type 1 diabetes.





**Figure 4** Effect of a dietary behavioral intervention on intake of whole fruit, vegetables, whole grains, and legumes/nuts/seeds in youth with type 1 diabetes.



**Figure 5** Effect of a dietary behavioral intervention on glycemc control in youth with type 1 diabetes.

benefit of whole grain intake on cardiovascular and other chronic disease risk indicators [42,43]. Few previous dietary interventions for youth have addressed whole grain intake, and there is little data on the acceptability of whole grains among youth. The observed intervention effect on whole grain intake was greater than that observed in two recently-reported interventions in youth [44,45]. In another study, [46] a larger intervention effect on whole grain intake (approximately 3 ounce equivalents) was observed; however, the study duration was only 6 weeks, and maintenance of this effect is unknown. Importantly, in contrast to the present study, these previous interventions provided participants with whole grain foods to consume, and no assessment occurred once the foods were no longer provided. In the current study, intervention materials were designed to highlight a variety of whole grain products and assist families in identifying whole grain products through label reading and interpretation of the whole grain stamp. Families were encouraged to try a variety of whole grains to find those that they enjoyed. Findings suggest that whole grain products can be acceptable to youth and indicate the feasibility of increasing their intake.

The difference between groups in fruit intake across the study duration was not statistically significant. Two recent systematic reviews and meta-analyses reported a mean increase of approximately 0.5 daily servings of fruit and vegetables in children participating in behavioral and school-based interventions [47,48], suggesting that further research is needed to determine ways to increase intake of these foods in youth with T1D. Previous research has demonstrated lower intake of fruit among youth with T1D than among the general population [4] and families may limit fruit intake due to erroneous concerns about the effect of fruit on blood sugar levels [49]. Although the intervention included information to correct such possible concerns and facilitate accurate estimation of carbohydrate content for fruits, these issues may represent barriers to increasing fruit intake nonetheless. The intervention did not affect vegetable intake. Previous dietary interventions in youth in the general population have similarly shown little or no effect on vegetables intake [50]. Findings suggest a need for further development of effective methods to promote vegetable intake among youth.

Previous research suggests that improving diet quality may facilitate greater glycemic control [20,21]. However, this dietary behavioral intervention did not have a positive or negative effect on glycemic control. It is possible that the degree of difference in dietary intake between groups observed in this study may not have been sufficient to directly impact glycemic control. Additionally, families in both groups received intermittent masked

CGM with feedback, which could have modestly impacted glycemic control. Finally, this negative finding with respect to glycemic control may reflect the substantial difficulties related to improving HbA1c in pediatric patients with T1D. Nevertheless, improving diet quality in this population is of importance regardless of impact on glycemic control, given the role of healthful dietary intake in reducing risk for adverse cardiovascular outcomes [10-13] and other complications [51].

Findings should be interpreted in light of the study limitations. The sample was drawn from a single clinic with a limited number of minority and low-income families, and resulted in a 24% recruitment rate, both of which limit the generalizability of these results to the general population of youth with T1D. The mean HEI2005 at baseline in this sample was 57.3, which is slightly higher than that reported in the US general population of youth (54.7 for those aged 6 to 11 years and 54.8 for those aged 12 to 17 years) [31]. Considering the observed recruitment rate, this difference could reflect possible sampling bias, as families consuming a healthier diet may have had greater interest in study participation. Families who elected to participate were well-retained throughout the study duration; however, all participant withdrawals were in the intervention group. This may be attributable to the added time burden of participation in the intervention sessions. Intent-to-treat analysis was used to minimize potential bias due to unequal withdrawal across groups. While diet records are among the most reliable and valid measures of dietary intake, it is a burdensome method, and the task of completing food records may influence intake. However, food records capture diet with great detail relative to food frequency questionnaires or diet screeners, and are less susceptible to recall bias [52]. Parents and children were trained together in the completion of the diet records to address the developmental and practical needs of this population.

## Conclusions

Despite the documented poor diet quality among youth with T1D and the importance of dietary intake in disease management and prevention of long-term complications, particularly cardiovascular disease, little research has addressed behavioral strategies for improving dietary intake in this high-risk population. This study demonstrated the efficacy of a theoretically-grounded, family based behavioral intervention integrating motivational interviewing, active learning, and applied problem-solving for improving diet quality among youth with T1D. Findings indicate the potential utility of incorporating such strategies into clinical care, and suggest that improvement in diet quality can be achieved in families living with burdensome disease.

## Additional file

**Additional file 1: Table S1.** Intervention Summary.

### Abbreviations

HbA1c: Hemoglobin A1c; CGM: Continuous glucose monitoring; HEI2005: Healthy Eating Index 2005; T1D: Type 1 diabetes; WPF: Whole Plant Food Density.

### Competing interests

The authors declare that they have no competing interests.

### Authors' contributions

TRN led development, implementation, and oversight of the study. LMBL directed implementation of the clinical trial at the study site. TRN, LMBL, DHL, SNM, LKV, DAB, and LAH contributed to study design. TRN, LMBL, DHL, SNM, LML, LKV, DAB, and LAH contributed to intervention development. All authors contributed to study oversight. TRN drafted the manuscript which was revised by all authors. AL developed the analysis plan and performed statistical analysis. All authors read and approved the final manuscript.

### Acknowledgements

This research was supported by the *Eunice Kennedy Shriver* National Institute of Child Health and Human Development Intramural Research Program (contract #HHSN267200703434C and #HHSN2752008000031/HHSN275002). Support for the research infrastructure for study performance at the clinical site was provided to the Joslin Diabetes Center by the National Institute of Diabetes and Digestive and Kidney Diseases Diabetes Research Center grant P30DK036836.

### Author details

<sup>1</sup>Health Behavior Branch, Division of Intramural Population Health Research, Eunice Kennedy Shriver National Institute of Child Health and Human Development, 6100 Executive Blvd. Rm 7B13R, MSC 7510 Bethesda, MD, USA. <sup>2</sup>Pediatric, Adolescent, and Young Adult Section, Genetics and Epidemiology Section, Joslin Diabetes Center, Harvard Medical School, Boston, MA, USA.

Received: 3 February 2015 Accepted: 20 April 2015

Published online: 08 May 2015

### References

- American Diabetes Association. Nutrition recommendations and interventions for diabetes: a position statement of the american diabetes association. *Diabetes Care*. 2008;31 Suppl 1:S61–78.
- Smart C, Aslander-van Vliet E, Waldron S. Nutritional management in children and adolescents with diabetes. *Pediatr Diabetes*. 2009;10 Suppl 12:100–17.
- Rovner AJ, Nansel TR. Are children with type 1 diabetes consuming a healthful diet? a review of the current evidence and strategies for behavior change. *Diabetes Educ*. 2009;35(1):97–107.
- Mayer-Davis EJ, Liese NM, Bell RA, Dabelea DM, Johansen JM, Pihoker C, et al. Dietary intake among youth with diabetes: the search for diabetes in youth study. *J Am Diet Assoc*. 2006;106(5):689–97.
- Nansel TR, Haynie DL, Lipsky LM, Laffel LMB, Mehta SN. Multiple indicators of poor diet quality in children and adolescents with type 1 diabetes are associated with higher body mass index percentile but not glycemic control. *J Acad Nutr Diet*. 2012;112:1728–35.
- Helgeson VS, Viccaro L, Becker D, Escobar O, Siminerio L. Diet of adolescents with and without diabetes: trading candy for potato chips? *Diabetes Care*. 2006;29(5):982–7.
- Katz ML, Mehta S, Nansel T, Quinn H, Lipsky LM, Laffel LM. Associations of nutrient intake with glycemic control in youth with type 1 diabetes: differences by insulin regimen. *Diabetes Tech Therapeutics*. 2014;16(8):512–8.
- Orchard TJ, Forrest KY, Kuller LH, Becker DJ. Lipid and blood pressure treatment goals for type 1 diabetes: 10-year incidence data from the pittsburgh epidemiology of diabetes complications study. *Diabetes Care*. 2001;24:1053–9.
- de Ferranti SD, de Boer IH, Fonseca V, Fox CS, Golden SH, Lavie CJ, et al. Type 1 diabetes mellitus and cardiovascular disease: a scientific statement from the American Heart Association and American Diabetes Association. *Circulation*. 2014;130:1110–30.
- Guenther AL, Liese AD, Bell RA, Dabelea D, Lawrence JM, Rodriguez BL, et al. Association between the dietary approaches to hypertension diet and hypertension in youth with diabetes mellitus. *Hypertension*. 2009;53:6–12.
- Liese AD, Bortsov A, Gunther ALB, Dabelea D, Reynolds K, Standford DA, et al. Association of dash diet with cardiovascular risk factors in youth with diabetes mellitus: the search for diabetes in youth study. *Circulation*. 2011;123:1410–7.
- Lamichhane AP, Liese AD, Urbina EM, Crandell JL, Jaacks LM, Dabelea D, et al. Associations of dietary intake patterns identified using reduced rank regression with markers of arterial stiffness among youth with type 1 diabetes. *Eur J Clin Nutr*. 2014;68:1327–33.
- Cadario F, Prodam F, Pasqualicchio S, Bellone S, Bonsignori I, Demarchi I, et al. Lipid profile and nutritional intake in children and adolescents with type 1 diabetes improve after a structured dietician training to a mediterranean-style diet. *J Endocrinol Invest*. 2012;35(2):160–8.
- Atabek ME, Kurtoglu S, Pirgon O, Baykara M. Arterial wall thickening and stiffening in children and adolescents with type 1 diabetes. *Diabetes Res Clin Pract*. 2006;74(1):33–40.
- Baskaran C, Volkening LK, Diaz M, Laffel LM. A decade of temporal trends in overweight/obesity in youth with type 1 diabetes after the diabetes Control and Complications Trial. *Pediatr Diabetes*. 2014; doi:10.1111/peidi.12166 [Epub ahead of print].
- Krishnan S, Short KR. Prevalence and significance of cardiometabolic risk factors in children with type 1 diabetes. *J Cardiometab Syndr*. 2009;4(1):50–6.
- Rodriguez BL, Fujimoto WY, Mayer-Davis EJ, Imperatore G, Williams DE, Bell RA, et al. Prevalence of cardiovascular disease risk factors in u.s. children and adolescents with diabetes: the search for diabetes in youth study. *Diabetes Care*. 2006;29(8):1891–6.
- Wadwa RP. Cardiovascular disease risk in youth with diabetes mellitus. *Rev Endocr Metab Disord*. 2006;7(3):197–204.
- Barnes TL, Crandell JL, Bell RA, Mayer-Davis EJ, Dabelea D, Liese AD. Change in dash diet score and cardiovascular risk factors in youth with type 1 and type 2 diabetes mellitus: the search for diabetes in youth study. *Nutr Diabetes*. 2013;3(10), e91.
- Rovner AJ, Nansel TR, Gellar L. The effect of a low glycemic diet versus a standard diet on blood glucose levels and macronutrient intake in youths with type 1 diabetes. *J Am Diet Assoc*. 2009;109:303–7.
- Nansel TR, Gellar L, McGill A. Effect of varying glycemic index meals on blood sugar control assessed with continuous glucose monitoring in youth with type 1 diabetes on basal-bolus insulin regimens. *Diabetes Care*. 2008;31:695–7.
- Gilbertson H, Brand-Miller J, Thorburn A, Evens S, Chondros P, Werther G. The effect of flexible low glycemic index dietary advice versus measured carbohydrate exchange diets on glycemic control in children with type 1 diabetes. *Diabetes Care*. 2001;24:1137–43.
- Marquard J, Stahl A, Lerch C, Wolters M, Grotzke-Leweling M, Mayatepek E, et al. A prospective clinical pilot-trial comparing the effect of an optimized mixed diet versus a flexible low-glycemic index diet on nutrient intake and hba1c levels in children with type 1 diabetes. *J Pediatr Endocrinol Metab*. 2011;24(7–8):441–7.
- Hoelscher DM, Evans A, Parcel GS, Kelder SH. Designing effective nutrition interventions for adolescents. *J Am Diet Assoc*. 2002;102(3 Suppl):S52–63.
- Savage JS, Fisher JO, Birch LL. Parental influence on eating behavior: conception to adolescence. *J Law Med Ethics*. 2007;35:22–34.
- Leventhal H, Leventhal EA, Contrada RJ. Self-regulation, health and behavior: a perceptual-cognitive approach. *Psychol Health*. 1998;13:717–33.
- Bandura A. Social foundations of thought and action: a social cognitive theory. Englewood Cliffs, NJ: Prentice-Hall; 1986.
- Deci EL, Ryan RM. Intrinsic motivation and self-determination in human behavior. New York: Plenum; 1985.
- Emmons KM, Rollnick S. Motivational interviewing in health care settings: opportunities and limitations. *Am J Prev Med*. 2001;20(1):68–74.
- Tober G. Motivational interviewing with young people. In: Miller WR, Rollnick S, editors. *Motivational Interviewing: Preparing people to change addictive behavior*. New York: Guilford Press; 1991. p. 248–59.
- Fungwe T, Guenther PM, Juan WY, Hiza H, Lino M. The quality of children's diets in 2003–04 as measured by the Healthy Eating Index - 2005. Alexandria, VA: United States Department of Agriculture, Center for Nutrition Policy and Promotion; 2009. Report No: Nutrition Insight 43.
- Hu F. Plant-based foods and prevention of cardiovascular disease: an overview. *Am J Clin Nutr*. 2014;78(3):544S–51.
- Guenther PM, Dodd KW, Reedy J, Krebs-Smith SM. Most americans eat much less than recommended amounts of fruits and vegetables. *J Am Diet Assoc*. 2006;106(9):1371–9.

34. Laffel LM, Brackett J, Ho J, Anderson BJ. Changing the process of diabetes care improves metabolic outcomes and reduces hospitalizations. *Qual Manag Health Care*. 1998;6(4):53–62.
35. US Department of Health and Human Services, US Department of US Census Bureau. The 2008 HHS Poverty Guidelines. <http://aspe.hhs.gov/poverty/08poverty.shtml> 2010 September 16; Poverty (Poverty Data).
36. Guenther PM, Reedy J, Krebs-Smith SM, Reeve BB, Basiotis PP. Development and evaluation of the Healthy Eating Index-2005: technical report. Center for Nutrition Policy and Promotion, U.S. Department of Agriculture. Available at <http://www.cnpp.usda.gov/HealthyEatingIndex.htm>; 2007.
37. Lipsky L, Cheon K, Nansel TR, Albert P. Candidate measures of whole plant food intake are related to biomarkers of nutrition and health in the us population (national health and nutrition examination survey 1999–2002). *Nutr Res*. 2012;32(4):251–9.
38. Freedman LS, Guenther PM, Krebs-Smith SM, Kott PS. A populations' mean healthy eating index-2005 scores are best estimated by the score of the population ratio when one 24-hour recall is available. *J Nutr*. 2008;138:1725–9.
39. Schafer JL. Analysis of incomplete multivariate data. 1997. London: Chapman Hall; 1997.
40. Chiuvè SE, Fung TT, Rimm EB, Hu FB, McCullough ML, Wang M, et al. Alternative dietary indices both strongly predict risk of chronic disease. *J Nutr*. 2012;142(6):1009–18.
41. Tussing-Humphreys L, Thomson JL, Mayo T, Edmond E. A church-based diet and physical activity intervention for rural, lower Mississippi delta African American adults: delta body and soul effectiveness study, 2010–2011. *Prev Chronic Dis*. 2013;10:120286.
42. Hur IY, Reicks M. Relationship between whole-grain intake, chronic disease risk indicators, and weight status among adolescents in the national health and nutrition examination survey, 1999–2004. *J Acad Nutr Diet*. 2012;112:46–55.
43. Ye EQ, Chacko SA, Chou EL, Kugizaki M, Liu S. Greater whole-grain intake is associated with lower risk of type 2 diabetes, cardiovascular disease, and weight gain. *J Nutr*. 2012;142:1304–13.
44. Brauchla M, McCabe GP, Miller KB, Kranz S. The effect of high fiber snacks on digestive function and diet quality in a sample of school-age children. *Nutr J*. 2013;12:153.
45. Cohen JFW, Kraak VI, Choumenkovitch SF, Hyatt RR, Economos CD. The change study: a healthy-lifestyles intervention to improve rural children's diet quality. *J Acad Nutr Diet*. 2014;114(1):48–53.
46. Radford A, Langkamp-Henken B, Hughes C, Christman MC, Jonnalagadda S, Boileau TW, et al. Whole-grain intake in middle school students achieves dietary guidelines for Americans and MyPlate recommendations when provided as commercially available foods: a randomized trial. *J Acad Nutr Diet*. 2014; doi:10.1016/j.jand.2014.04.020. [Epub ahead of print].
47. Thomson CA, Ravia J. A systematic review of behavioral interventions to promote intake of fruit and vegetables. *J Am Diet Assoc*. 2011;111(10):1523–35.
48. Evans CEL, Christian MS, Cleghorn CL, Greenwood DC, Cade JE. Systematic review and meta-analysis of school-based interventions to improve daily fruit and vegetable intake in children aged 5 to 12 y. *Am J Clin Nutr*. 2012;96(4):889–901.
49. Mehta SN, Haynie DL, Higgins LA, Bucey NN, Rovner AJ, Volkening LK, et al. Emphasis on carbohydrates may negatively influence dietary patterns in youth with type 1 diabetes. *Diabetes Care*. 2009;32(12):2174–6.
50. Silveira JAC, Taddei JAAC, Guerra PH, Nobre MRC. Effectiveness of school-based nutrition education interventions to prevent and reduce excessive weight gain in children and adolescents: a systematic review. *J Pediatr (Rio J)*. 2011;87(5):382–92.
51. Roy MS, Janal MN. High caloric and sodium intakes as risk factors for progression of retinopathy in type 1 diabetes mellitus. *Arch Ophthalmol*. 2010;128(1):33–9.
52. Thompson FE, Subar AF. Dietary assessment methodology. In: Coulston AM, Boushey CJ, editors. *Nutrition in the prevention and treatment of disease*. 2nd ed. Burlington, MA: Elsevier Academic Press; 2008. p. 3–39.

**Submit your next manuscript to BioMed Central and take full advantage of:**

- Convenient online submission
- Thorough peer review
- No space constraints or color figure charges
- Immediate publication on acceptance
- Inclusion in PubMed, CAS, Scopus and Google Scholar
- Research which is freely available for redistribution

Submit your manuscript at  
[www.biomedcentral.com/submit](http://www.biomedcentral.com/submit)

