



# A genome-wide association study identifies risk loci for spirometric measures among smokers of European and African ancestry

## Citation

Lutz, S. M., M. H. Cho, K. Young, C. P. Hersh, P. J. Castaldi, M. McDonald, E. Regan, et al. 2015. "A genome-wide association study identifies risk loci for spirometric measures among smokers of European and African ancestry." *BMC Genetics* 16 (1): 138.  
doi:10.1186/s12863-015-0299-4. <http://dx.doi.org/10.1186/s12863-015-0299-4>.

## Published version

<https://doi.org/10.1186/s12863-015-0299-4>

## Link

<http://nrs.harvard.edu/urn-3:HUL.InstRepos:23993693>

## Terms of use

This article was downloaded from Harvard University's DASH repository, and is made available under the terms and conditions applicable to Other Posted Material (LAA), as set forth at

<https://harvardwiki.atlassian.net/wiki/external/NGY5NDE4ZjgzNTc5NDQzMGIzZWZhMGFIOWI2M2EwYTg>

## Accessibility

<https://accessibility.huit.harvard.edu/digital-accessibility-policy>

## Share Your Story

The Harvard community has made this article openly available.  
Please share how this access benefits you. [Submit a story](#)

RESEARCH ARTICLE

Open Access



# A genome-wide association study identifies risk loci for spirometric measures among smokers of European and African ancestry

Sharon M. Lutz<sup>1\*†</sup>, Michael H. Cho<sup>2†</sup>, Kendra Young<sup>3</sup>, Craig P. Hersh<sup>2</sup>, Peter J. Castaldi<sup>2</sup>, Merry-Lynn McDonald<sup>2</sup>, Elizabeth Regan<sup>4</sup>, Manuel Mattheisen<sup>2</sup>, Dawn L. DeMeo<sup>2</sup>, Margaret Parker<sup>5</sup>, Marilyn Foreman<sup>6</sup>, Barry J. Make<sup>4</sup>, Robert L. Jensen<sup>7</sup>, Richard Casaburi<sup>8</sup>, David A. Lomas<sup>9</sup>, Surya P. Bhatt<sup>10</sup>, Per Bakke<sup>11</sup>, Amund Gulsvik<sup>11</sup>, James D. Crapo<sup>4</sup>, Terri H. Beaty<sup>5</sup>, Nan M. Laird<sup>12</sup>, Christoph Lange<sup>12</sup>, John E. Hokanson<sup>3†</sup>, Edwin K. Silverman<sup>2†</sup> and ECLIPSE Investigators, and COPDGene Investigators

## Abstract

**Background:** Pulmonary function decline is a major contributor to morbidity and mortality among smokers. Post bronchodilator FEV<sub>1</sub> and FEV<sub>1</sub>/FVC ratio are considered the standard assessment of airflow obstruction. We performed a genome-wide association study (GWAS) in 9919 current and former smokers in the COPDGene study (6659 non-Hispanic Whites [NHW] and 3260 African Americans [AA]) to identify associations with spirometric measures (post-bronchodilator FEV<sub>1</sub> and FEV<sub>1</sub>/FVC). We also conducted meta-analysis of FEV<sub>1</sub> and FEV<sub>1</sub>/FVC GWAS in the COPDGene, ECLIPSE, and GenKOLS cohorts (total  $n = 13,532$ ).

**Results:** Among NHW in the COPDGene cohort, both measures of pulmonary function were significantly associated with SNPs at the 15q25 locus [containing *CHRNA3/5*, *AGPHD1*, *IREB2*, *CHRNA4*] (lowest  $p$ -value =  $2.17 \times 10^{-11}$ ), and FEV<sub>1</sub>/FVC was associated with a genomic region on chromosome 4 [upstream of *HHIP*] (lowest  $p$ -value =  $5.94 \times 10^{-10}$ ); both regions have been previously associated with COPD. For the meta-analysis, in addition to confirming associations to the regions near *CHRNA3/5* and *HHIP*, genome-wide significant associations were identified for FEV<sub>1</sub> on chromosome 1 [*TGFB2*] ( $p$ -value =  $8.99 \times 10^{-9}$ ), 9 [*DBH*] ( $p$ -value =  $9.69 \times 10^{-9}$ ) and 19 [*CYP2A6/7*] ( $p$ -value =  $3.49 \times 10^{-8}$ ) and for FEV<sub>1</sub>/FVC on chromosome 1 [*TGFB2*] ( $p$ -value =  $8.99 \times 10^{-9}$ ), 4 [*FAM13A*] ( $p$ -value =  $3.88 \times 10^{-12}$ ), 11 [*MMP3/12*] ( $p$ -value =  $3.29 \times 10^{-10}$ ) and 14 [*RIN3*] ( $p$ -value =  $5.64 \times 10^{-9}$ ).

**Conclusions:** In a large genome-wide association study of lung function in smokers, we found genome-wide significant associations at several previously described loci with lung function or COPD. We additionally identified a novel genome-wide significant locus with FEV<sub>1</sub> on chromosome 9 [*DBH*] in a meta-analysis of three study populations.

**Keywords:** Chronic obstructive pulmonary disease, DBH, FEV<sub>1</sub>, FEV<sub>1</sub>/FVC, Genome-wide association study, Spirometry

## Background

In the United States, chronic obstructive pulmonary disease (COPD) is the third leading cause of death [1]. The major environmental risk factor for COPD is cigarette smoking, but only a minority of smokers will develop COPD during their lifetime [2, 3]. COPD risk is most

likely the cumulative result of genetic factors, environmental factors such as cigarette smoking, developmental factors, and gene-by-environment interactions [4].

A diagnosis of COPD is based on post bronchodilator spirometric measures of the forced expiratory volume in the first second (FEV<sub>1</sub>) and the forced vital capacity (FVC), the total volume of air expired after a maximal inhalation [5]. The ratio of FEV<sub>1</sub>/FVC is a widely used measure of airflow obstruction [3]. Understanding the genetics underlying these spirometric

\* Correspondence: sharon.lutz@ucdenver.edu

†Equal contributors

<sup>1</sup>Department of Biostatistics, University of Colorado Anschutz Medical Campus, 13001 E. 17th Place, B119 Bldg. 500, W3128, Aurora, CO 80045, USA  
Full list of author information is available at the end of the article

measurements may help increase our knowledge of the genetics of COPD.

Initial genome wide analyses of spirometric measures of pulmonary function using family-based linkage analyses identified broad genomic regions on chromosome 1, 2, 4, 8, and 18 [6]. Subsequent genome wide association studies in the Framingham cohort, a population based sample, identified the HHIP gene as a susceptibility locus for FEV<sub>1</sub>/FVC [7]. This Framingham cohort was combined with several other population based cohorts forming the CHARGE consortium of greater than 20,000 individuals. This sample, along with the SpiroMeta consortium, another population based sample of over 20,000 individuals, provided the sample for a series of meta-analyses; one used CHARGE as a discovery population with subsequent replication in SpiroMeta [8], a second used SpiroMeta as the discovery population with selected genotyping in an additional 32,000 individuals and a pooled meta analysis with the CHARGE consortium [9], and a third combined CHARGE and SpiroMeta in the discovery phase ( $n = 48,201$ ) with SNP replication in an additional combined population based sample of 46,411 individuals [10]. The first two of these meta-analyses confirmed HHIP as a susceptibility locus for FEV<sub>1</sub>/FVC and identified multiple additional loci that were significantly associated with spirometric measures of pulmonary function. The third meta-analysis identified 16 new loci for pre bronchodilator pulmonary function in addition to 10 previously reported loci [10].

To examine the role of smoking on the genetic susceptibility to spirometric measures of pulmonary function, the CHARGE/SpiroMeta samples with additional European ancestry samples totalling more than 30,000 individuals were stratified by smoking status (ever versus never smokers) [11]. Among smokers, a novel signal on chromosome 15q25 (*CHRNA5/A3/B4*) was identified for airflow obstruction defined as pre bronchodilator FEV<sub>1</sub> and FEV<sub>1</sub>/FVC below the lower limit of normal. This is the major genomic region for nicotine dependence and smoking exposure and related traits [12]. More recently a genome wide study of pulmonary function identified the *CYP2U1* gene [involved in nicotine metabolism], however, this was not replicated in the CHARGE/SpiroMeta sample [13].

Given that smoking is the major environmental determinant of pulmonary function decline, we performed a GWAS of the full quantitative range of post bronchodilator pulmonary function in 9919 current and former smokers of the COPDGene study with complete data and genome wide genotyping. We hypothesized that we would identify novel genetic loci and replicate known genomic regions affecting pulmonary function by performing a GWAS of post bronchodilator spirometric measures in the COPDGene study, a multi-center

observational study designed to identify genetic factors associated with risk of COPD. In addition, to insure the GWAS results are generalizable beyond a single study, we performed a meta-analysis of post bronchodilator FEV<sub>1</sub> and FEV<sub>1</sub>/FVC ratio over three similar studies: the COPDGene, ECLIPSE, and GenKOLS studies. Characteristics of the 3 studies (COPDGene, ECLIPSE, and GenKOLS) are given in Table 1. We also assessed whether different genomic regions were associated with spirometric measures of pulmonary function separately among non-Hispanic white (NHW) and African-American (AA) COPDGene subjects.

## Results

### COPDGene GWAS in Non-Hispanic Whites

For FEV<sub>1</sub> among all NHW COPDGene participants, several SNPs at the 15q25 locus [near *CHRNA3*, *CHRNA5*, *CHRNA4*, *AGPHD1*, and *IREB2*] reached genome-wide significance. For FEV<sub>1</sub>/FVC among all NHW COPDGene subjects, several SNPs in the same region on chromosome 15 reached genome-wide significance. Tables 2 and 3 show  $p$ -values for the most significant SNPs in these regions. Additional file 1: Tables S5–S6 list all SNPs with a  $p$ -value less than  $5 \times 10^{-6}$ .

### COPDGene GWAS in African Americans

For both FEV<sub>1</sub> and FEV<sub>1</sub>/FVC among all AA COPDGene subjects, there were a few SNPs that were genome-wide significant, but these SNPs were all imputed, with low minor allele frequency (<5 %), and in a region with no other non-imputed SNPs. Therefore, we are not confident that these signals are valid associations. The top SNPs for these analyses with  $p$ -values less than  $5 \times 10^{-6}$  can be found in the Additional file 1: Tables S1 and S2.

### Results from the Meta-Analysis: COPDGene participants combined with the ECLIPSE and GenKOLS cohorts

For FEV<sub>1</sub> and FEV<sub>1</sub>/FVC, most of the genome-wide significant results were again at the 15q25 locus, on chromosome 4 in *FAM13A*, and on chromosome 4 near *HHIP*. In addition, Table 2 shows other genome-wide significant findings for FEV<sub>1</sub>/FVC on chromosome 1 [*TGFB2*], 9 [*DBH*] and 19 [*CYP2A6*, *CYP2A7*]. Table 3 shows other genome-wide significant findings for FEV<sub>1</sub> on chromosome 1 [*TGFB2*], 11 [*MMP3*, *MMP12*] and 14 [*RIN3*]. The top SNPs for these analyses with  $p$ -values less than  $5 \times 10^{-6}$  can be found in the Additional file 1: Tables S9 and S10.

### Case-only analyses among NHW in COPDGene, AA in COPDGene, and within the meta-analysis

In addition, we examined the genetic susceptibility to variation in these pulmonary function phenotypes in COPD cases only (GOLD stages 2–4) (2820 NHW in

**Table 1** Characteristics of COPDGene, ECLIPSE, and GenKOLS Subjects included in genome-wide association analysis. For continuous variables, the mean is given first followed by the standard deviation

	COPDGene NHW	COPDGene AA	ECLIPSE	GenKOLS
Sample size (#COPD cases)	6659 (2812)	3260 (821)	1942 (1764)	1671 (863)
Gender (% male)	47.73 %	44.79 %	66.17 %	58.71 %
Age (years)	62.0 (8.9)	54.6 (7.2)	63.1 (7.6)	60.7 (11.1)
Height (cm)	169.7 (9.5)	171.0 (9.7)	169.7 (9.1)	170.8 (8.9)
BMI (kg/m <sup>2</sup> )	28.7 (6.0)	29.07 (6.7)	26.8 (5.5)	25.9 (4.6)
Pack-years	47.2 (26.0)	38.3 (21.6)	48.6 (27.7)	26.0 (17.4)
Current Smoking (%)	38.9 %	80.0 %	34.8 %	43.8 %
FEV <sub>1</sub> (L)	2.20 (0.95)	2.30 (0.86)	1.50 (0.78)	2.38 (1.10)
FEV <sub>1</sub> (% predicted)	74.0 (26.0)	82.0 (23.9)	53.1 (23.2)	72.2 (26.2)
FEV <sub>1</sub> /FVC	0.64 (0.17)	0.72 (0.14)	0.48 (0.15)	0.65 (0.17)

Notes: FEV<sub>1</sub>, FEV<sub>1</sub> (% predicted), and FEV<sub>1</sub>/FVC are all based on post-bronchodilator spirometry

COPDGene, 821 AA in COPDGene, 1764 NHW in ECLIPSE, and 863 NHW in GenKOLS). While no SNPs reached genome-wide significance for either FEV<sub>1</sub>/FVC or FEV<sub>1</sub> in the case-only analyses, Additional file 1: Tables S3–S4, S7–S8, and S11–S12 show the top SNPs for these analyses. Some of the regions that met genome-wide significance in the entire study population had at least nominal evidence for association in COPD cases only. In addition to the well-established COPD genetic loci near *HHIP*, *FAM13A*, and *CHRNA3/5*, the *MMP3/MMP12* and *DBH* regions had  $P < 0.001$

evidence for association to lung function levels within COPD cases. Power may have been limited in the case-only analysis, but it is also possible that genetic determinants are more important for the presence/absence of COPD than for the severity of airflow obstruction within COPD cases.

#### Comparison of Findings among AA and NHW

Figure 1 shows how the  $p$ -values of the SNPs on chromosome 15 [*CHRNA3*, *CHRNA5*, *CHRN4*, *AGPHD1*, and *IREB2*] compare among the NHW and AA COPDGene

**Table 2** Genome-wide significant results for FEV<sub>1</sub>/FVC in the meta-analysis. The SNP with the lowest  $p$  value within each region or gene is listed ordered by chromosome number

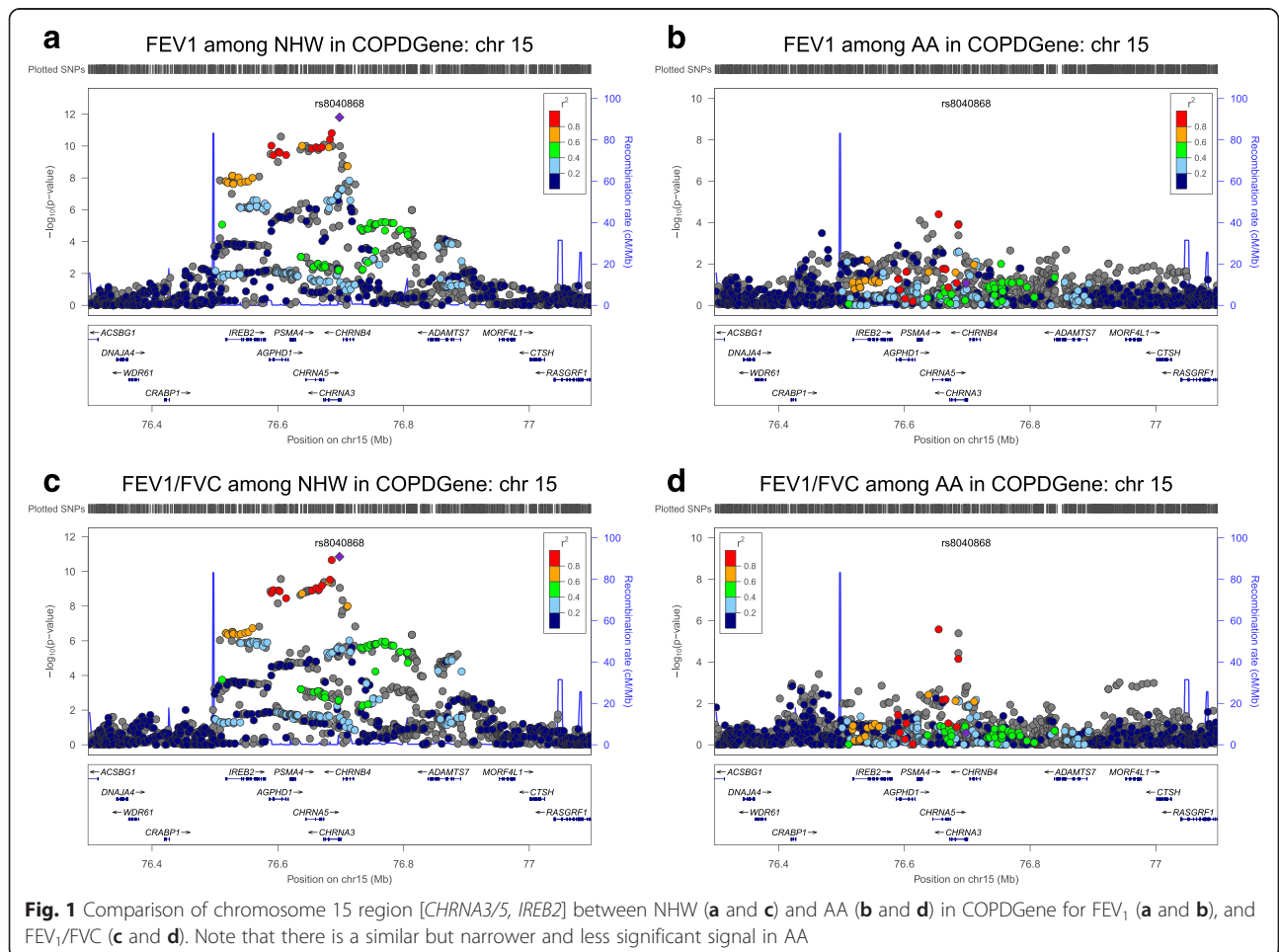
SNP	Position (bp)	CHR	Nearest Gene	Coded Allele	COPDGene NHW			COPDGene AA			Meta-Analysis of COPDGene NHW, COPDGene AA, ECLIPSE and GenKOLS		
					Allele Freq	Beta	P	Allele Freq	Beta	P	Allele Freq	Beta	P
rs72738834	218623888	1	<i>TGFB2</i>	G/G/A	0.79	-0.01	0.00276	0.834	-0.017	5.34E-05	0.81	-0.013	6.51E-09
rs6837671	89873092	4	<i>FAM13A</i>	G/G/A	0.60	-0.01	5.18E-06	0.416	0.007	0.03196	0.535	0.013	5.45E-13
rs13141641	145506456	4	<i>LOC646576 (near HHIP)</i>	C/C/T	0.60	-0.02	5.72E-09	0.888	-0.015	0.00477	0.632	-0.018	9.52E-20
rs72981684	102724211	11	<i>MMP12</i>	T/T/T	0.88	-0.02	2.46E-07	0.968	-0.024	0.02783	0.114	0.019	3.92E-10
rs72981675	102721251	11	<i>MMP3</i>	T/T/T	0.88	-0.02	2.80E-07	0.968	-0.024	0.02842	0.114	0.019	3.65E-10
rs754388	93115410	14	<i>RIN3</i>	G/G/C	0.82	-0.02	3.17E-07	0.85	-0.01	0.00898	0.83	-0.014	5.54E-09
rs56077333	78899003	15	<i>CHRNA3</i>	A/A/A	0.65	-0.02	4.70E-10	0.816	0.019	6.02E-06	0.314	-0.018	9.55E-20
rs8042849	78817929	15	<i>AGPHD1</i>	C/C/T	0.56	0.02	2.71E-10	0.568	0.008	0.02729	0.561	0.015	2.81E-15
rs17486278	78867482	15	<i>CHRNA5</i>	C/C/A	0.63	0.02	2.28E-09	0.709	0.016	3.14E-06	0.65	0.017	4.48E-20
rs58365910	78849034	15	<i>PSMA4</i>	C/C/T	0.628	0.016	2.28E-09	0.747	0.011	0.00475	0.655	0.015	1.24E-15
rs17487223	78923987	15	<i>CHRN4</i>	G/T/T	0.616	0.016	9.73E-09	0.882	0.013	0.00999	0.349	-0.016	3.28E-15
rs17484524	78772676	15	<i>IREB2</i>	G/G/A	0.639	0.015	1.86E-07	0.936	0.01	0.138	0.666	0.015	4.83E-13
rs12913260	79071095	15	<i>ADAMTS7</i>	A/A/A	0.59	0.02	1.60E-05	0.88	0.004	0.53	0.371	-0.015	4.82E-08
rs56113850	41353107	19	<i>CYP2A6</i>	T/C/T	0.60	-0.02	2.46E-05	0.562	0.01	0.01955	0.462	0.014	5.19E-09

The "Coded Allele" column refers to the reference allele where the first reference allele is for the COPDGene NHW cohort, the second reference allele is for the COPDGene AA cohort, and the third reference allele is for the meta-analysis of COPDGene NHW, COPDGene AA, ECLIPSE and GenKOLS. Note that FEV<sub>1</sub>/FVC was measured on the proportion scale (0–1) and not the percentage scale (0–100)

**Table 3** Genome-wide significant results for FEV<sub>1</sub> in the meta-analysis. The SNP with the lowest *p* value within each region or gene is listed ordered by chromosome number

SNP	Position (bp)	CHR	Gene/Nearest Gene	Coded Allele	COPDGene NHW			COPDGene AA			Meta-Analysis of COPDGene NHW, COPDGene AA, ECLIPSE and GenKOLS		
					Allele Freq	Beta	P	Allele Freq	Beta	P	Allele Freq	Beta	P
rs10863398	218588279	1	TGFB2	A/A/A	0.883	-0.055	0.00539	0.695	-0.07	4.94E-05	0.202	0.067	1.06E-08
rs138641402	145445779	4	LOC646576 (near HHIP)	T/T/A	0.641	-0.067	2.28E-06	0.919	-0.09	0.00479	0.668	-0.083	8.99E-15
rs6837671	89873092	4	FAM13A	G/G/A	0.595	0.057	1.11E-05	0.416	0.059	0.00024	0.537	0.064	2.89E-13
rs1108581	136505241	9	DBH	A/A/A	0.196	0.068	2.29E-05	0.438	0.045	0.00394	0.292	-0.058	8.72E-09
rs56077333	78899003	15	CHRNA3	A/A/A	0.649	0.089	9.49E-11	0.816	0.079	0.00014	0.318	-0.084	5.29E-18
rs8031948	78816057	15	AGPHD1	T/T/T	0.63	0.084	2.61E-10	0.838	0.05	0.02287	0.336	-0.075	2.86E-15
rs17486278	78867482	15	CHRNA5	C/C/A	0.632	0.085	1.44E-10	0.709	0.073	4.31E-05	0.647	0.079	3.48E-18
rs17487223	78923987	15	CHRNB4	T/T/T	0.616	0.081	1.82E-09	0.882	0.066	0.01205	0.353	-0.076	2.06E-14
rs2568494	78740964	15	IREB2	G/G/A	0.367	-0.076	7.25E-09	0.443	-0.028	0.07723	0.545	-0.062	1.66E-12
rs58365910	78849034	15	PSMA4	C/C/T	0.628	0.085	1.65E-10	0.747	0.045	0.01584	0.652	0.072	6.69E-15
rs56113850	41353107	19	CYP2A6	T/C/T	0.596	-0.067	0.00045	0.562	0.048	0.01985	0.458	0.067	1.51E-08

The "Coded Allele" column refers to the reference allele where the first reference allele is for the COPDGene NHW cohort, the second reference allele is for the COPDGene AA cohort, and the third reference allele is for the meta-analysis of COPDGene NHW, COPDGene AA, ECLIPSE and GenKOLS

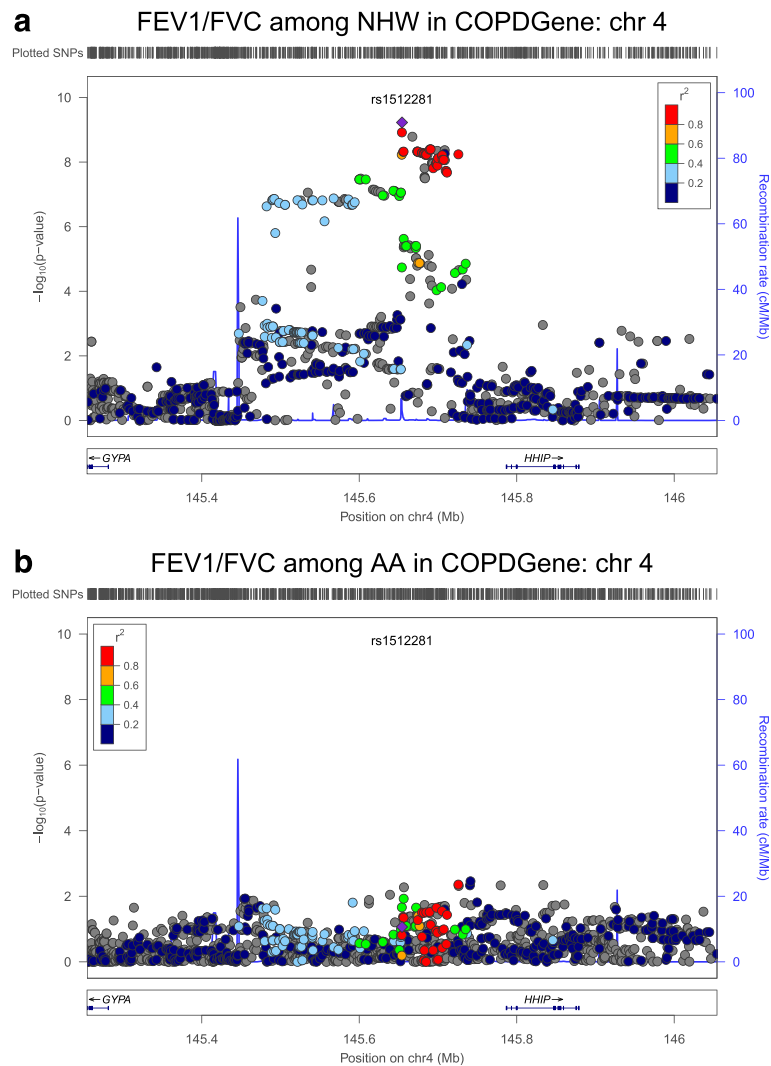


**Fig. 1** Comparison of chromosome 15 region [CHRNA3/5, IREB2] between NHW (a and c) and AA (b and d) in COPDGene for FEV<sub>1</sub> (a and b), and FEV<sub>1</sub>/FVC (c and d). Note that there is a similar but narrower and less significant signal in AA

subjects for both spirometric measures of pulmonary function. While no single SNP reaches genome-wide significance in this region among the AA subjects, there is a region near *CHRNA3* with several SNPs that have  $p$ -values in the range of  $5 \times 10^{-6}$ . It appears that the results among AA are similar to those in NHW but may not have the power to reach genome-wide significance due to the smaller sample size. Figure 2 shows qualitatively different association results in the NHW (highly associated) and AA (not associated) subjects for the region on chromosome 4 near *HHIP*, although reduced power in the AA subjects could contribute to reduced evidence for association.

**Comparison to previously published spirometry GWA studies**  
We considered genome-wide significant results from a previously published spirometry GWA analysis in

general population samples, which combined the Cohorts for Heart and Aging Research in Genomic Epidemiology (CHARGE) and SpiroMeta studies [10]. Table 4 shows  $p$ -values of these loci from the CHARGE/SpiroMeta analyses in the COPDGene subpopulations analysed above. Except for *HHIP* and *FAM13A*, none of the other regions achieved genome-wide significance ( $p$ -value  $< 5 \times 10^{-8}$ ) in the COPDGene cohort or in the meta-analysis of COPDGene, GenKOLS, and ECLIPSE. However, quite a few SNPs had a signal in the same direction as CHARGE/SpiroMeta and met a nominal levels of significance using Bonferroni correction ( $p$ -value  $< 0.0018$  for the 28 regions tested) in the meta-analysis of these three study populations, including SNPs in or near *AGER*, *MFAP2*, *RARB*, *GSTCD*, *NPNT*, *SPATA9*, *ADAM19*, *THSD4*, and *CFDP1*.



**Fig. 2** Comparison of chromosome 4 region [near *HHIP*] between NHW (a) and AA (b) for FEV<sub>1</sub>/FVC. Note that unlike for chromosome 15, there is not a similar signal in AA, although this could be due to the reduced statistical power in the smaller sample size of AA



**Table 4** Comparison of the current GWA results with the novel genome wide results from the largest GWAS of pre bronchodilator FEV<sub>1</sub> and FEV<sub>1</sub>/FVC ratio in the CHARGE/SpiroMeta consortium

chr	Gene	SNP/Position (bp)	Phenotype	CHARGE/SpiroMeta	COPDGene NHW	COPDGene AA	Meta-analysis: COPDGene, ECLIPSE, and GenKOLS
				Coded Allele/Beta/P-value	Coded Allele/Allele Frequency/Beta/P-value	Coded Allele/Allele Frequency/Beta/P-value	
1	<i>MFAP2</i>	rs2284746 17306675	FEV <sub>1</sub> /FVC	G/-0.047/7.50e-16	G/0.476/0.007/0.012	G/0.807/0.005/0.256	C/0.545/0.007/1.4E-04
1	<i>TGFB2</i>	rs993925* 218860068	FEV <sub>1</sub> /FVC	T/0.034/1.16e-08	C/0.33/0.002/0.551	C/0.32/0.004/0.232	T/0.594/0.002/0.3655
2	<i>TNS1</i>	rs2571445 218683154	FEV <sub>1</sub>	G/0.047/9.83e-11	G/0.393/-0.027/0.03526	G/0.201/0.007/0.7201	A/0.645/-0.015/0.0996
2	<i>HDAC4</i>	rs12477314 239877148	FEV <sub>1</sub> /FVC	T/0.041/1.68e-08	T/0.8/-0.001/0.8196	T/0.963/-0.003/0.683	T/0.187/0.003/0.1802
3	<i>RARB</i>	rs1529672 25520582	FEV <sub>1</sub> /FVC	C/-0.048/3.97e-14	C/0.162/0.015/1.88E-05	C/0.20/0.005/0.2018	A/0.82/0.01/6.72E-06
3	<i>MECOM</i>	rs1344555 169300219	FEV <sub>1</sub>	T/-0.034/2.65e-08	T/0.809/0.017/0.293	T/0.799/-0.037/0.07322	T/0.194/-0.008/0.4903
4	<i>FAM13A</i>	rs2045517 89870964	FEV <sub>1</sub> /FVC	T/-0.047/2.0e-11	T/0.595/0.012/5.32E-06	T/0.343/0.005/0.1522	T/0.485/-0.012/5.66E-12
4	<i>GSTCD</i>	rs10516526 106688904	FEV <sub>1</sub>	G/0.108/4.75e-14	G/0.935/-0.117/6.16E-06	G/0.951/0.002/0.9647	A/0.694/-0.066/0.00029
4	<i>NPNT</i>	rs17331332 106808107	FEV <sub>1</sub>	G/-0.102/1.11e-12	A/0.933/-0.128/6.16E-06	A/0.979/-0.14/0.03813	A/0.064/0.093/3.19E-06
4	<i>HHIP</i>	rs1032296 145434688	FEV <sub>1</sub> /FVC FEV <sub>1</sub>	T/-0.05/3.42e-12 T/-0.047/8.74e-11	C/0.413/-0.011/1.82E-05 A/0.414/-0.045/0.0004	C/0.17/-0.01/0.023 A/0.17/-0.061/0.004	T/0.59/-0.011/1.80E-08 T/0.585/-0.048/2.27E-07
5	<i>SPATA9</i>	rs153916 95036700	FEV <sub>1</sub> /FVC	T/-0.031/2.12e-08	C/0.539/-0.008/0.002	C/0.57/-0.008/0.017	T/0.55/-0.008/3.06E-05
5	<i>HTR4</i>	rs11168048 145479139	FEV <sub>1</sub> /FVC FEV <sub>1</sub>	T/-0.047/5.97e-11 T/-0.046/2.43e-10	T/0.42/0.01/0.0102 T/0.42/0.03/0.008	T/0.23/-0.002/0.5213 T/0.23/0.01/0.548	T/0.425/-0.004/0.04823 T/0.428/-0.02/0.01452
5	<i>ADAM19</i>	rs11134779 156936766	FEV <sub>1</sub> /FVC	G/-0.042/6.01e-09	G/0.65/0.005/0.086	G/0.411/0.007/0.024	A/0.574/0.006/8.00E-04
6	<i>AGER</i>	rs2070600 32151443	FEV <sub>1</sub> /FVC FEV <sub>1</sub>	T/0.126/9.07e-15 T/0.025/1.271e-12	A/0.043/0.035/6.22E-08 C/0.043/0.121/0.0001	A/0.01/-0.003/0.849 A/0.01/0.054/0.522	T/0.31/0.026/2.24e-07 T/0.302/0.081/7.43e-04
6	<i>GPR126</i>	rs3817928 142750516	FEV <sub>1</sub> /FVC	G/0.059/2.27e-12	G/0.806/-0.003/0.311	G/0.802/-0.015/3e-04	A/0.807/-0.006/0.01394
6	<i>LOC153910</i>	rs262129 142853144	FEV <sub>1</sub> /FVC	G/0.056/2.91e-13	G/0.704/-0.006/0.043	G/0.19/-0.004/0.3078	A/0.59/-0.005/0.009
6	<i>ZKSCAN3</i>	rs6903823 28322296	FEV <sub>1</sub>	G/-0.037/2.18e-10	G/0.777/0.013/0.380	G/0.592/-0.049/0.00233	A/0.712/-0.013/0.193
6	<i>NCR3</i>	rs2857595 31568469	FEV <sub>1</sub> /FVC	G/0.037/2.28e-10	G/0.188/0/0.9309	G/0.423/-0.001/0.7777	A/0/-0.001/0.6174
6	<i>ARMC2</i>	rs2798641 109268050	FEV <sub>1</sub> /FVC	T/-0.041/8.35e-09	C/0.191/-0.009/0.005	C/0.053/-0.005/0.505	T/0.825/-0.008 0.002
9	<i>PTCH1</i>	rs16909859 98204792	FEV <sub>1</sub> /FVC	G/0.08/7.45e-10	G/0.075/-0.004/0.432	G/0.295/-0.005/0.156	A/0.67/-0.004/0.1468
10	<i>CDC123</i>	rs7068966 12277992	FEV <sub>1</sub> /FVC	T/0.033/6.13e-13	C0.522/0.002/0.516	T/0.782/-0.008/0.04255	T/0.449/0.003/0.07659

**Table 4** Comparison of the current GWA results with the novel genome wide results from the largest GWAS of pre bronchodilator FEV<sub>1</sub> and FEV<sub>1</sub>/FVC ratio in the CHARGE/SpiroMeta consortium (*Continued*)

10	<i>C10orf1</i>	rs11001819 78315224	FEV <sub>1</sub>	G/-0.029/2.98e-12	A/0.524/-0.009/0.493	A/0.661/0.012/0.4849	A/0.45/0.006/0.472
12	<i>LRP1</i>	rs11172113 57527283	FEV <sub>1</sub> /FVC	T/-0.032/1.24e-08	T/0.407/0.006/0.038	T/0.428/0.004/0.1701	T/0.415/-0.004/0.01385
12	<i>CCDC38</i>	rs1036429 96271428	FEV <sub>1</sub> /FVC	T/0.038/2.30e-11	C/0.21/0.006/0.050	C/0.162/0.004/0.399	T/0.809/0.004/0.06425
15	<i>THSD4</i>	rs12899618 71645120	FEV <sub>1</sub> /FVC	G/0.076/1.86e-15	G/0.152/-0.012/0.0007	G/0.12/-0.009/0.0507	A/0.854/-0.009/2.8e-04
16	<i>MMP15</i>	rs12447804 58075282	FEV <sub>1</sub> /FVC	T/-0.038/3.59e-08	T/0.79/-0.002/0.598	T/0.938/-0.001/0.911	T/0.191/0.002/0.528
16	<i>CFDP1</i>	rs2865531 75390316	FEV <sub>1</sub> /FVC	T/0.031/1.77e-11	T/0.592/-0.005/0.078	T/0.351/-0.006/0.05393	A/0.522/-0.005/0.0742
21	<i>KCNE2</i>	rs9978142 35652239	FEV <sub>1</sub> /FVC	T/-0.043/2.65e-08	T/0.849/0.002/0.558	T/0.799/0.002/0.530	A/0.83/0.001/0.677

The SNP with the lowest *p* value within each region or gene from the CHARGE/Spirometa consortium is listed ordered by chromosome number [10]. Quite a few SNPs met a nominal levels of significance using Bonferroni correction ( $P < 0.0018$  for the 28 regions tested)

\*In Table 4, while this SNP is not significant in our cohort and meta-analysis, rs12048582 in the TGF $\beta$ 2 gene was genome wide significant ( $p$ -value = 6.28E-09)

#### A comparison of post and pre bronchodilator FEV<sub>1</sub> and FEV<sub>1</sub>/FVC among NHW in the COPDGene cohort

Post bronchodilator pulmonary function provides the ability to separate individuals with reversible pulmonary function impairments, which is indicative of asthma from those individuals whose pulmonary function is not reversible with a bronchodilator. Thus, measuring post bronchodilator spirometry provides a phenotype that is more homogeneous with respect to the nature of the pulmonary function impairment. We hypothesized that a GWA of post bronchodilator FEV<sub>1</sub> and FEV<sub>1</sub>/FVC would be similar or more powerful than a GWA of pre bronchodilator FEV<sub>1</sub> and FEV<sub>1</sub>/FVC. To test this hypothesis, we performed a GWA of pre bronchodilator FEV<sub>1</sub> and FEV<sub>1</sub>/FVC in the COPDGene cohort among NHW. The correlation between pre and post bronchodilator FEV<sub>1</sub> is 0.95 and the correlation between pre and post bronchodilator FEV<sub>1</sub>/FVC is 0.98. Additional file 1: Tables S13 and S14 show the genome wide significant results for these analyses. The results for the GWA of pre bronchodilator FEV<sub>1</sub> are similar to those of post bronchodilator FEV<sub>1</sub> among NHW in the COPDGene cohort. 12 SNPs on chromosome 15 [*CHRNA3/5*] are significantly associated with post bronchodilator FEV<sub>1</sub> where as 8 SNPs in this region are significantly associated with pre bronchodilator FEV<sub>1</sub>. For both pre and post bronchodilator FEV<sub>1</sub>/FVC, the same 8 SNPs on chromosome 15 [*CHRNA3/5*] and the same 4 SNPs on chromosome 4 [*HHIP*] are significantly associated with these measures. These comparisons suggest that previous GWAS [7–13] are not biased due to the inclusion of individuals with bronchodilator reversibility. There appears to be only a

modest loss in signal in GWAS of pre bronchodilator FEV<sub>1</sub> compared to post bronchodilator FEV<sub>1</sub>, and no apparent difference in the signal between pre and post bronchodilator FEV<sub>1</sub>/FVC ratio.

#### Discussion

To the best of our knowledge, this is the first GWAS of post bronchodilator pulmonary function. These analyses were performed in a large cohort of current and former smokers with the full range of pulmonary function from normal values to severely impaired. We identified multiple loci that were genome wide significant for post bronchodilator FEV<sub>1</sub> and FEV<sub>1</sub>/FVC in both the COPDGene cohort and in the combined meta-analyses.

The most significant association for both FEV<sub>1</sub> and FEV<sub>1</sub>/FVC among NHW in the COPDGene cohort and in the combined meta analysis was on chromosome 15q25 [*CHRNA3*]. This region contains a cluster of nicotinic receptors that are associated with nicotine dependence, COPD case status, lower limit of normal for pre bronchodilator airway obstruction, lung cancer, and other smoking related traits [14–23]. A recent analysis by our group suggested this region may both directly and indirectly affect COPD affection status through nicotine dependence [24]. Other genes within this region in linkage disequilibrium also demonstrate significant associations with post bronchodilator FEV<sub>1</sub> and FEV<sub>1</sub>/FVC ratio including *CHRNA5/B4*, *IREB2*, *AGPHD1*, and *ADAMTS7*.

Our results suggest common genetic susceptibility to post bronchodilator FEV<sub>1</sub> and FEV<sub>1</sub>/FVC, pre bronchodilator measures of pulmonary function, and COPD affection status. We confirmed previous GWA association



with *HHIP*, *TGFB2*, *FAM13A*, *MMP12*, *MMP3*, *CYP2A7*, *CYP2A6*, and *RIN3* from previous studies with our results on post bronchodilator FEV1 and FEV1/FVC.

### Significant Spirometry Results associated with COPD

#### Affection status in COPDGene

In this study, we found that multiple genetic determinants of COPD affection status were associated with spirometric measures of lung function in COPDGene. These results are not at all surprising, since COPD is defined by lung function thresholds. In the GWAS results of COPD and severe COPD affection status in COPDGene [25], there was a significant association with affection status and SNPs in the 15q25 region [*CHRNA3*, *CHRNA5*, *CHRN4*, *AGPHD1*, and *IREB2*], *HHIP* on chromosome 4, *FAM13A* on chromosome 4, *TGFB2* on chromosome 1, *MMP3*/*MMP12* on chromosome 11, and *RIN3* on chromosome 14. We found evidence for all of these regions as genetic determinants of spirometric measures in COPDGene as well.

The region on 15q25 contains the genes *CHRNA3*, *CHRNA5*, *CHRN4*, *AGPHD1*, and *IREB2*, and numerous GWA have shown evidence of association of this region with COPD, emphysema, lung cancer, and smoking intensity [14–23]. Regions near *HHIP* [26–28], *FAM13A*, and *TGFB2* have been previously associated with lung function and COPD [8–10, 29]. In addition, SNPs in or near *AGER* have previously been reported in association with lung function and with emphysema [30].

The *RIN3* locus on chromosome 14 has not been previously associated with lung function, although SNPs in *RIN3* were associated with COPD affection status in the COPDGene study [25]. We identified an association near *RIN3* with FEV<sub>1</sub>/FVC in the COPDGene cohort. *RIN3*, a Rab5 GTPase binding protein, is expressed in many tissues, including the lung [31, 32].

#### Significant spirometry GWA results not significantly associated with affection status in COPDGene

While not previously associated with lung function, *DBH* on chromosome 9 has been associated with smoking intensity [33]. Our finding represents the first evidence of association of this locus with lung function. Although the SNP identified in this study (rs1108581) does not cause amino acid residue changes in *DBH*, gene expression may be modified either directly or through other variant(s) in strong LD. This view is supported by evidence that a genetic variant (C-1021T or rs1611115), located upstream of the *DBH* translational start site, accounts for 51 % of the variation in plasma-*DBH* activity in NHW [33]. SNPs near *CYP2A7* and *CYP2A6* on chromosome 19 have been associated with lung cancer, cigarette smoking, and COPD [34, 35]. Notably, both of these loci were significant despite adjustment for cigarette smoking status.

#### Novel nature of COPDGene study

The COPDGene study is novel in several ways. There are many subjects with severe and very severe COPD (GOLD spirometry grades 3–4). There were sufficient numbers of both AA and NHW subjects to allow reasonable power to detect a genetic association with quantitative spirometric measures in these stratified samples. COPDGene has carefully collected standardized spirometric measures and post-bronchodilator spirometry. In addition, all COPDGene subjects were former or current smokers.

#### Potential limitations

The COPDGene cohort was ascertained based on smoking status and GOLD stage. Analysing secondary phenotypes in a case–control study can be biased due to this ascertainment condition. However, this is only an issue for SNPs associated with both the ascertainment condition and the secondary phenotype. Since our analysis focused on measures of pulmonary function (one of the primary ascertainment conditions) and adjusted for smoking status, our analysis should be robust against this sampling bias [36]. While COPDGene includes both AA and NHW, the sample size of AA subjects was considerably smaller and therefore had limited statistical power.

#### Conclusions

The GWA of lung function measures in COPDGene identified a novel locus on chromosome 9/*DBH* among NHW as being associated with common spirometric measures, and replicated multiple previously reported genetic loci for lung function. Further research will be required to determine the functional genetic variants within these regions of association.

#### Methods

##### COPDGene study subjects

COPDGene is a multi-center study performed in the United States that has been described in detail previously [37]. The COPDGene study included 10,192 current and former smoking participants with at least 10 pack-years of cigarette smoking history and ages ranging from 45–81. Table 1 details characteristics of the COPDGene participants included in the genome-wide association analysis. We excluded subjects from the analysis with severe alpha-1 antitrypsin deficiency, genotyping failure, or spirometric tests which failed quality control review. This resulted in 9919 subjects (6659 NHW and 3260 AA). Among these subjects, there were 3641 COPD cases (2812 NHW and 821 AA) defined as having Global Initiative for Chronic Obstructive Lung Disease (GOLD) spirometry stages 2–4

with post-bronchodilator FEV<sub>1</sub>/FVC < 0.70 and FEV<sub>1</sub> < 80 % of predicted values.

#### Post bronchodilator spirometry measurements

Spirometry in COPDGene was performed using a standardized spirometer (EasyOne by ndd Medical Technologies, Inc, Andover, MA). Spirometry was performed at baseline and repeated approximately 20 min after two puffs (180 mcg) of albuterol administered through a spacer. The analyses in this manuscript focused on the post-bronchodilator spirometric values. Pulmonary function measurements were collected according to the American Thoracic Society/European Respiratory Society guidelines [38]. Methodology for spirometric measures have been described in detail previously [37].

#### Genotyping, quality control and imputation

All COPDGene subjects were genotyped using the Illumina HumanOmniExpress by Illumina (San Diego, CA). Details of genotyping quality control have been previously described [25]. Imputation on the COPDGene cohorts was performed using MaCH and minimac [39, 40]. Prephasing and imputation were both performed using 30 rounds and 200 states, with regions divided into 1 megabase and 500 kb flanks. Reference panels for the NHW and AA subjects were the 1000 Genomes Phase I v3 European (EUR) and cosmopolitan reference panels, respectively [41]. Variants with an R-squared value of  $\leq 0.3$  were removed from further analysis. SNPs with minor allele frequency less than 1 % were excluded. Further details concerning genotyping, quality control, and imputation are posted on the COPDGene website (<http://www.copdgene.org>). All SNP genomic locations are based on the NCBI37/hg19 assembly.

#### Meta-analysis study populations: ECLIPSE and GenKOLS

The Evaluation of COPD Longitudinally to Identify Predictive Surrogate Endpoints (ECLIPSE) was a longitudinal, prospective, observational study conducted at 46 clinical centers in 12 countries with genome-wide SNP data available from 1764 COPD cases and 178 current or ex-smoking controls [42]. The GenKOLS GWAS cohort consists of 863 COPD cases and 808 controls from Bergen, Norway. Genotyping methods and study descriptions for the GenKOLS and ECLIPSE cohorts have been described previously [43, 44]. We limited our analysis in both studies to current or ex-smokers of European descent.

#### Statistical analyses

GWA analyses were performed in PLINK (v1.07) and were stratified by race [45]. Linear regression analyses of

FEV<sub>1</sub> and the ratio of FEV<sub>1</sub>/FVC were adjusted for age, gender, pack-years, height and genetic ancestry (as summarized by principal components) by including these covariates in the model. The primary analyses were performed on the whole cohort (including smoking controls with normal spirometry and GOLD stages 2 to 4 COPD in all cohorts, and additionally individuals with unclassified spirometry [FEV<sub>1</sub> < 80 % predicted but FEV<sub>1</sub>/FVC  $\geq 0.7$ ], and GOLD stage 1 COPD with FEV<sub>1</sub>  $\geq 80$  % predicted but FEV<sub>1</sub>/FVC < 0.7 in COPDGene). A secondary analysis was limited to only GOLD 2–4 cases.

A fixed effects meta-analysis was performed using METAL (v 2010-08-01) [46] for FEV<sub>1</sub> and FEV<sub>1</sub>/FVC, adjusting for the same covariates mentioned above (age, gender, pack-years, height, genetic ancestry as summarized by principal components) for the COPDGene, ECLIPSE, and GenKOLS cohorts. Genome-wide significant associations were defined by  $P < 5 \times 10^{-8}$ . Suggestive associations were defined as  $5 \times 10^{-7} < P < 5 \times 10^{-8}$ .

#### Ethics

The COPDGene, ECLIPSE, and GenKOLS studies were all approved by the respective clinical center institutional review boards. The COPDGene, ECLIPSE, and GenKOLS studies met IRB protocol approved by the NHLBI for human subjects research. For the COPDGene study and the meta-analysis study conducted in this manuscript, we have obtained IRB approval from the Colorado Multiple Institutional Review Board (COMIRB) at the University of Colorado, Colorado School of Public Health.

#### Consent

We have obtained written informed consent from the subjects to participate in these studies. We have obtained written informed consent to publish from the participants of the COPDGene, ECLIPSE and GenKOLS studies and no individual patient data or individual clinical data is presented in this manuscript.

#### Availability of data and materials

The datasets used in this paper can be found at [http://www.ncbi.nlm.nih.gov/projects/gap/cgi-bin/study.cgi?study\\_id=phs000179.v1.p1](http://www.ncbi.nlm.nih.gov/projects/gap/cgi-bin/study.cgi?study_id=phs000179.v1.p1)

#### Additional file

**Additional file 1: The supplement for this manuscript contains the following information, tables, and figures.** The COPD Foundation funding and a list of the COPDGene and ECLIPSE investigators are given in the supplement. Tables S1–S12 list the top SNPs with a  $p$ -value  $< 5 \times 10^{-6}$  for FEV<sub>1</sub> and FEV<sub>1</sub>/FVC for all subjects and cases only among AA in the COPDGene study, NHW in the COPDGene study, and in the meta-analysis of the COPDGene, ECLIPSE

and the GenKOLS studies. Tables S13 and S14 provide a comparison of genome-wide significant results for pre and post bronchodilator FEV<sub>1</sub> and FEV<sub>1</sub>/FVC among NHW in the COPDGene study. Figures S1 and S2 are region plots for the genome-wide significant results for FEV<sub>1</sub> and FEV<sub>1</sub>/FVC, respectively, in the meta-analysis. (DOC 15181 kb)

### Abbreviations

COPD: Chronic obstructive pulmonary disease; SNP: Single nucleotide polymorphism; MAF: Minor allele frequency; AA: African American; NHW: Non-Hispanic White; FEV<sub>1</sub>: Forced expiratory volume in the first second; FVC: Forced vital capacity, the total volume of air expired after a maximal inhalation; GWAS: Genome wide association study.

### Competing interests

Regarding conflicts of interest, in the past three years, Edwin K. Silverman received honoraria and consulting fees from Merck and grant support and consulting fees from GlaxoSmithKline. Craig Hersh received lecture fee from Novartis and consulting fees from CSL Behring. David Lomas is a consultant and has received grant support and honoraria from GlaxoSmithKline. He chairs the Respiratory Therapy Area Board at GlaxoSmithKline. No other authors reported conflicts of interest. The funding sources played no role in the design of the study or the decision to submit the manuscript for publication.

### Authors' contributions

SL and MC ran the statistical analyses. SL and KY produced the figures and tables for the manuscript and supplement. ES and JH supervised the project. SL, MC, KY, CH, PC, MM, ER, MM, DD, MP, MF, BM, RJ, RC, DL, SB, PB, AG, JC, TB, NL, CL, JH, and ES were involved in drafting and editing the paper, directing the analyses, and assisting in the literature review. All authors read and approved the final manuscript.

### Acknowledgements

Research reported in this publication was supported by the National Heart, Lung, and Blood Institute of the National Institutes of Health under Award Number K01HL125858 (S.M.L.). The content is solely the responsibility of the authors and does not necessarily represent the official views of the National Institutes of Health.

This work was also supported by National Heart, Lung and Blood Institute NHLBI R01 HL084323, P01 HL083069, P01 HL105339 and R01 HL089856 (E.K.S.); K08 HL097029 and R01 HL113264 (M.H.C.), and R01 HL089897 (J.D.C.), and a grant from the Alpha-1 Foundation (M.H.C.). The COPDGene study (NCT00608764) is also supported by the COPD Foundation through contributions made to an Industry Advisory Board comprised of AstraZeneca, Boehringer Ingelheim, Novartis, Pfizer, GlaxoSmithKline, Siemens, and Sunovion. The Norway GenKOLS study (Genetics of Chronic Obstructive Lung Disease, GSK code RES11080), and the ECLIPSE study (NCT00292552; GSK code SCO104960) were funded by GlaxoSmithKline. The funding sources played no role in the design of the study or the decision to submit the manuscript for publication.

### Author details

<sup>1</sup>Department of Biostatistics, University of Colorado Anschutz Medical Campus, 13001 E. 17th Place, B119 Bldg. 500, W3128, Aurora, CO 80045, USA.

<sup>2</sup>Channing Division of Network Medicine, Brigham and Women's Hospital, Harvard Medical School, Boston, MA, USA. <sup>3</sup>Department of Epidemiology, Colorado School of Public Health, University of Colorado Anschutz Medical Campus, Aurora, CO, USA. <sup>4</sup>Department of Medicine, National Jewish Health, Denver, CO, USA. <sup>5</sup>Department of Epidemiology, Johns Hopkins Bloomberg School of Public Health, Baltimore, MD, USA. <sup>6</sup>Morehouse School of Medicine, Atlanta, GA, USA. <sup>7</sup>Division of Pulmonary, Allergy & Critical Care Medicine, LDS Hospital, Salt Lake City, UT, USA. <sup>8</sup>Los Angeles Biomedical Research Institute at Harbor-UCLA Medical Center, Torrance, CA, USA. <sup>9</sup>Wolfson Institute for Biomedical Research, University College London, London, UK. <sup>10</sup>Division of Pulmonary, Allergy, and Critical Care Medicine, University of Alabama at Birmingham, Birmingham, AL, USA. <sup>11</sup>Department of Clinical Science, University of Bergen, Bergen, Norway. <sup>12</sup>Department of Biostatistics, Harvard School of Public Health, Boston, MA, USA.

Received: 27 February 2015 Accepted: 20 November 2015

Published online: 03 December 2015

### References

1. Minino A, Xu J, Kochanek K. Deaths: preliminary data for 2008. *Natl Vital Stat Rep.* 2010;59:1–52.
2. Wan ES, Silverman EK. Genetics of COPD and emphysema. *Chest.* 2009;136:859–66.
3. Weiss ST. Lung function and airway diseases. *Nat Genet.* 2010;42(1):14–6.
4. Silverman EK, Vestbo J, Agusti A, Anderson W, Bakke PS, Barnes KC, et al. Opportunities and challenges in the genetics of COPD 2010: an International COPD Genetics Conference report. *COPD.* 2011;8:121–35.
5. Rabe KF, Hurd S, Anzueto A, Barnes PJ, Buist SA, Calverley P, et al. Global Initiative for Chronic Obstructive Lung Disease. Global strategy for the diagnosis, management, and prevention of chronic obstructive pulmonary disease: Gold executive summary. *Am J Respir Crit Care Med.* 2007;176:532–55.
6. Wilk JB, DeStefano AL, Arnett DK, Rich SS, Djousse L, Crapo RO, et al. A genome-wide scan of pulmonary function measures in the National Heart, Lung, and Blood Institute Family Heart Study. *Am J Respir Crit Care Med.* 2003;167:1528–33.
7. Wilk JB, Chen TH, Gottlieb DJ, Walter RE, Nagle MW, Brandler BJ, et al. A genome-wide association study of pulmonary function measures in the Framingham Heart Study. *PLoS Genet.* 2009;3(5):e1000429.
8. Hancock DB, Eijgelsheim M, Wilk JB, Gharib SA, Loehr LR, Marcicante KD, et al. Meta-analyses of genome-wide association studies identify multiple loci associated with pulmonary function. *Nat Genet.* 2010;42:45–52.
9. Repapi E, Sayers I, Wain LV, Burton PR, Johnson T, Obeidat M, et al. Genome-wide association study identifies five loci associated with lung function. *Nat Genet.* 2010;42:36–44.
10. Soler Artigas M, Loth DW, Wain LV, Gharib SA, Obeidat M, Tang W, et al. Genome-wide association and large-scale follow up identifies 16 new loci influencing lung function. *Nat Genet.* 2011;43:1082–90.
11. Wilk JB, Shrine NRG, Loehr LR, Zhao JH, Manichaikul A, Lopez LM, et al. Genome-Wide Association Studies Identify CHRNA5/3 and HTR4 in the Development of Airflow Obstruction. *Am J Respir Crit Care Med.* 2012; 186(7):622–32.
12. Siedlinski M, Cho MH, Bakke P, Gulsvik A, Lomas DA, Anderson W, et al. Genome-wide association study of smoking behaviours in patients with COPD. *Thorax.* 2011;66(10):894–902.
13. Thyagarajan B, Wojczynski M, Minster RL, Sanders J, Barral S, Christiansen L, et al. Genetic variants associated with lung function: the long life study. *Respir Res.* 2014;15:134.
14. Lambrechts D, Buyschaert I, Zanen P, Coolen J, Lays N, Cuppens H, et al. The 15q24/25 susceptibility variant for lung cancer and chronic obstructive pulmonary disease is associated with emphysema. *Am J Respir Crit Care Med.* 2010;181:486–93.
15. Castaldi PJ, Cho MH, Litonjua AA, Bakke P, Gulsvik A, Lomas DA, et al. The association of genome-wide significant spirometric loci with COPD susceptibility. *Am J Respir Cell Mol Biol.* 2011;45:1147–53.
16. DeMeo DL, Mariani T, Bhattacharya S, Srisuma S, Lange C, Litonjua A, et al. Integration of genomic and genetic approach implicates IREB2 as a COPD susceptibility gene. *Am J Hum Genet.* 2009;85:493–502.
17. Zhang J, Summah H, Zhu YG, Qu JM. Nicotinic acetylcholine receptor variants associated with susceptibility to chronic obstructive pulmonary disease: a meta-analysis. *Respir Res.* 2011;12:158.
18. Hardin M, Zielinski J, Wan ES, Hersh CP, Castaldi PJ, Schwinder E, et al. CHRNA3/5, IREB2, and ADCY2 Are Associated with Severe Chronic Obstructive Pulmonary Disease in Poland. *Am J Respir Cell Mol Biol.* 2012; 47(2):203–8.
19. Hung RJ, McKay JD, Gaborieau V, Boffetta P, Hashibe M, Zaridze D, et al. A susceptibility locus for lung cancer maps to nicotinic acetylcholine receptor subunit genes on 15q25. *Nature.* 2008;452:633–7.
20. Amos CI, Wu X, Broderick P, Gorlov IP, Gu J, Eisen T, et al. Genome-wide association scan of tag SNPs identifies a susceptibility locus for lung cancer at 15q25.1. *Nat Genet.* 2008;40:616–22.
21. Gu M, Dong X, Zhang X, Wang X, Qi Y, Yu J, et al. Strong Association between Two Polymorphisms 15q25.1 on and Lung Cancer Risk: A Meta-Analysis. *Plos ONE.* 2012;7(6):e37970.
22. Spitz MR, Amos CI, Dong Q, Lin J, Wu X. The CHRNA5-A3 Region on Chr 15q24-25.1 Is a Risk Factor Both for Nicotine Dependence and for Lung Cancer. *J Natl Cancer Inst.* 2008;100:1552–6.

23. Sakoda LC, Loomis MM, Doherty JA, Neuhauser ML, Barnett MJ, Thornquist MD, et al. Chr 15q24-25.1 variants, diet, and lung cancer susceptibility in cigarette smokers. *Cancer Causes Control*. 2011;22:449–61.
24. Siedlinski M, Tingley D, Lipman PJ, Cho MH, Litonjua AA, Sparrow D, et al. Dissecting direct and indirect genetic effects on chronic obstructive pulmonary disease (COPD) susceptibility. *Hum Genet*. 2013;132(4):431–41.
25. Cho MH, McDonald MN, Zhou X, Siedlinski M, Hersh CP, Demeo DL, et al. A genome-wide association identifies risk loci for severe chronic obstructive pulmonary disease. *Lancet Respir*. 2014;2:214–25.
26. Zhou X, Baron RM, Hardin M, Cho MH, Zielinski J, Hawrylkiewicz I, et al. Identification of a chronic obstructive pulmonary disease genetic determinant that regulates HHIP. *Hum Mol Genet*. 2012;21:1325–35.
27. Young RP, Whittington CF, Hopkins RJ, Hay BA, Epton MJ, Black PN, et al. Chr 4q31 locus in COPD is also associated with lung cancer. *Eur Respir J*. 2010;36:1375–82.
28. Van Durme YM, Eijgelsheim M, Joos GF, Hofman A, Uitterlinden AG, Brusselle GG, et al. Hedgehog-interacting protein is a COPD susceptibility gene: the Rotterdam Study. *Eur Respir J*. 2010;36:89–95.
29. Young RP, Hopkins RJ, Hay BA, Whittington CF, Epton MJ, Gamble GD. FAM13A locus in COPD is independently associated with lung cancer—evidence of a molecular genetic link between COPD and lung cancer. *Appl Clin Genet*. 2011;4:1–10.
30. Manichaikul A, Hoffman EA, Smolonska J, Gao W, Cho MH, Baumhauer H, et al. Genome-wide study of percent emphysema on computed tomography in the general population. The multi-ethnic study of atherosclerosis lung/SNP Health Association Resource Study. *Am J Respir Crit Care Med*. 2014;189(4):408–18.
31. Kajihio H, Saito K, Tsujita K, Kontani K, Araki Y, Kurosu H, et al. RIN3: a novel Rab5 GEF interacting with amphiphysin II involved in the early endocytic pathway. *J Cell Sci*. 2003;116:4159–68.
32. Saito K, Murai J, Kajihio H, Kontani K, Kurosu H, Katada T. A novel binding protein composed of homophilic tetramer exhibits unique properties for the small GTPase Rab5. *J Biol Chem*. 2002;277:3412–8.
33. Zabetian CP, Anderson GM, Buxbaum SG, Elston RC, Ichinose H, Nagatsu T, et al. A quantitative-trait analysis of human plasma-dopamine beta-hydroxylase activity: evidence for a major functional polymorphism at the DBH locus. *Am J Hum Genet*. 2001;68:515–22.
34. Wang L, Zang W, Liu J, Xie D, Ji W, Pan Y, et al. Association of CYP2A6\*4 with susceptibility of lung cancer: a meta-analysis. *PLoS One*. 2013;8(4):e59556.
35. Cho MH, Castaldi PJ, Wan ES, Siedlinski M, Hersh CP, Demeo DL, et al. A genome-wide association study of COPD identifies a susceptibility locus on chr 19q13. *Hum Mol Genet*. 2012;21:947–57.
36. Lutz SM, Hokanson JE, Lange C. An alternative hypothesis testing strategy for secondary phenotype data in case-control genetic association studies. *Front Genet*. 2014; (In Press) (doi:10.3389/fgene.2014.00188)
37. Regan EA, Hokanson JE, Murphy JR, Make B, Lynch DA, Beaty TH, et al. Genetic epidemiology of COPD (COPDGene) study design. *COPD*. 2010;7:32–43.
38. Miller MR, Hankinson J, Brusasco V, Burgos F, Casaburi R, Coates A, et al. Standardisation of spirometry. *Eur Respir J*. 2005;26:319–38.
39. Howie B, Fuchsberger C, Stephens M, Marchini J, Abecasis GR. Fast and accurate genotype imputation in genome-wide association studies through pre-phasing. *Nat Genet*. 2012;44:955–9.
40. Li Y, Willer CJ, Ding J, Scheet P, Abecasis GR. MaCH: sing sequence and genotype data to estimate haplotypes and unobserved genotypes. *Genet Epidemiol*. 2010;34:816–34.
41. 1000 Genomes Project Consortium, Abecasis GR, Auton A, Brooks LD, DePristo MA, Durbin RM, et al. An integrated map of genetic variation from 1,092 human genomes. *Nature*. 2010;491:56–65.
42. Vestbo J, Anderson W, Coxson HO, Crim C, Dawber F, Edwards L, et al. Evaluation of COPD Longitudinally to Identify Predictive Surrogate End-points (ECLIPSE). *Eur Respir J*. 2008;31:869–73.
43. Pillai SG, Ge D, Zhu G, Kong X, Shianna KV, Need AC, et al. A genome-wide association study in chronic obstructive pulmonary disease (COPD): Identification of two major susceptibility loci. *PLoS Genet*. 2009;5(3):e1000421.
44. Cho MH, Boutaoui N, Klanderman BJ, Sylvia JS, Ziniti JP, Hersh CP, et al. Variants in FAM13A are associated with chronic obstructive pulmonary disease. *Nat Genet*. 2010;42(3):200–1.
45. Purcell S, Neale B, Todd-Brown K, Thomas L, Ferreira MA, Bender D, et al. PLINK: a tool set for whole-genome association and population-based linkage analyses. *Am J Hum Genet*. 2007;81:559–75.
46. Willer CJ, Li Y, Abecasis GR. METAL: fast and efficient meta-analysis of genomewide association scans. *Bioinformatics*. 2010;26:2190–1.

Submit your next manuscript to BioMed Central and we will help you at every step:

- We accept pre-submission inquiries
- Our selector tool helps you to find the most relevant journal
- We provide round the clock customer support
- Convenient online submission
- Thorough peer review
- Inclusion in PubMed and all major indexing services
- Maximum visibility for your research

Submit your manuscript at  
[www.biomedcentral.com/submit](http://www.biomedcentral.com/submit)

