



Characteristics of Inflammatory Bowel Disease Serology in Patients With Indeterminate Colitis

Citation

Sura, Siddharth P., Awais Ahmed, Adam S. Cheifetz, and Alan C. Moss. 2014.
"Characteristics of Inflammatory Bowel Disease Serology in Patients With Indeterminate
Colitis." *Journal of Clinical Gastroenterology* 48 (4) (April): 351–355. doi:10.1097/mcg.0000000000000083.

Published version

<https://doi.org/10.1097/MCG.0000000000000083>

Link

<http://nrs.harvard.edu/urn-3:HUL.InstRepos:33942643>

Terms of use

This article was downloaded from Harvard University's DASH repository, and is made available under the terms and conditions applicable to Other Posted Material (LAA), as set forth at

<https://harvardwiki.atlassian.net/wiki/external/NGY5NDE4ZjgzNTc5NDQzMGIzZWZhMGFIOWI2M2EwYTg>

Accessibility

<https://accessibility.huit.harvard.edu/digital-accessibility-policy>

Share Your Story

The Harvard community has made this article openly available.
Please share how this access benefits you. [Submit a story](#)



Published in final edited form as:

J Clin Gastroenterol. 2014 April ; 48(4): 351–355. doi:10.1097/MCG.0000000000000083.

Characteristics of Inflammatory Bowel Disease Serology in Patients with Indeterminate Colitis

Siddharth P. Sura, M.D., M.P.H.¹, Awais Ahmed, M.B.B.S.², Adam S. Cheifetz, M.D.², and Alan C. Moss, M.D., F.A.C.G.²

¹Division of Digestive Diseases, Emory University School of Medicine, Atlanta, GA

²Division of Gastroenterology, Beth Israel Deaconess Medical Center, Harvard Medical School, Boston, MA

Abstract

Goals and Background—Inflammatory bowel disease (IBD) serology testing is often used in patients with indeterminate colitis (IC) to help distinguish between ulcerative colitis (UC) and Crohn’s disease (CD). We investigated the performance of serology testing in predicting future diagnosis in this setting.

Study—Observational study of individuals with IC at a single center who underwent IBD serology testing (pANCA, ASCA and anti-OmpC) and had at least 12 months follow-up from time of serology result.

Results—117 individuals with IC and 1 year follow-up data were enrolled. All IC patients had endoscopic and histologic evidence of colitis at enrollment. One year after serology testing, 58 (50%) individuals with IC were diagnosed with UC, 49 (42%) with CD, and 10 (9%) remained labeled with IC. The sensitivity/specificity of an initial positive pANCA for a subsequent diagnosis of UC was 78%/44%. For ASCA and anti-OmpC, the results were 18%/84% and 27%/75%, respectively, for a subsequent diagnosis of CD. A positive pANCA test was associated with a likelihood ratio (LR) of 1.4 (95% CI: 1.1–1.8) for a subsequent diagnosis of UC at 1 year. Neither positive ASCA (LR 1.1; 95% CI: 0.5–2.5) nor anti-OmpC (LR 1.1; 95% CI: 0.6–2.0) was associated with a subsequent diagnosis CD in patients with IC.

Conclusions—The disease phenotype in the majority of individuals initially labeled with IC evolved to be more consistent with either UC or CD on follow-up. pANCA, ASCA, and anti-OmpC, individually, were of limited utility in predicting a patient’s subsequent disease phenotype.

Keywords

Crohn’s disease; ulcerative colitis; indeterminate colitis; diagnostics

Introduction

Inflammatory bowel disease (IBD) is a chronic inflammatory condition of the mucosa of the intestinal tract. The majority of individuals with IBD have disease characteristics consistent with either Crohn’s disease (CD) or ulcerative colitis (UC) based on clinical, radiological, endoscopic, and histological features^{1,2}. A number of serum antibodies have also been associated with a diagnosis of CD or UC, including anti-*Saccharomyces cerevisiae* antibody

Corresponding author: Siddharth P. Sura, M.D., M.P.H., 185 Montag Circle NE #319, Atlanta, GA 30307, Phone: (919)696-1918, Fax: (404)727-5767, siddharth.sura@emory.edu.

Conflict of Interest Disclosure: ASC has served on advisory boards for Prometheus Laboratories Inc.

(ASCA), perinuclear anti-neutrophil cytoplasmic antibody (pANCA), anti-outer membrane porin C antibody (anti-OmpC), and anti-CBir1 flagellin antibody (anti-CBir1). Published studies have reported the sensitivity and specificity of these antibody assays when distinguishing CD or UC from healthy or non-IBD diarrheal controls³.

The distinction between CD and UC at the time of initial diagnosis still has importance in patient management in this era; early intervention with biologic therapies has been advocated to reduce disease-related complications in CD, a strategy that is not the case in UC¹. In addition, the extent and type of surgical management of refractory disease is different for patients with UC and CD. Approximately 10–15% of individuals with features of IBD lack definitive evidence to discriminate between UC or CD; these individuals are typically described as having “indeterminate colitis” (IC)⁴. Although originally a descriptive term for colectomy specimens with features of both UC and CD, in clinical practice it encompasses those patients with chronic intestinal inflammation in which clinical features, including endoscopic and biopsy findings, are inadequate to make a definitive diagnosis of either UC or CD^{5,6}.

In 2005, a Working Party at the World Congress of Gastroenterology proposed a new term, inflammatory bowel disease unclassified (IBDU), to classify these patients, although this has yet to become widely used⁷. One of the outcomes of this Working Party was the recommendation that the role of serological markers be assessed in this patient population⁸. In the view of some experts, the classification of IC is a provisional one and, over time or with further investigations, many of these patients will be re-classified as having CD or UC^{9,10}. However, only one published study to-date has examined the value of IBD serology assays specifically in patients with IC¹¹.

The aim of this study was to define further the test characteristics of IBD serology in predicting a subsequent CD or UC diagnosis in a cohort of individuals with IC.

Materials and Methods

From an initial cohort of individuals who underwent IBD serology testing at a major academic medical center from 2001 to 2007, those diagnosed with IC and with at least one year follow-up after serology testing were selected. The electronic medical records (clinical notes, endoscopy, pathology and radiology reports) were reviewed by a single reviewer (SS) to confirm the established diagnosis of IC, with uncertain cases reviewed by the senior author (ACM). Only cases meeting the clinical criteria proposed by the International Organization for Inflammatory Bowel Disease for a diagnosis of IC were included; “patients who appear to have IBD colitis but who cannot be readily classified when all clinical, radiological, endoscopic, histologic, and serologic data are taken into account”⁴.

All individuals underwent ASCA, pANCA, and anti-OmpC testing (*IBD Serology*, Prometheus Inc., San Diego, CA). Eight of 117 individuals underwent anti-CBir1 antibody testing due to its late addition to commercially available panels. Positive tests were defined as values greater than assay reference values, similar to methodology used in prior studies^{12,13}. For ASCA, a positive IgA or IgG indicated a positive result. For pANCA, a positive ELISA test regardless of indirect immunofluorescence assay (IFA) result indicated a positive test.

The appropriate institutional IRB approval was attained prior to initiating the retrospective chart review. Data collection involved review of clinician notes, laboratory data, imaging studies, pathology reports, and serology results. At one year following IBD serology testing, patient records and results were examined to establish clinical diagnosis at the follow-up

time-point (IC, UC, or CD). The follow-up diagnosis of each subject was confirmed by the authors based on accepted criteria, and blinded to the serology results (Suppl. Table 1)^{14,15}.

Data analysis was conducted with JMP, Version 8 (SAS Institute Inc., Cary, NC). To determine associations between antibody and disease, Wilcoxon rank sum test was used for continuous outcomes and Pearson's chi-square test for dichotomous outcomes. Two-by-two tables were used to calculate test characteristics. Finally, likelihood ratios for each antibody were also calculated to determine clinical usefulness, as performed in a prior study¹⁶. Sensitivity, specificity and likelihood ratios were based on calculations including only the inception IC cohort; healthy controls and patients with gastrointestinal illness without evidence of IBD were not included.

Results

Characteristics of IC Cohort

Of an initial cohort of individuals who underwent IBD serology testing from 2001 to 2007, 117 had a diagnosis of IC at the time of serology testing, and had at least one year of follow-up data (Table 1). Consistent with criteria for IC, all individuals had abnormal colonoscopies and evidence of chronic inflammation. Sixteen individuals also had abnormalities in the ileum noted on small bowel follow through and/or CT/MRI, in addition to continuous endoscopic colorectal involvement. Patients with prior colectomies for UC were classified as IC after developing subsequent manifestations suspicious for the alternative diagnosis (e.g. perianal fistulas or complicated pouchitis).

Of the 117 patients with a diagnosis of IC at time of enrollment, 58 (50%) were reclassified as having UC, 49 (42%) as CD, and 10 (9%) remained classified as IC after 12 months follow-up.

Test Characteristics of IBD Serology in IC

In the IC cohort at baseline, 67% of patients were pANCA positive by ELISA, 17% had elevated ASCA, and 26% had elevated OmpC levels. Mean (standard deviation) levels of pANCA IgG, ASCA IgA, ASCA IgG, and anti-OmpC IgA are noted in Table 2. The percent of individuals with elevated levels of each antibody, grouped according to their diagnosis at 12 months, is shown in Table 3. The prevalence of ASCA and anti-OmpC were similar in patients later diagnosed as UC and CD in the IC population. The presence of pANCA differentiated a subsequent diagnosis of UC from CD ($p=0.008$) in patients initially diagnosed with IC. None of the other serological tests distinguished a subsequent diagnosis of UC from CD, or either diagnosis from IC, in this patient population.

Test characteristics were calculated using 2x2 tables (Table 4). Test characteristics of anti-CBir1 were not determined due to the small number of individuals undergoing testing ($n=8$). The sensitivity and specificity of ASCA and anti-OmpC were similar for a subsequent diagnosis of either CD or UC in patients initially diagnosed with IC. pANCA demonstrated improved sensitivity and specificity for a subsequent diagnosis of UC in this population.

The positive and negative likelihood ratios of pANCA for a diagnosis of UC at one year were 1.4 (95% CI: 1.1–1.8) and 0.5 (95% CI: 0.3–0.9), respectively (Figure 1). pANCA testing also had some utility for excluding CD; the positive and negative likelihood ratios of a diagnosis of CD at one year were 0.7 (95% CI: 0.5–0.9) and 2.0 (95% CI: 1.4–3.0), respectively.

Discussion

At present, the diagnosis of IBD is based upon history and endoscopic, radiologic and/or histological data. Serologic testing for antibodies to intrinsic or extrinsic antigens has become a complementary part of this process in clinical practice. These assays have been recommended as tools to assist in diagnosis and “as predictors of an individual’s disease course”¹⁷.

Positive ASCA was previously shown to be 41–76% sensitive and 86–98% specific for a diagnosis of CD when compared to healthy controls and individuals with UC¹². Several subsequent studies have supported this pattern of moderate sensitivity with good to excellent specificity for CD^{18–22}. Antibodies to both OmpC or CBir1 have poor sensitivity for CD but are associated with subsets of complicated CD^{23–25}. pANCA has a reported sensitivity of 50–68% and specificity of 82–94% for UC in cohorts comprised of various combinations of patients with UC, CD, or non-IBD diarrheal illness and healthy controls^{18;20–22;26}. A meta-analysis of 60 studies concluded similar test characteristics²⁷.

Studies assessing the combination of ASCA and pANCA assays for diagnosis of CD and UC have shown mixed results; whereas some found reduced sensitivity and improved specificity^{21;22;26}, others demonstrated no significant change in diagnostic value^{18;20}. As a consequence, some expert groups have advised against using serology testing in screening for IBD alone¹⁵.

In clinical practice, and based on this data (above), serology is frequently used when trying to distinguish between UC and CD in patients with IC, despite a lack of data to assess its performance⁴. Joossens et al. assessed the role of ASCA and pANCA, and later anti-OmpC and anti-I2, in 97 individuals with IC^{11;28}. At one year, sensitivity/specificity of ASCA and pANCA for a CD and UC diagnosis was 59%/75% and 57%/81%, respectively; combining the two assays reduced the sensitivity and improved the specificity modestly. Adding anti-OmpC and anti-I2 antibody serologies in a subsequent study of the same population showed a marginal improvement in positive predictive value with a significant drop in specificity. At four years from initial evaluation, the majority of individuals remained in the IC cohort, increasing suspicion for a potential separate phenotype within IBD²⁸.

In comparison to findings by Joossens et al., other groups have reported a diagnostic change from IC to CD or UC at 1 to 2 years in up to 50% of patients^{11;21;29}. This is the basis for the concept that IC is a “disease in evolution”⁹. The majority of subjects in our study were classified with a diagnosis of CD or UC at 12 months. Of an initial cohort of 117 individuals, 58 (50%) met criteria for UC and 49 (42%) for CD at 1 year. The difference may be related to narrow diagnostic criteria used by Joossens et al.; classification for CD, for example, required “characteristic small bowel involvement, when fistula occurred, or when granulomas were found at biopsy” which would exclude many patients with colonic CD¹¹. Regardless of whether the label of IC remains fixed or stable over time, IBD serology is frequently used to distinguish UC from CD in this patient population⁸.

The value of the individual antibodies for predicting diagnosis at one year differed in comparison to that reported in prior studies of populations with less obscure disease patterns. ASCA and anti-OmpC showed good specificity (84% and 75%, respectively) and poor sensitivity (18% and 27%, respectively) for CD. The specificity may be lower than previously reported given the absence of healthy controls or individuals with known non-IBD illness in our study. The sensitivity would be expected to be unchanged by individuals with non-IBD illness included in the cohort; rather, reduced sensitivity in our study may be due to a unique CD population with slowly evolving disease phenotype.

Although usually associated with CD alone, the diagnostic value of ASCA and anti-OmpC were similar for UC. This suggests potential serologic overlap in this population with atypical presentation for CD or UC, similar to their phenotypic overlap.

pANCA showed a reverse pattern from that previously reported, with sensitivity (78%) greater than specificity (44%) for UC. As stated above, the decreased specificity may be related to exclusion of healthy controls and individuals with known non-IBD gastrointestinal illness. The sensitivity of pANCA for UC in our study was slightly higher than previously reported values; at four years follow-up, only 47% of individuals with UC in the Joossens et al. study had a positive pANCA¹¹. Some difference may be attributable to technique; whereas test characteristics in our study were based on pANCA ELISA testing, Joossens et al. used pANCA IFA²⁸.

Amongst the IBD serologic assays studied, only pANCA provided modest diagnostic utility in this study. In patients with IC and *high* clinical suspicion for UC, a positive pANCA can increase the posttest probability for UC and decrease that for CD. Emphasis in this statement is given to high clinical suspicion, given that the likelihood ratios close to one correlate to a change in post-test probability of less than 15%³⁰. More useful clinically may be pANCA testing in individuals with IC with low suspicion for UC and high suspicion for CD; in this cohort, a negative pANCA can decrease the post-test probability for UC and increase the post-test probability for CD by approximately 15%.

Limitations to this study include the retrospective review of patients' records, and the lack of results from a definitive IBD cohort for comparison. In addition, as shown previously, the classification of a patient with IC, versus CD, versus UC is subject to some subjective criteria and interobserver variation³¹. To minimize the effects of these limitations we used a comprehensive electronic medical record (EMR) to collect patient data, and a single reviewer used pre-defined criteria to classify individuals in each category for outcome measures.

We were unable to determine the characteristics of all the available serologies in this patient cohort, including CBir1 and anti-flagellin, as only ASCA, ANCA and OmpC were included in the Prometheus panel for the majority of this study. Whether a more extensive panel of antibodies would yield greater test characteristics in this patient population is unknown. The paucity of comparable studies in the literature on this topic, despite widespread use of IBD serology for patients with IC, highlights the need for further data in this field⁸.

In conclusion, this study suggests that many patients with a diagnosis of IC will be reclassified as having UC or CD over time, as their disease pattern evolves. In patients with IC, a positive pANCA may predict a subsequent diagnosis of UC, whereas negative pANCA may predict a subsequent diagnosis of CD. The overall ability of IBD serology to predict an individual's subsequent disease profile (UC, or CD, or IC) is modest at best.

Supplementary Material

Refer to Web version on PubMed Central for supplementary material.

Acknowledgments

Sources of support requiring acknowledgment: ACM is supported by K23 DK084338 from NIDDK

Abbreviations

anti-CBir1	anti-CBir1 flagellin antibody
anti-OmpC	anti-outer membrane porin C antibody
ASCA	anti- <i>Saccharomyces cerevisiae</i> antibody
CD	Crohn's disease
IC	indeterminate colitis
IBD	inflammatory bowel disease
pANCA	perinuclear anti-neutrophil cytoplasmic antibody
UC	ulcerative colitis

Reference List

- Kornbluth A, Sachar DB. Ulcerative colitis practice guidelines in adults: American College Of Gastroenterology, Practice Parameters Committee. *Am J Gastroenterol.* 2010; 105:501–23. [PubMed: 20068560]
- Sands BE. From symptom to diagnosis: clinical distinctions among various forms of intestinal inflammation. *Gastroenterology.* 2004; 126:1518–32. [PubMed: 15168364]
- Sandborn WJ. Serologic markers in inflammatory bowel disease: state of the art. *Rev Gastroenterol Disord.* 2004; 4:167–74. [PubMed: 15580151]
- Geboes K, Colombel JF, Greenstein A, et al. Indeterminate colitis: a review of the concept--what's in a name? *Inflamm Bowel Dis.* 2008; 14:850–857. [PubMed: 18213696]
- Price AB. Overlap in the spectrum of non-specific inflammatory bowel disease--'colitis indeterminate'. *J Clin Pathol.* 1978; 31:567–77. [PubMed: 670413]
- Tremaine WJ. Review article: Indeterminate colitis--definition, diagnosis and management. *Aliment Pharmacol Ther.* 2007; 25:13–17. [PubMed: 17229217]
- Silverberg MS, Satsangi J, Ahmad T, et al. Toward an integrated clinical, molecular and serological classification of inflammatory bowel disease: Report of a Working Party of the 2005 Montreal World Congress of Gastroenterology. *Can J Gastroenterol.* 2005; 19 (Suppl A):5–36.
- Satsangi J, Silverberg MS, Vermeire S, Colombel JF. The Montreal classification of inflammatory bowel disease: controversies, consensus, and implications. *Gut.* 2006; 55:749–53. [PubMed: 16698746]
- Geboes K, De Hertogh G. Indeterminate colitis. *Inflamm Bowel Dis.* 2003; 9:324–31. [PubMed: 14555917]
- Tremaine WJ. Is indeterminate colitis determinable? *Curr Gastroenterol Rep.* 2012; 14:162–65. [PubMed: 22314810]
- Joossens S, Reinisch W, Vermeire S, et al. The value of serologic markers in indeterminate colitis: a prospective follow-up study. *Gastroenterology.* 2002; 122:1242–47. [PubMed: 11984510]
- Vermeire S, Joossens S, Peeters M, et al. Comparative study of ASCA (Anti-*Saccharomyces cerevisiae* antibody) assays in inflammatory bowel disease. *Gastroenterology.* 2001; 120:827–33. [PubMed: 11231936]
- Davis MK, Andres JM, Jolley CD, Novak DA, Haafiz AB, Gonzalez-Peralta RP. Antibodies to *Escherichia coli* outer membrane porin C in the absence of anti-*Saccharomyces cerevisiae* antibodies and anti-neutrophil cytoplasmic antibodies are an unreliable marker of Crohn disease and ulcerative colitis. *J Pediatr Gastroenterol Nutr.* 2007; 45:409–13. [PubMed: 18030205]
- Lennard-Jones JE, Shivananda S. Clinical uniformity of inflammatory bowel disease a presentation and during the first year of disease in the north and south of Europe. EC-IBD Study Group. *Eur J Gastroenterol Hepatol.* 1997; 9:353–59. [PubMed: 9160197]

15. Stange EF, Travis SP, Vermeire S, et al. European evidence based consensus on the diagnosis and management of Crohn's disease: definitions and diagnosis. *Gut*. 2006; 55 (Suppl 1):i1–15. [PubMed: 16481628]
16. Vermeulen N, Vermeire S, Rutgeerts P, Bossuyt X. Likelihood ratio for Crohn's disease as a function of anti-Saccharomyces cerevisiae antibody concentration. *Inflamm Bowel Dis*. 2010; 16:5–6. [PubMed: 19266569]
17. Dubinsky MC. Serologic and laboratory markers in prediction of the disease course in inflammatory bowel disease. *World J Gastroenterol*. 2010; 16:2604–8. [PubMed: 20518081]
18. Anand V, Russell AS, Tsuyuki R, Fedorak R. Perinuclear antineutrophil cytoplasmic autoantibodies and anti-Saccharomyces cerevisiae antibodies as serological markers are not specific in the identification of Crohn's disease and ulcerative colitis. *Can J Gastroenterol*. 2008; 22:33–36. [PubMed: 18209778]
19. Kaila B, Orr K, Bernstein CN. The anti-Saccharomyces cerevisiae antibody assay in a province-wide practice: accurate in identifying cases of Crohn's disease and predicting inflammatory disease. *Can J Gastroenterol*. 2005; 19:717–21. [PubMed: 16341311]
20. Koutroubakis IE, Petinaki E, Mouzas IA, et al. Anti-Saccharomyces cerevisiae mannan antibodies and antineutrophil cytoplasmic autoantibodies in Greek patients with inflammatory bowel disease. *Am J Gastroenterol*. 2001; 96:449–54. [PubMed: 11232689]
21. Peeters M, Joossens S, Vermeire S, Vlietinck R, Bossuyt X, Rutgeerts P. Diagnostic value of anti-Saccharomyces cerevisiae and antineutrophil cytoplasmic autoantibodies in inflammatory bowel disease. *Am J Gastroenterol*. 2001; 96:730–734. [PubMed: 11280542]
22. Quinton JF, Sendid B, Reumaux D, et al. Anti-Saccharomyces cerevisiae mannan antibodies combined with antineutrophil cytoplasmic autoantibodies in inflammatory bowel disease: prevalence and diagnostic role. *Gut*. 1998; 42:788–91. [PubMed: 9691915]
23. Papp M, Altorjay I, Dotan N, et al. New serological markers for inflammatory bowel disease are associated with earlier age at onset, complicated disease behavior, risk for surgery, and NOD2/CARD15 genotype in a Hungarian IBD cohort. *Am J Gastroenterol*. 2008; 103:665–81. [PubMed: 18047543]
24. Peyrin-Biroulet L, Standaert-Vitse A, Branche J, Chamaillard M. IBD serological panels: facts and perspectives. *Inflamm Bowel Dis*. 2007; 13:1561–66. [PubMed: 17636565]
25. Targan SR, Landers CJ, Yang H, et al. Antibodies to CBir1 flagellin define a unique response that is associated independently with complicated Crohn's disease. *Gastroenterology*. 2005; 128:2020–2028. [PubMed: 15940634]
26. Mokrowiecka A, Daniel P, Slomka M, Majak P, Malecka-Panas E. Clinical utility of serological markers in inflammatory bowel disease. *Hepatogastroenterology*. 2009; 56:162–66. [PubMed: 19453050]
27. Reese GE, Constantinides VA, Simillis C, et al. Diagnostic precision of anti-Saccharomyces cerevisiae antibodies and perinuclear antineutrophil cytoplasmic antibodies in inflammatory bowel disease. *Am J Gastroenterol*. 2006; 101:2410–2422. [PubMed: 16952282]
28. Joossens S, Colombel JF, Landers C, et al. Anti-outer membrane of porin C and anti-I2 antibodies in indeterminate colitis. *Gut*. 2006; 55:1667–69. [PubMed: 16687433]
29. Moum B, Ekbohm A, Vatn MH, et al. Inflammatory bowel disease: re-evaluation of the diagnosis in a prospective population based study in south eastern Norway. *Gut*. 1997; 40:328–32. [PubMed: 9135520]
30. McGee S. Simplifying likelihood ratios. *J Gen Intern Med*. 2002; 17:646–49. [PubMed: 12213147]
31. Farmer M, Petras RE, Hunt LE, Janosky JE, Galandiuk S. The importance of diagnostic accuracy in colonic inflammatory bowel disease. *Am J Gastroenterol*. 2000; 95:3184–88. [PubMed: 11095339]

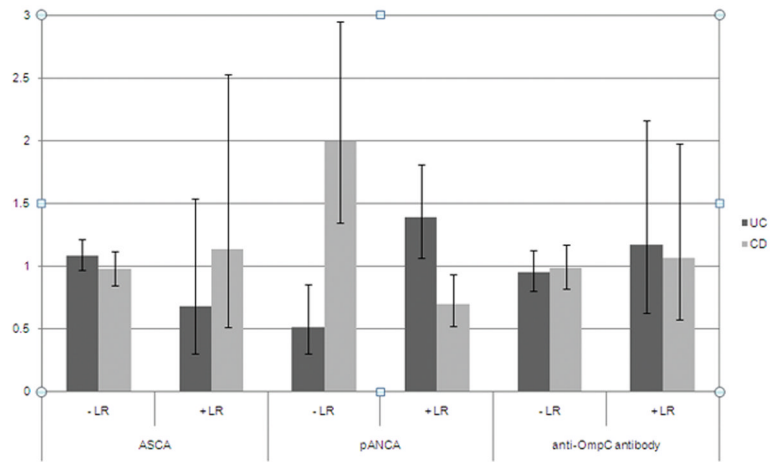


Figure 1. Negative (–) and positive (+) likelihood ratio (LR) for UC or CD diagnosis at 12 months following serology testing in patients with IC.

Table 1

Baseline characteristics of individuals with IC at time of IBD serology testing (in %, unless otherwise indicated).

Number of subjects (N)	117
Female	53
Age at testing (mean \pm sd, in years)	48 \pm 14
Symptoms	
Diarrhea	89
Abdominal pain	86
Rectal bleeding	83
Prior resection	15
Fistula	10
Elevated CRP/ESR	62
Abnormal colonoscopy	100
Chronic inflammation or crypt abscess on biopsy or pathology	100
Granuloma on biopsy or pathology	9
Abnormal SBFT	15
Abnormality in small bowel on	26
CT/MRI	

Table 2

Mean (sd) antibody levels in EU/ml at time of baseline serology testing.

	IC
ASCA IgA	9.3 (20)
ASCA IgG	13.4 (25)
pANCA IgG	39.7 (52)
pANCA IFA (% positive)	50
Anti-OmpC IgA	13.1 (13)
Anti-CBir1 IgG	28.6 (45)

Table 3

Prevalence of positive serology according to diagnosis at 12 months (in %)

	IC	UC	CD	IC vs. UC p-value *	IC vs. CD p-value *
ASCA (+)	30	14	18	0.20	0.40
pANCA (+)	70	78	53	0.60	0.33
Anti-OmpC (+)	10	28	27	0.24	0.26

* Pearson's chi-square test.

Table 4

Sensitivity and specificity for a subsequent diagnosis of UC or CD at 12 months in patients initially diagnosed with IC, based on published antibody cutoff levels.

	UC		CD	
	Sensitivity	Specificity	Sensitivity	Specificity
ASCA (+)	14	80	18	84
pANCA (+)	78	44	53	24
Anti-OmpC (+)	28	76	27	75